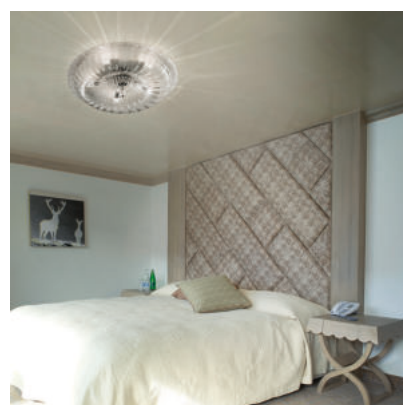


NOVECENTO

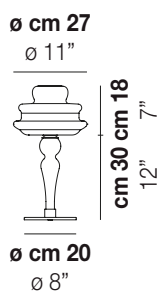
Design Romani Saccani Architetti Associati

NOVECENTO LT

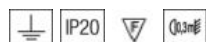


History under a new light. The whole Novecento collection was born from the desire to reinterpret the traditional Murano chandelier. To find the perfect synthesis, the designers Romani and Saccani started from the profile: they designed crystal shells produced by the 360° rotation of the historic silhouette. The choice of the crystal or white Rigadin glass finish was the master's touch: its radial stripes evoke the arms of the historic candlestick while maintaining a contemporary flavour. It is available in the following versions: suspension, ceiling lamp, table lamp and floor lamp.

NOVECENTO LT



TECHNICAL DATA:



CERTIFICATIONS:



LIGHT SOURCES

1x60W 220-240 V E14
50/60 Hz

VOLUME Mc 0,1
 GROSS WEIGHT Kg 10
 NET WEIGHT Kg 6

download



SHADE FINISHING



BCRI

CRRI

FRAME FINISHING



CR