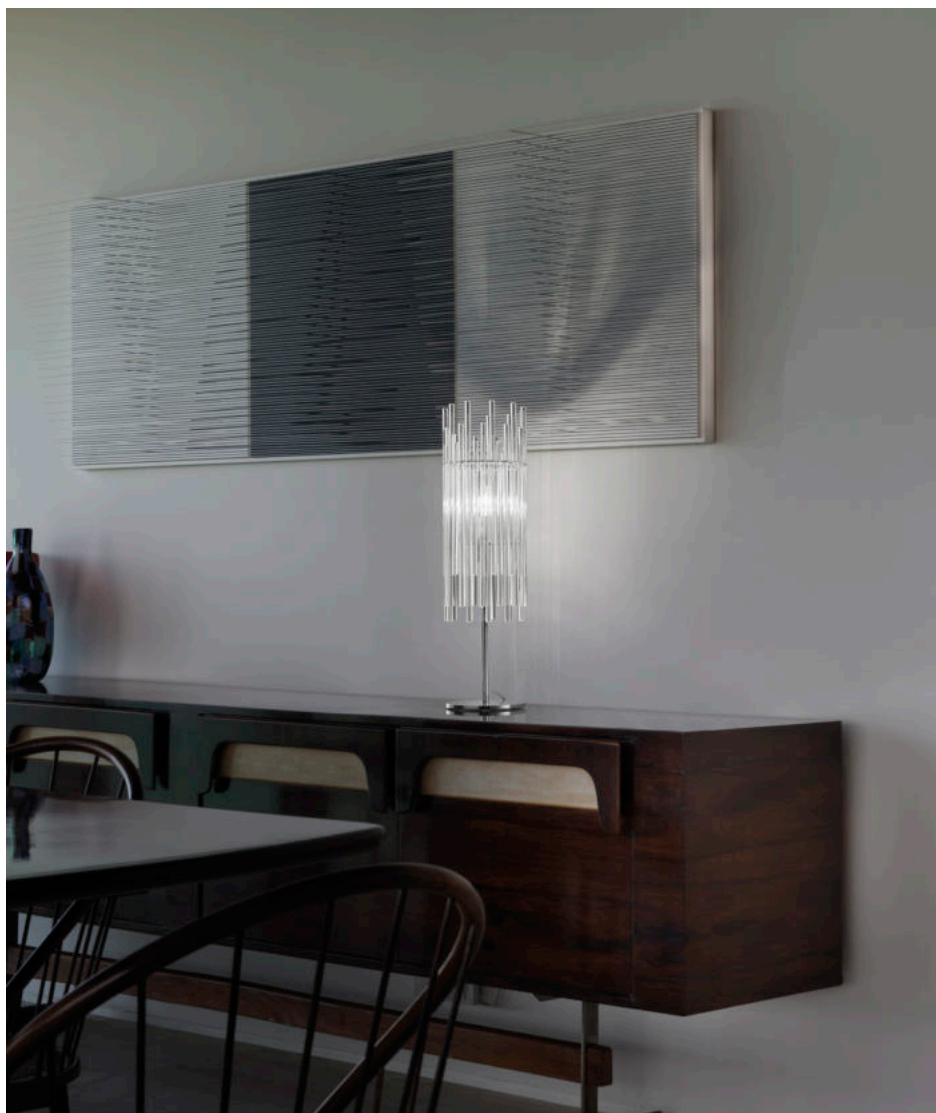


DIADEMA

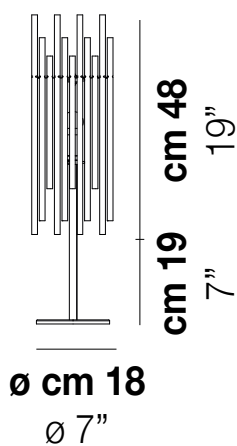
Design Romani Saccani Architetti Associati

DIADEMA LT B G

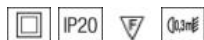


Light in motion. That is the sensation pervading the environment when one turns on a Diadema. The work of Romani Saccani Architetti Associati, the fathers of this project, first concentrates on the single element of the glass rod and then develops on a composite system: by combining rods of different sizes, the light is reflected and conveys the desired dynamism. Several variants and possibilities for customization are available. Available in the following versions: suspension, applique, table and floor lamp. Crystal shade. Metal parts finishing in satin bronze and chrome.

DIADEMA LT B G



TECHNICAL DATA:



CERTIFICATIONS:



LIGHT SOURCES

1x60 W 220-240 V G9
50/60 Hz

VOLUME Mc 0
GROSS WEIGHT Kg 10
NET WEIGHT Kg 7

download

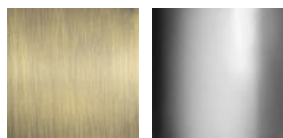


SHADE FINISHING



CR

FRAME FINISHING

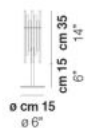


BS

CR

OTHER VERSION AVAILABLE

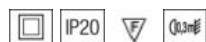
Click on the version to go to the web version of the product



DIADE LT A P

DIADEMA LT A P

TECHNICAL DATA:



CERTIFICATIONS:

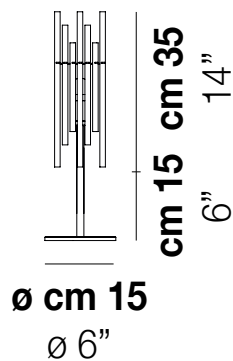


LIGHT SOURCES

1x60 W 220-240 V G9
50/60 Hz

VOLUME Mc 0
GROSS WEIGHT Kg 0
NET WEIGHT Kg 3

[download](#)

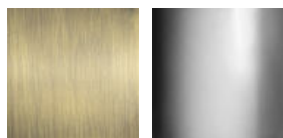


SHADE FINISHING



CR

FRAME FINISHING

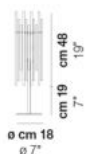


BS

CR

OTHER VERSION AVAILABLE

Click on the version to go to the web version of the product



DIADE LT B G