

I.cono

Design by Lievore Altherr Molina.

Reference

0700.

Application

Table Lamps

Installation type

Surface Canopy

Description

Table lamp ideal for reading. Designed by Lievore, Altherr, Molina. The mechanisms for rotating the head and the base are concealed, thanks to the high technical quality of all the processes involved in the creation of this piece. Switch in the base for convenience.

Diffuser

Polycarbonate diffuser

Materials

Base: Zamak

Vertical tube: Steel

Shade: Polycarbonate

Finish

 **0700-10** White (NCS S 0300-N)

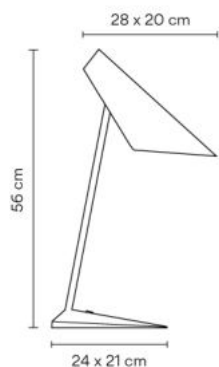
 **0700-21** Grey D1 (NCS S 7000-N)

 **0700-25** Beige D1 (NCS S 4005-Y50R)

 **0700-37** Terra Red (NCS S 4040-Y70R)

 **0700-42** Blue M1 (NCS S 5010-B10G)

Sketch



Electrical characteristics

1 x LEDSTAR CLASS.P40 E14 230V 6W

Total 6.0 W

OR

1 x COMPACT FLUORESCENT E14 230V 15W (MEGAMAN LILIPUT PLUS o similar)

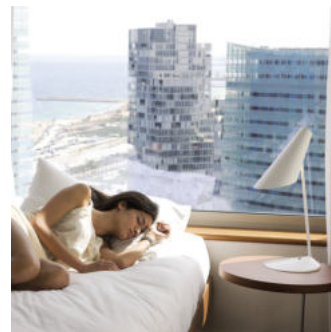
Total 15.0 W

OR

VIBIA LIGHTING, S.L.U. C/ Progrés 4-6, 08850 - Gavà (Barcelona - Spain). Tel 934 796 970. Fax 934 796 973.
vibia@vibia.com www.vibia.com

Total 46.0 W

VIBIA



Fixture: 307 lm 51.16 lm/W

Driver included: 230V 50Hz

Electronic dimming ON/OFF

Technical characteristics

- Switch on the base

Physical characteristics

1 Box / 0.31 x 0.29 x 0.80 m. / Vol. 0.0725 m³ /

Gross weight 5.2 kg. / Net weight 3.2 kg.

Installation and assembly

Please, see the installation manual

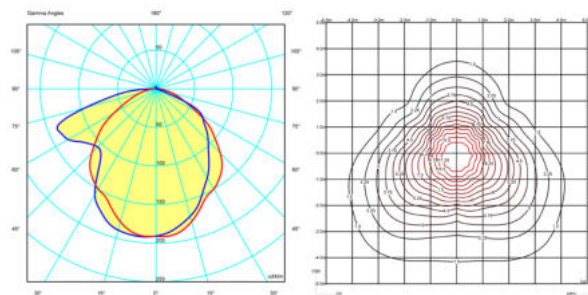
Light distribution

General lighting

Lamp for general lighting that equally distributes the light in all directions.



Photometric data



Certificates



