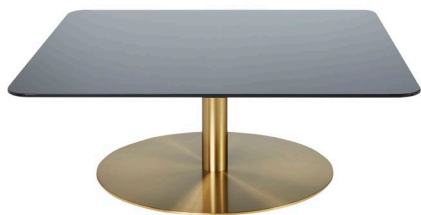


FLASH TABLE SQUARE



A series of sophisticated tables with an uncompromising metallic surface. Available in brass and now black, the mirrored glass top and iron base result in a table that is both sturdy, sleek and reflective.

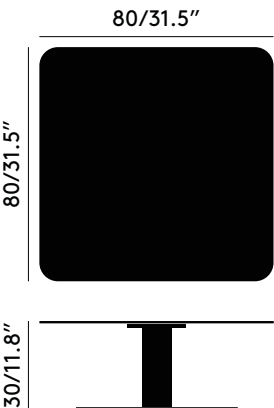
Year of Design	2009
Material	Steel and Glass
Finish	Brass - Brushed and Lacquered; Black - Gloss Powder Coat

FLASH TABLE SQUARE BRASS

Code
FLT06BR

FLASH TABLE SQUARE BLACK

Code
FLT06BL



FLASH TABLE SQUARE

Process

Black - Powder coated steel base with a gloss finish. Machine cut, mirrored & tempered glass top with aluminium fixing plate.

Brass - Brass plated steel base with a clear, matt lacquer. Machine cut, mirrored & tempered glass top with aluminium fixing plate.

Cleaning Instructions

Clean with a soft damp cloth no abrasive agents. Window cleaning agents can be used on the mirror surface. Assemble on soft surface.

Country of origin

China

Packaging

Height	0.15 m/5.91 in
Width	0.9 m/35.43 in
Length	0.9 m/35.43 in
Weight	35.5 kg/78.26 lb

Product Weight

30.9 kg/68.12 lb

Requires Assembly

Yes