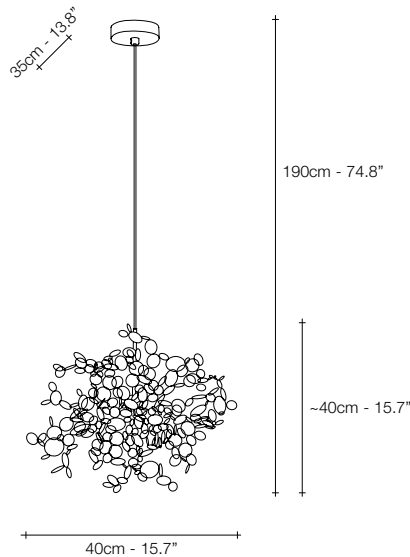
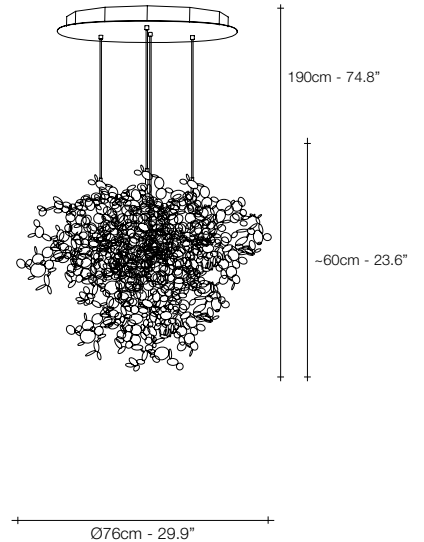


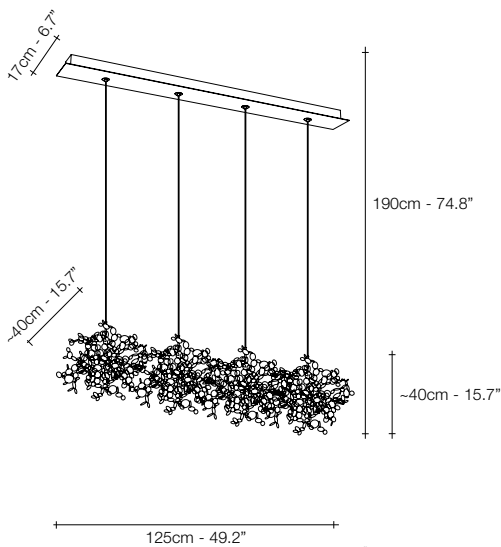
N90S KK
WHITE
DISC



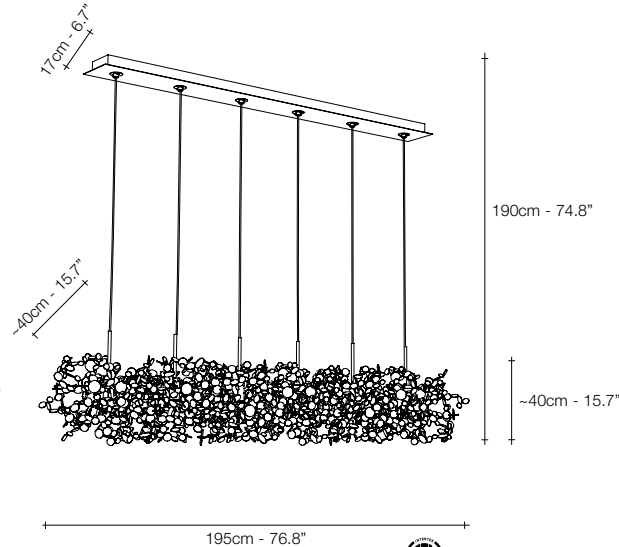
N90S



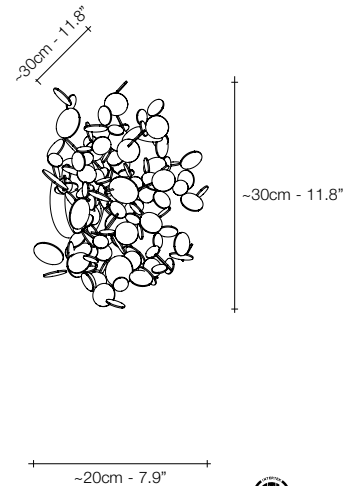
N91S



N92S



N89S



N97A



STAINLESS
STEEL



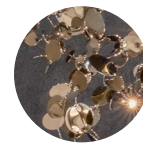
GOLD
PLATED





ROSE GOLD
PLATED



BLACK
NICKEL
(on request)



CHAMPAGNE
(on request)

	RECOMMENDED BULB	N90S KK	N90S	N91S	N92S	N89S	N97A	N99L	N98B	INTEGRATED LED	N93S	N94S	N95S	
230V	G4 HALOGEN	3x20W	3x20W	12x20W	12x20W	18x20W	3x20W	3x20W	-	230V	 LED	12x2,1W	18x2,1W	6x2,1W
	G4 LED	3x2W	3x2W	12x2W	12x2W	18x2W	3x2W	3x2W	3x2W			3285lm	4930lm	1640lm
	Dimmer	IGBT 0/1-10V 100K Ω PUSH/DALI	IGBT TRIAC DALI	IGBT 0/1-10V 10V PWM 100K Ω PUSH/DALI	IGBT 0/1-10V 10V PWM 100K Ω PUSH/DALI	IGBT 0/1-10V 10V PWM 100K Ω PUSH/DALI	IGBT TRIAC DALI	IGBT TRIAC DALI	no	Dimmer	1-10V PUSH/DALI	PUSH/DALI	0/1-10V PUSH/DALI	
120V	G4 XENON	3x20W	3x20W	12x20W	12x20W	18x20W	3x20W	3x20W	-	120V	 LED	12x2,1W	18x2,1W	6x2,1W
	G4 LED	3x2W	3x2W	12x2W	12x2W	18x2W	3x2W	3x2W	-			3290lm	4930lm	1640lm
	Dimmer	IGBT TRIAC	IGBT TRIAC	IGBT TRIAC	IGBT TRIAC	IGBT TRIAC	IGBT TRIAC	IGBT TRIAC	-	Dimmer	0/1-10V PUSH/DALI	0/1-10V PUSH	0/1-10V PUSH	

Argent N93S, N94S, N95S can be manufactured to work with integrated LED 3000K or 2700K. Different dimming options on request.

