

PORTAVALIGIE

Design Essetipi

PORTAVALIGIE | LUGGAGE RACK

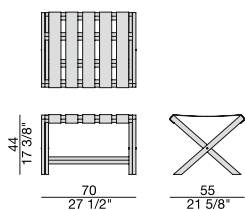
Portavaligie richiudibile in massello di frassino e cinghie in cuoietto.

Foldable luggage rack in solid ash and belts in cuoietto leather.

Gepäckträger aus massivem Esche und Leder zu öffnen.

Porte-bagages pliable en frêne massif et trame en cuoietto.

Maletero plegable en fresno macizo con cinchas de cuoietto.

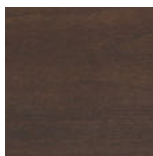


PORTAVALIGIE | LUGGAGE RACK

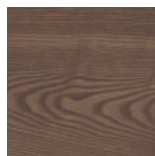
Essenze | Wood



FRASSINO NATURALE
Natural Ash



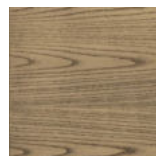
FRASSINO
Ash
tinto/stained moka



FRASSINO
Ash
tinto/stained
canaletta walnut



FRASSINO
Ash
tinto/stained wengé

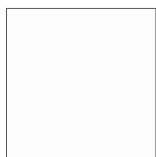


FRASSINO
Ash
tinto/stained canapa



FRASSINO
Ash
tinto/stained caffè

Laccato opaco poro aperto | Matt Lacquered open pore



BIANCO
White
(RAL 9016)



AVORIO
Ivory
(RAL 1013)



ARGILLA
Argilla
(RAL 7006)



PIOMBO
Piombo
(NCS S5005G20Y)



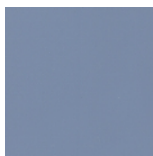
NERO
Black
(RAL 9005)



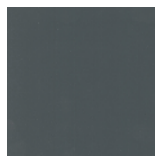
GRANATA
Granata
(NCS S4050Y90R)



PISTACCHIO
Pistacchio
(PANTONE 5825)



AVIO
Avio
(PANTONE 5415)



IRON
Iron
(RAL 7011)

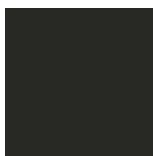


CIOCCOLATO
Chocolate
(RAL 8019)

Cuoietto | Cuoietto Leather



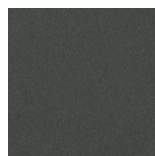
BIANCO
White



NERO
Black



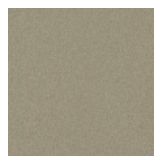
FOCA
Foca



GRIGIO SCURO
Dark Grey



CORDA
Corda



SABBIA
Sabbia



NATURALE
Natural



INVECCHIATO
Invecchiato



TESTA DI MORO
Testa di Moro



BULGARO
Bulgaro Red