



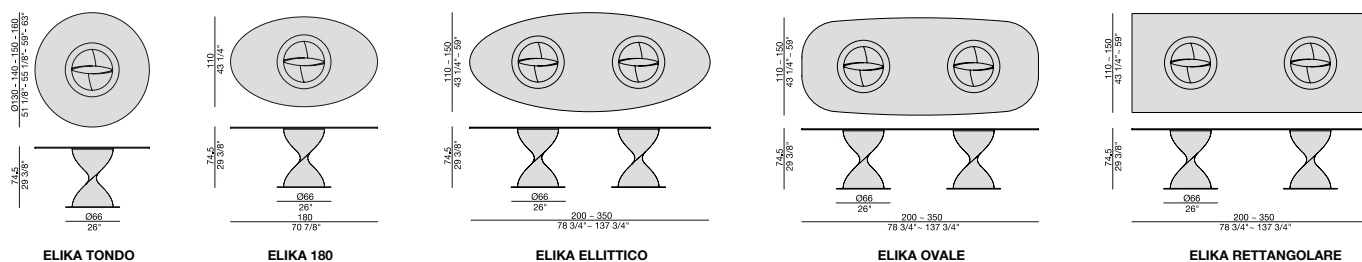
Tavolo da pranzo con base centrale in massello di noce canaletta o frassino montata su una piastra in metallo e piano in cristallo temperato (spessore mm.12).

Dining-table with base in solid canaletta walnut or ash fixed on a metal ring and tempered glass top (thickness mm. 12).

Ess-Tisch mit Gestell aus massivem Nussbaum Canaletta oder Esche auf eine Metallplatte und ESG-Glasplatte (Stärke mm. 12).

Table à manger avec piétement en noyer canaletta ou frêne massif fixé sur une plaque en métal et plateau en verre trempé (épaisseur mm. 12).

Mesa de comedor con base de nogal canaletta o fresno macizo montada sobre de un disco de metal y tapa en cristal templado (espesor mm. 12).



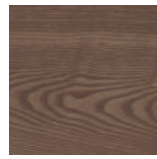
Essenze | Wood



FRASSINO NATURALE
Natural Ash



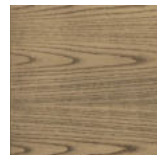
FRASSINO
Ash
tinto/stained moka



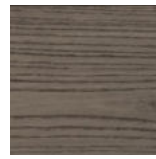
FRASSINO
Ash
tinto/stained
canaletta walnut



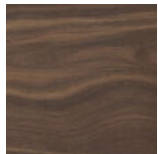
FRASSINO
Ash
tinto/stained wengé



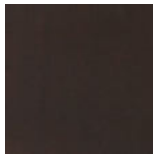
FRASSINO
Ash
tinto/stained canapa



FRASSINO
Ash
tinto/stained caffè



NOCE CANALETTA
Canaletta Walnut

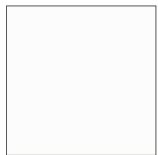


NOCE CANALETTA
Canaletta Walnut
tinto/stained moka



NOCE CANALETTA
Canaletta Walnut
tinto/stained wengé

Laccato opaco poro aperto/chiuso | Matt Lacquered open/closed pore



BIANCO
White
(RAL 9016)



AVORIO
Ivory
(RAL 1013)



ARGILLA
Argilla
(RAL 7006)



PIOMBO
Piombo
(NCS S5005G20Y)



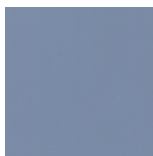
NERO
Black
(RAL 9005)



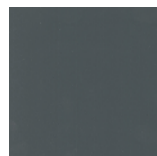
GRANATA
Granata
(NCS S4050Y90R)



PISTACCHIO
Pistacchio
(PANTONE 5825)



AVIO
Avio
(PANTONE 5415)

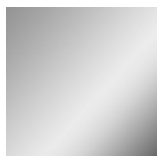


IRON
Iron
(RAL 7011)



CIOCCOLATO
Chocolate
(RAL 8019)

Metallo | Metal



CROMO SATINATO
Satin chromed

Cristallo | Glass



TRASPARENTE
Transparent

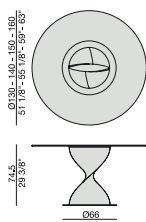
Tavolo da pranzo con base centrale in massello di noce canaletta o frassino montata su una piastra in metallo e piano in cristallo temperato (spessore mm.12).

Dining-table with base in solid canaletta walnut or ash fixed on a metal ring and tempered glass top (thickness mm. 12).

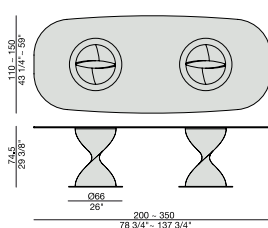
Ess-Tisch mit Gestell aus massivem Nussbaum Canaletta oder Esche auf eine Metallplatte und ESG-Glasplatte (Stärke mm. 12).

Table à manger avec piétement en noyer canaletta ou frêne massif fixé sur une plaque en métal et plateau en verre trempé (épaisseur mm. 12).

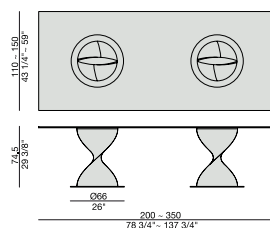
Mesa de comedor con base de nogal canaletta o fresno macizo montada sobre de un disco de metal y tapa en cristal templado (espesor mm. 12).



ELIKA TONDO



ELIKA OVALE



ELIKA RETTANGOLARE

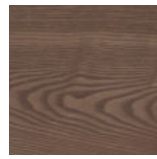
Essenze | Wood



FRASSINO NATURALE
Natural Ash



FRASSINO
Ash
tinto/stained moka



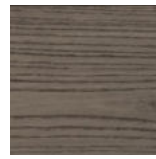
FRASSINO
Ash
tinto/stained
canaletta walnut



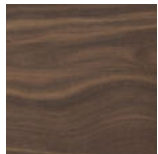
FRASSINO
Ash
tinto/stained wengé



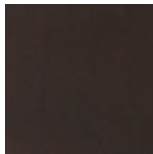
FRASSINO
Ash
tinto/stained canapa



FRASSINO
Ash
tinto/stained caffè



NOCE CANALETTA
Canaletta Walnut

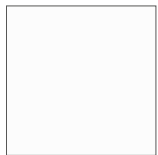


NOCE CANALETTA
Canaletta Walnut
tinto/stained moka



NOCE CANALETTA
Canaletta Walnut
tinto/stained wengé

Laccato opaco poro aperto/chiuso | Matt Lacquered open/closed pore



BIANCO
White
(RAL 9016)



AVORIO
Ivory
(RAL 1013)



ARGILLA
Argilla
(RAL 7006)



PIOMBO
Piombo
(NCS S5005G20Y)



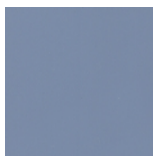
NERO
Black
(RAL 9005)



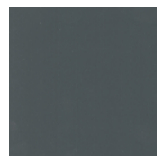
GRANATA
Granata
(NCS S4050Y90R)



PISTACCHIO
Pistacchio
(PANTONE 5825)



AVIO
Avio
(PANTONE 5415)



IRON
Iron
(RAL 7011)

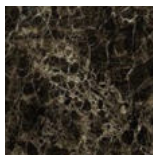


CIOCCOLATO
Chocolate
(RAL 8019)

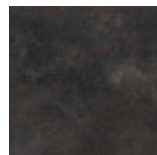
Rock | Rock



CALACATTA
Calacatta

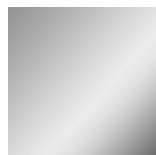


EMPERADOR
Emperador



BLACK OXIDE
Black Oxide

Metallo | Metal



CROMO SATINATO
Satin chromed

Cristallo | Glass



TRASPARENTE
Transparent

ELIKA BRILLANTE

Design G. Carollo

TAVOLO | DINING TABLE

2011

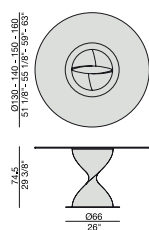
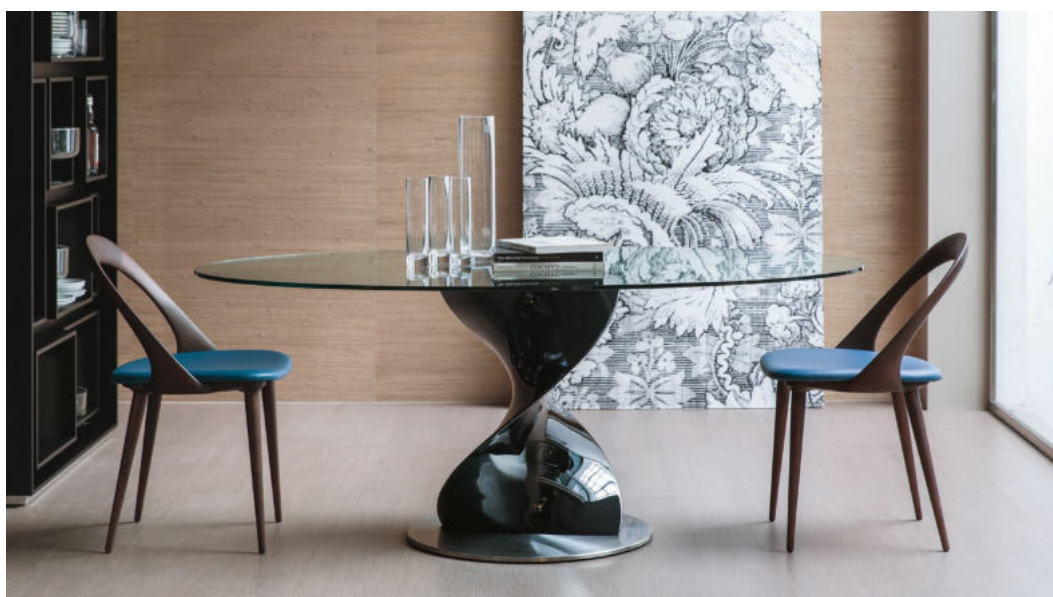
Tavolo da pranzo con base centrale in tecnopolimero strutturale montata su una piastra in metallo e piano in cristallo temperato (spessore mm.12).

Dining-table with base in structural technopolymer fixed on a metal ring and tempered glass top (thickness mm. 12).

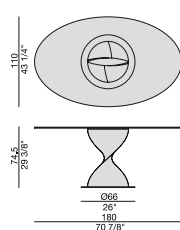
Ess-Tisch mit Gestell aus Strukturel Technopolymer auf eine Metallplatte und ESG-Glasplatte (Stärke mm. 12).

Table à manger avec piétement en technopolymère structural fixé sur une plaque en métal et plateau en verre trempé (épaisseur mm. 12).

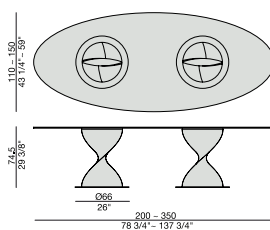
Mesa de comedor con base de tecnopolimero montada sobre de un disco de metal y tapa en cristal templado (espesor mm. 12).



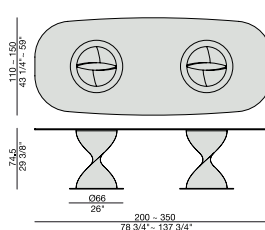
ELIKA TONDO



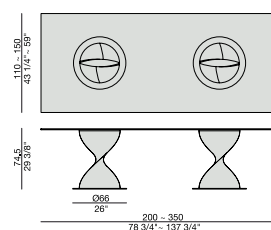
ELIKA 180



ELIKA ELLITTICO



ELIKA OVALE



ELIKA RETTANGOLARE

Tecnopolimero | *Technopolymer*



BIANCO BRILLANTE
Shiny white



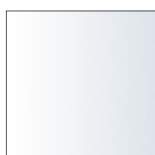
NERO BRILLANTE
Shiny black

Metallo | *Metal*



CROMO SATINATO
Satin chromed

Cristallo | *Glass*



TRASPARENTE
Transparent

ELIKA BRILLANTE ROCK

Design G. Carollo

TAVOLO | DINING TABLE

2011

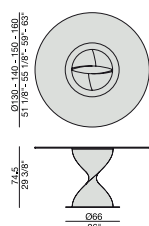
Tavolo da pranzo con base centrale in tecnopolimero strutturale montata su una piastra in metallo e piano in Rock (spessore mm. 6) con sottopiano di supporto in cristallo temperato (spessore mm. 10).

Dining-table with base in structural technopolymer fixed on a metal ring and top in Rock (thickness mm. 6) with under-top in tempered glass (thickness mm. 10).

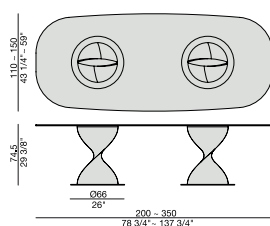
Ess-Tisch mit Gestell aus Strukturel Technopolymer auf eine Metallplatte und Platte aus Rock (Stärke mm. 6). Untere Platte aus Glas (Stärke mm. 10).

Table à manger avec piétement en technopolymère structural fixé sur une plaque en métal et plateau en Rock (épaisseur mm. 6) avec sous-plateau en verre trempé (épaisseur mm. 10).

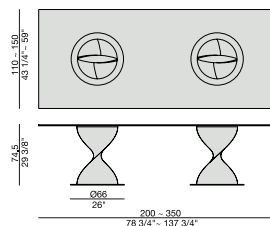
Mesa de comedor con base de tecnopolímero montada sobre de un disco de metal y tapa en Rock (espesor mm. 6). Soporte para tapa en cristal templado (espesor mm. 10).



ELIKA TONDO

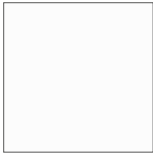


ELIKA OVALE



ELIKA Rettangolare

Tecnopolimero | *Technopolymer*



BIANCO BRILLANTE
Shiny white



NERO BRILLANTE
Shiny black

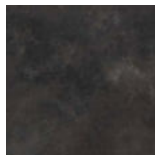
Rock | *Rock*



CALACATTA
Calacatta

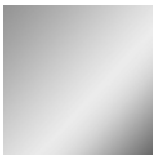


EMPERADOR
Emperador



BLACK OXIDE
Black Oxide

Metallo | *Metal*



CROMO SATINATO
Satin chromed

Cristallo | *Glass*



TRASPARENTE
Transparent