

mdf italia



© COPYRIGHT 2022 MDF ITALIA SRL SOCIETA' UNIPERSONALE

2016

LINK 1

Designed by Bruno Fattorini

Link 1 Shelf is associated with the evolution of current design concept, that goes beyond the traditional vision of pure aesthetic dimension, to be a polyhedral object in which function, simplicity, innovation and project culture are merged.

Link1 is a simple and pure sign capable of conversing with different shapes and of aggregating fairly with different products. A "universal" line, useful for every need with a considerable capability of adapting to space.

The shelf is also available in electrified version, with cable management door and back interspace to make cables pass and be hidden.

STRUCTURE

Top made from MD wood fiberboards, coated with: matt white acrylic resin, natural oak wood, carbonized wood, fine wood, Italian walnut, reconstituted stone, reconstructed stone white calce, reconstructed stone black slate, reconstructed marble in black Ebony, reconstructed marble white Carrara, diamond (glossy red) and brass sheet. The white acrylic resin finish matches with the Tense collection. The wood, brass, red diamond, reconstructed stone and reconstructed marble finishes match with the Tense Material collection.

Shelf with bearing bracket (maximum capacity of 20 kg/ml) made from steel powder-coated in aluminium grey.

Adjustable inclination with special soft perimeter profile, that enables an easy and perfect installation to make up for the various irregularities of wall structures.

SIZE AND TYPOLOGIES

Shelf available in the following lengths: L180, 210, 240, 270 and L300 cm, D48,5 cm H6 cm.

Also available in electrified version, with cable management door and back interspace to make cables pass and be hidden. Door available in matt white for the acrylic resin, reconstructed stone white Calce and reconstructed marble Carrara white version; in matt black for the other versions.

LINK 1 - SHELF



dimensions

L180 D48.5 H6 (top thickness)

L210 D48.5 H6

L240 D48.5 H6

L270 D48.5 H6

L300 D48.5 H6

**also available in electrified version,
with cable management door and back interspace
to make cables pass and be hidden.**

Finishing

The number in the dot corresponds to the number of colour/material finish.

Here below, in the section FINISH OPTIONS, please note all the colours of the materials used for this product.

SHELF

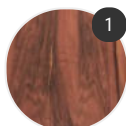
Structure



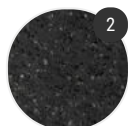
Wood



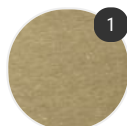
Carbone



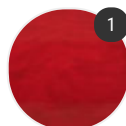
Fine Wood



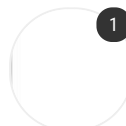
Marble



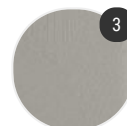
Brass



Diamond



Solid surface



Reconstructed
stone

Finish options

STRUCTURE

Wood



Wood X085

Carbone



Carbonised
wood X094

Fine Wood



Fine wood,
Italian walnut
X119

Marble



Reconstructed
marble white
Carrara X120



Reconstructed
marble black
ebony X111

Brass



Brass X086

Diamond



Diamond,
glossy red
X121

Solid surface



Solid surface
white 3mm
X035

Reconstructed stone



Reconstructed
stone white
Calce X131



Reconstructed
stone black
slate X132



Reconstructed
stone X084