

mdf italia



© COPYRIGHT 2022 MDF ITALIA SRL SOCIETA' UNIPERSONALE

2012-2015

INMOTION

Designed by Neuland Industriedesign

Inmotion: a name that speaks for itself.

A storage system expressing a 3D, aesthetic and functional innovation. Its hallmark? Top flexibility since it consists of column-shaped elements, as well as basic and hanging elements to be overlapped as you like. Rotating modules, drawers and folding drawers can be composed either by juxtaposition or they can be fixed on the wall. Finishes and colours can be customised as well. Colours can be changed also after purchase. Neuland Industriedesign's Inmotion expresses a great creation freedom arousing emotions, for dynamic, lively and original spaces.

INMOTION IN SHORT

- Top compositional flexibility
- Customisation of finishes and colours
- A dynamic furnishing.

TYOLOGIES

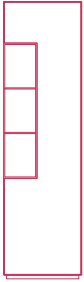
All units are made of medium-density wood fibreboard (1.6cm thick), divided into two main categories: vertical elements and horizontal elements.

FINISHES

The elements are in matt lacquered white and open pore matt black ash available.

Open compartments and rotary elements are available in the following finishes: matt lacquered white, avio blue, dark red, mustard yellow and anthracite grey; natural wood, natural grey wood and natural black wood.

GROUND-RESTING COLUMNS



with door and rotary unit
L53 D48 H188 cm

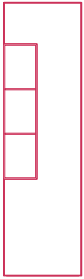


with door
L45 D48 H188



with door and rotary unit
L34 D48 H188 cm

HANGING COLUMNS



with door and rotary unit
L53 D33 H185.5 cm



with door
L45 D33 H185.5



with door and rotary unit
L34 D33 H185.5

HANGING COLUMNS H111



with door
L34 D33 H111 cm



with door and open compartment
L34 D33 H111 cm

HANGING UNITS D48 H32



flap opening with single door (r)
L53 D48 H32 cm



flap opening with single door (r)
L85 D48 H32 cm



flap opening with single door (r)
L144 D48 H32 cm



open compartment and drawer (g/c)
L53 D48 H32 cm



open compartment and drawer (g/c)
L85 D48 H32 cm



open compartment and drawer (g/c)
L144 D48 H32 cm



open compartment and flap door (g/r)
L53 D48 H32 cm



open compartment and flap door (g/r)
L85 D48 H32 cm



open compartment and flap door (g/r)
L144 D48 H32 cm



two-front drawers (c/c)
L53 D48 H32 cm



two-front drawers (c/c)
L85 D48 H32 cm



two-front drawers (c/c)
L144 D48 H32 cm

BASE UNITS



single drawer (c)
L53 D48 H34.5 cm



single drawer (c)
L85 D48 H34.5 cm



single drawer (c)
L144 D48 H34.5 cm



open compartment and drawer (g/c)
L53 D48 H34.5 cm



open compartment and drawer (g/c)
L85 D48 H34.5 cm



open compartment and drawer (g/c)
L144 D48 H34.5 cm



open compartment and flap door (g/r)
L53 D48 H34.5 cm



open compartment and flap door (g/r)
L85 D48 H34.5 cm



open compartment and flap door (g/r)
L144 D48 H34.5 cm

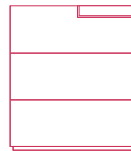
CUPBOARDS



two drawers (c/c)
L85 D48 H66 cm



two drawers (c/c)
L144 D48 H66 cm



with tray and 3 drawers (v/c)
L85 D48 H98 cm

SIDEBOARD



**with downward flap door and tray
bridge stand (v/r)**
L160 D48 H50 cm



**with downward flap door and tray
bridge stand (v/r)**
L203 D48 H50 cm



**with tray, single flap door
and finished back panel*
bridge stand (v/r)**
L160 D48 H50 cm



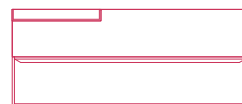
**with tray, single flap door
and finished back panel*
bridge stand (v/r)**
L203 D48 H50 cm



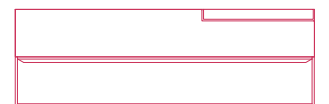
**with downward flap door and tray
frame stand (v/r)**
L160 D48 H66 cm



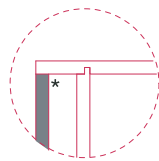
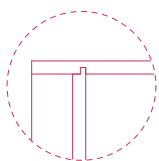
**with downward flap door and tray
frame stand (v/r)**
L203 D48 H66 cm



**with tray, single flap door
and finished back panel*
frame stand (v/r)**
L160 D48 H66 cm

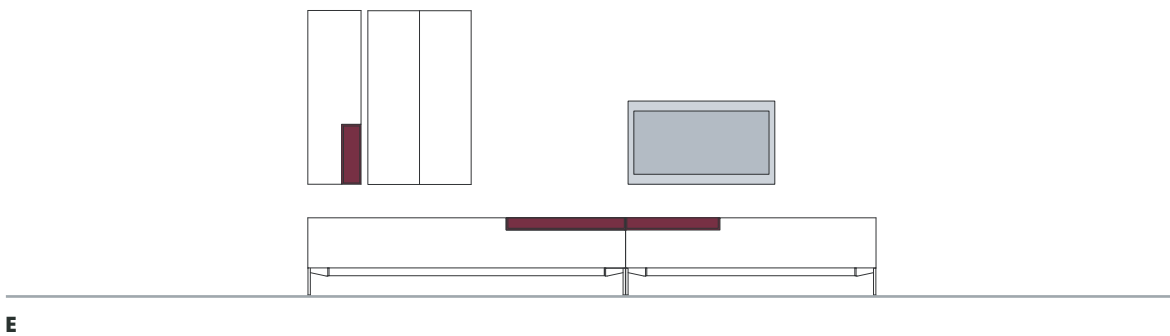
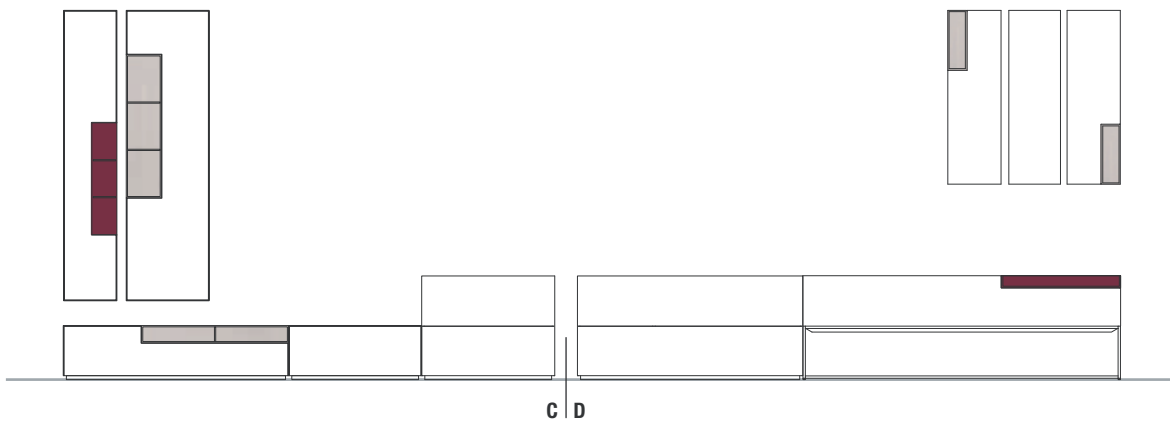
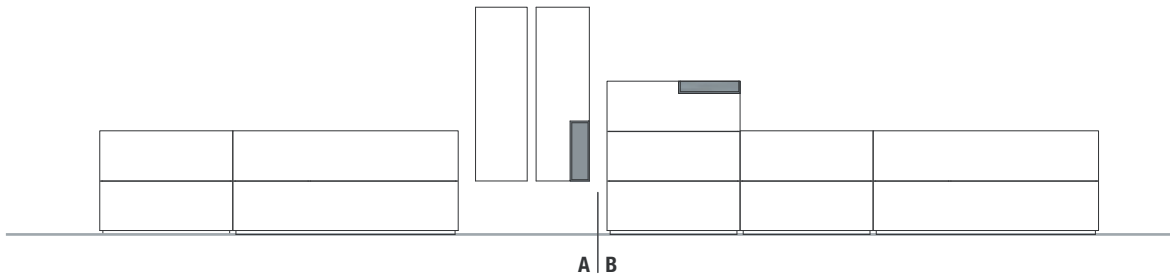


**with tray, single flap door
and finished back panel*
frame stand (v/r)**
L203 D48 H66 cm



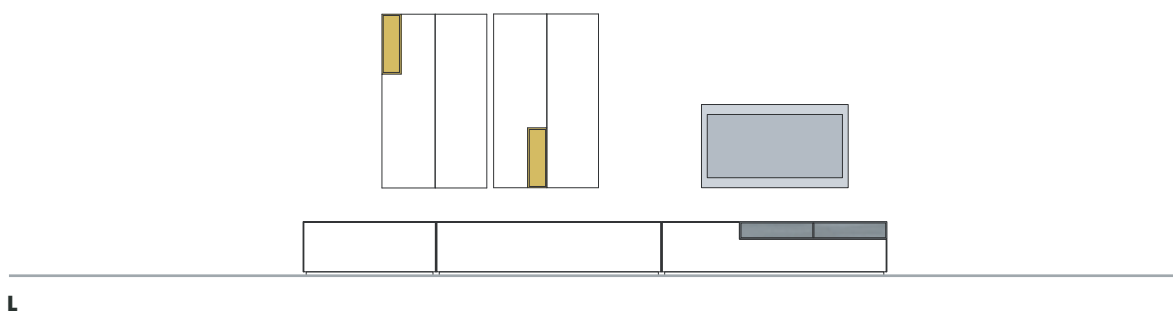
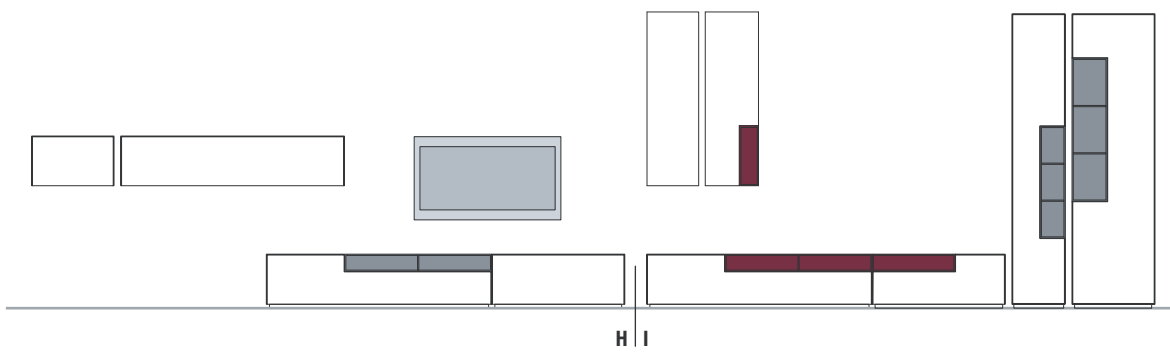
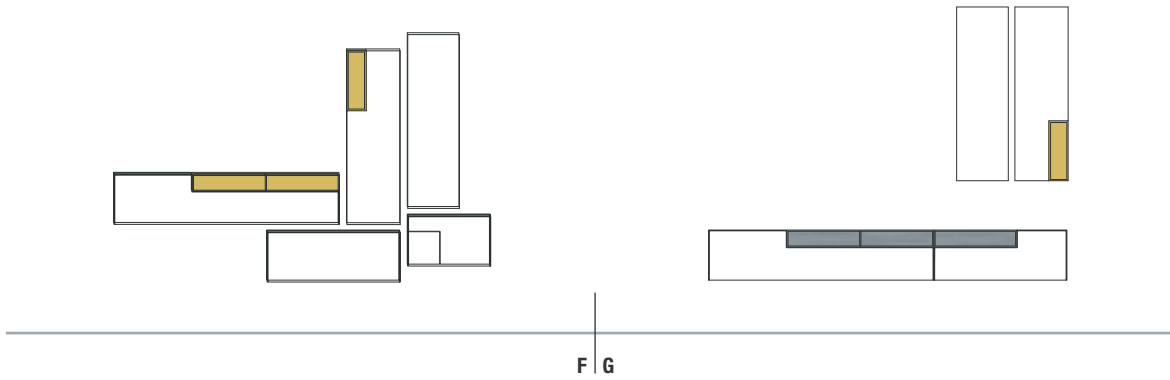
INMOTION | MODULAR SYSTEM

EXAMPLES OF COMPOSITIONS



INMOTION | MODULAR SYSTEM

EXAMPLES OF COMPOSITIONS



Finishing

The number in the dot corresponds to the number of colour/material finish.

Here below, in the section FINISH OPTIONS, please note all the colours of the materials used for this product.

MODULAR UNITS

Structure



High columns



Short columns

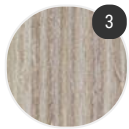


Base and hanging units

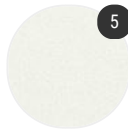


Cupboards

Open compartment



Wood



Matt lacquered

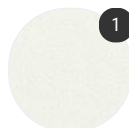
SIDEBOARDS

Base



Matt painted

Structure

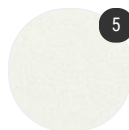


Matt lacquered

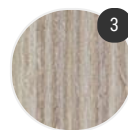


Wood

Open compartment



Matt lacquered

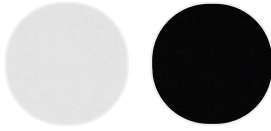


Wood

Finish options

BASE

Matt painted



Matt painted
white X053

Matt painted
graphite grey
X054

STRUCTURE

High columns



Matt
lacquered
white X042

Short columns



Matt
lacquered
white X042

Black ash
X083

Base and hanging units



Black ash
X083

Matt
lacquered
white X042

Cupboards



Black ash
X083



Matt
lacquered
white X042

Matt lacquered



Matt
lacquered
white X042

Wood



Black ash
X083

OPEN COMPARTMENT

Wood



Natural wood
X027



Natural grey
wood X028



Natural black
wood X029

Matt lacquered



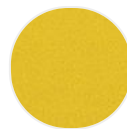
Matt
lacquered
white X042



Matt
lacquered
anthracite
grey X045



Matt
lacquered
dark red X046



Matt
lacquered
mustard
yellow X048



Matt
lacquered
avio blue
X050