

## CROSBY POLTRONA e BERGERE Design Gianfranco Frigerio

**Struttura:** in legno imbottito in poliuretano espanso indeformabile rivestito in tessuto protettivo accoppiato

**Seduta:** in poliuretano espanso.

**Piedini:** in massello noce canaletto o tinto wengè. Su richiesta (fatta salva fattibilità tecnica) rivestiti in tessuto o pelle come rivestimento.

**Rivestimento:** in tessuto o pelle, sfoderabile solo nella versione in tessuto.

**Profilo:** nello stesso tessuto e colore del rivestimento. A richiesta profilo in contrasto.

### ACCESSORI:

\* **pouf:** disponibile in finiture coordinate alla poltrona.

**Structure:** in wood padded in non-deformable polyurethane covered in doubled protective fabric.

**Seat:** in non-deformable polyurethane foam.

**Feet:** in solid wood walnut canaletto or wengé colour. On request (subject to technical feasibility approval) covered in fabric or leather as cover.

**Cover:** in fabric or leather, removable cover only in the fabric version.

**Piping:** realized with profile in the same fabric and colour. On request profile in contrast.

### ACCESSORIES:

\* **stool:** available in finishes coordinated to the armchair

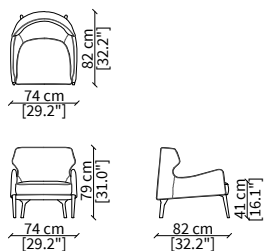


## CROSBY POLTRONA e BERGERE Design Gianfranco Frigerio

### POLTRONA - ARMCHAIR

cod. 13401

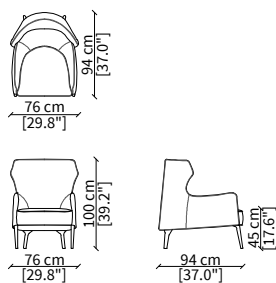
Poltrona / Armchair



### BERGERE

cod. 13402

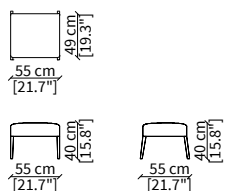
Bergere



### POUFF - STOOL

cod. 13403

Pouff



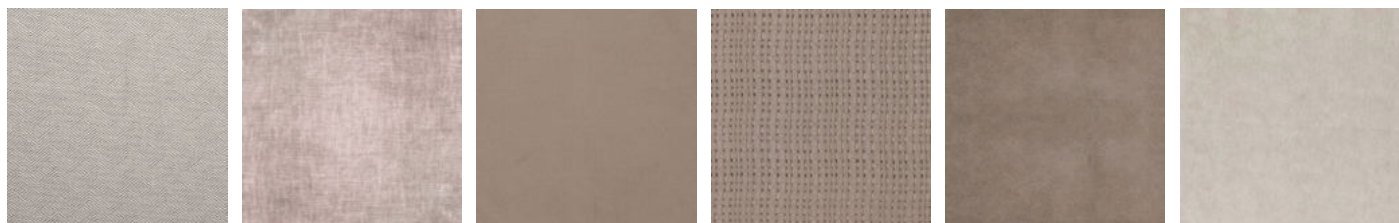
## CROSBY POLTRONA e BERGERE Design Gianfranco Frigerio

RIVESTIMENTO / TESSUTO  
COVER / FABRIC



*I colori visualizzati, per ovvie ragioni tecniche, sono indicativi e possono differire dall'originale.*

*The colours visualized, for obvious technical reasons, are indicative and may differ from the original.*



Villa Flori

VF 1650

VF 1700

VF 1750

VF 1800

VF 2450



VF 2550

## RIVESTIMENTO / PELLE COVER / LEATHER



Anilina

Bolgheri

Nubuk

Pisa

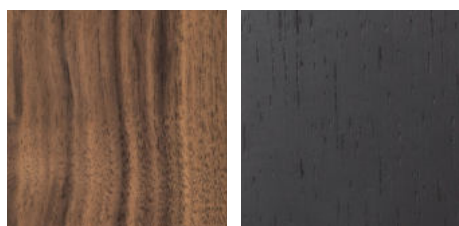
Siena

## CUCITURE SEWINGS



Profilo

## PIEDINI / LEGNO FEET / WOOD



Noce Canaletto  
Walnut Canaletto

Tinto Wengè  
Wengè Coloured