

Collection **PASSE-PARTOUT**

Simplicity is the main feature of the wardrobe Passe-Partout, which also in its name declares that it can be adapted to any space. The doors are always characterized by a large frame with 45° cutting on the edges which holds a mirror or a panel available in different finishes.



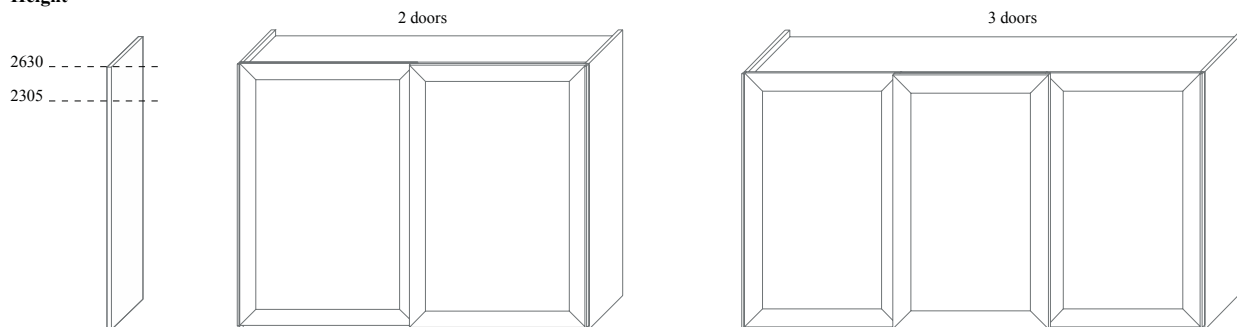
design: Pietro Arosio

Finishes:

Doors: mat lacquered in our selected colours, wengè, natural mirror, glossy glass available in our selected colours
External sides: mat lacquered in our selected colours, wengè
Internal finish: mat lacquered in our selected colours, dark walnut

Dimensions:

Height



Width

