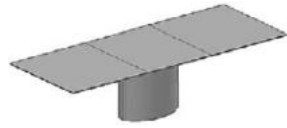


# 1224 ADLER II

DIFFERENT VERSIONS OF THE BASE



**base 2**    **oval (standard)**    oval base stainless steel matt ground finish 40 x 66 cm integrated rollers as per request

**base 2**    **oval oversize (standard)**    oval base stainless steel matt ground finish 50 x 86 cm integrated rollers as per request

**base 3**    **oval with leather (with surcharge)**    oval base stainless steel covered with leather 40 x 66 cm integrated rollers as per request

**base 3**    **oval with leather oversize (with surcharge)**    oval base stainless steel covered with leather 50 x 86 cm integrated rollers as per request



**base 5**    **stone / wood (with surcharge)**    oval base made of stone lamellas / wood veneer 41 x 67 cm integrated rollers as per request

**base 5**    **stone / wood oversize (with surcharge)**    oval base made of stone lamellas / wood veneer 51 x 87 cm integrated rollers as per request

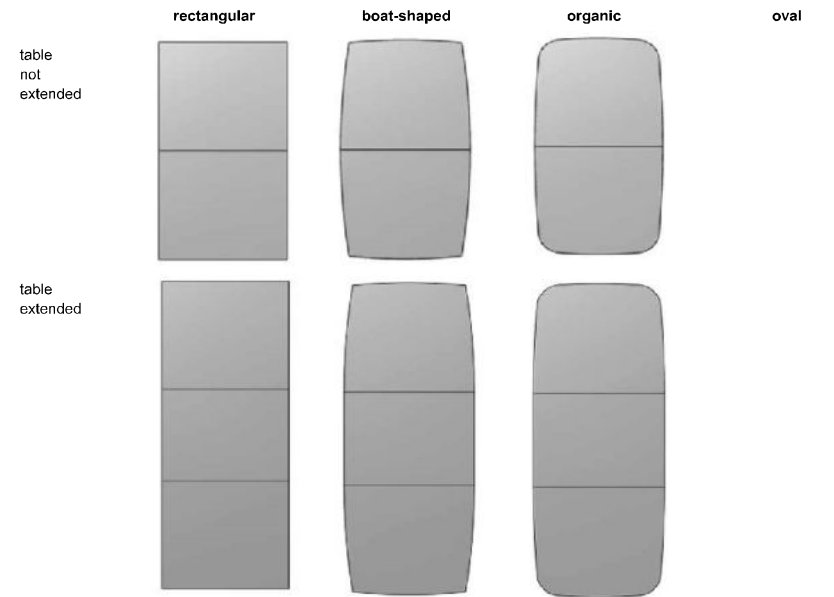


**base 6**    **flat oval (with surcharge)**    flat oval base stainless steel matt ground finish 16 x 53.5 cm base plate stainless steel matt ground finish 40 x 76 cm

**base 6**    **flat oval oversize (with surcharge)**    flat oval base stainless steel matt ground finish 22 x 76.5 cm base plate stainless steel matt ground finish 52 x 98 cm

# ADLER II 1224

DIFFERENT SHAPES OF THE TABLE TOPS



boat-shaped  
Width of the table at the headside for table size:  
95 x 150 / 210 cm = approx. 86.2 cm  
105 x 170 / 250 cm = approx. 93.7 cm  
105 x 190 / 270 cm = approx. 90.7 cm  
120 x 270 / 370 cm = approx. 105.5 cm



boat-shaped  
Width of the table at the headside for table size:  
95 x 160 cm = approx. 84.9 cm  
105 x 180 cm = approx. 92.2 cm  
105 x 200 cm = approx. 89.0 cm  
105 x 220 cm = approx. 90.5 cm  
105 x 240 cm = approx. 91.2 cm  
105 x 260 cm = approx. 91.5 cm  
120 x 260 cm = approx. 106.6 cm  
120 x 280 cm = approx. 104.4 cm

oval  
only possible  
to a limited extend





# 1224 ADLER II

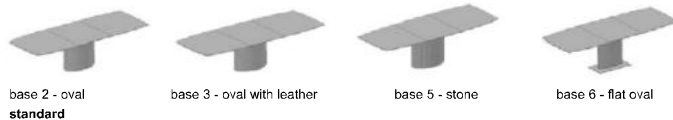
NATURAL STONE

DESIGN PETER DRAENERT 1995

# ADLER II 1224

NATURAL STONE

Model type	Pedestal	Size W - L - H approx. in cm
 extendable 1224 dining table boat-shaped, rectangular, organic <b>extendable</b> with integrated lifting center-leaf stone 60 cm	base 2 oval standard	95 x 150 x 74.5 extended 95 x 210 x 74.5
	base 2 oval standard	105 x 170 x 74.5 extended 105 x 250 x 74.5  105 x 190 x 74.5 extended 105 x 270 x 74.5
1224 dining table MAGNUM boat-shaped, rectangular, organic <b>extendable</b> with integrated lifting center-leaf stone 100 cm	base 2 oval with oversize standard	120 x 270 x 75 extended 120 x 370 x 75
 not extendable 1224 dining table boat-shaped, rectangular, organic, oval <b>not extendable</b>	base 2 oval standard	95 x 160 x 73 105 x 180 x 73 105 x 200 x 73 105 x 220 x 73 105 x 240 x 73 105 x 260 x 73
	base 2 oval with oversize standard	120 x 260 x 73.5 120 x 280 x 73.5



**The promotion prices\* include:**

table top: extendable: only boat-shaped  
 not extendable: all top shapes  
 stones: Silver Paradiso polished / Carrara leathered  
 For this promotion we may NOT provide photos or reservations of slabs.



**Quick ship / fast delivery program:**

**Please indicate when ordering!**  
 Delivery of the models in promotion will be effected within 4 weeks ex works.

Note:

Base with rollers not suitable for high pile carpets.

Top	Top	Top	Top	Top	Top	Top	Top	Top
stone 2 cm edge 5 Silver Paradiso polished Carrara leathered	stone 2 cm edge 5 PG 2	stone 2 cm edge 5 PG 3	stone 2 cm edge 5 PG 4	stone 2 cm edge 5 PG 4a	stone 2 cm edge 5 PG 4b	stone 2 cm edge 5 PG 5	stone 2 cm edge 5 PG 6	stone 2 cm edge 5 PG 6
* PROMOTION / (Q)								
*								
*								
*								
*								

**Price supplements for special orders:**

base 2 / 6	coated black, dark bronze, gold-colored or nickel-colored	
base 2 / 6	lacquered to RAL / NCS	
base 2	lacquered black chromium-colored	
base 2 / 3 / 5	with rollers	
base 3	with leather cover	leather I
base 3	with leather cover	leather II
base 5	oval stone base	PG 2 - 4b
base 5	oval stone base	PG 5 + 6
base 6	flat oval base	
extension frame	lacquered to RAL / NCS	



# 1224 ADLER II

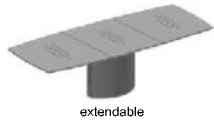
SOLID WOOD

DESIGN PETER DRAENERT 1995

# ADLER II 1224

SOLID WOOD

Model type	Pedestal	Size W - L - H approx. in cm
------------	----------	------------------------------------



extendable

1224 dining table boat-shaped, rectangular, organic <b>extendable</b> with integrated lifting center-leaf solid wood 60 cm table tops glued transverse	base 2 oval	95 x 150 x 74.5 extended
	standard	95 x 210 x 74.5

1224 dining table <b>extendable</b> boat-shaped, rectangular, organic with integrated lifting center-leaf solid wood 80 cm table tops glued transverse	base 2 oval	105 x 170 x 74.5 extended
	standard	105 x 250 x 74.5  105 x 190 x 74.5 extended 105 x 270 x 74.5

1224 dining table MAGNUM <b>extendable</b> boat-shaped, rectangular, organic with integrated lifting center-leaf solid wood 100 cm table tops glued transverse	base 2 oval with oversize	120 x 270 x 75 extended
	standard	120 x 370 x 75



not extendable

1224 dining table boat-shaped, rectangular, organic, oval <b>not extendable</b> table top glued lengthwise	base 2 oval	95 x 160 x 73 105 x 180 x 73
	standard	105 x 200 x 73 105 x 220 x 73 105 x 240 x 73

1224 dining table MAGNUM boat-shaped, rectangular, organic, oval <b>not extendable</b> table top glued lengthwise	base 2 oval with oversize standard	120 x 260 x 73.5
--	--	------------------



base 2 - oval  
standard



base 3 - oval with leather



base 5 - wood



base 6 - flat oval

Please indicate in your order:

Surface waxed (standard) or lacquered clear (same price).

Note:

Base with rollers not suitable for high pile carpets.

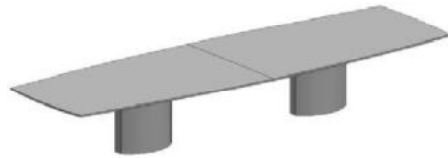
Top	Top
solid wood 2.5 cm edge 5 oak wild oak DRAENERT colors	solid wood 2.5 cm edge 5 American walnut

### Price supplements for special orders:

base 2 / 6	coated black, dark bronze, gold-colored or nickel-colored	
base 2 / 6	lacquered to RAL / NCS	
base 2	lacquered black chromium-colored	
base 2 / 3 / 5	with rollers	
base 3	with leather cover	leather I
base 3	with leather cover	leather II
base 5	oval base veneered as top	
base 6	flat oval base	
extension frame	lacquered to RAL / NCS	



Informations on the ADLER Conference System:



**Dimensions** The ADLER Conference System offers maximum flexibility. Almost every size is possible. In terms of length, the sequence is unlimited. Please request your desired dimensions. Because of the huge variety, no prices are listed here. On the opposite page, you will find an overview of the variants in dimensions and bases.

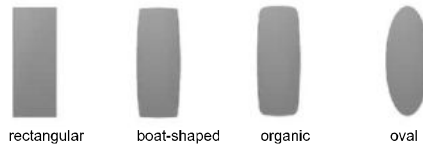
**Table top** We offer 150 different types of natural stones (page 4-5), diverse veneers, Fenix or high-pressured laminate (HPL). Depending on the table size, also massive wood is available.



**Table top edges**



**Table top shapes**



Base	Base 2	Standard	oval base steel matt ground 40 x 66 cm lacquered to RAL / NCS
	Base 2	Magnum	oval base steel matt ground 50 x 86 cm lacquered to RAL / NCS
	Base 3	Standard	oval base covered with leather 40 x 66 cm
	Base 3	Magnum	oval base covered with leather 50 x 86 cm
	Base 5	Standard	oval base made of stone lamellas / wood veneer 41 x 67 cm
	Base 5	Magnum	oval base made of stone lamellas / wood veneer 51 x 87 cm

As an optional extra, we offer the base with integrated rollers. Each table segment is movable then.

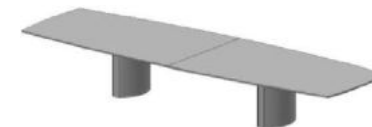
**Options** According to requirements, the single elements are interconnected. Cable routing through the base and below the top is possible.



We offer different systems for media flaps / service panels and cable routing for power and data connection.



**Note:** We will gladly design your custom-made conference table. Please feel free to contact us.



Base	Top(s)	Width	Length	Height
Base 2 Standard	1	95 - 110	160 - 260	73
Base 2 Magnum	1	111 - 130	261 - 300	73.5
Base 2 Magnum	2	111 - 130	301 - 380	73.5
2x Base 2 Standard lengthwise	2	95 - 110	301 - 580	73
2x Base 2 Magnum lengthwise	2	111 - 130	381 - 600	73.5
2x Base 2 Standard transverse	2	131 - 150	301 - 580	73
2x Base 2 Magnum transverse	2	131 - 150	381 - 600	73.5

