

# 57

semi-rigid

A fabrication process whereby air voids of different sizes and configurations are composed within a larger mass of dark grey or white opaline glass. These air pockets are invisible when the piece is unlit, and come alive to reveal an interior universe when 57 is illuminated. By virtue of the method of making, each 57 is completely unique. A flexible suspension system enables pendants to be nestled in close-knit groups or loosely composed in a wider field, allowing each piece to be perceived individually.



**BOCCI**

© 2021, Bocci Design and Manufacturing Inc.  
Any inquiries should be directed to: [info@bocci.com](mailto:info@bocci.com)

57  
semi-rigid

#### Lamping

1.5w LED  
(additional 0.18w LED light  
source for light mirrored  
and white opaline pendant)

#### Material

blown and dipped glass, cast borosilicate glass  
cap, powder coated steel and brass hardware,  
swag hooks, braided metal coaxial cable, aircraft  
cable, electrical components, and brass or white  
powder coated canopy.

#### Patent

EU Patent # 000268581-0001 to 0006  
US Patent # 7,96 732



LOW VOLTAGE LUMINAIRE  
E476186

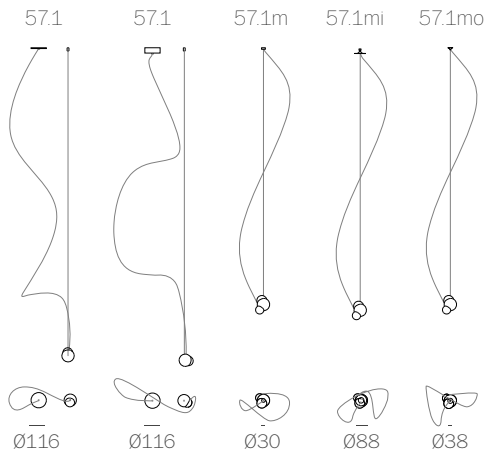
±100-165  
(4"-6")

# 57

semi-rigid

## Adjustable Length

Random canopies

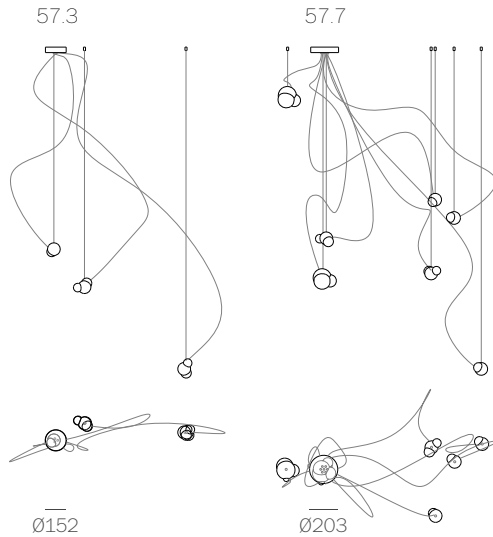


adjustable  
up to  
3000 (10')  
standard

adjustable  
up to  
24600  
(80')  
custom

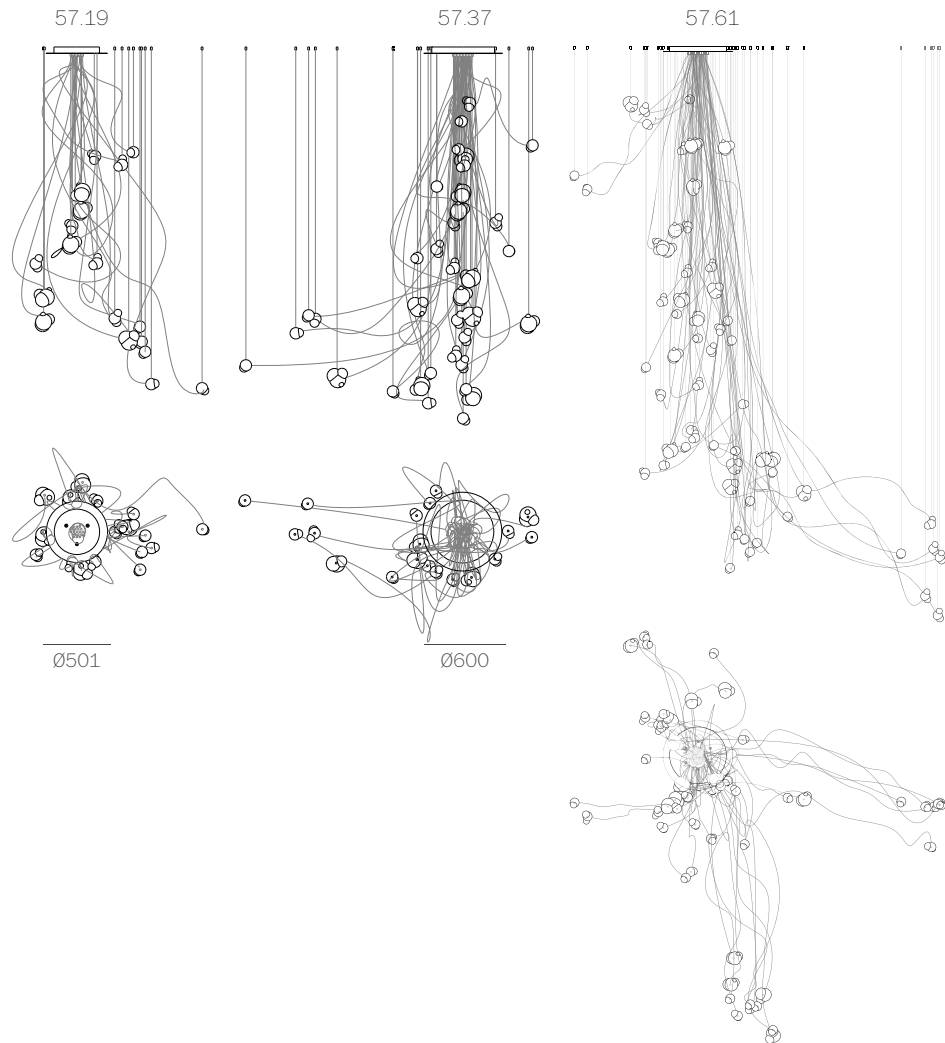
## Adjustable Length

Cluster canopies



## Fixed Lengths

Cluster canopies

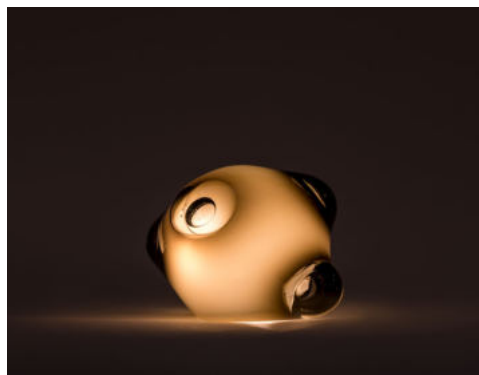
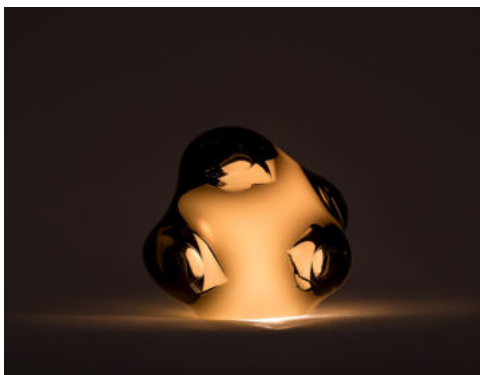
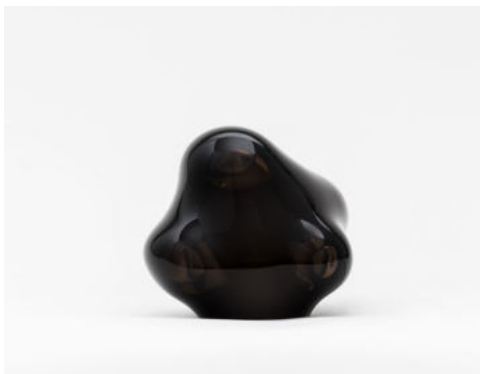


fixed  
length  
up to  
3000 (10')  
standard

fixed  
length  
up to  
24600  
(80')  
custom

# 57

colour options



White opaline

Grey

Dark mirrored

Light mirrored

57  
semi-rigid



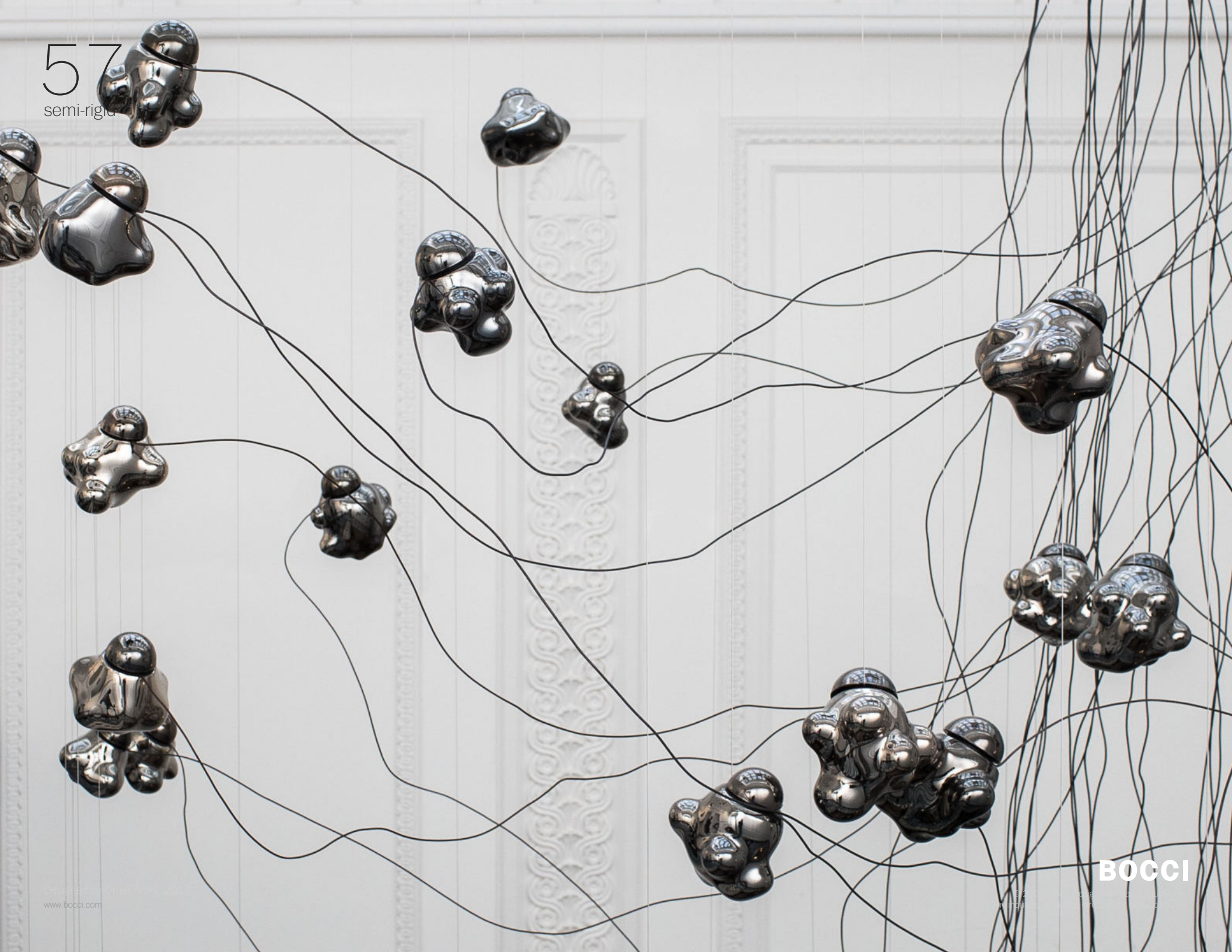
57  
semi-rigid





57

semi-rigida



BOCCI



57  
semi-rigid

Designed by Omer Arbel, 2013  
[www.bocci.com](http://www.bocci.com)

**BOCCI**

© 2021, Bocci Design and Manufacturing Inc.  
Any inquiries should be directed to: [info@bocci.com](mailto:info@bocci.com)