

ATMOSPHERA



LOW TABLES, LOW TABLES AND SERVANTS

Flash Low Table

Design by Atmospha Creative Lab

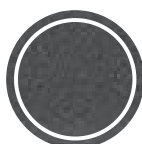
Structure in epoxy painted aluminum for outdoors.
Table top in 10 mm thick tempered glass with stone effect.

Cover sheet available on request

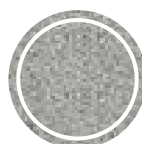
Dimensions: 75 x 120 x 28 cm **Weight:** 9 Kg **Volume:** 0.3 m³



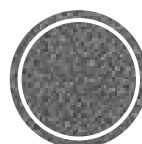
White aluminum



Graphite aluminum

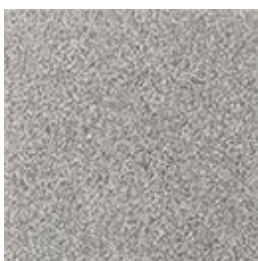
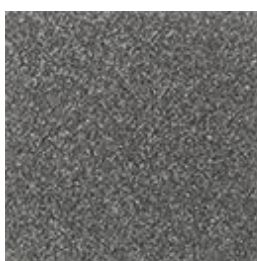


Light stone effect glass



Dark stone effect glass

Product details



Piano tavolo in vetro temperato spessore 10 mm con effetto pietra dal lato a vista. La superficie verniciata effetto pietra del top è idro e oleo-repellente, resistente ai raggi UV, agli agenti atmosferici e adatta agli ambienti esterni. Disponibile in due colori.

