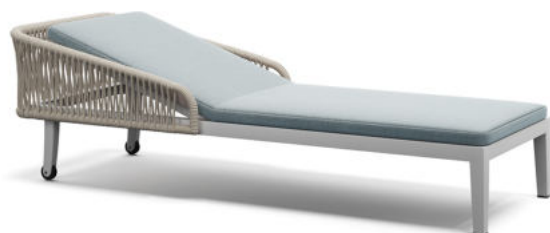


ATMOSPHERA



SUNBEDS AND CHAISE LONGUE

Dream 2.0 Sunbed

Design by Atmospha Creative Lab

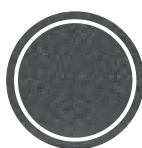
Sunbed with epoxy painted aluminum structure for outdoor use, hand-woven with Teflon acrylic thermoplastic fiber, water-repellent and easy to clean. The material is elastic and has a soft appeal similar to textile weaves, characterized by its resistance to UV rays and its drying speed. Stackable cot.

Cover sheet available on request

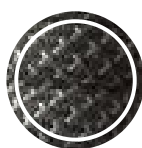
Dimensions: 205 x 72 x 53 cm **Weight:** 36 Kg **Volume:** 0.80 m³
Seat height: 29 cm



White aluminum



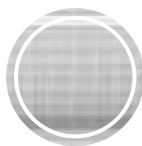
Graphite aluminum



Rope tk-r12t



Rope tk-r16t



White textilene



Graphite Textilene

