

ATMOSPHERA



TABLE AND TABLE BASE

Bridge Extendible Table

Designed by Atmosphera Creative Lab

The bridge is not just an engineering work or a frame for the landscape, but also a walkway towards the future, a link between cultural identities and the real sharing of different worlds. Bridge is born from the inspiration, it's an extendible aluminium table of the new collection, with stoneware top, available in 2 finishes, accomodates up to 12 guests.

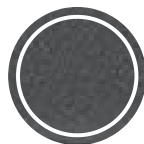
Robust, minimal, and practical: in one word, Bridge.

Cover available on request

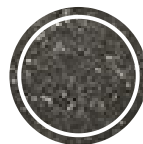
Size: 220 - 280 - 340 x 100 x 78 cm **Weight:** 127 Kg **Volume:** 1,6 m3



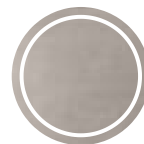
White aluminium



Graphite aluminium



Gres noir belge ne 30 nat



Gres Sugar Glocal gc 07 sp

