
Soft

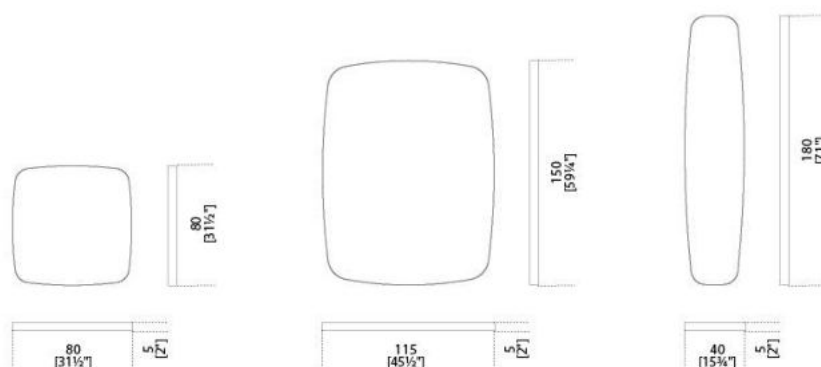
Studio G&R
2014



Specchio naturale 6mm con cornice (profondità 5cm) rivestita in pelle scamosciata nei colori del campionario. Non realizzabile su misura.

6mm mirror with frame (thickness 5cm) covered by suede as per samples. Not available in custom size.

*Dimensioni / Sizes
Cm (L x H)
80 x 80
115 x 150
40 x 180*





Soft

Finiture / Finishes

Pelle Cat.L1 / Leather Cat.L1



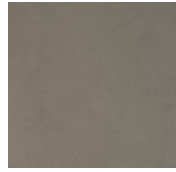
Suede grey 020
Suede grey 020



Suede grey 058
Suede grey 058



Suede grey 074
Suede grey 074



Suede sand
006
Suede sand
006



Suede sand 012
Suede sand 012

Cristallo / Glass



Specchio
extralight
Extralight
mirror
