
Tama

Carlo Colombo
2015



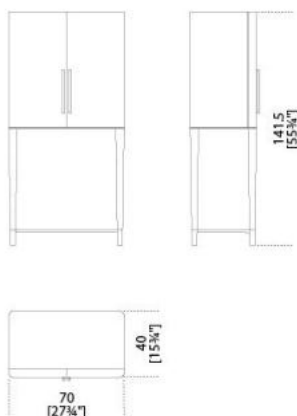
Tama

Carlo Colombo , 2015

Mobile bar in frassino tinto nero poro aperto con parti metalliche laccato ottone satinato. Interno rivestito in specchio 4mm "grigio Italia" inciso. Ripiano interno in cristallo "Grigio Italia" 8mm temperato. Dotato di luce interna LED (15 watt). (LED 15W - 108lm/w, 3000K).

Black open pore lacquered ash wooden bar unit and satin brass lacquered metal parts. Inside covered by 4mm tempered engraved smoked "grigio Italia" mirror. Supplied with 8mm tempered smoked "grigio Italia" glass shelf. Supplied with LED light (15 Watt). (LED 15W - 108lm/w, 3000K)

Dimensioni / Sizes
Cm (L x P x H)
70 x 40 x 141,5





Metallo / Metal



Ottone satinato
Satin brass

Legno Layer / Wood Layer



Nero poro
aperto
Black open pore

Cristallo / Glass



Specchio
"grigio Italia"
Grigio "Italia"
mirror