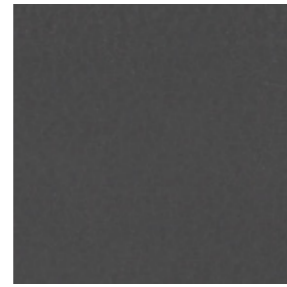




SEMIOPAQUE BLACK



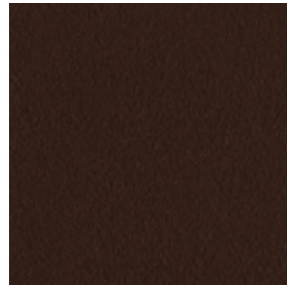
SEMIOPAQUE WHITE



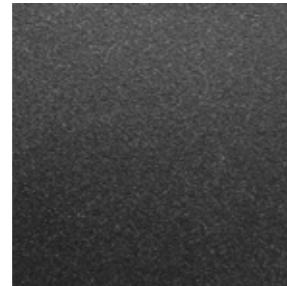
GUNMETAL COLOUR



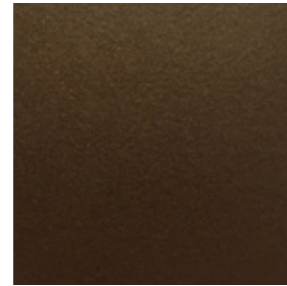
EMBOSSED WHITE



EMBOSSED RUST COLOUR



MICACEOUS GREY



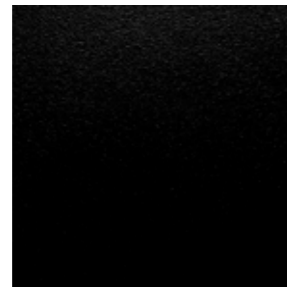
BRONZE COLOUR



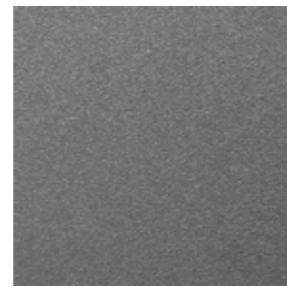
COPPER BLACK SAND-TOUCH



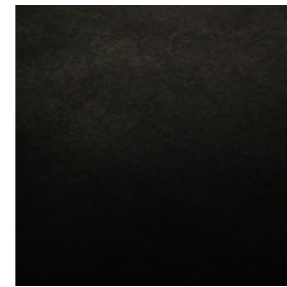
CONCRETE GREY



EMBOSSED BLACK



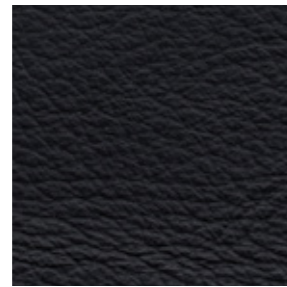
EMBOSSED ALUMINIUM COLOUR



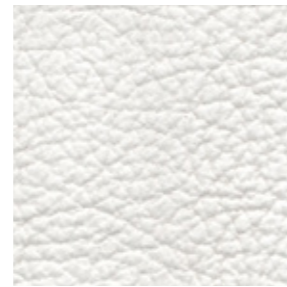
BLACK PHOSPHATIZED SHEET STEEL
**See info at page 162*



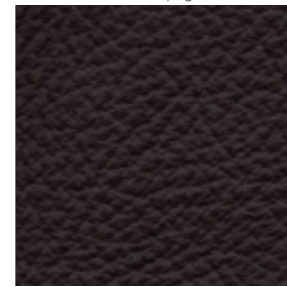
BLACK THOUSAND POINTS RUBBER



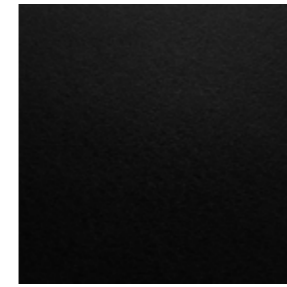
BLACK LEATHER



WHITE LEATHER



DARK BROWN LEATHER



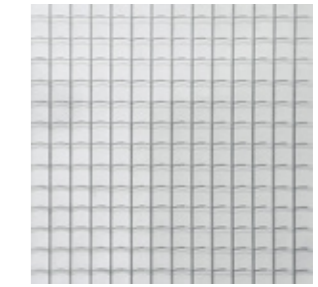
BLACK LINOLEUM



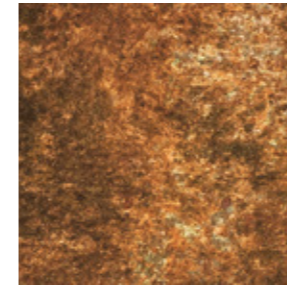
HPL RUSTY FINISH



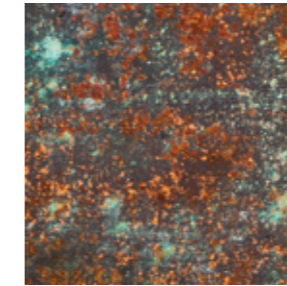
HPL OXYDATION EFFECT



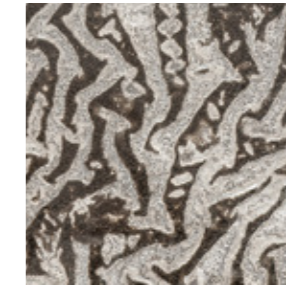
WIRE GLASS



ARTISTIC RUSTY TREATMENT
**See info at page 162*



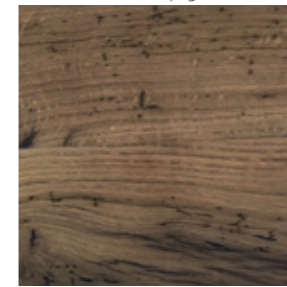
ARTISTIC RUSTY TREATMENT
**See info at page 162*



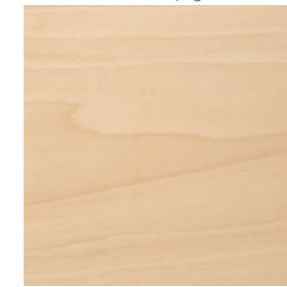
ARTISTIC GLASS
**See info at page 162*



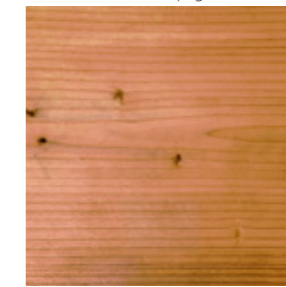
EXTRACLEAR SANDBLASTED
PATTERNED GLASS



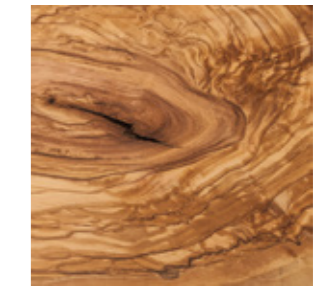
AGED SOLID OAK WOOD



SOLID POPLAR WOOD



AGED SOLID WOOD
For Slim Irony low tables



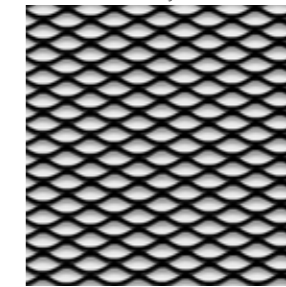
AGED SOLID OLIVE WOOD
**See info at page 162*



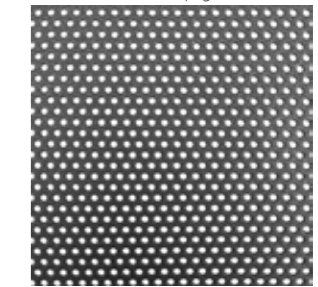
GREY FELT



BLACK FELT



EXPANDED METAL



EXPANDED METAL
For Ginger