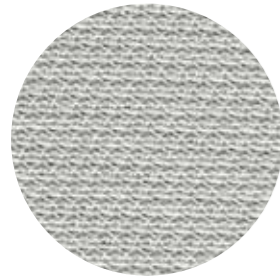


CATEGORY B / CATEGORIA B

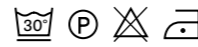


B 01



B 02

technical specifications / specifiche tecniche

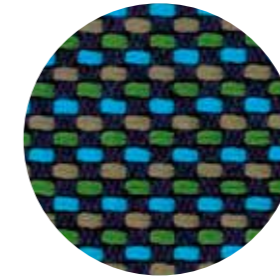


- **COMPOSITION / COMPOSIZIONE**
100% Nylon (Support film PVC)
- **ABRASION / ABRASIONE**
>50.000 cycles, Martindale (UNI EN ISO 12947:00)
- **RUBBING FASTNESS / SOLIDITÀ ALLO SFREGAMENTO**
5, scale 1-5 (UNI EN ISO 105 X12:97)
- **PILLING**
5, scale 1-5 (UNI EN ISO 12945-2:00)
- **LIGHT FASTNESS / SOLIDITÀ ALLA LUCE**
5, scale 1-8 (UNI EN ISO 105-B02:01)

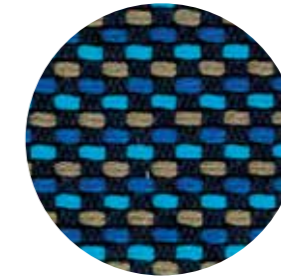
CATEGORY C / CATEGORIA C



C 37



C 38

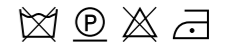


C 39



C 36

technical specifications / specifiche tecniche

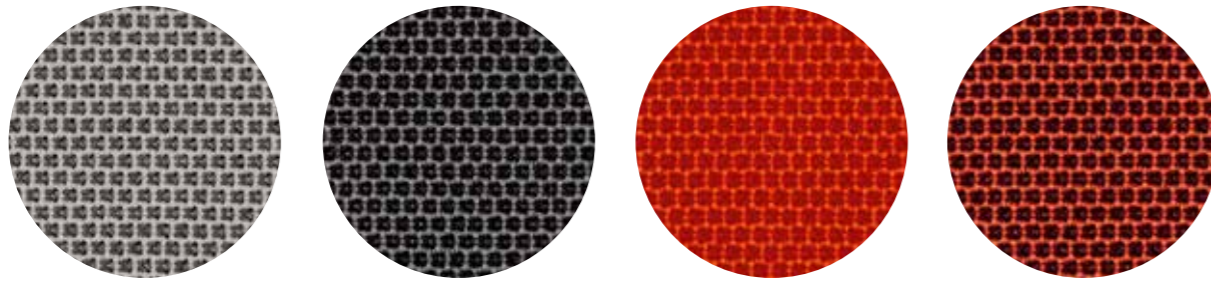


- **COMPOSITION / COMPOSIZIONE**
94% Cotton
6% Polyamide
- **ABRASION / ABRASIONE**
40.000 cycles, Martindale (BS EN ISO 12947-2 1999)
- **RUBBING FASTNESS / SOLIDITÀ ALLO SFREGAMENTO**
Dry 4-5 and Wet 2-3, scale 1-5 (BS EN ISO 105-X12:1995)
- **PILLING**
4, scale 1-5 (BS EN ISO 12945-2:2001 to 5.000 cycles)
- **LIGHT FASTNESS / SOLIDITÀ ALLA LUCE**
4-5 (light colours)
5 (medium-dark colours) (BS EN ISO 105-B02:2001)

only for collection / solo per collezioni



Island

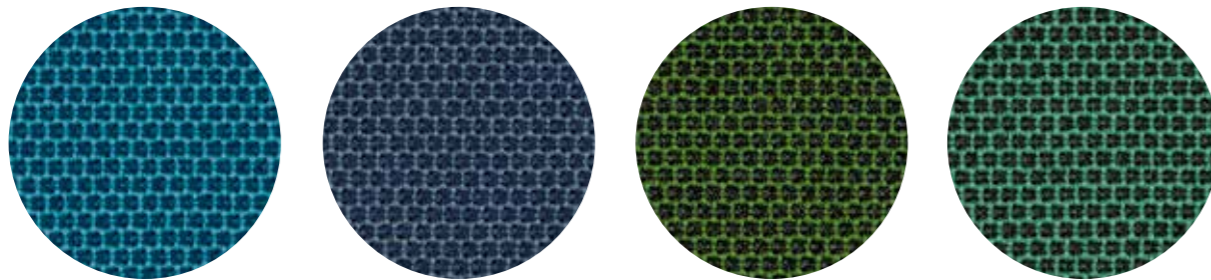


C 101

C 86

C 85

C 89

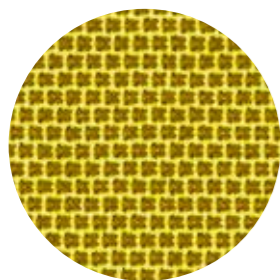


C 83

C 100

C 84

C 88



C 87

technical specifications / specifiche tecniche



- COMPOSITION / COMPOSIZIONE
54% New Zealand Wool
44% Post-consumer recycled, polyester
2% Polyamide
- ABRASION / ABRASIONE
100.000 cycles, Martindale
(EN ISO 12947-2)

- RUBBING FASTNESS / SOLIDITÀ ALLO SFREGAMENTO
Dry and Wet 4-5, scale 1-5
(EN ISO 105-X12:1995)
- PILLING
4-5, scale 1-5 (EN ISO 12945-2)
- LIGHT FASTNESS / SOLIDITÀ ALLA LUCE
5-7, scale 1-8 (EN ISO 105-B02)

- FLAME RESISTANCE
RESISTENZA AL FUOCO
BS EN 1021 1&2
BS EN 1021-1
BS 5852 Part 1 0, 1
US CA TB 117-2013

- APPROVED / OMOLOGATO

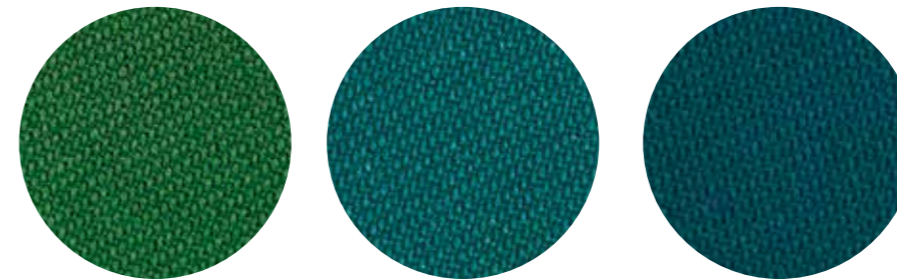


C 110

C 111

C 112

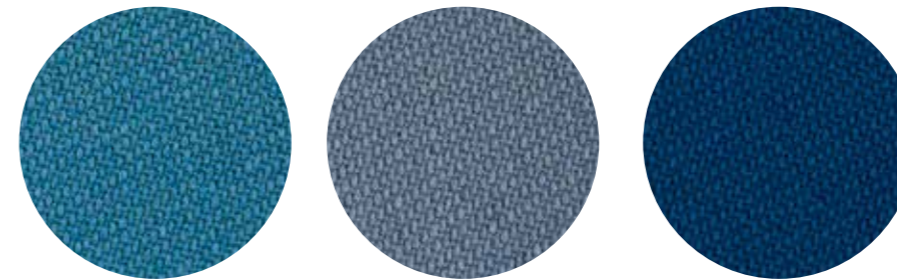
C 113



C 117

C 118

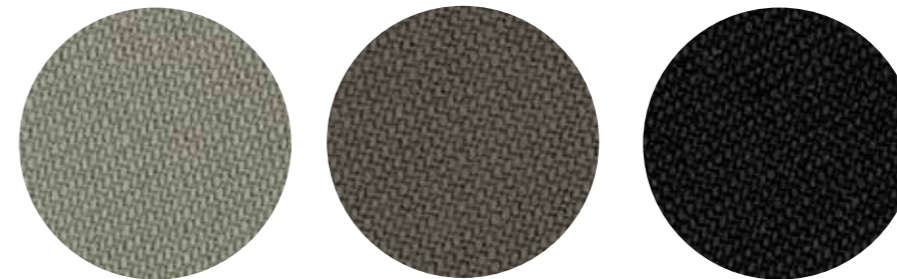
C 119



C 120

C 121

C 122



C 114

C 115

C 116

technical specifications / specifiche tecniche

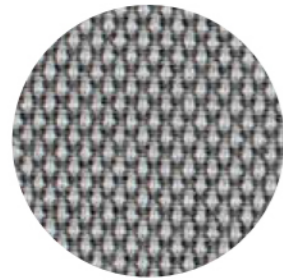
- APPROVED / OMOLOGATO



- COLLECTION / COLLEZIONE
svensson - SEMI
- COMPOSITION / COMPOSIZIONE
85% Wool, 15% Polyamide
- ABRASION / ABRASIONE
100.000 cycles,
Martindale
(EN ISO 12947-2)
- RUBBING FASTNESS
SOLIDITÀ ALLO SFREGAMENTO
Dry 4 and Wet 3-4, scale 1-5
(EN ISO 105-X12)
- LIGHT FASTNESS
SOLIDITÀ ALLA LUCE
5-7, scale 1-8
(EN ISO 105-B02)
- FLAME RESISTANCE / RESISTENZA AL FUOCO
BS 5852 Crib 5
EN ISO 1021 Part 1&2
IMO FTP Code 2010: Part 8
UNI 9175 e UNI 9175/FA1 Classe 1 IM



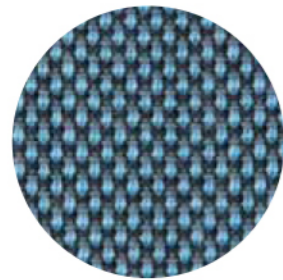
CATEGORY D / CATEGORIA D



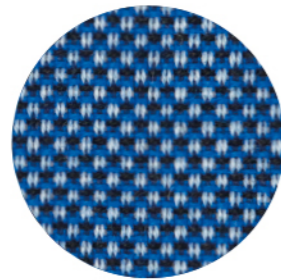
D 40



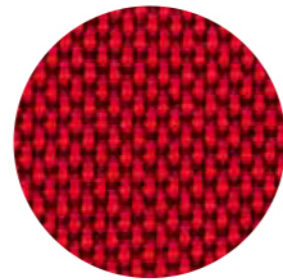
D 41



D 43



D 44



D 42

technical specifications / specifiche tecniche

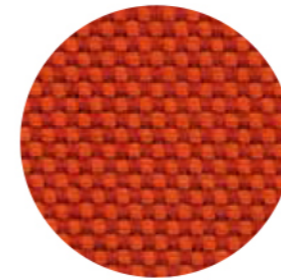


- **COMPOSITION / COMPOSIZIONE**
88% New Zealand Wool
12% Polyamide
- **ABRASION / ABRASIONE**
100.000 cycles, Martindale
(EN ISO 12947-2)
- **RUBBING FASTNESS / SOLIDITÀ ALLO SFREGAMENTO**
Dry and Wet 4-5, scale 1-5
(EN ISO 105-X12)
- **PILLING**
4-5, scale 1-5 (EN ISO 12945-2)
- **LIGHT FASTNESS / SOLIDITÀ ALLA LUCE**
5-7, scale 1-8 (EN ISO 105-B02)
- **FLAME RESISTANCE / RESISTENZA AL FUOCO**
BS EN 1021 1&2
BS 5852 Part 1 0, 1
UNI 9175 Classe 1 IM
US CA TB 117-2013

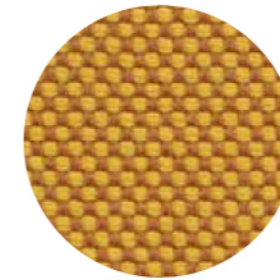
- APPROVED / OMOLOGATO



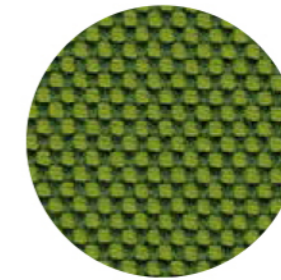
CATEGORY G / CATEGORIA G



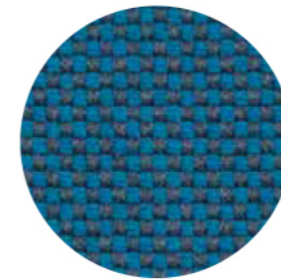
G 170



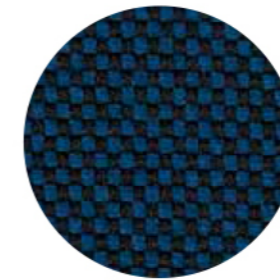
G 171



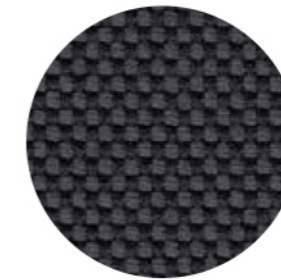
G 172



G 173



G 174



G 175



G 176

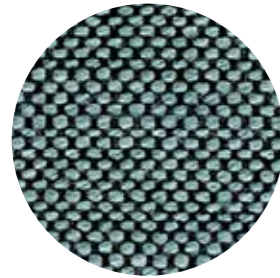
technical specifications / specifiche tecniche



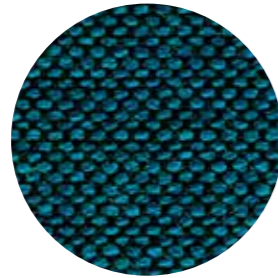
- **COMPOSITION / COMPOSIZIONE**
96% Virgin Wool
4% Polyamide
- **ABRASION / ABRASIONE**
90.000 cycles, Martindale
(DIN EN ISO 12947-2)
- **PILLING**
4-5, scale 1-5 (EN ISO 12945-2)
- **LIGHT FASTNESS / SOLIDITÀ ALLA LUCE**
5-8, scale 1-8 (EN ISO 105-B02)
- **SOUND ABSORPTION / ASSORBIMENTO ACUSTICO**
folded: $\alpha_w = 0.95$ Class A (ISO 11654)
- **FLAME RESISTANCE / RESISTENZA AL FUOCO**
BS 5852:1979 (Part 1)
BS 5852:2006 (Part 2) Crib 5
DIN 4102-1 B2
- **EN 13501-1**
EN 1021 -1 and -2
FAR 25.853 (12 sec. vertical)
IMO: 2014/90/EU (MED)
US CA TB 117-2013

- APPROVED / OMOLOGATO

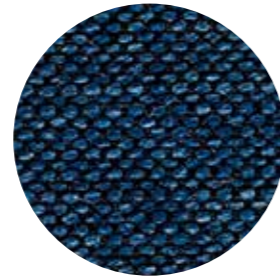




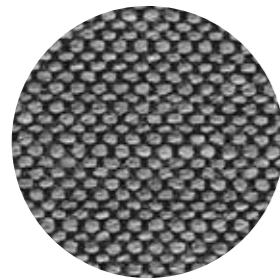
G 154



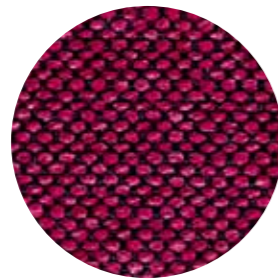
G 155



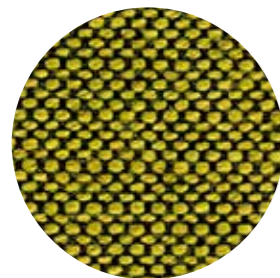
G 156



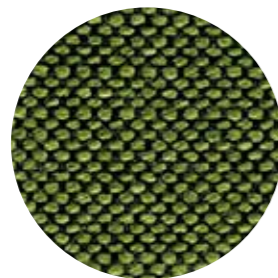
G 151



G 150



G 152



G 153

technical specifications / specifiche tecniche

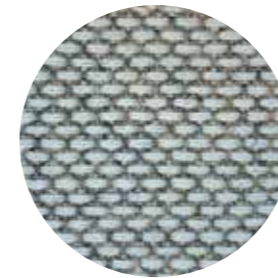


- COLLECTION / COLLEZIONE
svensson - BALANCE
- COMPOSITION / COMPOSIZIONE
82% Wool
12% Rami
6% Polyamide

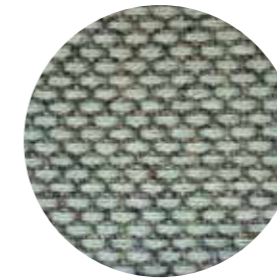
- ABRASION / ABRASIONE
100.000 cycles, Martindale (EN ISO 12947-2)
- RUBBING FASTNESS / SOLIDITÀ ALLO SFREGAMENTO
Dry 4 and Wet 3-4, scale 1-5
(EN ISO 105-X12)
- LIGHT FASTNESS / SOLIDITÀ ALLA LUCE
5-7, scale 1-8 (EN ISO 105-B02)

- FLAME RESISTANCE / RESISTENZA AL FUOCO
BS 5852 Crib 5
EN ISO 1021 Part 1&2
IMO FTP Code 2010: Part 8
UNI 9175 Classe 1 IM
US CA TB 117-2013

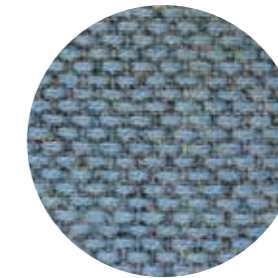
- APPROVED / OMOLOGATO



G 143



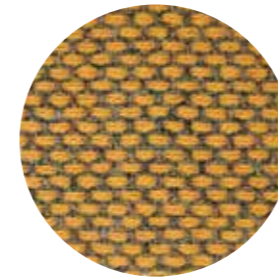
G 145



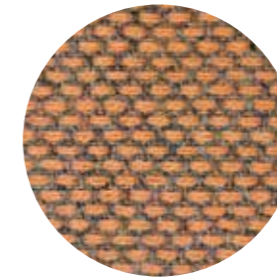
G 144



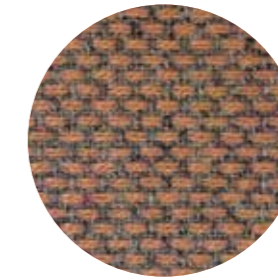
G 146



G 140



G 141



G 142

technical specifications / specifiche tecniche



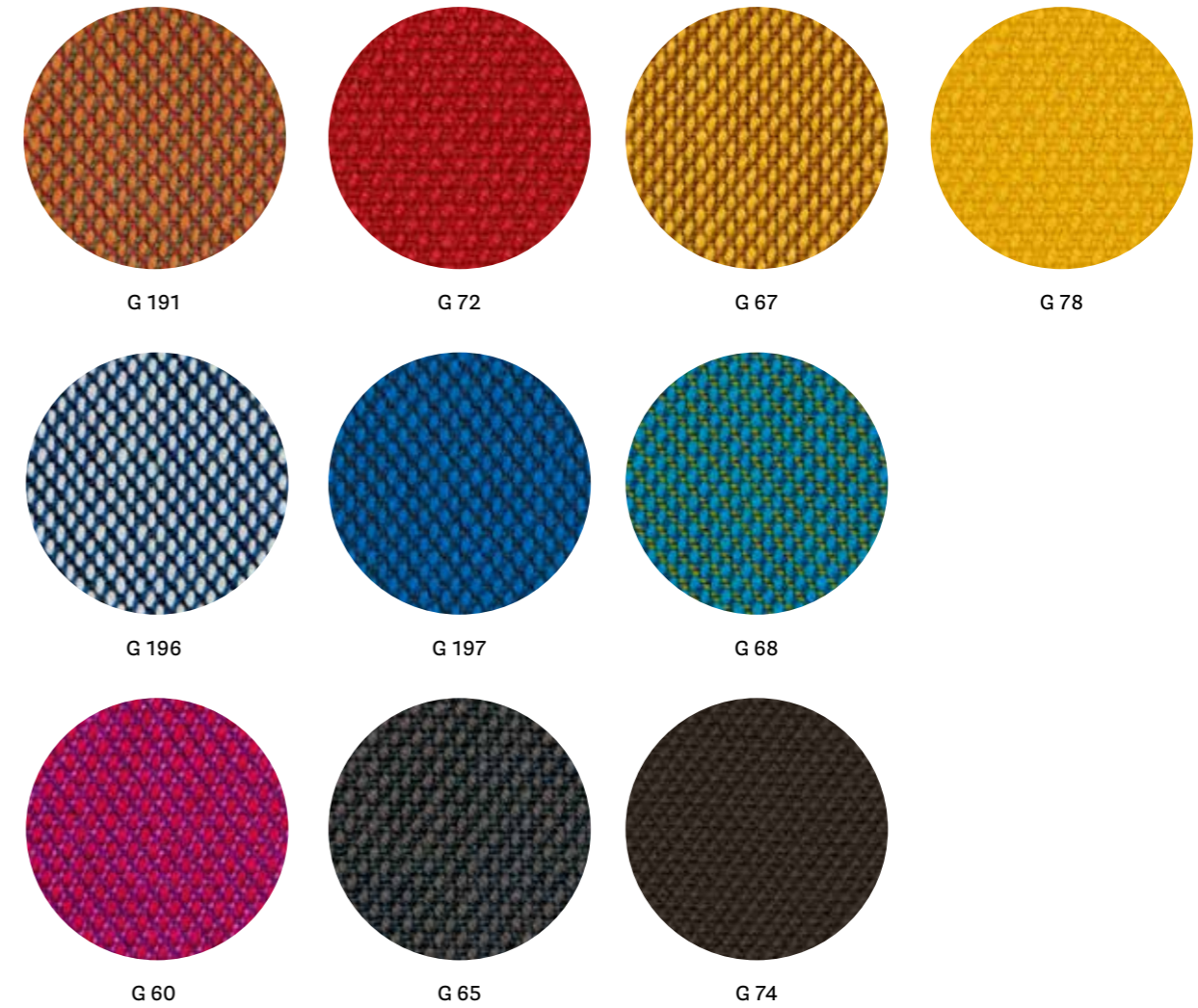
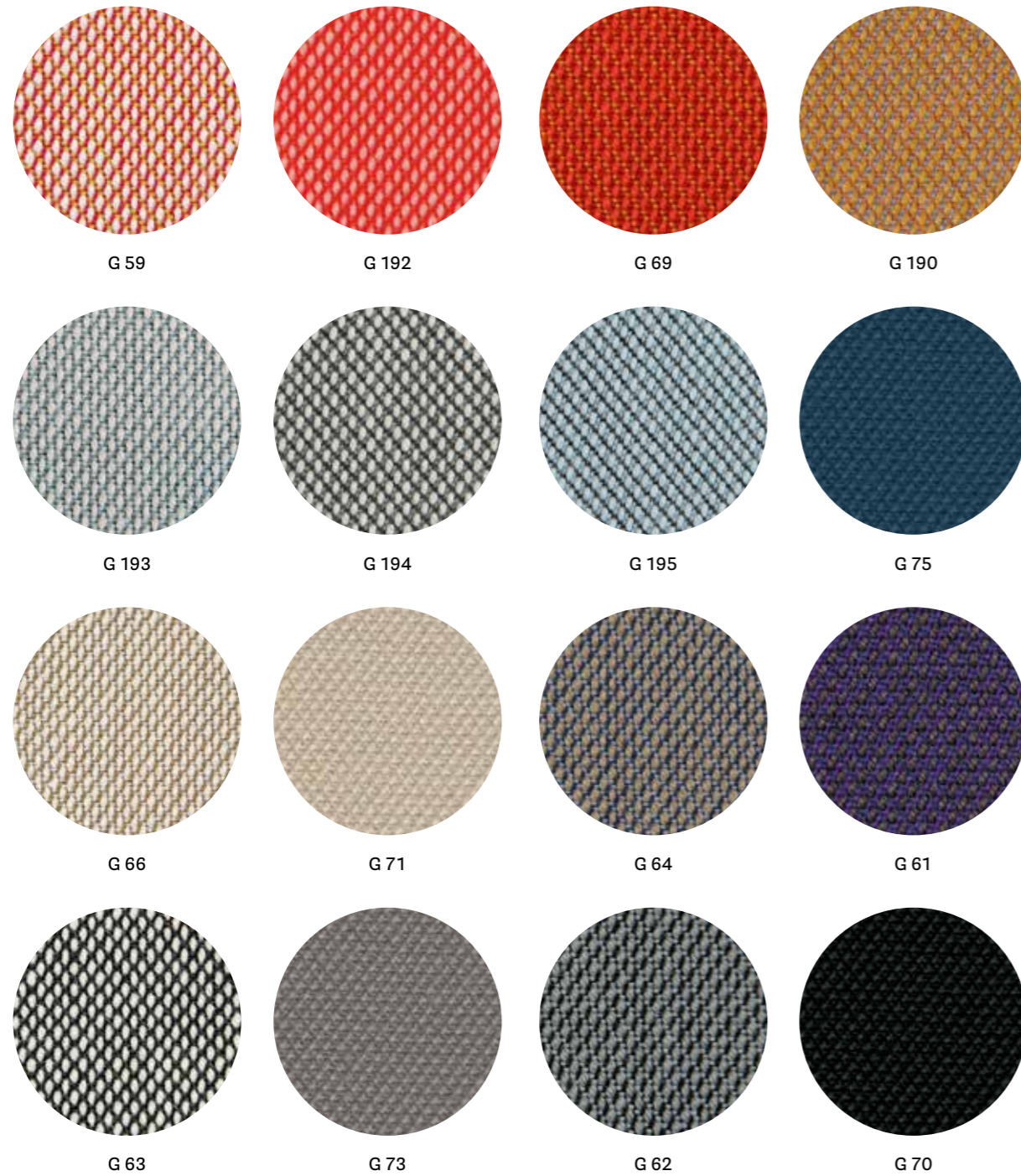
- COLLECTION / COLLEZIONE
kvadrat - RE-WOOL
DESIGNER Margrethe Odgaard
- COMPOSITION / COMPOSIZIONE
45% Recycled wool
45% New wool
10% Nylon
- ABRASION / ABRASIONE
50.000 cycles, Martindale
(DS/EN ISO 12947-2:2016)

- RUBBING FASTNESS / SOLIDITÀ ALLO SFREGAMENTO
Dry and Wet 4-5, scale 1-5
(ISO 105-X12)
- PILLING
4, scale 1-5 (EN ISO 12945)
- LIGHT FASTNESS / SOLIDITÀ ALLA LUCE
5-7, scale 1-8 (ISO 105-B02:2014)
- SOUND ABSORPTION / ASSORBIMENTO ACUSTICO
folded: $\alpha_w = 0.75$ Class C (ISO 11654)

- FLAME RESISTANCE / RESISTENZA AL FUOCO
AS/NZS 1530.3
BS 5852 Part 1
BS 5852 Crib 5 with treatment
BS 5852 IGNITION SOURCE 3
EN 1021 - 1/2
IMO FTP Code 2010: Part 8
NF D60-013
ÖNORM B1/Q1
UNI 9175 Classe 1IM
US CA TB 117-2013

- APPROVED / OMOLOGATO





technical specifications / specifiche tecniche



- COLLECTION / COLLEZIONE
kvadrat
STEELCUT TRIO 3
except
G61, G60, G68: STEELCUT TRIO 2
G70+G78: STEELCUT 2
DESIGNERS Dijkmeijer & Ridolfo
- COMPOSITION / COMPOSIZIONE
90% New wool
10% Nylon
- ABRASION / ABRASIONE
100.000 cycles,
for G70+G78: 80.000 cycles
Martindale (DS/EN ISO 12947-2:2016)

- PILLING
4, scale 1-5
for G70+G78: 3-4, scale 1-5
(EN ISO 12945)
- LIGHT FASTNESS / SOLIDITÀ ALLA LUCE
5-7, scale 1-8 (EN ISO 105-B02)
- SOUND ABSORPTION / ASSORBIMENTO ACUSTICO
folded: $\alpha_w=0.95$ Class A
for G70+G78: folded: $\alpha_w=0.80$ Class B
(ISO 11654)
- FLAME RESISTANCE / RESISTENZA AL FUOCO
AS/NZS 1530.3
AS/NZS 3837 Class 2
BS 5852 Part 1

BS 5852 Crib 5 with treatment
DIN 4102 B2
EN 1021 - 1/2
IMO FTP Code 2010: Part 8
NF D60-013
NFPA 260
ÖNORM B1/Q1
SN 198 898 5.3 with treatment
UNI 9175 Classe 1 IM
US CA TB 117-2013

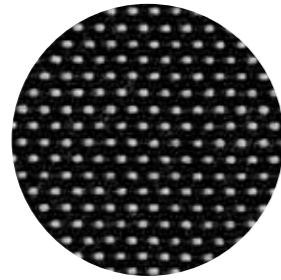
- APPROVED / OMOLOGATO



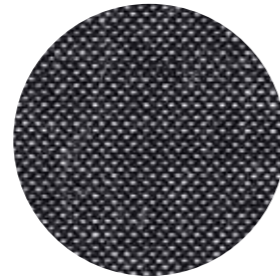
CATEGORY G / CATEGORIA G



G 101



G 100



G 102

technical specifications / specifiche tecniche



- COLLECTION / COLLEZIONE
kvadrat - BASEL
DESIGNERS Herzog & de Meuron
- COMPOSITION / COMPOSIZIONE
90% New wool
10% Nylon
- ABRASION / ABRASIONE
50.000 cycles,
Martindale (EN ISO 12947-2:1998)

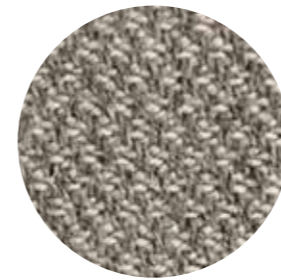
- PILLING
4, scale 1-5 (EN ISO 12945)
- LIGHT FASTNESS / SOLIDITÀ ALLA LUCE
6-7, scale 1-8 (ISO 105-B02)
- FLAME RESISTANCE / RESISTENZA AL FUOCO
AS/NZS 3837 Class 2
BS 5852 Part 1
BS 5852 Crib 5 with treatment

DIN 4102 B2
EN 1021 - 1/2
IMO FTP Code 2010: Part 8
NFPA 260
NF D60-013
ÖNORM B1/Q1
SN 198 898 5.3 with treatment
UNI 9175 Classe 1 IM
US CA TB 117-2013

- APPROVED / OMOLOGATO



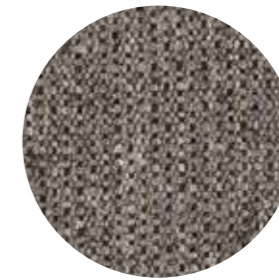
CATEGORY G / CATEGORIA G



G 120



G 121



G 122

technical specifications / specifiche tecniche



- COLLECTION / COLLEZIONE
kvadrat - MOLLY 2
DESIGNER Åsa Pärson
- COMPOSITION / COMPOSIZIONE
100% New wool
- ABRASION / ABRASIONE
75-100.000 cycles,
Martindale (EN ISO 12947-2:1998)

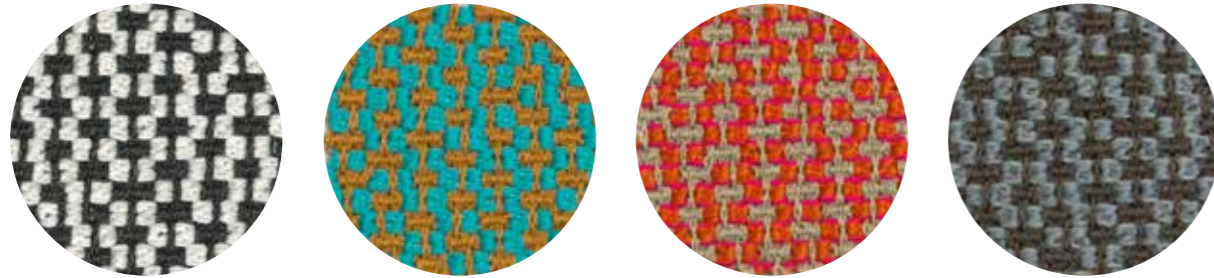
- PILLING
3-4, scale 1-5 (EN ISO 12945)
- LIGHT FASTNESS / SOLIDITÀ ALLA LUCE
6-7, scale 1-8 (ISO 105-B02)
- FLAME RESISTANCE / RESISTENZA AL FUOCO
BS 5852 Part 1
BS 5852 Crib 5 with treatment
DIN 4102 B2

EN 1021 - 1/2
IMO FTP Code 2010: Part 8
NFPA 260
NF D60-013
ÖNORM B1/Q1
UNI 9175/UNI 9176 Classe 1 IM
US CA TB 117-2013

- APPROVED / OMOLOGATO



CATEGORY G / CATEGORIA G



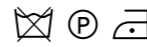
G 130

G 131

G 132

G 133

technical specifications / specifiche tecniche



- COMPOSITION / COMPOSIZIONE
95% Virgin Wool
5% Polyamide
- ABRASION / ABRASIONE
52.000 cycles, Martindale
(DIN EN ISO 12947-2)
- PILLING
4-5, scale 1-5 (EN ISO 12945-2)

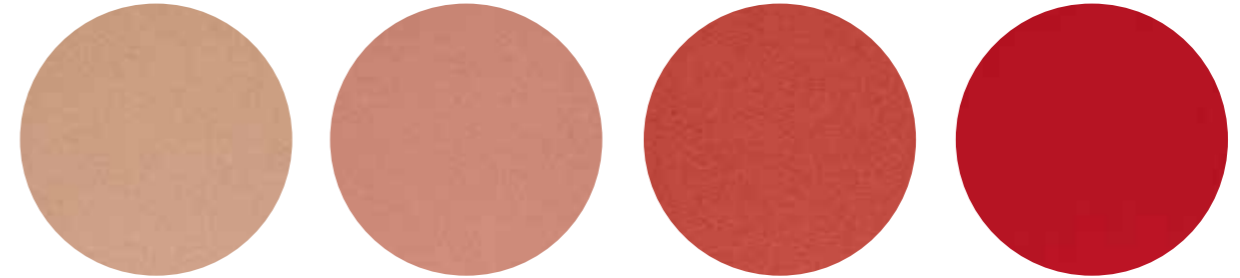
- LIGHT FASTNESS / SOLIDITÀ ALLA LUCE
5-8, scale 1-8 (EN ISO 105-B02)
- SOUND ABSORPTION / ASSORBIMENTO ACUSTICO
folded: $\alpha_w = 0.85$ Class B (ISO 11654)
- FLAME RESISTANCE / RESISTENZA AL FUOCO
BS 5852:1979 (Part 1)
BS 5852:2006 (Part 2) Crib 5
DIN 4102-1 B2

EN 1021 -1 and -2
EN 13501-1
FAR 25.853 (12 sec. vertical)
IMO: 2014/90/EU (MED)
UNI 9175 Classe 1 IM
US CA TB 117-2013

- APPROVED / OMOLOGATO



CATEGORY G / CATEGORIA G

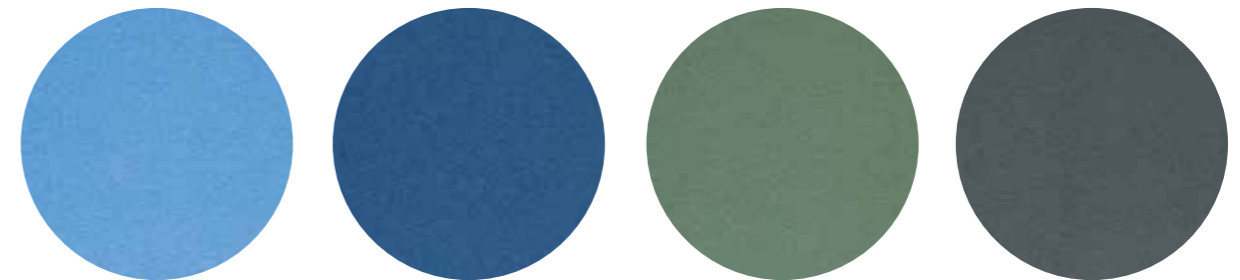


G 163

G 160

G 161

G 162

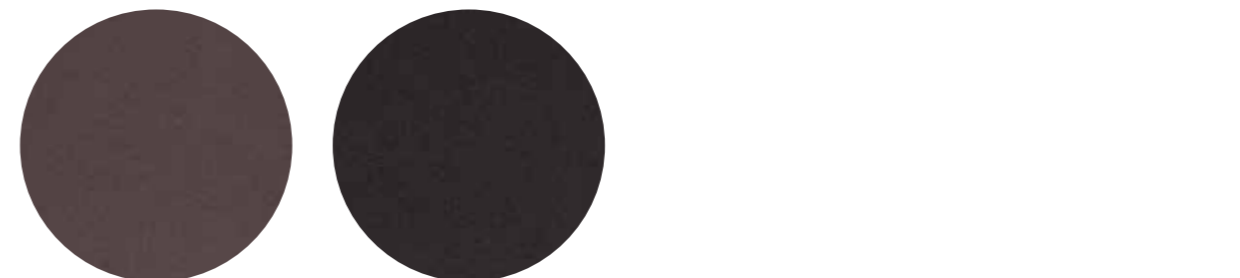


G 165

G 166

G 167

G 168



G 164

G 169

technical specifications / specifiche tecniche



- COLLECTION / COLLEZIONE
kvadrat - HERO
DESIGNER Patricia Urquiola
- COMPOSITION / COMPOSIZIONE
96% New wool
4% Nylon
- ABRASION / ABRASIONE
45.000 cycles, Martindale
(EN ISO 12947)
- PILLING
3-4, scale 1-5 (EN ISO 12945)

- LIGHT FASTNESS / SOLIDITÀ ALLA LUCE
5-6, scale 1-8 (ISO 105-B02)
- SOUND ABSORPTION / ASSORBIMENTO ACUSTICO
folded: $\alpha_w = 0.75$ Class C (ISO 11654)
- FLAME RESISTANCE / RESISTENZA AL FUOCO
AS/NZS 3837 Class 2
BS 5852 Crib 5 with treatment
BS 5852 Part 1
DIN 4102 B2
EN 1021 - 1/2
IMO FTP Code 2010: Part 8

NF D60-013
NFPA 260
SN 198 898 5.3 with treatment
UNI 9175 Classe 1 IM
US CA TB 117-2013

- APPROVED / OMOLOGATO



CATEGORY G / CATEGORIA G



G 24

G 114

G 115

G 113

G 111

G 116

G 110

G 112

G 21

G 25

G 22

G 23

technical specifications / specifiche tecniche



- **COLLECTION / COLLEZIONE**
kvadrat
G21, G22, G25: DIVINA MELANGE 2
G24, G23: DIVINA MELANGE 3
G110+G116: DIVINA MD
DESIGNER Finn Skødt
- **COMPOSITION / COMPOSIZIONE**
100% New Wool
- **ABRASION / ABRASIONE**
45.000 cycles, Martindale
(EN ISO 12947)
- **PILLING**
3, scale 1-5 (EN ISO 12945)

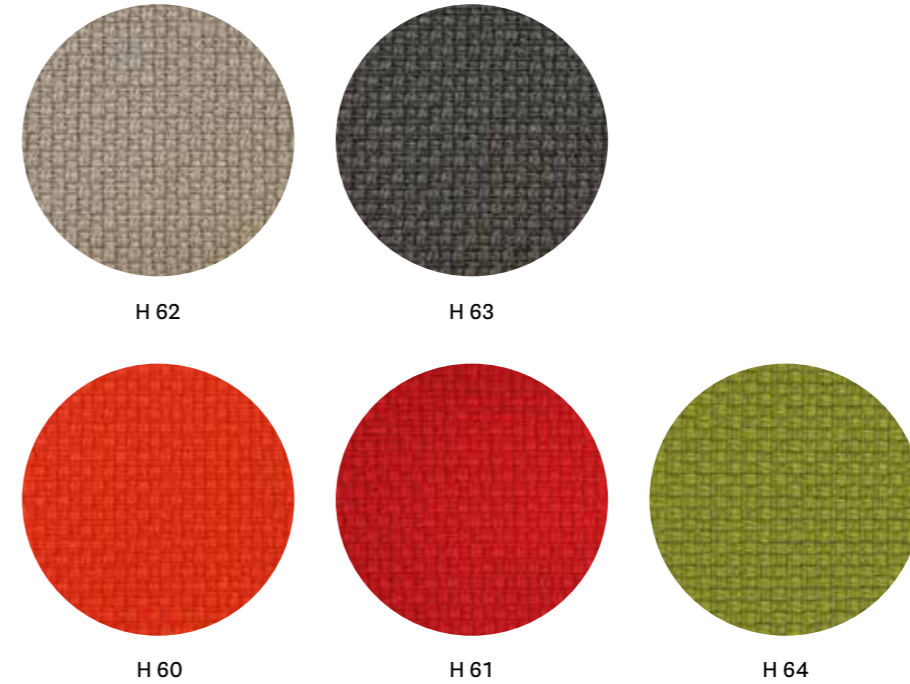
- **LIGHT FASTNESS / SOLIDITÀ ALLA LUCE**
5-7, scale 1-8 (ISO 105-B02)
- **SOUND ABSORPTION / ASSORBIMENTO ACUSTICO**
folded: $\alpha_w = 0.70$ Class C (ISO 11654)
- **FLAME RESISTANCE / RESISTENZA AL FUOCO**
AS/NZS 1530.3
BS 5852 Crib 5
BS 5852 Part 1
BS 5867 part 2 type B (only for G23, G24)
DIN 4102 B2
EN 1021-1/2
EN 13501, C-s1, d0, glued
IMO FTP Code 2010: Part 8

NF D60013
NFPA 260
ÖNORM B1/ Q1
SN 198 898 5.3 with treatment
UNI 9175 Classe 1 IM
US CA TB 117-2013

- **APPROVED / OMOLOGATO**



CATEGORY H / CATEGORIA H



H 62

H 63

H 60

H 61

H 64

technical specifications / specifiche tecniche



- **COMPOSITION / COMPOSIZIONE**
92% New Zealand Wool
8% Polyamide
- **ABRASION / ABRASIONE**
200.000 cycles, Martindale
(EN ISO 12947-2)

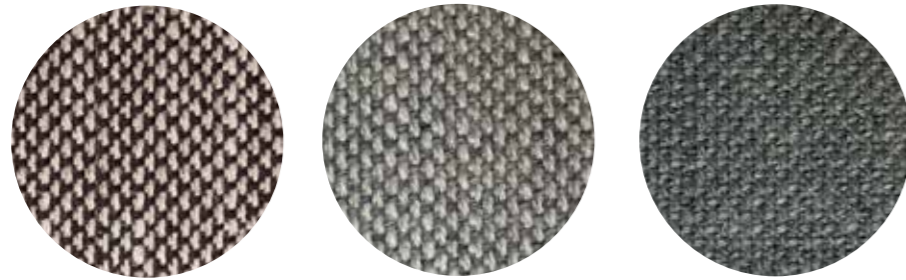
- **RUBBING FASTNESS / SOLIDITÀ ALLO SFREGAMENTO**
Dry and Wet 4-5, scale 1-5
(EN ISO 105-X12)
- **PILLING**
4, scale 1-5 (EN ISO 12945-2)
- **LIGHT FASTNESS / SOLIDITÀ ALLA LUCE**
5-7, scale 1-8 (EN ISO 105-B02)

- **FLAME RESISTANCE / RESISTENZA AL FUOCO**
BS EN 1021 1&2
BS EN 1021-1
BS 5852 Part 1 0, 1
UNI 9175 Classe 1 IM
US CA TB 117-2013

- **APPROVED / OMOLOGATO**



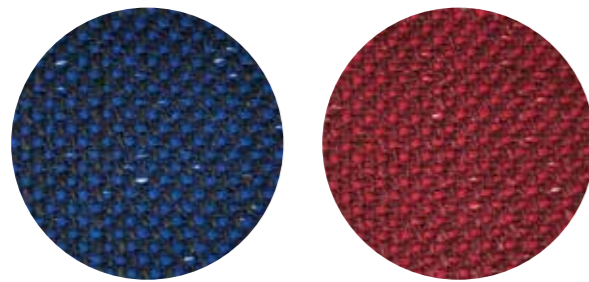
CATEGORY N / CATEGORIA N



N 05

N 01

N 02



N 03

N 04

technical specifications / specifiche tecniche



- COLLECTION / COLLEZIONE
kvadrat - SUNNIVA 2
DESIGNERS Raf Simons & Fanny Aronsen
- COMPOSITION / COMPOSIZIONE
58% New wool
25% Viscose
8% Linen
5% Polyamide
4% Polyester

- ABRASION / ABRASIONE
50.000 cycles, Martindale
(EN ISO 12947)
- PILLING
3, scale 1-5 (EN ISO 12945)
- LIGHT FASTNESS / SOLIDITÀ ALLA LUCE
5-7, scale 1-8 (ISO 105-B02)

- FLAME RESISTANCE / RESISTENZA AL FUOCO
AS/NZS 3837, class 2
BS 5852 Part 1
BS 5852 Crib 5 with treatment
DIN 4102 B2
EN 1021 - 1/2
NFPA 260
US CA TB 117-2013

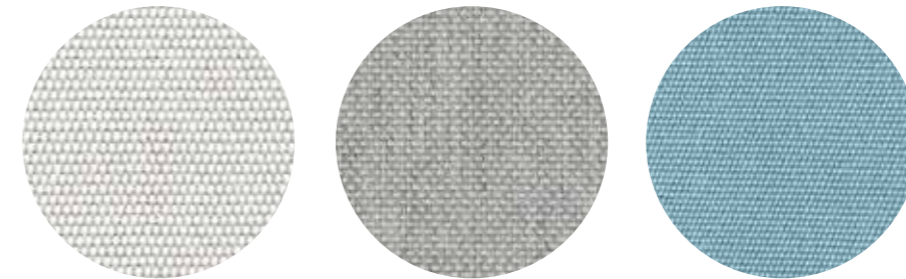
- APPROVED / OMOLOGATO



Outdoor



CATEGORY D / CATEGORIA D



D 37

D 38

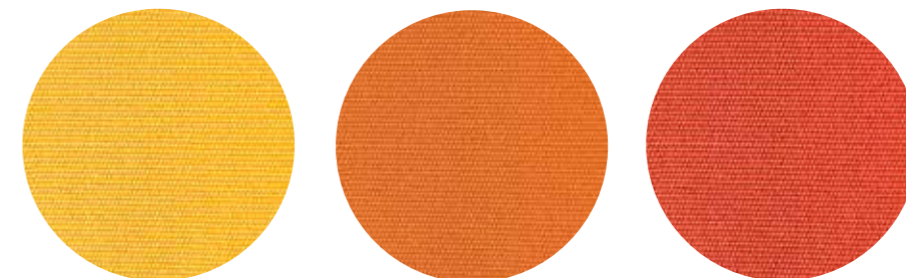
D 33



D 34

D 39

D 35



D 32

D 31

D 36

technical specifications / specifiche tecniche

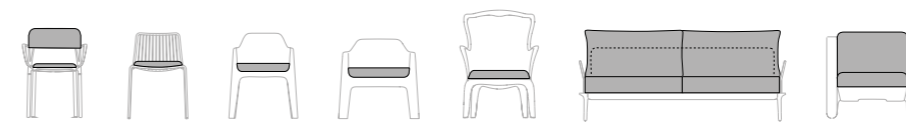


- COMPOSITION / COMPOSIZIONE
100% Acrylic teflon

- ABRASION / ABRASIONE
10.000 cycles, Martindale (EN ISO 12947)

- LIGHT FASTNESS / SOLIDITÀ ALLA LUCE
7-8, scale 1-8 (EN ISO 105-B02)

for cushions only for collections / solo per cuscino delle collezioni



Intrigo

Nolita

Plus

Plus Air

Pasha

Reva

Sunset

Only for Nolita cushions: rim available in colours D34, D35 and D36 / Solo per cuscino Nolita: disponibile con bordino in diversi colori D34 D35 e D36

Simil Leather

Finta Pelle

CATEGORY A / CATEGORIA A

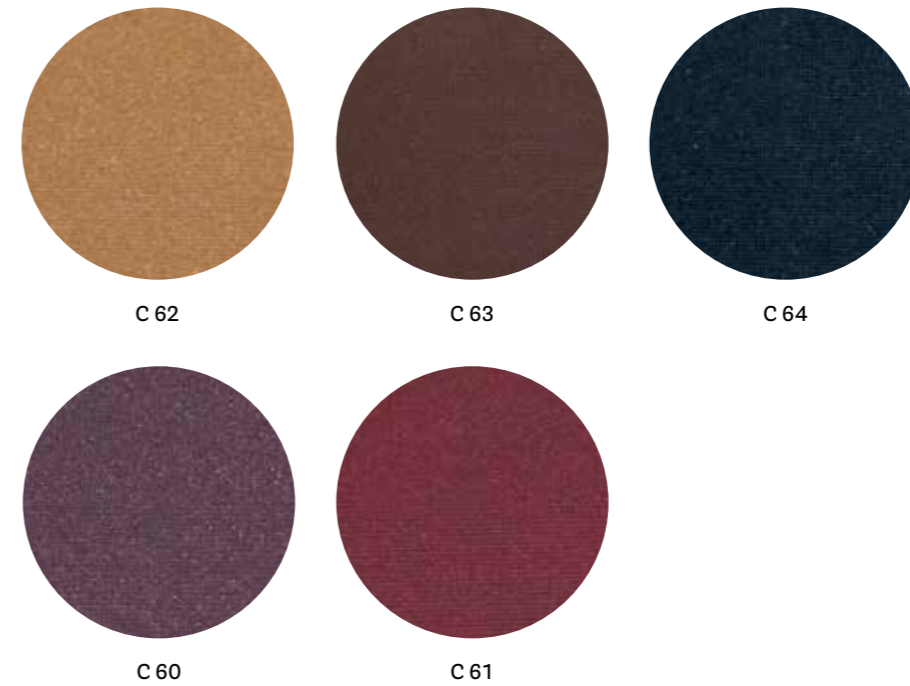


technical specifications / specifiche tecniche



- COMPOSITION / COMPOSIZIONE
85% PVC
15% Polyurethane
- ABRASION / ABRASIONE
50.000 cycles, Martindale
(UNI EN ISO 12947-2)
- RUBBING FASTNESS
SOLIDITÀ ALLO SFREGAMENTO
Dry and Wet 4-5, scale 1-5
(UNI EN ISO 105-X12)
- LIGHT FASTNESS
SOLIDITÀ ALLA LUCE
6, scale 1-8
(UNI EN ISO 105-B02)

CATEGORY C / CATEGORIA C



technical specifications / specifiche tecniche



- COMPOSITION / COMPOSIZIONE
72% PVC
25% Cotton
3% Polyurethane
- ABRASION / ABRASIONE
50.000 cycles, Martindale
(EN ISO 5470-2)
- RUBBING FASTNESS / SOLIDITÀ ALLO SFREGAMENTO
Dry and Wet 4-5, scale 1-5
(UNI EN ISO 105-X12)
- LIGHT FASTNESS / SOLIDITÀ ALLA LUCE
6, scale 1-8 (UNI EN ISO 105-B02)
- FLAME RESISTANCE / RESISTENZA AL FUOCO
BS 5852-1 Part 1
EN 1021-2
IMO RESOLUTION A.652 (16): 1989
UNI 9175 Classe 1 IM
US CA TB 117-2013

CATEGORY C / CATEGORIA C

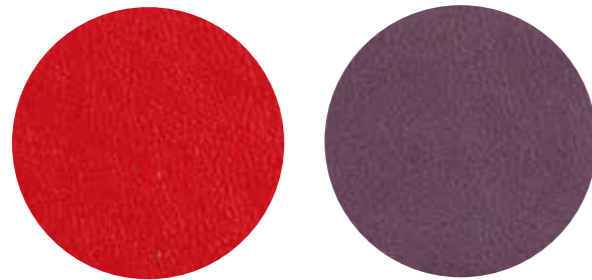


C 90

C 94

C 95

C 93



C 92

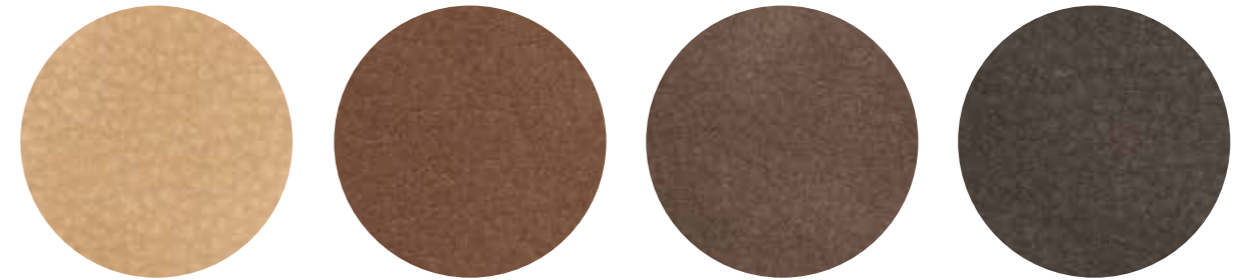
C 91

technical specifications / specifiche tecniche



- **COMPOSITION / COMPOSIZIONE**
72% PVC
25% Cotton
3% Polyurethane
- **ABRASION / ABRASIONE**
50.000 cycles, Martindale (EN ISO 5470-2)
- **RUBBING FASTNESS / SOLIDITÀ ALLO SFREGAMENTO**
Dry and Wet 4-5, scale 1-5 (UNI EN ISO 105-X12)
- **LIGHT FASTNESS / SOLIDITÀ ALLA LUCE**
6, scale 1-8 (UNI EN ISO 105-B02)
- **FLAME RESISTANCE / RESISTENZA AL FUOCO**
BS 5852-1 Part 1
EN 1021-2
IMO RESOLUTION A.652 (16): 1989
UNI 9175 Classe 1 IM
US CA TB 117-2013

CATEGORY C / CATEGORIA C



C 45

C 46

C 47

C 48

technical specifications / specifiche tecniche



- **COMPOSITION / COMPOSIZIONE**
80% PVC
18% PES
2% Polyurethane
- **ABRASION / ABRASIONE**
50.000 cycles, Martindale (EN ISO 5470-2)
- **RUBBING FASTNESS / SOLIDITÀ ALLO SFREGAMENTO**
Dry and Wet 4-5, scale 1-5 (UNI EN ISO 105-X12)
- **FLAME RESISTANCE / RESISTENZA AL FUOCO**
BS 5852 Part 1 0,1
EN 1021-1&2
UNI 9175 Classe 1 IM



technical specifications / specifiche tecniche



- COMPOSITION / COMPOSIZIONE
76% PVC
22% PES
2% Polyurethane
- ABRASION / ABRASIONE
60.000 cycles, Martindale
(ISO 5470-2)
- RUBBING FASTNESS / SOLIDITÀ ALLO SFREGAMENTO
Dry and Wet 4-5, scale 1-5
(ISO 105-X12)
- LIGHT FASTNESS / SOLIDITÀ ALLA LUCE
6, scale 1-8 (ISO 105-B02)
- FLAME RESISTANCE / RESISTENZA AL FUOCO
BS 5852-1 match test
EN 1021 Part 1-2
UNI 9175 Classe 1 IM
US CA TB 117-2013



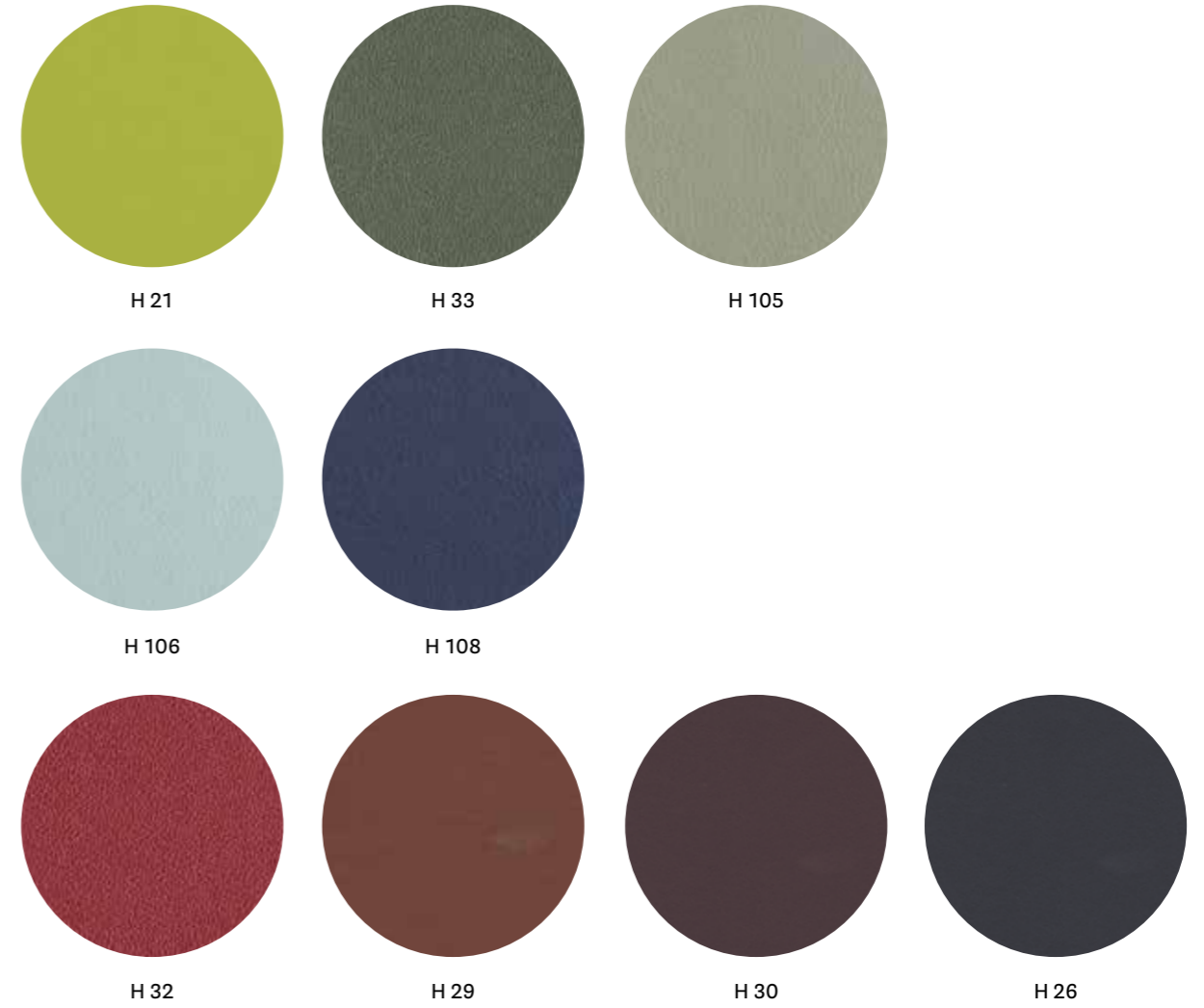
technical specifications / specifiche tecniche



- COMPOSITION / COMPOSIZIONE
85% PVC
15% Cotton
- ABRASION / ABRASIONE
150.000 cycles, Martindale
(ISO 5470-2)
- LIGHT FASTNESS / SOLIDITÀ ALLA LUCE
≥6, scale 1-8(EN ISO 105-B02)
- FLAME RESISTANCE / RESISTENZA AL FUOCO
B2 (DIN 4102)
BS 5852 Crib 5
EN 1021.1-2
EN 13501-1 - Cs3do
FAR 25853 App F Part 1
- IMO RESOLUTION A.652
NF D60-013 - AM 18
NFP 92503 M1
NY/NJ - Port Authority
UFAC Fabric Class 1
German fire standard B1 (except C12 and C22)
US CATB 117
US CATB 133

- APPROVED / OMOLOGATO





technical specifications / specifiche tecniche



- COMPOSITION / COMPOSIZIONE
63% Polyurethane
29% Cotton
8% PES
- ABRASION / ABRASIONE
150.000 cycles, Martindale
(UNI EN ISO 12947-2)

- LIGHT FASTNESS / SOLIDITÀ ALLA LUCE
5-6, scale 1-8 (UNI EN ISO 105-B02)
- FLAME RESISTANCE / RESISTENZA AL FUOCO
BS 5852 Crib 5
BS 5852 Part 1-2
EN 1021 Part 1-2
IMO resolution FTP Code 2010

IMO resolution A.652 (16):1989
UNI 9175 Classe 1 IM
US CA TB 117-2013

Leather Pelle

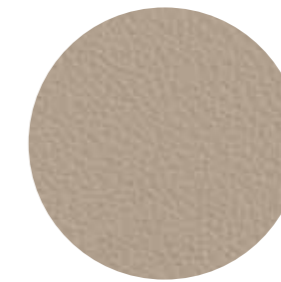
CATEGORY P / CATEGORIA P



PBI



PGC



PSA



PGA



PBE



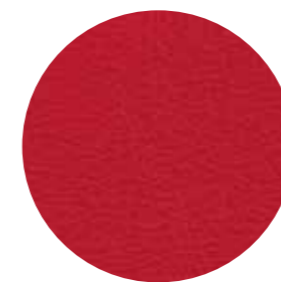
PGN



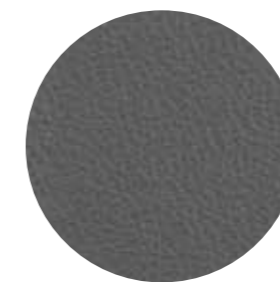
PTA



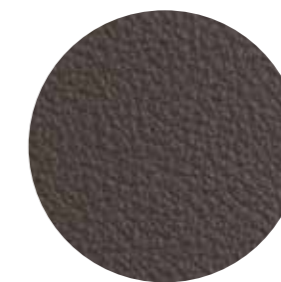
PTE



PRO



PGR



PMA



PNE

technical specifications / specifiche tecniche

• COLLECTION / COLLEZIONE



• COMPOSITION / COMPOSIZIONE

Mid grain leather
Pelle mezzo fiore

• RUBBING FASTNESS / SOLIDITÀ ALLO SFREGAMENTO Dry (500 Cycles) and Wet (250 Cycles) ≥ 4 (UNI EN ISO 11640:1998)

- LIGHT FASTNESS / SOLIDITÀ ALLA LUCE ≥ 5 (UNI EN ISO 105 B02) (MET.5)
- FLAME RESISTANCE / RESISTENZA AL FUOCO
BS 5852:1979
BS EN 1021-1-2:2006
IMO RES A652 (16)

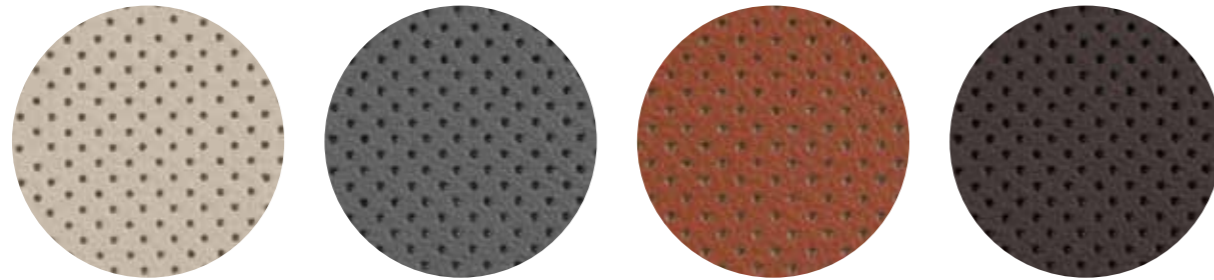
cleaning / lavaggio

Clean with a damp cloth using water. Do not use detergents, solvents, bleached, abrasives. Pulire con un panno umido d'acqua. Non usare detersivi, solventi, candeggianti, abrasivi.

• APPROVED / OMOLOGATO



CATEGORY P / CATEGORIA P



PGCF

PGRF

PTEF

PMAF

technical specifications / specifiche tecniche

• COLLECTION / COLLEZIONE



• COMPOSITION / COMPOSIZIONE

Perforated mid grain leather
Pelle mezzo fiore traforata

• RUBBING FASTNESS / SOLIDITÀ ALLO SFREGAMENTO

Dry (500 Cycles) and Wet (250 Cycles) ≥4
(UNI EN ISO 11640:1998)

• LIGHT FASTNESS / SOLIDITÀ ALLA LUCE

≥5 (UNI EN ISO 105 B02) (MET.5)

• FLAME RESISTANCE / RESISTENZA AL FUOCO

BS 5852:1979
BS EN 1021-1-2:2006
IMO RES A652 (16)

cleaning / lavaggio

Clean with a damp cloth using water. Do not use detergents, solvents, bleached, abrasives.

Pulire con un panno umido d'acqua. Non usare detersivi, solventi, candeggianti, abrasivi.

• APPROVED / OMOLOGATO



only for collection / solo per collezioni

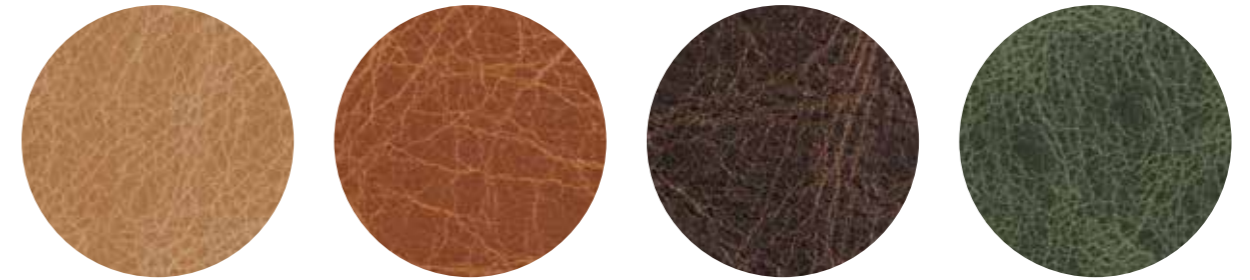


Inner part of the back, upper part of the seat.

Lato interno dello schienale e parte superiore del sedile.

Vic / Vic Metal

CATEGORY P / CATEGORIA P



PBS

PCO

PMS

PVE

technical specifications / specifiche tecniche

• COLLECTION / COLLEZIONE



• COMPOSITION / COMPOSIZIONE

Vintage mid grain leather
Pelle mezzo fiore anticata

• RUBBING FASTNESS / SOLIDITÀ ALLO SFREGAMENTO

Dry (50 Cycles) and Wet (20 Cycles) ≥3
(EN ISO 11640:1998)

• LIGHT FASTNESS / SOLIDITÀ ALLA LUCE

≥2/3 (EN ISO 105-B02) (MET.5)

• FLAME RESISTANCE / RESISTENZA AL FUOCO

BS 5852:1979
BS EN 1021-1-2:2006

cleaning / lavaggio

Clean with warm and damp cloth. Do not use detergents, solvents, bleached, abrasives.

Pulire con acqua calda e un panno umido. Non usare detersivi, solventi, candeggianti, abrasivi.

only for collections / solo per collezioni



Malmö

Inga

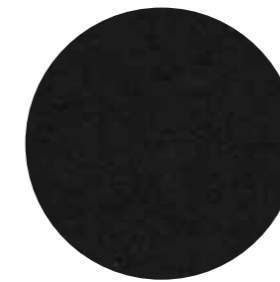
Hard leather

Cuoio

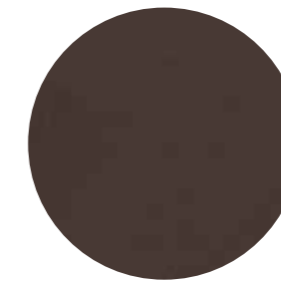
CATEGORY F / CATEGORIA F



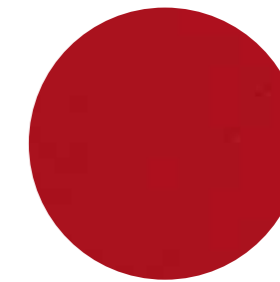
F 07



F 05



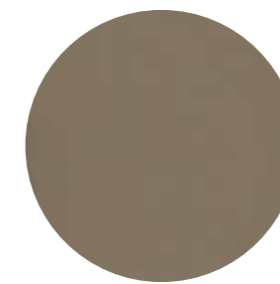
F 01



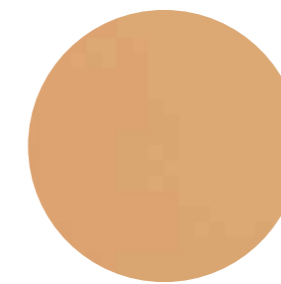
F 06



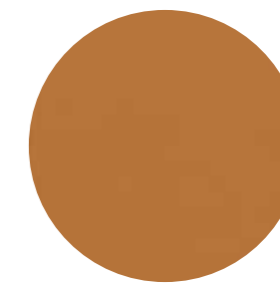
F 09



F 08



F 03



F 04

technical specifications / specifiche tecniche

- **COMPOSITION / COMPOSIZIONE**
Genuine leather, tanned with vegetable substances.
Cuoio naturale, conciato con sostanze vegetali.

- **RUBBING FASTNESS / SOLIDITÀ ALLO SFREGAMENTO**
Satisfactory up to maximum 700 abrasions in humid environment and 1000 abrasions in dry environment.
Soddisfacente sino a max 700 abrasioni all'umido e 1000 abrasioni al secco.

cleaning / lavaggio

Clean with a damp cloth using water.
Pulire con un panno umido d'acqua.

only for collections / solo per collezioni



Fox



Gliss



Inga



Kuadra



Kuadra XL



Malmö



Mood



Woody

CATEGORY F / CATEGORIA F



F 18



F 11



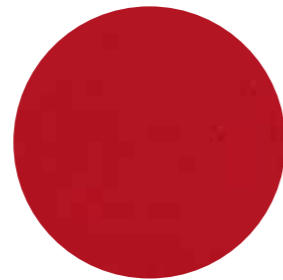
F 12



F 19



F 13



F 17

technical specifications / specifiche tecniche

- **COMPOSITION / COMPOSIZIONE**
Regenerated hide leather.
Tanned leather cuttings and shavings linked with natural rubber lattelx.
Cuoio rigenerato. Ritagli e rasatura di cuoio conciato legati con lattice di gomma naturale.

- **ABRASION / ABRASIONE**
Dry and wet >1000 (UNI EN ISO 7724)
- **LIGHT FASTNESS / SOLIDITÀ ALLA LUCE**
4-5 Xenotest Method
- **FLAME RESISTANCE / RESISTENZA AL FUOCO**
BS EN 1021 1&2
BS 5852 Part 1
US CA TB 117 E Part 1

cleaning / lavaggio

Clean with a damp cloth using water.
Pulire con un panno umido d'acqua.

only for collections / solo per collezioni



Inga

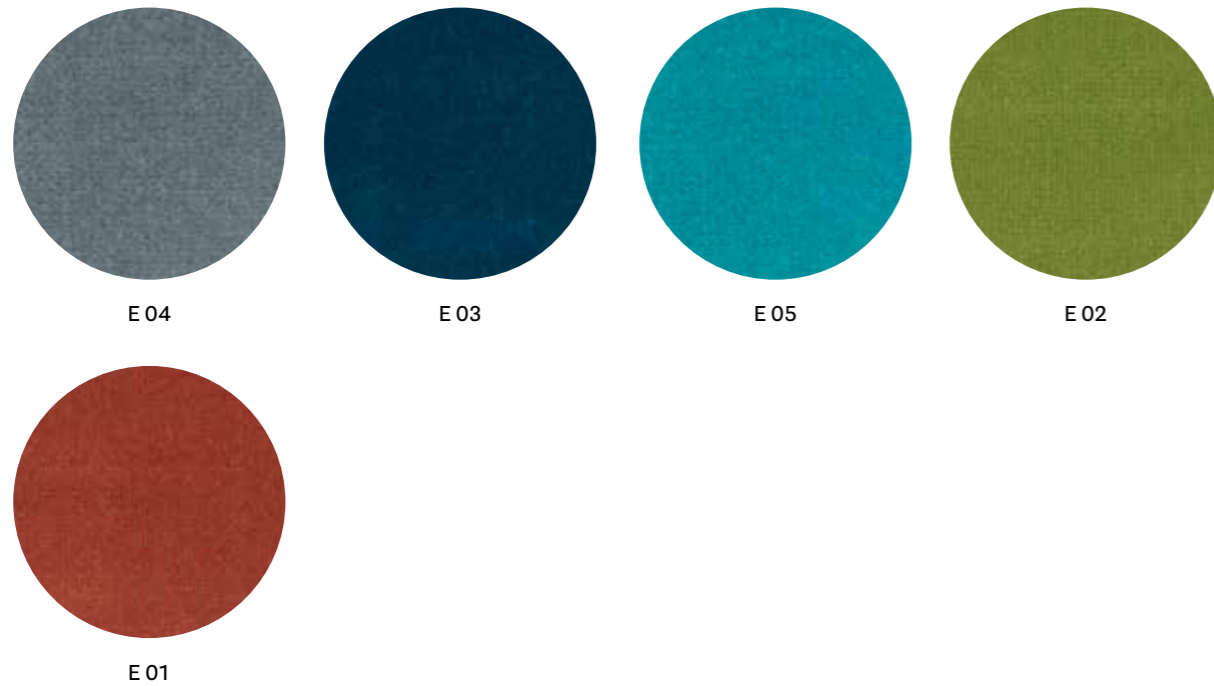
Kuadra

Kuadra XL

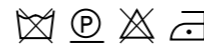
Velvet

Velluto

CATEGORY E / CATEGORIA E



technical specifications / specifiche tecniche



- COLLECTION / COLLEZIONE
DEDAR
ADAMO & EVA
- COMPOSITION / COMPOSIZIONE
100% Cotton
- ABRASION / ABRASIONE
50.000 cycles, Martindale (ISO 12947-2)
- RUBBING FASTNESS / SOLIDITÀ ALLO SFREGAMENTO
Dry 4-5 and Wet 3-5, scale 1-5 (ISO 105-X12)
- LIGHT FASTNESS / SOLIDITÀ ALLA LUCE
4-6, scale 1-8 (ISO 105-B02)

CATEGORY G / CATEGORIA G



technical specifications / specifiche tecniche

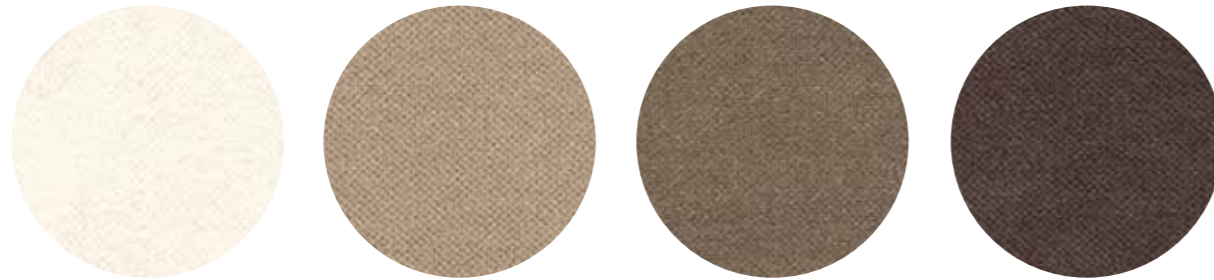


- COLLECTION / COLLEZIONE
kvadrat - STILL
DESIGNER Georgina Wright
- COMPOSITION / COMPOSIZIONE
100% TREVIRA CS®
- ABRASION / ABRASIONE
50.000 cycles, Martindale (EN ISO 12947)
- RUBBING FASTNESS / SOLIDITÀ ALLO SFREGAMENTO
Dry and Wet 4-5, scale 1-5 (EN ISO 105-X12)
- PILLING
4-5, scale 1-5 (EN ISO 12945)
- LIGHT FASTNESS / SOLIDITÀ ALLA LUCE
5-7, scale 1-8 (ISO 105-B02:2014)
- SOUND ABSORPTION / ASSORBIMENTO ACUSTICO
folded: $\alpha_w = 0.85$ Class B (ISO 11654)
- FLAME RESISTANCE / RESISTENZA AL FUOCO
BS 5852 Crib 5
BS 5852 Part 1
BS 5867 Part 2 type B
DIN 4102 B1
- EN 1021-1/2
IMO FTP Code 2010:Part 8
NF D60-013
NF P92 57 M1
ÖNORM B1/Q1
SN 198 898 5.2
UNI 9175 Classe 1 IM
US CA TB 117-2013

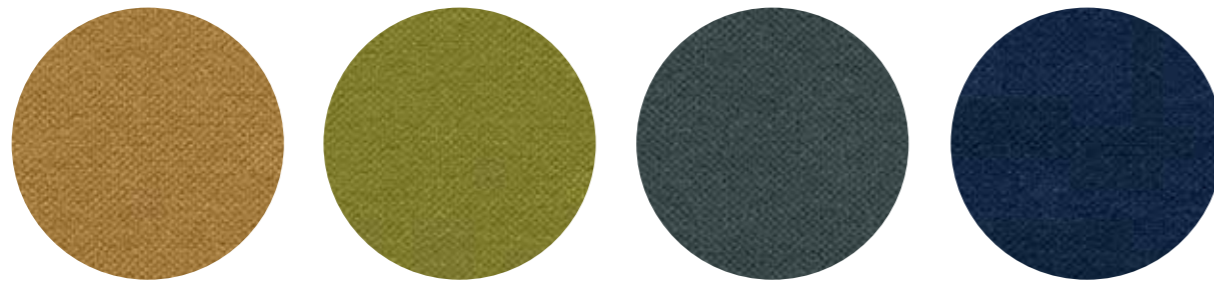
- APPROVED / OMOLOGATO



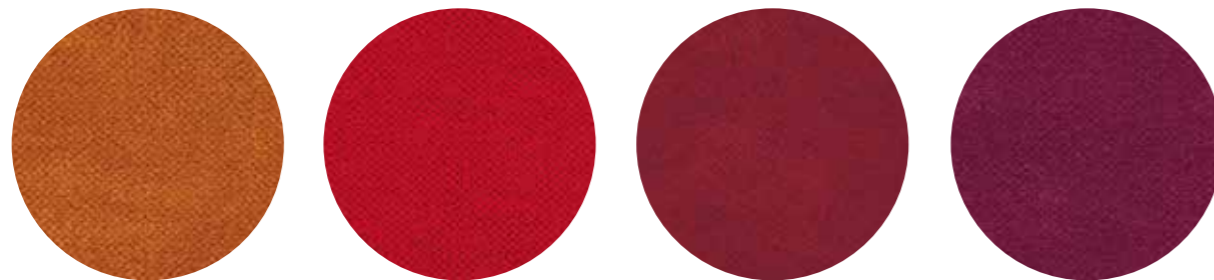
CATEGORY H / CATEGORIA H



H 40 H 44 H 45 H 46



H 43 H 49 H 51 H 50



H 48 H 53 H 42 H 47



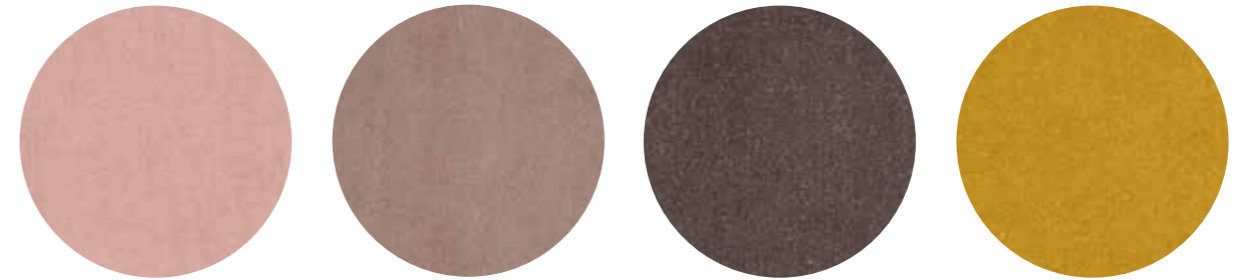
H 41

technical specifications / specifiche tecniche

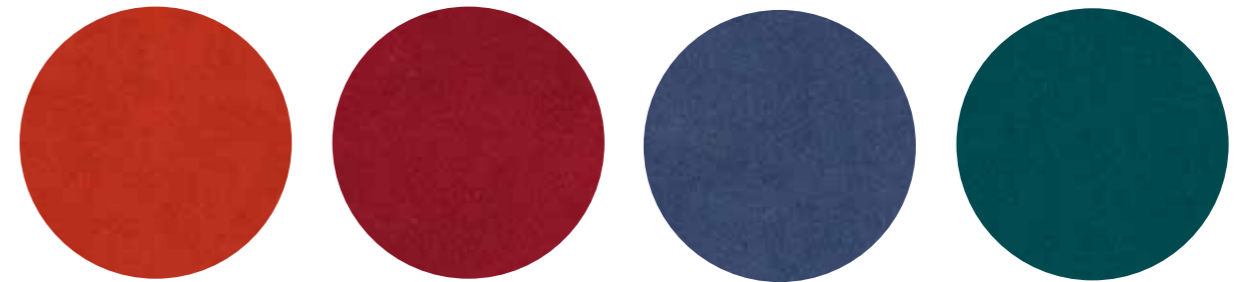


- COMPOSITION / COMPOSIZIONE
100% TREVIRA CS®
- ABRASION / ABRASIONE
190.000 cycles, Martindale (EN ISO 12947-2)
- RUBBING FASTNESS / SOLIDITÀ ALLO SFREGAMENTO
Dry and Wet 4-5, scale 1-5 (EN ISO 105-X12)
- PILLING
5, scale 1-5 (EN ISO 12945-2)
- LIGHT FASTNESS / SOLIDITÀ ALLA LUCE
5, scale 1-8 (EN ISO 105-B02)
- SOUND ABSORPTION / ASSORBIMENTO ACUSTICO
folded: $\alpha_w = 0.70$ (EN ISO 354:2003)
- FLAME RESISTANCE / RESISTENZA AL FUOCO
BS 5852 Part 0,1
DIN 4102 B1
EN 1021-1&2
IMO MSC 307(88) Annex 1 Part 7-8
NF P 92-503-507 M1
NFPA 260:2019
UNI 9177 Classe 1
UNI 9175 Classe 1 IM
US CA TB 117-2013

CATEGORY N / CATEGORIA N



N 20 N 21 N 22 N 23



N 24 N 25 N 26 N 27

technical specifications / specifiche tecniche



- COLLECTION / COLLEZIONE
kvadrat-SAHCO
BALBOA
DESIGNER Najberg
- COMPOSITION / COMPOSIZIONE
100% Polyester FR
- ABRASION / ABRASIONE
100.000 cycles, Martindale (EN ISO 12947)
- PILLING
4, scale 1-5 (EN ISO 12945-2)
- LIGHT FASTNESS / SOLIDITÀ ALLA LUCE
4-6, scale 1-8 (EN ISO 105-B02)
- SOUND ABSORPTION / ASSORBIMENTO ACUSTICO
folded: $\alpha_w = 0.80$ Class B (ISO 11654)
- FLAME RESISTANCE / RESISTENZA AL FUOCO
BS 5852 Crib 5
BS 5867 Part 2 Type B
EN 1021-1/2
EN 13501, B-s1, d0
IMO FTP Code 2010: Part 8
ÖNORM B1/Q1
SN 198 898 5.2
UNI 9175 Classe 1 IM
US CA TB 117-2013

APPROVED / OMOLOGATO



Powder coated cast-iron, steel and aluminium

Ghisa, acciaio e
alluminio verniciati

Indoor

TEXTURED MATT / GOFFRATA OPACA



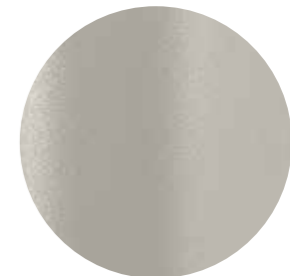
B1100
White / Bianco



B1200
White / Bianco



BE100
Beige / Beige



BE200
Beige / Beige



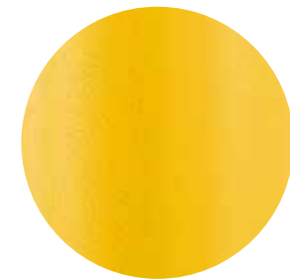
SA100
Sand / Sabbia



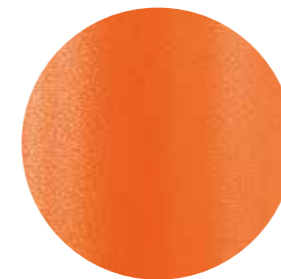
SA200
Sand / Sabbia



RA100
Pink / Rosa



GI100
Yellow / Giallo



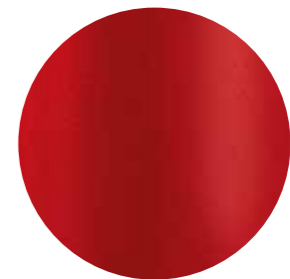
AR200
Orange / Arancio



AR400
Orange / Arancio



AR500
Orange / Arancio



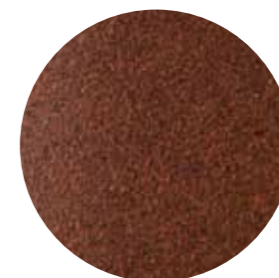
RO200
Red / Rosso



RO400
Red / Rosso



TE
Terracotta / Terracotta

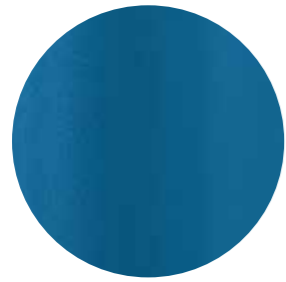


RU
Rust / Ruggine

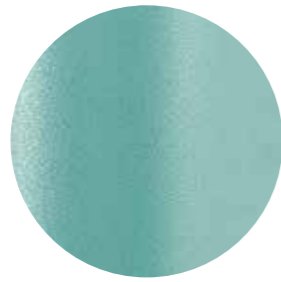


MG
Brown / Marrone

TEXTURED MATT / GOFFRATA OPACA



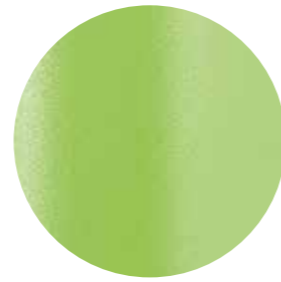
BL300
Blue / Blu



AZ100
Light blue / Azzurro



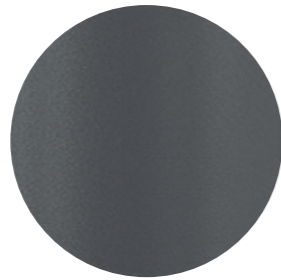
VE100
Sage green / Verde salvia



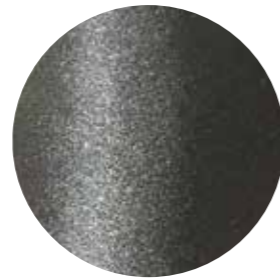
VE400
Green / Verde



AG
Aluminium / Alluminio



GA
Anthracite grey / Grigio antracite

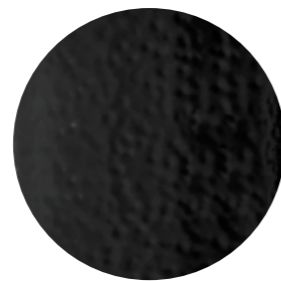


GN
Natural grey / Grigio naturale

HAMMERED GLOSSY / BUCCIATA LUCIDA



SA300
Sand / Sabbia



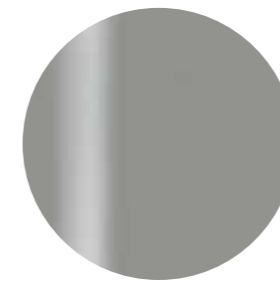
_NERO
Black / Nero

HAMMERED MATT / BUCCIATA OPACA

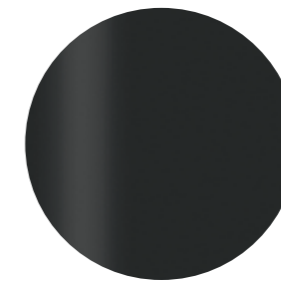
SMOOTH MATT / LISCIA OPACA



BI300
White / Bianco



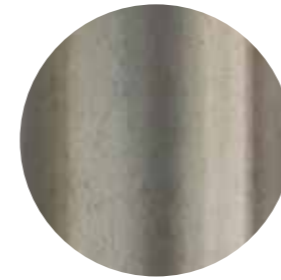
9007
Aluminium / Alluminio



NEF
Black / Nero
Soft touch

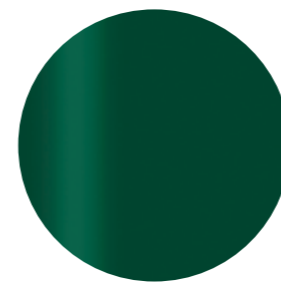


VE300
Forest green / Verde bosco
Soft touch

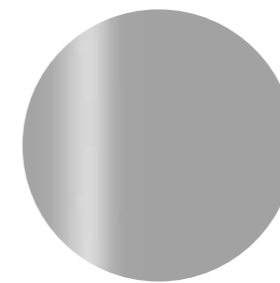


TR
Transparent / Trasparente

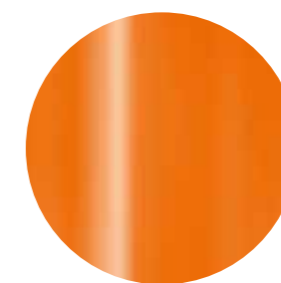
SMOOTH GLOSSY / LISCIA LUCIDA



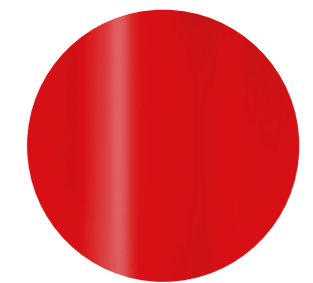
6005
Green / Verde



AL
Aluminium / Alluminio



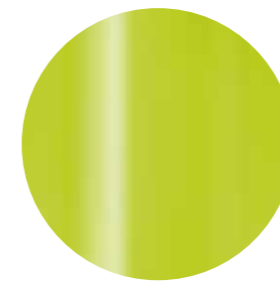
AR300
Orange / Arancio



RO100
Red / Rosso



BI400
White / Bianco



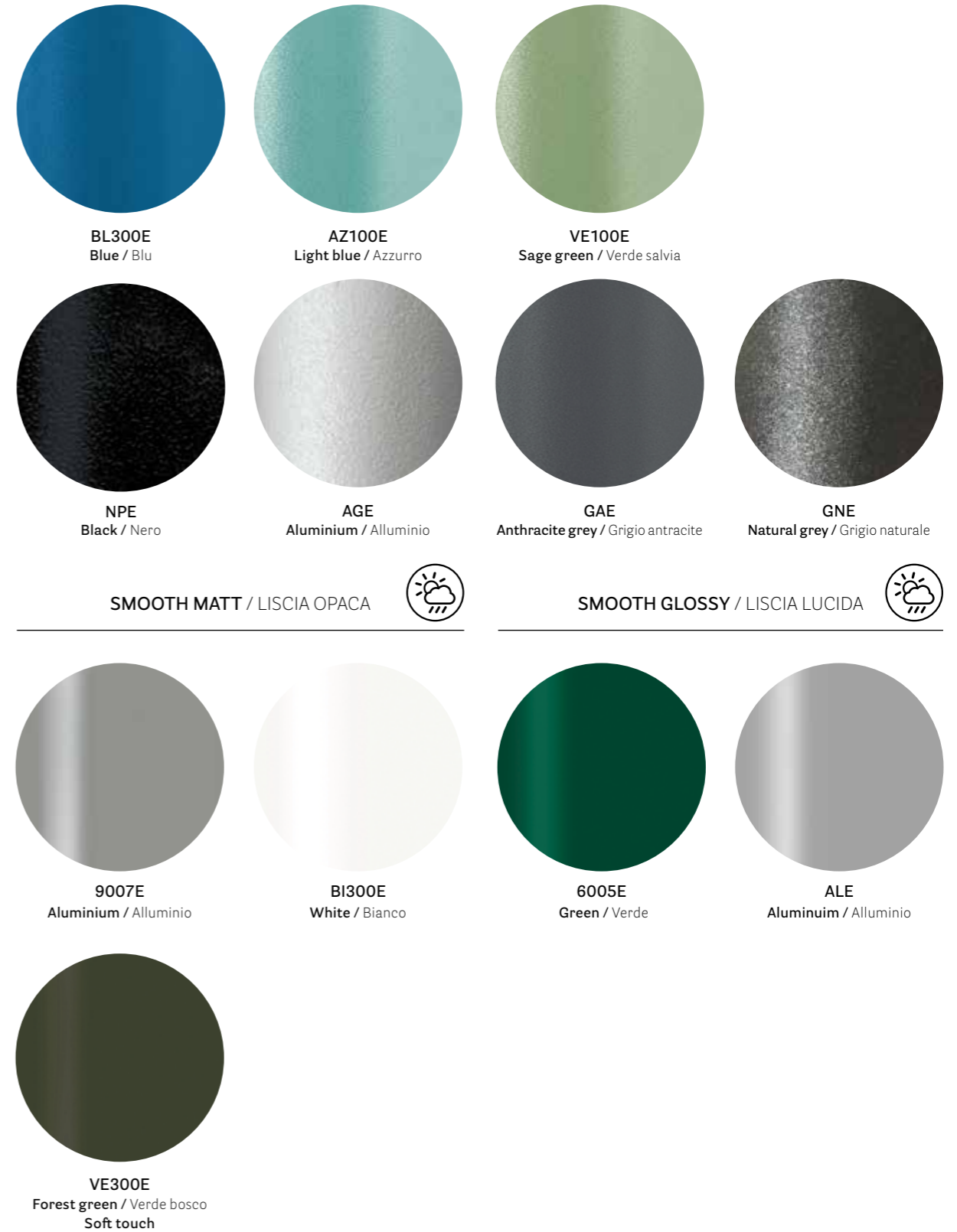
VE200
Green / Verde

Outdoor

TEXTURED MATT / GOFFRATA OPACA



TEXTURED MATT / GOFFRATA OPACA



SMOOTH MATT / LISCIA OPACA



SMOOTH GLOSSY / LISCIA LUCIDA

