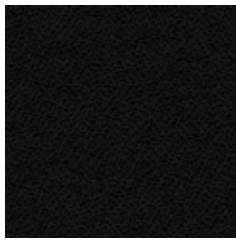


C1 – BOND



9



6098



169



204



8078



109



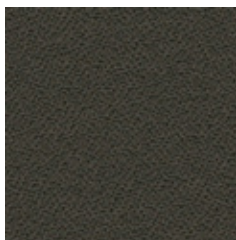
79



76



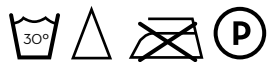
77



5518



81



WIDHT/ ANCHO/ LARGEUR: 140cm
WEIHT/ PESO/ POID: 240gr/m2

Composition:

100% polyolefin.

Light fastness:

6 - 7, EN ISO 105-B02.

Abrasion:

40.000 Martindale EN ISO 12947-2.

Resistance to pilling:

4 - 5, EN ISO 12945-2.

Dye fastness to rubbing:

Wet 4 - 5. Dry 4 - 5, EN ISO 105x12.

Flammability:

UNE EN ISO 1021-1 • BS 5852 • DIN 66084
classification P-c • CAL TB 117 section E, part
1 • NFPA 260 cover fabric class 1.

*Batch to catch variations may occur within commercial tolerances.

Composición:

100% poliolefina.

Solidez a la luz:

6 - 7, EN ISO 105-B02.

Abrasión:

40.000 Martindale EN ISO 12947-2.

R. a la formación de pilling:

4 - 5, EN ISO 12945-2.

Solidez de las tinturas al frote:

Seco 4 - 5. Mojado 4 - 5, EN ISO 105x12.

Inflamabilidad:

UNE EN ISO 1021-1 • BS 5852 • DIN 66084
classification P-c • CAL TB 117 section E, part
1 • NFPA 260 cover fabric class 1.

*De tintada a tintada se pueden producir variaciones tolerables de color.

Composition:

100% polyoléfine.

Solidité à la lumière:

6 - 7, EN ISO 105-B02.

Abrasion:

40.000 Martindale EN ISO 12947-2.

Résistance au pilling:

4 - 5, EN ISO 12945-2.

Résistance au frottement:

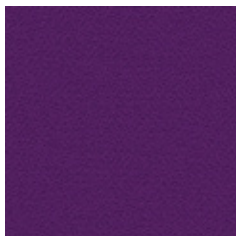
Sec 4 - 5. Humide 4 - 5, EN ISO 105x12.

Inflamabilité:

UNE EN ISO 1021-1 • BS 5852 • DIN 66084
classification P-c • CAL TB 117 section E, part
1 • NFPA 260 cover fabric class 1.

*Des variations tolérables de coloris d'un bain à un autre peuvent se manifester.

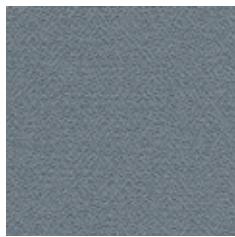
C1 – DUO



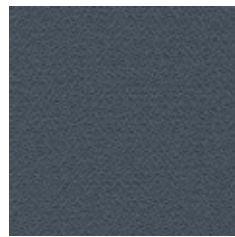
760



229



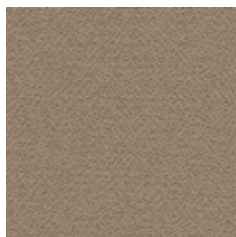
220



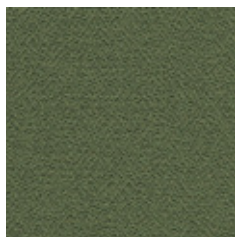
600



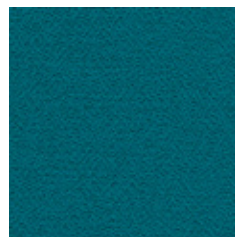
840



450



533



429



WIDHT/ ANCHO/ LARGEUR: 140cm
WEIHT/ PESO/ POID: 300gr/m²

Composition:

100% polyolefin.

Light fastness:

6 - 7, EN ISO 105-B02.

Abrasion:

40.000 Martindale EN ISO 12947-2.

Resistance to pilling:

4 - 5, EN ISO 12945-2.

Dye fastness to rubbing:

Wet 4 - 5. Dry 4 - 5, EN ISO 105x12.

Flammability:

UNE EN ISO 1021-1 • BS 5852 • DIN 66084
classification P-c • CAL TB 117 section E, part
1 • NFPA 260 cover fabric class 1.

*Batch to catch variations may occur within commercial tolerances.

Composición:

100% poliolefina.

Solidez a la luz:

6 - 7, EN ISO 105-B02.

Abrasión:

40.000 Martindale EN ISO 12947-2.

R. a la formación de pilling:

4 - 5, EN ISO 12945-2.

Solidez de las tinturas al frote:

Seco 4 - 5. Mojado 4 - 5, EN ISO 105x12.

Inflamabilidad:

UNE EN ISO 1021-1 • BS 5852 • DIN 66084
classification P-c • CAL TB 117 section E, part
1 • NFPA 260 cover fabric class 1.

*De tintada a tintada se pueden producir variaciones tolerables de color.

Composition:

100% polyoléfine.

Solidité à la lumière:

6 - 7, EN ISO 105-B02.

Abrasion:

40.000 Martindale EN ISO 12947-2.

Résistance au pilling:

4 - 5, EN ISO 12945-2.

Résistance au frottement:

Sec 4 - 5. Humide 4 - 5, EN ISO 105x12.

Inflamabilité:

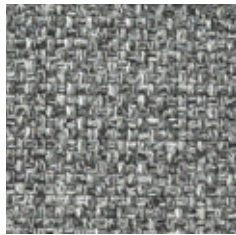
UNE EN ISO 1021-1 • BS 5852 • DIN 66084
classification P-c • CAL TB 117 section E, part
1 • NFPA 260 cover fabric class 1.

*Des variations tolérables de coloris d'un bain à un autre peuvent se manifester.

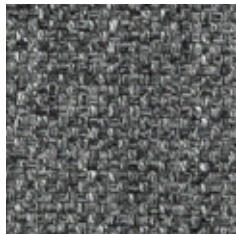
C2 – ADDO



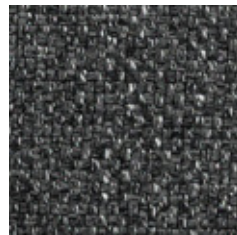
4



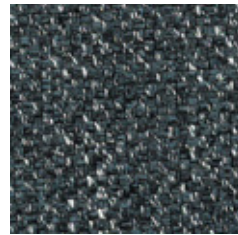
3



30



1



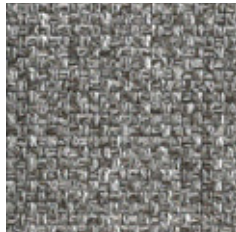
11



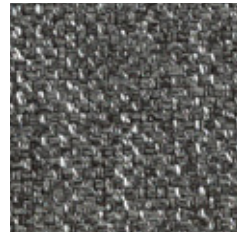
5



6



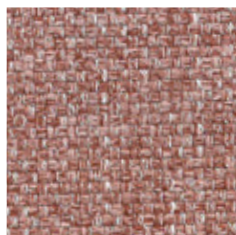
7



8



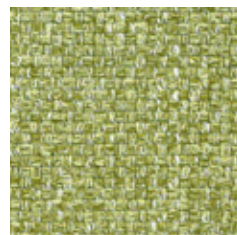
16



10



15



14



12



WIDHT/ ANCHO/ LARGEUR: 140cm
WEIHT/ PESO/ POID: 365gr/m2.

Composition:

85% polyester, 15% cotton.

Lightfastness:

4 - 5, UNE 40187, BS 1006-Bo2.

Abrasion:

30.000 Martindale ISO 12947-2 1998.

Resistance to pilling:

4 - 5, ISO/DIS 12945-2.

Rubbing fastness in humid state: 4 - 5, ISO 105-Co6, UNE 40029.

Rubbing solvents:

4 - 5, ISO 105-Do1, UNE 40099.

Seam strength:

Warp 4mm, BS 3320:1988, ISO 13936-2.

Weft 4mm, BS 2543:1995, ISO 13936-2.

Tear strength:

Warp exceed 215N, EN ISO 13937-3.

Weft exceed 176N, EN ISO 13937-3.

*Batch to catch variations may occur within commercial tolerances.

Composición:

85% poliéster, 15% algodón.

Solidez a la luz:

4 - 5, UNE 40187, BS 1006-Bo2.

Abrasión:

30.000 Martindale ISO 12947-2 1998.

Resistencia a la formación de pilling:

4 - 5, ISO/DIS 12945-2.

Solidez de los colores al lavado:

4 - 5, ISO 105-Co6, UNE 40029.

Solidez a la limpieza en seco:

4 - 5, ISO 105-Do1, UNE 40099.

Resistencia de las costuras:

Urdimbre 4mm, BS 3320:1988, ISO 13936-2.

Trama 4mm, BS 2543:1995, ISO 13936-2.

Resistencia de rotura al rasgado:

Urdimbre exceed 215N, EN ISO 13937-3.

Trama exceed 176N, EN ISO 13937-3.

*De tintada a tintada se pueden producir variaciones tolerables de color.

Composition:

85% polyester, 15% cotton.

Solidité à la lumière:

4 - 5, UNE 40187, BS 1006-Bo2.

Abrasion:

30.000 Martindale ISO 12947-2 1998.

Résistance au pilling:

4 - 5, ISO/DIS 12945-2.

Résistance au nettoyage:

4 - 5, ISO 105-Co6, UNE 40029.

Résistance au nettoyage à sec: 4 - 5, ISO 105-Do1, UNE 40099.

Seam strength:

Chaîne 4mm, BS 3320:1988, ISO 13936-2.

Trame 4mm, BS 2543:1995, ISO 13936-2.

Résistance à la déchirure:

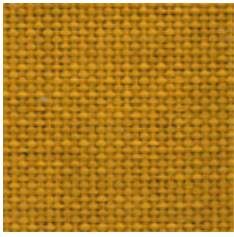
Chaîne exceed 215N, EN ISO 13937-3.

Trame exceed 176N, EN ISO 13937-3.

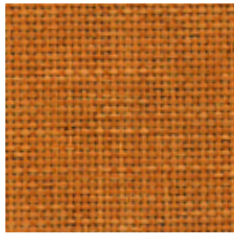
*Des variations tolérables de coloris d'un bain à un autre peuvent se manifester.



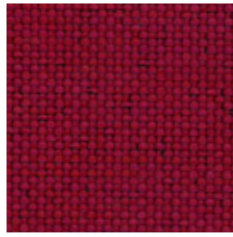
C2 – SOL/OBI



SOL 11



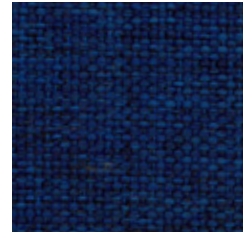
SOL 12



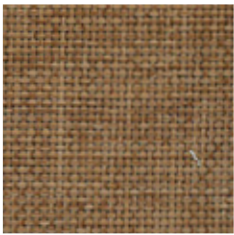
SOL 15



SOL 16



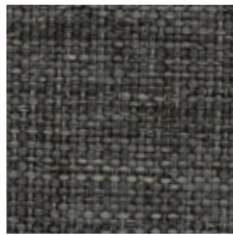
SOL 17



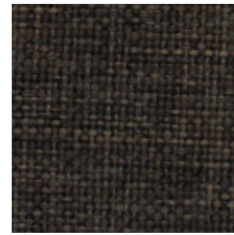
SOL 7



SOL 8



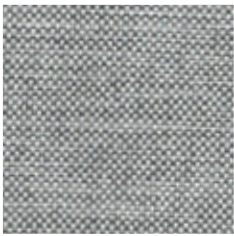
SOL 9



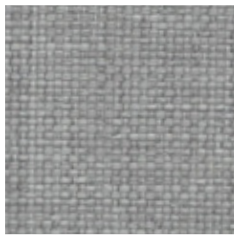
SOL 10



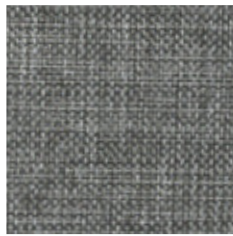
SOL 1



OBI 6



SOL 3



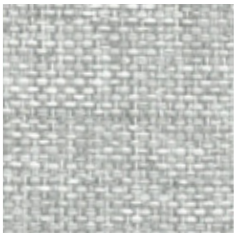
OBI 13



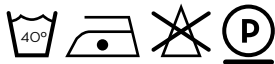
OBI 19



SOL 2



SOL 4



WIDHT/ ANCHO/ LARGEUR: 140cm
WEIHT/ PESO/ POID: Sol 380gr/m². Obi 248gr/m²

Composition:

Sol 100% polyester.

Obi 100% polypropylene.

Lightfastness:

Sol 5. Obi 6,5. UNE 40187, BS 1006-Bo2.

Abrasion:

Sol 36.000 Martindale.

Obi 20.000 Martindale.

BS 5690, BS 2543:1995.

Resistance to pilling:

Sol 4 - 5. Obi 5. ISO/DIS 12945-2.

Rubbing fastness in humid state:

Sol 5. Obi 4 - 5. ISO 105-Co6, UNE 40029.

Rubbing solvents:

Sol 5. Obi 4 - 5. ISO 105-Do1, UNE 40099.

Seam strength:

Warp Sol 3,6mm. Obi 4mm. BS 3320:1988.

Weft Sol 3,4mm. Obi 2mm. BS 2543:1995.

Composición:

Sol 100% poliéster.

Obi 100% polipropileno.

Solidez a la luz:

Sol 5. Obi 6,5. UNE 40187, BS 1006-Bo2.

Abrasión:

Sol 36.000 Martindale.

Obi 20.000 Martindale.

BS 5690, BS 2543:1995.

Resistencia a la formación de pilling:

Sol 4 - 5. Obi 5. ISO/DIS 12945-2.

Solidez de los colores al lavado:

Sol 5. Obi 4 - 5. ISO 105-Co6, UNE 40029.

Solidez a la limpieza en seco:

Sol 5. Obi 4 - 5. ISO 105-Do1, UNE 40099.

Resistencia de las costuras:

Urdimbre Sol 3,6mm. Obi 4mm. BS 3320:1988.

Trama Sol 3,4mm. Obi 2mm. BS 2543:1995.

Composition:

Sol 100% polyester.

Obi 100% polypropylène

Solidité à la lumière:

Sol 5. Obi 6,5. UNE 40187, BS 1006-Bo2.

Abrasion:

Sol 36.000 Martindale

Obi 20.000 Martindale.

BS 5690, BS 2543:1995.

Résistance au pilling:

Sol 4 - 5. Obi 5. ISO/DIS 12945-2.

Résistance au nettoyage:

Sol 5. Obi 4 - 5. ISO 105-Co6, UNE 40029.

Résistance au nettoyage à sec:

Sol 5. Obi 4 - 5. ISO 105-Do1, UNE 40099.

Seam strength:

Chaîne Sol 3,6mm. Obi 4mm. BS 3320:1988.

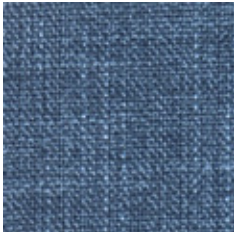
Trame Sol 3,4mm. Obi 2mm. BS 2543:1995.

*Batch to catch variations may occur within commercial tolerances.

*De tintada a tintada se pueden producir variaciones tolerables de color.

*Des variations tolérables de coloris d'un bain à un autre peuvent se manifester.

C2 – STEVE/WEST



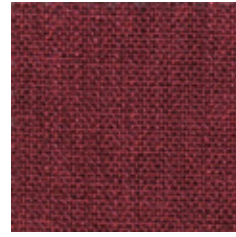
WEST 16



WEST 1



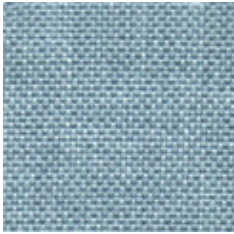
WEST 12



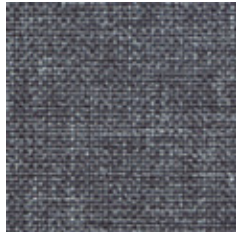
WEST 14



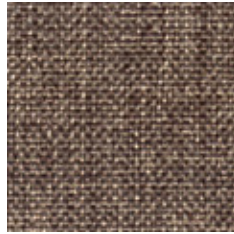
WEST 19



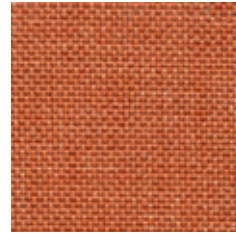
STEVE 27



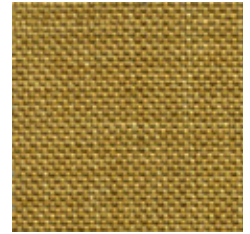
STEVE 18



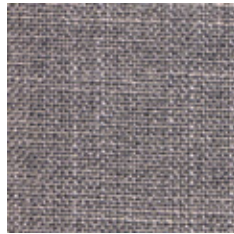
STEVE 13



STEVE 24



STEVE 23



WEST 4



WEST 7



WIDHT/ ANCHO/ LARGEUR: 140cm

WEIHT/ PESO/ POID: Steve 215gr/m2. West 248gr/m2

Composition:

Steve 100% polyester.

West 75% polyester, 30% cotton.

Light fastness:

5, EN ISO 105-Bo2.

Abrasion:

Steve 25.000 Martindale EN ISO 12947-2.

West 40.000 Martindale EN ISO 12947-2.

Resistance to pilling:

4 - 5, EN ISO 12945-2.

Dye fastness to rubbing:

Steve Wet 4 - 5. Dry 4 - 5, EN ISO 105x12.

West Wet 5. Dry 5, EN ISO 105x12.

Environnement:

Oeko-Tex.

*Batch to catch variations may occur within commercial tolerances.

Composición:

Steve 100% poliéster.

West 75% poliéster, 30% algodón.

Solidez a la luz:

5, EN ISO 105-Bo2.

Abrasión:

Steve 25.000 Martindale EN ISO 12947-2.

West 40.000 Martindale EN ISO 12947-2.

R. a la formación de pilling:

4 - 5, EN ISO 12945-2.

Solidez de las tinturas al frote:

Steve Seco 4 - 5. Mojado 4 - 5, EN ISO 105x12.

West Seco 5. Mojado 5, EN ISO 105x12.

Medio ambiente:

Oeko-Tex.

*De tintada a tintada se pueden producir variaciones tolerables de color.

Composición:

Steve 100% polyester.

West 75% polyester, 30% cotton.

Solidité à la lumière:

5, EN ISO 105-Bo2.

Abrasion:

Steve 25.000 Martindale EN ISO 12947-2.

West 40.000 Martindale EN ISO 12947-2.

Résistance au pilling:

4 - 5, EN ISO 12945-2.

Résistance au frottement:

Steve Sec 4 - 5. Humide 4 - 5, EN ISO 105x12.

West Sec 5. Humide 5, EN ISO 105x12.

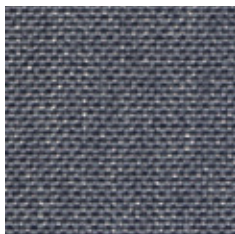
Environnement:

Oeko-Tex.

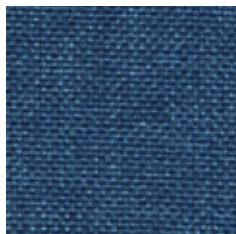
*Des variations tolérables de coloris d'un bain à un autre peuvent se manifester.



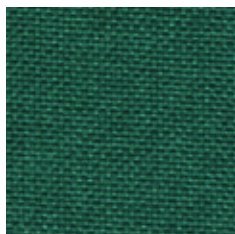
C2 – PIXEL



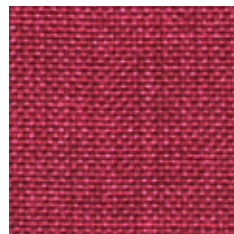
29



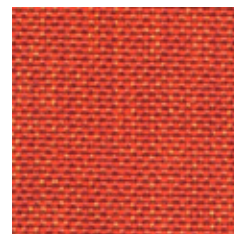
80



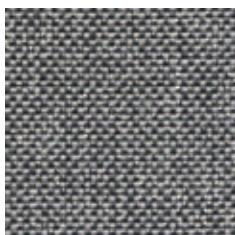
102



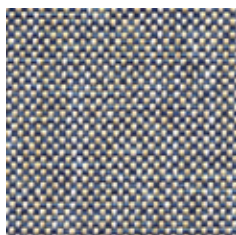
61



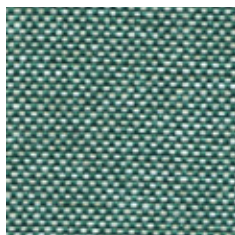
64



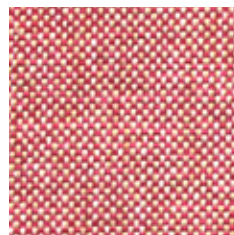
21



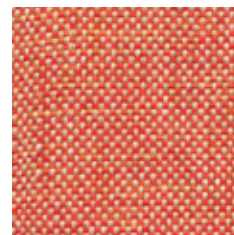
71



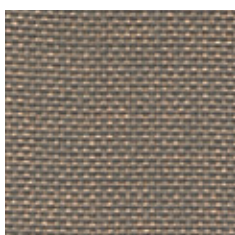
101



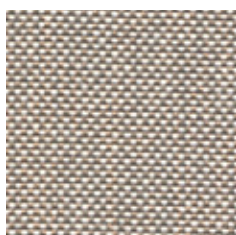
54



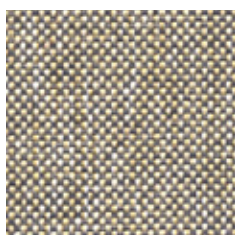
53



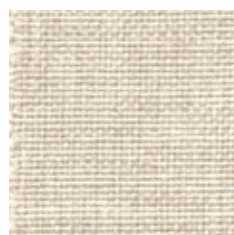
40



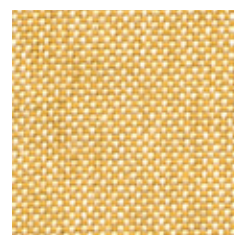
10



12



3



50



WIDHT/ ANCHO/ LARGEUR: 140cm
WEIHT/ PESO/ POID: 255gr/m2

Composition:

100% polyolefin.

Light fastness:

6 - 7, EN ISO 105-B02.

Abrasion:

40.000 Martindale EN ISO 12947-2.

Resistance to pilling:

4 - 5, EN ISO 12945-2.

Dye fastness to rubbing:

Wet 4 - 5. Dry 4 - 5, EN ISO 105x12.

Flammability:

UNE EN ISO 1021-1 • BS 5852 • DIN 66084 classification P-c • CAL TB 117 section E, part 1 • NFPA 260 cover fabric class 1.

*Batch to catch variations may occur within commercial tolerances.

Composición:

100% poliolefina.

Solidez a la luz:

6 - 7, EN ISO 105-B02.

Abrasión:

40.000 Martindale EN ISO 12947-2.

R. a la formación de pilling:

4 - 5, EN ISO 12945-2.

Solidez de las tinturas al frote:

Seco 4 - 5. Mojado 4 - 5, EN ISO 105x12.

Inflamabilidad:

UNE EN ISO 1021-1 • BS 5852 • DIN 66084 classification P-c • CAL TB 117 section E, part 1 • NFPA 260 cover fabric class 1.

*De tintada a tintada se pueden producir variaciones tolerables de color.

Composición:

100% polyoléfine.

Solidité à la lumière:

6 - 7, EN ISO 105-B02.

Abrasion:

40.000 Martindale EN ISO 12947-2.

Résistance au pilling:

4 - 5, EN ISO 12945-2.

Résistance au frottement:

Sec 4 - 5. Humide 4 - 5, EN ISO 105x12.

Inflamabilité:

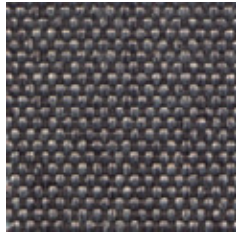
UNE EN ISO 1021-1 • BS 5852 • DIN 66084 classification P-c • CAL TB 117 section E, part 1 • NFPA 260 cover fabric class 1.

*Des variations tolérables de coloris d'un bain à un autre peuvent se manifester.

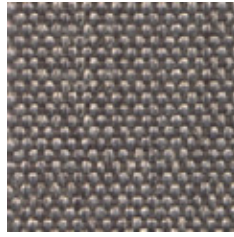
C2 – CORA



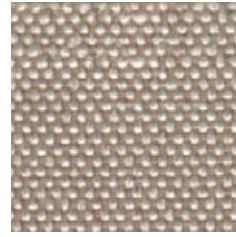
2



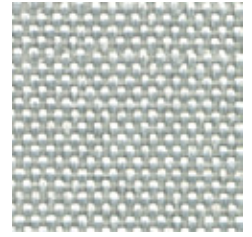
20



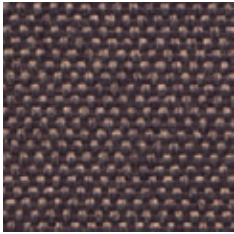
14



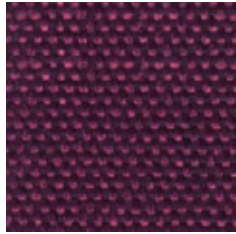
12



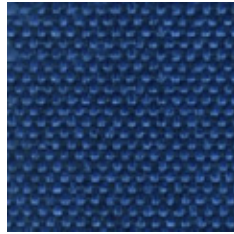
3



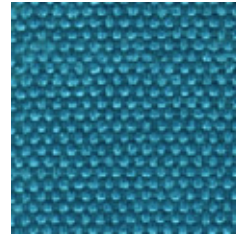
27



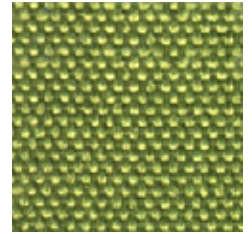
9



18



17



32



WIDHT/ ANCHO/ LARGEUR: 140cm
WEIHT/ PESO/ POID: 350gr/m2

Composition:

100% polyester.

Light fastness:

5 - 6 EN ISO 105-B02.

Abrasion:

100.000 Martindale EN ISO 12947-2.

Resistance to pilling:

4 - 5, EN ISO 12945-2.

Dye fastness to rubbing:

Wet 4 - 5. Dry 4 - 5, EN ISO 105x12.

Environment:

Oeko-Tex.

*Batch to batch variations may occur within commercial tolerances.

Composición:

100% poliéster.

Solidez a la luz:

5 - 6 EN ISO 105-B02.

Abrasión:

100.000 Martindale EN ISO 12947-2.

R. a la formación de pilling:

4 - 5, EN ISO 12945-2.

Solidez de las tinturas al frote:

Seco 4 - 5. Mojado 4 - 5, EN ISO 105x12.

Medio ambiente:

Oeko-Tex.

*De tintada a tintada se pueden producir variaciones tolerables de color.

Composition:

100% polyester.

Solidité à la lumière:

5 - 6 EN ISO 105-B02.

Abrasion:

100.000 Martindale EN ISO 12947-2.

Résistance au pilling:

4 - 5, EN ISO 12945-2.

Résistance au frottement:

Sec 4 - 5. Humide 4 - 5, EN ISO 105x12.

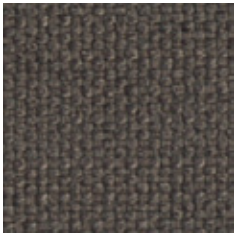
Environnement:

Oeko-Tex.

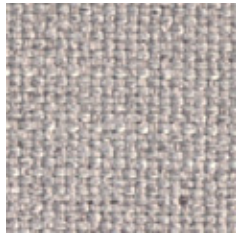
*Des variations tolérables de coloris d'un bain à un autre peuvent se manifester.



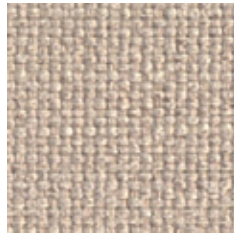
C2 – ORUM



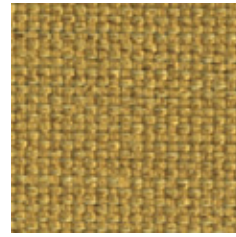
10



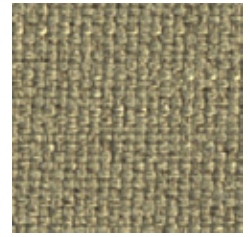
4



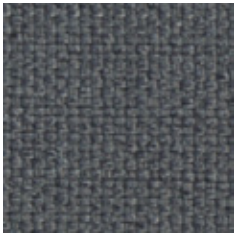
8



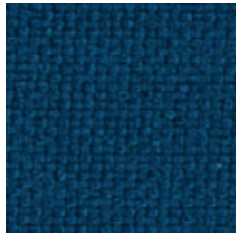
11



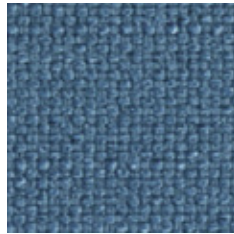
19



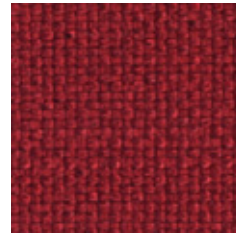
1



7



13



14



WIDHT/ ANCHO/ LARGEUR: 140cm
WEIHT/ PESO/ POID: 450gr/m²

Composition:

100% polyester.

Light fastness:

4 - 5 EN ISO 105-B02.

Abrasion:

35.000 Martindale EN ISO 12947-2.

Resistance to pilling:

4 - 5, EN ISO 12945-2.

Dye fastness to rubbing:

Wet 4 - 5. Dry 4 - 5, EN ISO 105x12.

*Batch to batch variations may occur within commercial tolerances.

Composición:

100% poliéster.

Solidez a la luz:

4 - 5 EN ISO 105-B02.

Abrasión:

35.000 Martindale EN ISO 12947-2.

R. a la formación de pilling:

4 - 5, EN ISO 12945-2.

Solidez de las tinturas al frote:

Seco 4 - 5. Mojado 4 - 5, EN ISO 105x12.

*De tintada a tintada se pueden producir variaciones tolerables de color.

Composition:

100% polyester.

Solidité à la lumière:

4 - 5 EN ISO 105-B02.

Abrasion:

35.000 Martindale EN ISO 12947-2.

Résistance au pilling:

4 - 5, EN ISO 12945-2.

Résistance au frottement:

Sec 4 - 5. Humide 4 - 5, EN ISO 105x12.

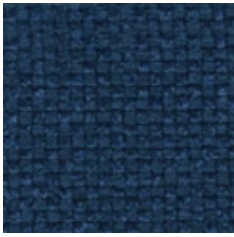
*Des variations tolérables de coloris d'un bain à un autre peuvent se manifester.



Anti stain



C2 – HILTON



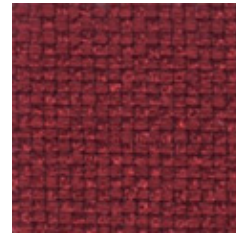
14



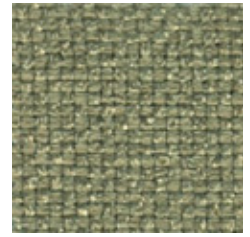
1



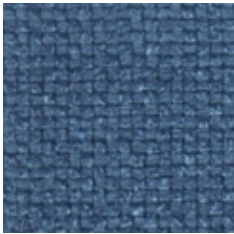
9



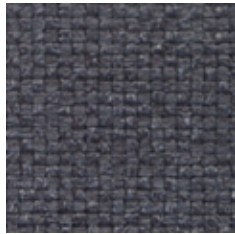
12



18



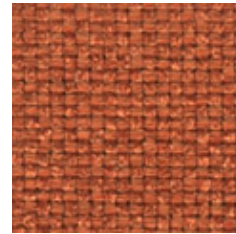
13



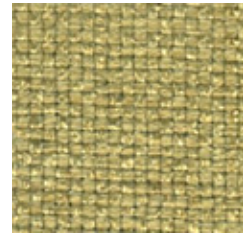
2



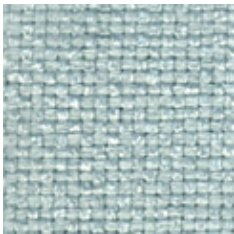
8



11



17



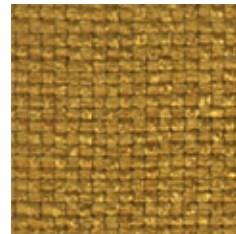
16



4



6



10



WIDHT/ ANCHO/ LARGEUR: 140cm
WEIHT/ PESO/ POID: 380gr/m²

Composition:

100% polyester.

Lightfastness:

4, ISO 105-B02.

Abrasion:

25.000 Martindale EN ISO 12947-2.

Resistance to pilling:

4 - 5, EN ISO 12945/2.

Fastness to rubbing:

Wet 4 - 5. Dry 4 - 5, ISO 105 X12.

*Batch to batch variations may occur within commercial tolerances.

Composición:

100% poliéster.

Solidez a la luz:

4, ISO 105-B02.

Abrasión:

25.000 Martindale EN ISO 12947-2.

Resistencia a la formación de pilling:

4 - 5, EN ISO 12945/2.

Resistencia al rozamiento:

Humedo 4 - 5. Seco 4 - 5, ISO 105 X12.

*De tintada a tintada se pueden producir variaciones tolerables de color.

Composition:

100% polyester.

Solidité à la lumière:

4, ISO 105-B02.

Abrasion:

25.000 Martindale EN ISO 12947-2.

Résistance au pilling:

4 - 5, EN ISO 12945/2.

Résistance aux frottements:

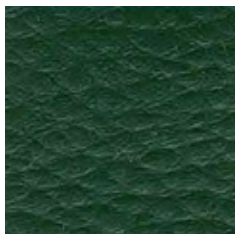
Sec 4 - 5. Humide 4 - 5, ISO 105 X12.

*Des variations tolérables de coloris d'un bain à un autre peuvent se manifester.



Anti stain

C2 – RENO



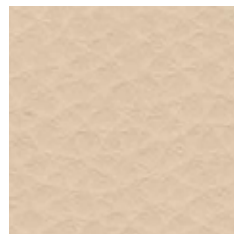
37



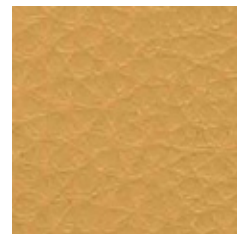
8



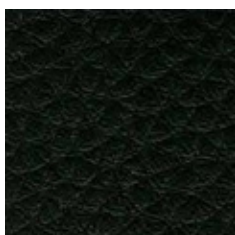
96



56



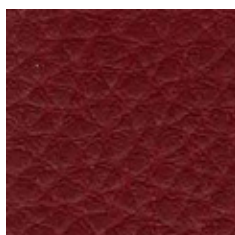
51



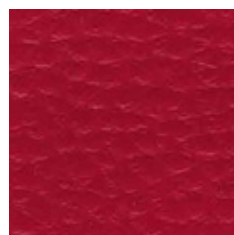
75



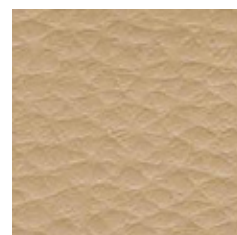
97



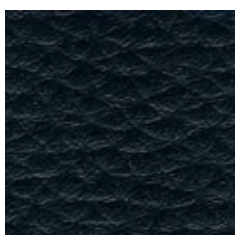
25



78



6



47



5



WIDHT/ ANCHO/ LARGEUR: 140cm
WEIHT/ PESO/ POID: 550gr/m²

Composition:

100% P.V.C.

Light fastness:

6 - 7, ISO 105 Bo2.

Abrasion:

45.000 Martindale EN ISO 12947.

Breaking strength:

Warp 213N. Weft 245N EN ISO 13934-1 •
UNE-EN ISO 1421.

Tear strength:

Warp 50,16% N. Weft 65,16% N EN ISO
13937-3.

Resistance to pilling:

5, ISO 12945-2.

Fastness to rubbing:

Wet 4 - 5. Dry 4 - 5, ISO 105 X12.

Flammability:

UNE - EN 1021: 1 & 2 • BS 5852 • EN 23 727-
90 IR.

*Batch to batch variations may occur within commercial tolerances.

Composición:

100% P.V.C.

Solidez a la luz:

6 - 7, ISO 105 Bo2.

Abrasión:

45.000 Martindale EN ISO 12947.

Resistencia a la rotura:

Urdimbre 213N. Trama 245N EN ISO 13934-1 •
UNE-EN ISO 1421.

Resistencia a los desgarros:

Urdimbre 50,16% N. Trama 65,16% N EN ISO
13937-3.

R. a la formación de pilling:

5, ISO 12945-2.

Resistencia al rozamiento:

Seco 4 - 5. Mojado 4 - 5, ISO 105 X12.

Inflamabilidad:

UNE - EN 1021: 1 & 2 • BS 5852 • EN 23 727-
90 IR.

*De tintada a tintada se pueden producir variaciones tolerables de color.

Composition:

100% P.V.C.

Solidité à la lumière:

6 - 7, ISO 105 Bo2.

Abrasion:

45.000 Martindale EN ISO 12947.

Résistance à la rupture:

Warp 213N. Trame 245N EN ISO 13934-1 •
UNE-EN ISO 1421.

Résistance à la déchirure:

Warp 50,16% N. Trame 65,16% N EN ISO
13937-3.

Résistance au pilling:

5, ISO 12945-2.

Résistance aux frottements:

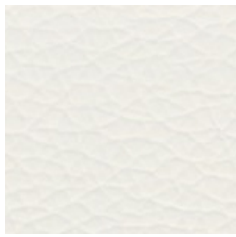
Sec 4 - 5. Humide 4 - 5, ISO 105 X12.

Inflamabilité:

UNE - EN 1021: 1 & 2 • BS 5852 • EN 23 727-
90 IR.

*Des variations tolérables de coloris d'un bain à un autre peuvent se manifester.

C3 – OMM



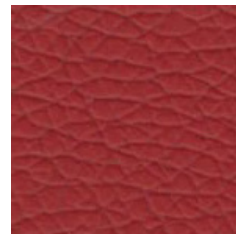
101



108



137



127



120



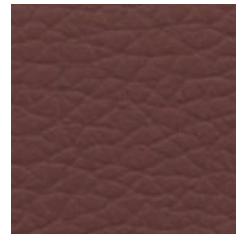
110



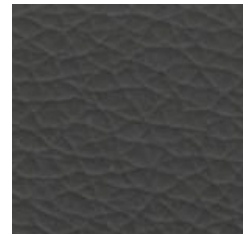
123



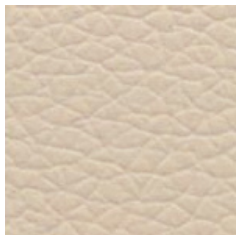
130



140



1300



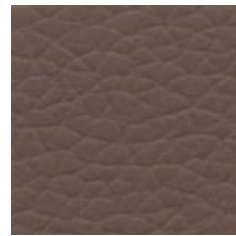
115



142



167



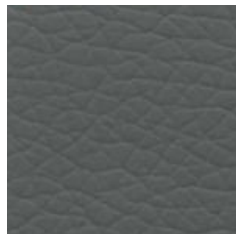
154



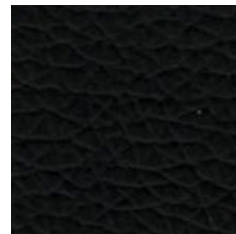
170



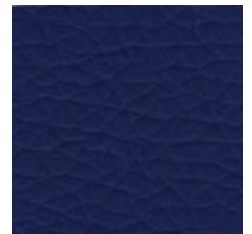
185



189



191



182



WIDHT/ ANCHO/ LARGEUR: 140cm
WEIHT/ PESO/ POID: 770gr/m2

Composition:

100% polypropylene.

Light fastness:

>=6, EN ISO 105-Bo2.

Tensile strength:

Weft 670 N/cm. Warp 490 N/cm, ISO 13934-2.

Tear strength:

Weft 40 N/cm. Warp 35 N/cm, ISO 13937-3.

Seam slippage resistance:

Weft 2,5mm. Warp 3,0mm, ISO 13936-2.

Flexiones bally:

>100.000 cycles, DIN EN ISO 32100/DIN 53359.

Abrasion:

250.000 Martindale, ISO 12947-2.

Colour fastness to rubbing:

Dry 5. Wet 5, EN ISO 105-X12.

Flammability:

UNE - EN 1021: 1 & 2 • BS 5852 part 1.

Composición:

100% polipropileno.

Solidez a la luz:

>=6, EN ISO 105-Bo2.

Resistencia a la tracción:

Trama 670 N/cm. Urdimbre 490 N/cm, ISO 13934-2.

Resistencia al desgarro:

Trama 40 N/cm. Urdimbre 35 N/cm, ISO 13937-3.

Resistencia de las costuras:

Trama 2,5mm. Urdimbre 3,0mm, ISO 13936-2.

Flexiones bally:

>100.000 ciclos, DIN EN ISO 32100/DIN 53359.

Abrasion:

250.000 Martindale, ISO 12947-2.

Solidez del color al frote:

Seco 5. Mojado 5, EN ISO 105-X12.

Inflamabilidad:

UNE - EN 1021: 1 & 2 • BS 5852 parte 1.

Composition:

100% polypropylène.

Solidité à la lumière:

>=6, EN ISO 105-Bo2.

Résistance à la traction:

Trame 670 N/cm. Urdimbre 490 N/cm, ISO 13934-2.

Résistance à la déchirure:

Trame 40 N/cm. Urdimbre 35 N/cm, ISO 13937-3.

Résistance des coutures:

Trame 2,5mm. Urdimbre 3,0mm, ISO 13936-2.

Flexions Bally:

>100.000 cycles, DIN EN ISO 32100/DIN 53359.

Abrasion:

250.000 Martindale, ISO 12947-2.

Solidité des couleurs au frottement:

Sec 5. Humide 5, EN ISO 105-X12.

Inflamabilité:

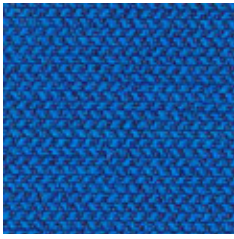
UNE - EN 1021: 1 & 2 • BS 5852 part 1.

*Batch to batch variations may occur within commercial tolerances.

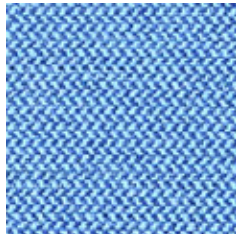
*De tintada a tintada se pueden producir variaciones tolerables de color.

*Des variations tolérables de coloris d'un bain à un autre peuvent se manifester.

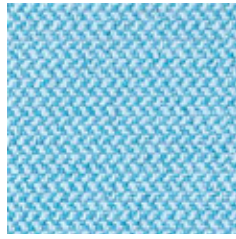
C3 – ERA



12



08



20



11



13



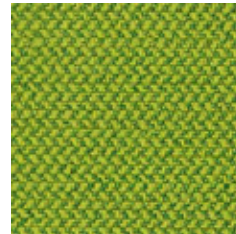
21



2



3



16



1



19



6



9



WIDHT/ ANCHO/ LARGEUR: 140cm
WEIHT/ PESO/ POID: 320gr/m²

Composition:

100% polyester.

Light fastness:

5, EN ISO 105 B02.

Abrasion:

100.000 Martindale EN ISO 12947.

Fastness to rubbing:

Wet 4, Dry 4, ISO 105 X12.

Flammability:

BS EN 1021-1 • BS EN 1021-2 • BS 7176.

*Batch to batch variations may occur within commercial tolerances.

Composición:

100% poliéster.

Solidez a la luz:

5, EN ISO 105 B02.

Abrasión:

100.000 Martindale EN ISO 12947.

Resistencia al rozamiento:

Humedo 4, Seco 4, ISO 105 X12.

Inflamabilidad:

BS EN 1021-1 • BS EN 1021-2 • BS 7176.

*De tintada a tintada se pueden producir variaciones tolerables de color.

Composition:

100% polyester.

Solidité à la lumière:

5, EN ISO 105 B02.

Abrasion:

100.000 Martindale EN ISO 12947.

Résistance aux frottements:

Sec 4, Humide 4, ISO 105 X12.

Inflamabilité:

BS EN 1021-1 • BS EN 1021-2 • BS 7176.

*Des variations tolérables de coloris d'un bain à un autre peuvent se manifester.

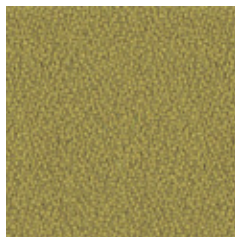
C3 – XTREME



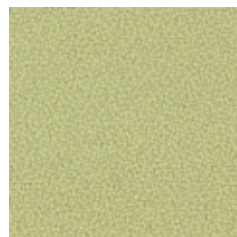
91



108



77



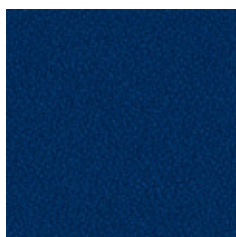
96



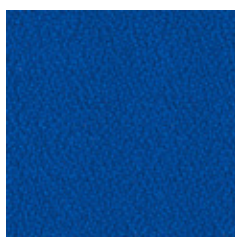
74



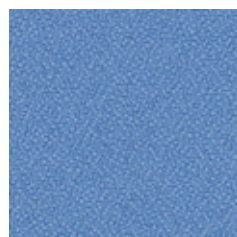
84



26



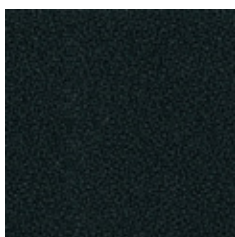
82



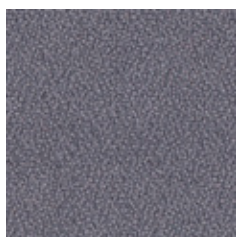
169



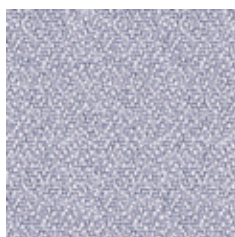
174



9



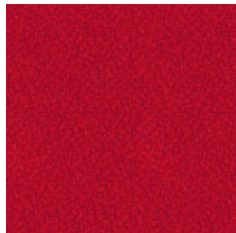
81



173



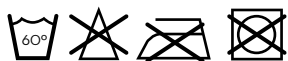
106



79



76



WIDHT/ ANCHO/ LARGEUR: 140cm
WEIHT/ PESO/ POID: 310gr/m2

Composition:

100% recycled polyester.

Light fastness:

6, EN ISO 105 B02.

Abrasion:

100.000 Martindale EN ISO 12947.

Resistance to pilling:

5, ISO 12945-2.

Fastness to rubbing:

Wet 4, Dry 4, ISO 105 X12.

Flammability:

BS EN 1021-1 • BS EN 1021-2 • BS 7176 Low Hazard
• BS 5852 section 4 ignition source 5 • BS 7176
Medium Hazard • UNI 8456 & UNI 9174 Class 1 •
NF-P-92-507 M1 • NF D 60-013 • DIN 4102 B1.

Environment:

Recycled • EU Ecolabel.

*Batch to batch variations may occur within commercial tolerances.

Composición:

100% poliéster reciclado.

Solidez a la luz:

6, EN ISO 105 B02.

Abrasion:

100.000 Martindale EN ISO 12947.

R. a la formación de pilling:

5, ISO 12945-2.

Resistencia al rozamiento:

Humedo 4, Seco 4, ISO 105 X12.

Inflamabilidad:

BS EN 1021-1 • BS EN 1021-2 • BS 7176 Low Hazard
• BS 5852 section 4 ignition source 5 • BS 7176
Medium Hazard • UNI 8456 & UNI 9174 Class 1 •
NF-P-92-507 M1 • NF D 60-013 • DIN 4102 B1.

Medio ambiente:

Reciclado • EU Ecolabel.

*De tintada a tintada se pueden producir variaciones tolerables de color.

Composition:

100% polyester recyclé.

Solidité à la lumière:

6, EN ISO 105 B02.

Abrasion:

100.000 Martindale EN ISO 12947.

Résistance au pilling:

5, ISO 12945-2.

Résistance aux frottements:

Sec 4, Humide 4, ISO 105 X12.

Inflamabilité:

BS EN 1021-1 • BS EN 1021-2 • BS 7176 Low Hazard
• BS 5852 section 4 ignition source 5 • BS 7176
Medium Hazard • UNI 8456 & UNI 9174 Class 1 •
NF-P-92-507 M1 • NF D 60-013 • DIN 4102 B1.

Environnement:

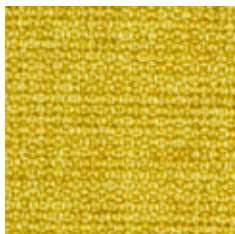
Recyclé • EU Ecolabel.

*Des variations tolérables de coloris d'un bain à un autre peuvent se manifester.

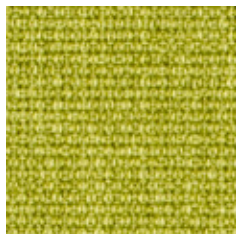


C3 – MEDLEY

by **Gabriel**



62002



68002



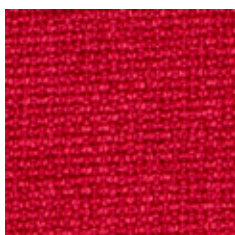
67002



61003



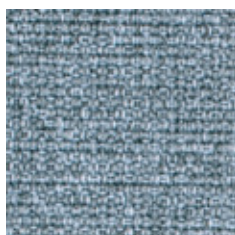
61004



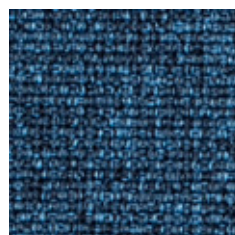
64019



65011



66008



66010



60999



60° shrinkage max. 1%



74° shrinkage max. 3%

WIDHT/ ANCHO/ LARGEUR: 140cm
WEIHT/ PESO/ POID: 510gr/m2

Composition:

100% polyester.

Light fastness:

5 - 7, EN ISO 105 B02.

Abrasion:

75.000 Martindale EN ISO 12947-2.

Resistance to pilling:

4, EN ISO 12945-2.

Fastness to rubbing:

Wet 4 - 5. Dry 4 - 5, ISO 105 X12.

Flammability:

BS EN 1021 1&2 • BS EN 1021-1 cigarette • BS 5852 Part 1 0,1 Cigarette & match • California Bulletin CAL 117-E-Class 1 • Class Uno UNI 9175 Class 1l EMME • CA TB 117-2013 • ÖNORM B 3825-B2-3800-Q1 UK.

*Batch to catch variations may occur within commercial tolerances.

Composición:

100% poliéster.

Solidez a la luz:

5 - 7, EN ISO 105 B02.

Abrasión:

75.000 Martindale EN ISO 12947-2.

Resistencia a la formación de pilling:

4, EN ISO 12945-2.

Resistencia al rozamiento:

Humedo 4 - 5. Seco 4 - 5, ISO 105 X12.

Inflamabilidad:

BS EN 1021 1&2 • BS EN 1021-1 cigarette • BS 5852 Part 1 0,1 Cigarette & match • California Bulletin CAL 117-E-Class 1 • Class Uno UNI 9175 Class 1l EMME • CA TB 117-2013 • ÖNORM B 3825-B2-3800-Q1 UK.

*De tintada a tintada se pueden producir variaciones tolerables de color.

Composition:

100% polyester.

Solidité à la lumière:

5 - 7, EN ISO 105 B02.

Abrasion:

75.000 Martindale EN ISO 12947-2.

Résistance aux frottements:

4, EN ISO 12945-2.

Résistance aux frottements:

Sec 4 - 5. Humide 4 - 5, ISO 105 X12.

Inflamabilité:

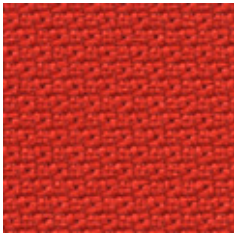
BS EN 1021 1&2 • BS EN 1021-1 cigarette • BS 5852 Part 1 0,1 Cigarette & match • California Bulletin CAL 117-E-Class 1 • Class Uno UNI 9175 Class 1l EMME • CA TB 117-2013 • ÖNORM B 3825-B2-3800-Q1 UK.

*Des variations tolérables de coloris d'un bain à un autre peuvent se manifester.



C4 – STEP

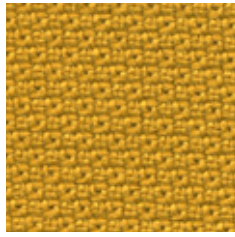
Gabriel



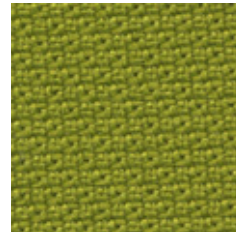
2440 - 36012



2440 - 61103



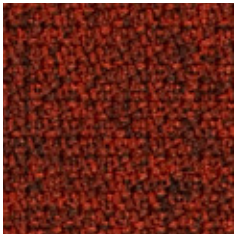
2440 - 62057



2440 - 68119



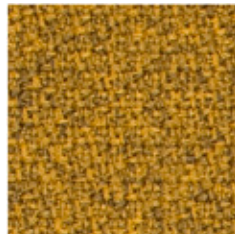
2440 - 68121



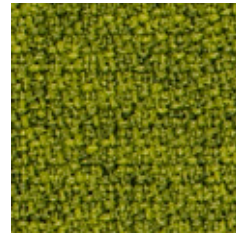
2442 - 63075



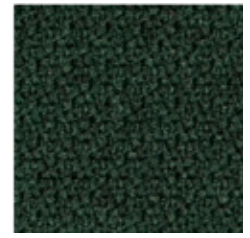
2442 - 61103



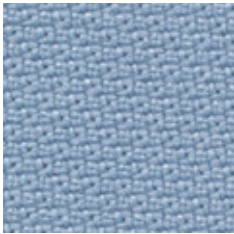
2442 - 62057



2442 - 68119



2442 - 68121



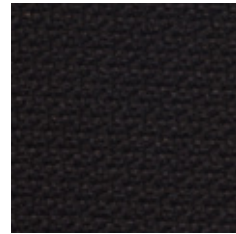
2440 - 67004



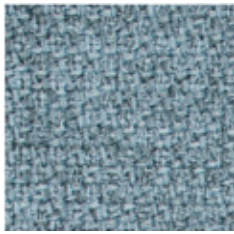
2440 - 65011



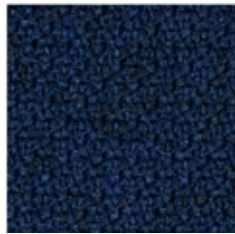
2440 - 66019



2440 - 60999



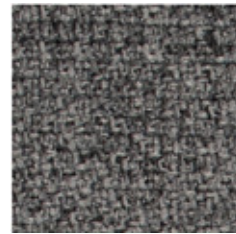
2442 - 67004



2442 - 65011



2442 - 66019



2442 - 60011



60° shrinkage max. 3%

WIDHT/ ANCHO/ LARGEUR: 140cm
WEIHT/ PESO/ POID: 470gr/m²

Composition:

100% trevira CS.

Light fastness:

5 - 7, ISO 105 B02.

Abrasion:

100.000 Martindale EN ISO 12947.

Resistance to pilling:

4 - 5, ISO 12945-2.

Fastness to rubbing:

Wet 4 - 5. Dry 4 - 5, ISO 105 X12.

Flammability:

California Bulletin CAL 117-E-Class 1 • IMO MSC 307 (88) Annex 1 part 8 • MED Certificate IMO • DIN 4102 B1 • NFP 92-503/504/505 M1 • BS EN 1021 1&2 • BS 5852 Part 1 0,1 Cigarette & match • BS 5852 Crib 5 • Class Uno UNI 9175 Class 1 I EMME • ÖNORM B 3825-B1-3800-Q1 UK • FAR/JAR 25,853 (a) (i) (ii) • BS 7176 Medium Hazard • AM 18 - NF D 60-013 • Class Uno UNI 9175 Class 1 I EMME.

Environment:

Oeko-Tex • EU Ecolabel • 100% free of heavy metals.

Composición:

100% trevira CS.

Solidez a la luz:

5 - 7, ISO 105 B02.

Abrasión:

100.000 Martindale EN ISO 12947.

R. a la formación de pilling:

4 - 5, ISO 12945-2.

Resistencia al rozamiento:

Seco 4 - 5. Mojado 4 - 5, ISO 105 X12.

Inflamabilidad:

California Bulletin CAL 117-E-Class 1 • IMO MSC 307 (88) Annex 1 part 8 • MED Certificate IMO • DIN 4102 B1 • NFP 92-503/504/505 M1 • BS EN 1021 1&2 • BS 5852 Part 1 0,1 Cigarette & match • BS 5852 Crib 5 • Class Uno UNI 9175 Class 1 I EMME • ÖNORM B 3825-B1-3800-Q1 UK • FAR/JAR 25,853 (a) (i) (ii) • BS 7176 Medium Hazard • AM 18 - NF D 60-013 • Class Uno UNI 9175 Class 1 I EMME.

Medio ambiente:

Oeko-Tex • EU Ecolabel • 100% free of heavy metals.

Composition:

100% trevira CS.

Solidité à la lumière:

5 - 7, ISO 105 B02.

Abrasion:

100.000 Martindale EN ISO 12947.

Résistance au pilling:

4 - 5, ISO 12945-2.

Résistance aux frottements:

Sec 4 - 5. Humide 4 - 5, ISO 105 X12.

Inflamabilité:

California Bulletin CAL 117-E-Class 1 • IMO MSC 307 (88) Annex 1 part 8 • MED Certificate IMO • DIN 4102 B1 • NFP 92-503/504/505 M1 • BS EN 1021 1&2 • BS 5852 Part 1 0,1 Cigarette & match • BS 5852 Crib 5 • Class Uno UNI 9175 Class 1 I EMME • ÖNORM B 3825-B1-3800-Q1 UK • FAR/JAR 25,853 (a) (i) (ii) • BS 7176 Medium Hazard • AM 18 - NF D 60-013 • Class Uno UNI 9175 Class 1 I EMME.

Environnement:

Oeko-Tex • EU Ecolabel • 100% free of heavy metals.



17



C4 – ASPECT



31



15



17



18



14



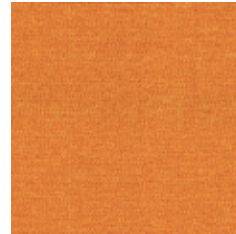
6



4



8



2



1



24



26



19



25



WIDHT/ ANCHO/ LARGEUR: 140cm
WEIHT/ PESO/ POID: 325gr/m2

Composition:

75% trevira, 25% polyester.

Light fastness:

5, EN ISO 105 B02.

Abrasion:

35.000 Martindale EN ISO 12947.

Fastness to rubbing:

Wet 4, Dry 4, ISO 105 X12.

Flammability:

BS EN 1021-1 • BS EN 1021-2 • BS 7176 Low Hazard • BS 7176 Medium Hazard • BS 5852 section 4 ignition source 5 • DIN 4102 B1 • UNI 9175 classe 1 IM • ÖNORM B 3825 & A 3800.

*Batch to batch variations may occur within commercial tolerances.

Composición:

75% trevira, 25% poliéster.

Solidez a la luz:

5 - 7, EN ISO 105 B02.

Abrasion:

35.000 Martindale EN ISO 12947.

Resistencia al rozamiento:

Húmedo 4, Seco 4, ISO 105 X12.

Inflamabilidad:

BS EN 1021-1 • BS EN 1021-2 • BS 7176 Low Hazard • BS 7176 Medium Hazard • BS 5852 section 4 ignition source 5 • DIN 4102 B1 • UNI 9175 classe 1 IM • ÖNORM B 3825 & A 3800.

*De tintada a tintada se pueden producir variaciones tolerables de color.

Composition:

75% trevira, 25% polyester.

Solidité à la lumière:

5 - 7, EN ISO 105 B02.

Abrasion:

35.000 Martindale EN ISO 12947.

Résistance aux frottements:

Sec 4, Humide 4, ISO 105 X12.

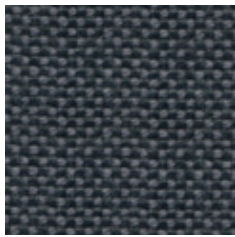
Inflamabilité:

BS EN 1021-1 • BS EN 1021-2 • BS 7176 Low Hazard • BS 7176 Medium Hazard • BS 5852 section 4 ignition source 5 • DIN 4102 B1 • UNI 9175 classe 1 IM • ÖNORM B 3825 & A 3800.

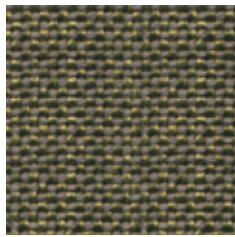
*Des variations tolérables de coloris d'un bain à un autre peuvent se manifester.



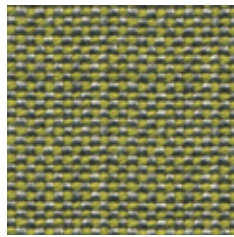
C4 – FUSION



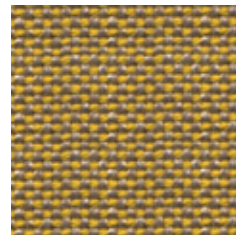
53



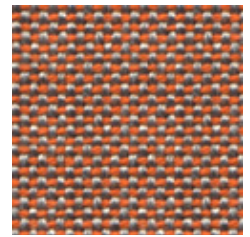
31



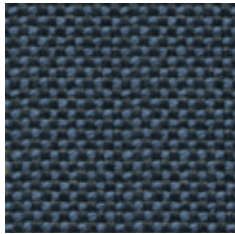
36



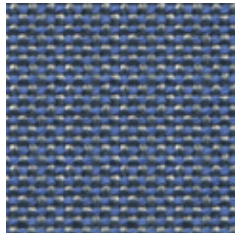
20



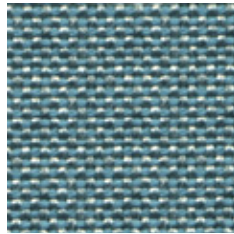
24



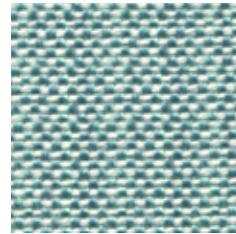
45



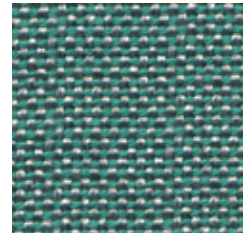
46



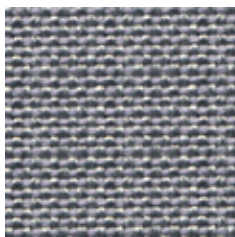
49



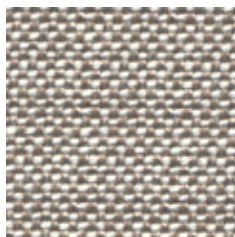
40



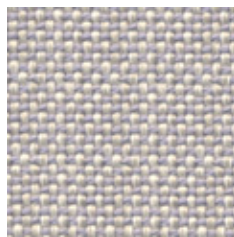
33



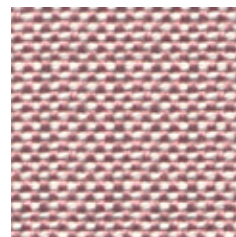
51



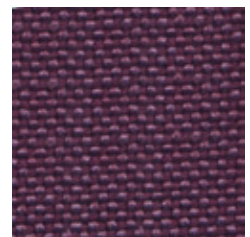
8



7



61



63



WIDHT/ ANCHO/ LARGEUR: 140cm
WEIHT/ PESO/ POID: 750gr/m2

Composition:

60% new wool, 40% polypropylene.

Lightfastness:

5 - 6, ISO 105-B02.

Abrasion:

62.000 Martindale EN ISO 12947 • 4-5, EN ISO 12947/2, EN 14465 / EN ISO 105-A02.

Resistance to pilling:

4 - 5, EN ISO 12945/2.

Fastness to rubbing:

Wet 4 - 5. Dry 4 - 5, ISO 105 X12.

Flammability:

BS5852 O/1 • EN 1021 1/2 • BS7171 Low hazard • BS7176 Medium hazard • CAL TB I 17;sect I 2013 • NFPA 260:2013.

Environment:

Oeko-Tex • ISO 14001 • 100% free of heavy metals.

*Batch to batch variations may occur within commercial tolerances.

Composición:

60% lana virgen, 40% polipropileno.

Solidez a la luz:

5 - 6, ISO 105-B02.

Abrasión:

62.000 Martindale EN ISO 12947 • 4-5, EN ISO 12947/2, EN 14465 / EN ISO 105-A02.

Resistencia a la formación de pilling:

4 - 5, EN ISO 12945/2.

Resistencia al rozamiento:

Húmedo 4 - 5. Seco 4 - 5, ISO 105 X12.

Inflamabilidad:

BS5852 O/1 • EN 1021 1/2 • BS7171 Low hazard • BS7176 Medium hazard • CAL TB I 17;sect I 2013 • NFPA 260:2013.

Medio ambiente:

Oeko-Tex • ISO 14001 • 100% libre de metales pesados.

*De tintada a tintada se pueden producir variaciones tolerables de color.

Composition:

60% laine, 40% polypropylène.

Solidité à la lumière:

5 - 6, ISO 105-B02.

Abrasion:

62.000 Martindale EN ISO 12947 • 4-5, EN ISO 12947/2, EN 14465 / EN ISO 105-A02.

Résistance au pilling:

4 - 5, EN ISO 12945/2.

Résistance aux frottements:

Sec 4 - 5. Humide 4 - 5, ISO 105 X12.

Inflamabilité:

BS5852 O/1 • EN 1021 1/2 • BS7171 Low hazard • BS7176 Medium hazard • CAL TB I 17;sect I 2013 • NFPA 260:2013.

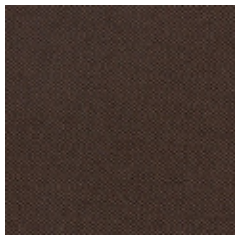
Environnement:

Oeko-Tex • ISO 14001 • 100% free of heavy metals.

*Des variations tolérables de coloris d'un bain à un autre peuvent se manifester.



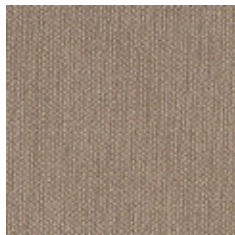
C4 – SILVER



5



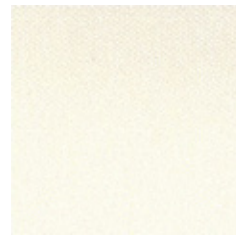
4024



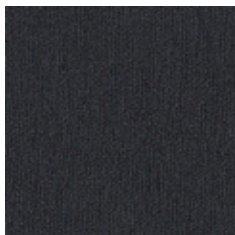
9



1010



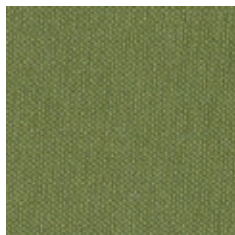
1077



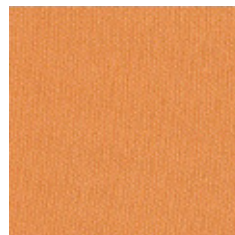
9002



3007



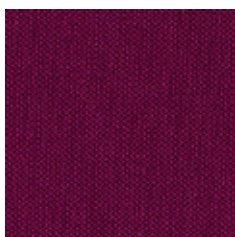
5020



6062



4001



2016



WIDHT/ ANCHO/ LARGEUR: 137cm
WEIHT/ PESO/ POID: 685gr/m²

Composition:

Topcoat: 100% vinyl. **Backing:** 100% polyester.

Light fastness:

7 - 8, DIN 54004 1000 hours pasa.

Abrasion:

300.000 Martindale EN ISO 12947.

Characteristics:

Antimicrobial protection • Antibacterial protection • Resistance to spitting and respiration. Urine resistance. Blood resistance. • Waterproof. • Oil resistance (Sunflower oil).

Flammability:

NF P 92-506 / M2 • EN 1021, Part 1 & 2 • DIN 4102 B2 • ÖNORM B 3825, Gruppe 1 - Schwerbrennbares Verhalten • ÖNORM A 3800, Teil 1, Qualmbildungsklasse Q1 -schwachqualmend • IMO A 652 (16) Annex 1, 8,2 and 8,3 • (MED) Council Directive 96/98 EC on marine equipment • UNI 9175 (1987) / UNI 9175/FAI (1994) Classe 1. IM (uno I EMME) • UNE 23.727-90 IR/ M2 • EN 71-2: 2006 + A1:2007 Safety of Toys - Part 2: Flammability • Directive 95/28/CE • FMVSS 302 • FAR 25/853.

*Order to order variations may occur within commercial tolerances.

Composición:

Capa: 100% vinyl. **Soporte:** 100% polyester.

Solidez a la luz:

7 - 8, DIN 54004 1000 horas pasa.

Abrasion:

300.000 Martindale EN ISO 12947.

Características:

Protección antimicrobiana • Protección antibacteriana • Protección antimicótica. • Resistencia a la transpiración, a la saliva humana, orina, sangre, aceites de girasol. • Impermeabilidad.

Inflamabilidad:

NF P 92-506 / M2 • EN 1021, Part 1 & 2 • DIN 4102 B2 • ÖNORM B 3825, Gruppe 1 - Schwerbrennbares Verhalten • ÖNORM A 3800, Teil 1, Qualmbildungsklasse Q1 -schwachqualmend • IMO A 652 (16) Annex 1, 8,2 and 8,3 • (MED) Council Directive 96/98 EC on marine equipment • UNI 9175 (1987) / UNI 9175/FAI (1994) Classe 1. IM (uno I EMME) • UNE 23.727-90 IR/ M2 • EN 71-2: 2006 + A1:2007 Safety of Toys - Part 2: Flammability • Directive 95/28/CE • FMVSS 302 • FAR 25/853.

*De una partida a otra se pueden producir variaciones tolerables de color.

Composition:

Face enduction: 100% vinyl. **Soporte:** 100% polyester.

Solidité à la lumière:

7 - 8, DIN 54004 1000 heures pasa

Abrasion:

300.000 Martindale EN ISO 12947.

Caracteristiques:

Protection antimicrobienne • Protection antibactérienne • Protection antimycosique. • Résistance à la transpiration et à la salive, à l'urine, au sang, à l'huile tourmesol. • Imperméable.

Inflamabilité:

NF P 92-506 / M2 • EN 1021, Part 1 & 2 • DIN 4102 B2 • ÖNORM B 3825, Gruppe 1 - Schwerbrennbares Verhalten • ÖNORM A 3800, Teil 1, Qualmbildungsklasse Q1 -schwachqualmend • IMO A 652 (16) Annex 1, 8,2 and 8,3 • (MED) Council Directive 96/98 EC on marine equipment • UNI 9175 (1987) / UNI 9175/FAI (1994) Classe 1. IM (uno I EMME) • UNE 23.727-90 IR/ M2 • EN 71-2: 2006 + A1:2007 Safety of Toys - Part 2: Flammability • Directive 95/28/CE • FMVSS 302 • FAR 25/853.

*Des variations tolérables de coloris d'une serie à un autre peuvent se manifester.



Anti stain

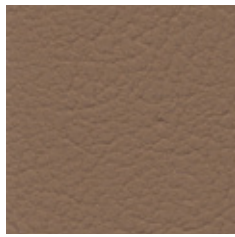
PERMABLOK³
ADVANCED VINYL PROTECTION



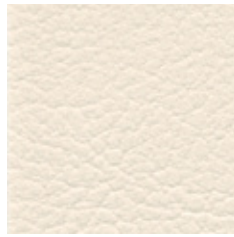
C4 – VALENCIA



1



9001



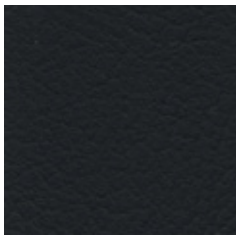
8032



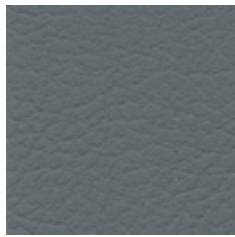
1048



35



9035



4043



4040



3068



5001



WIDHT/ ANCHO/ LARGEUR: 137cm
WEIHT/ PESO/ POID: 650gr/m2

Composition:

Topcoat: 100% vinyl. **Backing:** 100% polyester.

Light fastness:

6, DIN 54004 1000 hours pasa.

Abrasion:

300.000 Martindale EN ISO 12947.

Characteristics:

Antimicrobial protection • Antibacterial protection • Antimycotic protection. • Resistance to spitting and respiration. Urine resistance. Blood resistance. • Waterproof. • Oil resistance (Sunflower oil).

Flammability:

EN 1021 Part 1 & 2 • DIN 4102 B2 • UNI 9175 Classe 1.1 M • NF P 92-503 / M2 • UNE 23.727-90 IR/M.2 • MVSS302 • IMO A.652 (16)8.2 & 8.3.

*Batch to catch variations may occur within commercial tolerances.

Composición:

Capa: 100% vinyl. **Soporte:** 100% polyester.

Solidez a la luz:

6, DIN 54004 1000 horas pasa.

Abrasión:

300.000 Martindale EN ISO 12947.

Características:

Protección antimicrobiana • Protección antibacteriana • Protección antimicótica. • Resistencia a la transpiración, a la saliva humana, orina, sangre, aceites de girasol. • Impermeabilidad.

Inflamabilidad:

EN 1021 Part 1 & 2 • DIN 4102 B2 • UNI 9175 Classe 1.1 M • NF P 92-503 / M2 • UNE 23.727-90 IR/M.2 • MVSS302 • IMO A.652 (16)8.2 & 8.3.

*De tintada a tintada se pueden producir variaciones tolerables de color.

Composition:

Face enduction: 100% vinyl. **Soporte:** 100% polyester.

Solidité à la lumière:

6, DIN 54004 1000 heures pasa

Abrasion:

300.000 Martindale EN ISO 12947.

Caracteristiques:

Protection antimicrobienne • Protection antibactérienne • Protection antimycosique. • Résistance à la transpiration et à la salive, à l'urine, au sang, à l'huile tourmesol. • Imperméable.

Inflamabilité:

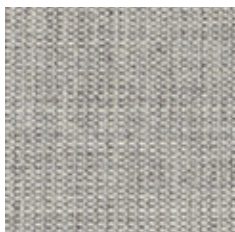
EN 1021 Part 1 & 2 • DIN 4102 B2 • UNI 9175 Classe 1.1 M • NF P 92-503 / M2 • UNE 23.727-90 IR/M.2 • MVSS302 • IMO A.652 (16)8.2 & 8.3.

*Des cariations tolérables de coloris d'un bain à un autre peuvent se manifester.

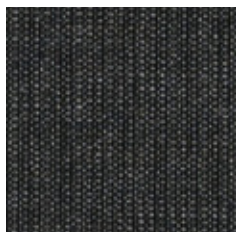


PERMABLOK³
ADVANCED VINYL PROTECTION

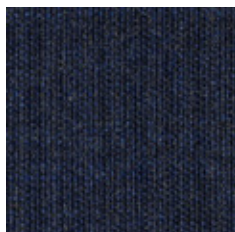
C5 – CANVAS



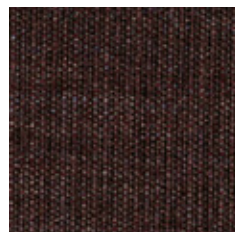
124



174



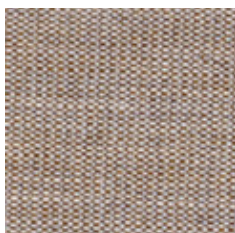
794



364



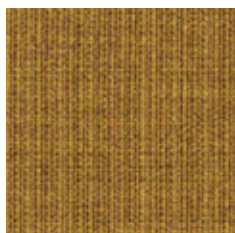
684



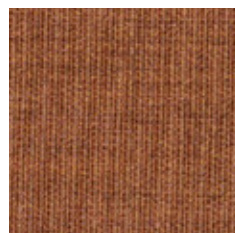
244



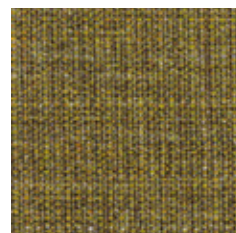
264



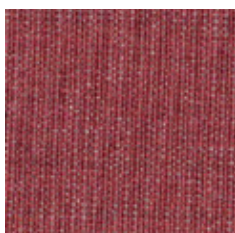
424



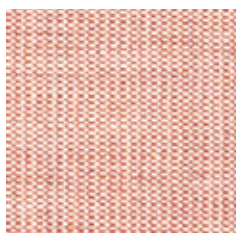
454



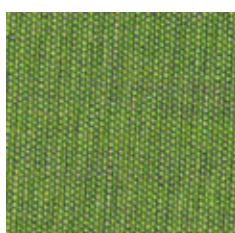
964



654



614



954



WIDHT/ ANCHO/ LARGEUR: 140cm.
WEIHT/ PESO/ POID: 480gr/m2

Designer:

Giulio Ridolfo.

Composition:

90% new wool, 10% nylon.

Lightfastness:

5 - 7, ISO 105-B02.

Abrasion:

100.000 Martindale EN ISO 12947.

Resistance to pilling:

4 - 5, EN ISO 12945.

Fire test:

EN 1021-1/2 • BS 5852 part 1 • BS 5852, ignition source 2-3 • DIN 4102 B2 • Önorm B1/Q1 • NF D 60 013 • UNI 9175 1IM • US cal. Tech. Bull. 117 • IMO A.652(16).

Environment:

Complies with EU ecolabel "The Flower" • 100% free of heavy metals.

*Batch to batch variations may occur within commercial tolerances.

Diseñador:

Giulio Ridolfo.

Composición:

90% lana virgen, 10% nylon.

Solidez a la luz:

5 - 7, ISO 105-B02.

Abrasión:

100.000 Martindale EN ISO 12947.

Resistencia a la formación de pilling:

4 - 5, EN ISO 12945.

Test de resistencia al fuego:

EN 1021-1/2 • BS 5852 part 1 • BS 5852, ignition source 2-3 • DIN 4102 B2 • Önorm B1/Q1 • NF D 60 013 • UNI 9175 1IM • US cal. Tech. Bull. 117 • IMO A.652(16).

Medio ambiente:

Cumple con la ecolabel de la UE "The Flower" • 100% libre de metales pesados.

*De tintada a tintada se pueden producir variaciones tolerables de color.

Créateur:

Giulio Ridolfo.

Composition:

90% laine, 10% nylon.

Solidité à la lumière:

5 - 7, ISO 105-B02.

Abrasion:

100.000 Martindale EN ISO 12947.

Résistance au pilling:

4 - 5, EN ISO 12945.

Résistance au feu:

EN 1021-1/2 • BS 5852 part 1 • BS 5852, ignition source 2-3 • DIN 4102 B2 • Önorm B1/Q1 • NF D 60 013 • UNI 9175 1IM • US cal. Tech. Bull. 117 • IMO A.652(16).

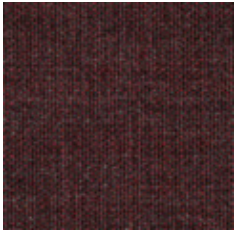
Environnement:

UE ecolabel "The Flower" • 100% free of heavy metals.

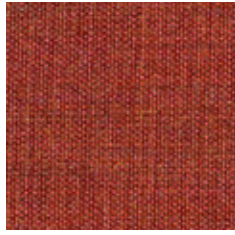
*Des variations tolérables de coloris d'un bain à un autre peuvent se manifester.



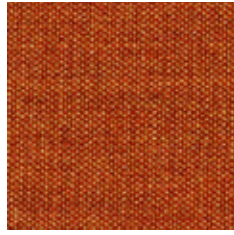
C5 – REMIX 2



662



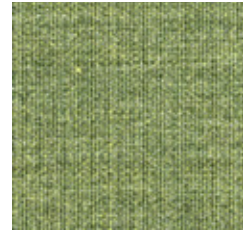
653



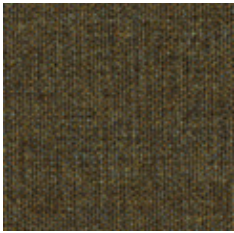
443



433



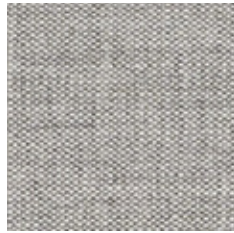
933



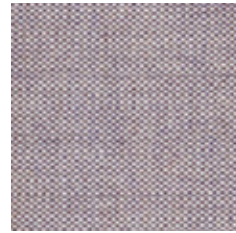
954



233



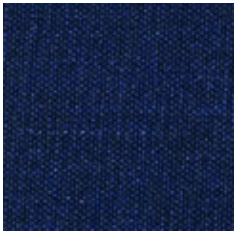
123



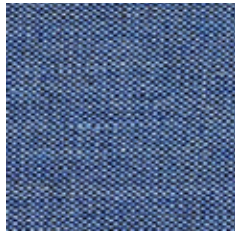
682



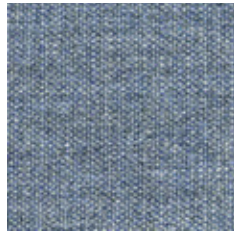
223



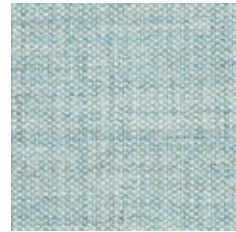
773



743



733



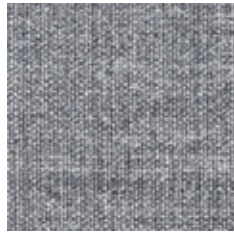
823



183



163



143



WIDHT/ ANCHO/ LARGEUR: 138cm
WEIHT/ PESO/ POID: 415gr/m2

Designer:

Giulio Ridolfo.

Composición:

90% new wool, 10% nylon.

Lightfastness:

5 - 7 ISO 105-B02.

Abrasion:

100.000 Martindale EN ISO 12947.

Resistance to pilling:

3 - 4, EN ISO 12945.

Fire test:

EN 1021-1/2 • BS 5852, ignition source 2-3 • Önorm B1/Q1 • NF D 60 013 • UNI 9175, 11M • AS/NZS 3837 class 2 • Cal. Tech. Bull. 117, Sec. E • IMO A.652(16).

Environment:

Complies with EU ecolabel "The Flower" • 100% free of heavy metals.

*Batch to catch variations may occur within commercial tolerances.

Diseñador:

Giulio Ridolfo.

Composición:

90% lana virgen, 10% nylon.

Solidez a la luz:

5 - 7 ISO 105-B02.

Abrasión:

100.000 Martindale EN ISO 12947.

Resistencia a la formación de pilling:

3 - 4, EN ISO 12945.

Test de resistencia al fuego:

EN 1021-1/2 • BS 5852, ignition source 2-3 • Önorm B1/Q1 • NF D 60 013 • UNI 9175, 11M • AS/NZS 3837 class 2 • Cal. Tech. Bull. 117, Sec. E • IMO A.652(16).

Medio ambiente:

Cumple con la ecolabel de la UE "The Flower" • 100% libre de metales pesados.

*De tintada a tintada se pueden producir variaciones tolerables de color.

Créateur:

Giulio Ridolfo.

Composition:

90% laine, 10% nylon.

Solidité à la lumière:

5 - 7 ISO 105-B02.

Abrasion:

100.000 Martindale EN ISO 12947.

Résistance au pilling:

3 - 4, EN ISO 12945.

Test de résistance al fuego:

EN 1021-1/2 • BS 5852, ignition source 2-3 • Önorm B1/Q1 • NF D 60 013 • UNI 9175, 11M • AS/NZS 3837 class 2 • Cal. Tech. Bull. 117, Sec. E • IMO A.652(16).

Environnement:

UE ecolabel "The Flower" • 100% free of heavy metals.

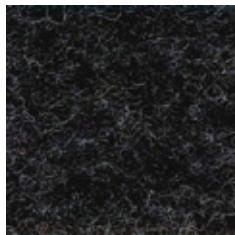
*Des variations tolérables de coloris d'un bain à un autre peuvent se manifester.



C5 – LUNA/EUROPOST



LUNA 4502



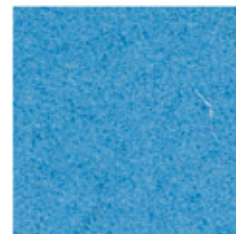
LUNA 4011



LUNA 4703



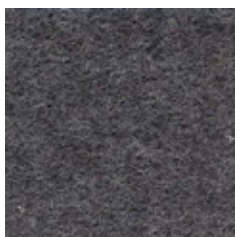
LUNA 4605



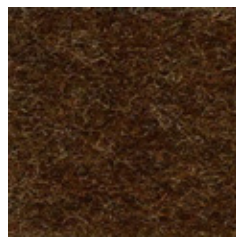
EUROPOST 66118



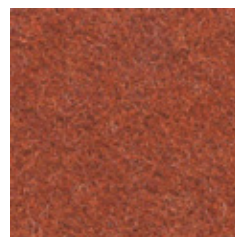
LUNA 4009



LUNA 4010



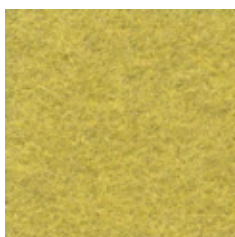
LUNA 4111



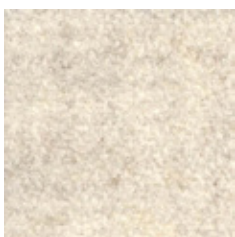
LUNA 4301



EUROPOST 63073



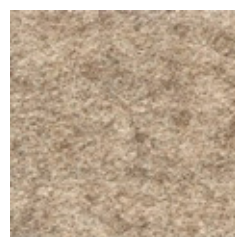
LUNA 4204



LUNA 4006



EUROPOST 61107



LUNA 4101



EUROPOST 61004



WIDHT/ ANCHO/ LARGEUR: 140cm
WEIHT/ PESO/ POID: Luna 680gr/m2. Europost 800gr/m2

Composition:

Luna 90% wool, 10% polyamide

Europost 100% wool

Light fastness:

5 - 6, EN ISO 105-B02.

Abrasion resistance:

Luna 70.000 Martindale EN ISO 12947-2.

Europost 50.000 Martindale EN ISO 12947-2.

Resistance to Pilling:

Luna 3 - 4, EN ISO 12945-2.

Europost 5, EN ISO 12945-2.

Dye fastness to rubbing:

Wet 4 - 5. Dry 4 - 5, EN ISO 105x12.

Flammability:

UNE EN ISO 10211 & 2 • BS 5852 o&1 • BS5852 scrib 5 • DIN 4102:B2 • NFP 92-503: M2 • IMO Res. A652 (16) • FAR 25.852 (b).

Environment:

Oeko-Tex • EU Ecolabel • 100% free of heavy metals.

*Batch to batch variations may occur within commercial tolerances.

Composición:

Luna 90% lana, 10% poliamida

Europost 100% lana

Solidez a la luz:

5 - 6, EN ISO 105-B02.

Resistencia a la abrasión:

Luna 70.000 Martindale EN ISO 12947-2.

Europost 50.000 Martindale EN ISO 12947-2.

R. a la formación de Pilling:

Luna 3 - 4, EN ISO 12945-2.

Europost 5, EN ISO 12945-2.

Solidez de las tinturas al frote:

Seco 4 - 5. Mojado 4 - 5, EN ISO 105x12.

Inflamabilidad:

UNE EN ISO 10211 & 2 • BS 5852 o&1 • BS5852 scrib 5 • DIN 4102:B2 • NFP 92-503: M2 • IMO Res. A652 (16) • FAR 25.852 (b).

Medio ambiente:

Oeko-Tex • EU Ecolabel • 100% free of heavy metals.

*De tintada a tintada se pueden producir variaciones tolerables de color.

Composición:

Luna 90% laine, 10% polyamide

Europost 100% laine

Solidité a la lumière:

5 - 6, EN ISO 105-B02.

Résistance à l'abrasion:

Luna 70.000 Martindale EN ISO 12947-2.

Europost 50.000 Martindale EN ISO 12947-2.

Résistance au Pilling:

Luna 3 - 4, EN ISO 12945-2.

Europost 5, EN ISO 12945-2.

Résistance au frottement:

Sec 4 - 5. Humide 4 - 5, EN ISO 105x12.

Inflamabilité:

UNE EN ISO 10211 & 2 • BS 5852 o&1 • BS5852 scrib 5 • DIN 4102:B2 • NFP 92-503: M2 • IMO Res. A652 (16) • FAR 25.852 (b).

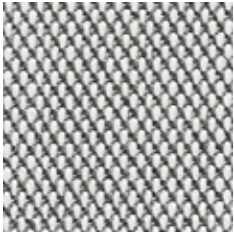
Environnement:

Oeko-Tex • EU Ecolabel • 100% free of heavy metals.

*Des variations tolérables de coloris d'un bain à un autre peuvent se manifester.



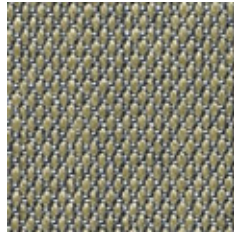
C6 – STEEL CUT TRIO 2



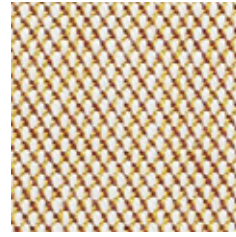
133



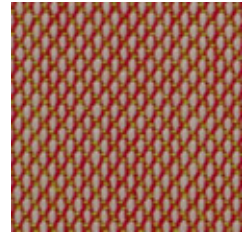
205



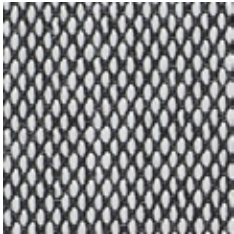
253



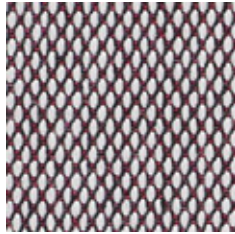
413



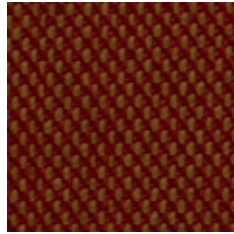
515



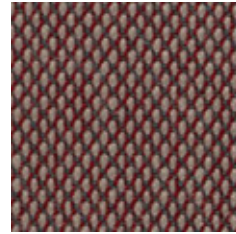
124



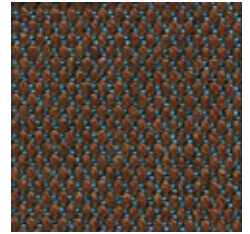
144



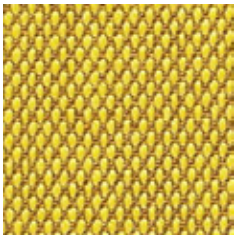
565



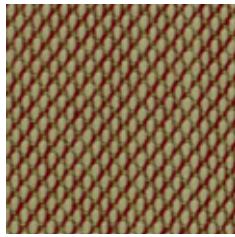
645



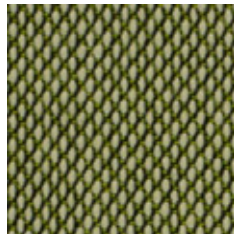
353



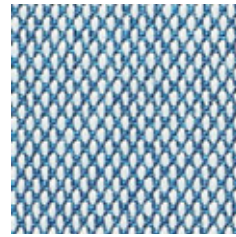
453



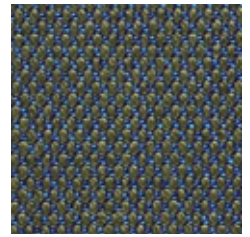
415



915



733



883



WIDHT/ ANCHO/ LARGEUR: 140cm.
WEIHT/ PESO/ POID: 770gr/m2

Designer:

Frans Dijkmeijer and Giulio Ridolfo.

Composition:

90% new wool, 10% nylon.

Lightfastness:

5-7 ISO 105-B02.

Abrasion:

100.000 Martindale EN ISO 12947.

Resistance to pilling:

3-4, EN ISO 12945.

Fire test:

EN 1021-1/2 • BS 5852, ignition source 2 - 3 • DIN 4102 B2 • Önorm B1/Q1 • NF D 60 013 • Italian Class 1IM • US Cal. Tech. Bull. 117, Sec. E • IMO A. 652(16).

Environment:

Complies with EU ecolabel "The Flower".

*Batch to batch variations may occur within commercial tolerances.

Diseñador:

Frans Dijkmeijer and Giulio Ridolfo.

Composición:

90% lana virgen, 10% nylon.

Solidez a la luz:

5-7 ISO 105-B02.

Abrasión:

100.000 Martindale EN ISO 12947.

Resistencia a la formación de pilling:

3-4, EN ISO 12945.

Test de resistencia al fuego:

EN 1021-1/2 • BS 5852, ignition source 2 - 3 • DIN 4102 B2 • Önorm B1/Q1 • NF D 60 013 • Italian Class 1IM • US Cal. Tech. Bull. 117, Sec. E • IMO A. 652(16).

Medio ambiente:

Cumple con la ecolabel de la UE "The Flower".

*De tintada a tintada se pueden producir variaciones tolerables de color.

Créateur:

Frans Dijkmeijer and Giulio Ridolfo.

Composition:

90% laine, 10% nylon.

Solidité à la lumière:

5 - 7 ISO 105-B02

Abrasion:

100.000 Martindale EN ISO 12947.

Résistance au pilling:

3 - 4, EN ISO 12945.

Résistance au feu:

EN 1021-1/2 • BS 5852, ignition source 2 - 3 • DIN 4102 B2 • Önorm B1/Q1 • NF D 60 013 • Italian Class 1IM • US Cal. Tech. Bull. 117, Sec. E • IMO A. 652(16).

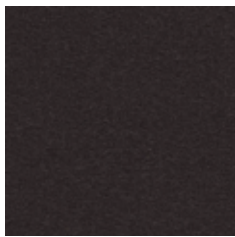
Environnement:

UE ecolabel "The Flower".

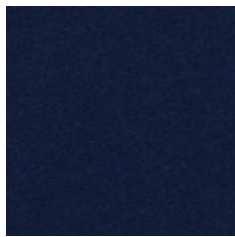
*Des variations tolérables de coloris d'un bain à un autre peuvent se manifester.



C6 – HERO



191



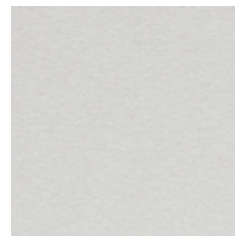
791



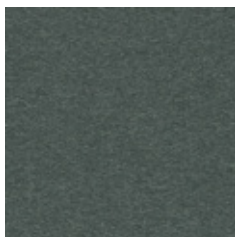
711



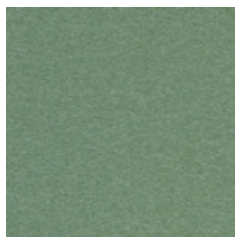
701



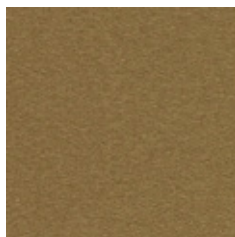
101



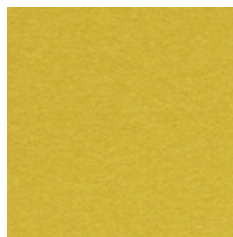
991



931



981



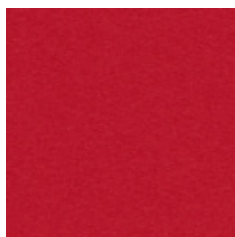
441



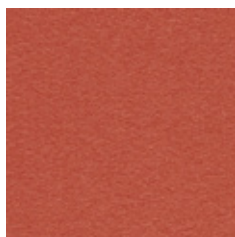
901



381



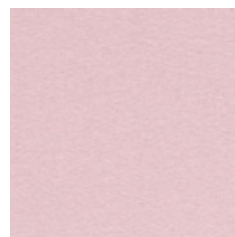
681



541



451



601



WIDHT/ ANCHO/ LARGEUR: 140cm.
WEIHT/ PESO/ POID: 580gr/m2

Designer:

Patricia Urquiola.

Composition:

96% new wool, 4% nylon.

Lightfastness:

5 - 6 ISO 105-B02.

Abrasion:

45.000 Martindale EN ISO 12947.

Resistance to pilling:

3 - 4, EN ISO 12945.

Fire test:

EN 1021-1/2 • DIN 4102 B2 • NF D 60 013 •
UNI 9175 1M • US Cal. Bull. 117-2013 • NFPA
260 • IMO A.652 (16).

*Batch to batch variations may occur within commercial tolerances.

Diseñador:

Patricia Urquiola.

Composición:

96% lana virgen, 4% nylon.

Solidez a la luz:

5 - 6 ISO 105-B02.

Abrasión:

45.000 Martindale EN ISO 12947.

Resistencia a la formación de pilling:

3 - 4, EN ISO 12945.

Test de resistencia al fuego:

EN 1021-1/2 • BS 5852, ignition source 2 - 3 •
DIN 4102 B2 • Önorm B1/Q1 • NF D 60 013 •
Italian Class 1|M • US Cal. Tech. Bull. 117, Sec.
E • IMO A. 652(16).

*De tintada a tintada se pueden producir variaciones tolerables de color.

Créateur:

Patricia Urquiola.

Composition:

96% laine, 4% nylon.

Solidité à la lumière:

5 - 6 ISO 105-B02.

Abrasion:

45.000 Martindale EN ISO 12947.

Résistance au pilling:

3 - 4, EN ISO 12945.

Résistance au feu:

EN 1021-1/2 • BS 5852, ignition source 2 - 3 •
DIN 4102 B2 • Önorm B1/Q1 • NF D 60 013 •
Italian Class 1|M • US Cal. Tech. Bull. 117, Sec.
E • IMO A. 652(16).

*Des variations tolérables de coloris d'un bain à un autre peuvent se manifester.

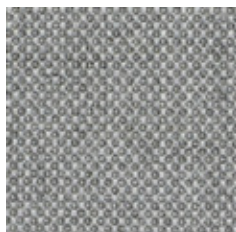


C6 – FIORD

kvadrat



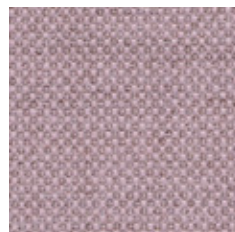
191



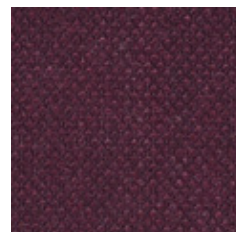
151



121



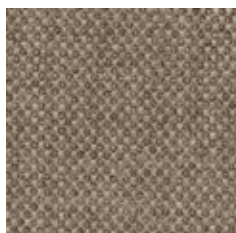
551



591



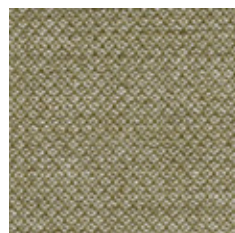
371



271



251



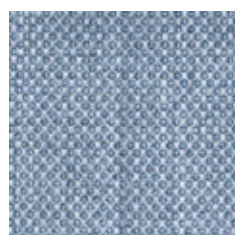
951



961



451



751



771



WIDHT/ ANCHO/ LARGEUR: 140cm.
WEIHT/ PESO/ POID: 500gr/m2

Designer:

Louise Sigvardt & Tone Barnung.

Composition:

92% new wool, 8% nylon.

Lightfastness:

5 - 6 ISO 105-B02.

Abrasion:

60.000 Martindale EN ISO 12947.

Resistance to pilling:

4 - 5, EN ISO 12945.

Fire test: BS 5852 part 1 • DIN 4102 B2 • EN 1021-1/2 • IMO FTP Code 2010 Part 8 • NF D 60 013 • UNI 9175 1IM • US Cal. Bull. 117-2013.

Environment:

Complies with EU ecolabel "The Flower".

*Batch to catch variations may occur within commercial tolerances.

Diseñador:

Louise Sigvardt & Tone Barnung.

Composición:

92% lana virgen, 8% nylon.

Solidez a la luz:

5 - 6 ISO 105-B02.

Abrasión:

60.000 Martindale EN ISO 12947.

Resistencia a la formación de pilling:

4 - 5, EN ISO 12945.

Test de resistencia al fuego:

BS 5852 part 1 • DIN 4102 B2 • EN 1021-1/2 • IMO FTP Code 2010 Part 8 • NF D 60 013 • UNI 9175 1IM • US Cal. Bull. 117-2013.

Medio ambiente:

Cumple con la ecolabel de la UE "The Flower".

*De tintada a tintada se pueden producir variaciones tolerables de color.

Créateur:

Louise Sigvardt & Tone Barnung.

Composition:

92% laine, 8% nylon.

Solidité à la lumière:

5 - 6 ISO 105-B02

Abrasion:

60.000 Martindale EN ISO 12947.

Résistance au pilling:

4 - 5, EN ISO 12945.

Résistance au feu:

BS 5852 part 1 • DIN 4102 B2 • EN 1021-1/2 • IMO FTP Code 2010 Part 8 • NF D 60 013 • UNI 9175 1IM • US Cal. Bull. 117-2013.

Environnement:

UE ecolabel "The Flower".

*Des variations tolérables de coloris d'un bain à un autre peuvent se manifester.



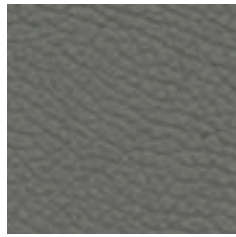
C10 – PIEL



207



219



208



209



204



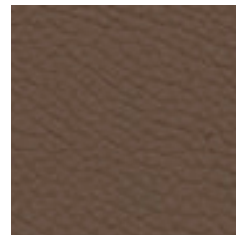
224



201



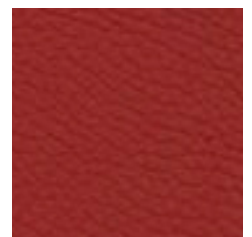
214



216



203



218

Maintenance: Wash with neutral soap and water or with a cleaning product for leather.

Mantenimiento: La limpieza de la piel debe hacerse con agua y jabón neutro, o productos aptos para la piel.

Nettoyage: Le nettoyage de la peau doit se faire avec du savont neutre et de l'eau, ou avec des produits pour la peau.

Composition:

Cow leather.

Light fastness:

≥4/5, UNI EN ISO 105B02.

Fastness to rubbing:

Wet ≥4 (150 cycles). Dry ≥4 (500 cycles). Perspiration ≥4 (80 cycles), UNI EN ISO 11640: 1998 - 11641 (pH8).

Tear strength:

>20N, EN ISO 3377-1.

Determination of PH:

>3,5N, EN ISO 4045.

Adhesion of the finish:

>2, UNI EN ISO 11644.

Determination of dry flex resistance:

Without damage, UNI EN ISO 5402.

Fire resistance:

Ignition source 0 (cigarette), BS 5852-1979.

Ignition source 1 (match), BS EN 1021-1-2:2006.

Thickness:

0,9 - 1,1mm.

Average surface:

4,5m².

Composición:

Piel bovina.

Solidez a la luz:

≥4/5, UNI EN ISO 105B02.

Resistencia al rozamiento:

Húmedo ≥4 (150 ciclos). Seco ≥4 (500 ciclos). En sudor ≥4 (80 ciclos), UNI EN ISO 11640: 1998 - 11641 (pH8).

Resistencia a los desgarros:

>20N, EN ISO 3377-1.

PH del extracto acuoso:

>3,5N, EN ISO 4045.

Adhesión del acabado en seco:

>2, UNI EN ISO 11644.

Resistencia a la flexión en seco:

Sin daño, UNI EN ISO 5402.

Resistencia al fuego:

Fuente de ignición 0 (cigarrillo), BS 5852-1979.

Fuente de ignición 1 (cerilla), BS EN 1021-1-2:2006.

Espesor:

0,9 - 1,1mm.

Superficie media:

4,5m².

Composition:

Peau de bovin.

Solidité à la lumière:

≥4/5, UNI EN ISO 105B02.

Résistance aux frottements:

Humide ≥4 (250 cycles). Sec ≥4 (1000 cycles). Transpiration ≥4 (80 cycles), UNI EN ISO 11640: 1998 - 11641 (pH8).

Résistance à la déchirure:

>20N, EN ISO 3377-1.

Détermination du PH:

>3,5N, EN ISO 4045.

Adhérence de la finition:

≥2, UNI EN ISO 11644.

Résistance à la flexion:

Without damage, UNI EN ISO 5402.

Résistance au feu:

Source d'inflammation 0 (cigarette), BS 5852-1979. ou

source d'inflammation 1 (match), BS EN 1021-1-2:2006.

Épaisseur:

0,9 - 1,1mm.

Average surface:

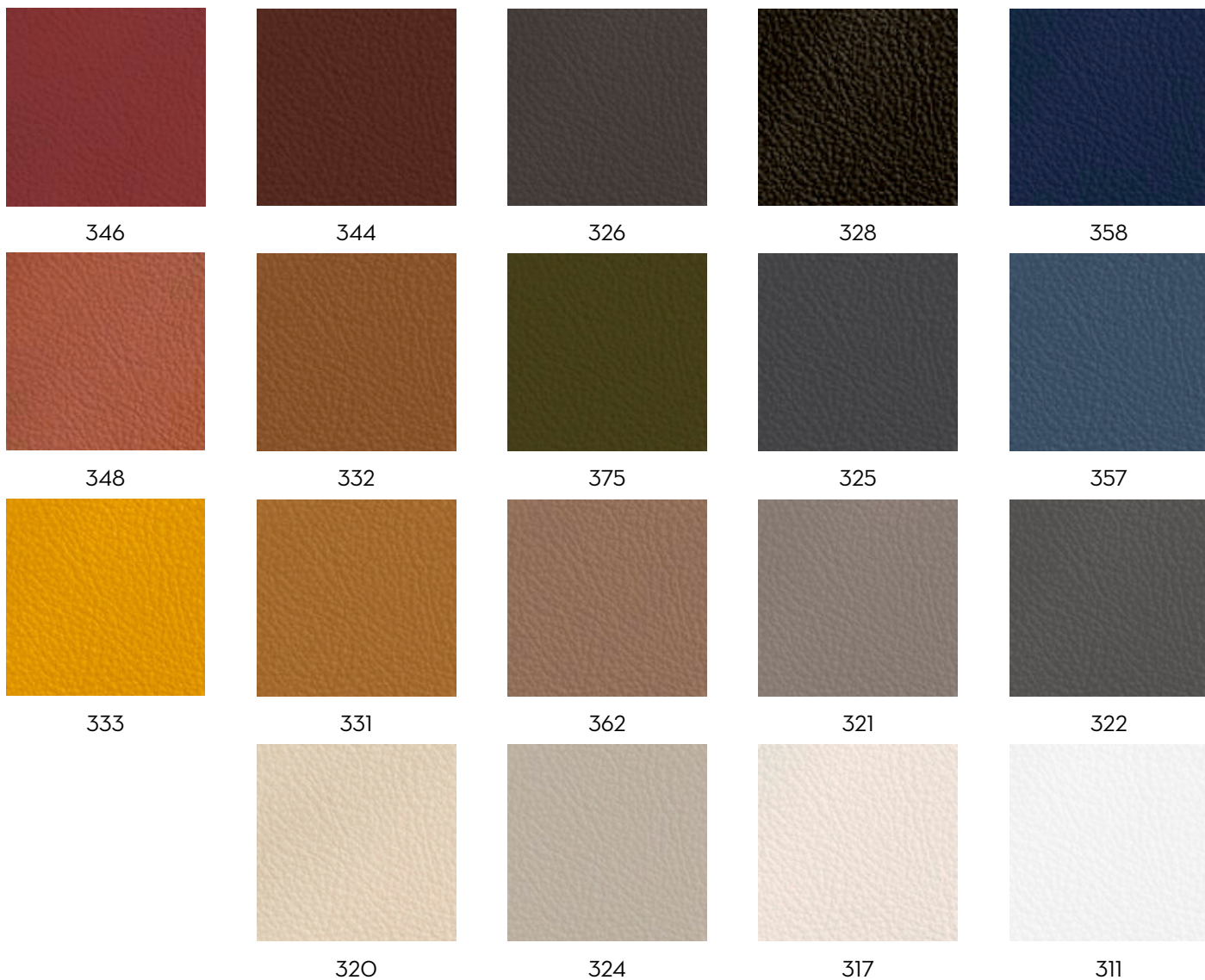
4,5m².

*Batch to batch variations may occur within commercial tolerances.

*De tintada a tintada se pueden producir variaciones tolerables de color.

*Des variations tolérables de coloris d'un bain à un autre peuvent se manifester.

C11 – PIEL



Maintenance: Wash with neutral soap and water or with a cleaning product for leather.

Mantenimiento: La limpieza de la piel debe hacerse con agua y jabón neutro, o productos aptos para la piel.

Nettoyage: Le nettoyage de la peau doit se faire avec du savon neutre et de l'eau, ou avec des produits pour la peau.

Composition:

Cow leather.

Light fastness:

≥5, UNI EN ISO 105B02.

Fastness to rubbing:

Wet ≥4 (150 cycles). Dry ≥4 (500 cycles). Perspiration ≥4 (80 cycles), UNI EN ISO 11640 - 11641.

Tear strength:

≥20N, EN ISO 3377-1.

Determination of PH:

≥3,5≤0,7 EN ISO 4045.

Adhesion of the finish:

≥2,5N / 10mm, UNI EN ISO 11644.

Determination of dry flex resistance:

>50.000 ciclos, UNI EN ISO 5402-1.

Fire resistance:

Ignition source 0 (cigarette), ignition source 1 (match), BS 5852-1:79.

Thickness:

0,9 - 1,1mm.

Average surface:

4,8 - 5,0m².

Composición:

Piel bovina.

Solidez a la luz:

≥5, UNI EN ISO 105B02.

Resistencia al rozamiento:

Húmedo ≥4 (150 ciclos). Seco ≥4 (500 ciclos). En sudor ≥4 (80 ciclos), UNI EN ISO 11640 - 11641.

Resistencia a los desgarros:

≥20N, EN ISO 3377-1.

PH del extracto acuoso:

≥3,5≤0,7 EN ISO 4045.

Adhesión del acabado en seco:

≥2,5N / 10mm, UNI EN ISO 11644.

Resistencia a la flexión en seco:

>50.000 ciclos, UNI EN ISO 5402-1.

Resistencia al fuego:

Fuente de ignición 0 (cigarrillo), fuente de ignición 1 (cerilla), BS 5852-1:79.

Espesor:

0,9 - 1,1mm.

Superficie media:

4,8 - 5,0m².

Composition:

Peau de bovin.

Solidité à la lumière:

≥5, UNI EN ISO 105B02.

Résistance aux frottements:

Humide ≥4 (250 cycles). Sec ≥4 (1000 cycles). Transpiration ≥4 (80 cycles), UNI EN ISO 11640 - 11641.

Résistance à la déchirure:

≥20N, EN ISO 3377-1.

Détermination du PH:

≥3,5≤0,7 EN ISO 4045.

Adhérence de la finition:

≥2,5N / 10mm, UNI EN ISO 11644.

Résistance à la flexion:

>50.000 ciclos, UNI EN ISO 5402-1.

Résistance au feu:

Source d'inflammation 0 (cigarette), ou source d'inflammation 1 (match), BS 5852-1:79.

Épaisseur:

0,9 - 1,1mm.

Average surface:

4,8 - 5,0m².

*Batch to batch variations may occur within commercial tolerances.

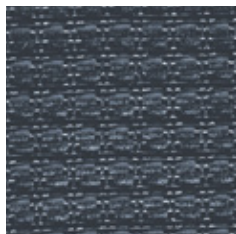
*De tintada a tintada se pueden producir variaciones tolerables de color.

*Des variations tolérables de coloris d'un bain à un autre peuvent se manifester.

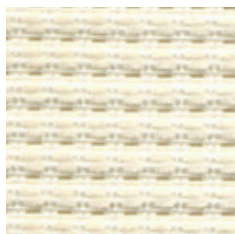
MESH



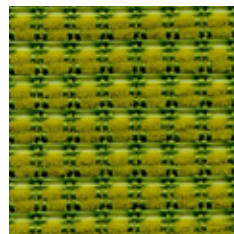
Black



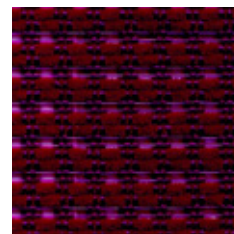
Grey



White



Green



Lilac



Composition:

55% PL - 45% PA

Light fastness:

(Blue scale) - Xenotest -
UNI EN ISO 105-B02

Tolerance from 5 to 8 - Declared 6

Abrasion resistance (rubs):

Martindale - UNI EN ISO 12947-2

>100.000 - Tolerance +-10%

Flammability:

EN 1021/1

*Flammability performance is dependent on foam and glue used.

*Batch to batch variations may occur within commercial tolerances.

Composición:

55% PL - 45% PA

Solidez a la luz:

(Escala de azules) - Xenotest -
UNI EN ISO 105-B02

Tolerancia de 5 a 8 - Admitida a 6

Resistencia a la abrasión:

Martindale - UNI EN ISO 12947-2

> 100.000 ciclos - Tolerancia +-10%

Inflamabilidad:

UNE EN 1021/1

*Condiciones ignífugas dependientes del tipo de foam y cola utilizados.

*De tintada a tintada se pueden producir variaciones tolerables de color.

Composition:

55% PL - 45% PA

Solidité à la lumière:

(Échelle des bleu) - Xenotest -
UNI EN ISO 105-B02

Tolérance de 5 à 8 - Déclaré 6

Résistance à l'abrasion (tours):

Martindale UNI EN ISO 12947-2

>100.000 cycles - Tolérance +-10%

Inflamabilité:

UNE EN 1021/1

*La réaction au feu dépend de la mousse et de la colle utilisées.

*Des variations tolérables de coloris d'un bain à un autre peuvent se manifester.

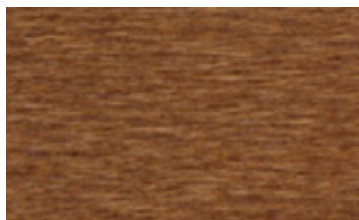
WOOD FINISHINGS

acabados de madera / bois finitions

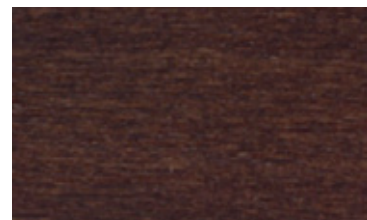
BEECH VENEER / CHAPA DE HAYA / PLACAGE HÊTRE



NATURAL / NATURAL / NATUREL



WALNUT STAIN / TINTE NOGAL / NOYER

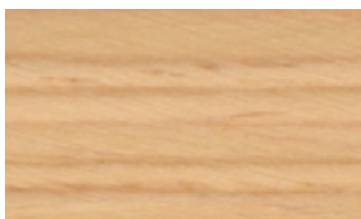


WENGE STAIN / TINTE WENGUÉ / WENGE

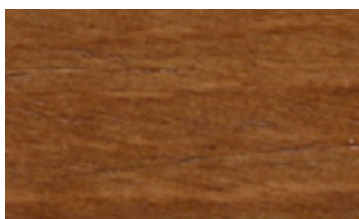


BLACK STAIN / TINTE NEGRO / NOIR

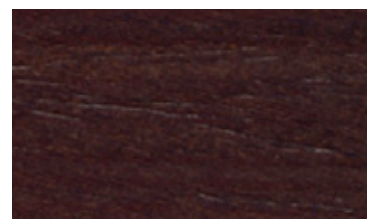
OAK VENEER / CHAPA DE ROBLE / PLACAGE CHÊNE



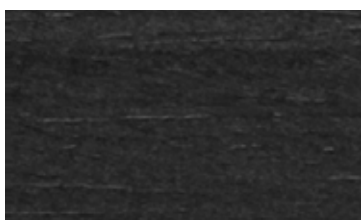
NATURAL / NATURAL / NATUREL



WALNUT STAIN / TINTE NOGAL / NOYER

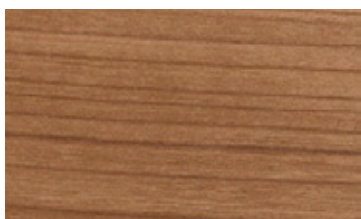


WENGE STAIN / TINTE WENGUÉ / WENGE



BLACK STAIN / TINTE NEGRO / NOIR

WALNUT VENEER / CHAPA DE NOGAL / PLACAGE NOYER



NATURAL / NATURAL / NATUREL

WOOD FINISHINGS

acabados de madera / bois finitions

LACQUERED MDF / MDF LACADO / MDF LAQUÉ



MUSTARD
NCS S2060-Y10R



MARINE GREEN
NCS S6020-B10G



NAVY BLUE
NCS S6020-R80B



CLAY ORANGE
NCS S3060-Y60R



TURQUOISE GREEN
NCS S3010-G20Y



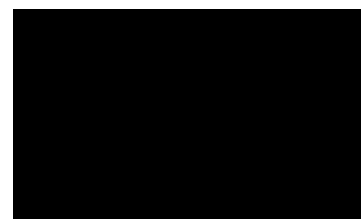
SKY BLUE
NCS S4010-R90B



ROSE
NCS S3020-Y80R



COFFEE BROWN
NCS S7005-Y80R



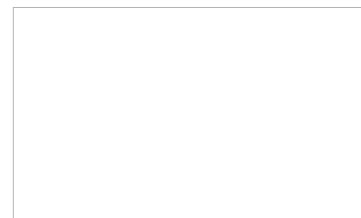
BLACK



LIGHT GREY
NCS S3502-R



STONE
NCS S3005-Y50R



WHITE

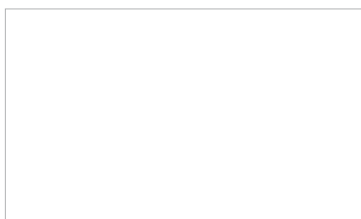
METAL FINISHINGS

acabados metálicos / finitions métalliques

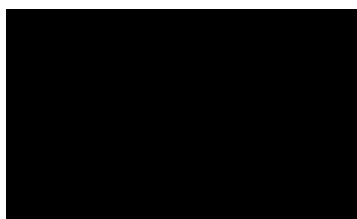


CHROME / CROMO / CHROMÉ

STANDARD COLOURS / COLORES ESTÁNDAR / COULEURS STANDARDS



WHITE / BLANCO / BLANC



BLACK / NEGRO / NOIR



ALUMINUM / ALUMINIO / ALUMINIUM
RAL 9006

OPTIONAL COLOURS / COLORES OPCIONALES / COULEURS OPTIONNELLES



MUSTARD
NCS S2060-Y10R



MARINE GREEN
NCS S6020-B10G



NAVY BLUE
RAL 5003



CLAY ORANGE
RAL 2001



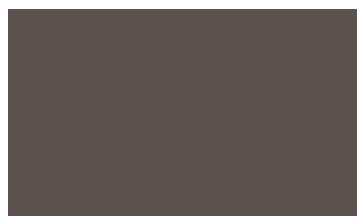
TURQUOISE GREEN
RAL 7033



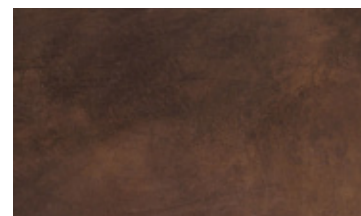
SKY BLUE
RAL 7001



ROSE
NCS S3020-Y8OR



COFFEE BROWN
RAL 8019



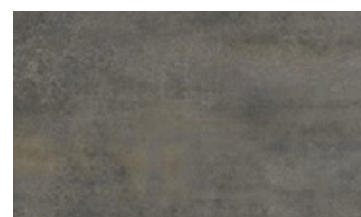
RUST BROWN



LIGHT GREY
RAL 7004



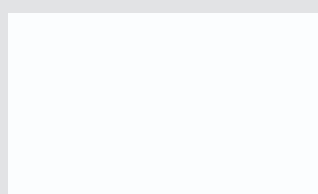
STONE
NCS S3005-Y5OR



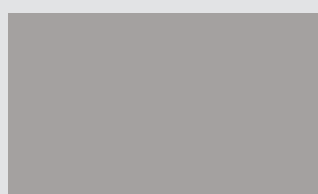
RUST GREY

PLASTIC COLOURS

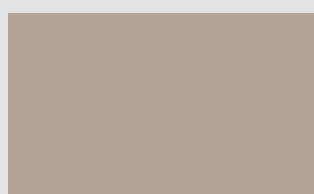
UNNIA



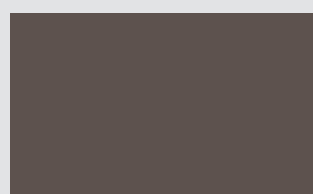
W01
RAL 9003



G42
NCS S3502-R



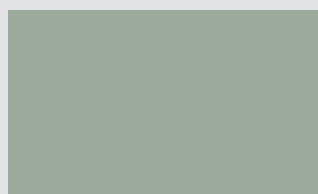
M82
NCS S3005-Y50R



M56
NCS S7005-Y80R



V12
NCS S3060-G70Y



V16
NCS S3010-G20Y



V18
NCS S7010-B90G



B40
NCS S6020-B10G



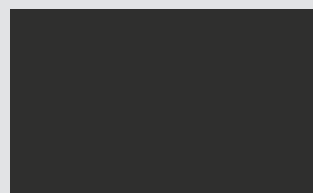
Y62
NCS S2060-Y10R



B44
NCS S4010-R90B



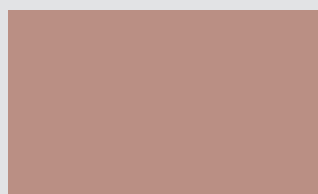
B36
NCS S6020-R80B



B00
NCS S8500N



O25
NCS S3060-Y60R



P70
NCS S3020-Y80R



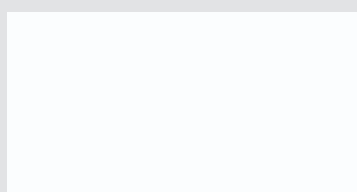
R34
NCS S2570-Y90R



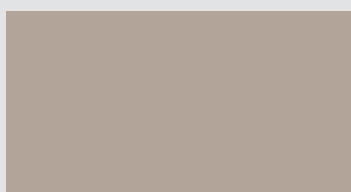
L31
NCS S6030-R30B

PLASTIC COLOURS

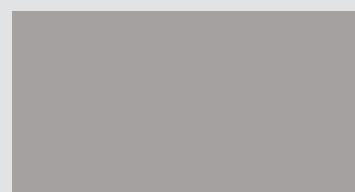
VARYA



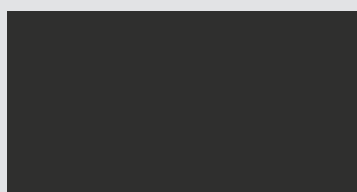
W01
RAL 9010



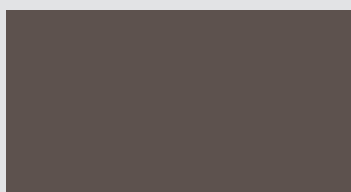
M82
NCS 3005-Y50R



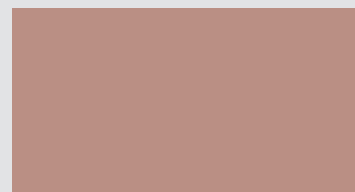
G42
NCS 3502-R



B00
NCS 8500N



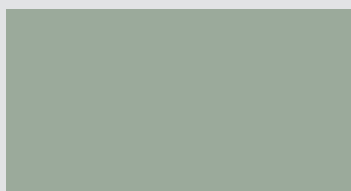
M56
NCS 7005-Y80R



P70
NCS 3020-Y80R



B44
NCS 4010-R90B



V16
NCS 3010-G20Y



O25
NCS 3060-Y60R



B36
NCS 6020-R80B



B40
NCS 6020-B10G



Y62
NCS 2060-Y10R