

Frigerio

LEATHERS COLLECTION

category / **A**

category / **B**

category / **B PLUS**

Frigerio

LEATHER COLLECTION / INDEX



category / A >



category / B >



category / B PLUS >

THE COLOURS ON THE SCREEN, FOR WELL KNOWN TECHNICAL REASONS, ARE INDICATIVE ONLY AND MAY DIFFER FROM THE ACTUAL FINISH.

CATEGORY
A

MIURA
FABRIC SCALE 1:1

PELLE MIURA MASTROTECH
MANUTENZIONE

Per la normale pulizia si può procedere passando sul capo da pulire, senza strofinare, un panno imbevuto di acqua tiepida e sapone neutro, risciacquare quindi con una spugna pulita e inumidita con acqua. Non utilizzare comuni detersivi o preparati vari per le pulizie. Non trattare la pelle con oli di varia natura. E' molto importante non esporre mai i manufatti in pelle alla luce diretta del sole. Per motivi tecnici non è possibile garantire la sequenza dei colori fra una partita e l'altra.

*MIURA MASTROTECH LEATHER
MAINTENANCE*

The cleaning can be carried out by using a cotton cloth, dampened with lukewarm water and neutral soap, rinse by using a clean wet sponge. Do not use common detergents or other products for cleaning. Do not use oils of any composition. It is also important not to leave the leather under the direct sunshine. Due to technical reasons it is not possible to guarantee the same colour for all the lots.

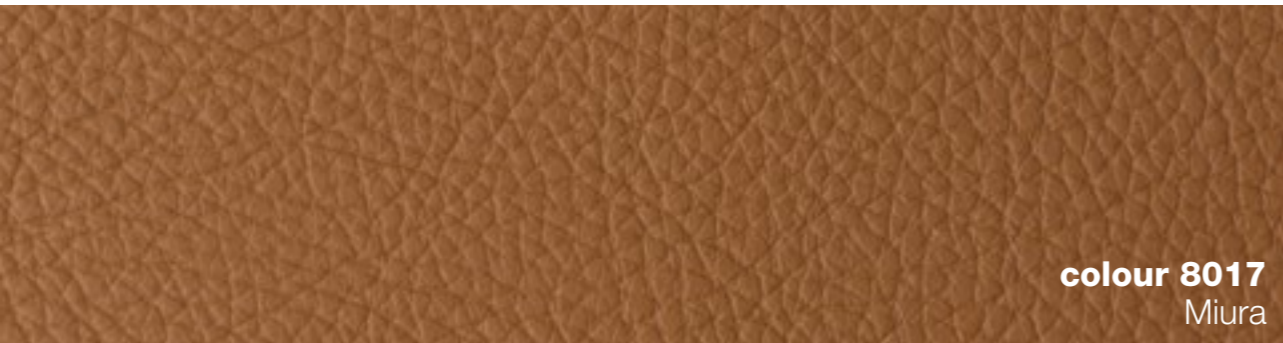
colour 8323
Miura



colour 8320
Miura

colour 8323
Miura

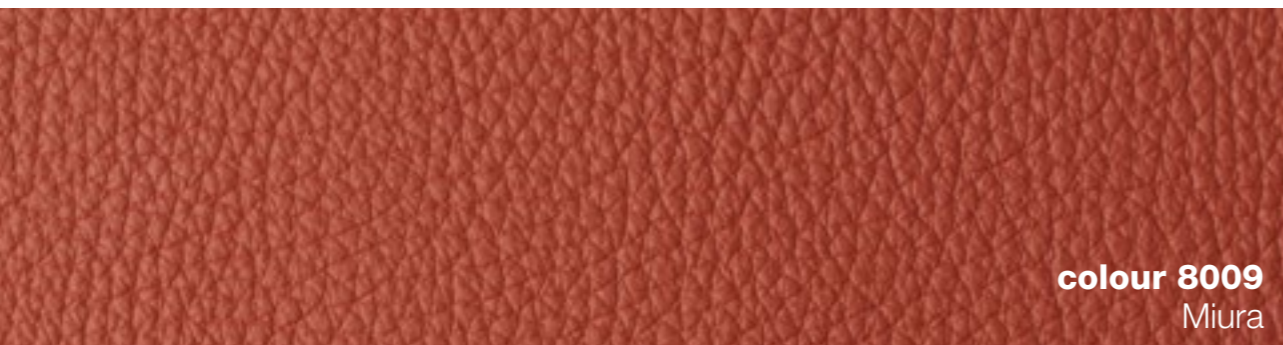
colour 8317
Miura



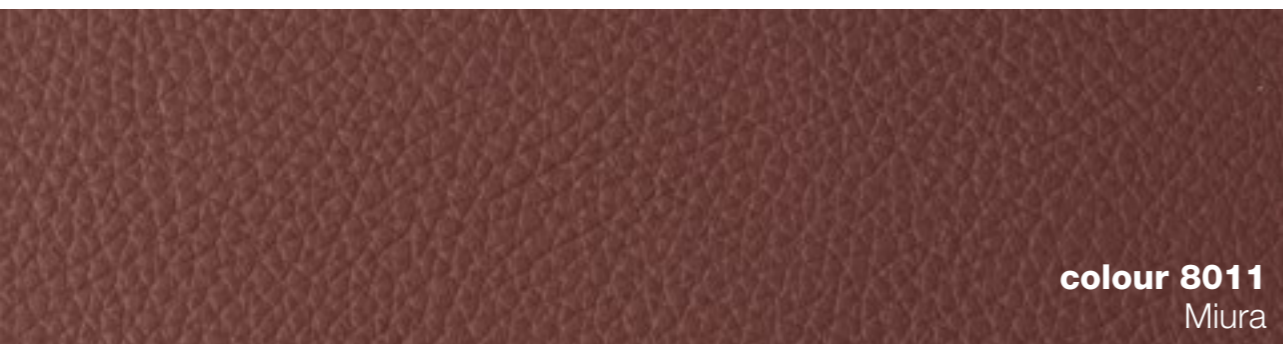
colour 8017
Miura



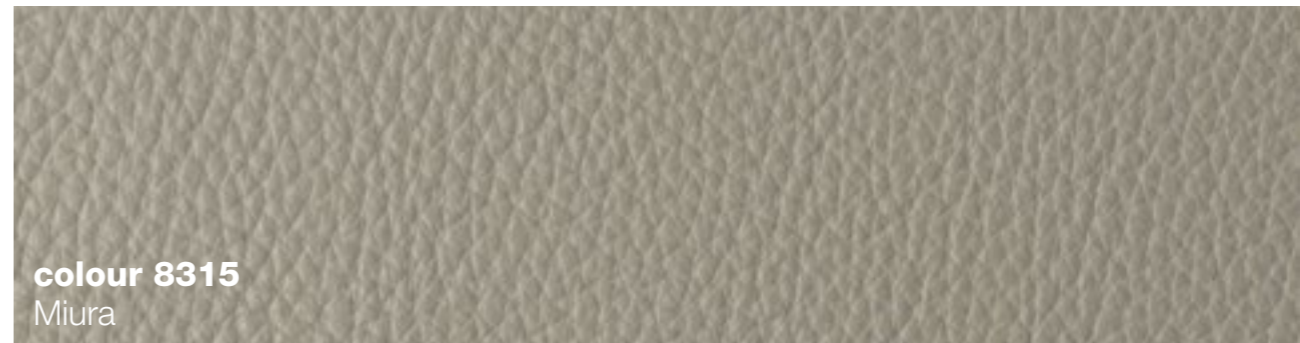
colour 8335
Miura



colour 8009
Miura



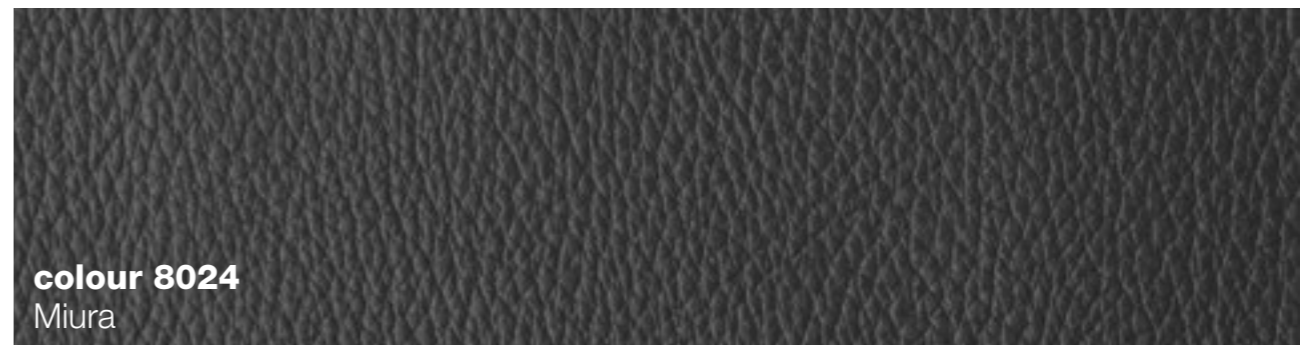
colour 8011
Miura



colour 8315
Miura



colour 8006
Miura



colour 8024
Miura



colour 8004
Miura



THE COLOURS ON THE SCREEN, FOR WELL KNOWN TECHNICAL REASONS, ARE INDICATIVE ONLY AND MAY DIFFER FROM THE ACTUAL FINISH.

CATEGORY

B

CARIBÙ

FABRIC SCALE 1:1

MANUTENZIONE DELLA PELLE CARIBU'

Per la normale pulizia di tutti i giorni si può procedere passando sul capo da pulire, senza strofinare, un panno imbevuto di latte scremato e di acqua in uguale misura. Se il capo da pulire è molto sporco si può procedere allo stesso modo usando una soluzione di sapone di Marsiglia diluito in acqua tiepida, indi strofinare leggermente con una spugna pulita e imbevuta di acqua. E' sufficiente pulire a fondo il capo una volta all'anno. Non utilizzare mai i comuni detersivi o preparati vari per le pulizie in genere. Non trattare la pelle con oli di varia natura. E' molto importante inoltre non esporre mai i manufatti in pelle alla luce diretta del sole. Per motivi tecnici non è possibile garantire la sequenza dei colori fra una partita e l'altra.

MAINTENANCE OF CARIBU' LEATHER

The daily cleaning can be carried out by using a cotton cloth, dampened with a solution of milk and water, without rubbing. If the leather is very dirty, you can use a solution of Marseille soap melted in lukewarm water, then rinse lightly with water. It is enough a deep cleansing once a year. Never use common detergents or other products for cleaning. Do not use oils of any composition. It is also important not to leave the leather under the direct sunshine. Due to technical reasons it is not possible to guarantee the same colour for all the lots.

colour 7870

Caribù

colour 7718

Caribù

colour 7851

Caribù

colour 7818

Caribù

colour 7859

Caribù

colour 7718

Caribù





colour 7835
Caribù



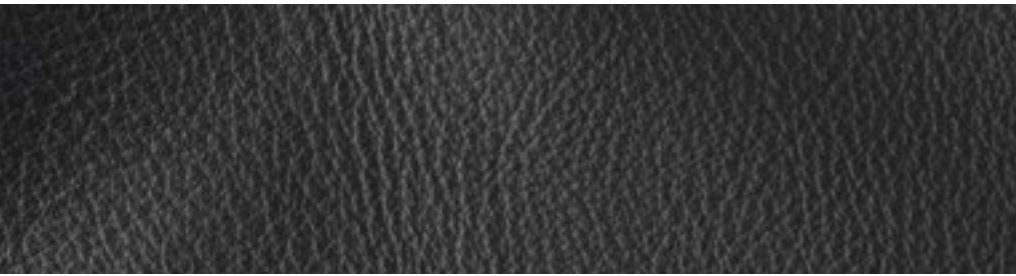
colour 7820
Caribù



colour 7238
Caribù



colour 7815
Caribù



colour 7800
Caribù



colour 7808
Caribù



colour 7860
Caribù



colour 7057
Caribù



colour 7803
Caribù



colour 7211
Caribù

THE COLOURS ON THE SCREEN, FOR WELL KNOWN TECHNICAL REASONS, ARE INDICATIVE ONLY AND MAY DIFFER FROM THE ACTUAL FINISH.

CATEGORY
B

CORDOBA

FABRIC SCALE 1:1

colour 901
Cordoba



MANUTENZIONE DELLA PELLE CORDOBA

Per la normale pulizia di tutti i giorni si può procedere passando sul capo da pulire, senza strofinare, un panno imbevuto di latte scremato e di acqua in uguale misura. Se il capo da pulire è molto sporco si può procedere allo stesso modo usando una soluzione di sapone di Marsiglia diluito in acqua tiepida, indi strofinare leggermente con una spugna pulita e imbevuta di acqua. E' sufficiente pulire a fondo il capo una volta all'anno. Non utilizzare mai i comuni detersivi o preparati vari per le pulizie in genere. Non trattare la pelle con oli di varia natura. E' molto importante inoltre non esporre mai i manufatti in pelle alla luce diretta del sole. Per motivi tecnici non è possibile garantire la sequenza dei colori fra una partita e l'altra.

MAINTENANCE OF CORDOBA LEATHER

The daily cleaning can be carried out by using a cotton cloth, dampened with a solution of milk and water, without rubbing. If the leather is very dirty, you can use a solution of Marseille soap melted in lukewarm water, then rinse lightly with water. It is enough a deep cleansing once a year. Never use common detergents or other products for cleaning. Do not use oils of any composition. It is also important not to leave the leather under the direct sunshine. Due to technical reasons it is not possible to guarantee the same colour for all the lots.

colour 919
Cordoba

colour 902
Cordoba

colour 924
Cordoba

colour 907
Cordoba

colour 918
Cordoba

colour 921
Cordoba

colour 915
Cordoba

THE COLOURS ON THE SCREEN, FOR WELL KNOWN TECHNICAL REASONS, ARE INDICATIVE ONLY AND MAY DIFFER FROM THE ACTUAL FINISH.

CATEGORY

B

ELEGANT

FABRIC SCALE 1:1

colour 2411
Elegant



MANUTENZIONE DELLA PELLE ELEGANT

Per la normale pulizia di tutti i giorni si può procedere passando sul capo da pulire, senza strofinare, un panno imbevuto di latte scremato e di acqua in uguale misura. Se il capo da pulire è molto sporco si può procedere allo stesso modo usando una soluzione di sapone di Marsiglia diluito in acqua tiepida, indi strofinare leggermente con una spugna pulita e imbevuta di acqua. E' sufficiente pulire a fondo il capo una volta all'anno. Non utilizzare mai i comuni detersivi o preparati vari per le pulizie in genere. Non trattare la pelle con oli di varia natura. E' molto importante inoltre non esporre mai i manufatti in pelle alla luce diretta del sole. Per motivi tecnici non è possibile garantire la sequenza dei colori fra una partita e l'altra.

MAINTENANCE OF ELEGANT LEATHER

The daily cleaning can be carried out by using a cotton cloth, dampened with a solution of milk and water, without rubbing. If the leather is very dirty, you can use a solution of Marseille soap melted in lukewarm water, then rinse lightly with water. It is enough a deep cleansing once a year. Never use common detergents or other products for cleaning. Do not use oils of any composition. It is also important not to leave the leather under the direct sunshine. Due to technical reasons it is not possible to guarantee the same colour for all the lots.

colour 2404
Elegant

colour 2401
Elegant

colour 2405
Elegant

colour 2410
Elegant

colour 2403
Elegant

colour 2402
Elegant

THE COLOURS ON THE SCREEN, FOR WELL KNOWN TECHNICAL REASONS, ARE INDICATIVE ONLY AND MAY DIFFER FROM THE ACTUAL FINISH.

CATEGORY
B

SIDECAR

FABRIC SCALE 1:1



colour 11
Sidecar



colour 10
Sidecar

colour 01
Sidecar

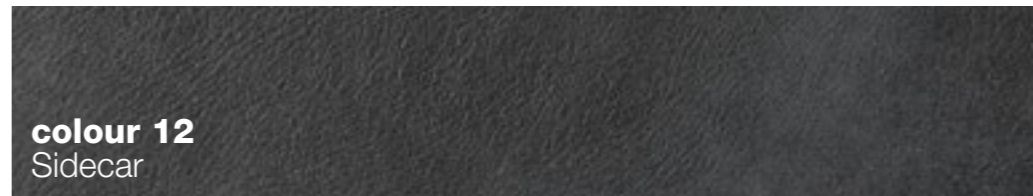
colour 06
Sidecar

colour 7
Sidecar

colour 04
Sidecar

colour 03
Sidecar

colour 12
Sidecar



THE COLOURS ON THE SCREEN, FOR WELL KNOWN TECHNICAL REASONS, ARE INDICATIVE ONLY AND MAY DIFFER FROM THE ACTUAL FINISH.

CATEGORY
B PLUS

ATLAS

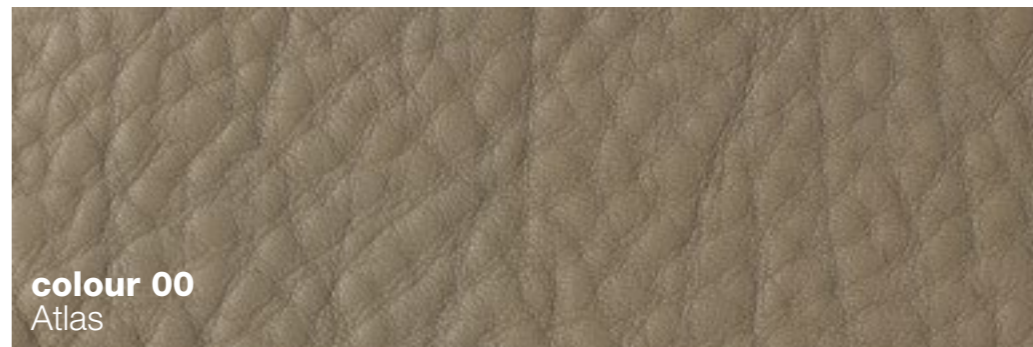
FABRIC SCALE 1:1



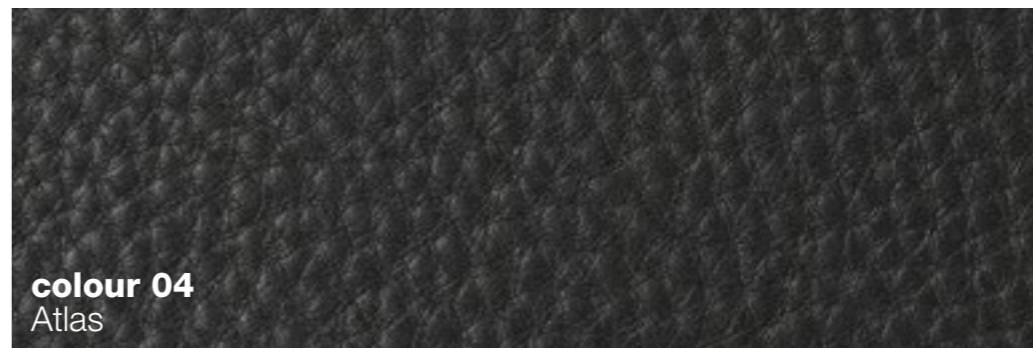
colour 01
Atlas



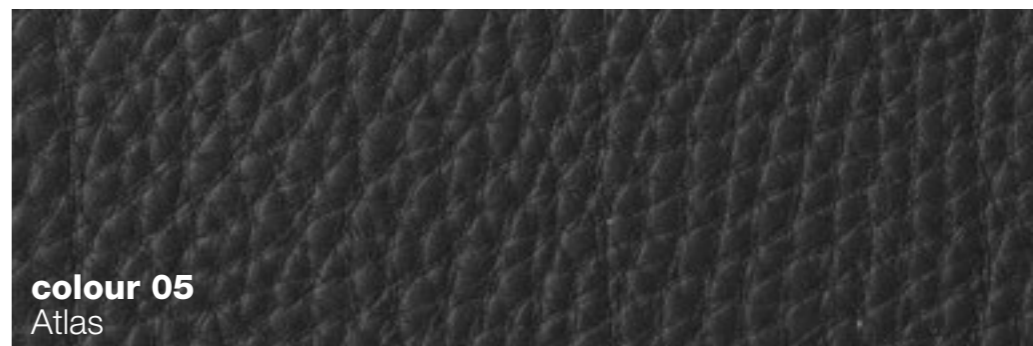
colour 02
Atlas



colour 00
Atlas



colour 04
Atlas



colour 05
Atlas

THE COLOURS ON THE SCREEN, FOR WELL KNOWN TECHNICAL REASONS, ARE INDICATIVE ONLY AND MAY DIFFER FROM THE ACTUAL FINISH.

CATEGORY
B PLUS

NUBUK

FABRIC SCALE 1:1

colour 2101
Nubuk



colour 2118
Nubuk

colour 2107
Nubuk

colour 2115
Nubuk

colour 2116
Nubuk

colour 2117
Nubuk

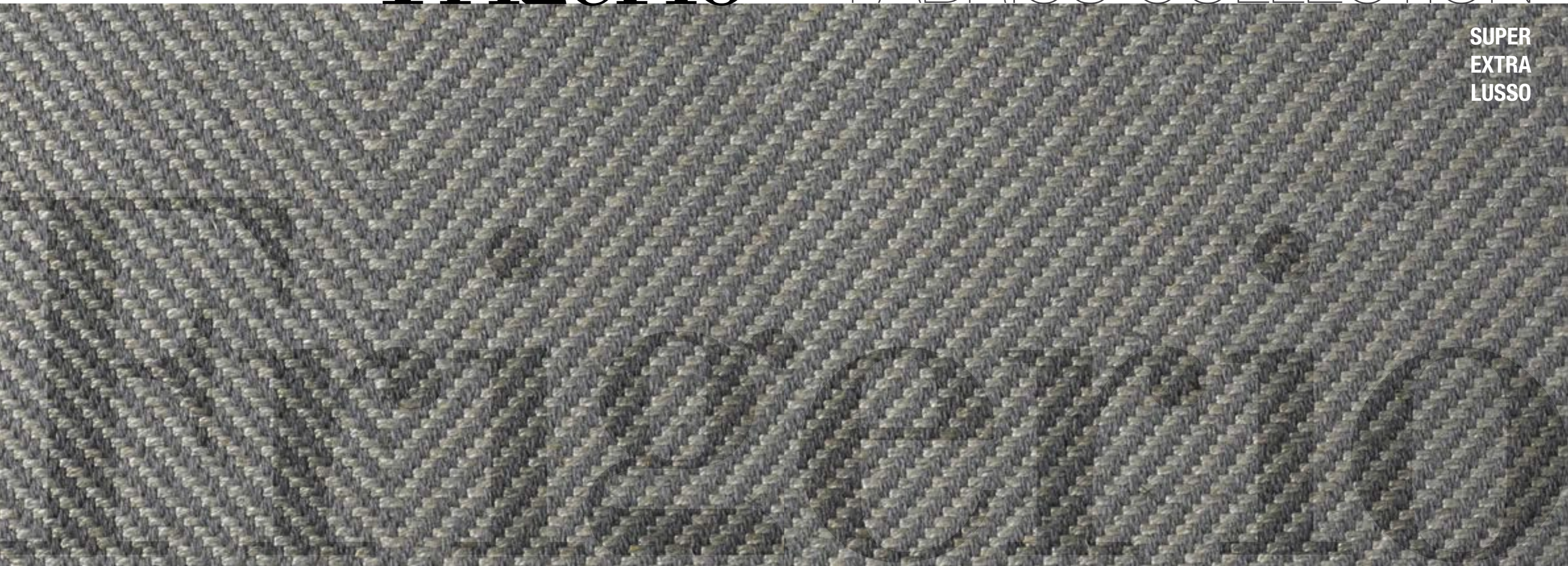
colour 2108
Nubuk

colour 2114
Nubuk

Frigerio

FABRICS COLLECTION

SUPER
EXTRA
LUSSO



INDEX

FABRICS COLLECTION



category / SUPER



category / EXTRA



category / LUSSO



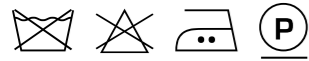
LAUNDRY CARE

FABRICS CATEGORY

SUPER

COMPOSITION **100% CO**
FABRIC WIDTH **140**
COLOUR FASTNESS TO LIGHT **4/5**
MARTINDALE **20.000 cycles**
PILLING **4**

MAINTENANCE



DRY CLEAN PERCHLOROETHYLENE.

CATEGORY
SUPER

INDIA

FABRIC SCALE 1:1

ATTENTION
This fabric has been
manufactured using
natural fibres.
Any slubs, impurities
and irregularities
are characteristic of
the yarn used and
enhance the special
nature of the fabric.

THE COLOURS ON
THE SCREEN, FOR
WELL KNOWN
TECHNICAL
REASONS, ARE
INDICATIVE ONLY
AND MAY DIFFER
FROM THE ACTUAL
FINISH.

colour 01
India



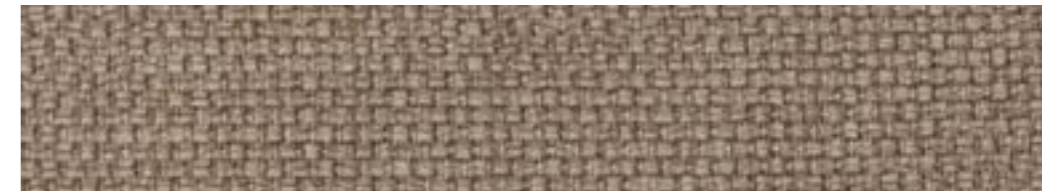
colour 03
India



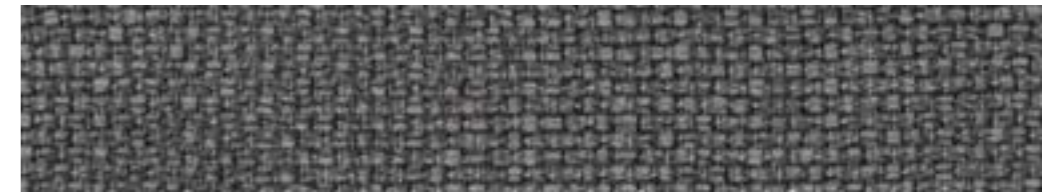
colour 06
India



colour 14
India



colour 16
India



colour 19
India



colour 20
India

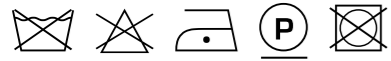


colour 07
India



COMPOSITION **85% CO - 15 VI**
FABRIC WIDTH **140**
COLOUR FASTNESS TO LIGHT **5**
MARTINDALE **25.000 cycles**
PILLING **4**

MAINTENANCE



DRY CLEAN PERCHLOROETHYLENE.

CATEGORY
SUPER

PASTELLO

FABRIC SCALE 1:1

ATTENTION
This fabric has been
manufactured using
natural fibres.
Any slubs, impurities
and irregularities
are characteristic of
the yarn used and
enhance the special
nature of the fabric.

THE COLOURS ON
THE SCREEN, FOR
WELL KNOWN
TECHNICAL
REASONS, ARE
INDICATIVE ONLY
AND MAY DIFFER
FROM THE ACTUAL
FINISH.

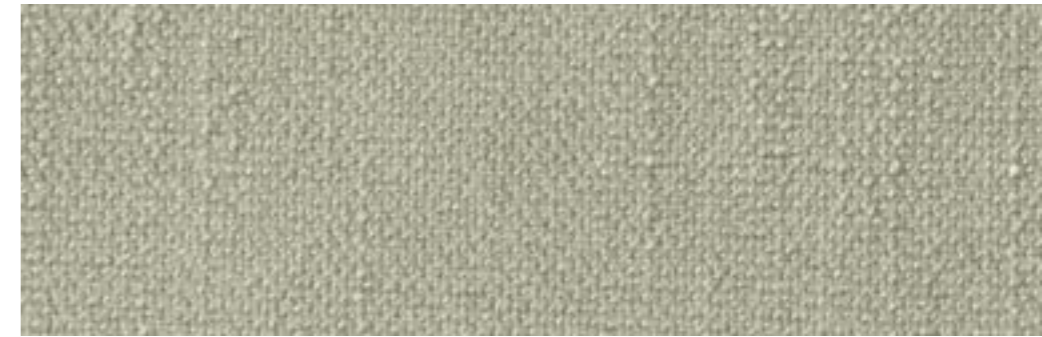
colour 03
Pastello



colour 02
Pastello

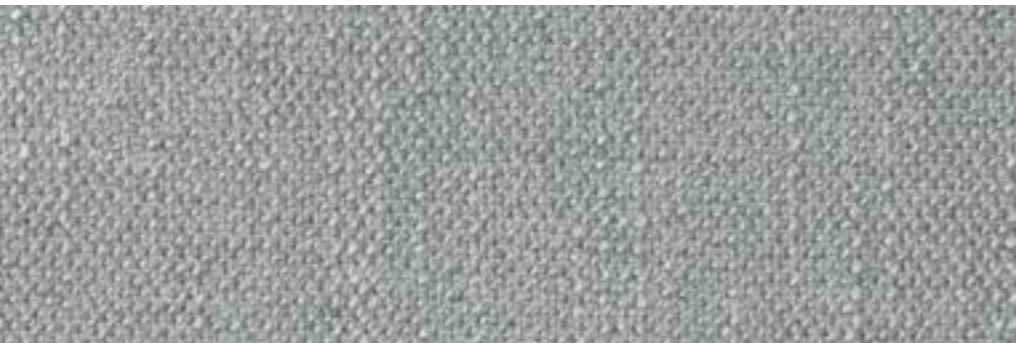


colour 04
Pastello

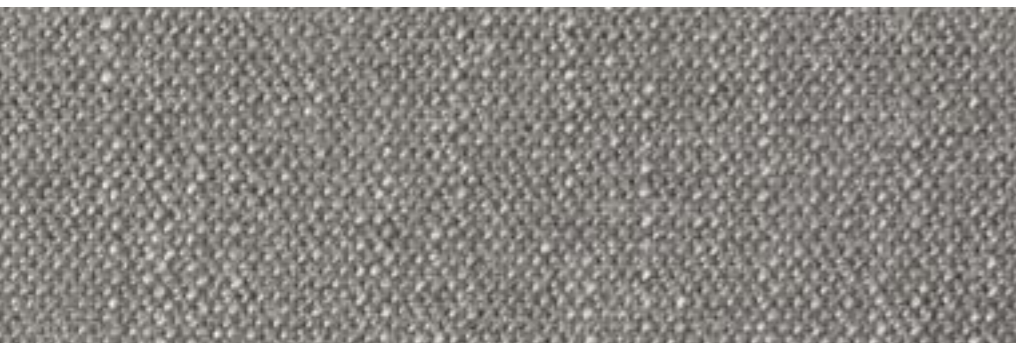


colour 05
Pastello

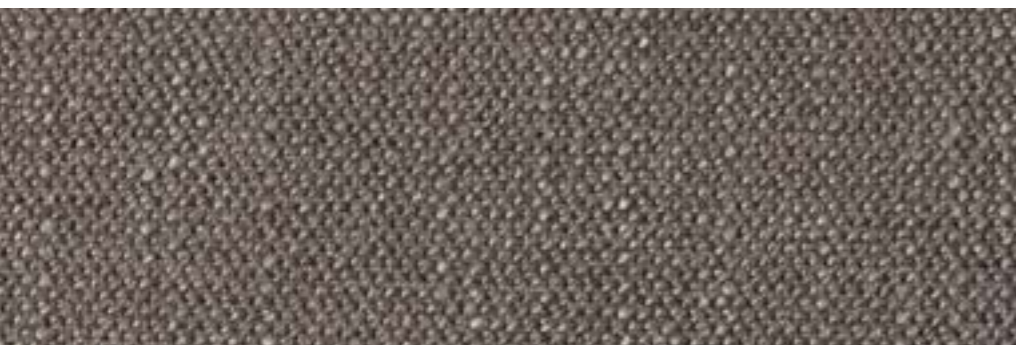




colour 06
Pastello



colour 17
Pastello



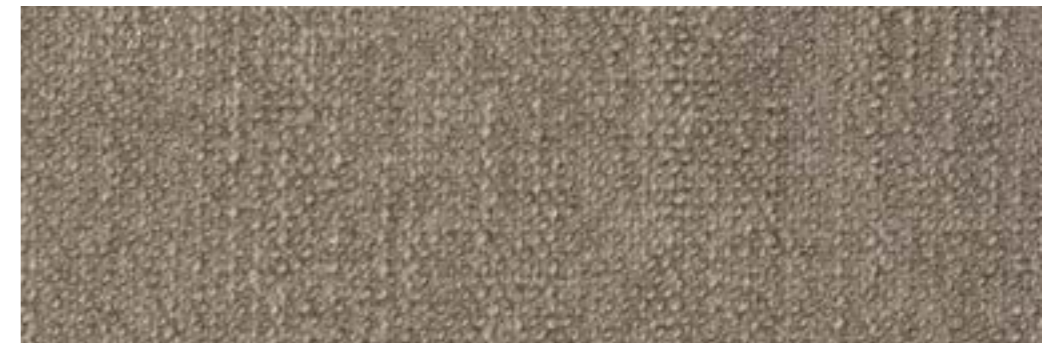
colour 07
Pastello



colour 11
Pastello

ATTENTION
This fabric has been
manufactured using
natural fibres.
Any slubs, impurities
and irregularities
are characteristic of
the yarn used and
enhance the special
nature of the fabric.

THE COLOURS ON
THE SCREEN, FOR
WELL KNOWN
TECHNICAL
REASONS, ARE
INDICATIVE ONLY
AND MAY DIFFER
FROM THE ACTUAL
FINISH.



colour 08
Pastello



colour 16
Pastello



colour 10
Pastello



colour 12
Pastello



FABRICS CATEGORY

EXTRA

COMPOSITION **100% PL**
FABRIC WIDTH **140**
COLOUR FASTNESS TO LIGHT **5**
MARTINDALE **92.000 cycles**
PILLING **4/5**

MAINTENANCE



IDROPELENTE

CATEGORY
EXTRA

ANTARES

FABRIC SCALE 1:1

ATTENTION
This fabric has been
manufactured using
natural fibres.
Any slubs, impurities
and irregularities
are characteristic of
the yarn used and
enhance the special
nature of the fabric.

THE COLOURS ON
THE SCREEN, FOR
WELL KNOWN
TECHNICAL
REASONS, ARE
INDICATIVE ONLY
AND MAY DIFFER
FROM THE ACTUAL
FINISH.

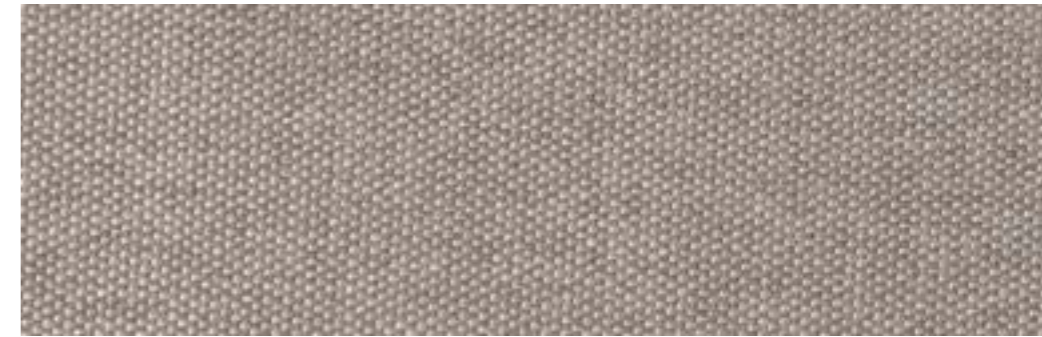
colour 01
Antares



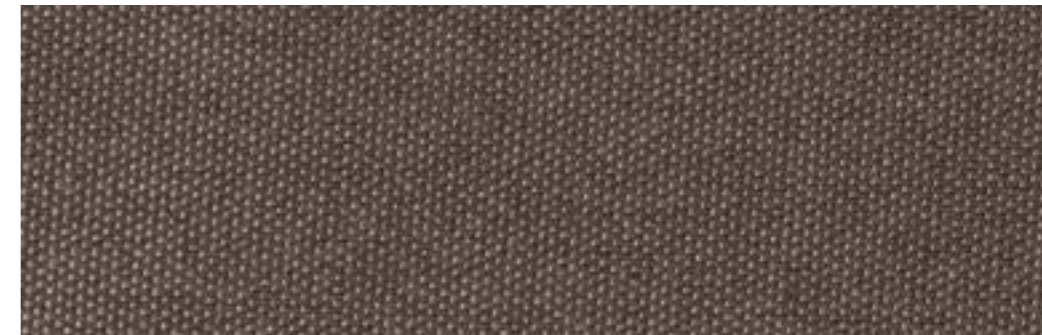
colour 18
Antares

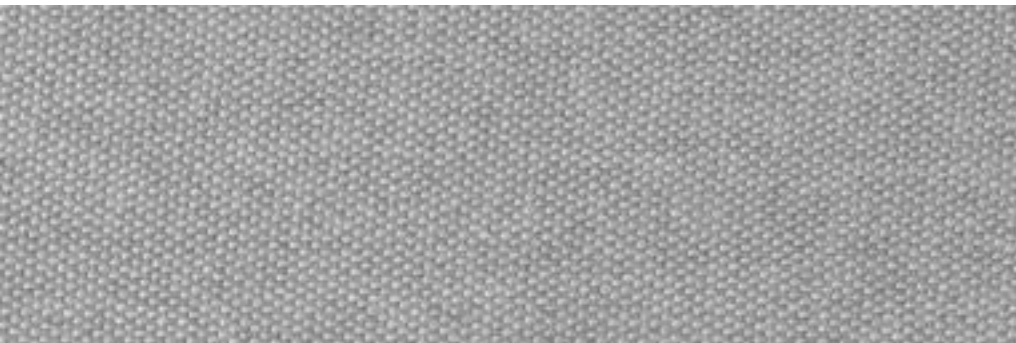


colour 03
Antares

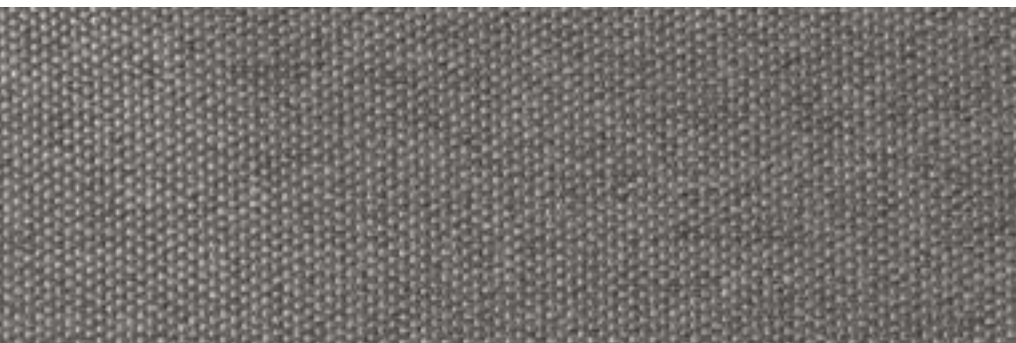


colour 05
Antares

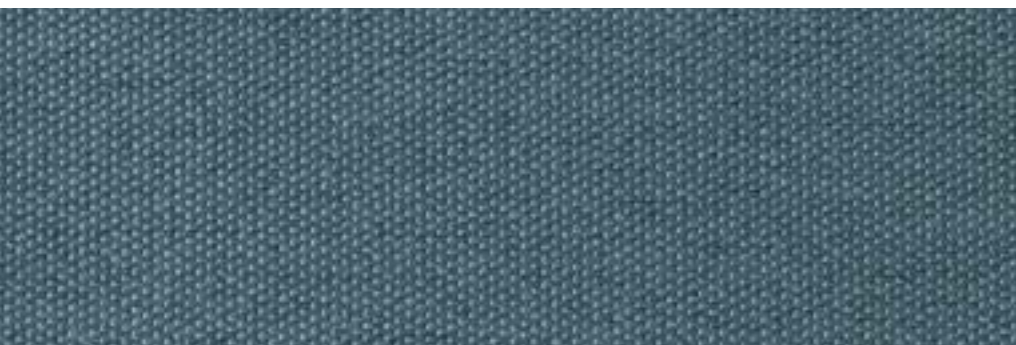




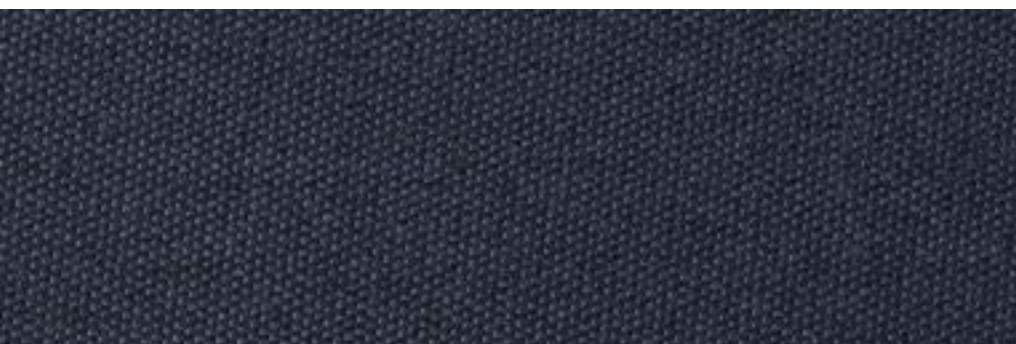
colour 14
Antares



colour 19
Antares



colour 17
Antares



colour 13
Antares

ATTENTION
This fabric has been
manufactured using
natural fibres.
Any slubs, impurities
and irregularities
are characteristic of
the yarn used and
enhance the special
nature of the fabric.

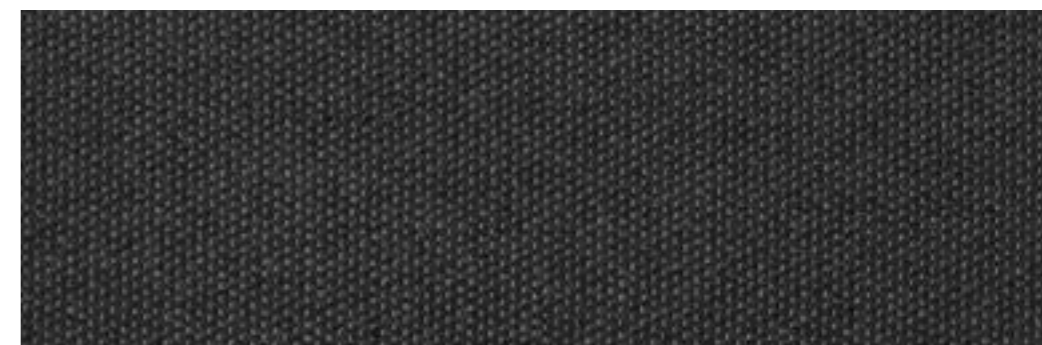
THE COLOURS ON
THE SCREEN, FOR
WELL KNOWN
TECHNICAL
REASONS, ARE
INDICATIVE ONLY
AND MAY DIFFER
FROM THE ACTUAL
FINISH.



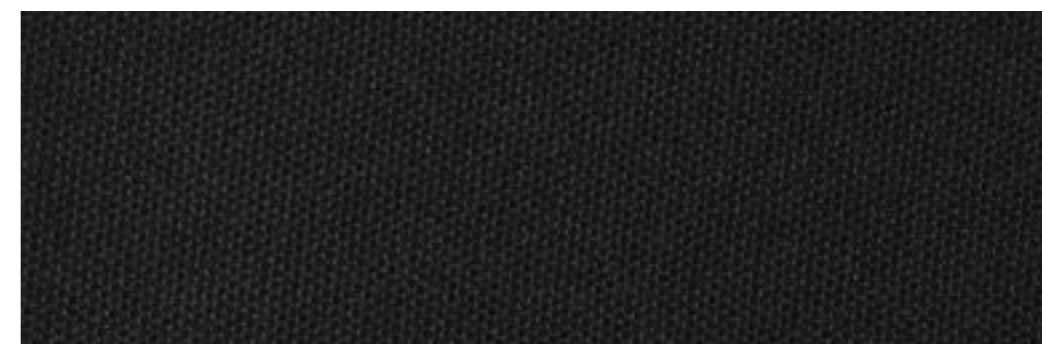
colour 04
Antares



colour 09
Antares



colour 15
Antares



colour 16
Antares



COMPOSITION **90% CO - 10%PL**
FABRIC WIDTH **140**
COLOUR FASTNESS TO LIGHT **5**
MARTINDALE **25.000 cycles**
PILLING **4**

MAINTENANCE



DRY CLEAN PERCHLOROETHYLENE.

CATEGORY
EXTRA

BRIXTON

FABRIC SCALE 1:1

ATTENTION
This fabric has been
manufactured using
natural fibres.
Any slubs, impurities
and irregularities
are characteristic of
the yarn used and
enhance the special
nature of the fabric.

THE COLOURS ON
THE SCREEN, FOR
WELL KNOWN
TECHNICAL
REASONS, ARE
INDICATIVE ONLY
AND MAY DIFFER
FROM THE ACTUAL
FINISH.

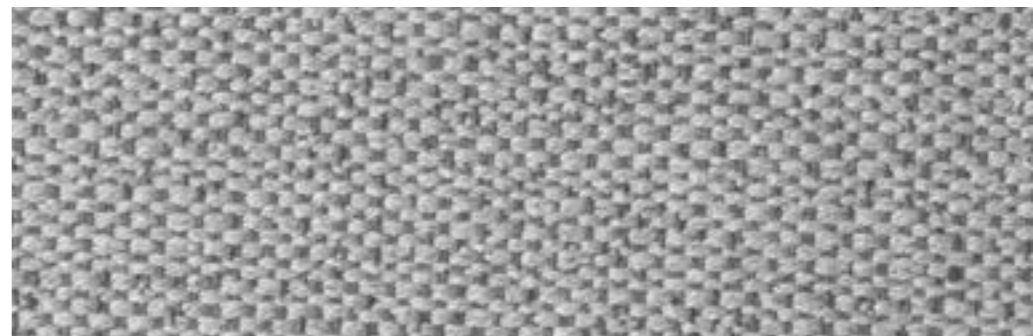
colour 100
Brixton



colour 102
Brixton



colour 115
Brixton



colour 101
Brixton





colour 104
Brixton



colour 105
Brixton



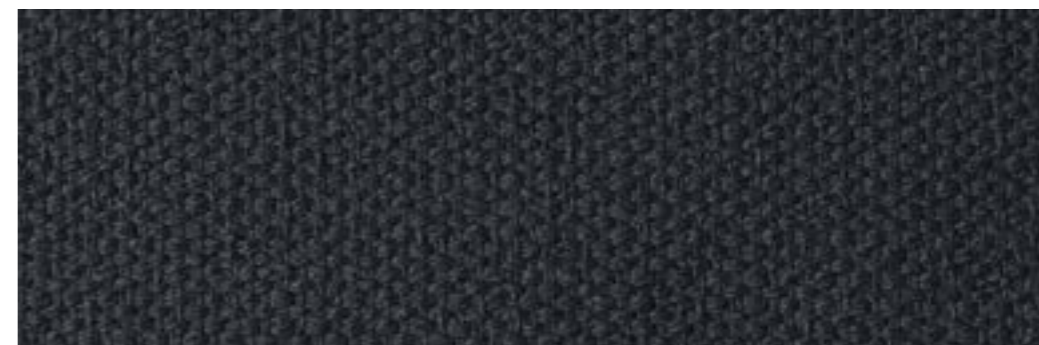
colour 106
Brixton

ATTENTION
This fabric has been
manufactured using
natural fibres.
Any slubs, impurities
and irregularities
are characteristic of
the yarn used and
enhance the special
nature of the fabric.

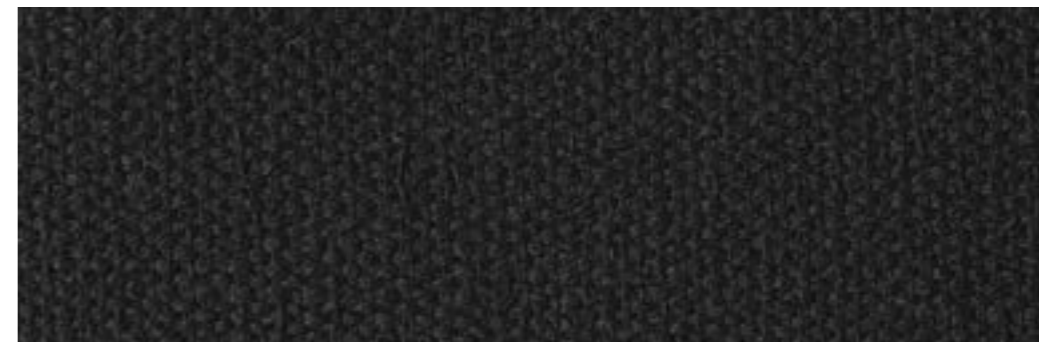
THE COLOURS ON
THE SCREEN, FOR
WELL KNOWN
TECHNICAL
REASONS, ARE
INDICATIVE ONLY
AND MAY DIFFER
FROM THE ACTUAL
FINISH.



colour 112
Brixton



colour 114
Brixton



colour 118
Brixton



COMPOSITION **55 LI% - 29% PC - 7% CO - 6%NY - 3%PL**

FABRIC WIDTH **140**

COLOUR FASTNESS TO LIGHT **4/5**

MARTINDALE **20.000 cycles**

PILLING **4**

MAINTENANCE



DRY CLEAN PERCHLOROETHYLENE.

CATEGORY
EXTRA

CURRY

FABRIC SCALE 1:1

ATTENTION

This fabric has been manufactured using natural fibres.

Any slubs, impurities and irregularities are characteristic of the yarn used and enhance the special nature of the fabric.

THE COLOURS ON THE SCREEN, FOR WELL KNOWN TECHNICAL REASONS, ARE INDICATIVE ONLY AND MAY DIFFER FROM THE ACTUAL FINISH.

colour 11
Curry



colour 13
Curry

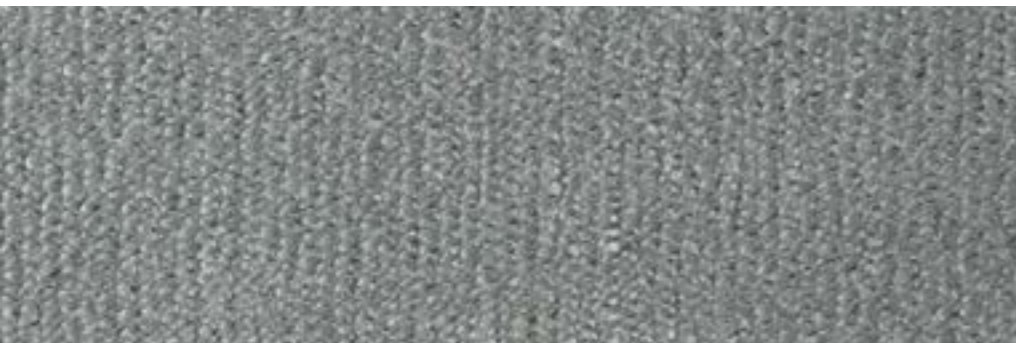


colour 12
Curry



colour 19
Curry





colour 21
Curry



colour 22
Curry



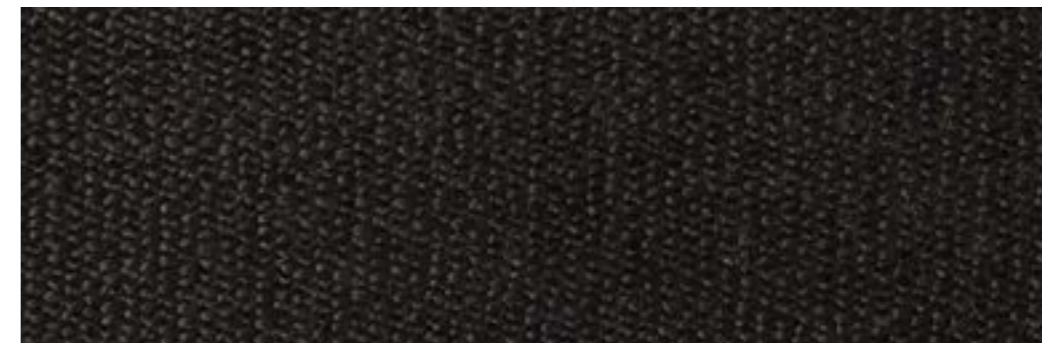
colour 04
Curry

ATTENTION
This fabric has been
manufactured using
natural fibres.
Any slubs, impurities
and irregularities
are characteristic of
the yarn used and
enhance the special
nature of the fabric.

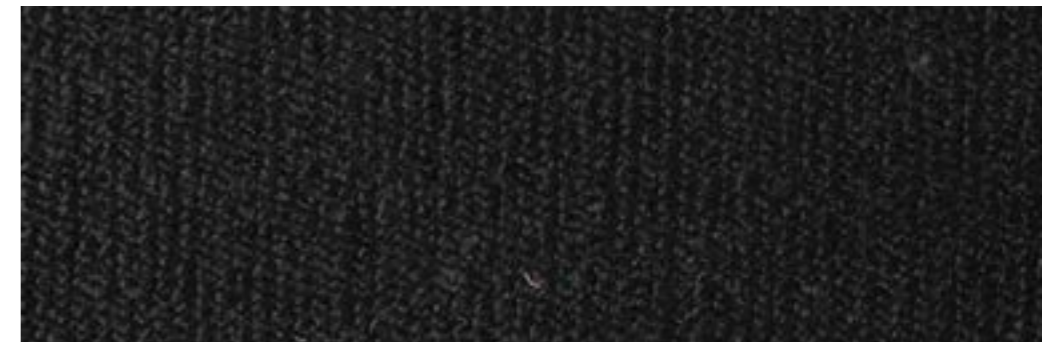
THE COLOURS ON
THE SCREEN, FOR
WELL KNOWN
TECHNICAL
REASONS, ARE
INDICATIVE ONLY
AND MAY DIFFER
FROM THE ACTUAL
FINISH.



colour 08
Curry



colour 14
Curry



colour 09
Curry



COMPOSITION **45% VI - 22% LI - 20% CO - 10% PC - 3% AF**

FABRIC WIDTH **140**

COLOUR FASTNESS TO LIGHT **4/5**

MARTINDALE **25.000 cycles**

PILLING **3**

MAINTENANCE



DRY CLEAN PERCHLOROETHYLENE.

CATEGORY

EXTRA

DREAM

FABRIC SCALE 1:1

ATTENTION

This fabric has been manufactured using natural fibres.

Any slubs, impurities and irregularities are characteristic of the yarn used and enhance the special nature of the fabric.

THE COLOURS ON THE SCREEN, FOR WELL KNOWN TECHNICAL REASONS, ARE INDICATIVE ONLY AND MAY DIFFER FROM THE ACTUAL FINISH.

colour 12
Dream



colour 1
Dream



colour 2
Dream



colour 43
Dream





colour 41
Dream



colour 32
Dream



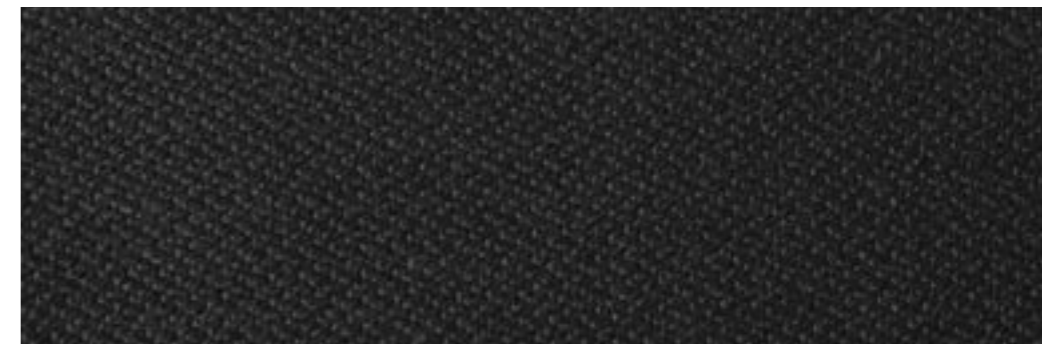
colour 42
Dream

ATTENTION
This fabric has been
manufactured using
natural fibres.
Any slubs, impurities
and irregularities
are characteristic of
the yarn used and
enhance the special
nature of the fabric.

THE COLOURS ON
THE SCREEN, FOR
WELL KNOWN
TECHNICAL
REASONS, ARE
INDICATIVE ONLY
AND MAY DIFFER
FROM THE ACTUAL
FINISH.



colour 31
Dream



colour 24
Dream



colour 5
Dream



COMPOSITION **48% VI - 24% LI - 17% CO - 11% PC**
FABRIC WIDTH **140**
COLOUR FASTNESS TO LIGHT **4/5**
MARTINDALE **20.000 cycles**
PILLING **3**

MAINTENANCE



DRY CLEAN PERCHLOROETHYLENE.

CATEGORY
EXTRA

DREAM

FABRIC SCALE 1:1

ATTENTION
This fabric has been manufactured using natural fibres. Any slubs, impurities and irregularities are characteristic of the yarn used and enhance the special nature of the fabric.

THE COLOURS ON THE SCREEN, FOR WELL KNOWN TECHNICAL REASONS, ARE INDICATIVE ONLY AND MAY DIFFER FROM THE ACTUAL FINISH.

colour 412
Dream



colour 401
Dream



colour 402
Dream



colour 443
Dream





colour 441
Dream



colour 432
Dream



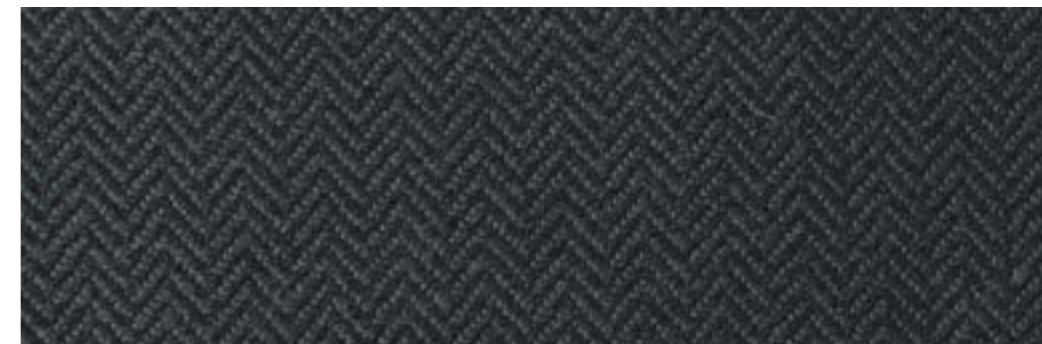
colour 442
Dream

ATTENTION
This fabric has been
manufactured using
natural fibres.
Any slubs, impurities
and irregularities
are characteristic of
the yarn used and
enhance the special
nature of the fabric.

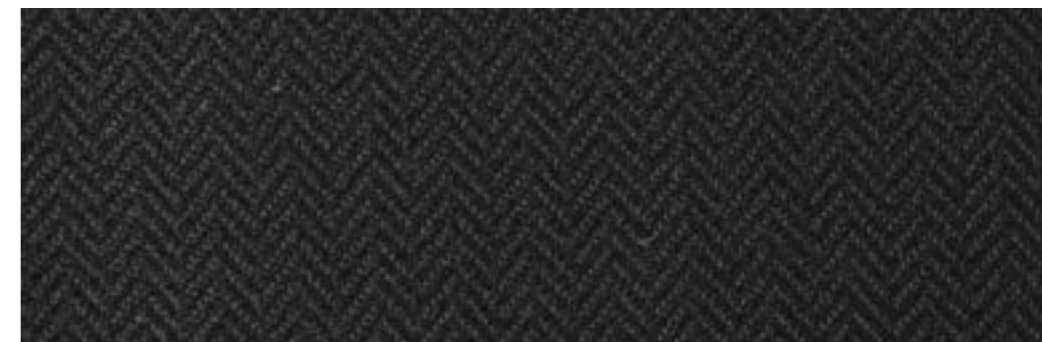
THE COLOURS ON
THE SCREEN, FOR
WELL KNOWN
TECHNICAL
REASONS, ARE
INDICATIVE ONLY
AND MAY DIFFER
FROM THE ACTUAL
FINISH.



colour 405
Dream



colour 431
Dream



colour 424
Dream



COMPOSITION **44% VI - 11% LI - 31% CO - 14% PC**
FABRIC WIDTH **140**
COLOUR FASTNESS TO LIGHT **4/5**
MARTINDALE **20.000 cycles**
PILLING **3**

MAINTENANCE



DRY CLEAN PERCHLOROETHYLENE.

CATEGORY
EXTRA

DREAM

FABRIC SCALE 1:1

ATTENTION
This fabric has been manufactured using natural fibres. Any slubs, impurities and irregularities are characteristic of the yarn used and enhance the special nature of the fabric.

THE COLOURS ON THE SCREEN, FOR WELL KNOWN TECHNICAL REASONS, ARE INDICATIVE ONLY AND MAY DIFFER FROM THE ACTUAL FINISH.

colour 501
Dream



colour 502
Dream

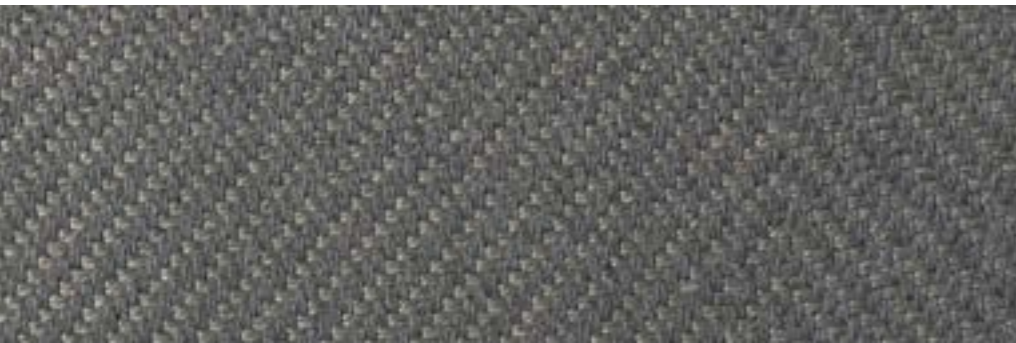


colour 543
Dream



colour 512
Dream

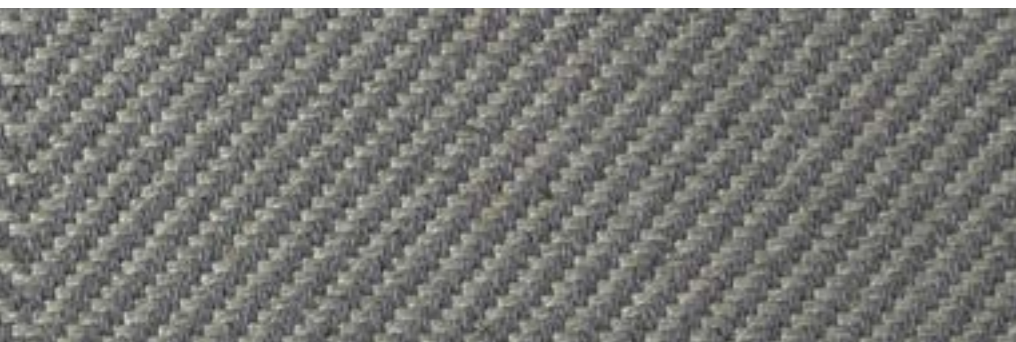




colour 542
Dream



colour 532
Dream

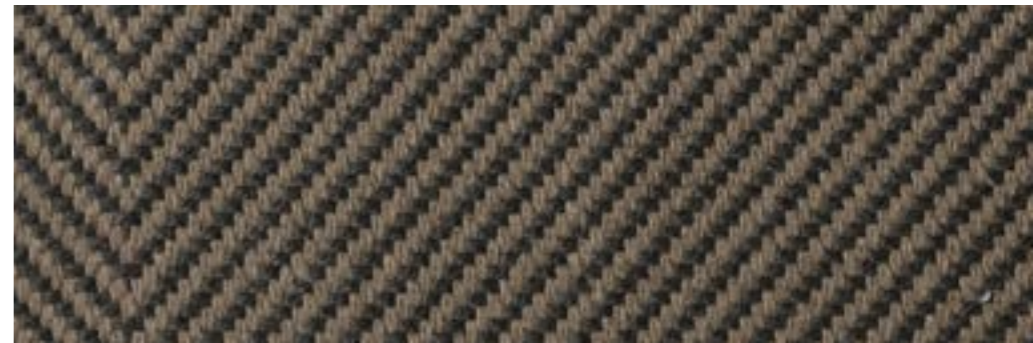


colour 541
Dream

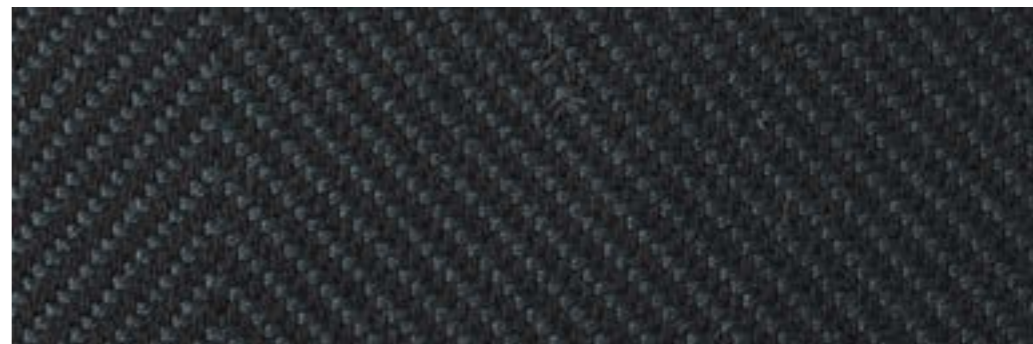


ATTENTION
This fabric has been
manufactured using
natural fibres.
Any slubs, impurities
and irregularities
are characteristic of
the yarn used and
enhance the special
nature of the fabric.

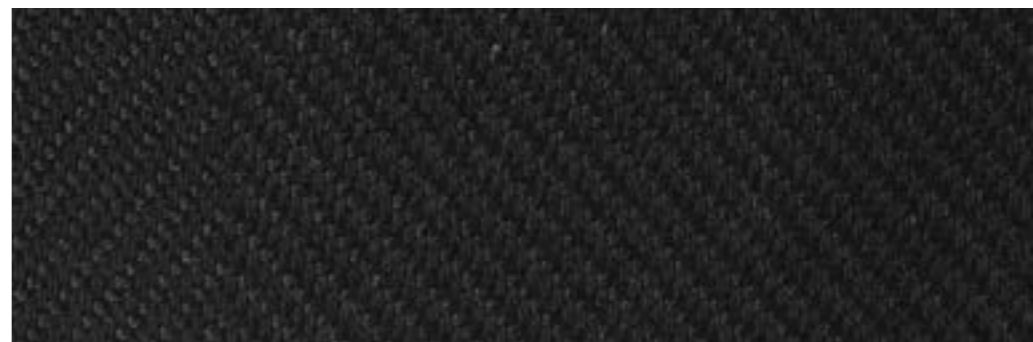
THE COLOURS ON
THE SCREEN, FOR
WELL KNOWN
TECHNICAL
REASONS, ARE
INDICATIVE ONLY
AND MAY DIFFER
FROM THE ACTUAL
FINISH.



colour 505
Dream



colour 531
Dream



colour 524
Dream

COMPOSITION **30 LI% - 70% VI**
FABRIC WIDTH **140**
COLOUR FASTNESS TO LIGHT **5**
MARTINDALE **25.000 cycles**
PILLING **4**

MAINTENANCE



DRY CLEAN PERCHLOROETHYLENE.

CATEGORY
EXTRA

GATSBY

FABRIC SCALE 1:1

ATTENTION
This fabric has been manufactured using natural fibres. Any slubs, impurities and irregularities of the yarn used and enhance the special nature of the fabric.

THE COLOURS ON THE SCREEN, FOR WELL KNOWN TECHNICAL REASONS, ARE INDICATIVE ONLY AND MAY DIFFER FROM THE ACTUAL FINISH.

colour 02
Gatsby



colour 03
Gatsby



colour 04
Gatsby



colour 06
Gatsby



colour 07
Gatsby



colour 05
Gatsby



colour 01
Gatsby



COMPOSITION **47% CO - 23% WO - 13% PL - 7% CO - 10% NY**
FABRIC WIDTH **140**
COLOUR FASTNESS TO LIGHT **4/5**
MARTINDALE **20.000 cycles**
PILLING **4**

MAINTENANCE



DRY CLEAN PERCHLOROETHYLENE.

CATEGORY
EXTRA

LOUVRE

FABRIC SCALE 1:1

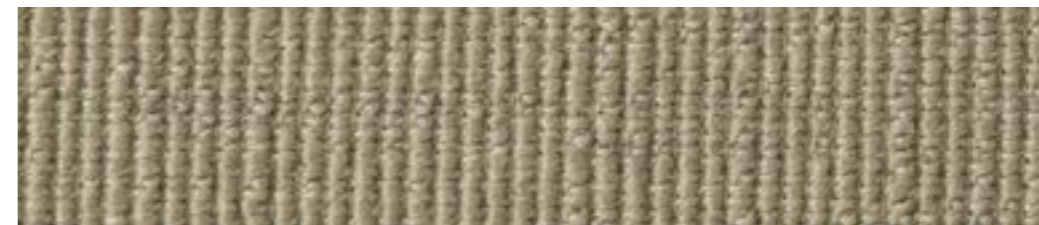
ATTENTION
This fabric has been
manufactured using
natural fibres.
Any slubs, impurities
and irregularities
are characteristic of
the yarn used and
enhance the special
nature of the fabric.

THE COLOURS ON
THE SCREEN, FOR
WELL KNOWN
TECHNICAL
REASONS, ARE
INDICATIVE ONLY
AND MAY DIFFER
FROM THE ACTUAL
FINISH.

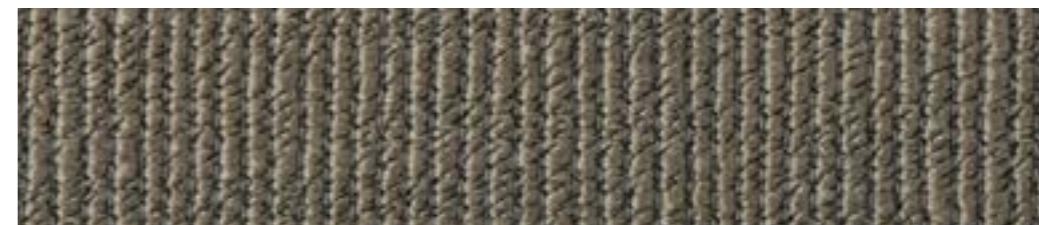
colour 159
Louvre



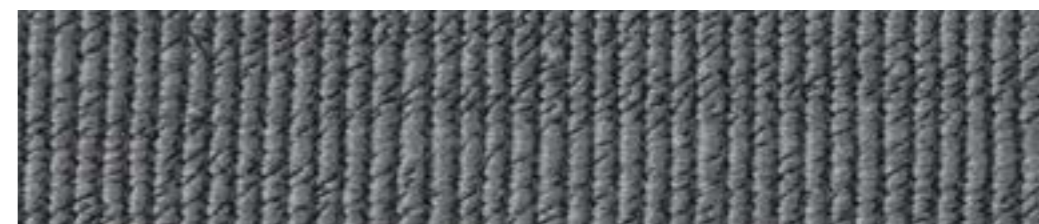
colour 117
Louvre



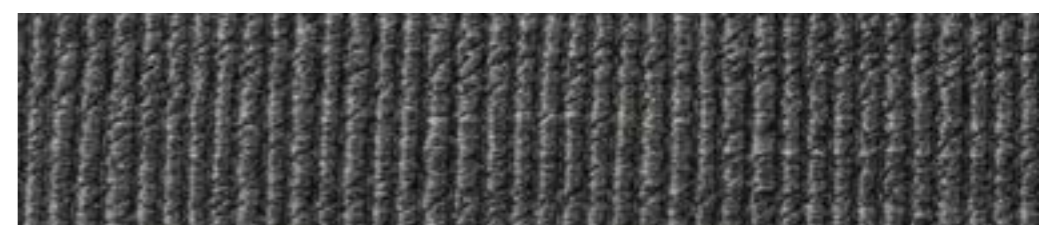
colour 158
Louvre



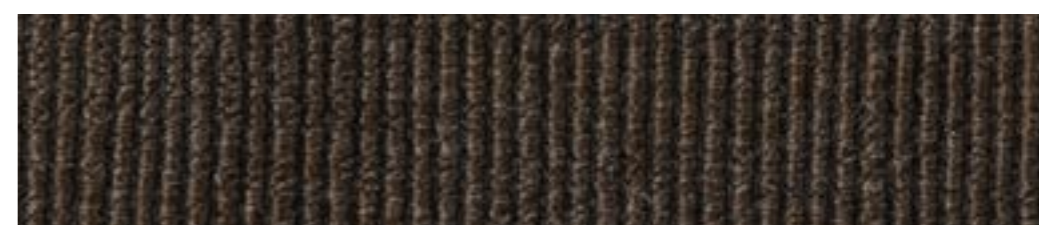
colour 152
Louvre



colour 120
Louvre



colour 105
Louvre



colour 113
Louvre



COMPOSITION **44% PC - 23% WO - 17% CO - 13% NY - 3% PL**

FABRIC WIDTH **140**

COLOUR FASTNESS TO LIGHT **4/5**

MARTINDALE **25.000 cycles**

PILLING **4**

MAINTENANCE



DRY CLEAN PERCHLOROETHYLENE.

CATEGORY

EXTRA

PLAID

FABRIC SCALE 1:1

ATTENTION

This fabric has been manufactured using natural fibres.

Any slubs, impurities and irregularities are characteristic of the yarn used and enhance the special nature of the fabric.

THE COLOURS ON THE SCREEN, FOR WELL KNOWN TECHNICAL REASONS, ARE INDICATIVE ONLY AND MAY DIFFER FROM THE ACTUAL FINISH.

colour 54

Plaid



colour 67

Plaid



colour 35

Plaid



colour 65

Plaid



colour 34

Plaid



colour 06

Plaid



colour 01

Plaid



COMPOSITION **100% CO**
FABRIC WIDTH **140**
COLOUR FASTNESS TO LIGHT **4/5**
MARTINDALE **40.000 cycles**
PILLING **4/5**

MAINTENANCE



DRY CLEAN PERCHLOROETHYLENE.

CATEGORY
EXTRA

TELA

FABRIC SCALE 1:1

ATTENTION
This fabric has been
manufactured using
natural fibres.
Any slubs, impurities
and irregularities
are characteristic of
the yarn used and
enhance the special
nature of the fabric.

THE COLOURS ON
THE SCREEN, FOR
WELL KNOWN
TECHNICAL
REASONS, ARE
INDICATIVE ONLY
AND MAY DIFFER
FROM THE ACTUAL
FINISH.

colour 10
Tela



colour 01
Tela



colour 02
Tela



colour 07
Tela

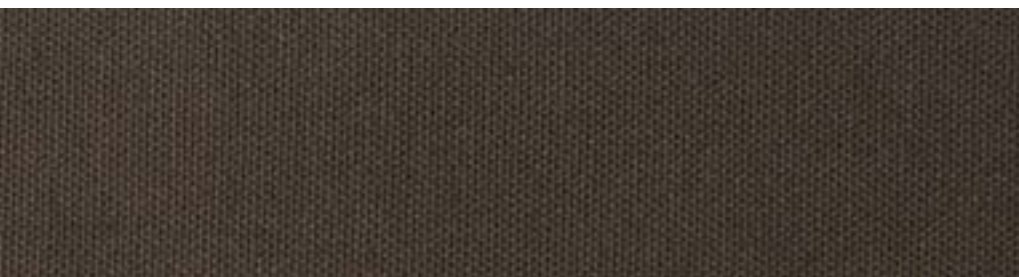




colour 08
Tela



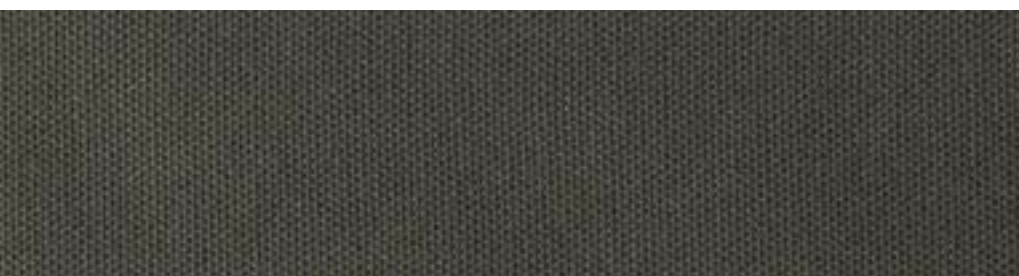
colour 16
Tela



colour 14
Tela



colour 04
Tela



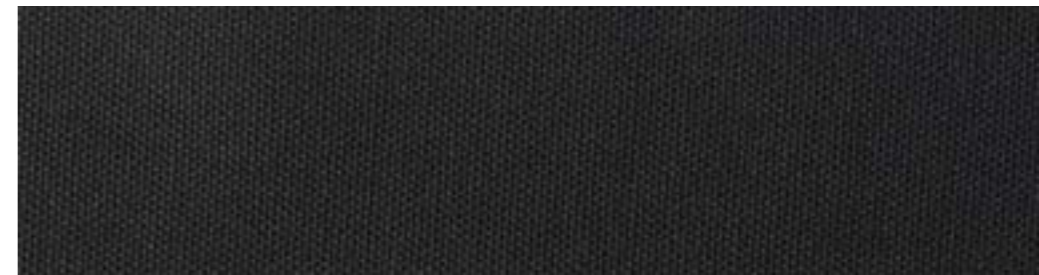
colour 17
Tela

ATTENTION
This fabric has been
manufactured using
natural fibres.
Any slubs, impurities
and irregularities
are characteristic of
the yarn used and
enhance the special
nature of the fabric.

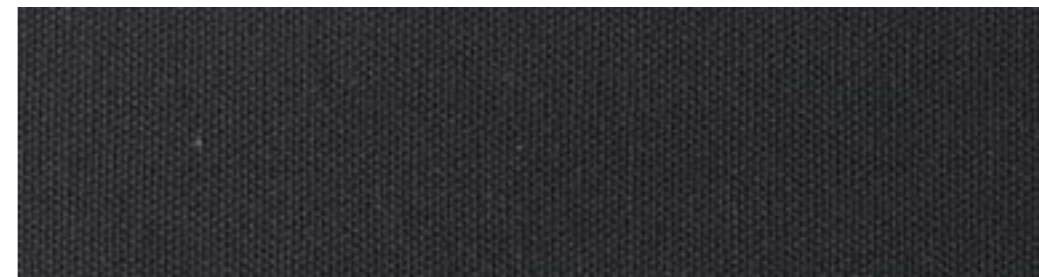
THE COLOURS ON
THE SCREEN, FOR
WELL KNOWN
TECHNICAL
REASONS, ARE
INDICATIVE ONLY
AND MAY DIFFER
FROM THE ACTUAL
FINISH.



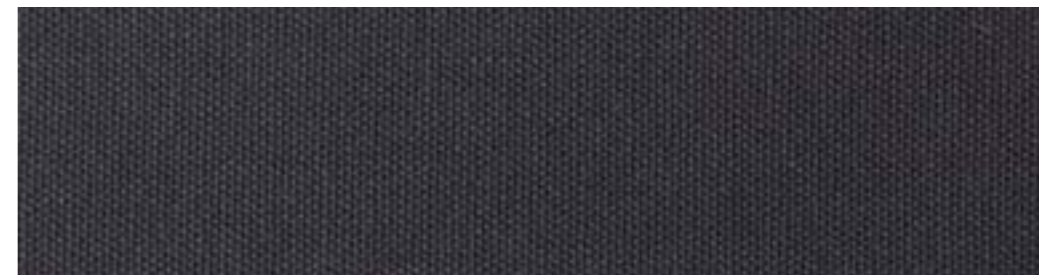
colour 09
Tela



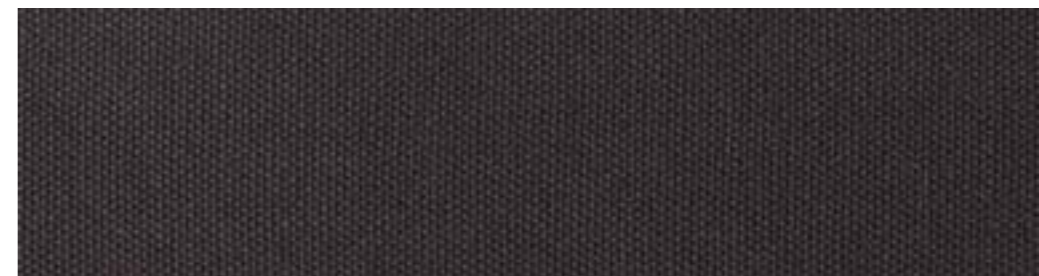
colour 05
Tela



colour 18
Tela



colour 19
Tela



colour 20
Tela



FABRICS CATEGORY

LUSSO

COMPOSITION **68 LI% - 32% CO**
FABRIC WIDTH **140**
COLOUR FASTNESS TO LIGHT **4**
MARTINDALE **15.000 cycles**
PILLING **4**

MAINTENANCE



DRY CLEAN PERCHLOROETHYLENE.

CATEGORY
LUSSO

AIR

FABRIC SCALE 1:1

ATTENTION
This fabric has been
manufactured using
natural fibres.
Any slubs, impurities
and irregularities
are characteristic of
the yarn used and
enhance the special
nature of the fabric.

THE COLOURS ON
THE SCREEN, FOR
WELL KNOWN
TECHNICAL
REASONS, ARE
INDICATIVE ONLY
AND MAY DIFFER
FROM THE ACTUAL
FINISH.

colour 01
Air



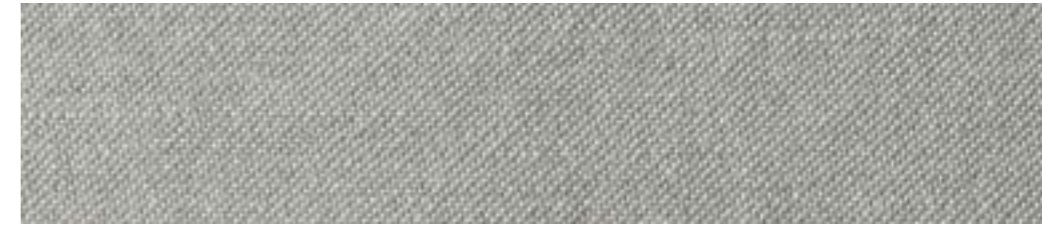
colour 11
Air



colour 14
Air



colour 08
Air



colour 04
Air



colour 17
Air



colour 15
Air



COMPOSITION **14% CO - 14% VI - 72% LI**

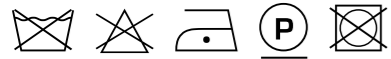
FABRIC WIDTH **140**

COLOUR FASTNESS TO LIGHT **4**

MARTINDALE **25.000 cycles**

PILLING **3/4**

MAINTENANCE



DRY CLEAN PERCHLOROETHYLENE.

CATEGORY

LUSO

CALIENTE

FABRIC SCALE 1:1

ATTENTION

This fabric has been manufactured using natural fibres.

Any slubs, impurities and irregularities are characteristic of the yarn used and enhance the special nature of the fabric.

THE COLOURS ON THE SCREEN, FOR WELL KNOWN TECHNICAL REASONS, ARE INDICATIVE ONLY AND MAY DIFFER FROM THE ACTUAL FINISH.

colour 03
Caliente



colour 02
Caliente



colour 03
Caliente



colour 04
Caliente





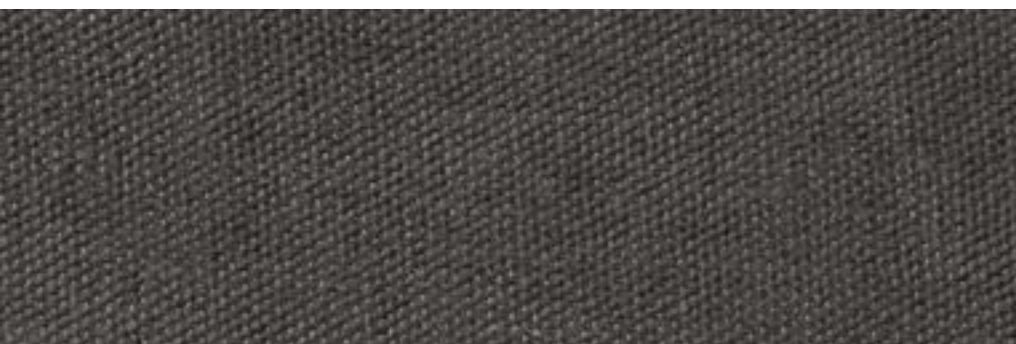
colour 05
Caliente



colour 18
Caliente



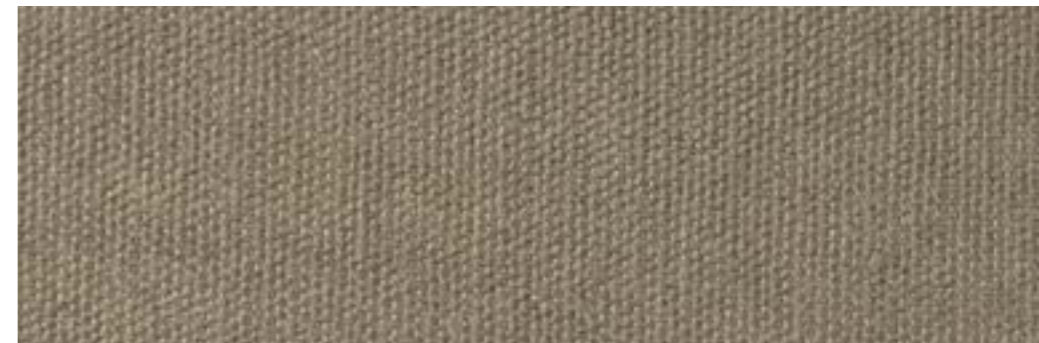
colour 20
Caliente



colour 13
Caliente

ATTENTION
This fabric has been
manufactured using
natural fibres.
Any slubs, impurities
and irregularities
are characteristic of
the yarn used and
enhance the special
nature of the fabric.

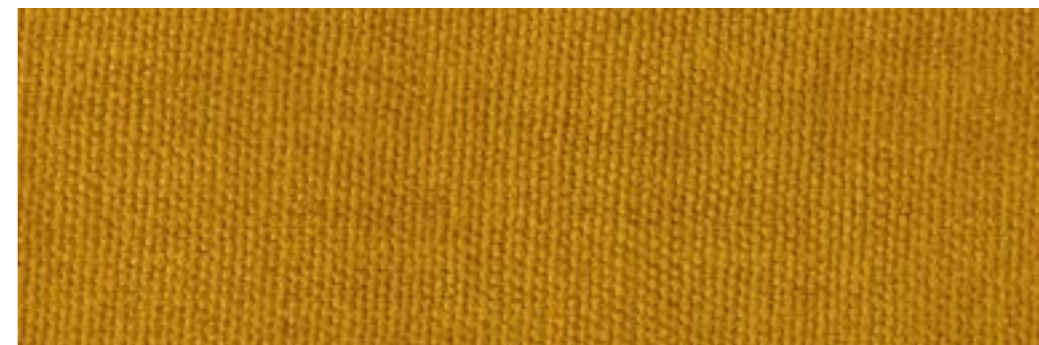
THE COLOURS ON
THE SCREEN, FOR
WELL KNOWN
TECHNICAL
REASONS, ARE
INDICATIVE ONLY
AND MAY DIFFER
FROM THE ACTUAL
FINISH.



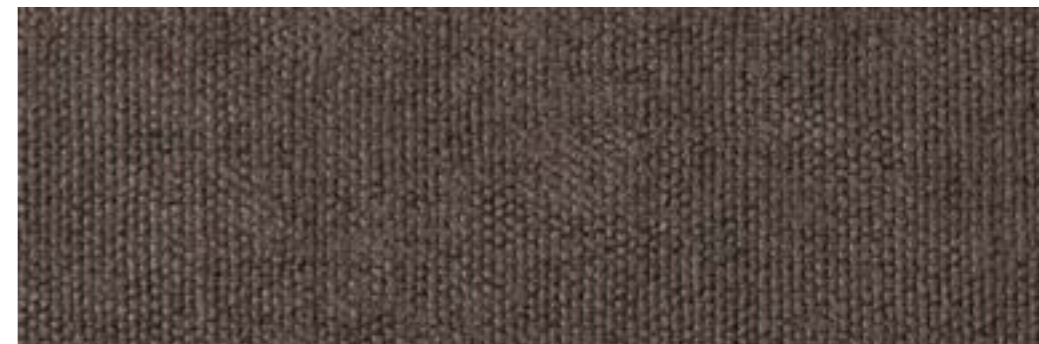
colour 11
Caliente



colour 07
Caliente



colour 17
Caliente



colour 06
Caliente



COMPOSITION **50% CO - 50% VI**
FABRIC WIDTH **140**
COLOUR FASTNESS TO LIGHT **5**
MARTINDALE **20.000 cycles**
PILLING **4**

MAINTENANCE



DRY CLEAN PERCHLOROETHYLENE.

CATEGORY
LUSSO

DANCE

FABRIC SCALE 1:1

ATTENTION
This fabric has been
manufactured using
natural fibres.
Any slubs, impurities
and irregularities
are characteristic of
the yarn used and
enhance the special
nature of the fabric.

THE COLOURS ON
THE SCREEN, FOR
WELL KNOWN
TECHNICAL
REASONS, ARE
INDICATIVE ONLY
AND MAY DIFFER
FROM THE ACTUAL
FINISH.

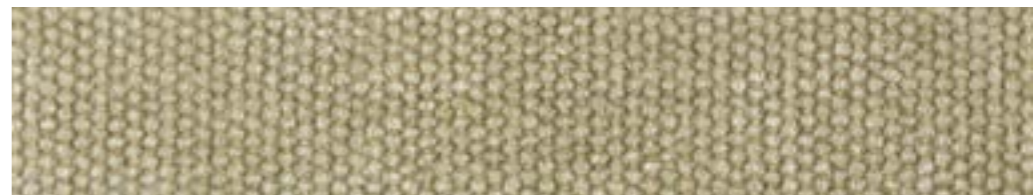
colour 02
Dance



colour 10
Dance



colour 09
Dance



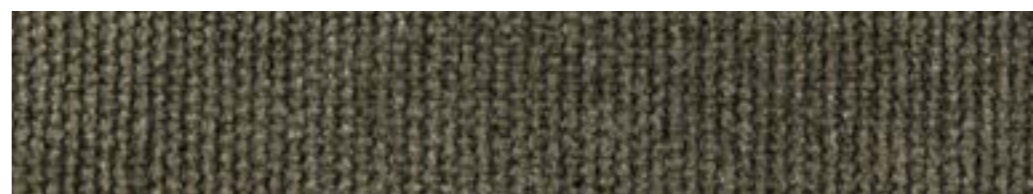
colour 13
Dance



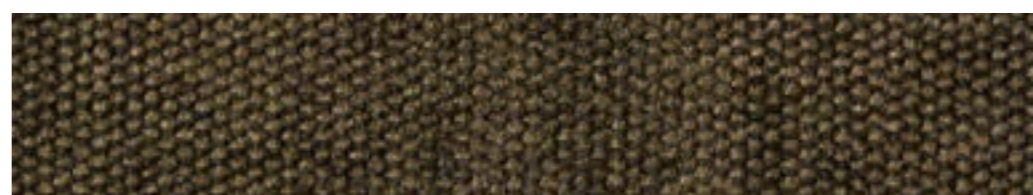
colour 03
Dance



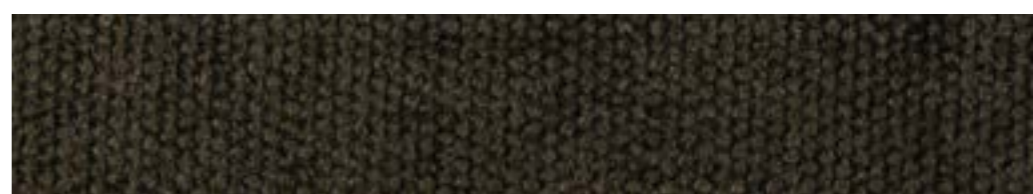
colour 11
Dance



colour 20
Dance

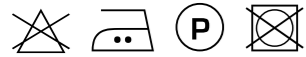


colour 21
Dance



COMPOSITION **54% JU - 46 LI**
FABRIC WIDTH **140**
COLOUR FASTNESS TO LIGHT **3/4**
MARTINDALE **22.000 cycles**
PILLING **3**

MAINTENANCE



DRY CLEAN PERCHLOROETHYLENE.

CATEGORY
LUSSO

GIZA

FABRIC SCALE 1:1

ATTENTION
This fabric has been
manufactured using
natural fibres.
Any slubs, impurities
and irregularities
are characteristic of
the yarn used and
enhance the special
nature of the fabric.

THE COLOURS ON
THE SCREEN, FOR
WELL KNOWN
TECHNICAL
REASONS, ARE
INDICATIVE ONLY
AND MAY DIFFER
FROM THE ACTUAL
FINISH.

colour 02
Giza



colour 01
Giza



colour 03
Giza



colour 02
Giza





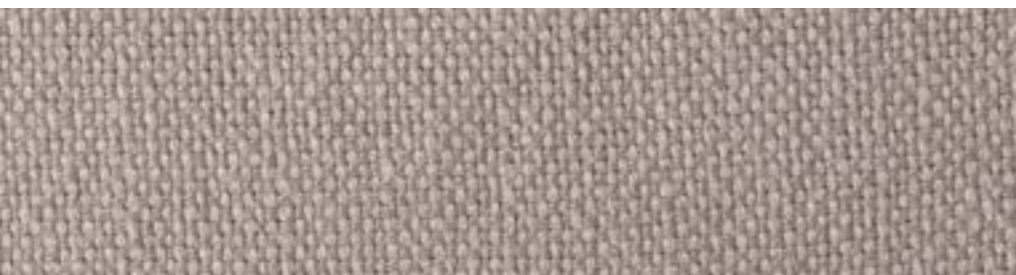
colour 19
Giza



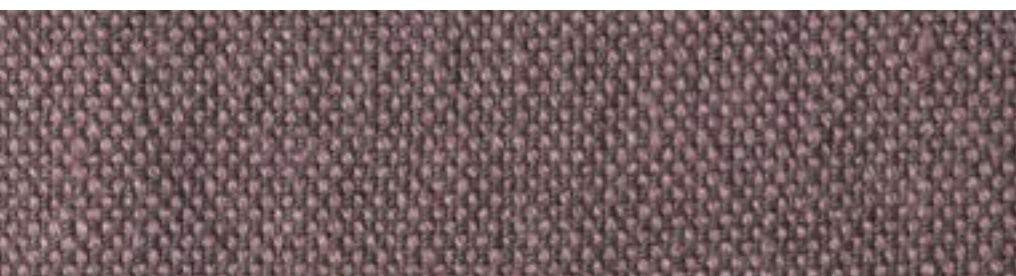
colour 04
Giza



colour 12
Giza



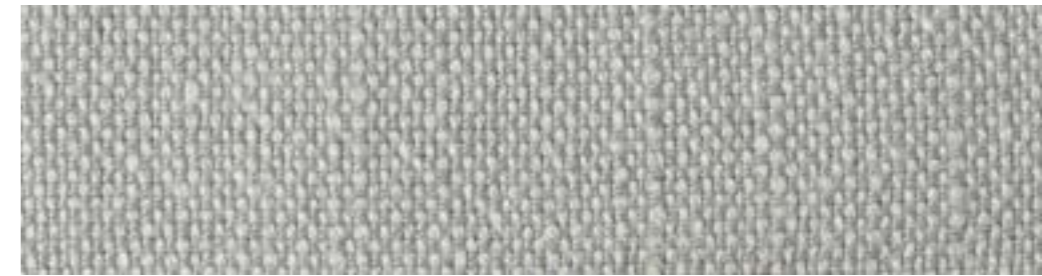
colour 11
Giza



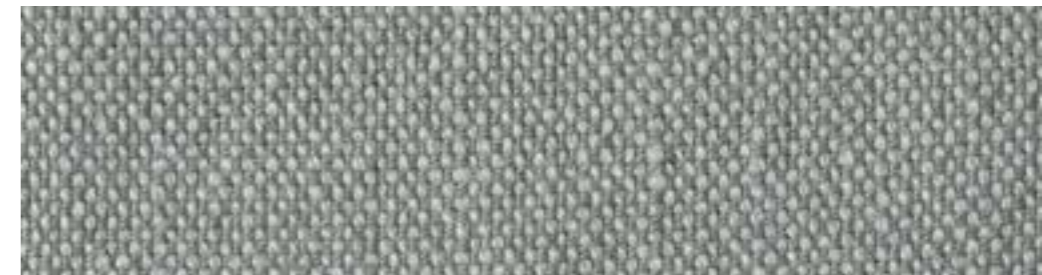
colour 10
Giza

ATTENTION
This fabric has been
manufactured using
natural fibres.
Any slubs, impurities
and irregularities
are characteristic of
the yam used and
enhance the special
nature of the fabric.

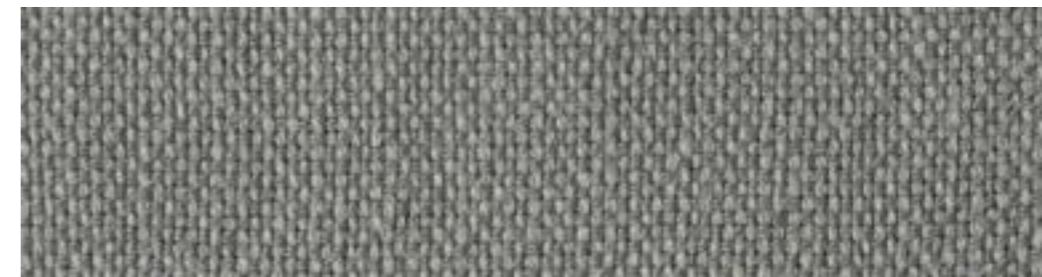
THE COLOURS ON
THE SCREEN, FOR
WELL KNOWN
TECHNICAL
REASONS, ARE
INDICATIVE ONLY
AND MAY DIFFER
FROM THE ACTUAL
FINISH.



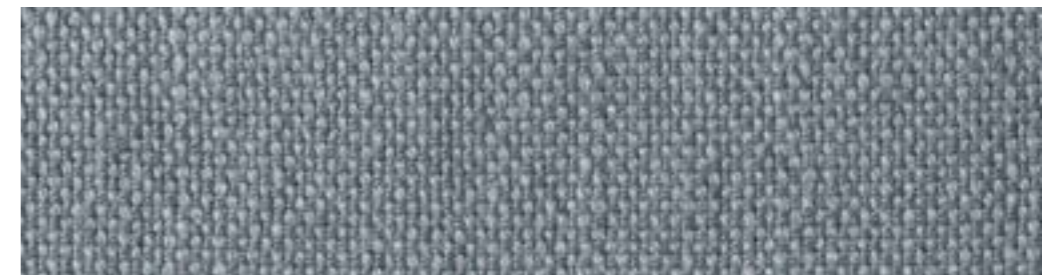
colour 18
Giza



colour 13
Giza



colour 14
Giza



colour 15
Giza

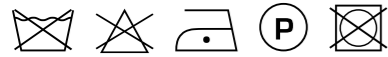


colour 17
Giza



COMPOSITION **100% CO**
FABRIC WIDTH **140**
COLOUR FASTNESS TO LIGHT **4/5**
MARTINDALE **30.000 cycles**
PILLING **4**

MAINTENANCE



MEGAFLOWER

DRY CLEAN PERCHLOROETHYLENE.

FABRIC SCALE 1:1

CATEGORY
LUSSO

ATTENTION
This fabric has been manufactured using natural fibres. Any slubs, impurities and irregularities are characteristic of the yarn used and enhance the special nature of the fabric.

THE COLOURS ON THE SCREEN, FOR WELL KNOWN TECHNICAL REASONS, ARE INDICATIVE ONLY AND MAY DIFFER FROM THE ACTUAL FINISH.

colour 02
Megaflower



colour 10
Megaflower



COMPLETE
PATTERN
ON DIMENSION
1M x 1M

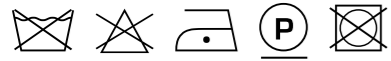


colour 03
Megaflower



COMPOSITION **70% CO - 30% VI**
FABRIC WIDTH **140**
COLOUR FASTNESS TO LIGHT -
MARTINDALE **35.000 cycles**
PILLING **4/5**

MAINTENANCE



DRY CLEAN PERCHLOROETHYLENE.

CATEGORY
LUSO

PLAZA

FABRIC SCALE 1:1

ATTENTION
This fabric has been
manufactured using
natural fibres.
Any slubs, impurities
and irregularities
are characteristic of
the yarn used and
enhance the special
nature of the fabric.

THE COLOURS ON
THE SCREEN, FOR
WELL KNOWN
TECHNICAL
REASONS, ARE
INDICATIVE ONLY
AND MAY DIFFER
FROM THE ACTUAL
FINISH.

colour 03
Plaza



colour 01
Plaza



colour 03
Plaza

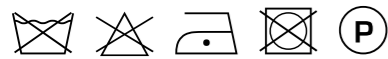


colour 05
Plaza



COMPOSITION **100% LI**
FABRIC WIDTH **140**
COLOUR FASTNESS TO LIGHT **4/5**
MARTINDALE **25.000 cycles**
PILLING **4/5**

MAINTENANCE



DRY CLEAN PERCHLOROETHYLENE.

CATEGORY
LUSSO

PUIROLINO

FABRIC SCALE 1:1

ATTENTION
This fabric has been
manufactured using
natural fibres.
Any slubs, impurities
and irregularities
are characteristic of
the yarn used and
enhance the special
nature of the fabric.

THE COLOURS ON
THE SCREEN, FOR
WELL KNOWN
TECHNICAL
REASONS, ARE
INDICATIVE ONLY
AND MAY DIFFER
FROM THE ACTUAL
FINISH.

colour 02
Purolino



colour 02
Purolino



colour 04
Purolino



colour 19
Purolino



COMPOSITION **100% LI**
FABRIC WIDTH **140**
COLOUR FASTNESS TO LIGHT **4**
MARTINDALE **16.000 cycles**
PILLING **3**

MAINTENANCE



DRY CLEAN PERCHLOROETHYLENE.

CATEGORY
LUSSO

SHABBY

FABRIC SCALE 1:1

ATTENTION
This fabric has been
manufactured using
natural fibres.
Any slubs, impurities
and irregularities
are characteristic of
the yarn used and
enhance the special
nature of the fabric.

THE COLOURS ON
THE SCREEN, FOR
WELL KNOWN
TECHNICAL
REASONS, ARE
INDICATIVE ONLY
AND MAY DIFFER
FROM THE ACTUAL
FINISH.

colour 25
Shabby



colour 22
Shabby



colour 23
Shabby



colour 122
Shabby





colour 05
Shabby



colour 14
Shabby



colour 123
Shabby



colour 121
Shabby



colour 105
Shabby

ATTENTION
This fabric has been
manufactured using
natural fibres.
Any slubs, impurities
and irregularities
are characteristic of
the yarn used and
enhance the special
nature of the fabric.

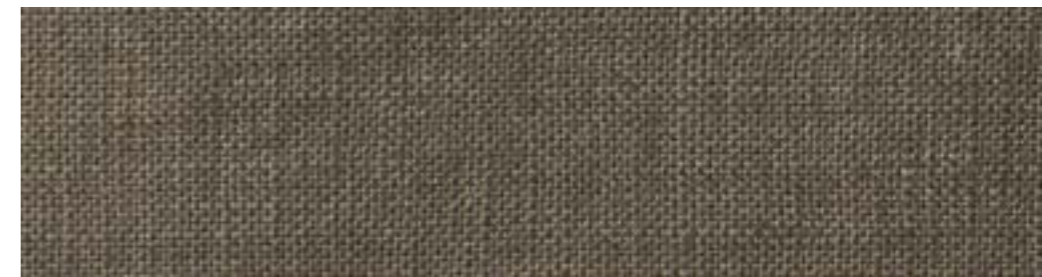
THE COLOURS ON
THE SCREEN, FOR
WELL KNOWN
TECHNICAL
REASONS, ARE
INDICATIVE ONLY
AND MAY DIFFER
FROM THE ACTUAL
FINISH.



colour 125
Shabby



colour 21
Shabby



colour 24
Shabby



colour 124
Shabby



colour 114
Shabby



COMPOSITION **100% CO**
FABRIC WIDTH **140**
COLOUR FASTNESS TO LIGHT --
MARTINDALE **10.000 cycles**
PILLING **3/4**

MAINTENANCE



DRY CLEAN PERCHLOROETHYLENE.

CATEGORY
LUSSO

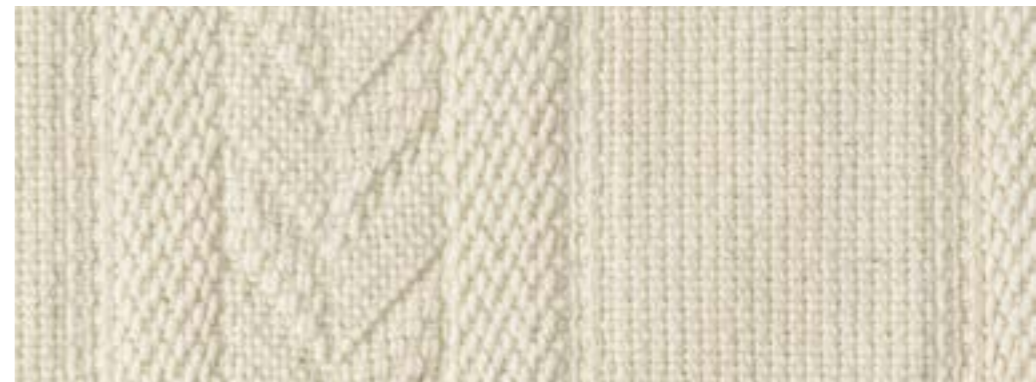
TRECCIA

FABRIC SCALE 1:1

ATTENTION
This fabric has been
manufactured using
natural fibres.
Any slubs, impurities
and irregularities
are characteristic of
the yarn used and
enhance the special
nature of the fabric.

THE COLOURS ON
THE SCREEN, FOR
WELL KNOWN
TECHNICAL
REASONS, ARE
INDICATIVE ONLY
AND MAY DIFFER
FROM THE ACTUAL
FINISH.

colour 01
Treccia



colour 03
Treccia



DISEGNO
COMPLETO
telo dimension
1M x 1M



colour 02
Treccia



COMPOSITION **100% CO**
FABRIC WIDTH **140**
COLOUR FASTNESS TO LIGHT **4/5**
MARTINDALE **> 30.000 cycles**
PILLING **4**

MAINTENANCE



DRY CLEAN PERCHLOROETHYLENE.

CATEGORY
LUSSO

TRICOT

FABRIC SCALE 1:1

ATTENTION
This fabric has been
manufactured using
natural fibres.
Any slubs, impurities
and irregularities
are characteristic of
the yarn used and
enhance the special
nature of the fabric.

THE COLOURS ON
THE SCREEN, FOR
WELL KNOWN
TECHNICAL
REASONS, ARE
INDICATIVE ONLY
AND MAY DIFFER
FROM THE ACTUAL
FINISH.

colour 03
Tricot



colour 10
Tricot



COMPLETE
PATTERN
ON DIMENSION
1M x 1M



colour 02
Tricot



COMPOSITION **50% CO - 50% VI**
FABRIC WIDTH **140**
COLOUR FASTNESS TO LIGHT **3/4**
MARTINDALE **13.000 cycles**
PILLING **4/5**

MAINTENANCE



DRY CLEAN PERCHLOROETHYLENE.

CATEGORY
LUSSO

VERY SNOW

FABRIC SCALE 1:1

ATTENTION
This fabric has been manufactured using natural fibres. Any slubs, impurities and irregularities are characteristic of the yarn used and enhance the special nature of the fabric.

THE COLOURS ON THE SCREEN, FOR WELL KNOWN TECHNICAL REASONS, ARE INDICATIVE ONLY AND MAY DIFFER FROM THE ACTUAL FINISH.

colour 01
Very Snow



colour 05
Very Snow



COMPLETE
PATTERN
ON DIMENSION
1M x 1M



colour 03
Very Snow



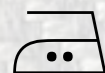
SYMBOLS LEGEND



Descrizione del simbolo in italiano e inglese
Any slubs, impurities and irregularities are characteristic of the yarn used



This fabric has been manufactured using natural fibres.
Any slubs, impurities and irregularities are characteristic of the yarn used



This fabric has been manufactured using natural fibres.
Any slubs, impurities and irregularities are characteristic of the yarn used



This fabric has been manufactured using natural fibres.
Any slubs, impurities and irregularities are characteristic of the yarn used



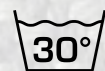
This fabric has been manufactured using natural fibres.
Any slubs, impurities and irregularities are characteristic of the yarn used



This fabric has been manufactured using natural fibres.
Any slubs, impurities and irregularities are characteristic of the yarn used



This fabric has been manufactured using natural fibres.
Any slubs, impurities and irregularities are characteristic of the yarn used



This fabric has been manufactured using natural fibres.
Any slubs, impurities and irregularities are characteristic of the yarn used



This fabric has been manufactured using natural fibres.
Any slubs, impurities and irregularities are characteristic of the yarn used

LAUNDRY CARE / LEGEND

ATTENZIONE
 questo tessuto è
 realizzato con fibre
 naturali .
 Fiammature, impurità
 ed irregolarità sono
 proprietà che ne
 caratterizzano
 l'aspetto esaltandone
 i pregi

ATTENTION
 This fabric has been
 manufactured using
 natural fibres.
 Any slubs, impurities
 and irregularities
 are characteristic of
 the yarn used and
 enhance the special
 nature of the fabric.

I COLORI SULLO
 SCHERMO, PER
 MOTIVI TECNICI BEN
 NOTI, SONO
 PURAMENTE
 INDICATIVI E
 POTREBBERO ESSERE
 DIVERSI RISPETTO AL
 COLORE REALE.

THE COLOURS ON
 THE SCREEN, FOR
 WELL KNOWN
 TECHNICAL
 REASONS, ARE
 INDICATIVE ONLY
 AND MAY DIFFER
 FROM THE ACTUAL
 FINISH.



Frigerio