

02 SADDLE LEATHER / CUOIO (REV.04)

02-010 BLACK NERO	02-200 GREY GRIGIO	02-201 PINE BARK CORTECCIA	02-240 ASH GREY GRIGIO CENERE	02-260 ICE GREY GRIGIO GHIACCIO	02-262 CLOUD GREY GRIGIO NUVOLA
02-263 CHALK GREY GRIGIO GESSO	02-300 WHITE BIANCO	02-301 OFF WHITE BIANCO OFF	02-450 BISCUIT BISCOTTO	02-451 SIERRA	02-455 SEQUOIA
02-460 CHAMPAGNE	02-510 LIGHT IVORY CREMA	02-607 RAISIN UVETTA	02-608 ALMOND MANDORLA	02-610 COFFEE BROWN CAFFÈ	02-613 SEPIA SEPIA
02-612 CHIPMUNK SCOIATTOLO	02-614 TAUPE TORTORA	02-615 RUM	02-616 CHOCOLATE CIOCCOLATA	02-620 WALNUT BROWN NOCE	02-700 RUSSIA RED ROSSO BULGARO
02-710 RED ROSSO	02-713 ORANGE ARANCIA	02-714 RUST RUGGINE	02-801 ENGLISH GREEN VERDE INGLESE	02-802 SAGE SALVIA	02-803 OLIVE OLIVA
02-804 CYPRESS CIPRESSO	02-813 AMBER GREEN VERDE AMBRA	02-900 BLUE BLU	02-920 YELLOW GIALLO	02-950 DARK BLUE BLU SCURO	02-970 AUBERGINE MELANZANA

FRAG #02 SADDLE leather represents a perfect balance of thickness, elasticity, tactility and stiffness in a superb product of European origin, tanned in Italy. It is resistant to wear and stretching, and retains its colour in normal use. Only a small and specially designed selection of our products can be made with this rich material, which is durable and easy to maintain. It is processed entirely in Italy, where total control of the production process and treatments guarantees quality and durability.

Colour tones may vary from one dye lot to another / I colori possono variare da una partita all'altra

07 TIEPOLO LEATHER / PELLE (REV.06)

07-010 BLACK NERO	07-202 CLAY CRETA	07-203 CHAMOIS CAMOSCIO	07-204 ELEPHANT ELEFANTE	07-211 DARK GREY GRIGIO SCURO	07-224 OPAL OPALE
07-225 ROPE GREY GRIGIO CORDA	07-300 WHITE BIANCO	07-301 OFF WHITE BIANCO OFF	07-302 OAT AVENA	07-320 FLAX LINO	07-444 PEAT BROWN TORBA
07-450 BISCUIT BISCOTTO	07-510 LIGHT IVORY CREMA	07-600 DARK BROWN TESTA DI MORO	07-610 COFFEE BROWN CAFFÈ	07-612 CHIPMUNK SCOIATTOLO	07-621 DEER BROWN DAINO
07-634 KAKI	07-635 MUSTANG	07-701 JESTER RED ROSSO GIULLARE	07-712 CHILI RED ROSSO CHILI	07-808 UNDERGROWTH SOTTOBOSCO	07-818 BEETLE SCARABEO
07-819 JUNGLE GIUNGLA	07-900 BLUE BLU	07-902 CORAL BLUE BLU CORALLO	07-907 MEDITERRANEAN MEDITERRANEO	07-921 DANDELION TARASSACO	07-970 AUBERGINE MELANZANA
07-975 CITRUS AGRUME					

FRAG #07 TIEPOLO is a pigmented, compact and hard-wearing grain leather of European origin. As its smooth, even surface suggests, it is soft and silky to the touch. It is processed entirely in Italy, where total control of the production process and treatments guarantees quality and durability. An ideal material for our chairs and sofas. Durable and easy to clean, its special qualities mean that it grows in elegance with the passage of time. It is resistant to wear and stretching, and retains its colour in normal use. Available in a wide range of colours, it is an ideal material for a variety of furnishing projects.

Colour tones may vary from one dye lot to another / I colori possono variare da una partita all'altra

09 RAFFAELLO LEATHER / PELLE (REV.01)

09-010 BLACK NERO	09-217 HIPPO GREY IPPOPOTAMO	09-218 ATLANTIC GREY ATLANTICO	09-223 SHARK GREY SQUALO	09-300 WHITE BIANCO	09-301 OFF WHITE BIANCO OFF
09-451 SIERRA	09-458 SAVANNAH SAVANA	09-513 CAMEL CAMMELLO	09-603 WENGÈ WENGE	09-610 COFFEE BROWN CAFFÈ	09-621 DEER BROWN DAINO
09-622 FAWN ECRU	09-623 PUCE BRUNO	09-712 CHILI RED ROSSO CHILI	09-730 RALLY RED ROSSO CORSA	09-740 TERRACOTTA	09-806 ASPARAGUS GREEN ASPARAGO
09-813 AMBER GREEN VERDE AMBRA	09-816 BIRCH GREEN BETULLA	09-903 GENTIAN BLUE GENZIANA	09-904 INDIGO INDACO	09-970 AUBERGINE MELANZANA	09-973 CYCLAMEN CICLAMINO

FRAG #09 RAFFAELLO is a pigmented, compact and hard-wearing grain leather of European origin. It has a distinctive fine grain, with a perfect balance between the natural material and its final surface treatment that creates a rich sturdiness allied to a feel of softness. It is processed entirely in Italy, where total control of the production process and treatments guarantees quality and durability. An ideal material for our chairs and sofas. Durable and easy to clean, it is resistant to wear and stretching, and retains its colour in normal use.

Colour tones may vary from one dye lot to another / I colori possono variare da una partita all'altra

31 MICHELANGELO NABUK / NABUK (REV.02)*

31-3405 PINE BARK CORTECCIA	31-3406 TOBACCO TABACCO	31-3416 FOSSIL FOSSILE	31-3417 MAUVE CHALK MALVA CHIARO	31-3424 PORT WINE PORTO	31-3409 PUCE BRUNO
31-3501 ORION BLUE BLU ORIONE					

* Materiale non conforme a BS5852 e CALIFORNIA TB117-2013
This material does not comply with BS5852 nor CALIFORNIA TB117-2013

FRAG #31 MICHELANGELO NABUK is a velour-grain leather with a marked writing effect that creates the characteristic appearance of nabuck. A pronounced sensation of softness and warmth distinguish this leather, with its pleasurable velvety feel. Surface markings, grain defects and minor blemishes of various kinds are typical of this kind of product, emphasising its natural origins. It has a quality that comes from selection of the best European hides, subsequently enhanced by tanning and processing performed entirely in Italy. A perfect material for prestige products in exclusive contexts. Its particular characteristics mean that it may be damaged by exposure to direct sunlight or heat sources, or stained by spilt liquids.

46 LEONARDO LEATHER / PELLE (REV.00)

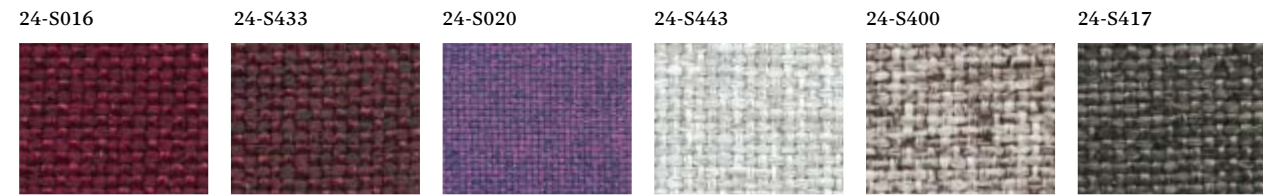
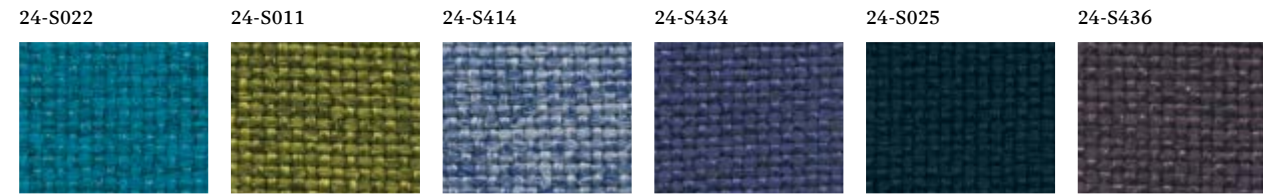
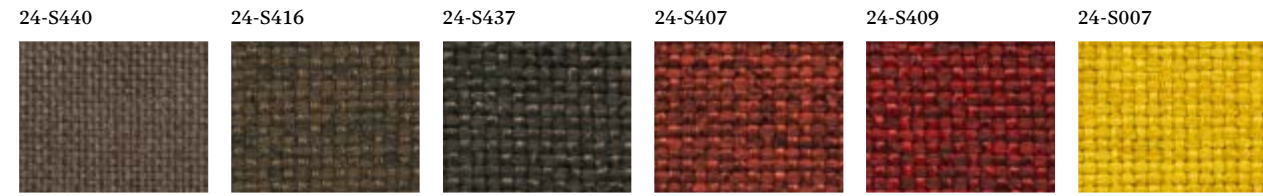
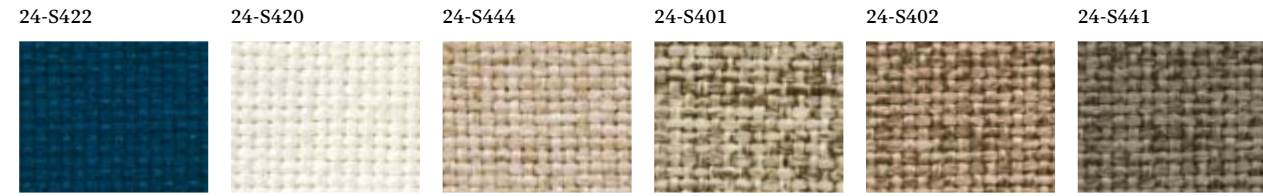
46-1618 NERO BLACK	46-1616 GRIGIO GREY	46-1617 LAVAGNA SLATE GRAY	46-1607 TESTA DI MORO DARK BROWN	46-1613 GHIANDA ACORN	46-1605 DAINO DEER
46-1615 CIPRIA CIPRIA	46-1610 ABETE GREEN FIR	46-1602 NATURALE NATURAL	46-1606 TORTORA TAUPE		

FRAG #46 LEONARDO is a leather of European origin with a sleek appearance produced by treatment with high quality oils, fats and waxes. Slightly two-shaded, it is soft and stimulating to the touch. Its seductive combination of design and texture give it a timeless appeal. It is a return to the origins, colour, softness and smell of natural leather, allied to the special nature of "writing" leather to create a timeless icon that will gradually change in appearance over its lifetime. Possible imperfections and slight colour variations are characteristic of this product, confirming the authenticity and naturalness of pure aniline leather. Its particular characteristics mean that it may be damaged by exposure to direct sunlight or heat sources, or stained by spilt liquids.

Colour tones may vary from one dye lot to another / I colori possono variare da una partita all'altra

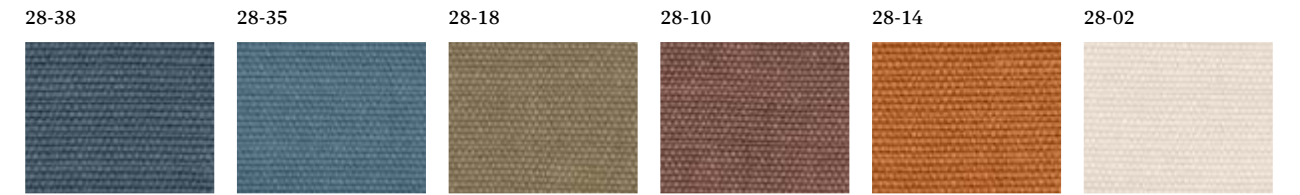
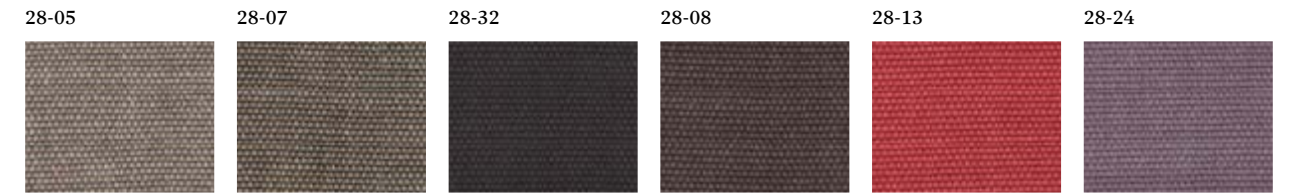
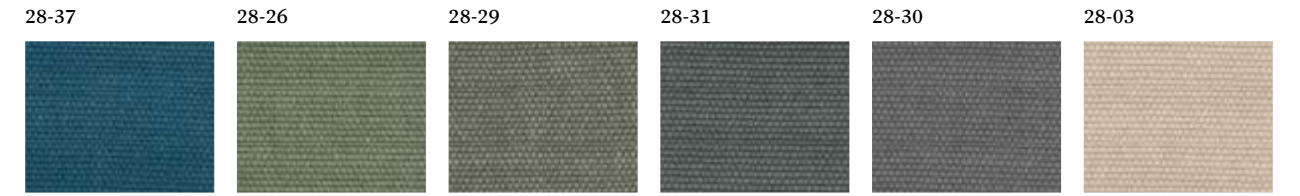
24 SOLE FABRIC / TESSUTO (REV.01)

100%TREVIRA



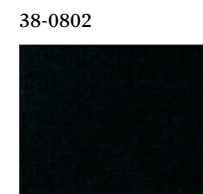
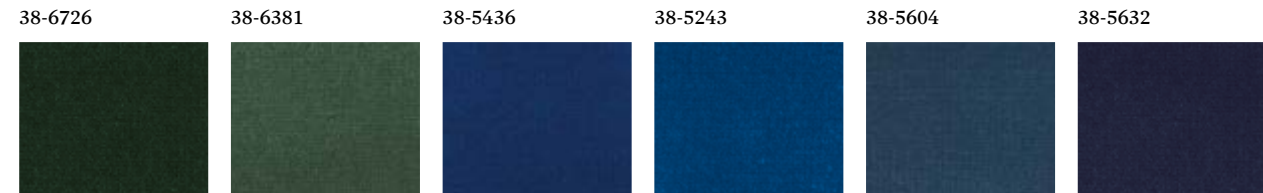
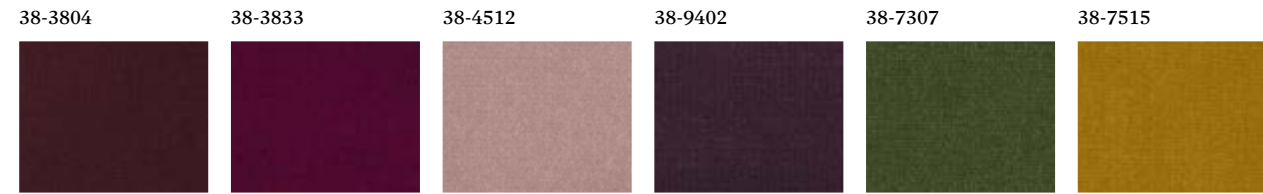
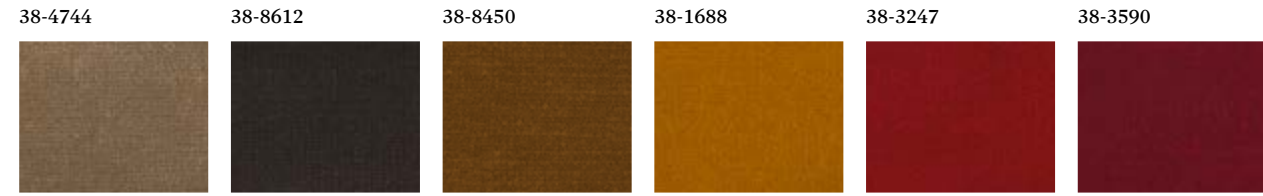
28 MARTE FABRIC / TESSUTO (REV.01)

100%CO



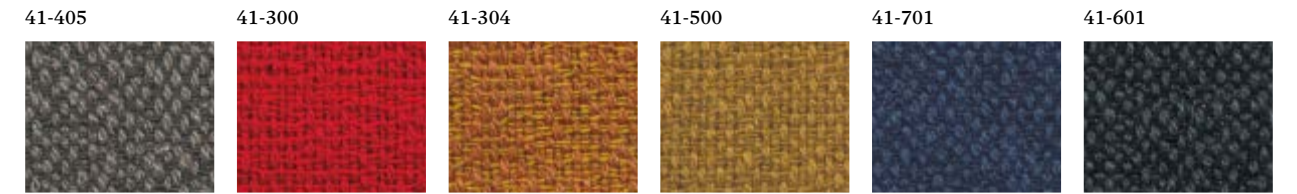
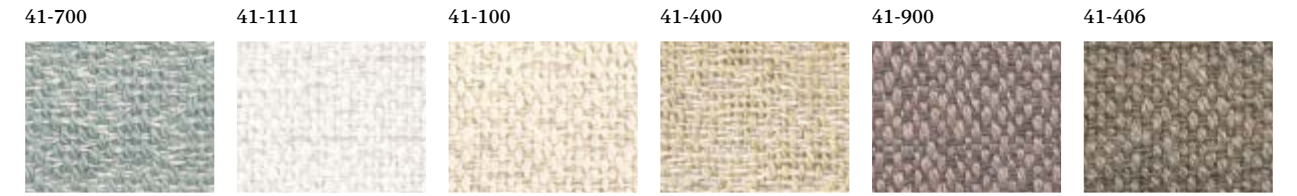
38 VENERE FABRIC / TESSUTO (REV.00)

100% PILE CO 80% TOTAL CO 10% PL 10% CMD



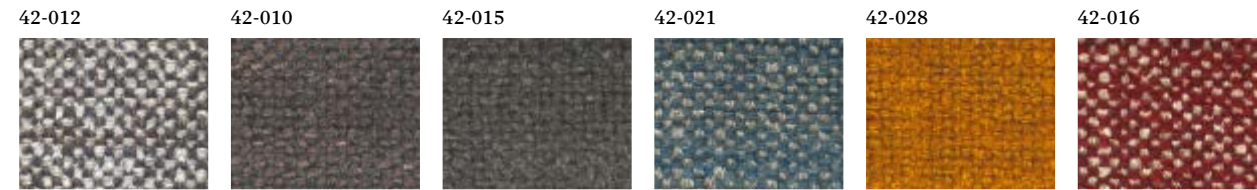
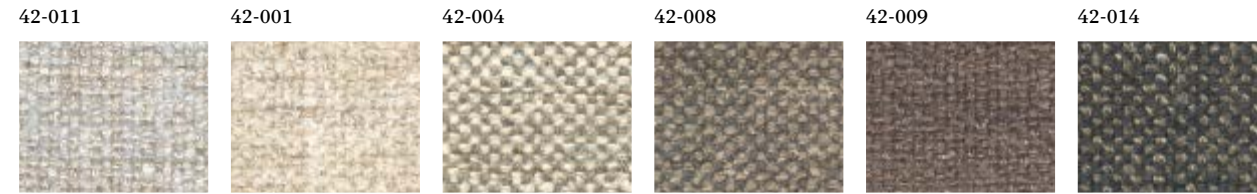
41 TETI FABRIC / TESSUTO (REV.00)

80% CO 20% PL



42 URANO FABRIC / TESSUTO (REV.00)

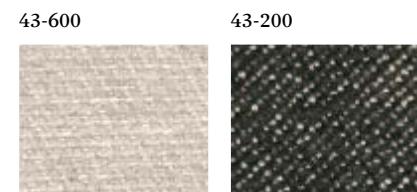
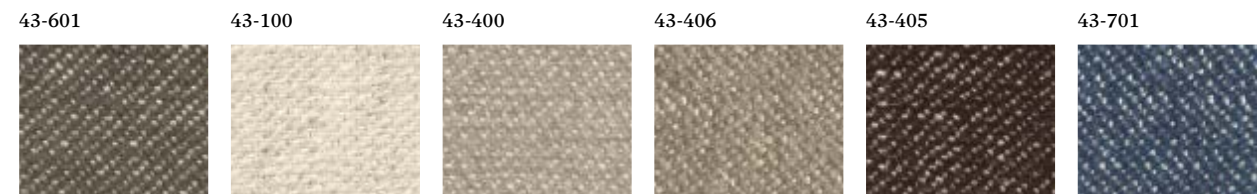
25%LI-75%VI



UNI 9175 (CL1IM) UNI 8456 (CL 1) UNI EN 1021 1-2 BS5852 1-2

43 ERIS FABRIC / TESSUTO (REV.00)

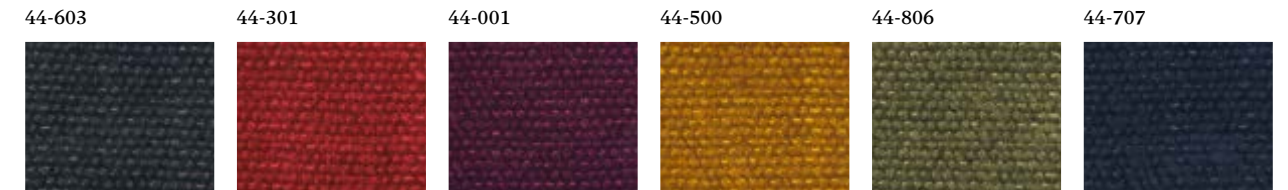
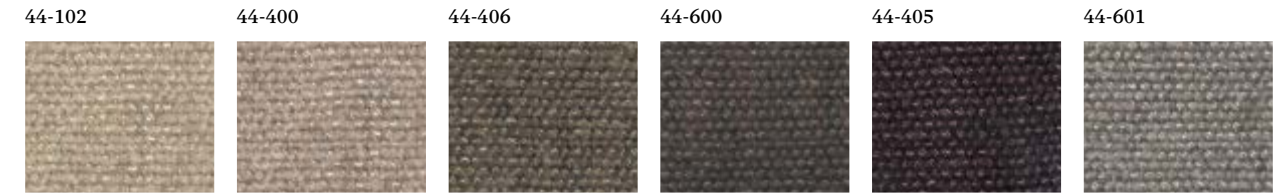
44%CO 27%VI 23%PC 6%LI



Colour tones may vary from one dye lot to another / I colori possono variare da una partita all'altra

44 ARIEL FABRIC / TESSUTO (REV.00)

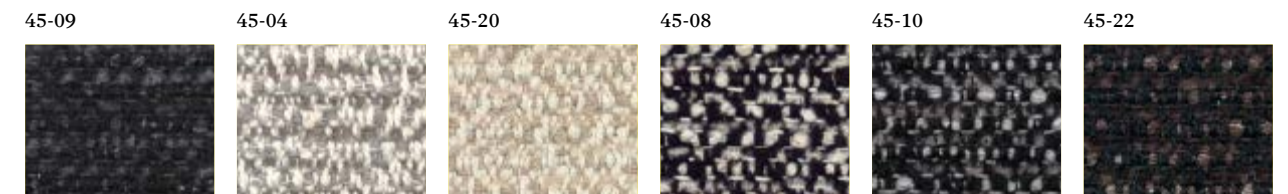
64%VI 22%LI 14%CO



UNI 9175 (CL1IM) UNI 8456 (CL 1) UNI EN 1021 1-2 BS5852 1-2

45 DIONE FABRIC / TESSUTO (REV.00)

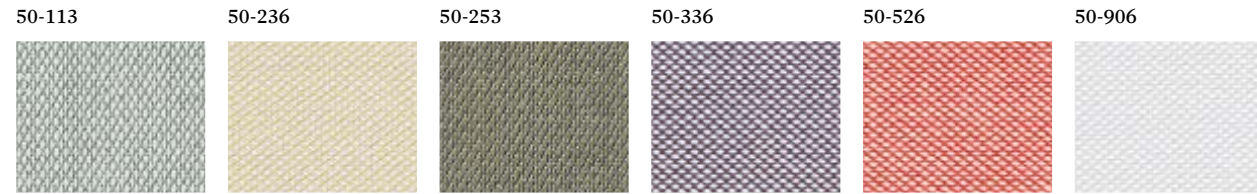
55%CO 23%PL 16%PC 3%VI 3%LI



BS5852 PART 1. TB 117-2013

Colour tones may vary from one dye lot to another / I colori possono variare da una partita all'altra

50 STEELCUT TRIO 3 FABRIC / TESSUTO (REV.00) 90%NEW WOOL, WORSTED, 10%NYLON



AS/NZS 1530.3. AS/NZS 3837 CLASS 2 BS 5852 CRIB 5 WITH TREATMENT. BS 5852 PART 1 DIN 4102 B2. EN 1021-1/2, IMO FTP CODE 2010: PART 8 NFD 60 013. NFPA 260. SN 198 898 5.3 WITH TREATMENT. UNI 9175 11M. US CAL. BULL. 117-2013. ONORM B1/Q1

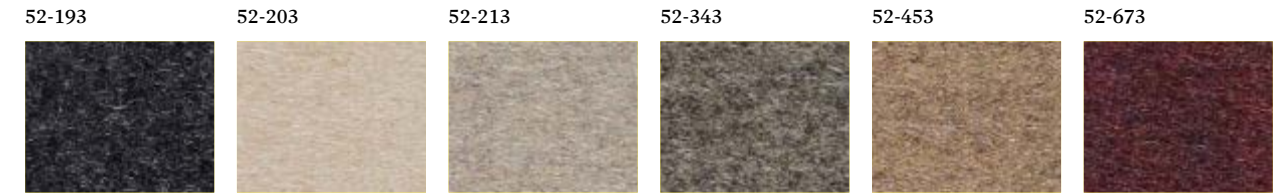
51 MAPLE FABRIC / TESSUTO (REV.00) 81%VISCOSE, 15%LINEN, 4%POLYESTER



EN 1021-1/2. BS 5852 PART 1. IMO FTP CODE 2010 PART 8

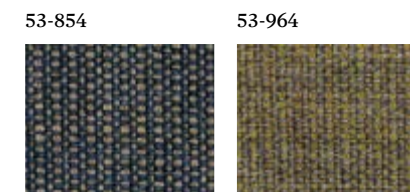
Colour tones may vary from one dye lot to another / I colori possono variare da una partita all'altra

52 DIVINA FABRIC / TESSUTO (REV.00) 100%NEW WOOL



AS/NZS 1530.3 – BS 5852 CRIB 5 – BS 5852 PART 1 – DIN 4102 B2 – EN 1021-1/2 - IMO FTP CODE 2010: PART 8 – NFD 60 013 – NFPA 260 – ONORM B1/Q1 – SN 198 898 5.3 WITH TREATMENT – UNI 9175 11M – US CAL. BULL. 117-2013 – NO USE OF BROMINATED FLAME RETARDANTS

53 CANVAS FABRIC / TESSUTO (REV.00) 90%NEW WOOL, WORSTED, 10%NYLON

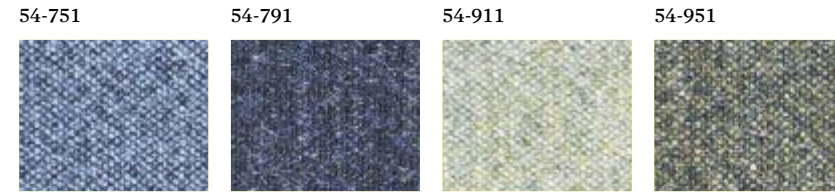
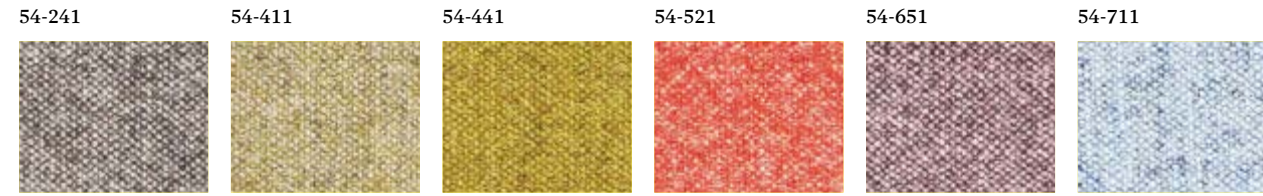


AS/NZS 1530.3 – BS 5852 CRIB 5 WHEN FLAMEPROTECTED – BS 5852 IGNITION SOURCE 3 – BS 5852 PART 1 – DIN 4102 B2 – IMO FTP CODE 2010: PART 8 – NFD 60 013 – NFPA 260 – ONORM B1/Q1 – SN 198 898 5.3 WITH TREATMENT – UNI 9175 11M – US CAL. BULL. 117-2013

Colour tones may vary from one dye lot to another / I colori possono variare da una partita all'altra

54 MELANGE NAP FABRIC / TESSUTO (REV.00)

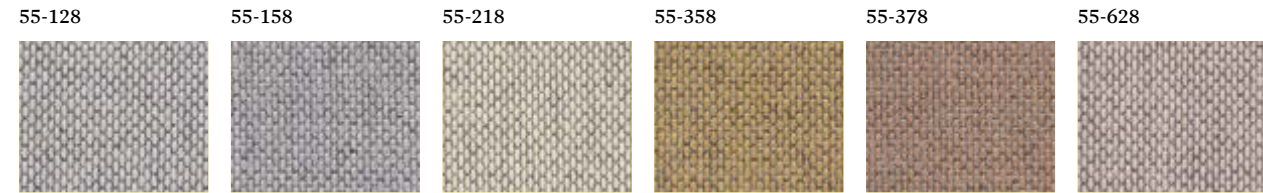
97%NEW WOOL,WORSTED,3%NYLON



BSB 5852 CRIB 5 WITH TREATMENT. BS 5852 IGNITION SOURCE 3. EN 1021-1/2. IMO FTP CODE 2010: PART 8. NF D 60 013. UNI 9175 1IM. US CAL. BULL. 117-2013

55 REWOOL FABRIC / TESSUTO (REV.00)

45%NEW WOOL, WORSTED,45%RECICLED WOOL, 10%NYLON

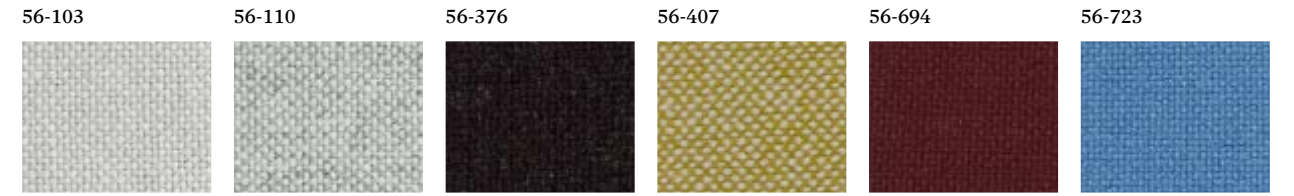


AS/NZS 1530.3,BS 5852 CRIB 5 WITH TREATMENT, BS 5852 IGNITION SOURCE 3, BS 5852 PART 1, EN 1021- 1/2, IMO FTP CODE 2010 PART 8, NF D 60 013, UNI 9175 1IM, US CAL. BULL. 117-2013, ONORM B1/Q1

Colour tones may vary from one dye lot to another / I colori possono variare da una partita all'altra

56 HALLINGDAL FABRIC / TESSUTO (REV.00)

70%NEW WOOL,30%VISCOSE



AS/NZS 1530.3 – AS/NZS 3837 – BS 5852 CRIB 5 – BS 5852 PART 1 – DIN 4102 B2 - EN 1021-1/2 – IMO FTP CODE 2010: PART 8 – NF D 60 013 – NFPA 260 – ONORM B1/Q1 – SN 198 898 5.3 WITH TREATMENT – UNI 9175 1IM - US CAL. BULL. 117-2013

57 FOSS FABRIC / TESSUTO (REV.00)

76%NEW WOOL, WORSTED, 11%VISCOSE,8%,NYLON,5%LINEN



EN 1021-1/2 – BS 5852 PART 1 – IMO FTP CODE 2010: PART 8 – US CAL. BULL. 117- 2013 – BS 5852 CRIB 5 WITH FLAME RETARDANT TREATMENT

Colour tones may vary from one dye lot to another / I colori possono variare da una partita all'altra

33 SATURNO PVC / PVC (REV.00)

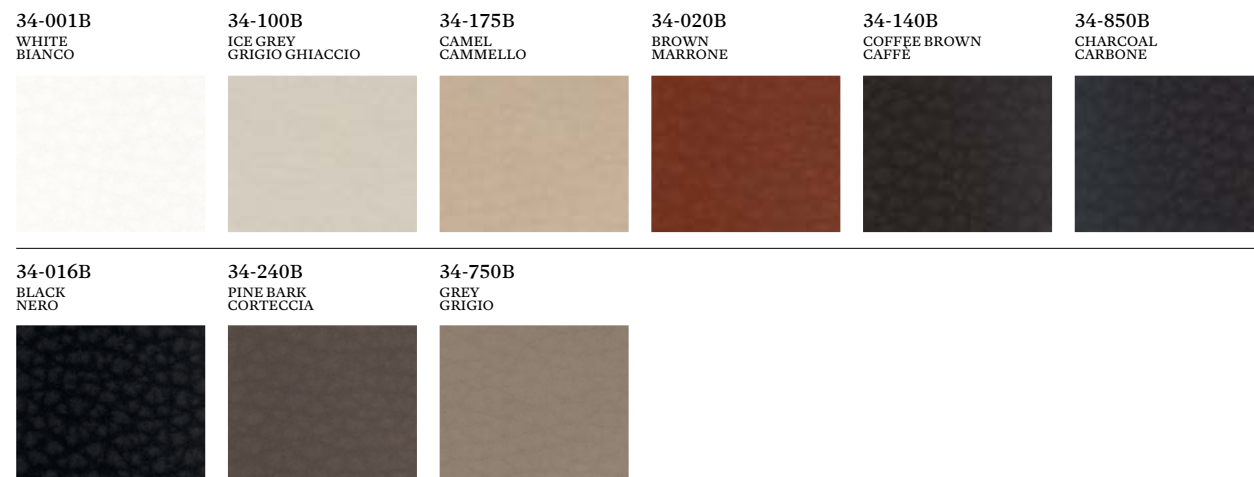
10% CO 20% PES 69% PUI-PVC



UNI 9175/FA1 (11M) IMOFTF CALIFORNIA 117, SECTION E BS 7176/EN 1021 PARTS 1&2 1994
ON REQUEST: CRIB 5 TREATMENT, TEFLON TREATMENT, FMVSS 302 U.S.A.

34 SATURNO VINTAGE PVC / PVC (REV.00)

30% CO 2% PU 68% PVC



UNI 9175/FA1 (11M) IMOFTF CALIFORNIA 117, SECTION E BS 7176/EN 1021 PARTS 1&2 1994
ON REQUEST: CRIB 5 TREATMENT, TEFLON TREATMENT, FMVSS 302 U.S.A.

Colour tones may vary from one dye lot to another / I colori possono variare da una partita all'altra

WOOD / LEGNO (REV.05)



STEEL / ACCIAIO (REV.06)



F36
GOLD
ORO



MARBLE / MARMO (REV.01)



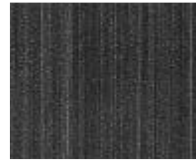
Colour tones may vary from one lot to another / I colori possono variare da una partita all'altra

ALUMINIUM / ALLUMINIO (REV.01)

A11
GLOSSY
LUCIDO



F29
BRUSHED DARK GREY
GRIGIO SCURO SPAZZOLATO

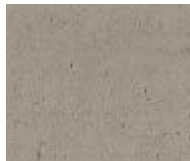


F33
BRUSHED BRASS
OTTONE SPAZZOLATO

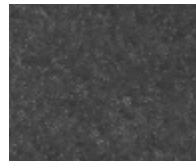


CONCRETE EFFECT (REV.00)

C02
LIGHT GREY
GRIGIO CHIARO



C01
SLATE GREY
GRIGIO ARDESIA



GLASS / CRISTALLO (REV.01)

G02
TEMPERED EXTRACLEAR
EXTRACHIARO
TEMPERATO



G04
TEMP. LACQUERED BLACK
LACCATO NERO
TEMPERATO



G07
TEMPERED SMOKY
FUMÉ TEMPERATO



01/11 FULL GRAIN LEATHER / CUIOIO PIENO FIORE (REV.01)

11-010
BLACK MATT
NERO OPACO



11-611
ESPRESSO MATT
ESPRESSO OPACO



11-455
SEQUOIA MATT
SEQUOIA OPACO



01-201
PINE BARK
CORTECCIA



01-400
NATURAL
NATURALE



01-610
COFFEE BROWN
CAFFÈ



01-613
SEPIA
SEPIA



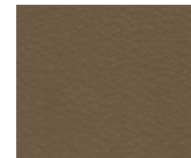
01-700
RUSSIA RED
ROSSO BULGARO



Frag #01/11 is a full-grain vegetable leather, produced with traditional chemical-free tanning techniques. It is a natural product, valued and noted for its light marking, its surface wrinkling and veining, its aroma and its shades of colour. Such features all testify to a prestige product that will gain value over time. This age-old and sturdy material is used to make unique items that are destined to last for generations. Only a small and specially designed selection of our products can be made with this prestige material. It is processed entirely in Italy, where total control of the production process and treatments guarantees quality and durability.

08 FULL GRAIN ANILINE LEATHER / PELLE PIENO FIORE ALL'ANILINA (REV.01)

08-208
MUD BROWN
FANGO



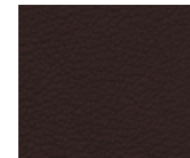
08-215
DARK CHARCOAL
ANTRACITE SCURO



08-445
DARK TAN
CUOIO SCURO



08-610
COFFEE BROWN
CAFFÈ



FRAG #08 FULL GRAIN ANILINE is an extremely fine leather produced from few carefully selected hides of superior quality. It is a full grain leather of European origin, aniline dyed, with no surface finish, to give a completely natural, delicate and elegant look. It is notable for its luxuriant silky feel. Surface markings, grain defects and minor blemishes of various kinds are typical of this product, emphasising its inherent natural elegance. It is processed entirely in Italy, where total control of the production process and treatments guarantees quality and durability. An ideal material for our chairs and sofas. It is available in warm, natural shades. Its particular characteristics mean that it may be damaged by exposure to direct sunlight or heat sources, or stained by spilt liquids.

40 GIOTTO LEATHER / PELLE (REV.00)

40-238
VINTAGE GREY
GRIGIO VINTAGE



40-239
VINTAGE COAL
CARBONE VINTAGE



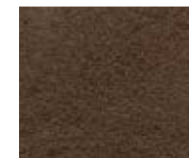
40-454
VINTAGE LEATHER
CUOIO VINTAGE



40-632
VINTAGE TERRA
TERRA VINTAGE



40-633
VINTAGE CHOCOLATE
CIOCCOLATO VINTAGE



FRAG #40 GIOTTO is a leather of European origin with an aged appearance similar to nabuck. This high quality product is produced from a nabuck leather, lightly treated with anilines and abrasives applied by hand to create a retro look. It has a warm, soft, silky texture. Small natural imperfections, such as scars punctures, and marked tonal variations are indications of its high quality and uniqueness. Its particular characteristics mean that it may be damaged by exposure to direct sunlight or heat sources, or stained by spilt liquids.