

# F

## Cuoio pieno fiore

**Composizione: 100% pellame bovino spessore mm 2,8-3 grana lineare, concia vegetale, tinte in botte rifinite all'anilina.**

*Può presentare sulla superficie piccoli segni caratteristici o piccole ferite rimarginate che lungi dall'essere difetti, testimoniano la naturalità del prodotto.*

## Full grain leather

**Composition: 100% cow hide 2,8 to 3 mm thickness linear grain vegetable tanned dye in barrel aniline finishing.**

*Leather may show some evident scars or traces of small healed wounds which, far from being defects, fully testify its natural origin.*

## Cuir pleine fleur

**Composition: 100% peaux de vache de 2,8 à 3 mm d'épaisseur grain linéaire tannage végétal teint en tonneau finition à l'aniline.**

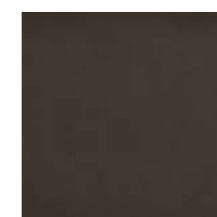
*Des petits signes caractéristiques ou des petites blessures cicatrisées peuvent se présenter qui, loin d'être des défauts, témoignent pleinement son origine naturelle.*



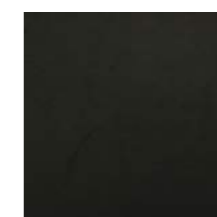
F 102



F 140



F 110



F 101

# FP

## Cuoio vacchetta

**Composizione: 100% pellame bovino spessore mm 2,8-3 grana lineare, concia vegetale, tinte in botte rifinite all'anilina.**

*Può presentare sulla superficie piccoli segni caratteristici o piccole ferite rimarginate che lungi dall'essere difetti, testimoniano la naturalità del prodotto.*

## Cowhide leather

**Composition: 100% cow hide 2,8 to 3 mm thickness linear grain vegetable tanned dye in barrel aniline finishing.**

*Leather may show some evident scars or traces of small healed wounds which, far from being defects, fully testify its natural origin.*

## Cuir de vachette

**Composition: 100% peaux de vache de 2,8 à 3 mm d'épaisseur grain linéaire tannage végétal teint en tonneau finition à l'aniline.**

*Des petits signes caractéristiques ou des petites blessures cicatrisées peuvent se présenter qui, loin d'être des défauts, témoignent pleinement son origine naturelle.*



FP NE



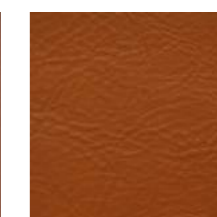
FP TM



FP BU



FP CU



FP CO

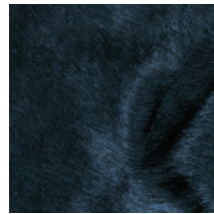


FP NA

# CV

## Simil cavallino (mucca)

Composizione: 100% pellame bovino spessore mm 1,8/2,0.



VC 101



V CTR

## Faux pony hide (cow)

Composition: 100% cow hide thickness mm 1,8 / 2,0.

## Faux poulain (vache)

Composition: 100% peaux de vache épaisseur mm 1,8 / 2,0.

# C

## Cuoietto

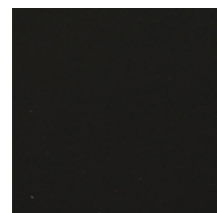
Composizione: 100% pellame bovino spessore mm 1,8/2,0 a grana lineare, concia al cromo.

## Genuine leather

Composition: 100% cow hide thickness mm 1,8/2,0 linear grain, chrome-tanned.

## Cuir véritable

Composition: 100% peaux de vache mm épaisseur 1,8/2,0 grain linéaire, tannage au chrome.



C 101



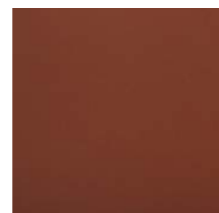
C 102



C 105



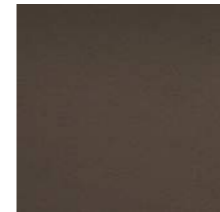
C 106



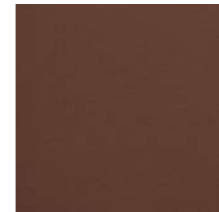
C 107



C 108



C 110



C 111



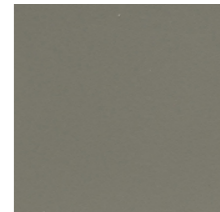
C 113



C 114



C 116



C 119



C 120



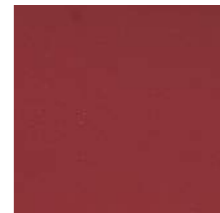
C 121



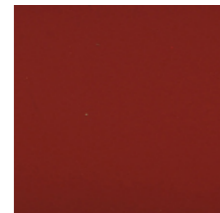
C 122



C 130



C 136



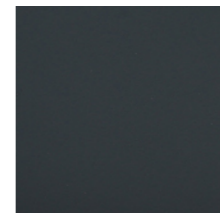
C 137



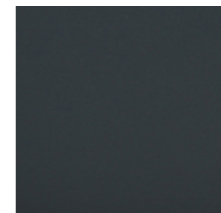
C 138



C 143



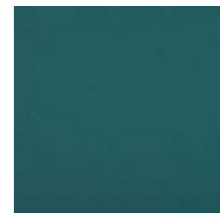
C 151



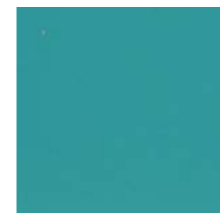
C 152



C 157



C 158



C 159



C 162



C 163



C 164



C 170



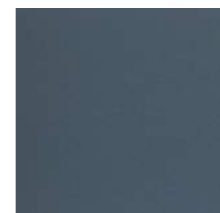
C 171



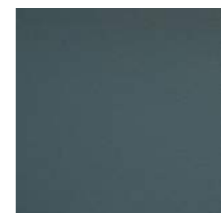
C 177



C 178



C 203



C 204



C 205



C 206



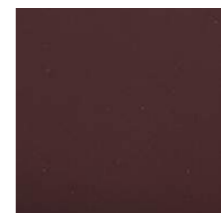
C 207



C 208



C 209



C 210

# E

## Pelle morbida

Composizione: 100% Pelle bovina di provenienza europea mezzo-fiore a grana naturale spessore mm 0,9-1,1 mm.

*Può presentare sulla superficie piccoli segni caratteristici o piccole ferite rimarginate che lungi dall'essere difetti, testimoniano la naturalità del prodotto.*

## Soft leather

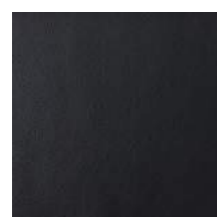
Composition: 100% cow hide natural corrected grain bovine leather made on European hides thickness 0,9-1,1 mm.

*Leather may show some evident scars or traces of small healed wounds which, far from being defects, fully testify its natural origin.*

## Cuir souple

Composition: 100% peaux de vache d'origine européenne - demi fleur - grain naturel épaisseur 0,9-1,1 mm.

*Des petits signes caractéristiques ou des petites blessures cicatrisées peuvent se présenter qui, loin d'être des défauts, témoignent pleinement son origine naturelle.*



E 101



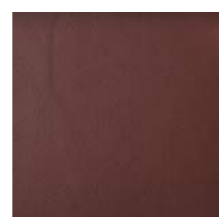
E 102



E 105



E 106



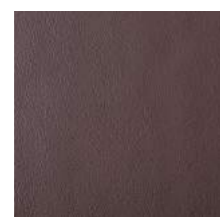
E 107



E 108



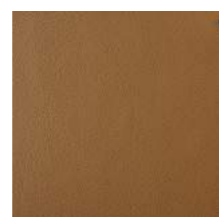
E 110



E 111



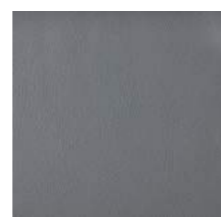
E 113



E 114



E 116



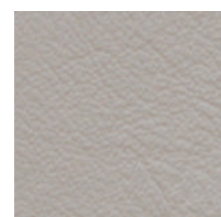
E 119



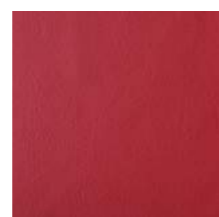
E 120



E 121



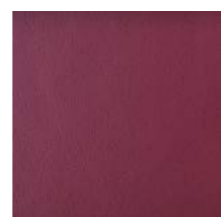
E 122



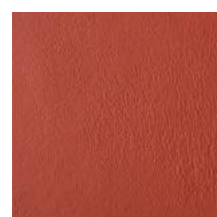
E 130



E 136



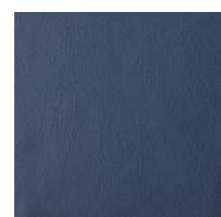
E 137



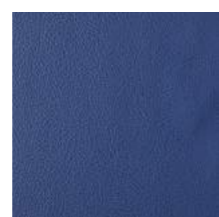
E 138



E 143



E 151



E 152



E 157



E 158



E 159



E 162



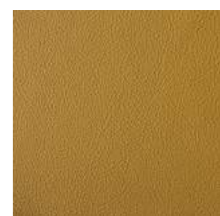
E 163



E 164



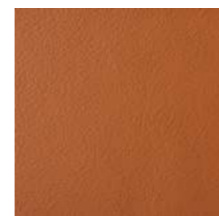
E 170



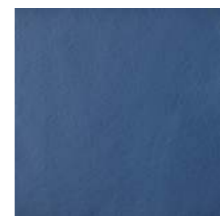
E 171



E 177



E 178



E 203



E 204



E 205



E 206



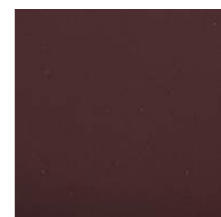
E 207



E 208



E 209



E 210



**Ignifugo** / Fire resistant / Resistant au feu  
 Class 1IM; California bull 117 E BS 5852;  
 EN 1021 - IMO

**A**

**7B**

**Eco-pelle**

**Eco-leather**

**Eco-cuir**

**Burbujas (eco-pelle)**

**Burbujas (eco-leather)**

**Burbujas (eco-cuir)**

Composizione: 65% Pvc - 30% PL - 5% Fibre Sintetiche

Composition: 65% Pvc - 30% PL - 5% Synthetic fibers

Composition: 65% Pvc - 30% PL - 5% Fibres synthétiques



A 101



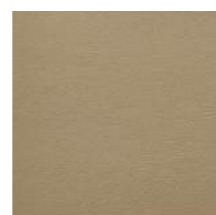
A 102



A 104



A 110



A 113



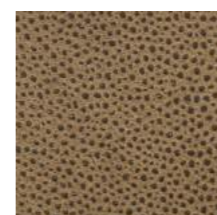
A 118



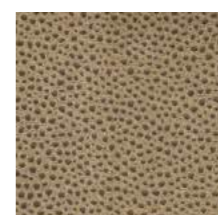
7B 01



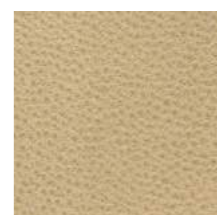
7B 02



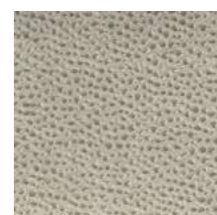
7B 03



7B 04



7B 05



7B 06



A 120



A 126



A 127



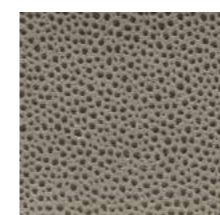
A 129



A 139



A 146



7B 07



7B 08



A 148



A 156



A 168



A 182



A 192





# 9X

## Silvertex (eco-pelle)

Composizione: 100% Composto di vinile; 100% Poliestere Hi-loft; TM backing

**SILVERGUARD:** protezione di ioni d'argento. Una difesa naturale ed ecologica contro i batteri. **PERMABLOCK:** è un trattamento protettivo testato e situato all'interno del vinile per creare una barriera contro i germi, batteri, abrasioni e macchie.

Alcuni coloranti di vestiti o di accessori (come quelli utilizzati nei jeans denim) possono migrare verso colori più chiari. Questo fenomeno è incrementato dall'umidità e dalle temperature ed è irreversibile. Il Fabbricante non si assume alcuna responsabilità per il trasferimento di colorante causato da contaminanti e possibili macchie permanenti causate da questo fenomeno.



9X 01 9X 02 9X 03 9X 04 9X 05 9X 06 9X 07 9X 08 9X 09 9X 10 9X 11 9X 12 9X 13 9X 14 9X 15 9X 16 9X 17 9X 18

## Silvertex (eco-leather)

Composition: 100% Vinyl-compound; 100% Polyester Hi-loft; TM backing

**SILVERGUARD:** silver ions protection. A natural and ecological defense against bacteria. **PERMABLOCK:** it is a tested protective treatment which is located within the vinyl to create a barrier against germs, bacteria, scratches and stains.

Some dyes of clothes or accessories (such as those used in denim jeans) can migrate to lighter colors. This phenomenon is increased by humidity and temperature and is irreversible. The Manufacturer assumes no responsibility for the dye transfer caused by contaminants and possible permanent stains caused by this phenomenon.

## Silvertex (eco-cuir)

Composition: 100% Composé de vinyle; 100% Polyester Hi-loft; TM backing

**SILVERGUARD:** protection des ions argent. Une défense naturelle et écologique contre les bactéries. **PERMABLOCK:** c'est un traitement de protection testé qui est situé dans le vinyle pour créer une barrière contre les germes, les bactéries, les rayures et les taches.

Certains colorants de vêtements ou accessoires (comme ceux utilisés dans les jeans) peuvent migrer vers des couleurs plus claires. Ce phénomène est augmenté par l'humidité et la température et est irréversible. Le fabricant n'assume aucune responsabilité pour le transfert de colorant causé par les contaminants et les taches permanentes possibles causées par ce phénomène.

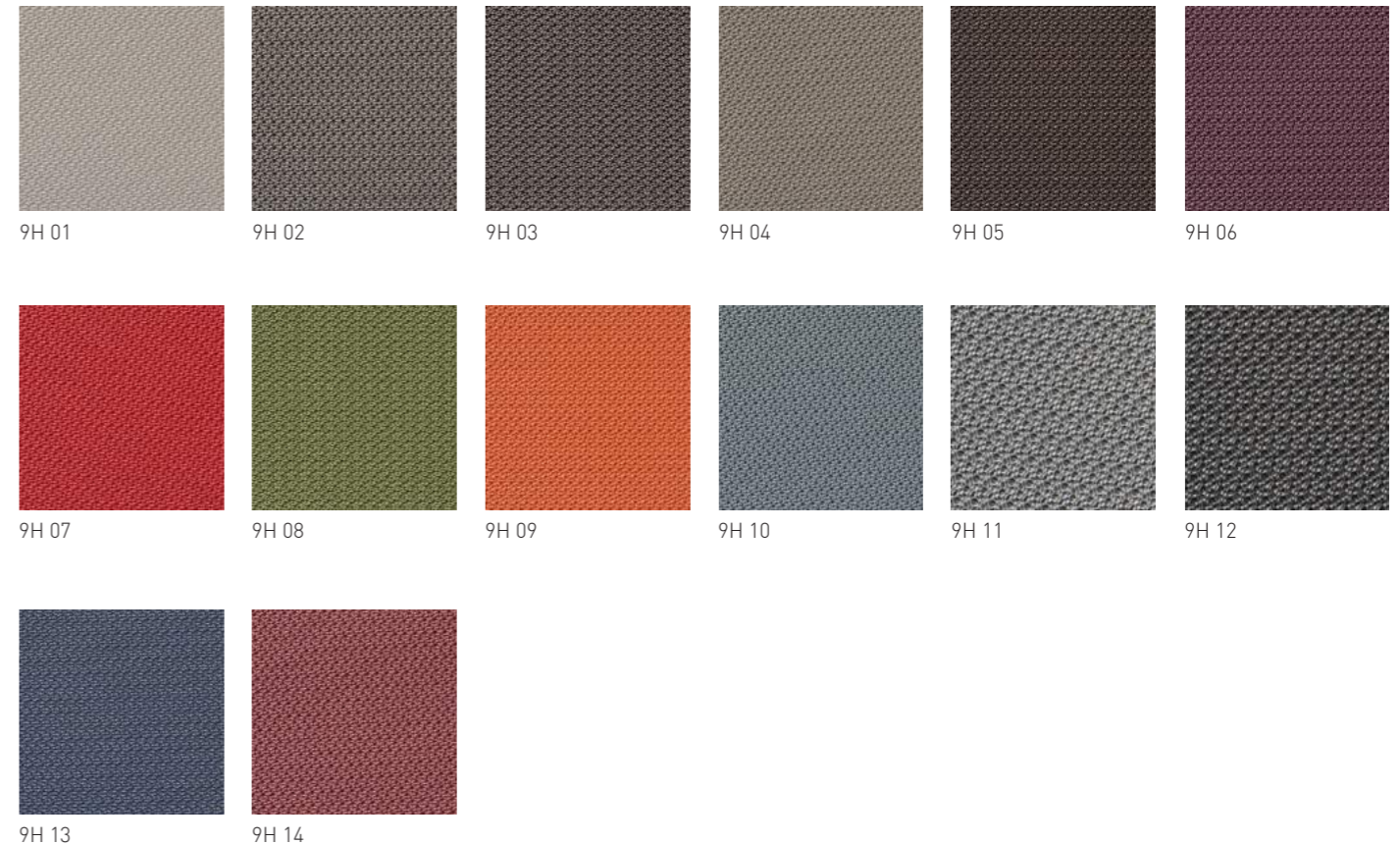


**Ignifugo** / Fire resistant / Resistant au feu  
Class EN 1021-1/2; California bull 117-sez.E  
BS5852 EN 1021

# 9H

## Himalaya (eco-pelle)

Composizione: 100% Composto di vinile; 100% Poliestere Hi-loft; TM backing



9H 01 9H 02 9H 03 9H 04 9H 05 9H 06 9H 07 9H 08 9H 09 9H 10 9H 11 9H 12 9H 13 9H 14

## Himalaya (eco-leather)

Composition: 100% Vinyl-compound; 100% Polyester Hi-loft; TM backing

## Himalaya (eco-cuir)

Composition: 100% Composé de vinyle; 100% Polyester Hi-loft; TM backing



# M

## Trapuntato

Composizione: 100% Composto di vinile; 100% Poliestere Hi-loft; TM backing

## Quilted

Composition: 100% Vinyl-compound; 100% Polyester Hi-loft; TM backing

## Matelassé

Composition: 100% Composé de vinyle; 100% Polyester Hi-loft; TM backing



M 01



M 02



M 11



M 14



M 18



Athena [M]



Bea [M]



Arka [M]



Arka - SG [M]



Beo [M]



Kim [M]



Lena [M] - fronte / front / front



Lena [M] - retro / rear / arrière



Lolos - SG [M] - fronte / front / front



Lolos - SG [M] - retro / rear / arrière



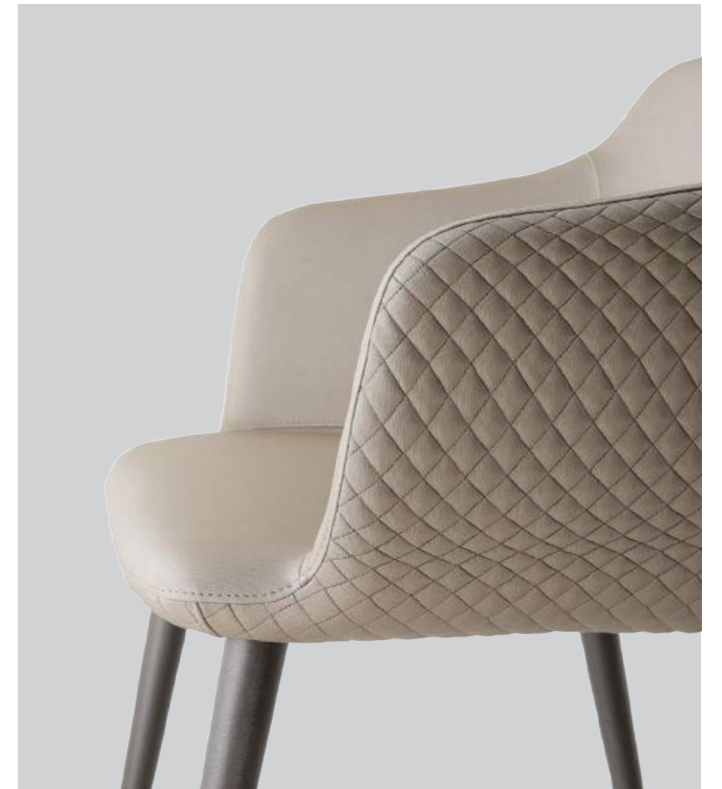
Lolos [M] - fronte / front / front



Lolos [M] - retro / rear / arrière



Lia [M]



Olimpia [M]





Maryl [M] - fronte / front / front



Maryl [M] - retro / rear / arrière



Maryl SG [M] - fronte / front / front



Maryl SG [M] - retro / rear / arrière



**Ignifugo** / Fire resistant / Résistant au feu  
 Class EN 1021-1/2; California bull 117-sez.E  
 BS5852 EN 1021

# 9L

## Sweet Life (tessuto)

Composizione: 100% Poliestere

## Sweet Life (textile)

Composition: 100% Polyester

## Sweet Life (textile)

Composition: 100% Polyester



9L 02



9L 06



9L 07



9L 08



9L 10



9L 11



9L 12



9L 13



9L 14



9L 15

# D

## Delta

Composizione: 38% Vinile; 24% Poliestere;  
 20% Co.; 18% Li.

## Delta

Composition: 38% Vinyl; 24% Polyester; 20%  
 Co.; 18% Li.

## Delta

Composition: 38% Vinyl; 24% Polyester; 20%  
 Co.; 18% Li.



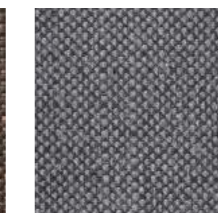
05



08



12



31



# 7G

## Giove

Composizione: 100% Poliestere



7G 01



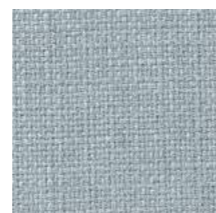
7G 02



7G 03



7G 05



7G 06



7G 07



7G 09



7G 10



7G 11



7G 19



7G 22



7G 30



7G 37



7G 43



7G 51



7G 57



7G 63

## Giove

Composition: 100% Polyester

## Giove

Composition: 100% Polyester

## Essenze

Essenze pregiate che offrono una ricchezza di colori, di sfumature e di venature che fanno di ogni oggetto un pezzo unico, irripetibile, grazie all'impiallacciatura ricavata da un vero tronco dell'essenza. Ogni albero presenta sempre colori e venature diverse che si rispecchiano sul prodotto finito - non si accettano pertanto reclami per pezzi forniti i cui colori non corrispondano ai campioni illustrati.

**Manutenzione:** È consigliabile eseguire la pulizia utilizzando prodotti neutri. Evitare prodotti contenenti alcol, acetone, cloro, prodotti abrasivi e cere per mobili.

## Timbers

A collection of premium woods which offers a rich variety of colors, grains and shades. Each item is unique and unrepeatable thanks to the veneer obtained straight from the wood. Being each tree different in terms of colors and veins, the characteristics of the final objects may differ from the sample shown hereby. Please note that no complaints will be accepted regarding such matching differences.

**Care:** for cleaning it is recommended the use of neutral products. Avoid products that contain alcohol, acetone, chlorine, abrasive products and furniture wax.

## Essences

Une collection de bois exotiques très précieuse et une richesse infinie de couleurs, de nuances et des dessins. Chaque pièce est unique.

**Entretien:** On conseille d'effectuer le nettoyage par des produits neutres. On conseille d'effectuer le nettoyage par des produits neutres. On doit éviter des produits contenant alcool, acétone, chlore, abrasifs et cire pour meubles.



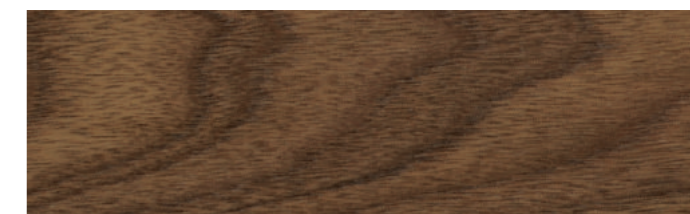
RO 2



FR 8 / FG 8 / RO 8



EBA



NT 1

## Laccati

**LM = Laccatura opaca: vernici poliuretaniche 10 gloss. Uniforme, morbida con copertura totale il legno non è visibile;**

**LL = Laccatura lucida: fondo poliestere e spazzolatura finale - 80 gloss;**

**R = Laccatura a poro aperto: è possibile solo su articoli in rovere R o frassino FR - la vena del legno rimane visibile.**

*Manutenzione: Proteggere i tavoli dal calore, umidità o oggetti colorati (es: vasi, candele). Proteggere sempre la superficie quando si utilizzano strumenti appuntiti. Proteggere la superficie dalla luce diretta del sole ed evitare di coprirli parzialmente con tovaglie, sovrappiattoli o altro. Pulire con panno morbido leggermente inumidito con acqua saponata ed asciugare con panno asciutto.*

## Laquered finishes

LM = Matt lacquer: polyurethane coat - 10 gloss. Uniform, smooth surface, all covered, not wood visible;

LL = Glossy lacquer: base in polyester & final brushing - 80 gloss;

R = Open grain lacquer: it is possible only on products made of oak or ash - the grain of the wood is visible.

*Care: Always protect table-tops against heat, damp or colored objects (e.g. vases, candles). Always protect the surface when using sharp tools. To preserve the color of the materials keep away from direct sunlight. It is recommended not to partially cover surfaces with tablecloths, etc. Clean the surface with a soft cloth dipped in water with soap solution. Dry with a clean soft tissue.*

## Finitions laquées

M = Laque mat: vernis polyuréthane - 10 gloss. Uniforme, doux à la touche, finition qui couvre toute la surface du bois qui est donc invisible.

LL = Laque brillant: base en polyester et finition brossée - 80 gloss.

R = Laque pore ouvert: possible seulement sur produits en chêne ou frêne - la veine du bois reste visible.

*Entretien: Protéger toujours la table en évitant de poser des objets trop chauds ou trop humides. Mettre toujours un dessous d'assiette/nappe lors du repas. Éviter que la lumière du soleil soit à direct contact de la surface. Ne pas couvrir partiellement le plateau pour éviter d'avoir un effet à taches. Nettoyage: nettoyer la surface avec un chiffon souple et humide, essoré dans de l'eau tiède contenant une lessive neutre et enfin essuyer.*

## Foglia oro e argento

**La doratura e l'argentatura su legno è una tecnica molto antica ed una lavorazione artigianale, ancora oggi, di alto livello. Le foglie "simil oro" e "simil argento" sono finissime e leggere (3-4 micron) e sono composte rispettivamente da rame/zinco ed alluminio. Eventuali puntini, pieghe o rigature sono da considerarsi il pregio del lavoro artigianale.**

*Manutenzione: Per la pulizia, utilizzare semplicemente tessuto inumidito d'acqua. Non utilizzare assolutamente prodotti detergenti e abrasivi.*

## Gold & silver leaves

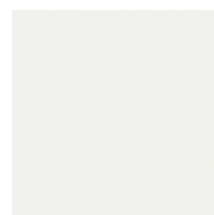
The wood's gilding and silvering is a very ancient technique and, also nowadays, a handicrafts work of high level. The gold and silver leaves are very thin and light (3-4 micron) composed by copper/zinc and aluminium respectively. Little dots, creases, linings have to be considered as graciousity of the handicrafts work.

*Care: To clean, simply use a cloth moistened with water. Do not use detergent products and abrasives.*

## Feuille or et argent

La dorure et l'argenture sur le bois est une technique très ancienne et un travail artisanal, encore de nos jours, d'un niveau très haut. Les feuilles « similor » et « argent faux » sont très fines et légères (3-4 micron) et sont composées respectivement de cuivre/zinc et d'aluminium. On doit considérer éventuels petits points, plis ou rayures comme le prix du travail artisanal.

*Entretien: Pour le nettoyage utiliser simplement du tissu humide. Ne pas utiliser de produits détergents et abrasifs.*



L 20



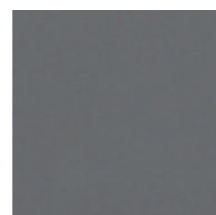
L 21



L 22



L 25



L 32



L 37



R 20



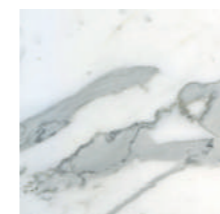
ORO



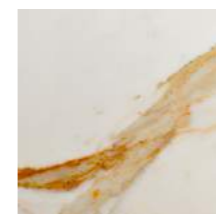
ARG

## Marmo

**Il marmo: protagonista per natura! Calacatta oro e Statuario sono due dei più pregiati marmi Apuani: entrambi con fondo bianco e venature tenui sfumate di colore giallo dorato-bronzo per il primo e grigio per il secondo. Altri marmi possono essere forniti su richiesta. Ogni pietra, essendo un prodotto naturale, è un pezzo unico.**



STATUARIO



CALACATTA ORO



BIANCO CARRARA

## Marble

Marble is a natural born leader! Calacatta gold and Statuario are two of the most precious marbles from Carrara, Italy. Both of them have a white background with light and delicate veins: yellowish-brown-gold for the first and grey for the second. We can also fulfill any special requirement of other kinds of marbles.

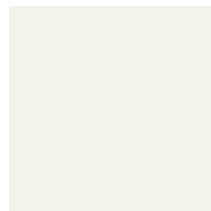
## Marbre

Calacatta or et Statuario sont deux des marbres les plus précieux de Carrare, en Italie. Tous les deux ont un fond blanc avec des veines délicates: brun-or pour le premier et gris pour le second. Autres marbres peuvent être fournis sur demande. Chaque plaque, étant un produit naturel, est une pièce unique



## Corian®

Corian® è un materiale composito ad alte prestazioni funzionali ed estetiche. Ha una gradevole tattilità, è traslucente, molto resistente, non poroso, igienico e facile da pulire, se necessario riparabile. Su richiesta anche in altri colori.



COR

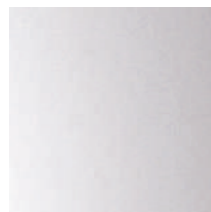
## Corian®

Corian®: the original composite material with a superior combination of functional and aesthetic properties and performances. Pleasant to the touch, highly resistant, translucent, easy to clean and to repair. Upon request, can realize all Corian® colours range.

## Corian®

Corian®: le matériau composite original avec une combinaison supérieure de propriétés esthétiques et fonctionnelles ainsi que des hautes performances. Agréable au toucher, très résistant, translucide, facile à nettoyer et à réparer. Toutes couleurs de la gamme Corian® sont réalisables sur devis.

## Vetro Glass Verre



VT

**Extra chiaro**  
Extra light  
Extra clair

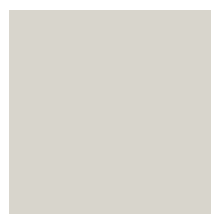


V

**Colore a scelta del cliente**  
Custom colour chosen by client  
Couleur au choix du client

## Metallo

Vernici epossidiche.



02

## Metal

Epoxy coatings.



37

## Metal

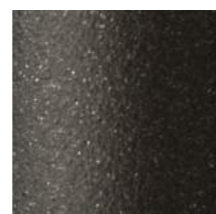
Chrome poli.



CR



08



20



30