

# Categoria A

category A / categorie A

## SPALMATO



## TOUCH



# Categoria B

category B / categorie B

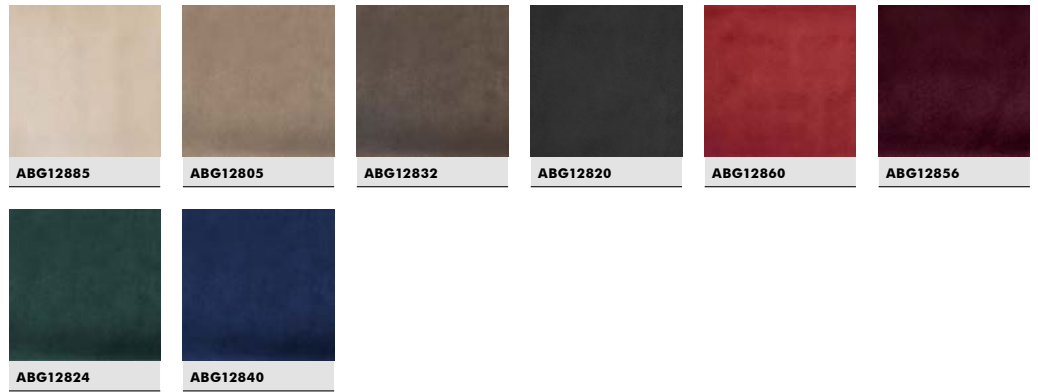
## CAPRI



# Categoria B

category B / categorie B

## EVOLUTION G128



## VELLUTO LUNA



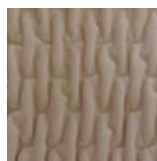
# Categoria C

category C / categorie C

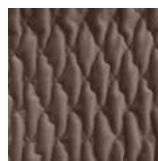
## EVOLUTION G163



ABG16385



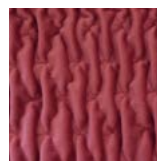
ABG16305



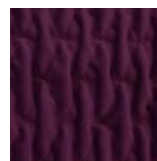
ABG16332



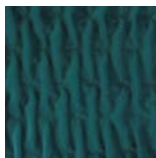
ABG16320



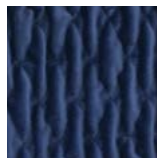
ABG16360



ABG16356



ABG16324



ABG16340

## MAPLE



KVMP862



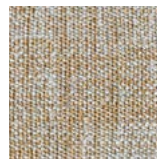
KVMP742



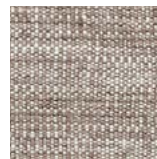
KVMP732



KVMP392



KVMP832



KVMP232

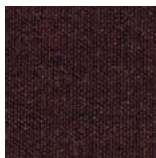


KVMP142

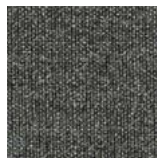


KVMP562

## REMIX (LANA)



TE125



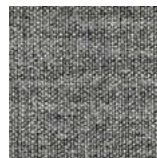
TE126



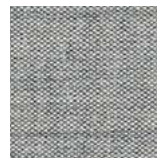
TE127



TE128



TE129

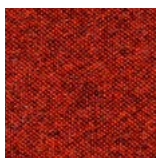


TE130

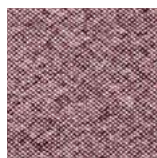
# Categoria D

category D / categorie D

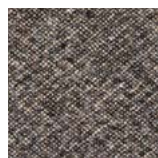
## MELANGE NAP



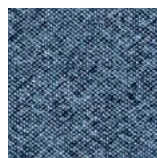
KVMN551



KVMN651



KVMN271



KVMN751



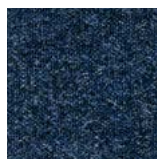
KVMN951



KVMN321



KVMN171



KVMN791

# Categoria D

category D / categorie D

## HERO



rivestimenti  
materials • revêtements

## VELLUTO DI LINO



finiture  
finishes • finitions

# Categoria D

category D / categorie D

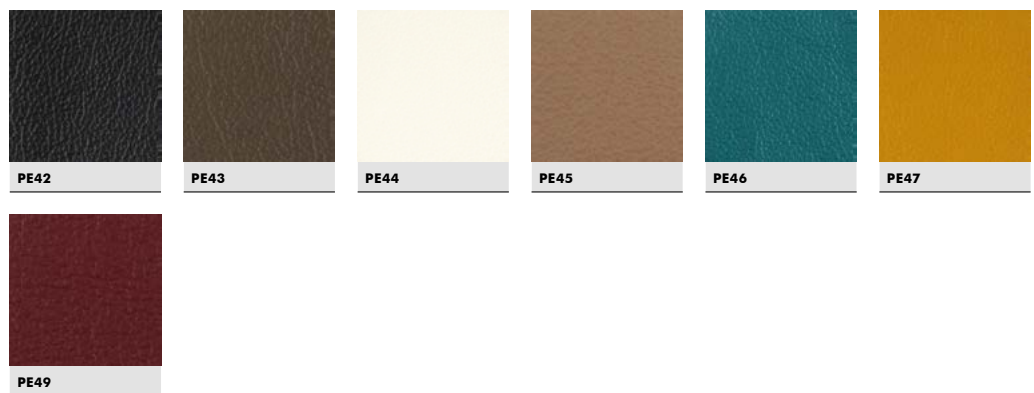
## OMBRA



# Categoria PE

category PE / categorie PE

## PELLE leather/peau





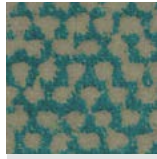
# Categoria S

category S / categorie S

LUCHINO



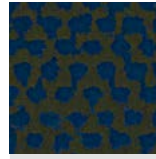
RB30259003



RB30259004



RB30259006



RB30259007

# Categoria CU

category CU / categorie CU

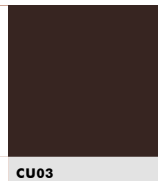
CUOINETTO  
hard leather / cuir



CU01\*



CU02



CU03

\*COLORE IN ESAURIMENTO  
SU RICHIESTA  
available on request  
disponible sur demande

**POLIPROPILENE . POLIETILENE . HIREK**

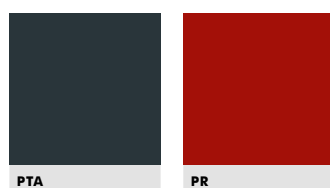
polypropylene . polyethylene . hirek finishes / polypropylene . polyethylene . hirek



BL-L1-R1-VI-VA: FINITURA IN ELIMINAZIONE / finish in low stock / finition jusqu'à épuisement du stock

**FINITURE POLIURETANO**

polyurethane finishes / finitions polyurethane

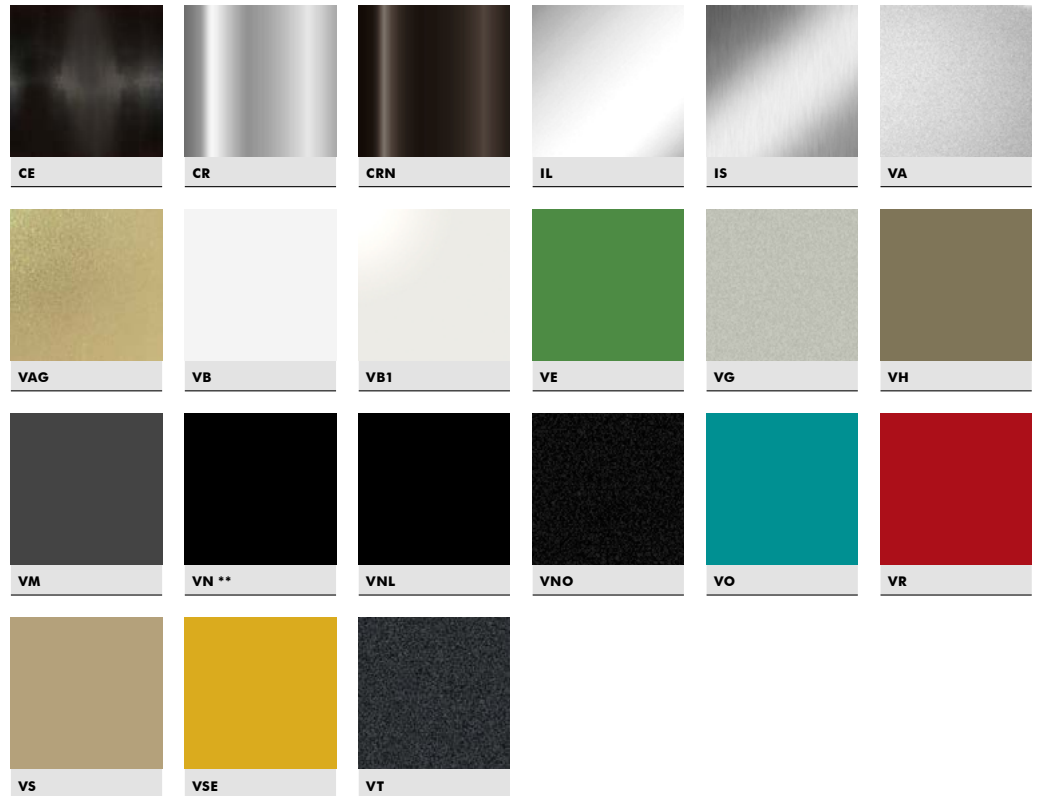


## FINITURE METALLI

metal finishes / finitions métaux



Verniciatura poliestere  
Polyester painted / Verni polyester



rivestimenti  
materials • revêtements

## FINITURE ALLUMINIO

aluminium finishes / finitions aluminium

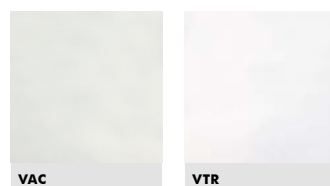


Anodizzazione sui colorati  
Anodization for colors / Éloxage  
pour les couleurs



## FINITURE VETRO

glass finishes / finitions verre





## FINITURE LEGNI & MDF

wood & mdf finishes / finitions bois & mdf

I NOSTRI LEGNI SONO CERTIFICATI PEFC: tale marchio attesta che i legni utilizzati per la produzione rispondono a determinati requisiti di sostenibilità e gestione forestale responsabile.

OUR WOODS ARE PEFC CERTIFIED: this label certifies that the woods we use in production meet specific requirements of "sustainability" and responsible forest management.

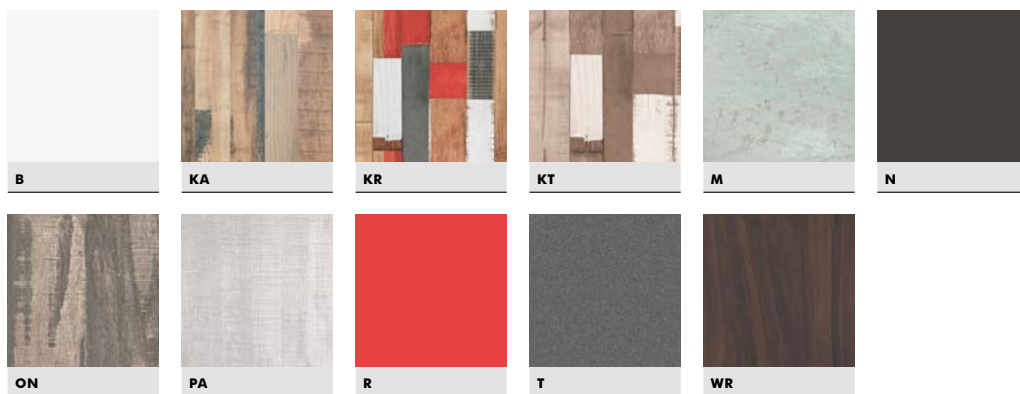
NOS BOIS SONT CERTIFIES PEFC, qui en atteste la provenance depuis des forets a gestion eco responsable



LE08-LE17-LE20: FINITURA IN ELIMINAZIONE / finish in low stock / finition jusqu'à épuisement du stock

## FINITURE RESINA

resin finishes / finition resine



## FINITURE HPL & SOLID CORE

hpl & solid core finishes / finitions hpl & solid core



\*\* = SOLO HPL / only for hpl / seulement pour hpl

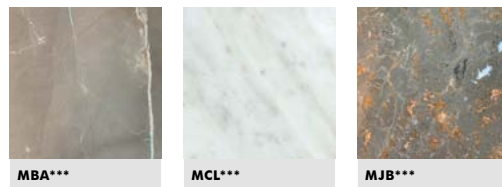
## FINITURE LAMINATO & NOBILITATO

laminated & melamine finishes / finition laminé & anobli



## FINITURE MARMO

marble finishes / finitions marbre



\*\*\*LA TONALITÀ DELLE SUPERFICI IN PIETRA NATURALE PUÒ VARIARE SU OGNUNO DEI PEZZI PRODOTTI/ the nuance of the surfaces in natural stone change on every piece produced / la tonalité des surfaces en marbre peut varier sur chacune des pièces produites

## FINITURE NYLON

nylon finishes / finition nylon



## FINITURE POLICARBONATO

polycarbonate finishes / finition polycarbonate



\*si sconsiglia l'esposizione alla salsedine

\*not recommended exposure to saltiness

\*Exposition en bord de mer ou en localités a très haute salinité déconseillée

