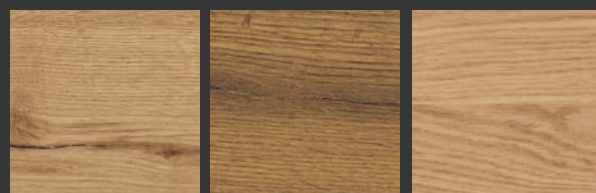




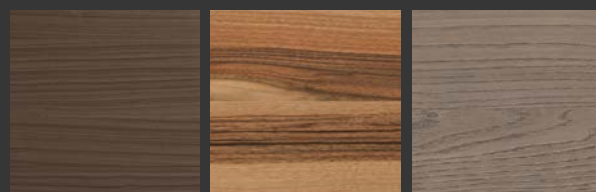
finiture / finishes

## essenze

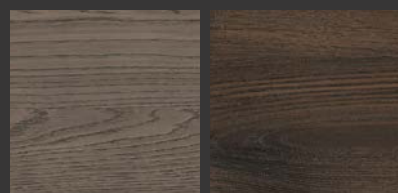
Wood-effect finishes / Oberflächen mit Holzeffekt  
Finitions effet bois / Acabados efecto madera



Rovere Cadore    Rovere Antico    Rovere Nodi



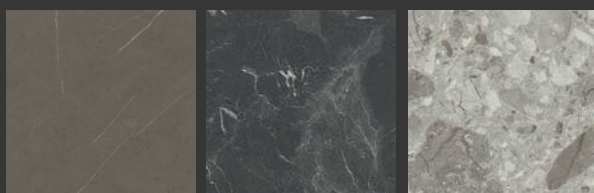
Noce Canaletto    Noce Italiano    Castagno  
Light Grey



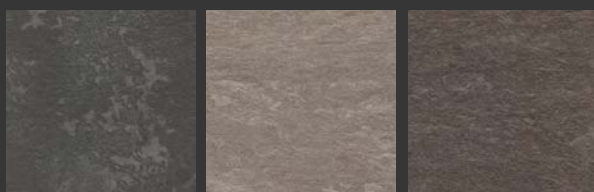
Castagno  
Dark Grey    Castagno Smoke

## laminati unicolor hpl

Unicolor HPL / Laminat Unicolor HPL  
Stratifiés Unicolor HPL / Laminados unicolor HPL



Tobacco    Impero    Mailand



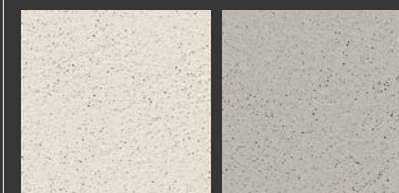
Ardesia    Evora Ecrù    Evora Vulcano



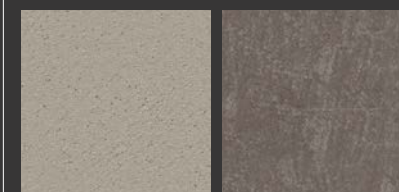
Cemento    Porfido

## ecomalta

Ecomalta / Ecomalta  
Ecomalta / Ecomalta



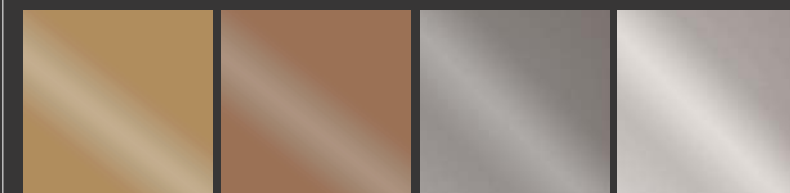
Crema    Ghiaia



Ecrù    Fango

## laccati metal color opachi

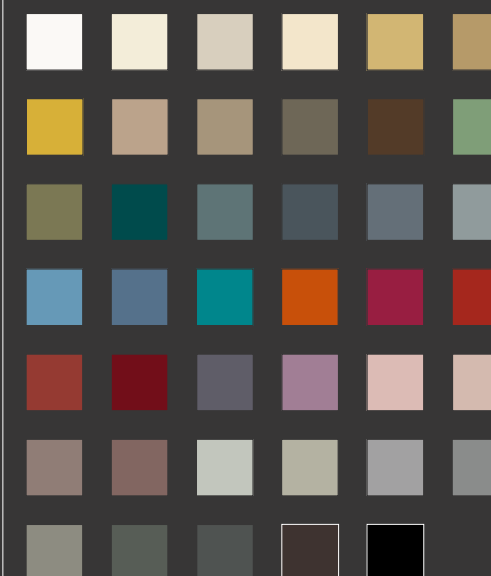
Metal color matt lacquers / Matte Lackausführungen metal  
Laqués Metal Color mats / Lacados mate de color metálico



Oro    Rame    Titanio    Bianco Perlato

## laccati opachi e lucidi

Matt and glossy lacquers  
Glänzende Lackausführungen  
Laqués mats et brillants  
Lacados mate y brillantes

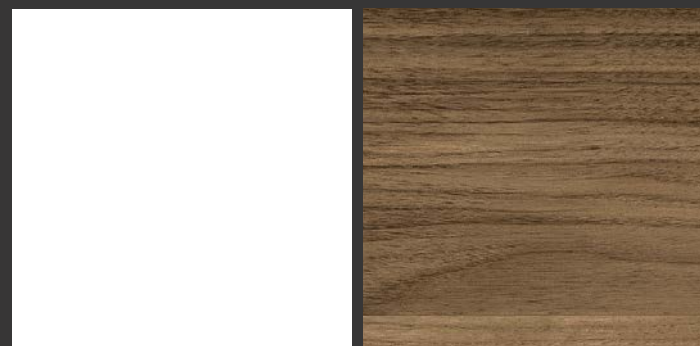




finiture / finishes

## finiture polimeriche

*Polymer finishes*  
*Polymer-Ausführungen*  
*Finitions polymères*  
*Acabados poliméricos*



Bianco

Noce

## laccati metal color opachi

*Metal color matt lacquers*  
*Matte Lackausführungen metal*  
*Laqués Metal Color mats*  
*Lacados mate de color metálico*



Oro

Rame

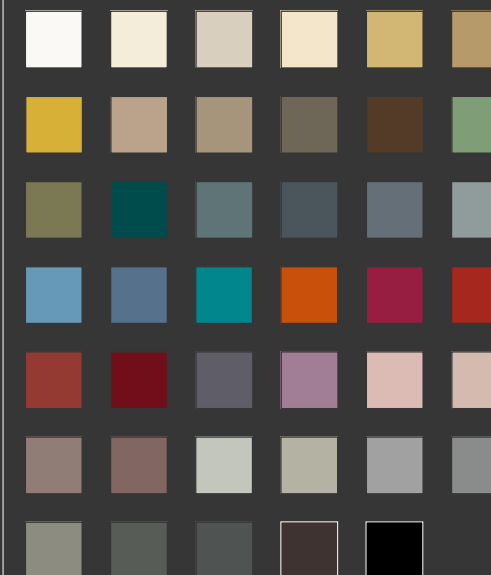


Titanio

Bianco Perlato

## laccati opachi e lucidi

*Matt and glossy lacquers*  
*Glänzende Lackausführungen*  
*Laqués mats et brillants*  
*Lacados mate y brillantes*

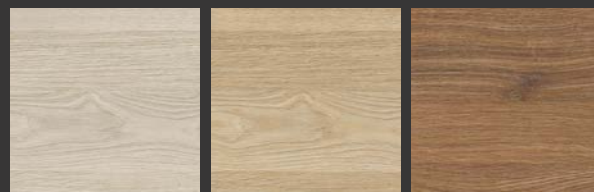




## finiture / finishes

### essenze

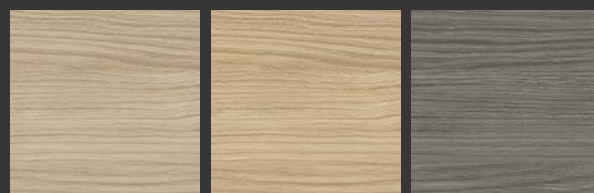
Wood-effect finishes / Oberflächen mit Holzeffekt  
Finitions effet bois / Acabados efecto madera



Rovere Tennis

Rovere Polo

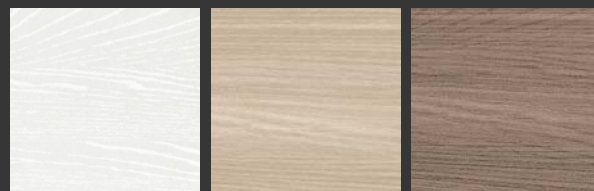
Rovere Fight



Rovere Borneo

Rovere Congo

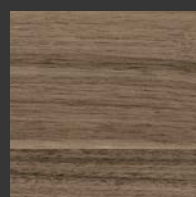
Rovere Papua



Olmo Bianco

Olmo Panna

Olmo Nocciola



Noce

### effetto cemento

Concrete effect / Betoneffekt  
Effet ciment / Efecto cemento



Kiruna

Kena

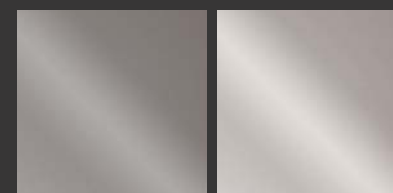
### laccati metal color opachi

Metal color matt lacquers  
Matte Lackausführungen metal  
Laqués Metal Color mats  
Lacados mate de color metálico



Oro

Rame

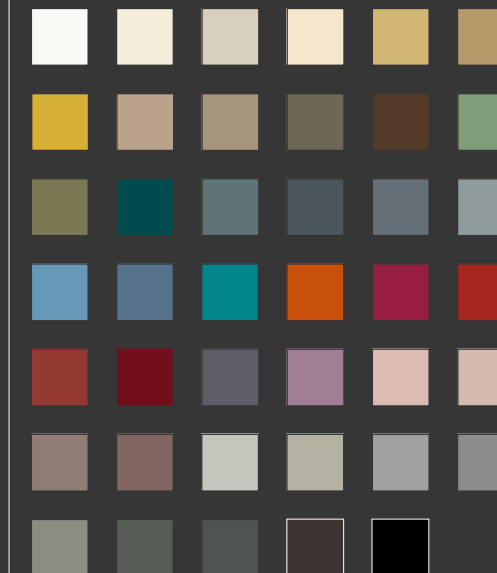


Titanio

Bianco Perlato

### laccati opachi e lucidi

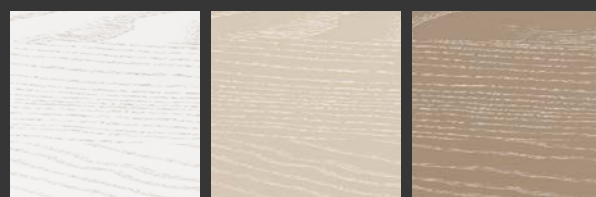
Matt and glossy lacquers  
Glänzende Lackausführungen  
Laqués mats et brillants  
Lacados mate y brillantes



finiture / finishes

## frassino laccato opaco decapè a poro aperto

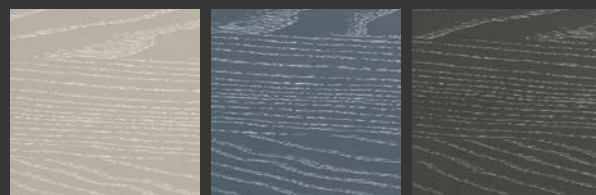
*Matt lacquered ash wood, open-pore pickled finish / Esche offenporig gebeizt und matt lackiert*  
*Frêne laqué mat décapé à pore ouvert / Fresno lacado mate, decapado de poro abierto*



Bianco

Sahara

Cappuccino



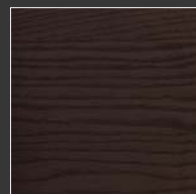
Grigio Seta

Azzurro India

Grigio Traffico

## frassino tinto wengè

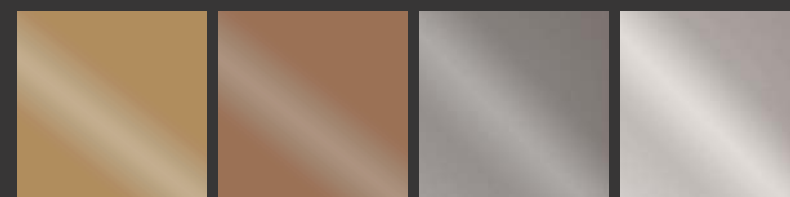
*Wenge stained ash wood / Esche wengefarben*  
*Frêne teinté wengé / Fresno teñido wengué*



Frassino tinto Wengè

## laccati metal color opachi

*Metal color matt lacquers / Matte Lackausführungen metal*  
*Laqués Metal Color mats / Lacados mate de color metálico*



Oro

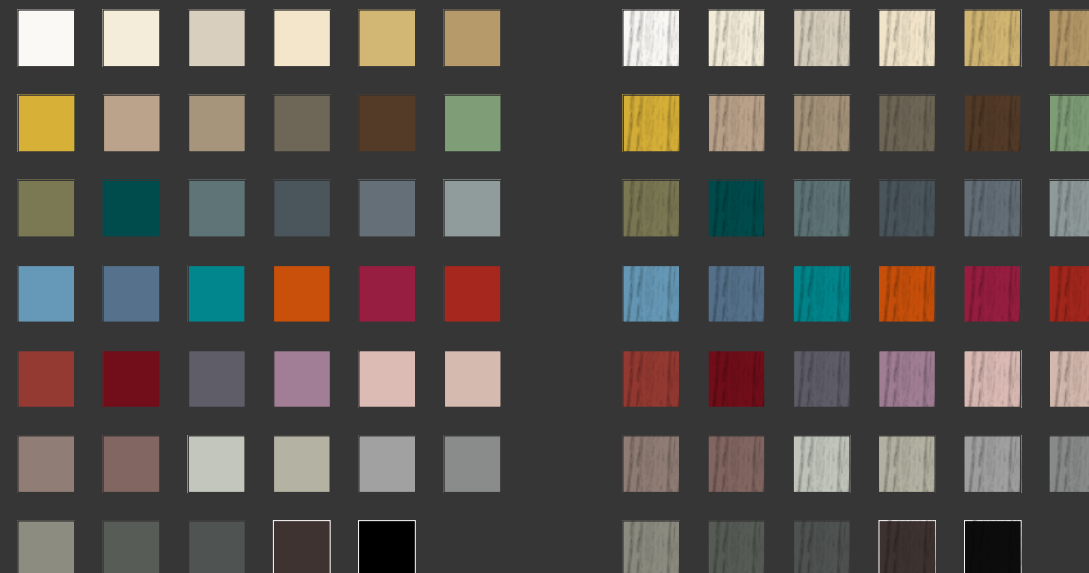
Rame

Titanio

Bianco Perlato

## laccati opachi su finitura liscia e laccati opachi su finitura rovere a poro aperto

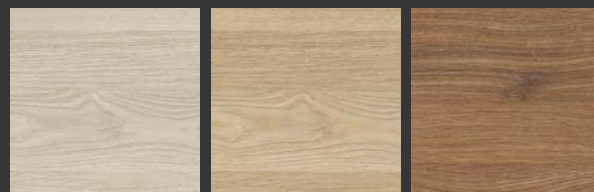
*Matt lacquers (plain finish) and matt lacquers (open-pore oak finish) / Matte Lackausführungen auf glatter Oberfläche und matte Lackausführungen auf offenporiger Eichenholzoberfläche*  
*Laqués mats (finition lisse) et laqués mats (finition chêne à pore ouvert) / Lacados mate en acabados lisos; lacados mate en acabado roble de poro abierto*



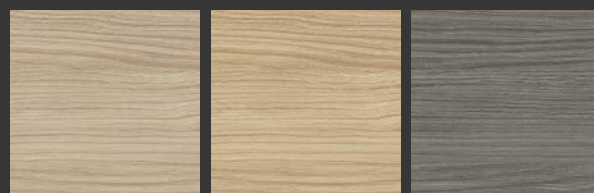
finiture / finishes

essenze

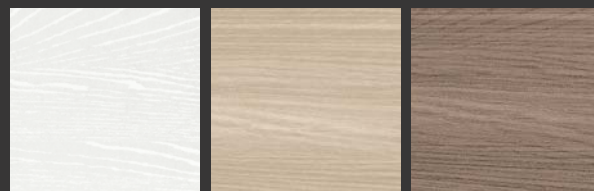
Wood-effect finishes  
Oberflächen mit Holzeffekt  
Finitions effet bois  
Acabados efecto madera



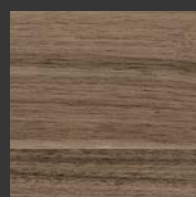
Rovere Tennis    Rovere Polo    Rovere Fight



Rovere Borneo    Rovere Congo    Rovere Papua



Olmo Bianco    Olmo Panna    Olmo Nocciola



Noce

effetto cemento

Concrete effect  
Betoneffekt  
Effet ciment  
Efecto cemento



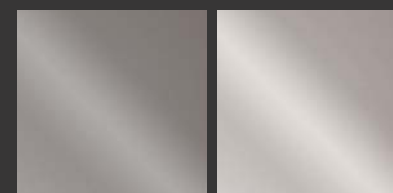
Kiruna    Kena

laccati metal color opachi

Metal color matt lacquers  
Matte Lackausführungen metal  
Laqués Metal Color mats  
Lacados mate de color metálico



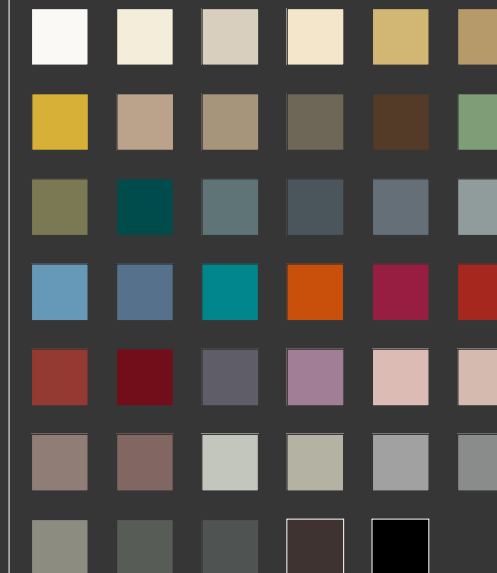
Oro    Rame



Titanio    Bianco Perlato

laccati opachi e lucidi

Matt and glossy lacquers  
Glänzende Lackausführungen  
Laqués mats et brillants  
Lacados mate y brillantes

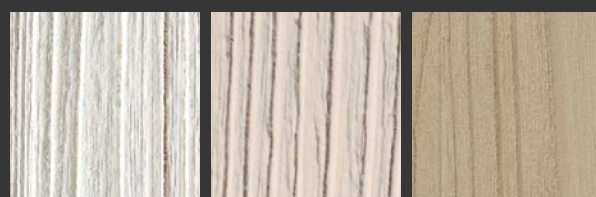




## finiture / finishes

### essenze

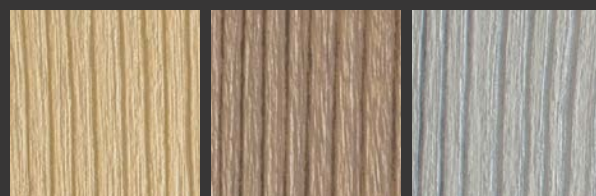
Wood-effect finishes / Oberflächen mit Holzeffekt  
Finitions effet bois / Acabados efecto madera



Teak Sabbiato  
Bianco

Teak Sabbiato  
Avorio

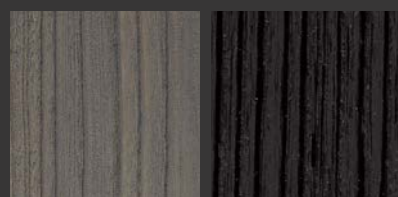
Teak Sabbiato  
Marmotta



Teak Sabbiato  
Naturale

Teak Sabbiato  
Canapa

Teak Sabbiato  
Cenere

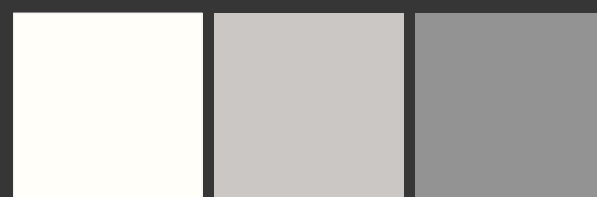


Teak Sabbiato  
Piombo

Teak Sabbiato  
Nero

### fenix ntm

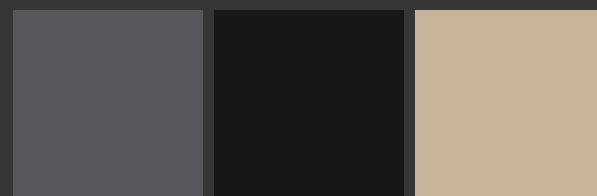
Fenix NTM / Fenix NTM  
Fenix NTM / Fenix NTM



Bianco Kos

Grigio Efeso

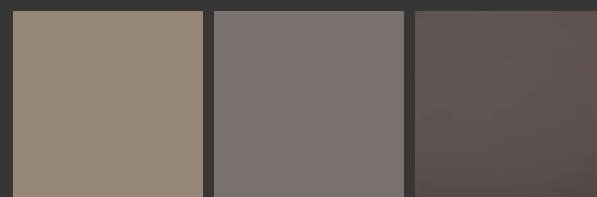
Grigio Antrim



Grigio Bromo

Nero Ingo

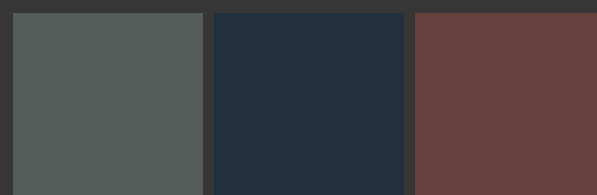
Beige Luxor



Castoro Ottawa

Grigio Londra

Cacao Orinoco



Verde Comodoro

Blu Fes

Rosso Jaipur

### laccati metal color opachi su finitura liscia e laccati metal color opachi su finitura teak a poro aperto

Metal color matt lacquers (plain finish); metal color matt lacquers (open-pore teak finish) / Glatte matte Lackausführungen metal und matte Lackausführungen metal auf offenporiger Teak-Oberfläche / Laqués Metal Color mats (finition lisse) et laqués Metal Color mats (finition teak à pore ouvert) / Lacados mate de color metálico en acabado liso y lacados mate de color metálico en acabado de teca de poro abierto



Oro

Rame

Titanio

Bianco  
Perlato

Oro

Rame

Titanio

Bianco  
Perlato

### laccati opachi e lucidi su finitura liscia e laccati opachi su finitura teak a poro aperto

Matt and glossy lacquers (plain finish); matt lacquers (open-pore teak finish) / Glänzende Lackausführungen auf glatter Oberfläche und matte Lackausführungen auf offenporiger Teak-Oberfläche / Laqués mats, brillants (finition lisse) et laqués mats (finition teak à pore ouvert) / Lacados mate, brillantes, en acabado liso y lacados mate en acabado de teca de poro abierto





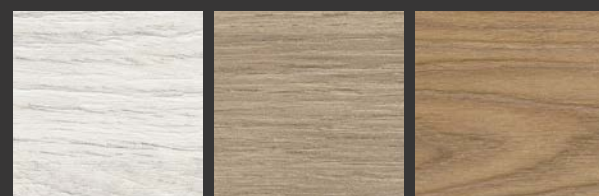


finiture / finishes

## laminati unicolor hpl

*Unicolor HPL / Laminat Unicolor HPL*

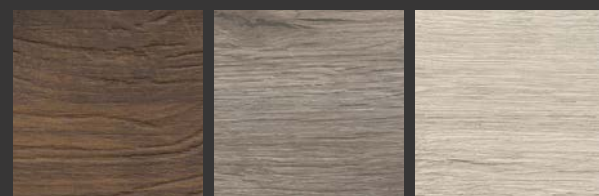
*Stratifiés Unicolor HPL / Laminados unicolor HPL*



Rugby

Yacht

Cricket



Sky

Texas

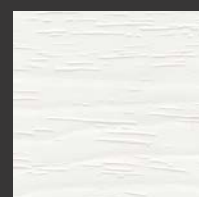
California



Rovere Avana

Olmo

Rovere Bruciato

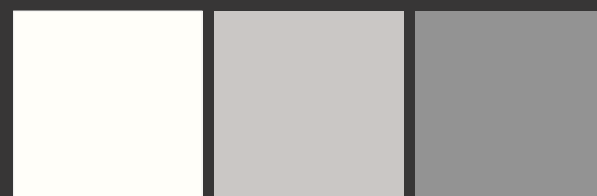


Rovere Bianco Carta

## fenix ntm

*Fenix NTM / Fenix NTM*

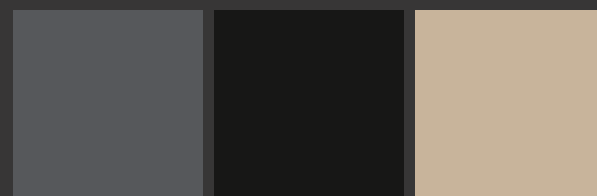
*Fenix NTM / Fenix NTM*



Bianco Kos

Grigio Efeso

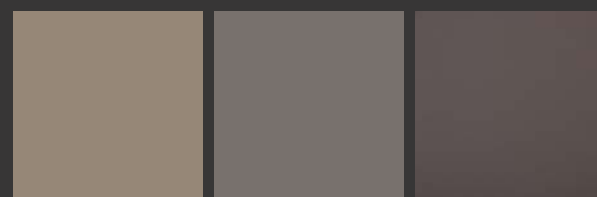
Grigio Antrim



Grigio Bromo

Nero Ingo

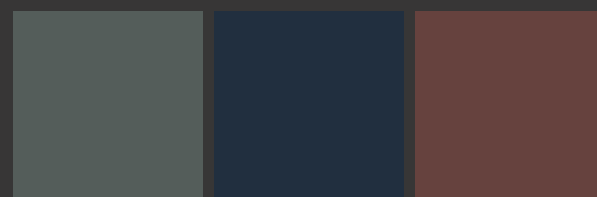
Beige Luxor



Castoro Ottawa

Grigio Londra

Cacao Orinoco



Verde Comodoro

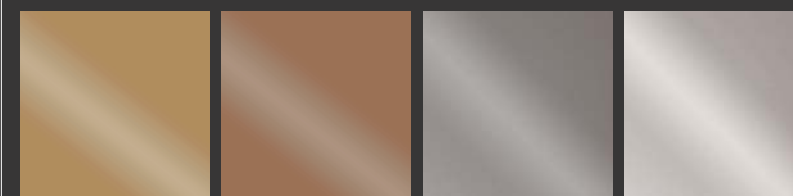
Blu Fes

Rosso Jaipur

## laccati metal color opachi

*Metal color matt lacquers / Matte Lackausführungen metal*

*Laqués Metal Color mats / Lacados mate de color metálico*



Oro

Rame

Titanio

Bianco Perlato

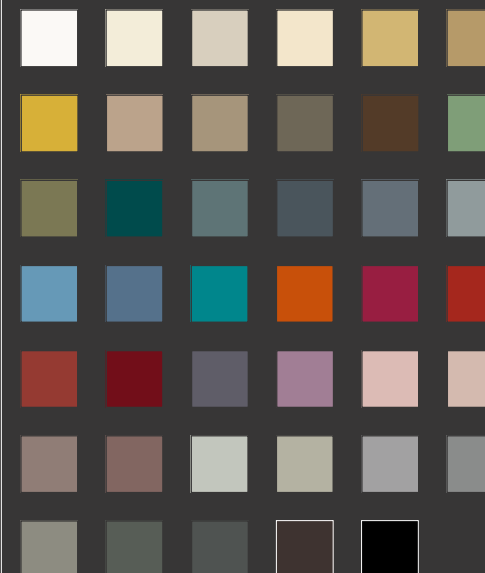
## laccati opachi e lucidi

*Matt and glossy lacquers*

*Glänzende Lackausführungen*

*Laqués mats et brillants*

*Lacados mate y brillantes*



finiture / finishes

essenze

Wood-effect finishes  
Oberflächen mit Holzeffekt  
Finitions effet bois  
Acabados efecto madera



Rovere Moro



Rovere Naturale

laccati metal color opachi

Metal color matt lacquers  
Matte Lackausführungen metal  
Laqués Metal Color mats  
Lacados mate de color metálico



Oro

Rame

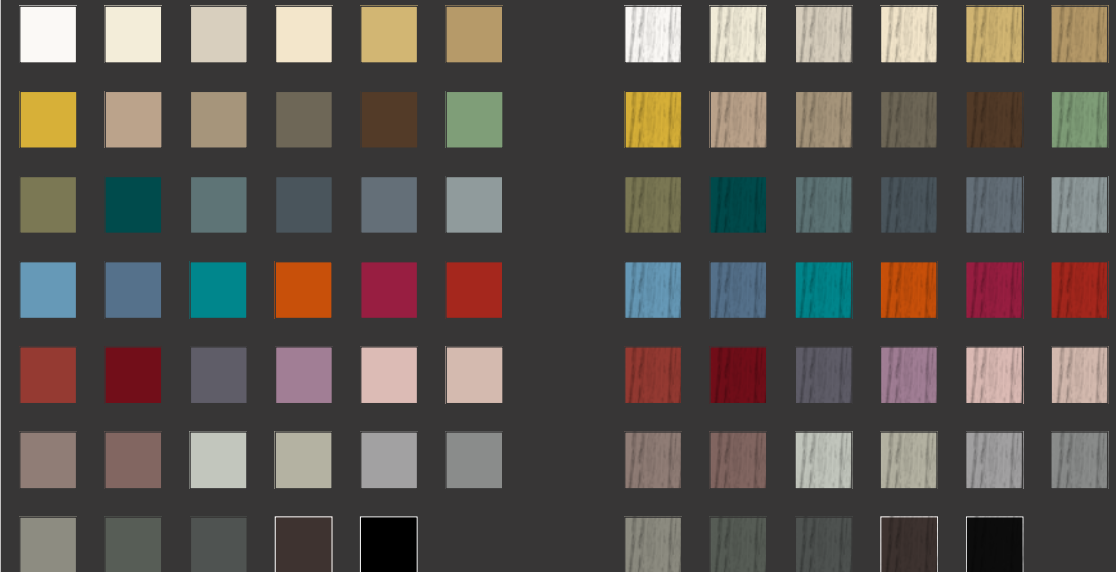


Titanio

Bianco Perlato

laccati opachi su finitura liscia e laccati opachi su finitura rovere a poro aperto

Matt lacquers (plain finish) and matt lacquers (open-pore oak finish) / Matte Lackausführungen auf glatter Oberfläche und matte Lackausführungen auf offenporiger Eichenholzoberfläche  
Laqués mats (finition lisse) et laqués mats (finition chêne à pore ouvert) / Lacados mate en acabados lisos; lacados mate en acabado roble de poro abierto







## finiture / finishes

### essenze

Wood-effect finishes / Oberflächen mit Holzeffekt  
Finitions effet bois / Acabados efecto madera



Rovere Naturale

### gres

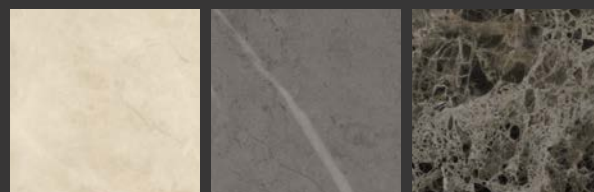
Stoneware / Steinzeug  
Grès / Gres



Calacatta venato oro  
(lucido o opaco /  
glossy or matt)

Statuario  
(lucido o opaco /  
glossy or matt)

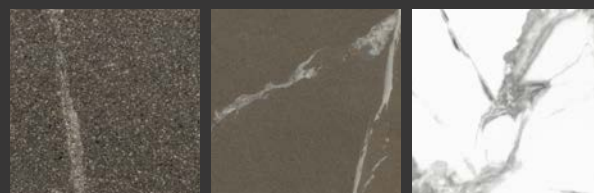
Nero Marquinia  
(lucido o opaco /  
glossy or matt)



Diamond Cream  
(lucido o opaco /  
glossy or matt)

Pietra Grey  
(lucido o opaco /  
glossy or matt)

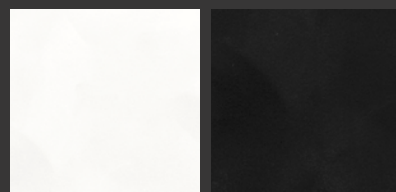
Emperador Extra  
(lucido o opaco /  
glossy or matt)



Pietra Piasentina Taupe  
(opaco o fiammato /  
matt or flamed)

Pietra Piasentina Grigio  
(opaco o fiammato /  
matt or flamed)

Invisible White (soft)

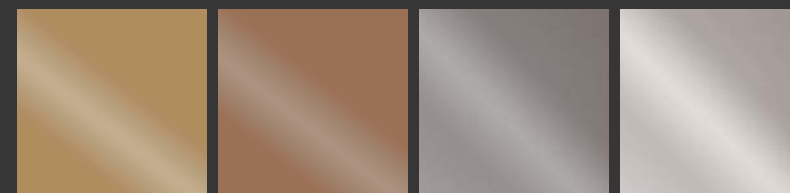


Bianco Assoluto

Nero Assoluto

### laccati metal color opachi

Metal color matt lacquers / Matte Lackausführungen metal  
Laqués Metal Color mats / Lacados mate de color metálico



Oro

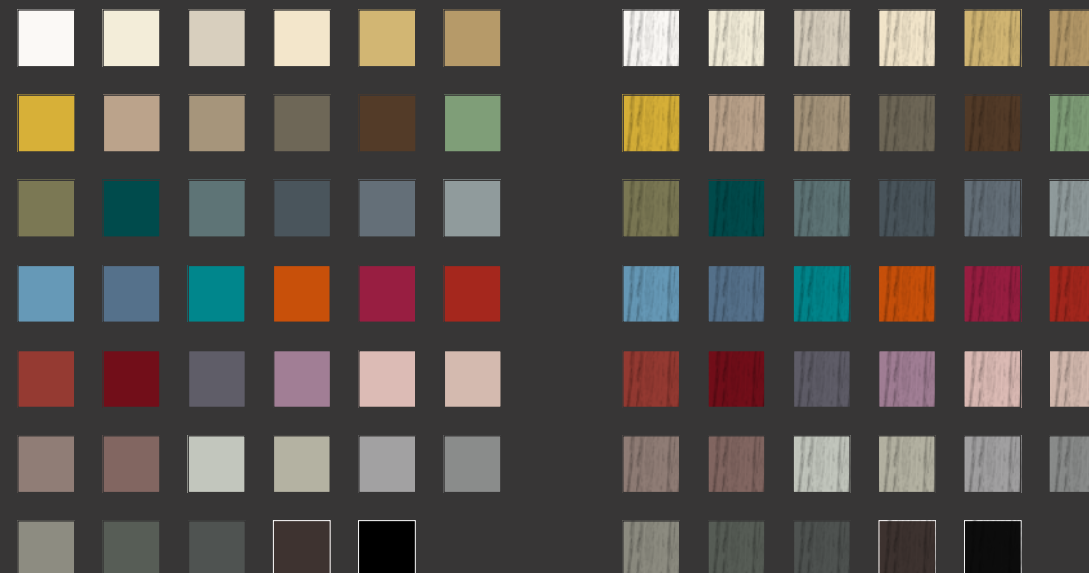
Rame

Titanio

Bianco Perlato

### laccati opachi su finitura liscia e laccati opachi su finitura rovere a poro aperto

Matt lacquers (plain finish) and matt lacquers (open-pore oak finish) / Matte Lackausführungen auf glatter Oberfläche und matte Lackausführungen auf offenerporiger Eichenholzoberfläche  
Laqués mats (finition lisse) et laqués mats (finition chêne à pore ouvert) / Lacados mate en acabados lisos; lacados mate en acabado roble de poro abierto





finiture / finishes

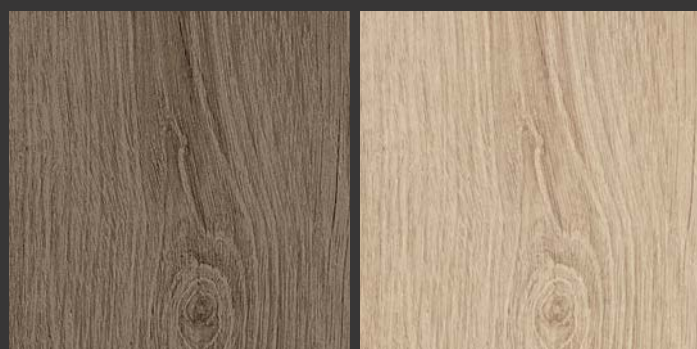
## finiture nobilitate

*Melamine finishes*  
*Melaminbeschichtungen*  
*Finitions mélaminées*  
*Acabados melaminados*



Bianco

BA991



BA992

BA993

## laccati metal color opachi

*Metal color matt lacquers*  
*Matte Lackausführungen metal*  
*Laqués Metal Color mats*  
*Lacados mate de color metálico*



Oro

Rame



Titanio

Bianco Perlato

## laccati opachi e lucidi

*Matt and glossy lacquers*  
*Glänzende Lackausführungen*  
*Laqués mats et brillants*  
*Lacados mate y brillantes*





finiture / finishes

## essenze polimeriche

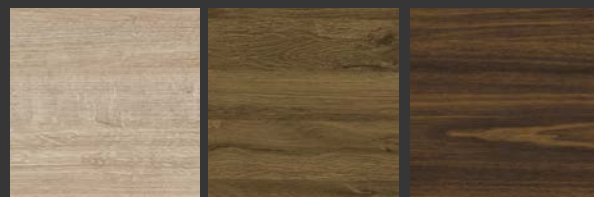
*Wood-effect polymer finishes*  
*Polymere Oberflächen mit Holzeffekt*  
*Finitions polymères effet bois*  
*Acabados poliméricos efecto madera*



LB001

LB002

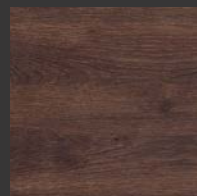
LB003



LB004

LB005

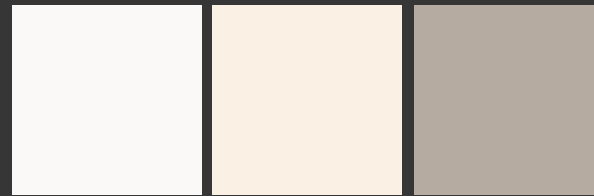
LB006



LB007

## colori polimerici

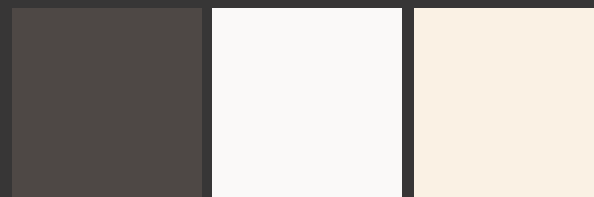
*Coloured polymer finishes (matt and glossy)*  
*Farbige Polymeroberflächen (matt und glänzend)*  
*Finitions polymères colorées brillantes et mates*  
*Colores poliméricos brillantes y mate*



CB001 opaco

CB002 opaco

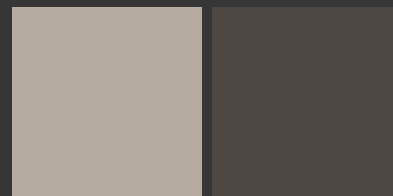
CB003 opaco



CB004 opaco

CB005 lucido

CB006 lucido

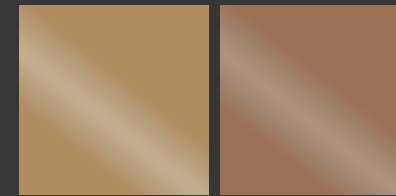


CB007 lucido

CB008 lucido

## laccati metal color opachi

*Metal color matt lacquers*  
*Matte Lackausführungen metal*  
*Laqués Metal Color mats*  
*Lacados mate de color metálico*



Oro

Rame



Titanio

Bianco Perlato

## laccati opachi e lucidi

*Matt and glossy lacquers*  
*Glänzende Lackausführungen*  
*Laqués mats et brillants*  
*Lacados mate y brillantes*





finiture / finishes

## essenze polimeriche

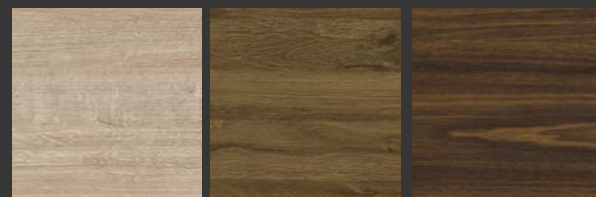
*Wood-effect polymer finishes*  
*Polymere Oberflächen mit Holzeffekt*  
*Finitions polymères effet bois*  
*Acabados poliméricos efecto madera*



LB001

LB002

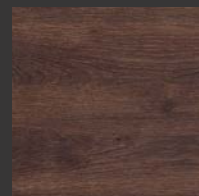
LB003



LB004

LB005

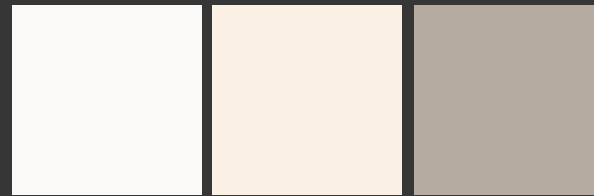
LB006



LB007

## colori polimerici lucidi e opachi

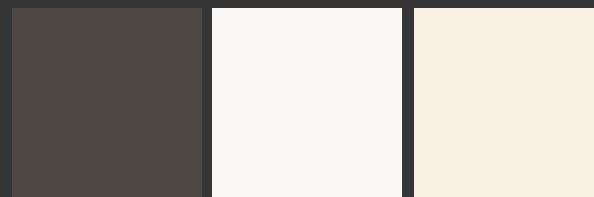
*Coloured polymer finishes (matt and glossy)*  
*Farbige Polymeroberflächen (matt und glänzend)*  
*Finitions polymères colorées brillantes et mates*  
*Colores poliméricos brillantes y mate*



CB001 opaco

CB002 opaco

CB003 opaco



CB004 opaco

CB005 lucido

CB006 lucido

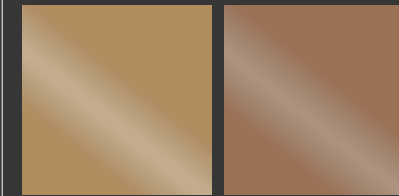


CB007 lucido

CB008 lucido

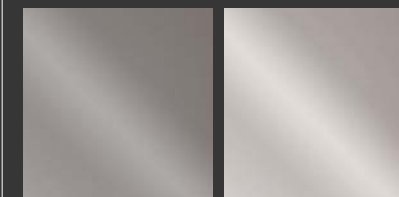
## laccati metal color opachi

*Metal color matt lacquers*  
*Matte Lackausführungen metal*  
*Laqués Metal Color mats*  
*Lacados mate de color metálico*



Oro

Rame



Titanio

Bianco Perlato

## laccati opachi e lucidi

*Matt and glossy lacquers*  
*Glänzende Lackausführungen*  
*Laqués mats et brillants*  
*Lacados mate y brillantes*





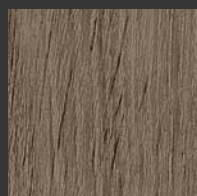
finiture / finishes

## essenze polimeriche

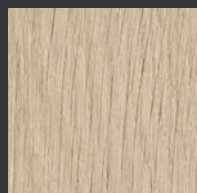
*Wood-effect polymer finishes  
Polymere Oberflächen mit Holzeffekt  
Finitions polymères effet bois  
Acabados poliméricos efecto madera*



BA991



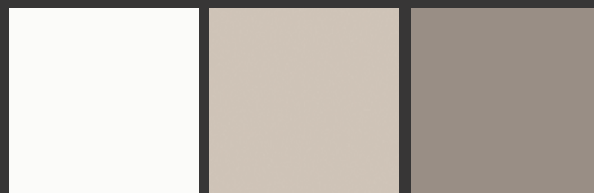
BA992



BA993

## colori lacklaminat lucidi e opachi

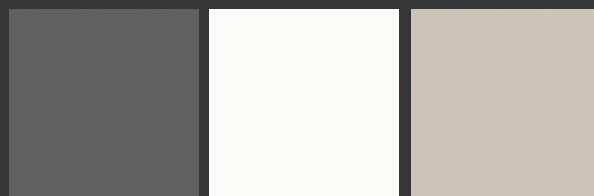
*Glossy and matt coloured Lacklaminat  
Glänzende und matte Lacklaminat-Farben  
Finitions Lacklaminat colorées brillantes et mates  
Colores brillantes y mate Lacklaminat*



BA001 lucido

BA002 lucido

BA003 lucido



BA004 lucido

BA005 opaco

BA006 opaco



BA007 opaco

BA008 opaco

## laccati metal color opachi

*Metal color matt lacquers  
Matte Lackausführungen metal  
Laqués Metal Color mats  
Lacados mate de color metálico*



Oro

Rame

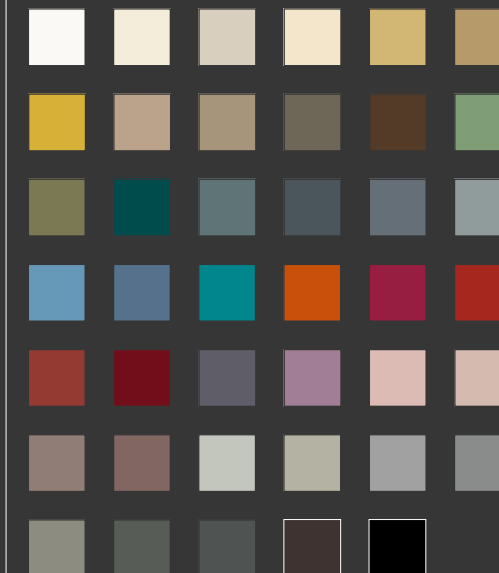


Titanio

Bianco Perlato

## laccati opachi e lucidi

*Matt and glossy lacquers  
Glänzende Lackausführungen  
Laqués mats et brillants  
Lacados mate y brillantes*

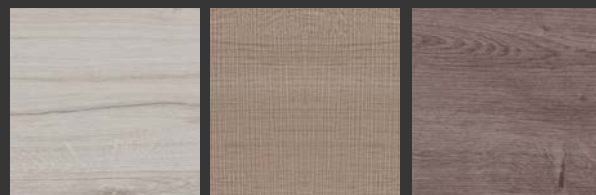




finiture / finishes

## essenze polimeriche

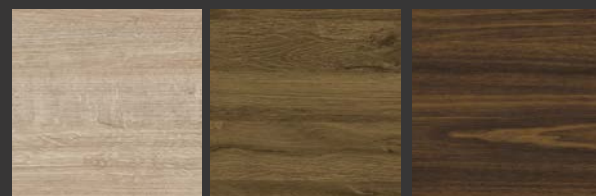
*Wood-effect polymer finishes*  
*Polymere Oberflächen mit Holzeffekt*  
*Finitions polymères effet bois*  
*Acabados poliméricos efecto madera*



LB001

LB002

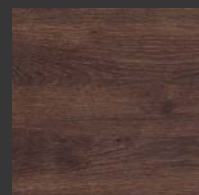
LB003



LB004

LB005

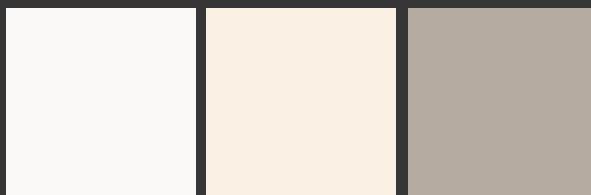
LB006



LB007

## colori polimerici lucidi e opachi

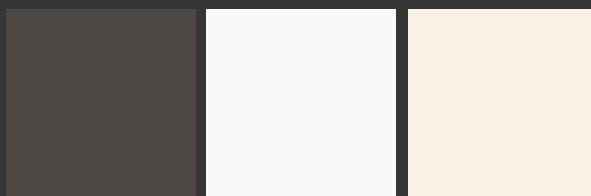
*Coloured polymer finishes (matt and glossy)*  
*Farbige Polymeroberflächen (matt und glänzend)*  
*Finitions polymères colorées brillantes et mates*  
*Colores poliméricos brillantes y mate*



CB001 opaco

CB002 opaco

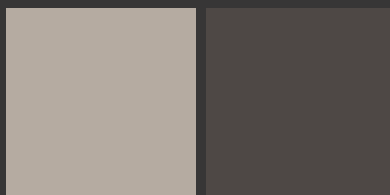
CB003 opaco



CB004 opaco

CB005 lucido

CB006 lucido



CB007 lucido

CB008 lucido

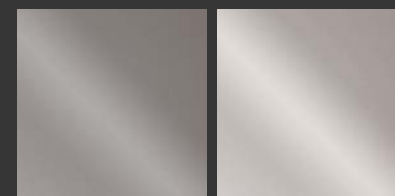
## laccati metal color opachi

*Metal color matt lacquers*  
*Matte Lackausführungen metal*  
*Laqués Metal Color mats*  
*Lacados mate de color metálico*



Oro

Rame

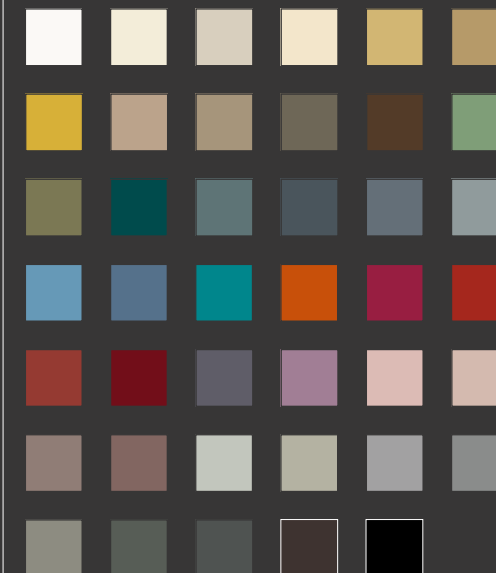


Titanio

Bianco Perlato

## laccati opachi e lucidi

*Matt and glossy lacquers*  
*Glänzende Lackausführungen*  
*Laqués mats et brillants*  
*Lacados mate y brillantes*







finiture / finishes

## finiture nobilitate

*Melamine finishes*  
*Melaminbeschichtungen*  
*Finitions mélaminées*  
*Acabados melaminados*



Bianco

BA991



BA992

BA993

## laccati metal color opachi

*Metal color matt lacquers*  
*Matte Lackausführungen metal*  
*Laqués Metal Color mats*  
*Lacados mate de color metálico*



Oro

Rame



Titanio

Bianco Perlato

## laccati opachi e lucidi

*Matt and glossy lacquers*  
*Glänzende Lackausführungen*  
*Laqués mats et brillants*  
*Lacados mate y brillantes*

