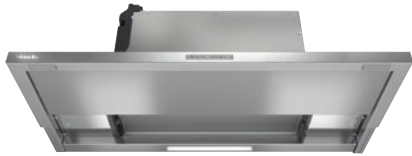


DAS 2920
Slimline cooker hood
with EasySwitch controls for convenient operation



- Classic design – stainless steel panel, 90 cm wide
- LED strip for uniform lighting
- Efficient filtration- 10-ply stainless-steel grease filter
- Safe and easy to clean – Miele CleanCover
- Recirculation mode – Active AirClean or Longlife AirClean filter

A

EAN: 4002516495888 / Material number: 11878180 / Old Material Number: 28S2920SGB

| | |
|---|-----------------|
| Construction type | |
| Slimline cooker hood | • |
| Operating modes | |
| Type of air guide | Convertible |
| Recirculation conversion kit (order separately) | DUU 151 |
| Design | |
| Colour | Stainless steel |
| User convenience | |
| Electronic controls | • |
| Touch-on-glass controls | • |
| Efficiency and sustainability | |
| Energy efficiency class (A+++ to D) | A |
| Annual energy consumption in kWh/year | 42.0 |
| Fluid dynamic efficiency class | A |
| Lighting efficiency class | A |
| Grease filtering efficiency class | A |
| Cleaning convenience | |
| Easy-to-clean canopy interior – CleanCover | • |
| Filter system | |
| Number of dishwasher-safe stainless steel grease filters (10-ply) | 1 |
| Lighting | |
| LED | • |
| Number x W | 1 x 3,2 W |
| Light intensity in lx | 275 lx |
| Colour temperature in K | 3500 Kelvin |
| Blower | |
| Dual-action blower | • |
| AC motor | • |
| Extraction | |
| Air throughput in Level 1 (m ³ /h) according to EN 61591 | 195 |
| Air throughput in Level 2 (m ³ /h) according to EN 61591 | 295 |
| Air throughput in Intensive level (m ³ /h) according to EN 61591 | 555 |
| Air throughput in Level 3 (m ³ /h) according to EN 61591 | 410 |
| Sound power in Level 1 (dB(A) re 1 pW) according to EN 60704-3 | 47.0 |
| Sound power in Level 2 (dB(A) re 1 pW) according to EN 60704-3 | 54.0 |
| Sound power in Level 3 (dB(A) re 1 pW) according to EN 60704-3 | 61.0 |
| Sound power in Booster level (dB(A) re 1 pW) acc. to EN 60704-3 | 69.0 |
| Sound pressure in Level 1 (dB(A) re 20 µPa) according to EN 60704-2-13 | 33.0 |
| Sound pressure in Level 2 (dB(A) re 20 µPa) according to EN 60704-2-13 | 40.0 |
| Sound pressure in Level 3 (dB(A) re 20 µPa) according to EN 60704-2-13 | 47.0 |
| Sound pressure in Booster level (dB(A) re 20 µPa) acc. to EN 60704-2-13 | 55.0 |

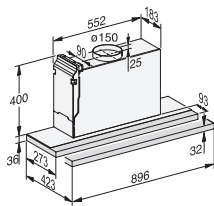
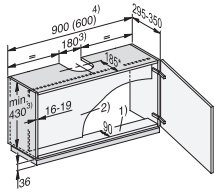
DAS 2920
Slimline cooker hood
with EasySwitch controls for convenient operation



EAN: 4002516495888 / Material number: 11878180 / Old Material Number: 28S2920SGB

| Recirculation | |
|--|------|
| Air throughput in Level 1 (m ³ /h) according to EN 61591 | 190 |
| Air throughput in Level 2 (m ³ /h) according to EN 61591 | 290 |
| Air throughput in Level 3 (m ³ /h) according to EN 61591 | 415 |
| Air throughput in Booster level (m ³ /h) according to EN 61591 | 550 |
| Sound power in Level 1 (dB(A) re 1 pW) according to EN 60704-3 | 52.0 |
| Sound power in Level 2 (dB(A) re 1 pW) according to EN 60704-3 | 60.0 |
| Sound power in Level 3 (dB(A) re 1 pW) according to EN 60704-3 | 68.0 |
| Sound power in Booster level (dB(A) re 1 pW) acc. to EN 60704-3 | 75.0 |
| Sound pressure in Level 1 (dB(A) re 20 µPa) according to EN 60704-2-13 | 38.0 |
| Sound pressure in Level 2 (dB(A) re 20 µPa) according to EN 60704-2-13 | 46.0 |
| Sound pressure in Level 3 (dB(A) re 20 µPa) according to EN 60704-2-13 | 54.0 |
| Sound power in Booster level (dB(A) re 20 µPa) acc. to EN 60704-2-13 | 61.0 |
| Safety | |
| Safety switch-off | • |
| Technical data | |
| Canopy width in mm | 896 |
| Canopy height in mm | 36 |
| Canopy depth in mm | 273 |
| Net weight in kg | 14.0 |
| Length of supply lead in m | 1.5 |
| Standard plug fitted | • |
| Minimum height above electric hobs in mm | 450 |
| Minimum safety distance above gas hobs (max. 12.6 kW total power, burner ≤ 4.5 kW) in mm | 650 |
| Total rated load in kW | 0.20 |
| Voltage in V | 230 |
| Fuse rating in A | 10 |
| Frequency in Hz | 50 |
| Number of phases | 1 |
| Installation notes | |
| Extraction ducting connection at top | • |
| Diameter of exhaust duct in mm | 150 |
| Accessories supplied | |
| Non-return flap | • |
| Optional accessories | |
| Active charcoal filter | Nein |

DAS 2920
Slimline cooker hood
with EasySwitch controls for convenient operation



DAS2920, DAS2920 EXTA, DAS4920, Installation drawings

1) The front section of the wall unit must be fitted with a base panel to secure the cooker hood. If the appliance is fitted further back, e.g. to accommodate a front panel, then the shelf depth should be deeper accordingly. . 2) If a partition wall is to be provided in the unit, it must be removable. . 3) Extraction, recirculation with conversion kit DUU 150. . * In this installation situation, the deflector plate is flush with the front edge of the housing unit carcass. . If you wish to position the cooker hood further forward or further back (e.g. because it has a front panel), dimensions have to be adapted accordingly. . Extraction: the height of the wall unit and the cut-out dimensions must take into account any accessories fitted, e.g. silencer, recirculation hood conversion kit).