

STYLO WOOD

SCRITTOIO | WRITING DESK

Design T. Colzani

2008



STYLO WOOD

Design T. Colzani

SCRITTOIO | WRITING DESK

2008

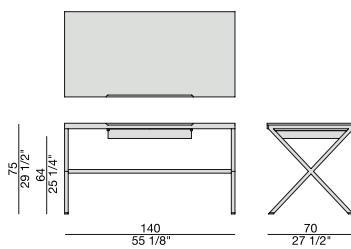
Scrittoio con struttura in metallo, cassetto e piano in massello di noce canaletta.

Writing-desk with metal frame, drawer and top in solid canaletta walnut.

Schreibtisch mit verchromter Struktur, Schublade und Platte aus massivem Nussbaum Canaletta.

Bureau avec structure en métal chromé, plateau et tiroir en noyer canaletta massif.

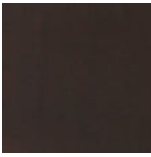
Escritorio con estructura en metal, cajón y tapa en nogal canaletta macizo.



Essenze | Wood



NOCE CANALETTA
Canaletta Walnut

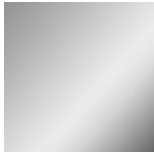


NOCE CANALETTA
Canaletta Walnut
tinto/stained moka



NOCE CANALETTA
Canaletta Walnut
tinto/stained wengé

Metallo | Metal



CROMATO
Chrome plated



OTTONE BRONZATO
SPAZZOLATO
Brushed bronzed brass