



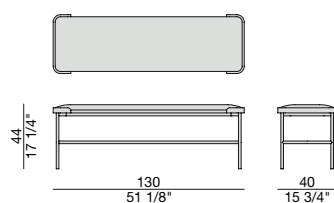
Panca con struttura in metallo finitura Bronzoro e rivestimento nei tessuti della collezione. Cornice della seduta in massello di frassino.

Bench with metal frame in Bronzoro finish. Cover available in the fabrics of the collection. Seat with solid ash frame.

Sitzbank mit Gestell aus Metall und Bronzoro Finish. Bezug in den Stoffen der Kollektion.

Banquette avec structure en métal, finition Bronzoro. Revêtement dans les tissus de la collection et cadre d'assise en frêne massif.

Banqueta con estructura de metal en acabado Bronzoro y revestimiento en las telas de la colección. Marco del asiento en fresno macizo.



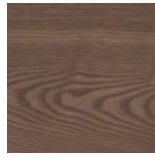
## Essenze | Wood



FRASSINO NATURALE  
Natural Ash



FRASSINO  
Ash  
*tinto/stained moka*



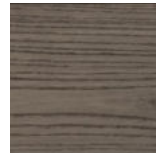
FRASSINO  
Ash  
*tinto/stained  
canaletta walnut*



FRASSINO  
Ash  
*tinto/stained wengé*



FRASSINO  
Ash  
*tinto/stained canapa*



FRASSINO  
Ash  
*tinto/stained caffè*

## Metallo | Metal



BRONZORO

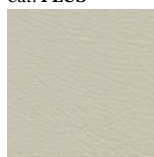
## Pelle | Leather

### Cat. LUX



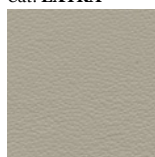
Nabuk

### Cat. PLUS



Pelle PLUS

### Cat. EXTRA



Pelle EXTRA

### Cat. PELLE



Pelle

## Rivestimento | Cover

### Cat. A



Hallindal 65

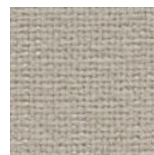


Hound

### Cat. B

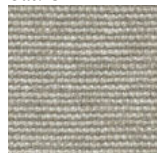


Rabat



Milord

### Cat. C



Armam



Fashion



Flax



Ikat



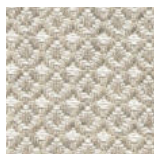
Loom



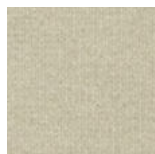
Madras



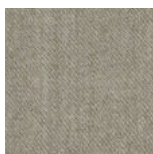
Moran



Thalys



Velvet

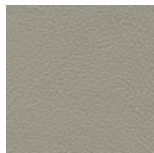


Wool

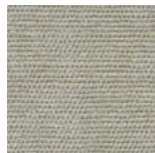
### Cat. D



Astra



Ecopelle



Range



Tress

### Cat. E



Cotone



Dorian



In Bianco/Calico

### Cat. COM

Disponibile con tessuto fornito dal cliente.

Available with fabric supplied by the customer.

Verfügbar mit Kundenstoff.

Disponible avec tissu du client.

Disponible con tela suministrada por el cliente.