

## NIGHT STANDS

### STANDARD FEATURES

- Hard wood frame covered in leather.
- Smoked glass or stainless steel top.
- Stitching CUC 507

### CARATTERISTICHE STANDARD

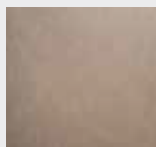
- Struttura in legno rivestita in pelle.
- Ripiano in vetro fumè o in acciaio.
- Cucitura CUC 507

### NOTES

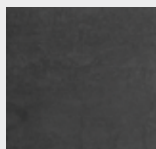
- Dimensions: the first figure shows sizes in centimeters, the second in inches.
- Available only standard stitching.
- Available with up-charge for ceramic top.

### NOTE

- Dimensioni: la prima cifra indica i centimetri, la seconda cifra indica i pollici.
- Disponibile solo con cucitura standard.
- Disponibile con supplemento ripiano in ceramica.



Ceramic top up-charge  
Supplemento ripiano in ceramica:  
TERRA COLOR  
sp. 8 mm



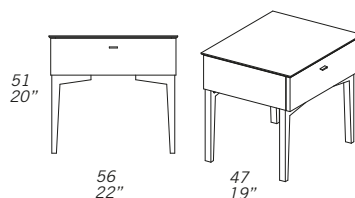
Ceramic top up-charge  
Supplemento ripiano in ceramica:  
ANTRACITE COLOR  
sp. 8 mm



Ceramic top up-charge  
Supplemento ripiano in ceramica:  
OSSIDO BRUNO COLOR  
sp. 12 mm

## K07

K007-A Wood Legs



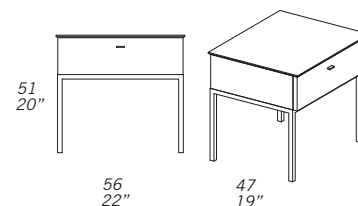
noce canaletto



frassino

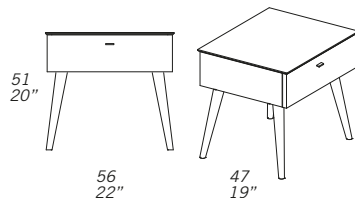


K007-B Metal Base



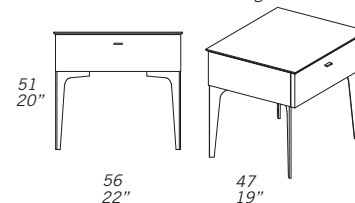
dark chrome, chrome or painted base.

K007-C Cone Legs



dark chrome, chrome or painted legs.

K007-D Metal Legs



dark chrome, chrome or painted legs.