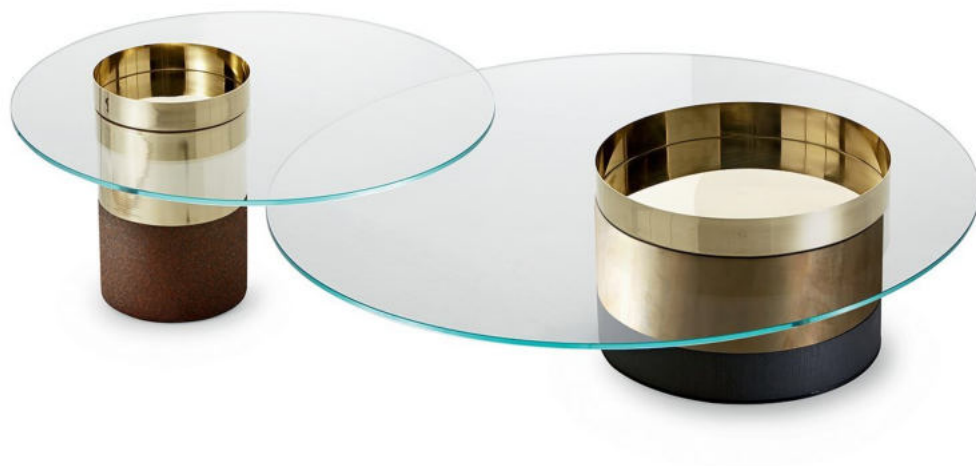


---

# Haumea

---

*Massimo Castagna*  
2015



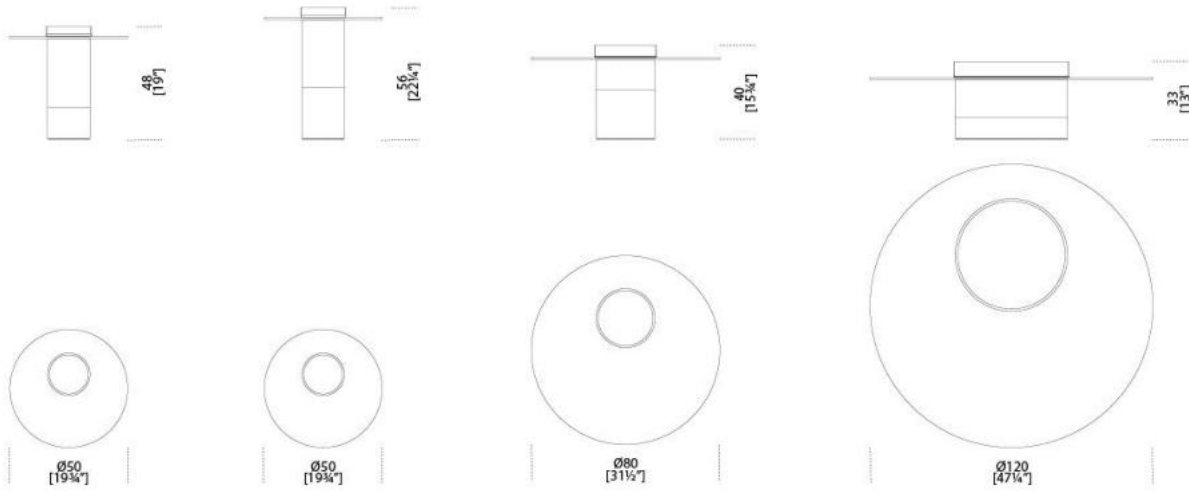
# Haumea

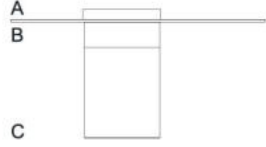

Massimo Castagna , 2015

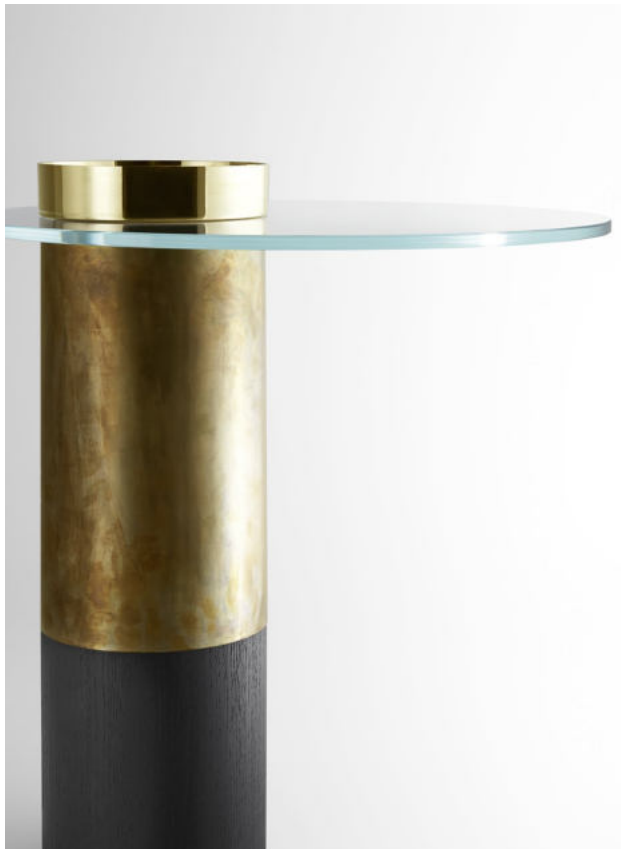
Tavolino con piano in cristallo extralight temperato 10mm. Base in legno laccato nero poro aperto o ruggine. Parti metalliche in ottone lucido, brunito a mano, ramato o cromo nero.

Coffee table with 10mm extralight tempered glass top. Black open pore or rust lacquered wooden base. Bright brass, hand burnished brass, coppered brass or black chromed metal parts.

Dimensioni / Sizes  
Cm (Ø x H)  
XS 50 x 48  
S 50 x 56  
M 80 x 40  
L 120 x 33



	A	B	C
	Comb. 1 Ottone lucido Bright brass 	Comb. 1 Ottone brunito Burnished brass 	Comb. 1 Nero poro aperto Black open pore 
	Comb. 2 Ottone lucido Bright brass 	Comb. 2 Ottone lucido Bright brass 	Comb. 2 Ruggine Rust 
	Comb. 3 Ottone cromato nero Black chromed brass 	Comb. 3 Ottone cromato nero Black chromed brass 	Comb. 3 Nero poro aperto Black open pore 
	Comb. 4 Ottone cromato nero Black chromed brass 	Comb. 4 Ottone ramato Coppered brass 	Comb. 4 Ruggine Rust 
	Comb. 5 Ottone cromato nero Black chromed brass 	Comb. 5 Ottone brunito Burnished brass 	Comb. 5 Ruggine Rust 
	Comb. 6 Ottone cromato nero Black chromed brass 	Comb. 6 Ottone brunito Burnished brass 	Comb. 6 Nero poro aperto Black open pore 



### *Metallo / Metal*



*Cromo nero*  
*Black chrome*



*Ottone lucido*  
*Bright brass*



*Ottone brunito  
a mano*  
*Hand  
burnished  
brass*



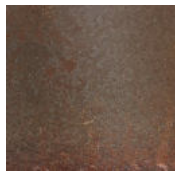
*Ottone ramato*  
*Coppered brass*

---

### *Legno / Wood*



*Nero poro  
aperto (Layer)*  
*Black open pore  
(Layer)*



*Ruggine*  
*Rust*

---

### *Cristallo / Glass*



*Extralight*  
*Extralight*

---