

---

# Eris

---

*Massimo Castagna*  
2017



*Lampada a sospensione a LED  
non dimmerabile con struttura  
verniciata nero bronzato e fasce  
in ottone lucido, satinato,  
brunito a mano e cromato nero.*

*Hanging lamp with LED light  
(not dimmable) with black  
bronzed painted structure and  
bright, satin, hand-burnished  
and black chromed brass parts.*

*Dimensioni / Sizes*

*Cm (Ø x H)*

*35 x 180*

*35 x 210*

*35 x 250*

*35 x 280*

*35 x 320*





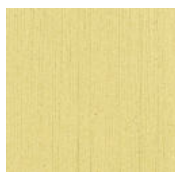


*Metallo / Metal*

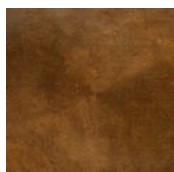
*Cromo nero*  
*Black chrome*



*Ottone lucido*  
*Bright brass*



*Ottone satinato*  
*Satin brass*



*Ottone brunito*  
*a mano*  
*Hand*  
*burnished*  
*brass*



*Nero bronzato*  
*Bronzed black*

---