

# TREND FABRICS

## MONO

### Betty (upholstery)



BE  
beige



MA  
brown



GR  
grey



OT  
teal



AR  
orange



PR  
plum

**Composition** 80% CO, 12% PC, 8% AF

**Martindale** 28.000

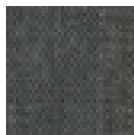


## MELANGE

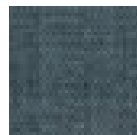
### Betty (cushions)



C1  
beige



C2  
grey



C3  
teal



C4  
orange



C5  
plum

**Composition** 39% VI, 24% PC, 19% CO, 13% PL, 5% LI

**Martindale** 30.000



## JACQUARD

### Betty (cushions)



D1  
beige



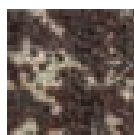
D2  
grey



D3  
teal



D4  
orange



D5  
plum

**Composition** 40% WO, 20% VI, 15% CO, 10% PL, 10% LI, 5% PC

**Martindale** 40.000





# TREND FABRICS

## SOLID

Cara



1A  
beige

2B  
green

3C  
rusty

4D  
anthracite

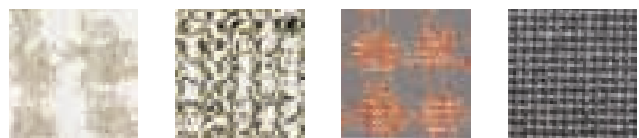
Composition 62% VI, 22% CO, 11% LI, 5% PL

Martindale 30.000



## FANCY

Cara



1E  
white-beige

2F  
green-black

3G  
rusty-beige

4H  
black-beige

1E white-beige - 3G rusty-beige

Composition 44% CO, 27% VI, 22% PL, 6% LI, 1% SE

Martindale 30.000



4H black-beige

Composition 38% VI, 30% CO, 20% PL, 12% LI

Martindale 25.000



2F green-black

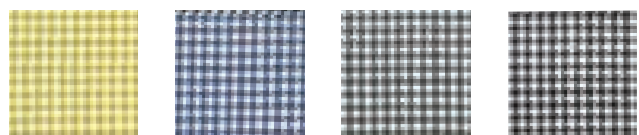
Composition 32% CO, 50% VI, 7% LI, 3% WO, 8% PC

Martindale 20.000



## PIED DE POULE

Largo/Clap



TV  
mustard

TB/NE  
blue

TG/NF  
grey

TN/NH  
black

Composition 49% LI, 38% CO, 13% VI

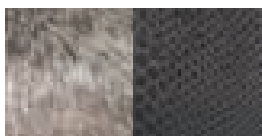
Martindale 35.000



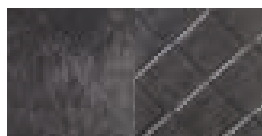
# TREND FABRICS

## KRAVITZ

### Mademoiselle Kravitz



07  
faux-fur - snake print fabric



09  
faux-fur - woven fabric



81  
raffia fabric - woven fabric

#### 07 faux-fur - snake print fabric

**Composition** 100% MA - 62% VI, 30% CO, 8% PL

#### 09 faux-fur - woven fabric

**Composition** 100% MA - 42% VI, 40% CO, 18% WO

#### 81 raffia fabric - woven fabric

**Composition** 100% PVC - 42% VI, 40% CO, 18% WO

## SANDERSON

### Clap



chelsea



peony



K  
kew

### Trix



V1  
chelsea



V3  
kew

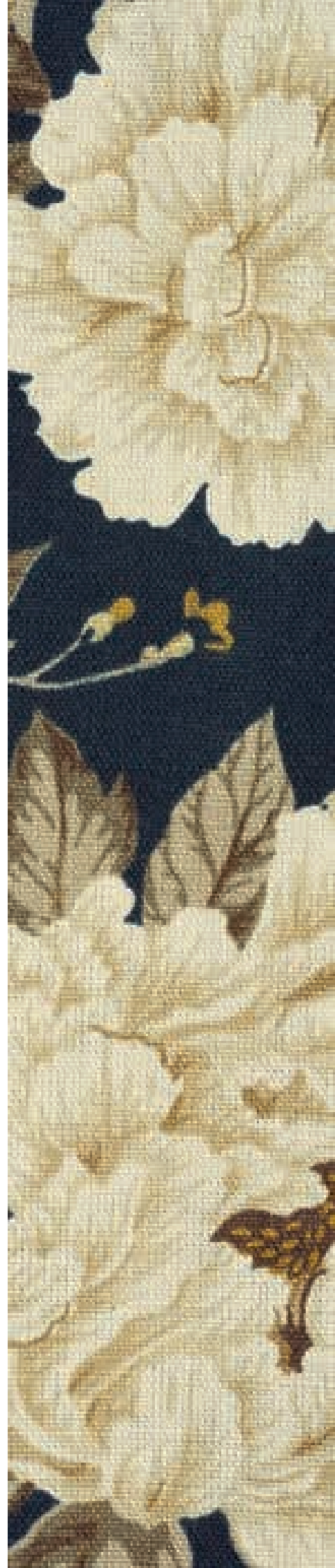
### Foliage



chelsea

**Composition** 60% LI, 30% CO, 10% NY

**Martindale** 40.000



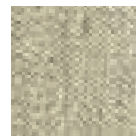
# TREND FABRICS

## MATCH

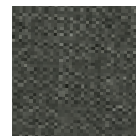
### Largo/Plastics Duo



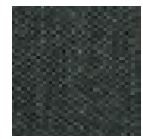
G1  
ecrù



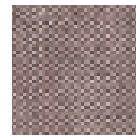
G2  
sand



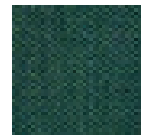
G3  
dove grey



G4  
dark grey



G5  
pink



G6  
green

Composition 48% CO, 15% VI, 7% LI, 30% PL

Martindale 52.000



## VELVET

### Largo/Foliage



50/0  
dove grey



51/1  
acid green



52/2  
pink



53/3  
teal



54/4  
cardinal red



55/5  
forest green

Composition 100% CO

Martindale 50.000



## PATTERN

### Mademoiselle



PB  
white pattern



PN  
black pattern



PP  
pied de poule



DV  
green damask

DV

Composition 100% CO/PL

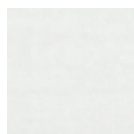
PB - PN - PP

Composition 100% CO

# OUTDOOR FABRICS

## SUNBRELLA®

### Pop Outdoor



20  
white



21  
ecru



22  
dove



27  
blue

Composition 100% PC

Martindale 15.000/25.000



## IKON

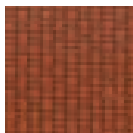
### Pop Outdoor



30  
white



31  
dove



32  
orange

Composition 84% PP, 16% PL

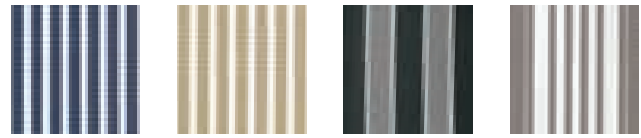
Martindale 35.000



# OUTDOOR FABRICS

## DYED FIBER

### Pop Outdoor

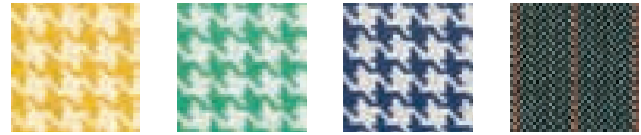


62  
blue

63  
beige

64  
dove grey/black

65  
dove grey



66  
yellow

67  
green

68  
blue

69  
blue-orange

Composition 100% PC (solution dyed acrylic)

Martindale 20.000



69 blue-orange

Martindale 30.000



## DYED FIBER

### Cara Outdoor



M  
blue-orange

L  
blue

I  
beige

N  
dove grey/black

Composition 100% PC (solution dyed acrylic)

Martindale 20.000



M blue-orange

Martindale 30.000



Colour fast  
to light 7/8



Water repellent



Oil repellent



Mould resistant



Soil resistant

# MEMPHIS FABRICS

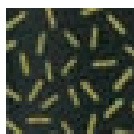
design Ettore Sottsass

## LETRASET

### Trix



A2  
fuchsia

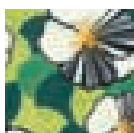


A3  
black

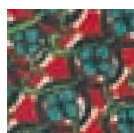
## LA DOUBLEJ FABRICS

### FLOWERS

#### Cushions



BB  
ninfea

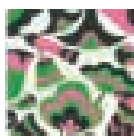


DD  
picnic



HL  
lilium

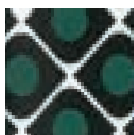
#### Trix/Cushions



HH/HT  
tulipani

### GEOMETRIC

#### Cushions



CC  
olive



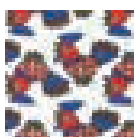
AA  
geometrico



FF  
ruote

### BIRDS

#### Cushions



GG  
galletti



EE  
uccellini

Composition 100% PES

Martindale 60.000

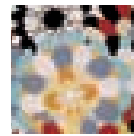




## À LA MODE FABRICS

### MISSONI

#### Pop/Mademoiselle



ZZ  
vevey  
burnt tones



QQ  
vevey red tones



LL  
cartagena B/W

Composition 100% CO

Martindale 25.000



### MOSCHINO

#### Mademoiselle



FM  
sketches



HN  
black hearts

Composition 100% CO

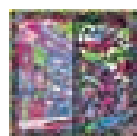
Martindale 39.000



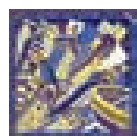
## À LA MODE FABRICS

### EMILIO PUCCI

#### Madame



PA  
Paris



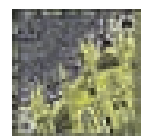
NY  
New York



SH  
Shanghai



RO  
Rome



MI  
Milan

Composition 100% PES

Martindale 60.000

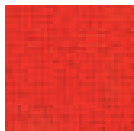




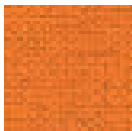
# CLASSIC FABRICS

## TREVIRA

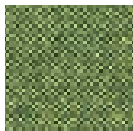
### Audrey Soft/Maui Soft



G/GG  
red



E/EE  
orange



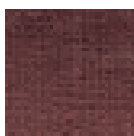
S/SS  
acid green



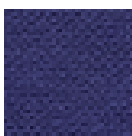
R/RR  
teal



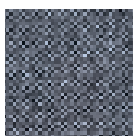
D/DD  
beige



M/MM  
brown



P/PP  
blue



C/CC  
grey



B/BB  
black

Composition 100% PL Trevira

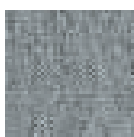
Martindale 65.000



NEW!

## NOMA new fabric made with 50% recycled polyester

### Maui Soft



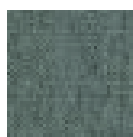
NG  
grey



NS  
mustard



NM  
ochre



NV  
green



NB  
beige



NL  
blue

Composition 50% Recycled PL, 50% PL Trevira

Martindale 60.000



Highly usable and all-round design

Classic colours with a twist

Superior fibre resistance

Good stretch properties

Prolongs furniture life

Strong environmental profile

No heavy metal

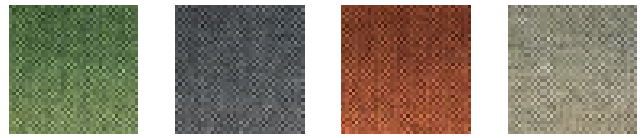
50% post-consumer recycled flame retardant polyester

STANDARD 100 by OEKO-TEX®

Meet Möbelfakta requirements

# CLASSIC FABRICS

## TREVIRA Foliage



D  
green

C  
grey

B  
orange

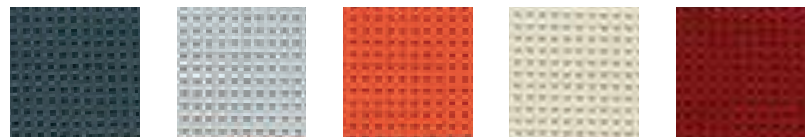
A  
beige

Composition 100% PL Trevira

Martindale 75.000



## TREVIRA Clap



2  
dark grey

3  
light grey

4  
orange

5  
beige

6  
red



7  
green

8  
black

Composition 100% PL Trevira

Martindale 50.000



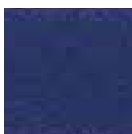
# CLASSIC FABRICS

## CLOTH

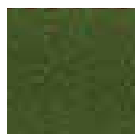
### Foliage



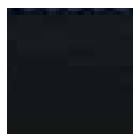
G  
orange



N  
blue



M  
green



P  
black

Composition 100% WO

Martindale 50.000



## ECO LEATHER

### Clap/Madame



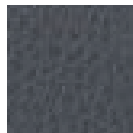
P/3  
plum



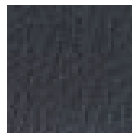
T/4  
dove grey



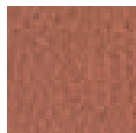
M/5  
brown



G/6  
dark grey



N/7  
black



L/8  
tobacco



V/9  
green

Composition 84% PVC, 16% CO

Martindale 75.000

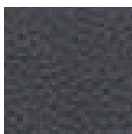


NEW!

### Betty



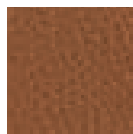
NP  
black



GP  
grey



TP  
dove grey



MP  
brown

Composition 91% PVC, 9% PL

Martindale 100.000



# CLASSIC FABRICS

## COTONE

Pop/Pop fi e tested



43  
red



40  
orange



46  
ochre



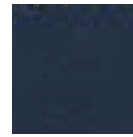
47  
green



45  
ecru



41  
white



48  
blue



44  
grey

Composition 100% CO

Martindale 30.000

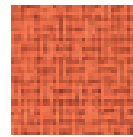


## NILO

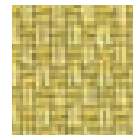
Largo/Pop Duo/Plastics Duo



72  
dove



73  
orange



74  
green



75  
grey



70  
white



71  
ecru

Composition 46% CO, 45% VI, 8% LI, 1% SE

Martindale 20.000



# CLASSIC FABRICS

## REGULAR

### Madame



1  
grey



2  
beige

Composition 65% VI, 30% PL, 5% CO

Martindale 50.000



## EMBOSSED

### Clap



2  
graphite



3  
grey



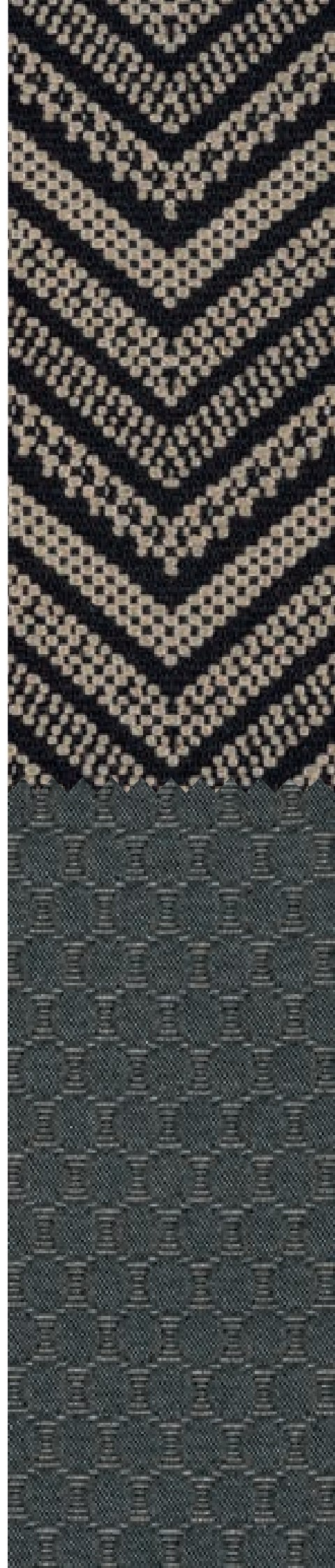
4  
orange



5  
beige

Composition 100% PL

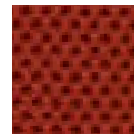
Martindale 25.000



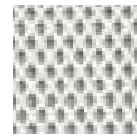
# TECHNICAL FABRICS

## NEST

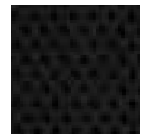
### Trix



02  
orange



03  
white



09  
slate

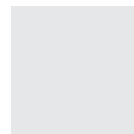
Composition 100% PL

Martindale 30.000



## PLAIN

### Plastics



PB  
white



PN  
black



PG  
grey



PV  
green



PP  
powder



PM  
ochre

Composition 55% SI, 45% PL

Martindale 130.000



Pen, marker, lipstick...  
"Write on and Erase me".  
The genuine eco-friendly faux leather.

Recyclable, eco-friendly, healthy, non toxic, free from: solvents, pvc, pu, pfc, formaldehyde, plasticizers, phthalates, heavy metals, bpa, allergens, anti-bacterial additives, biocides, flame etardant substances.

The fabric is suitable for medical use; is resistant to customary disinfecting agents which content alcoholics, aldehydes, quaternary ammonium compounds, oxygen agents, alkylamines as active ingredients.  
INSPECTED QUALITY by OETI (Institute for Ecology, Technology and Innovation)



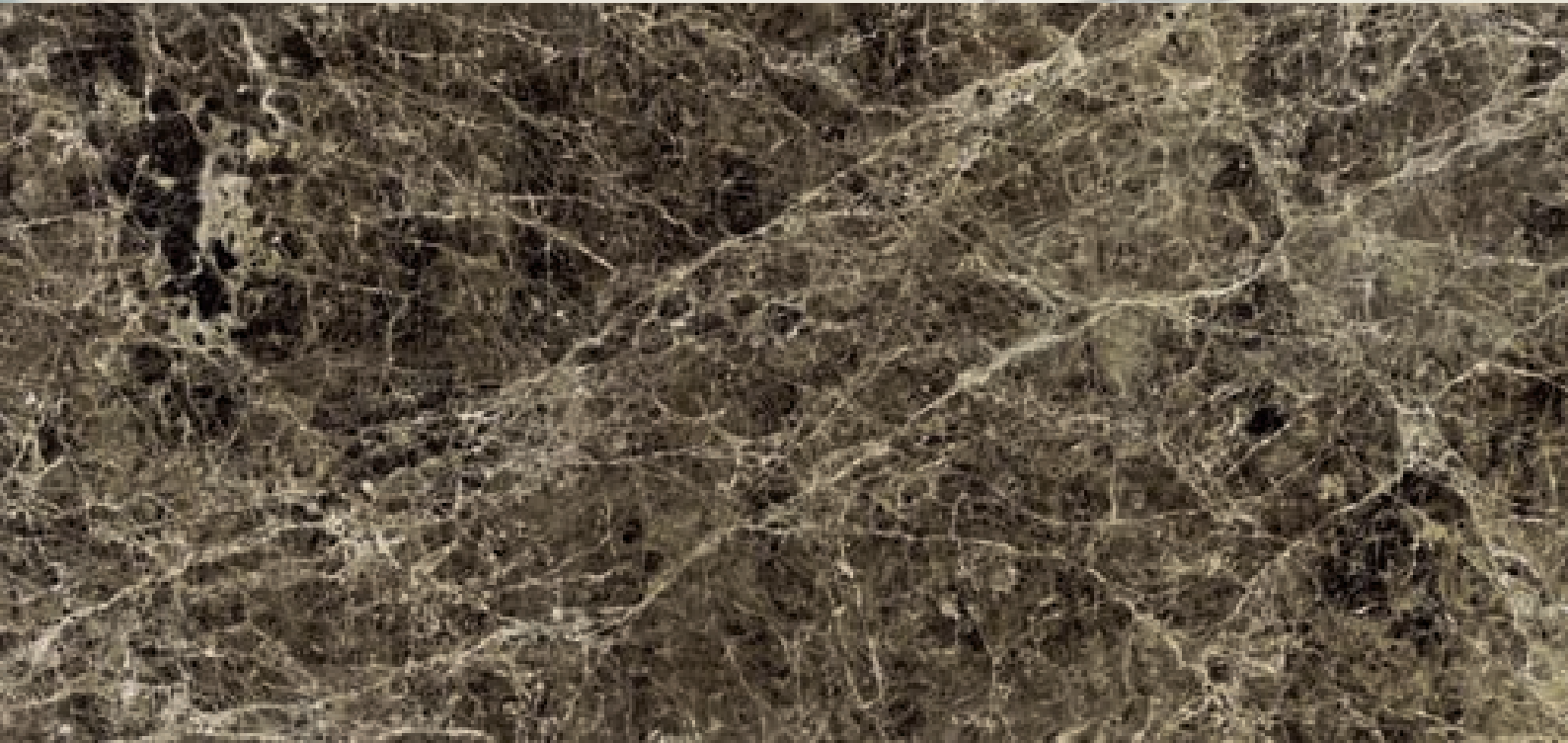
INSPECTED  
QUALITY  
by OETI



Soil resistant



Easy clean







# STONEWARE WITH **MARBLE FINISH**

## Multiplo/Glossy



MG  
Tropical Grey



MS  
Symphonie



MM  
Brown Emperador



CN  
Aged Bronze



MB  
White



MN  
Black

**Composition** 40% Clay, 40% Feldspat, 20% Sand and quartz, 15% Kaolin and carbonate

**Certifications** CE EN 14411:2012, LEED, UL Greenguard