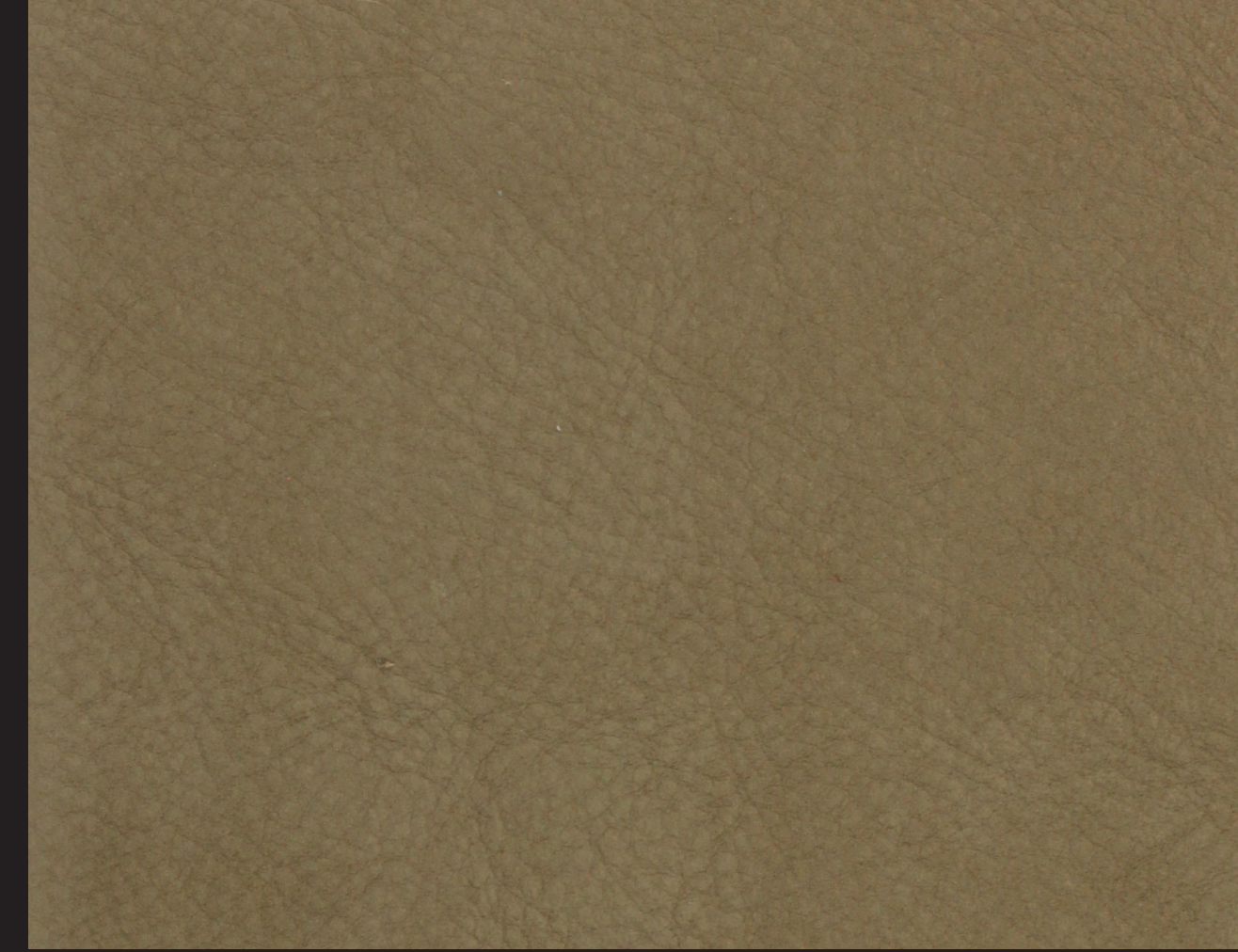


NABUK NATURAL LEATHER

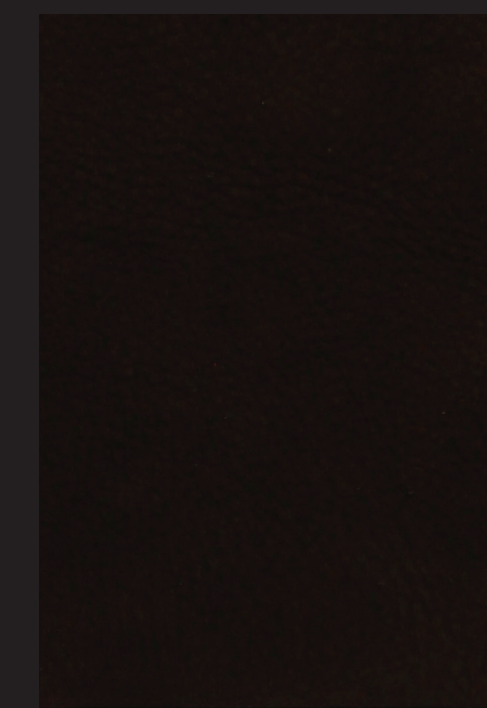


COLOUR # 18 CAPPUCCINO

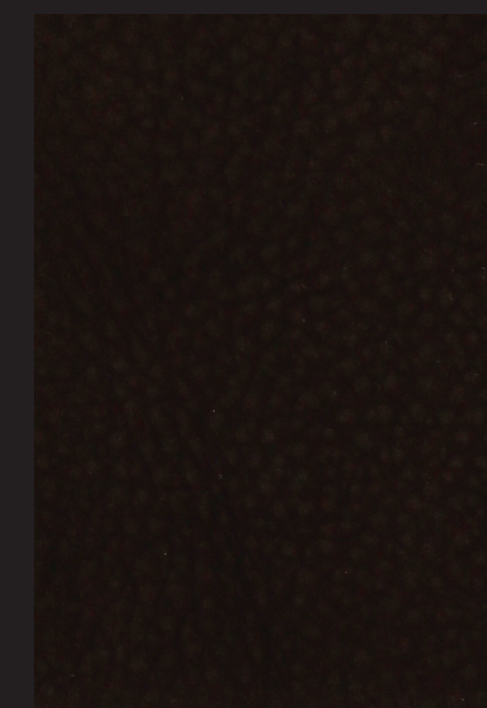
Pelli vitellone fiore nabuccato provenienza Europa, conciate con cromo, tinte in botte all'anilina, grana naturale, asciugate all'aria, rifinite con resine acriliche, fissate con poliuretani in dispersione acquosa, resistente ai liquidi a base oleosa ed acquosa.
Misura media m² 5 - Spessore mm 1,3

Nabuk full-grain European ox or heifer calf, chrometanned, aniline-dyed in drums, natural-grain, air dried, finished with acrylic resins, fixed with poliurethane in wather dispersion.
Average size: 5 m² - Thickness: 1,3 mm

Nabuk peaux de veau fleur en provenance Europe, tannées au chrome, teintées en tonneau à l'aniline, grain naturel, séchées à l'air, finies avec de résines acryliques, fixées par polyuréthane en dispersion aqueuse.
Dimension moyenne: 5 m² - Épaisseur: 1,3 mm



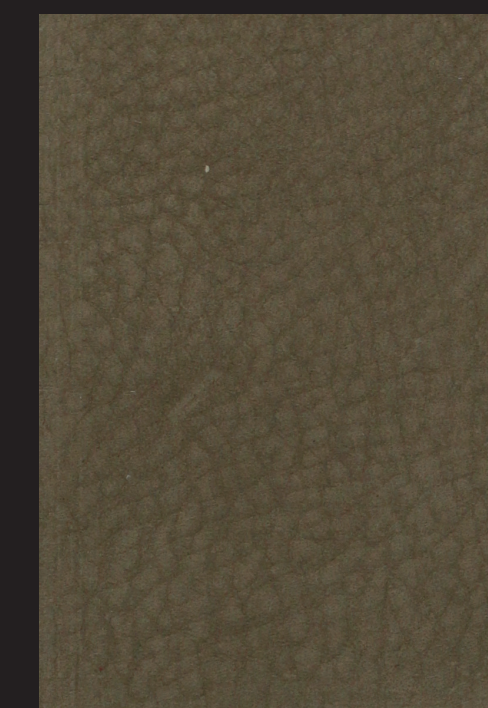
COLOUR # 1 CIOCCO



COLOUR # 2 DARK BROWN



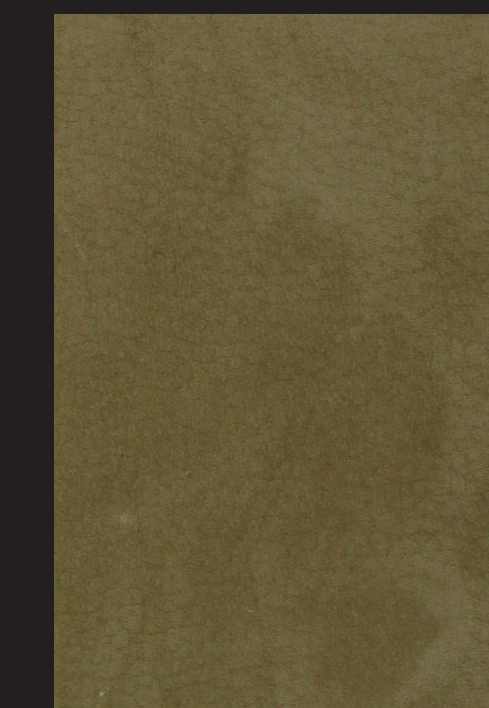
COLOUR # 16 LIGHT BROWN



COLOUR # 17 ANTYLOP



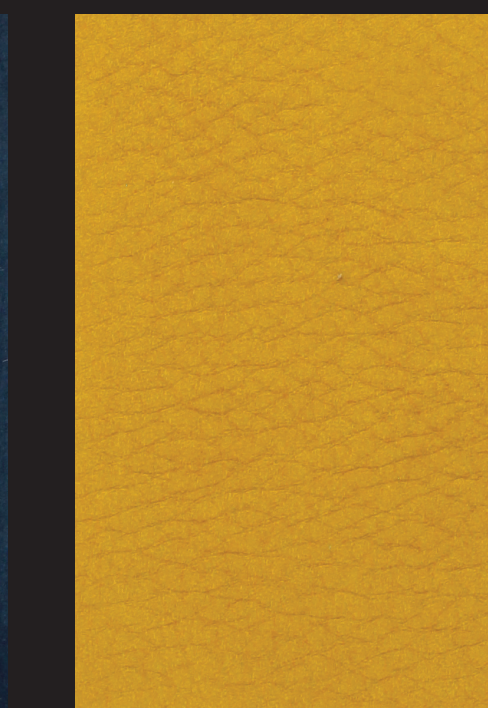
COLOUR # 15 AVANA



COLOUR # 7 LIGHT GREEN



COLOUR # 18 BLUE



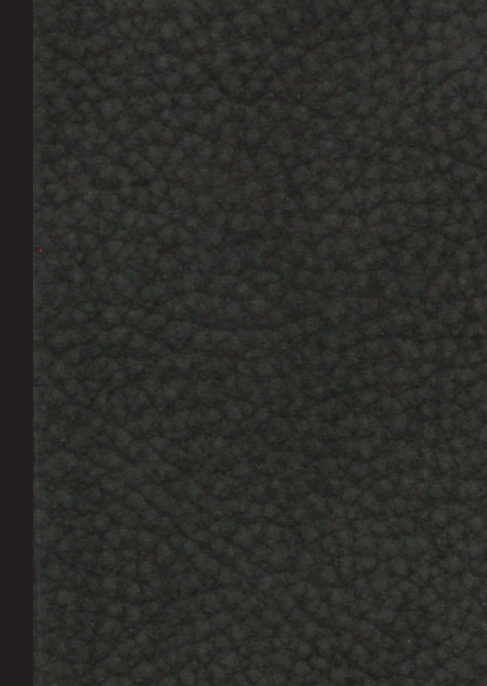
COLOUR # 22 YELLOW



COLOUR # 21 RED



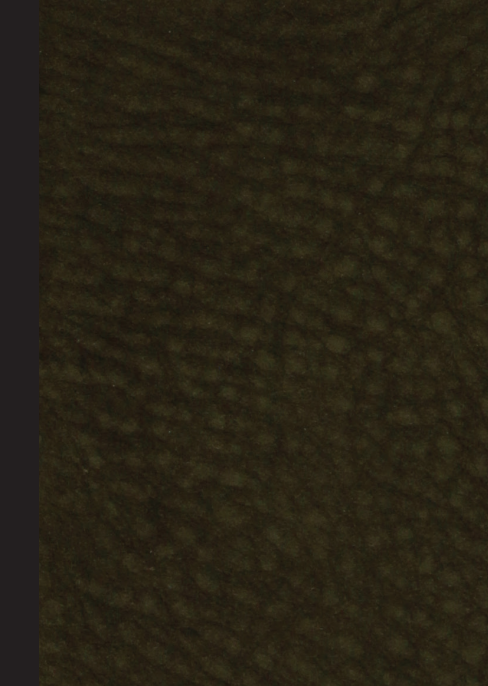
COLOUR # 19 AMBER



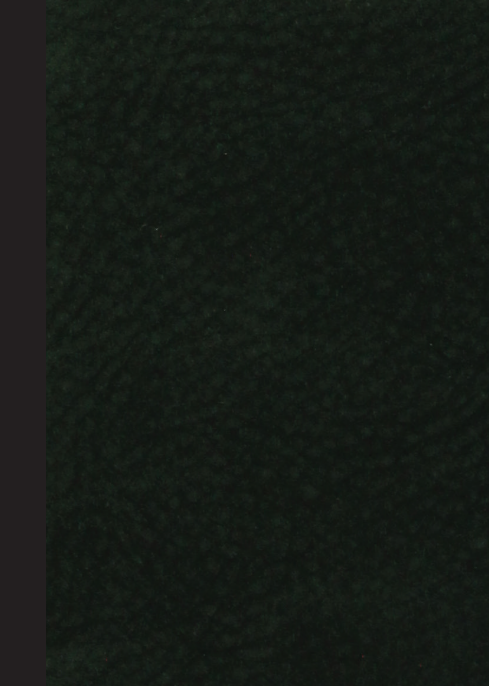
COLOUR # 6 STONE



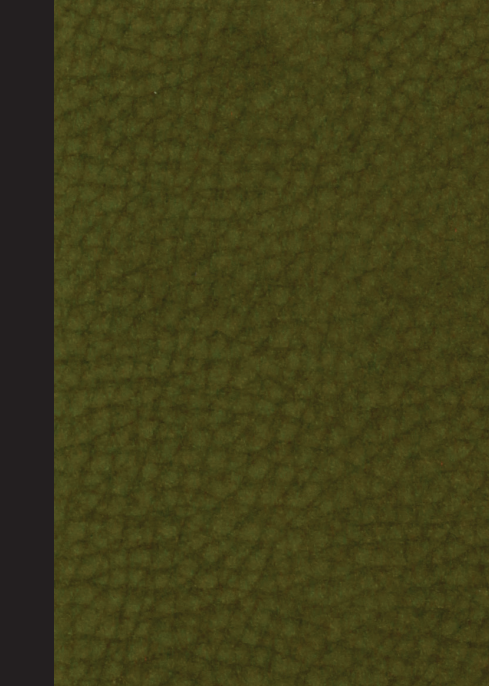
COLOUR # 14 SMOKE



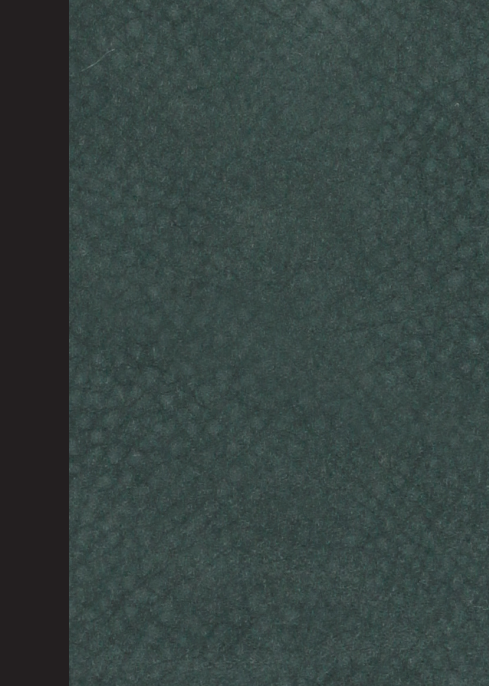
COLOUR # 8 MEDIUM GREEN



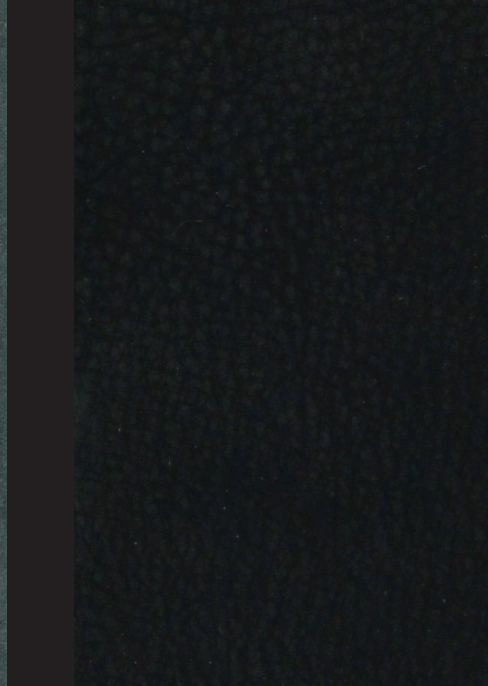
COLOUR # 24 DARK GREEN



COLOUR # 20 APPLE GREEN



COLOUR # 12 GREY



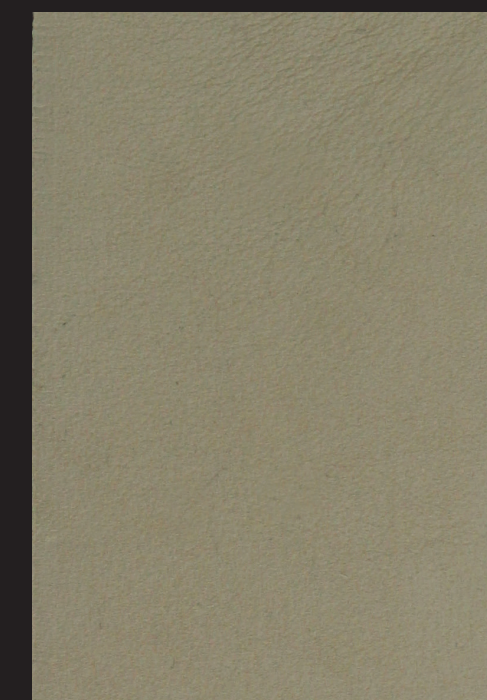
COLOUR # 13 BLACK



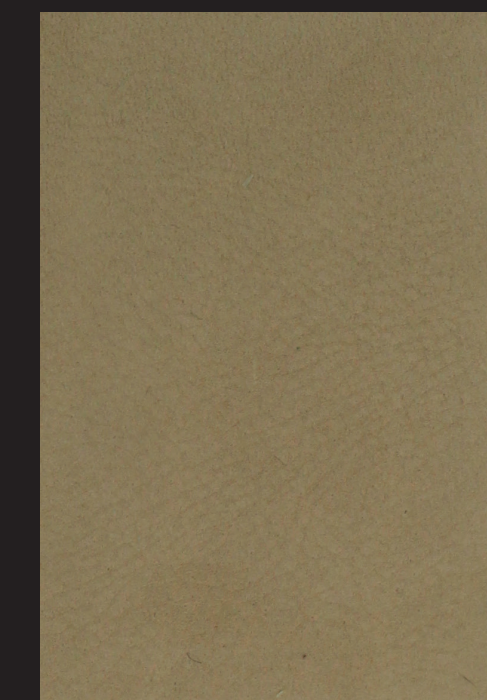
COLOUR # 37 FOREST GREEN



COLOUR # 5 BEIGE



COLOUR # 4 PEARL



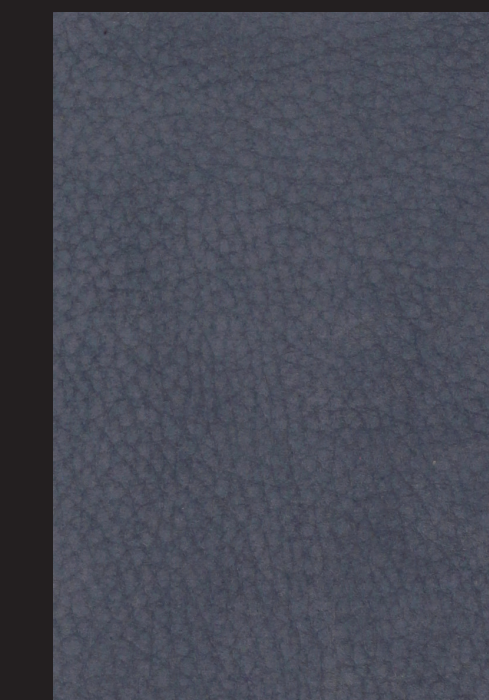
COLOUR # 3 IVORY



COLOUR # 9 PINK



COLOUR # 10 VIOLET



COLOUR # 11 LAVANDER



COLOUR # 34 CHERRY



COLOUR # 33 AMARANTH



COLOUR # 35 PLUM

CARATTERISTICHE DELLA PELLE

ORIGINE PELLE : TORI EUROPEI
ORIGIN : EUROPEAN BULLS
CONCIA : AL CROMO
TANNING : AT CHROME
TINTURA : COLORANTI ACIDI E PREMETALLIZZATI
DYE : PREMETHALLIZED AND ACID DYES

SPECIFICHE DETAILED LIST	TEST INTERNI INTERNAL TEST	VALORE LIMITE MAXIMUM VALUE	METODO METHOD
Resistenza allo strappo Tear strenght	> 5 Kg/mm	> 4 Kg/mm	UNI 3377
Solidità alla luce Light resistance	> 3	> 3	UNI 3377

RESISTENTE AI LIQUIDI A BASE OLEOSA E ACQUOSA. TESTATO 3M SCOTCHGARD
RESISTANT TO OIL AND WATER SPILLS. TESTED FOR 3M SCOTCHGARD

Leather

Respinge i liquidi a base oleosa e acquosa.
Facilita la pulitura.
La pelle mantiene più a lungo un aspetto nuovo.

Durable resistance to oil and water spills.
Makes cleaning easier.
Keeps leather looking good longer.

Leather

www.giorgiocollection.it

Certificazioni: BS5852 source 0, 1

Le nostre pelli sono idrorepellenti e il nostro trattamento ne protegge il manto. Con una semplice spugna umida lo sporco viene rimosso facilmente. Abbiamo anche kit di pulizia ad hoc in caso di macchie più difficili da rimuovere.

Origine pelle: Tori europei
Concia: Al cromo
Tintura: Coloranti acidi e premetallizzati
Rifinitone: Resistente ai liquidi a base oleosa e acquosa

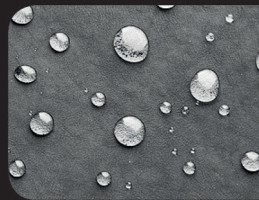
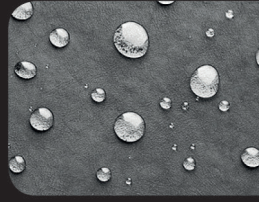
Specifiche	Valore	Metodo
Solidità del colore:	> 3	UNI 9427
Resistenza allo strappo:	> 5 kg/mm	UNI 3377

Certifications: BS5852 source 0, 1

Our leathers are water repellent and our treatment protects the hide. Dirt is easily removed with a wet sponge. We also have a cleaning kit in case of though stains.

Origin: European bulls
Tanning: Chrome tanning
Dyeing: Premetalized and acid dyes
Finishing: Resistant to oil and water spills

Specifics:	Value	Method
Colour fastness to artificial light:	> 3	UNI 9427
Tear resistance:	> 5 kg/mm	UNI 3377

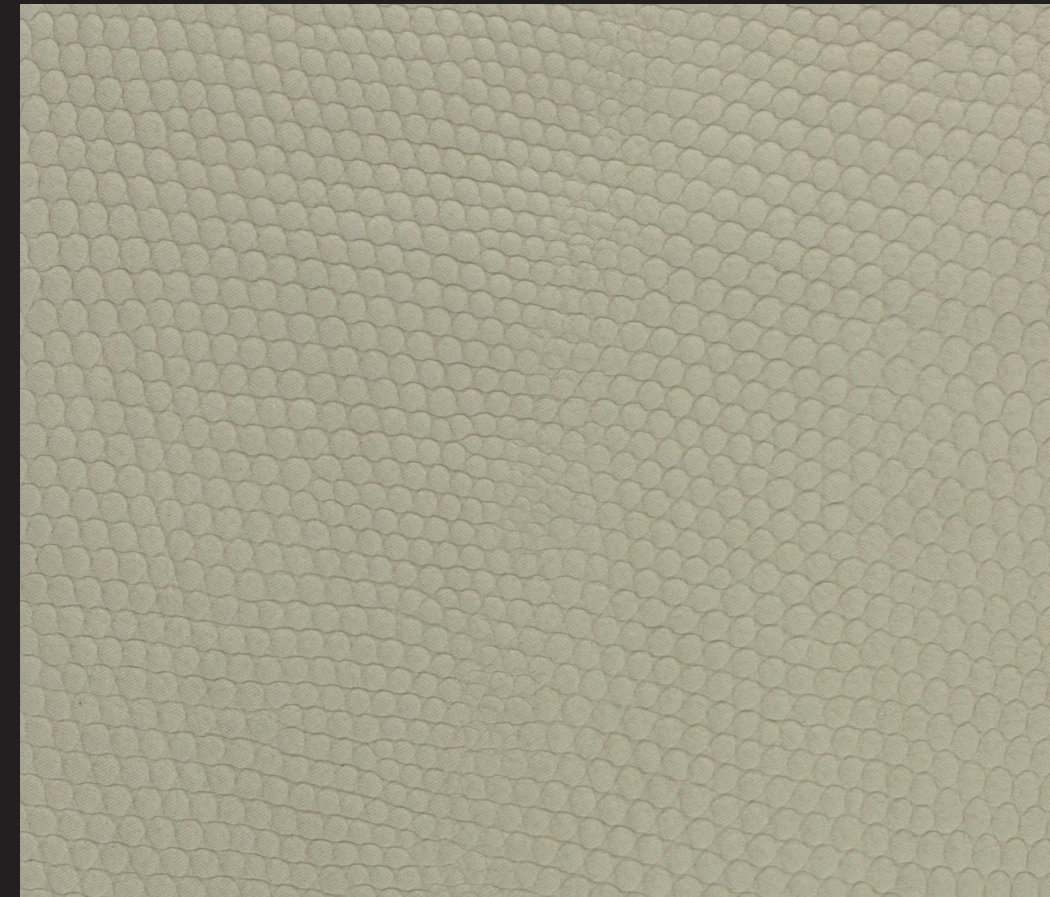


NABUK STAMPED LEATHER



giorgio collection

LUXURY EXPERIENCE
MADE IN ITALY



COL. # 5 BEIGE

Pelli vitellone fiore provenienza Europea, conciate con cromo, tinte in botte all'anilina, grana naturale, asciugate all'aria, rifinite con resine acriliche, fissate con poliuretani in dispersione acquosa.
Misura media m² 4,22/4,5 - Spessore mm. 0,9/1,3

Full-grain European ox or heifer calf, chrome tanned, aniline-dyed in drums, natural-grain, air dried, finished with acrylic resins, fixed with polyurethane in wather dispersion.
Average size: 4,2/4,5 m² - Thickness: 0,9/1,3 mm

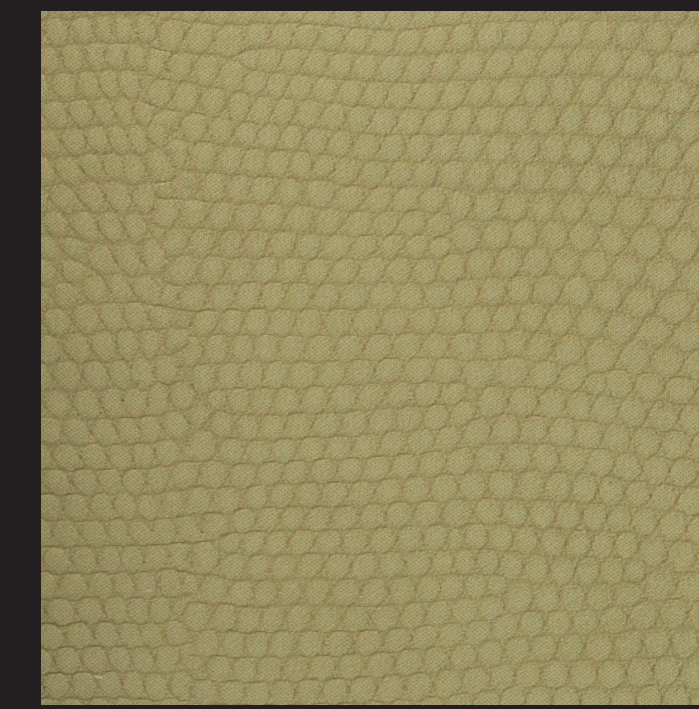
Peaux de veau fleur en provenance Europe, tannées au chrome, teintées en tonneau à l'aniline, grain naturel, séchées à l'air, finies avec de résines acryliques, fixées par polyuréthane en dispersion aqueuse.
Dimension moyenne: 4,2/4,5 m² - Épaisseur: 09/1,3 mm



COLOUR # 1 LIGHT BROWN



COLOUR # 2 DARK BROWN



COLOUR # 7 LIGHT GREEN



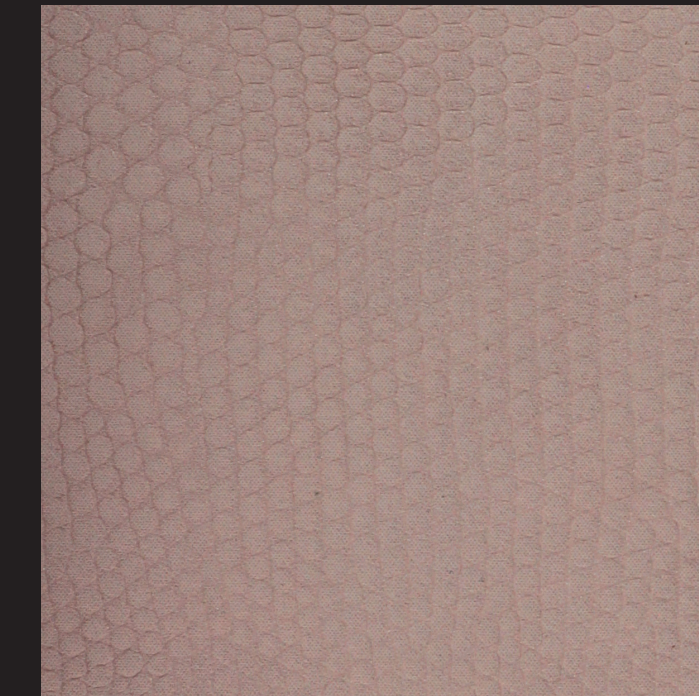
COLOUR # 8 OLIVE



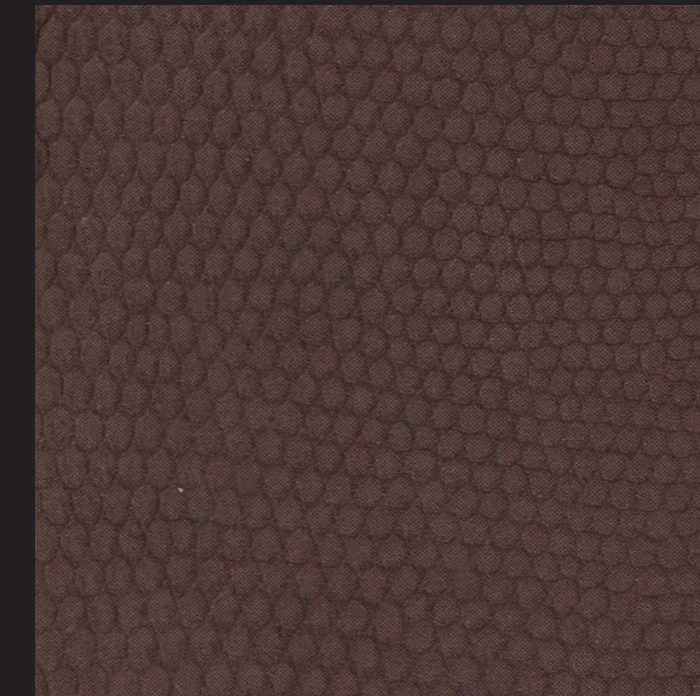
COLOUR # 3 CREAM



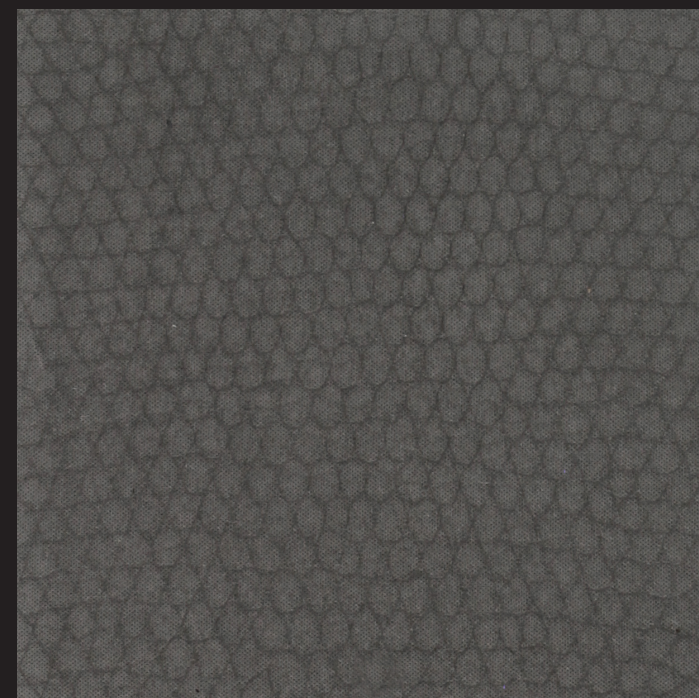
COLOUR # 4 IVORY



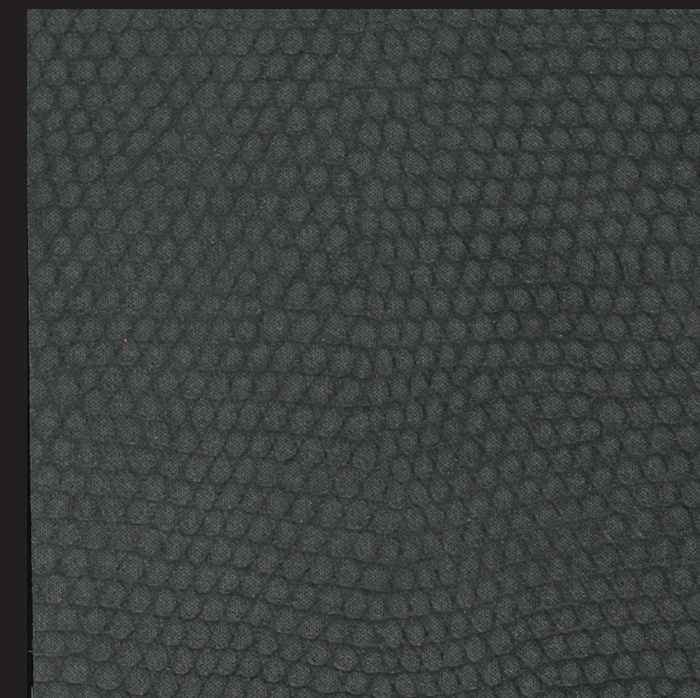
COLOUR # 9 PINK



COLOUR # 10 VIOLET



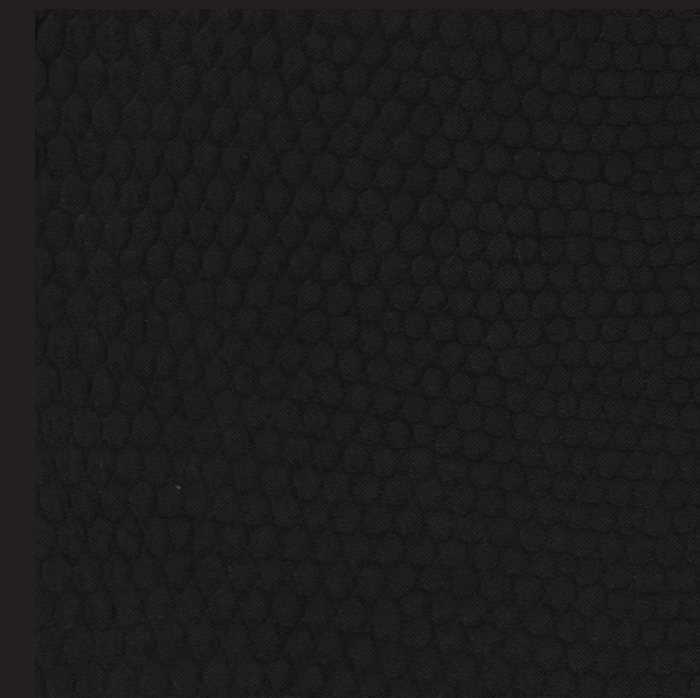
COLOUR # 6 GREY



COLOUR # 12 SLATE GREY



COLOUR # 11 LAVANDER



COLOUR # 13 BLACK

“CHARISMA” VELVET



giorgio collection

LUXURY EXPERIENCE
MADE IN ITALY



COLOUR # 07 GRANITE

COMPOSIZIONE : 100% POLIESTERE
composition : 100% polyester
 ALTEZZA MINIMA GARANTITA : cm 145
minimum guaranteed width : cm 145
 RIPETIZIONE VERTICALE : 0,0
vertical pattern repeat : 0,0
 RIPETIZIONE ORIZZONTALE : 0,0
horizontal pattern repeat : 0,0
 PESO : 310 ± 5% g/m
weight : 310 ± 5% g/m
 RES. ALL'ABRASIONE : 1000.000 (giri)
abrasion resistance test EN ISO 12947-2 (Martindale) : 100.000 (turns)
 FLAMCODE : UK/EIRE Flamcode

IMPORTANTE: Non usare detersivi che contengono ossidanti o candeggianti ottici
 IMPORTANT: Do not use detergents containing oxidants or optical bleaches



COLOUR # 01
ALABASTER



COLOUR # 09
PARCHMENT



COLOUR # 03
LINEN



COLOUR # 33
TERRACOTTA



COLOUR # 15
OCHRE



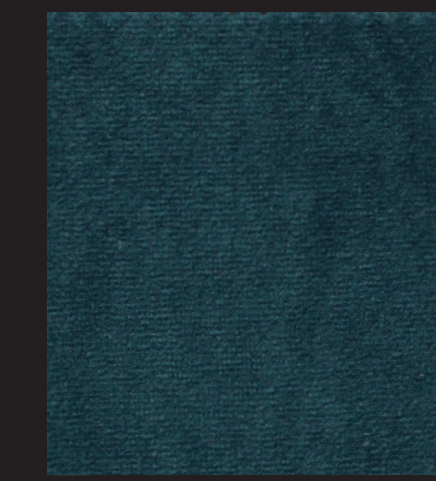
COLOUR # 16
ALCHEMILLA



COLOUR # 24
INDIGO



COLOUR # 25
INK



COLOUR # 22
OCEAN



COLOUR # 14
SAND



COLOUR # 13
BISCUIT



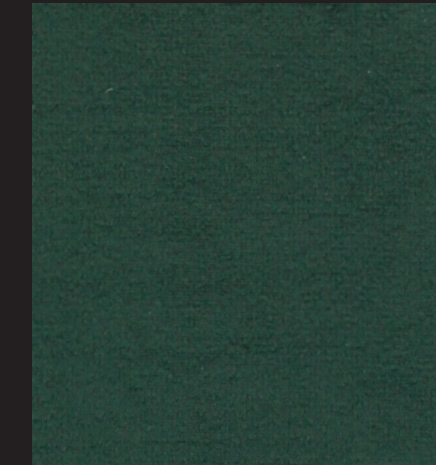
COLOUR # 12
DOESKIN



COLOUR # 17
MOSS



COLOUR # 18
EMERALD



COLOUR # 19
FIR



COLOUR # 08
DOVE



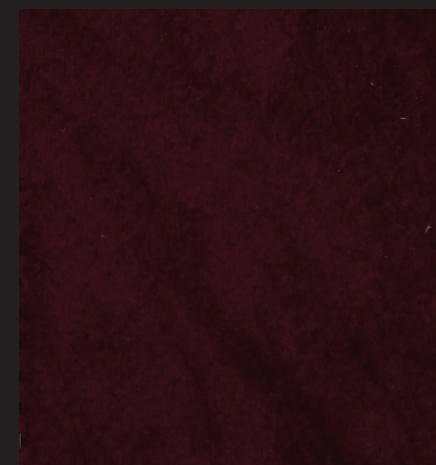
COLOUR # 02
ZINC



COLOUR # 04
GRAPHITE



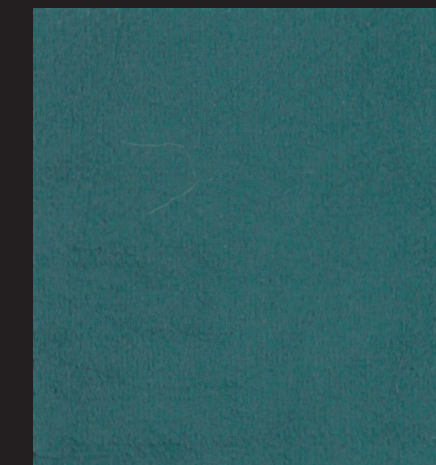
COLOUR # 11
MOLESKIN



COLOUR # 31
MULBERRY



COLOUR # 32
VERMILION



COLOUR # 21
TEAL



COLOUR # 20
DUCK EGG



COLOUR # 03
SMOKE



COLOUR # 06
SLATE



COLOUR # 05
RAVEN



COLOUR # 28
CORAL



COLOUR # 29
PEONY



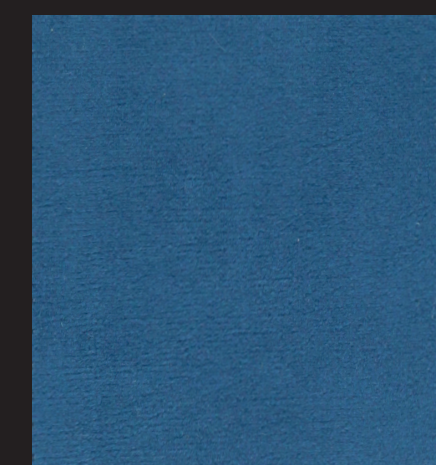
COLOUR # 30
MAGENTA



COLOUR # 27
CURRANT



COLOUR # 26
AUBERGINE



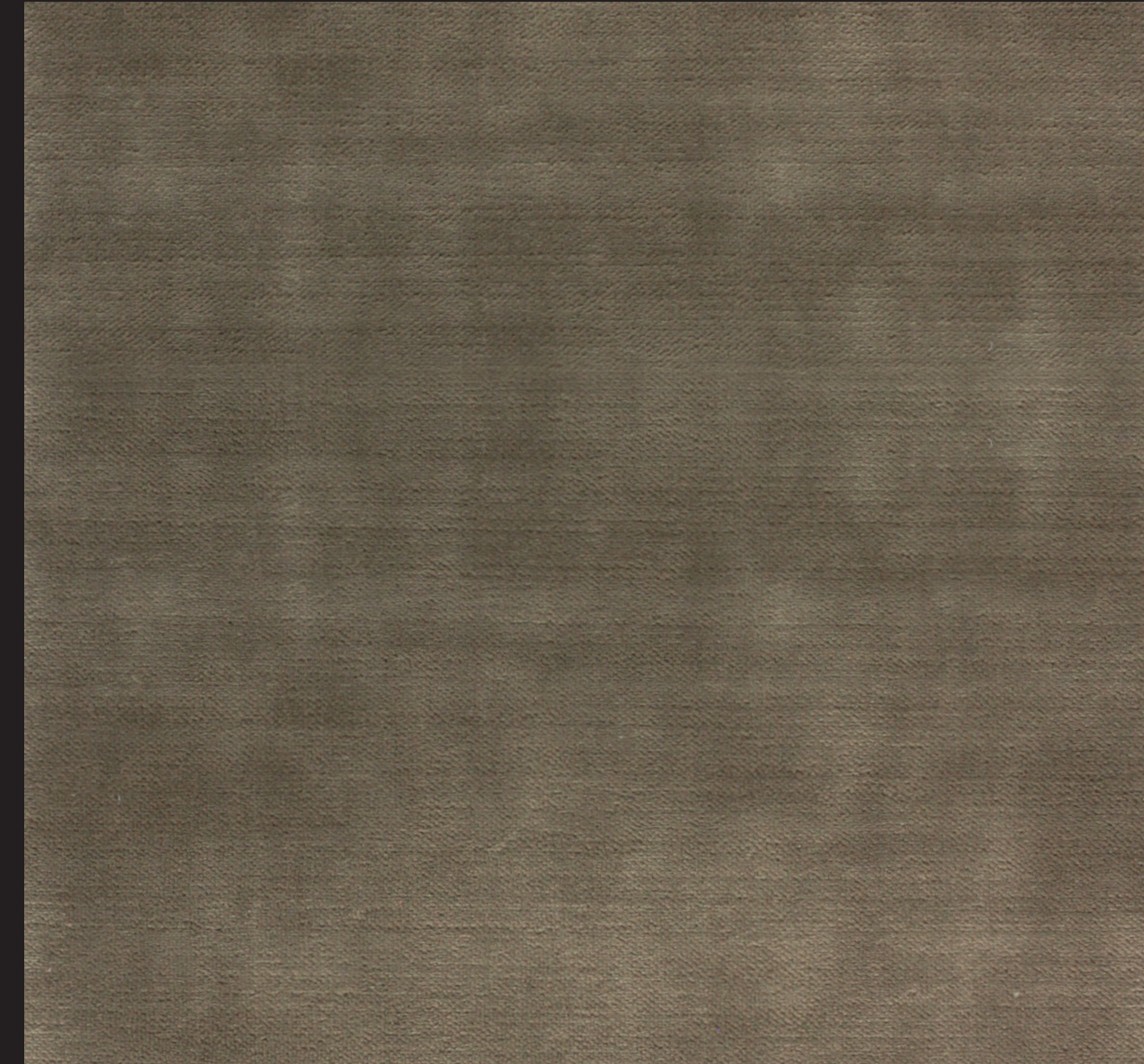
COLOUR # 23
MARINE

“EMPIRE” VELVET



giorgio collection

LUXURY EXPERIENCE
MADE IN ITALY



Art. DOE 17

Composition: 55% VI 26% CO 19% PL Pile: 100% VI
IGN 0 Cigarette Pass. Exempt IGN. 5 Interliner



Usage/Martindale 40.000
Fire retardancy

— Width: 143 cm (56 1/2") Repeat: 10 cm (0") — 0 cm (0") —

IMPORTANTE: Non usare detersivi che contengono ossidanti o candeggianti ottici
IMPORTANT: Do not use detergents containing oxidants or optical bleaches



Art. PEARL 01



Art. OPAL 10



Art. VELLUM 11



Art. GRAPE 24



Art. PERSIAN 23



Art. RED 27



Art. PAPRIKA 26



Art. INK 19



Art. OLIVINE 28



Art. MOUSE 03



Art. MOON ROCK 12



Art. LICHEN 06



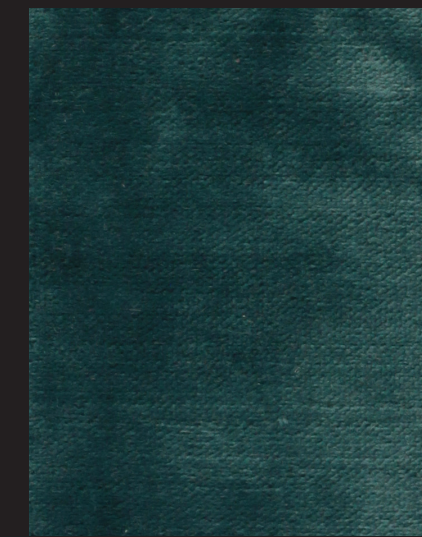
Art. MOSS 07



Art. SEAL 08



Art. OTTER 09



Art. OTTANIO 20



Art. AZURITE 21



Art. MINERAL 18



Art. ASH 04



Art. FOSSIL 13



Art. TRUFFLE 02



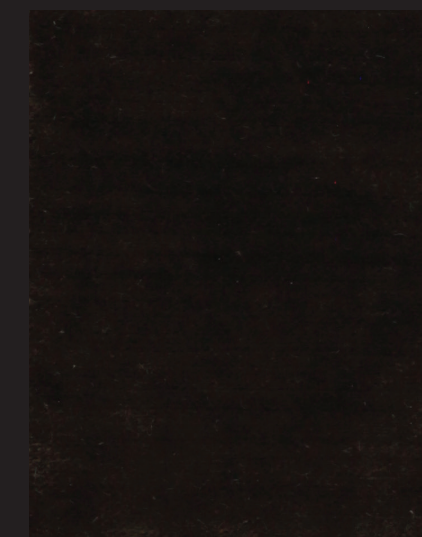
Art. MONEL 15



Art. CINDER 05



Art. MIDNIGHT 22



Art. MINK 25



Art. BRONZE 16



Art. PALE GOLD 14

FABRICS



giorgio collection

LUXURY EXPERIENCE
MADE IN ITALY



COLOUR # 13



COLOUR # 22



COLOUR # 95



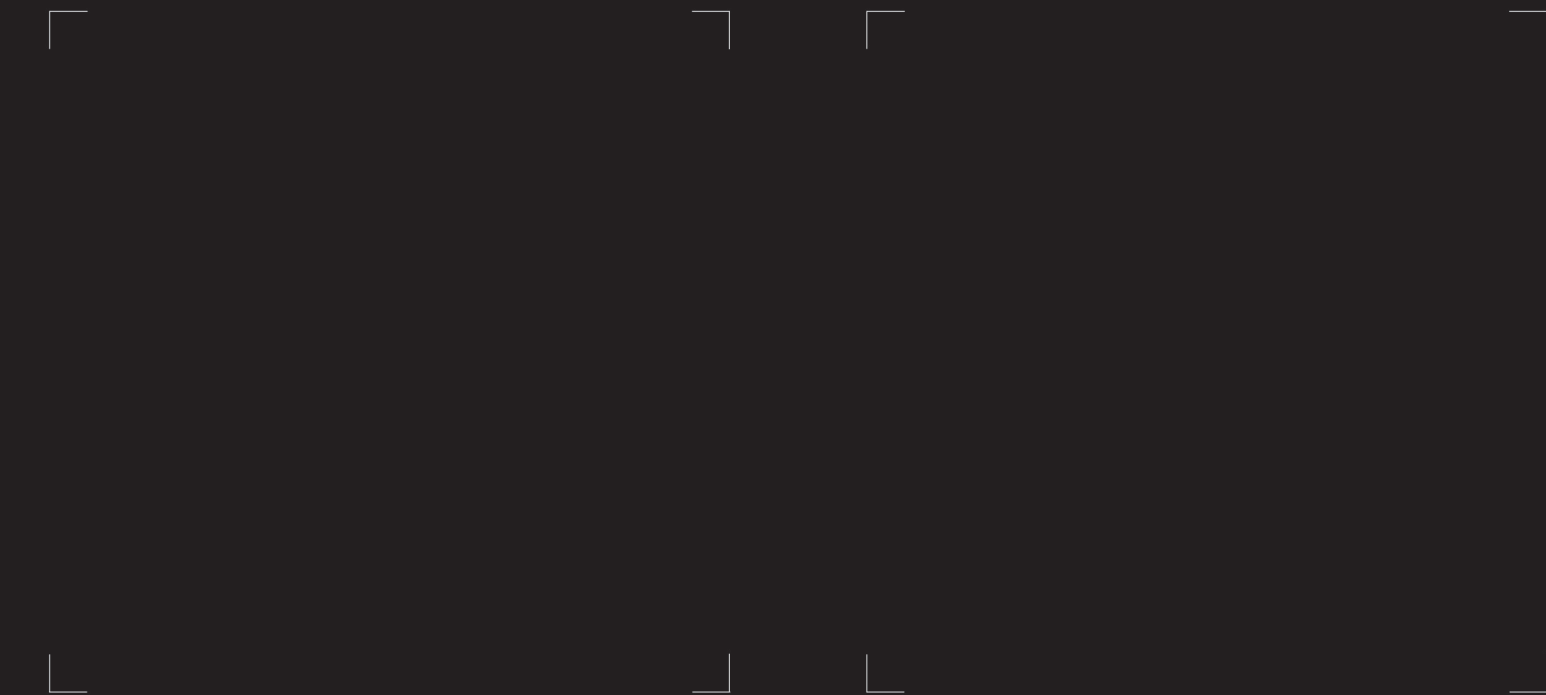
COLOUR BLACK



COLOUR # 24



COLOUR # 687

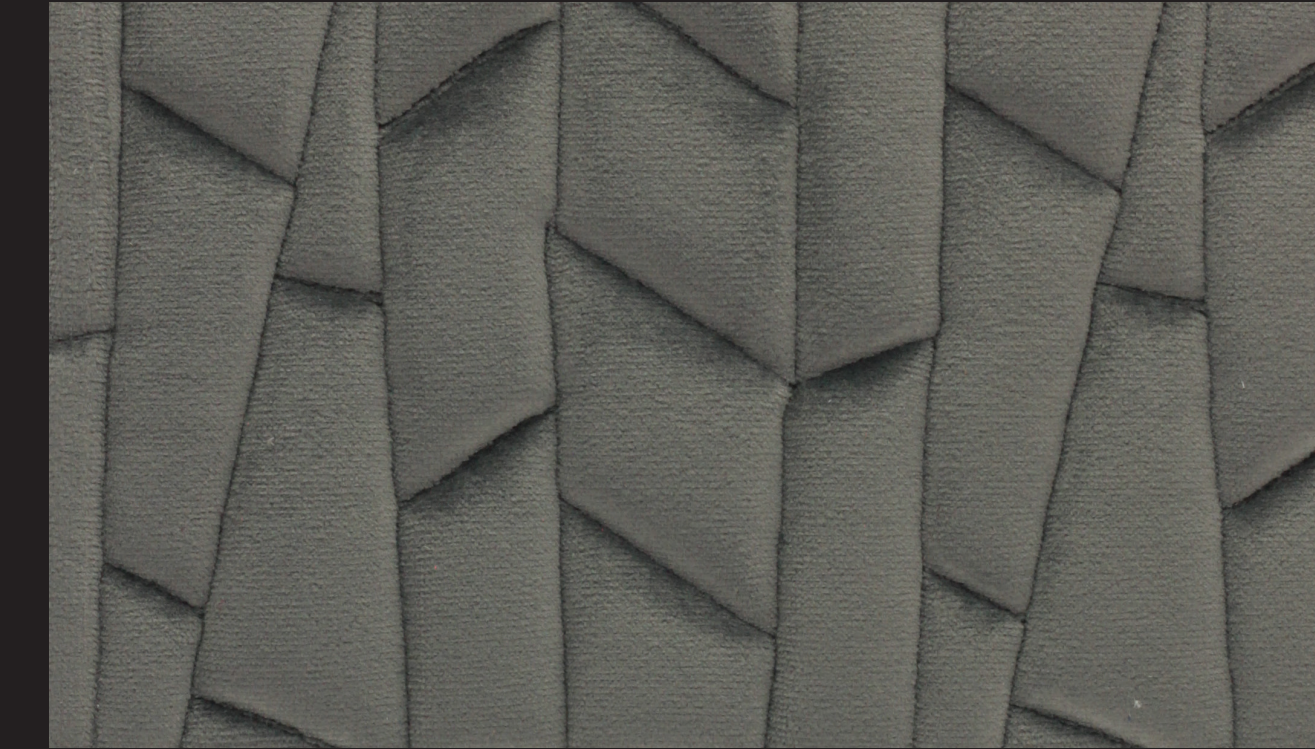


COLOUR # 64

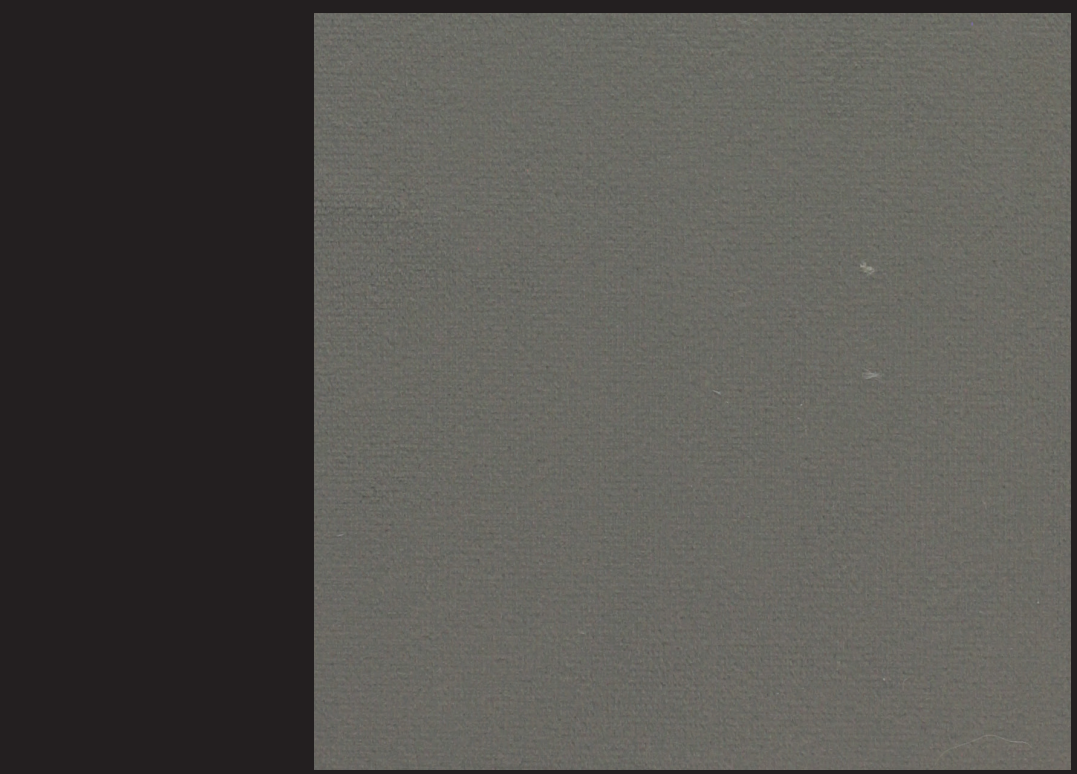
COMPOSIZIONE : 100% POLIESTERE
composition : 100% polyester
ALTEZZAMINIMA GARANTITA : cm 140
minimum guaranteed width : cm 140
PESO : 350 ± 5% g/m
weight : 350 ± 5% g/m
FINISSAGGI/TRATTAMENTI : REPELLENTE ALL'ACQUA
finishing : water repellent
RES. ALL'ABRASIONE : 20.000 (giri)
abrasion resistance test EN ISO 12947-2 (Martindale) : 20.000 (turns)
RESISTENZA ALLA FORMAZIONE DI PILLING : 4
pilling test ISO 12945-2 (Marindale) : 4
RIENTRO AL LAVAGGIO 30 (°C) TRAMA-ORDITO : 1 %
Dimension fatness to washing 30 (°C) weft/warp : 1 %



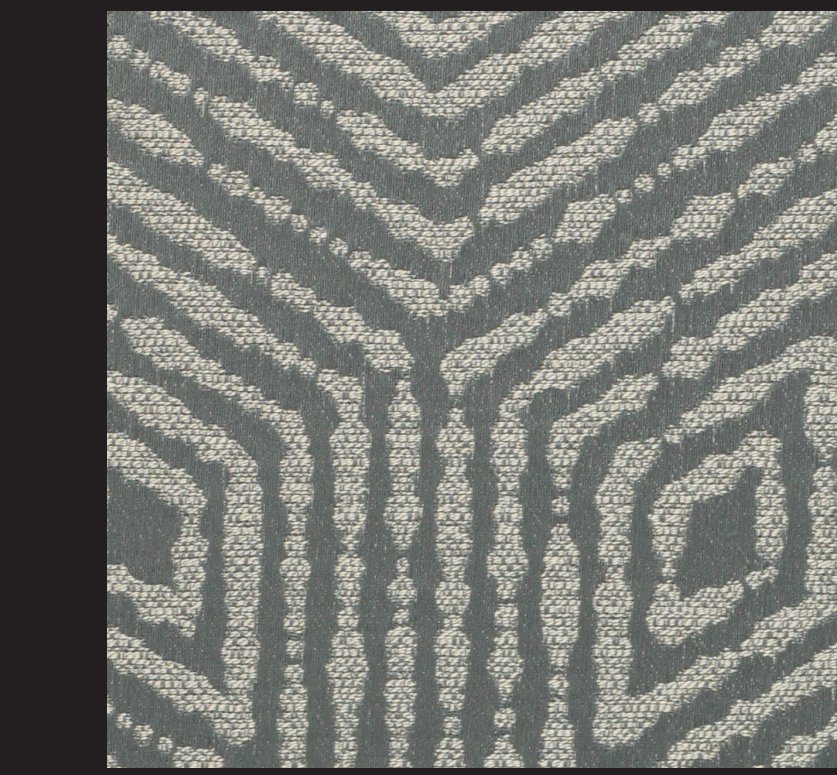
"FABRICS/LEATHERS" COMBINATIONS



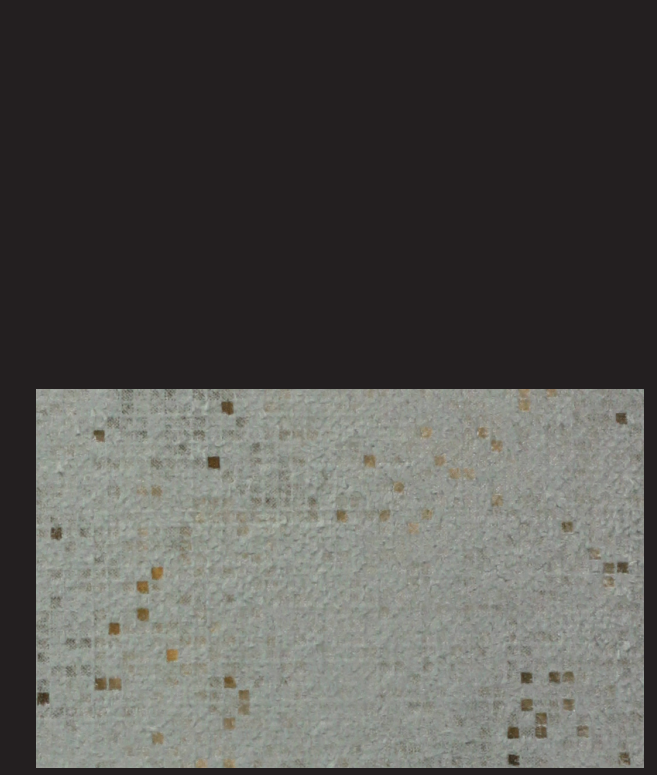
CHARISMA VELVET COL. 07 GRANITE QUILTED



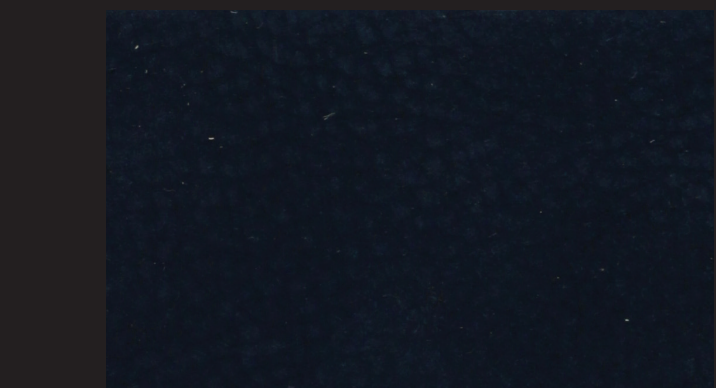
CHARISMA VELVET COL. 07 GRANITE



RF 7835/04 ERTE PACIFIC



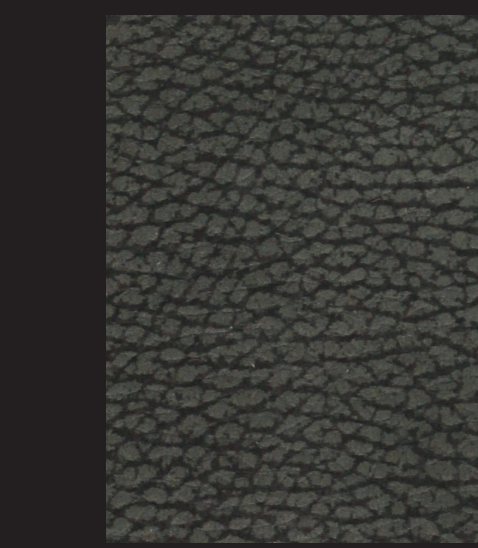
RB 9058/04 SUSA CASPIAN



NABUK NATURAL LEATHER COL. 23 BLUE



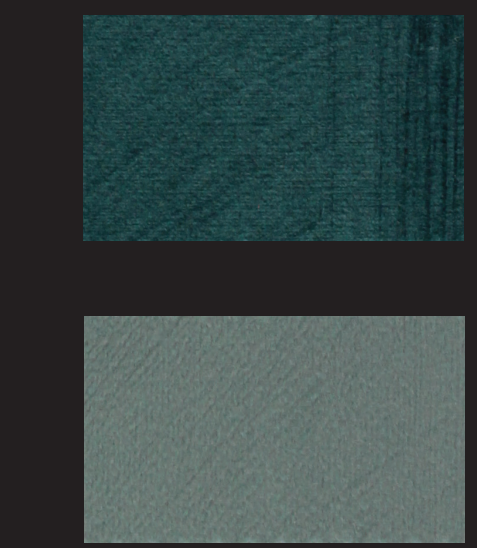
KD-K 5185/04 THREAD TEAL



NABUK LEATHER TAPIRO COL. 24 SLATE GREY



CHARISMA VELVET COL. 03 LINEN



CHARISMA VELVET COL. 20 DUCK EGG



RF 7835/01 ERTE TAMARIND



RB 9058/03 SUSA BASALT



KDK 5185/02 THREAD ANTIQUE GOLD



NABUK NATURAL COL. 15 AVANA



NABUK NATURAL COL. 17 ANTYLOP



ZL-Z 565/04 ELLICE TOBACCO



ZL-Z 565/02 ELLICE LINEN



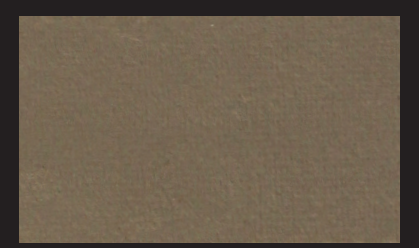
NABUK LEATHER TAPIRO COL. 28 ANTYLOP



CHARISMA VELVET COL. 15 OCHRE



CHARISMA VELVET COL. 12 DOESKIN



CHARISMA VELVET COL. 13 BISCUIT



RF 7835/02 ERTE ASPEN



ZL-Z 565/01 ELLICE MOONBEAM



CHARISMA VELVET COL. 01 ALABASTER



CHARISMA VELVET COL. 08 DOVE



LEATHER COL. 1135



ZL-Z 565/05 SPACEDUST



ZL-Z 565/06 ELLICE MINERAL



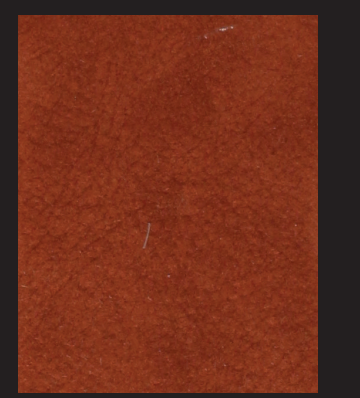
CHARISMA VELVET COLL. 11 MOLESKIN



KDK 5185/03 THREAD TURMERIC



CHARISMA VELVET COLL. 33 TERRACOTTA

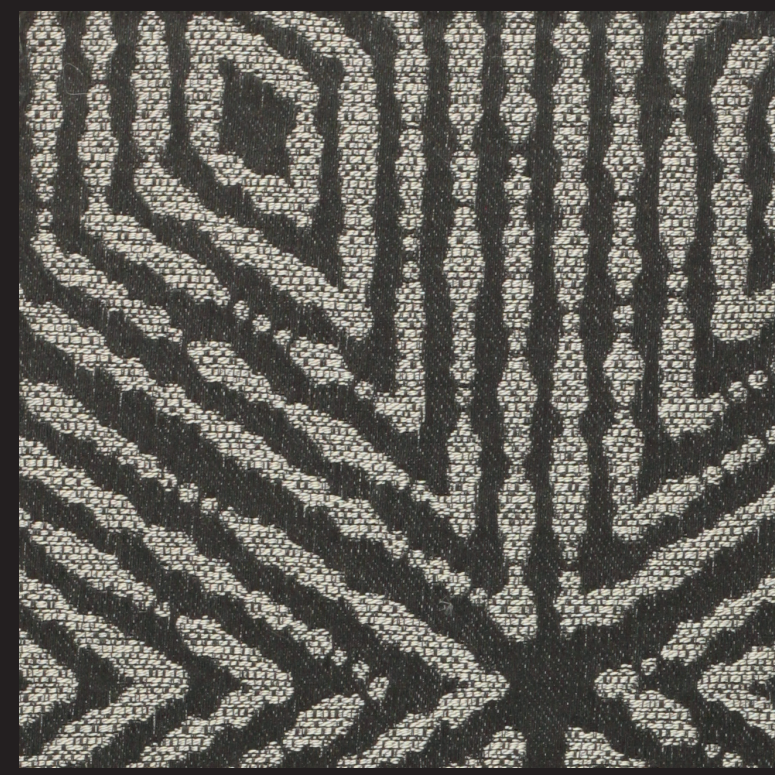


NABUK NATURAL COL. 19 AMBER

CHARISMA VELVET COL. 01 ALABASTER

CHARISMA VELVET COL. 08 DOVE

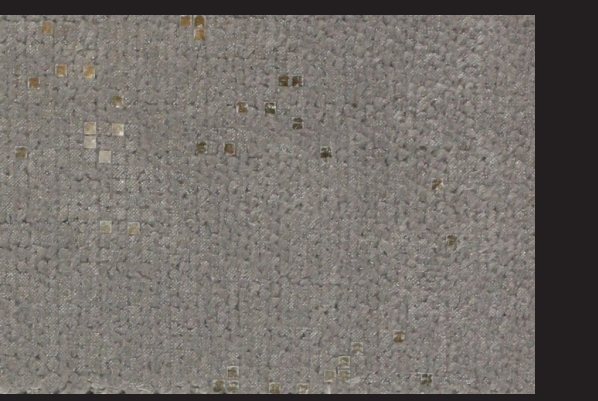
LEATHER COL. 1135



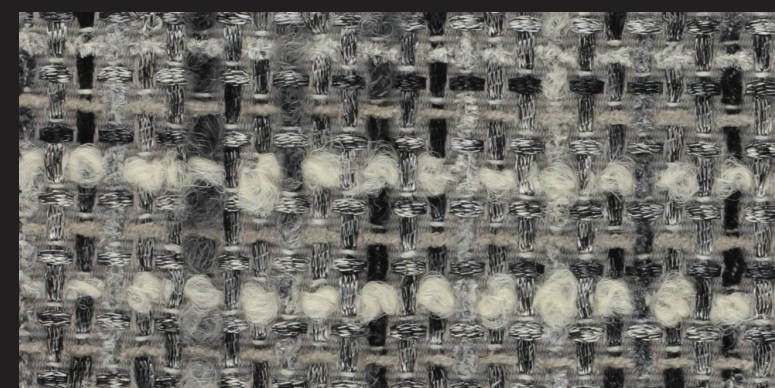
RF 7835/03 ERTE GREY SEAL



CHARISMA VELVET COL. 25 INK



RB 9058/02 SUSA ZIRCONIUM



KD-K 5158/01 THREAD STORM



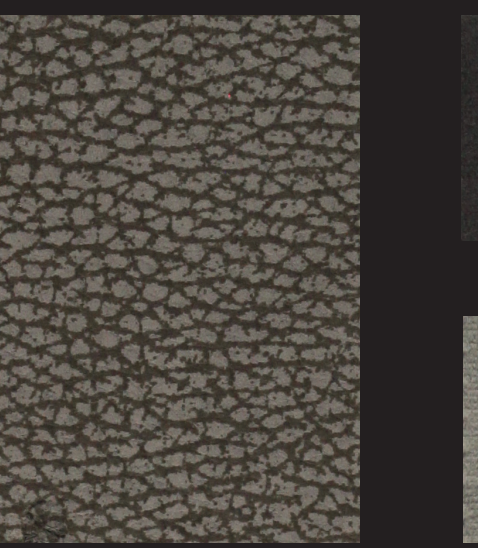
NABUK NATURAL LEATHER COL. 06 STONE



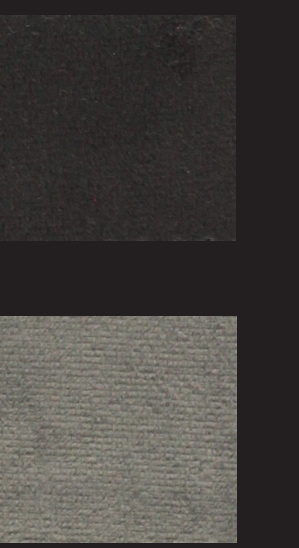
LEATHER COL. 1112



ZL-Z 565/03 ELLICE SILVER GREY



NABUK LEATHER TAPIRO COL. 21 GREY



CHARISMA VELVET COL. 07 GRANITE

ERTE FABRIC
RF-7835/01 Erte Tamarind
RF-7835/02 Erte Aspen
RF-7835/03 Erte Grey Seal
RF-7835/04 Erte Pacific
95% Trevira - 5% Polyester
H. 140

IMPORTANTE: Non usare detersivi che contengono ossidanti o candeggianti ottici.
IMPORTANT: Do not use detergents containin oxidands or optical bleachesg



SUSA FABRIC
RB-9058/02 Susa Zirconium
RB-9058/03 Susa Basalt
RB-9058/04 Susa Caspian
49% Viscose - 39% Cotton - 11% Polyester
1% Polyamide
H. 140

IMPORTANTE: Non usare detersivi che contengono ossidanti o candeggianti ottici.
IMPORTANT: Do not use detergents containin oxidands or optical bleachesg



THREAD FABRIC
KD-K 5185/01 Thread Storm
KD-K 5185/02 Thread Antique Gold
KD-K 5185/03 Thread Turmeric
KD-K 5185/04 Thread Seal
46% Cotton - 32% Polyamide - 10% Wool
8% Acrylic - 4% Viscose
H. 140

IMPORTANTE: Non usare detersivi che contengono ossidanti o candeggianti ottici.
IMPORTANT: Do not use detergents containin oxidands or optical bleachesg



ELLICE FABRIC
ZL-Z 565/01 Ellice Moonbeam
ZL-Z 565/02 Ellice Linen
ZL-Z 565/03 Ellice Silver Grey
ZL-Z 565/04 Ellice Tobacco
ZL-Z 565/05 Ellice Spacedust
ZL-Z 565/06 Ellice Mineral
43% Linen - 28% Viscose - 16% Cotton
10% Polyester - 3% Polyamide
H. 140

IMPORTANTE: Non usare detersivi che contengono ossidanti o candeggianti ottici.
IMPORTANT: Do not use detergents containin oxidands or optical bleachesg



CHARISMA VELVET
Col. 01 Alabaster
Col. 03 Linen
Col. 06 Slate
Col. 07 Granite
Col. 08 Dove
Col. 11 Moleskin
Col. 12 Doeskin
Col. 13 Biscuit
Col. 15 Ochre
Col. 19 Amber
Col. 20 Duck Egg
Col. 21 Teal
Col. 25 Ink
Col. 33 Terracotta
100% Polyester
H. 145 - UK Fire Flamcode

IMPORTANTE: Non usare detersivi che contengono ossidanti o candeggianti ottici.
IMPORTANT: Do not use detergents containin oxidands or optical bleachesg



NABUK NATURAL LEATHER
Col. 23 Blue
Col. 15 Avana
Col. 17 Antylop
Col. 19 Amber
Col. 06 Stone

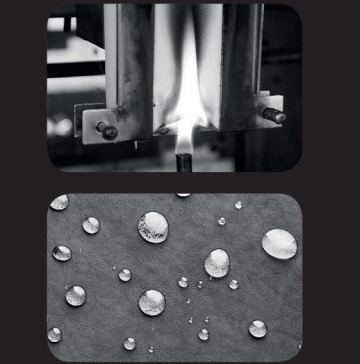
CARATTERISTICHE DELLA PELLE
RESISTENTE AI LIQUIDI A BASE OLEOSA E ACQUOSA. TESTATO 3M SCOTCHGARD
RESISTANT TO OIL AND WATER SPILLS. TESTED FOR 3M SCOTCHGARD



NABUK LEATHER TAPIRO
Col. 24 Slate Grey
Col. 28 Antylop
Col. 21 Grey

Certifications: BS5852 source 0, 1

Our leathers are water repellent and our treatment protects the hide. Dirt is easily removed with a wet sponge. We also have a cleaning kit in case of tough stains.



Origin: European bulls
Tanning: Chrome tanning
Dyeing: Premetalized and acid dyes
Finishing: Resistant to oil and water spills

Specifics:	Value	Method
Colour fastness to artificial light:	> 3	UNI 9427
Tear resistance:	> 5 kg/mm	UNI 3377

LEATHER
Col. 1135
Col. 1112

CARATTERISTICHE DELLA PELLE

Pelli vitellone fiore provenienza Europea, conciate con cromo, tinte in botte all'anilina, grana naturale, asciugate all'aria, rifinite con resine acriliche, fissate con polietilene in dispersione acquosa. Misura media m² 4,22/4,5 - Spessore mm. 0,9/1,1

Full-grain European ox or heifer calf, chrome tanned, aniline-dyed in drums, natural-grain, air dried, finished with acrylic resins, fixed with polyurethane in water dispersion. Average size: 4,2/4,5 m² - Thickness: 0,9/1,1 mm

"INFINITY" VELVET



giorgio collection

LUXURY EXPERIENCE
MADE IN ITALY



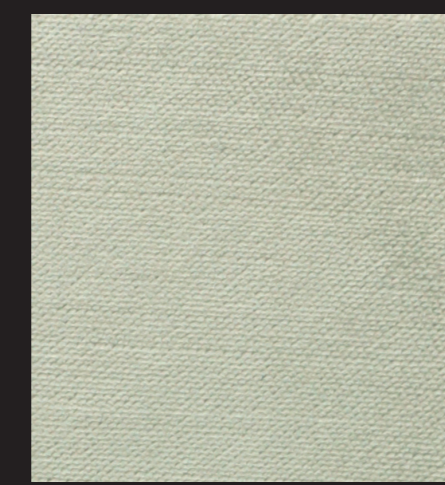
COLOUR # 33 CALICO

COMPOSIZIONE : 100% POLIESTERE
composition : 100% polyester
ALTEZZA MINIMA GARANTITA : cm 138
minimum guaranteed width : cm 138
RIPETIZIONE VERTICALE : 0,0
vertical pattern repeat : 0,0
RIPETIZIONE ORIZZONTALE : 0,0
horizontal pattern repeat : 0,0
PESO : 450 ± 5% g/m
weight : 450 ± 5% g/m
RES. ALL'ABRASIONE : 1000.000 (giri)
abrasion resistance test EN ISO 12947-2 (Martindale) : 100.000 (turns)

IMPORTANTE: Non usare detersivi che contengono ossidanti o candeggianti ottici
IMPORTANT: Do not use detergents containing oxidands or optical bleaches



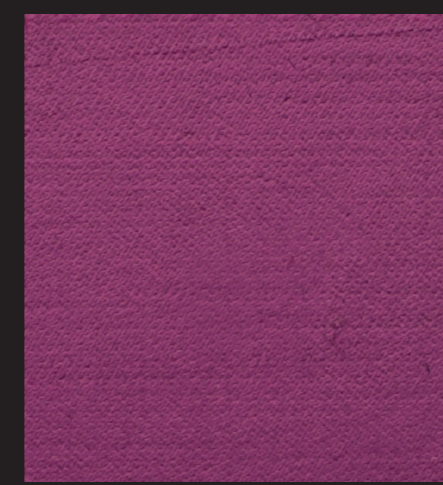
COLOUR # 35
OYSTER



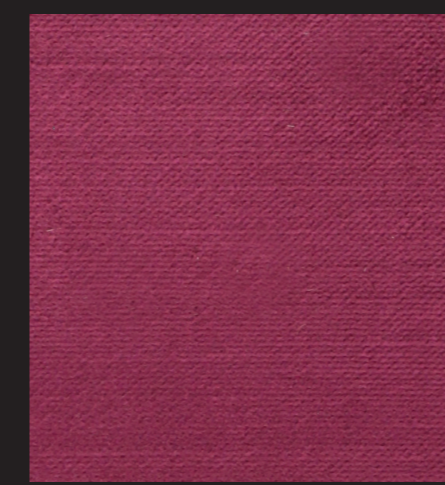
COLOUR # 34
CHALK



COLOUR # 31
DOVE



COLOUR # 41
FUCHSIA



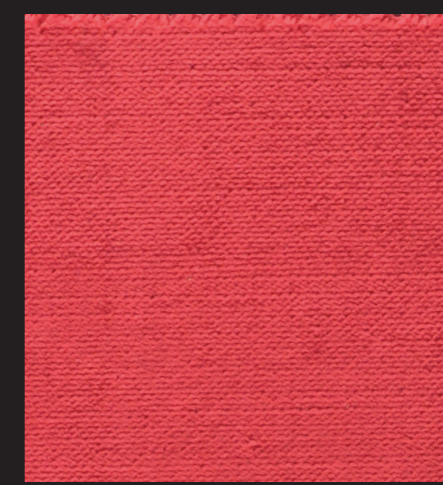
COLOUR # 45
BERRY



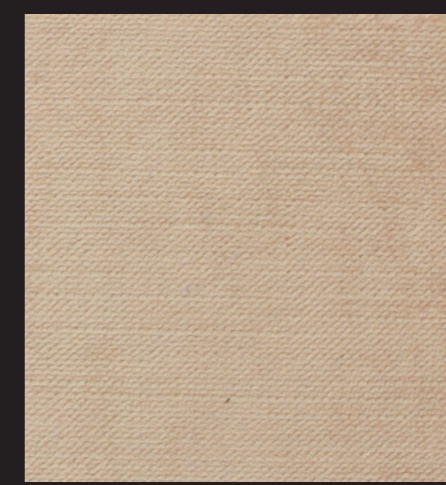
COLOUR # 47
MULBERRY



COLOUR # 46
CASSIS



COLOUR # 48
SCARLET



COLOUR # 43
BLOSSOM



COLOUR # 06
TEAL



COLOUR # 01
INDIGO



COLOUR # 02
INK



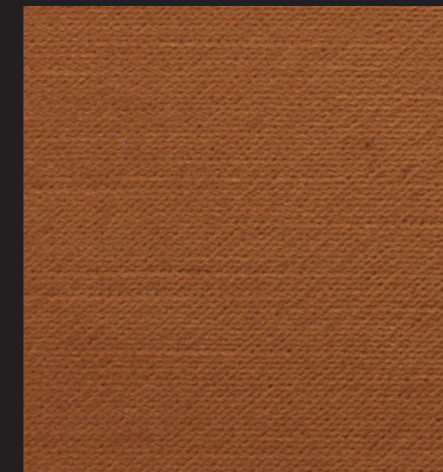
COLOUR # 18
PUTTY



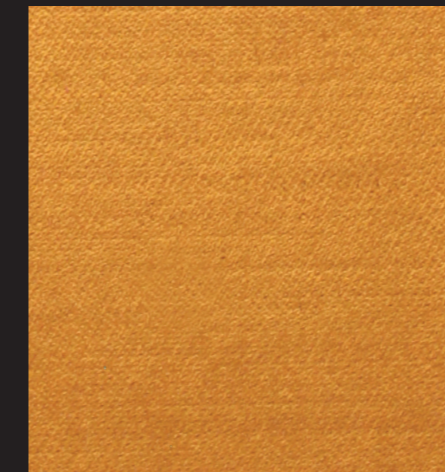
COLOUR # 17
MINK



COLOUR # 16
MOLESKIN



COLOUR # 49
RUSSET



COLOUR # 50
SAFFRON



COLOUR # 13
OCHRE



COLOUR # 15
LINEN



COLOUR # 14
HESSIAN



COLOUR # 21
DOESKIN



COLOUR # 30
PLATINUM



COLOUR # 29
SILVER



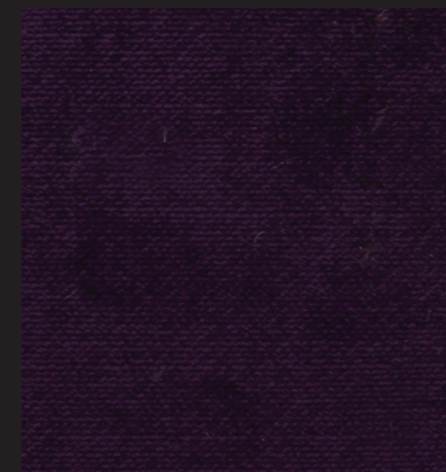
COLOUR # 27
STEEL



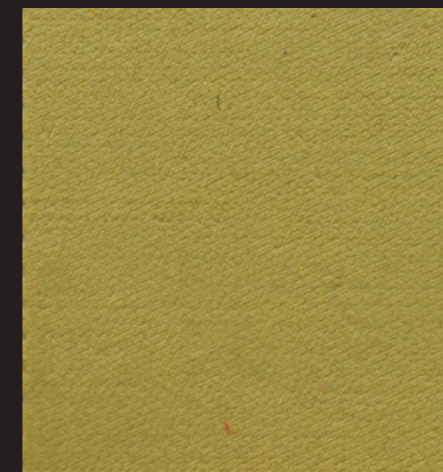
COLOUR # 36
ORCHID



COLOUR # 38
AMETYST



COLOUR # 39
PLUM



COLOUR # 12
LEMONGRAS



COLOUR # 11
LEAF



COLOUR # 10
MOSS



COLOUR # 19
ACORN



COLOUR # 20
WALNUT



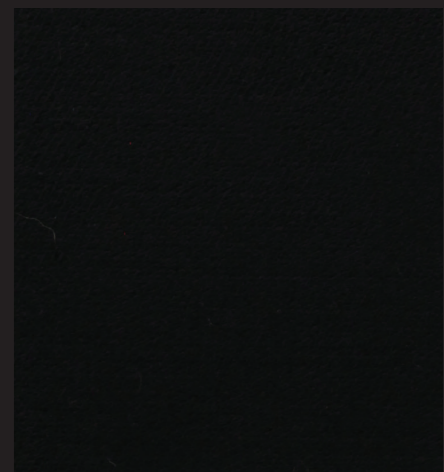
COLOUR # 22
COCOA



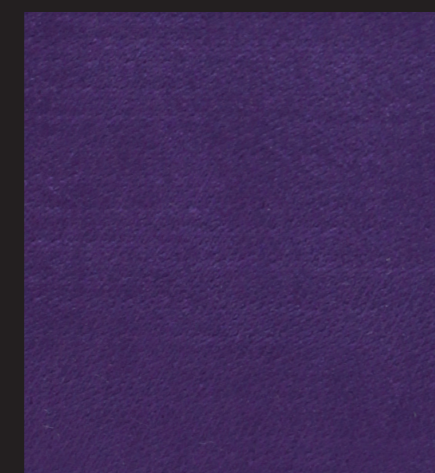
COLOUR # 26
SMOKE



COLOUR # 24
GRAPHITE



COLOUR # 23
NOIR



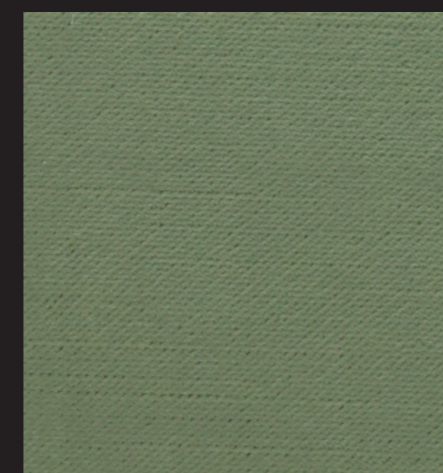
COLOUR # 40
VIOLET



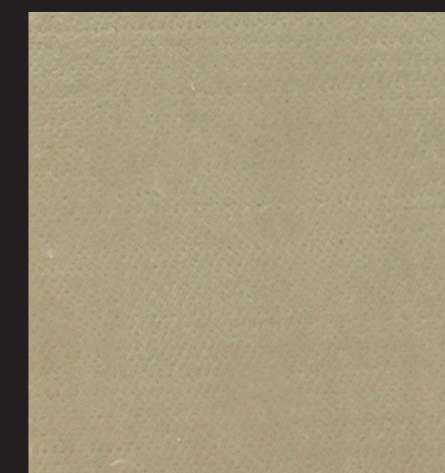
COLOUR # 42
MAGENTA



COLOUR # 44
RASBERRY



COLOUR # 08
PISTACCHIO



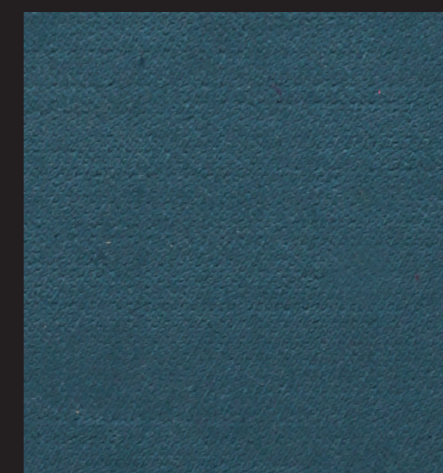
COLOUR # 09
PALE SAGE



COLOUR # 28
ZINC



COLOUR # 05
WATERFALL



COLOUR # 03
DENIN



COLOUR # 04
SKY

LEATHERS



giorgio collection

LUXURY EXPERIENCE
MADE IN ITALY



col. 1121



col. 1870



col. 1634



col. 1117



col. 1198



col. 1186



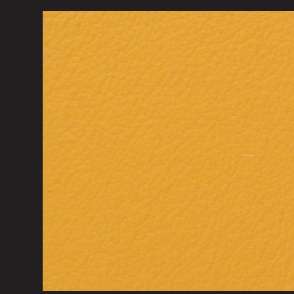
col. 1651



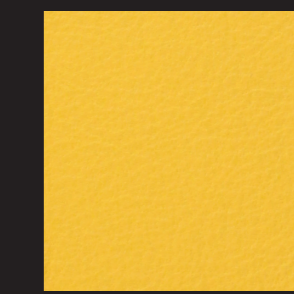
col. 1652



col. 1650



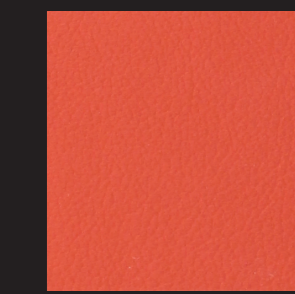
col. 1619



col. 1148



col. 1149



col. 1157



col. 1718



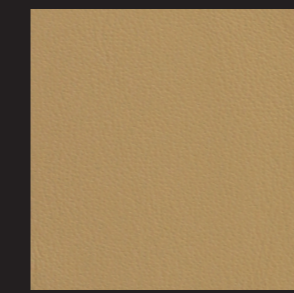
col. 1158



col. 1721



col. 1118



col. 1173



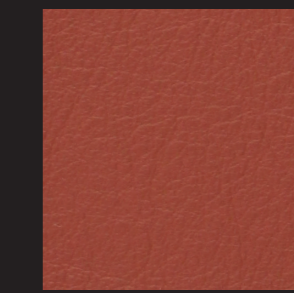
col. 1176



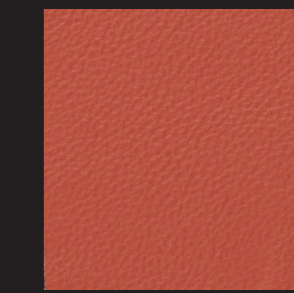
col. 1177



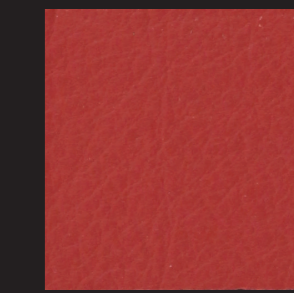
col. 1178



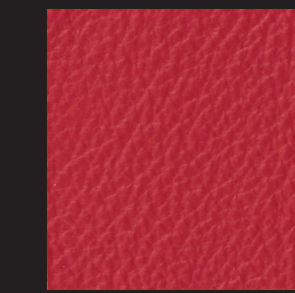
col. 1656



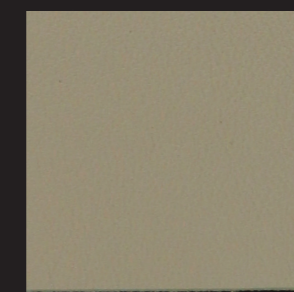
col. 1616



col. 1160



col. 1113



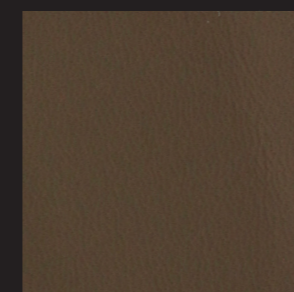
col. 1179



col. 1647



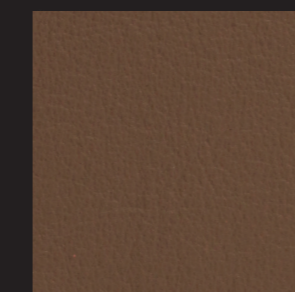
col. 1226



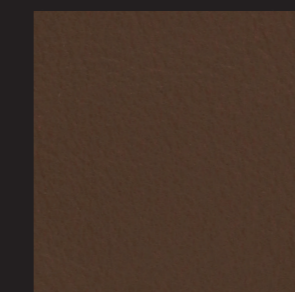
col. 1129



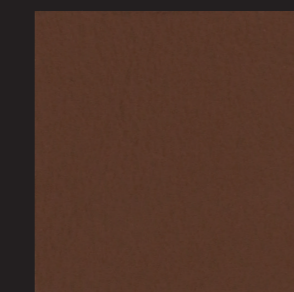
col. 1638



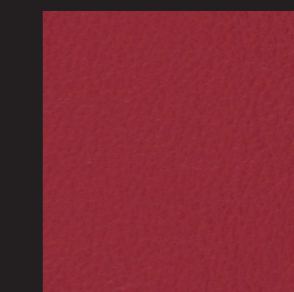
col. 1609



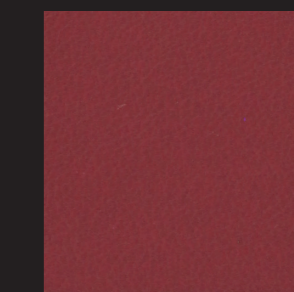
col. 1607



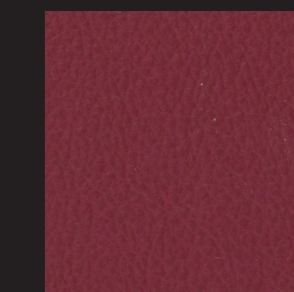
col. 1131



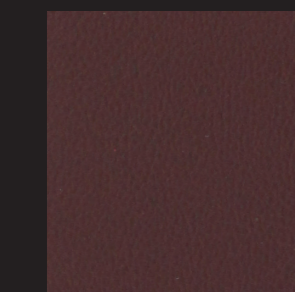
col. 1657



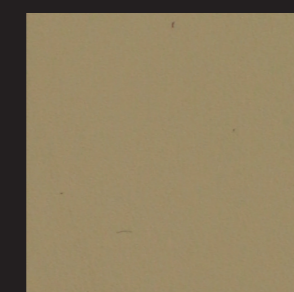
col. 1110



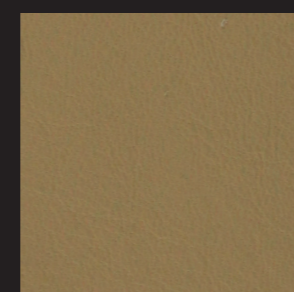
col. 1655



col. 1108



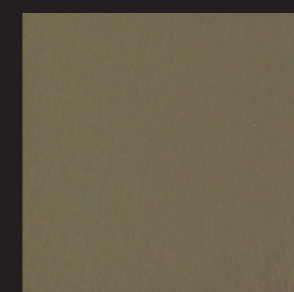
col. 1180



col. 1121



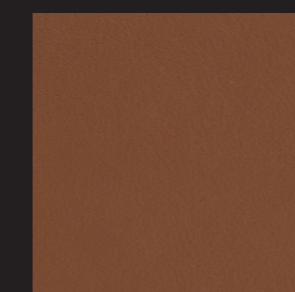
col. 1181



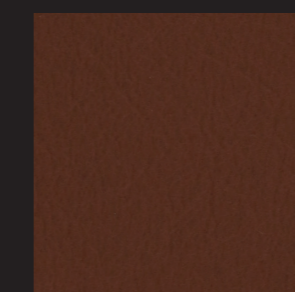
col. 1639



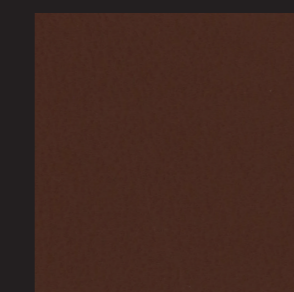
col. 1174



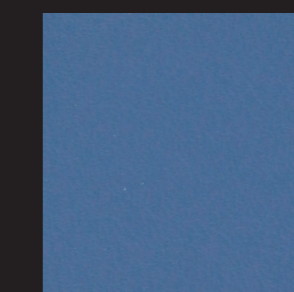
col. 1152



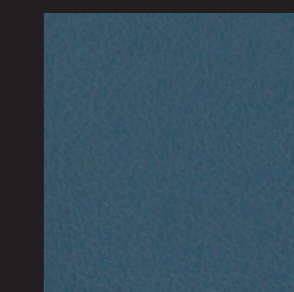
col. 1662



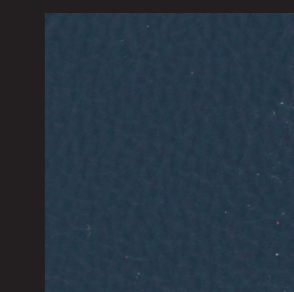
col. 1137



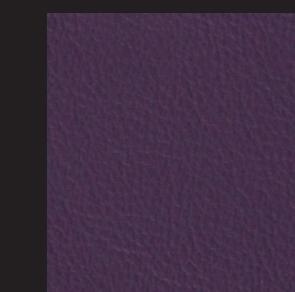
col. 1145



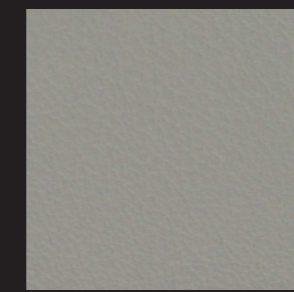
col. 1643



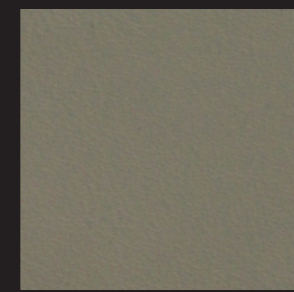
col. 1105



col. 1633



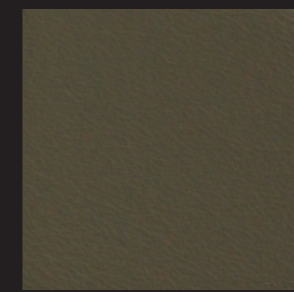
col. 1649



col. 1135



col. 1159



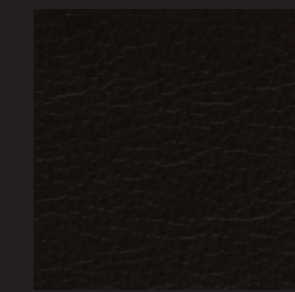
col. 1626



col. 1627



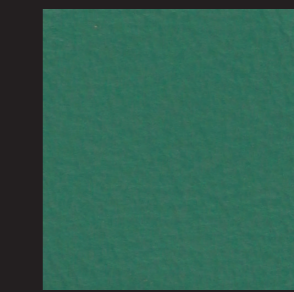
col. 1140



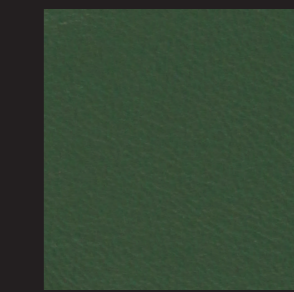
col. 1187



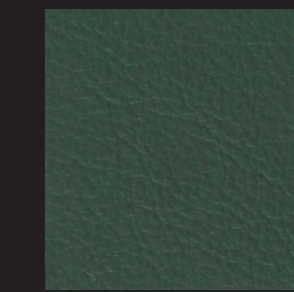
col. 1147



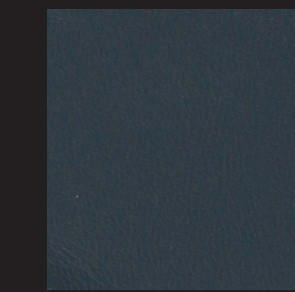
col. 1658



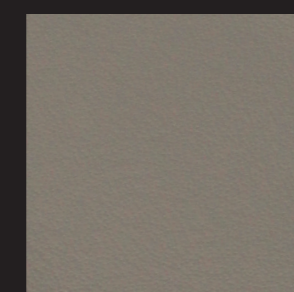
col. 1127



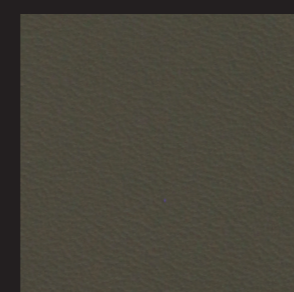
col. 1653



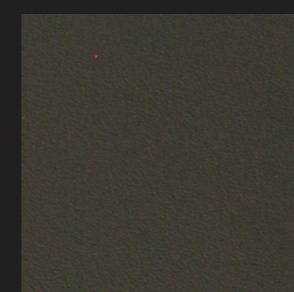
col. 1154



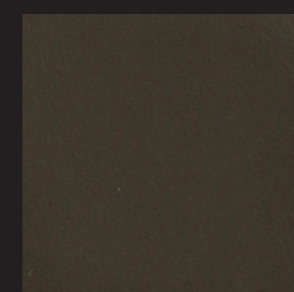
col. 1648



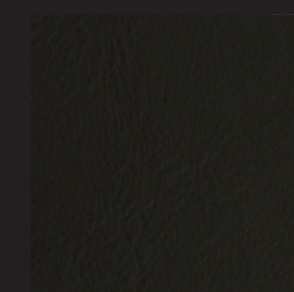
col. 1133



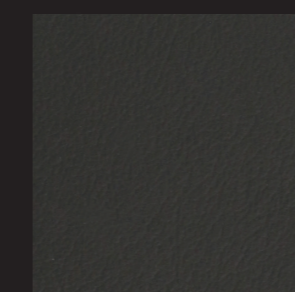
col. 1660



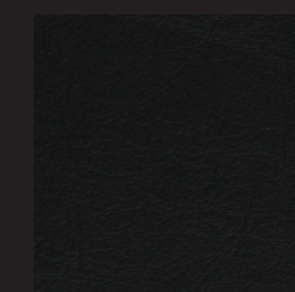
col. 1661



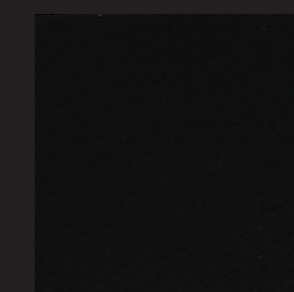
col. 1216



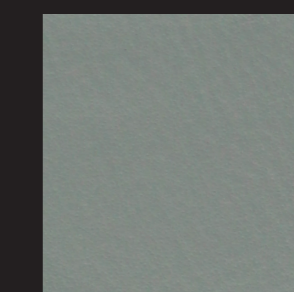
col. 1112



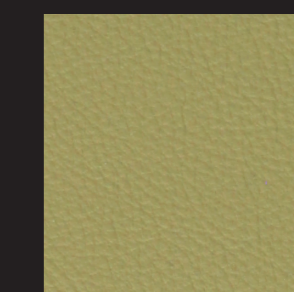
col. 1141



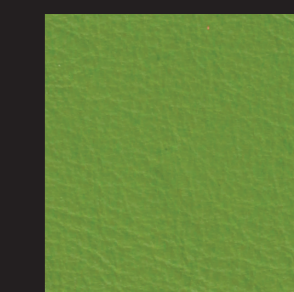
col. 1101



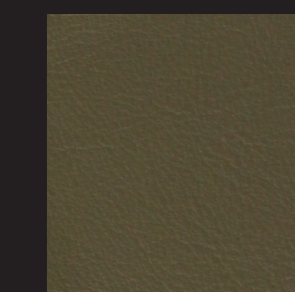
col. 1659



col. 1631



col. 1621



col. 1632

Pelli vitellone fiore provenienza Europea, conciate con cromo, tinte in botte all'anilina, grana naturale, asciugate all'aria, rifinite con resine acriliche, fissate con poliuretani in dispersione acquosa.
Misura media m² 4,22/4,5 - Spessore mm. 0,9/1,1

Full-grain European ox or heifer calf, chrome tanned, aniline-dyed in drums, natural-grain, air dried, finished with acrylic resins, fixed with polyurethane in wather dispersion.
Average size: 4,2/4,5 m² - Thickness: 0,9/1,1 mm

Peaux de veau fleur en provenance Europe, tannées au chrome, teintées en tonneau à l'aniline, grain naturel, séchées à l'air, finies avec de résines acryliques, fixées par polyuréthane en dispersion aqueuse.
Dimension moyenne: 4,2/4,5 m² - Épaisseur: 0,9/1,1 mm

“LIZARD” STAMPED LEATHERS

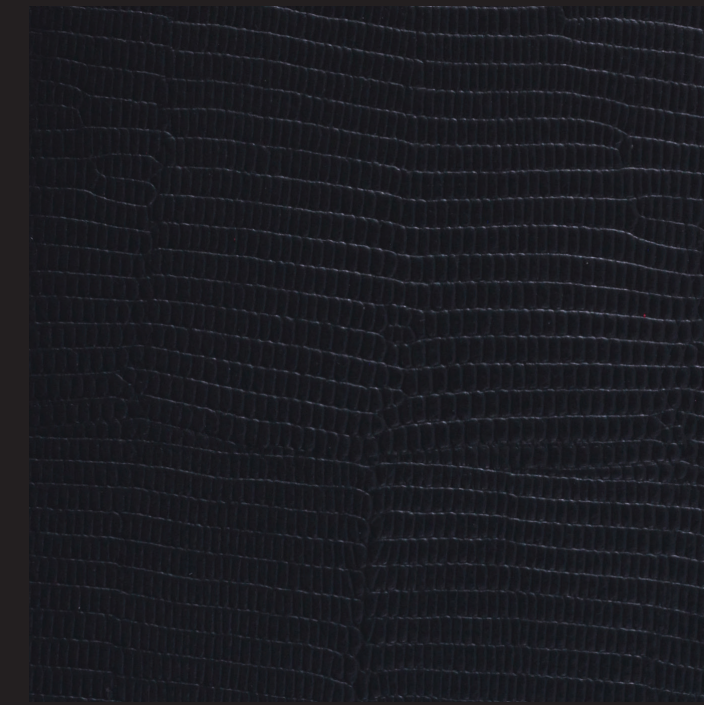


giorgio collection

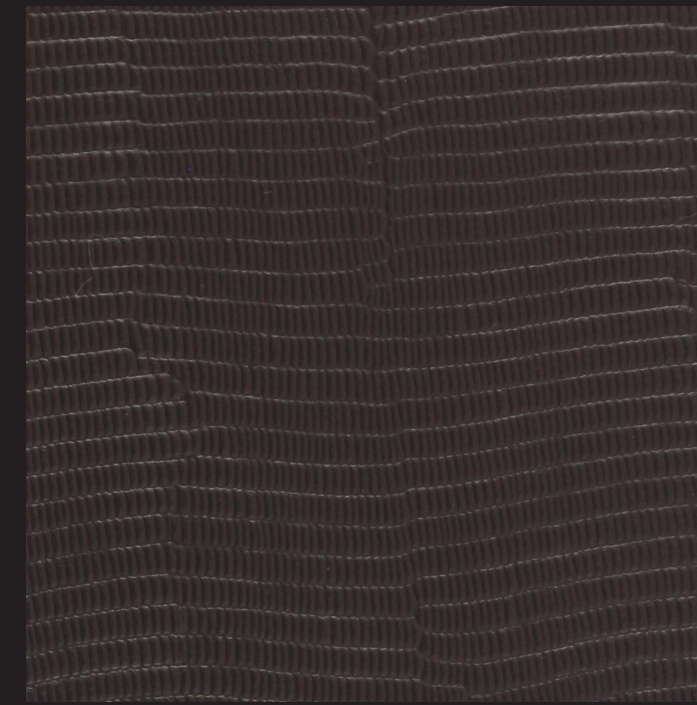
LUXURY EXPERIENCE
MADE IN ITALY



COL. # 5 IVORY



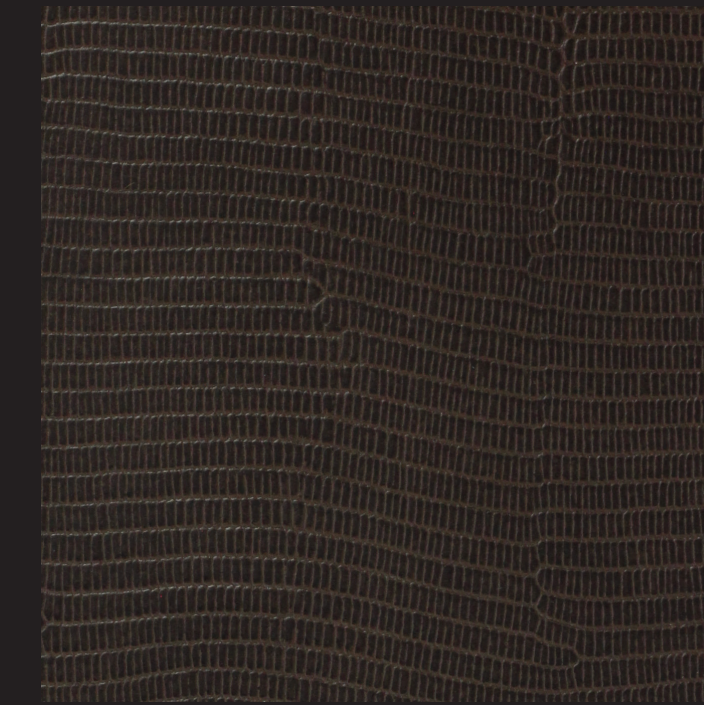
COLOUR # 8 BLACK



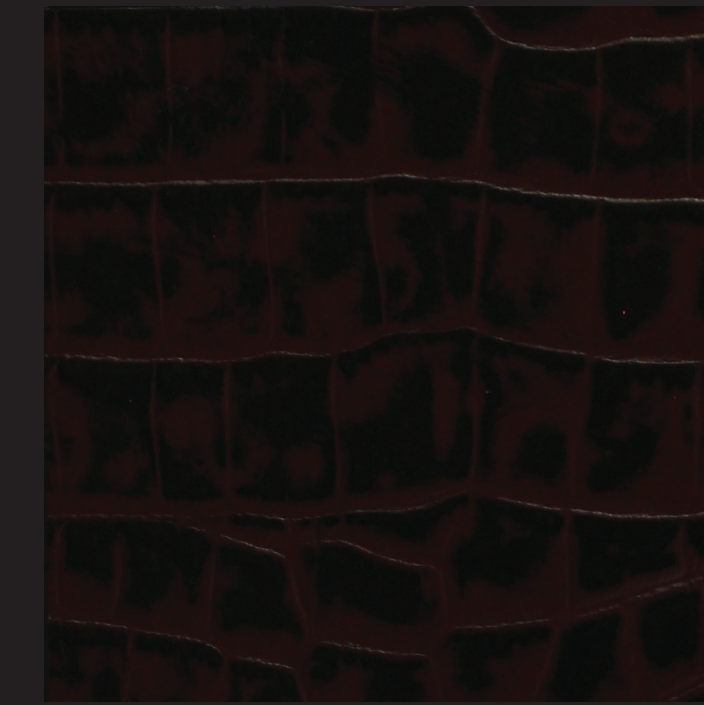
COLOUR # 3 DARK BROWN



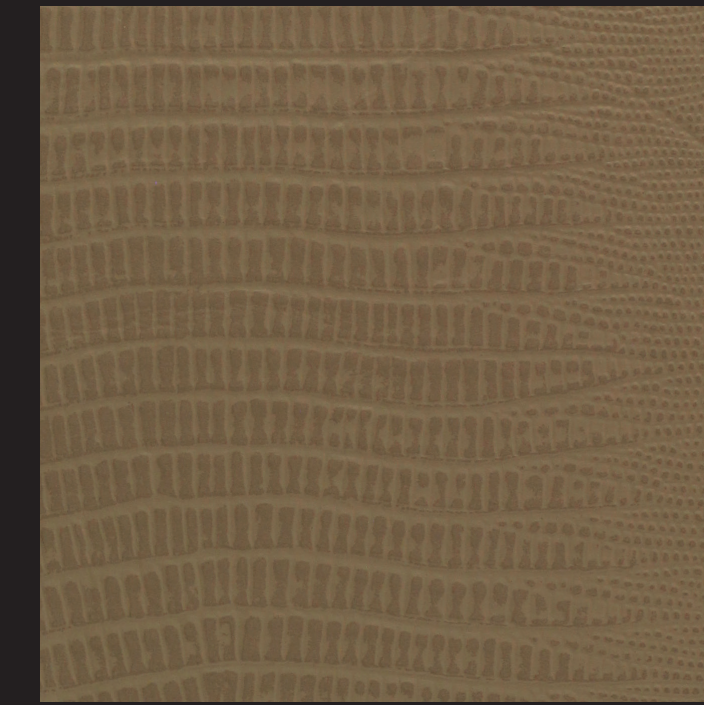
COLOUR # 12 WHITE



COLOUR # 9 LIGHT BROWN



COLOUR # BROWN CROCODILE

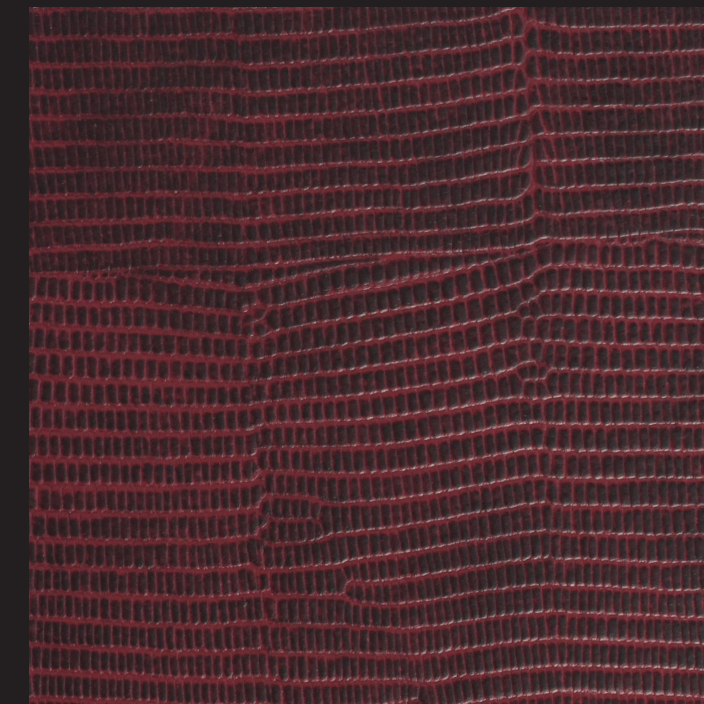


COLOUR # BEIGE IGUANA

Pelli di toro provenienza Europea, conciate con cromo, tinte in botte all'anilina, grana naturale, asciugate all'aria, rifinite con resine acriliche, fissate con poliuretani in dispersione acquosa. Misura media m² 4,22/4,5 - Spessore mm. 1,8

Full-grain European bull chrome tanned, aniline-dyed in drums, natural-grain, air dried, finished with acrylic resins, fixed with polyurethane in wather dispersion. Average size: 4,2/4,5 m² - Thickness: 1,8 mm

Peaux de taureau en provenance Europe, tannées au chrome, teintées en tonneau à l'aniline, grain naturel, séchées à l'air, finies avec de résines acryliques, fixées par polyuréthane en dispersion aqueuse. Dimension moyenne: 4,2/4,5 m² - Épaisseur: 1,8 mm



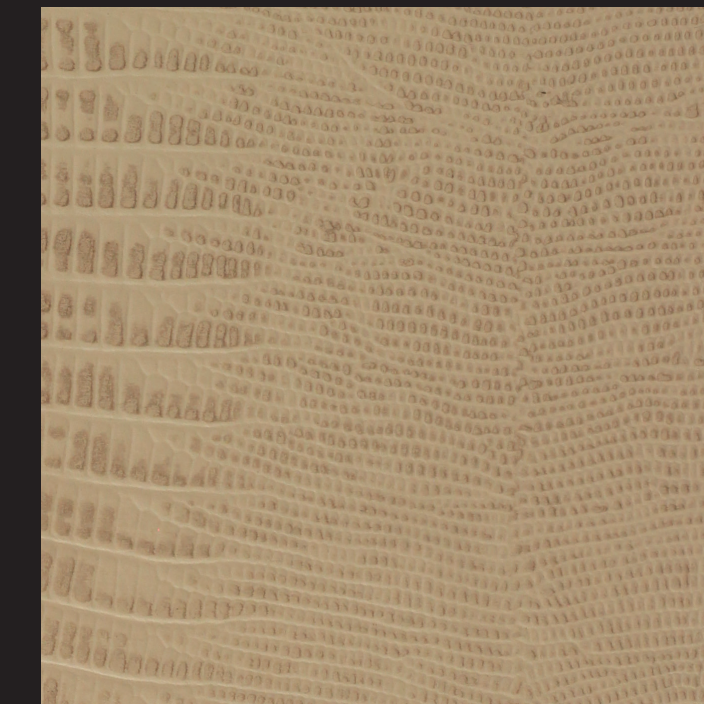
COLOUR # 1 BURGUNDY



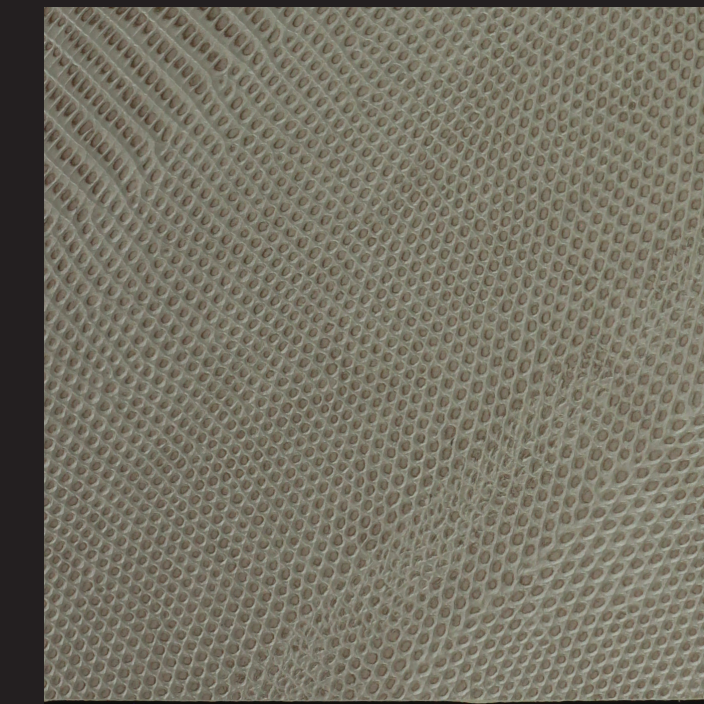
COLOUR # 11 GREY



COLOUR # 13 YELLOW



COLOUR # ARMADILLO PRINTED LEATHER



COLOUR # SILVER PEARL

“SHAI”
VELVET



giorgio collection
LUXURY EXPERIENCE
MADE IN ITALY



COLOUR # 05 PUTTY

COMPOSIZIONE	:	100% POLIESTERE
<i>composition</i>	:	<i>100% polyester</i>
ALTEZZA MINIMA GARANTITA	:	cm 144
<i>minimum guaranteed width</i>	:	<i>cm 144</i>
RIPETIZIONE VERTICALE	:	0,0
<i>vertical repetition</i>	:	<i>0,0</i>
RIPETIZIONE ORIZZONTALE	:	0,0
<i>horizontal repetition</i>	:	<i>0,0</i>
PESO	:	370 ± 5% g/m
<i>weight</i>	:	<i>370 ± 5% g/m</i>
RES. ALL'ABRASIONE	:	40.000 (giri)
<i>abrasion resistance test EN ISO 12947-2 (Martindale)</i>	:	<i>40.000 (turns)</i>

IMPORTANTE: Non usare detersivi che contengono ossidanti o candeggianti ottici
 IMPORTANT: Do not use detergents containing oxidands or optical bleaches



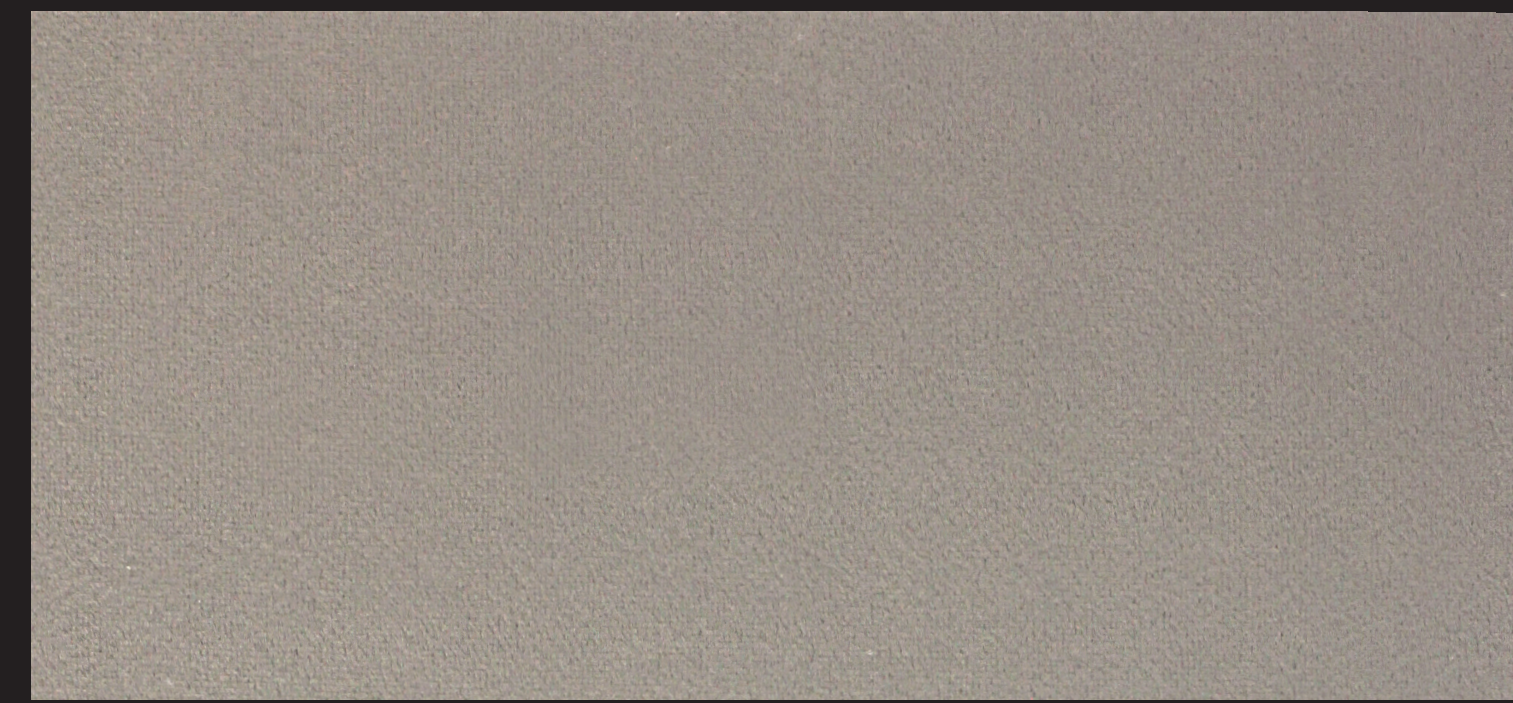
COLOUR # 03 GRAPHITE



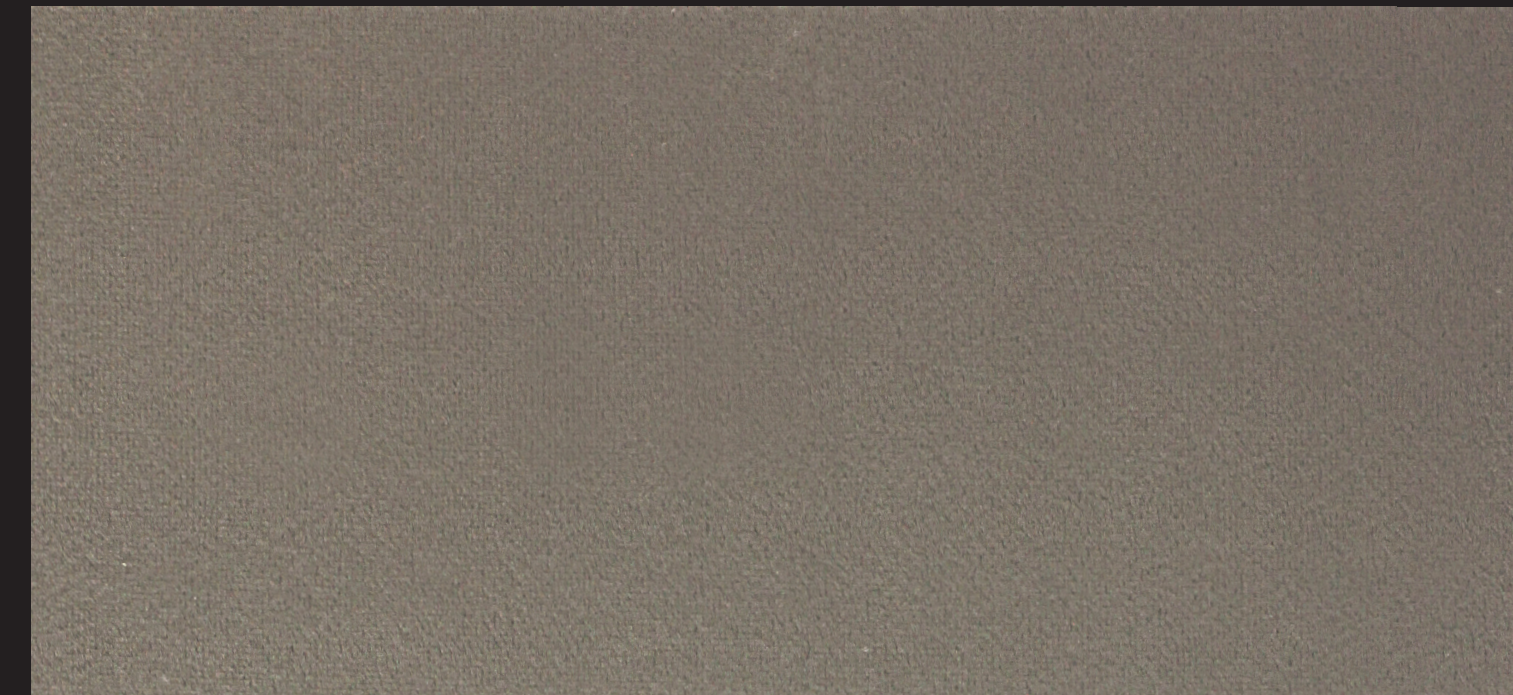
COLOUR # 07 MERCURY



COLOUR # 06 SILVER GREY



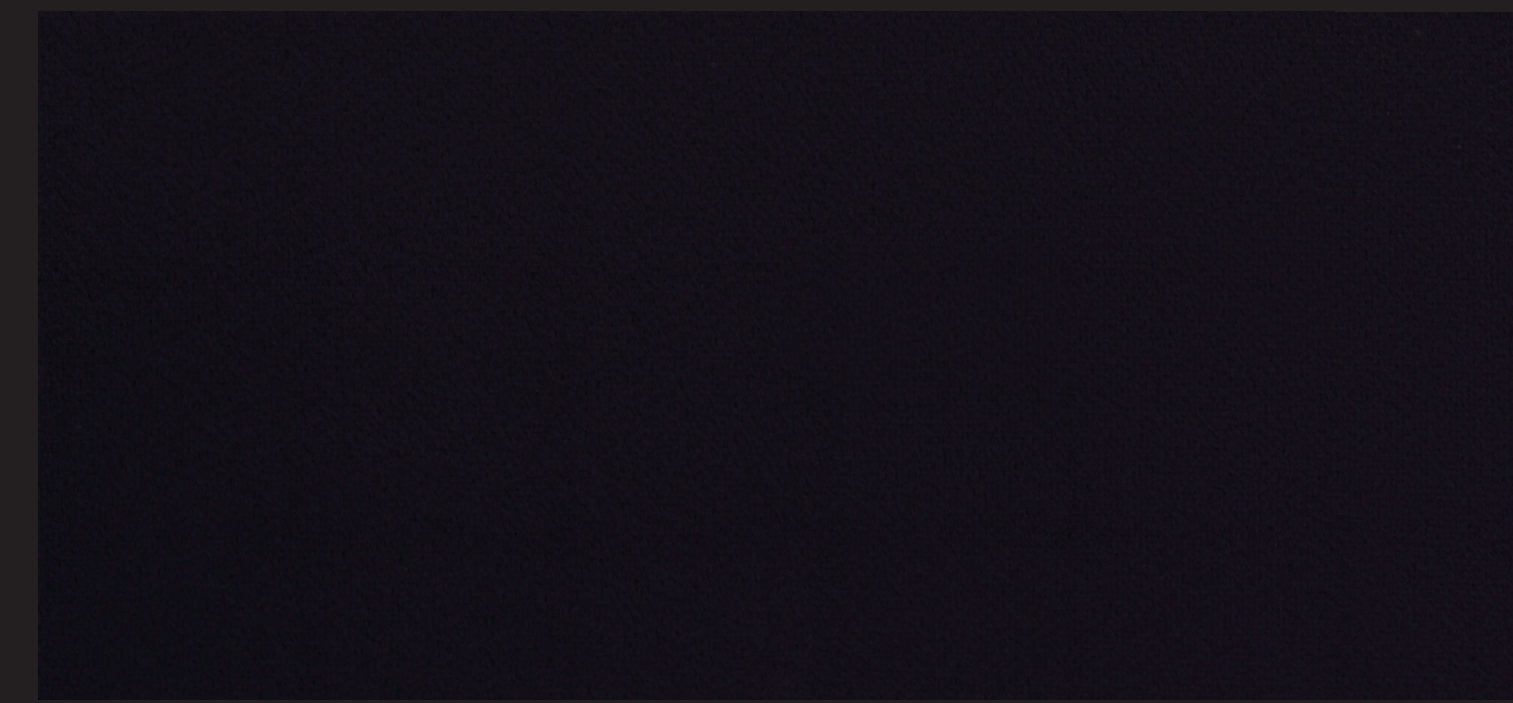
COLOUR # 01 FROST



COLOUR # 02 SPACE DUST



COLOUR # 04 TAUPE



COLOUR # 08 CHAROLITE

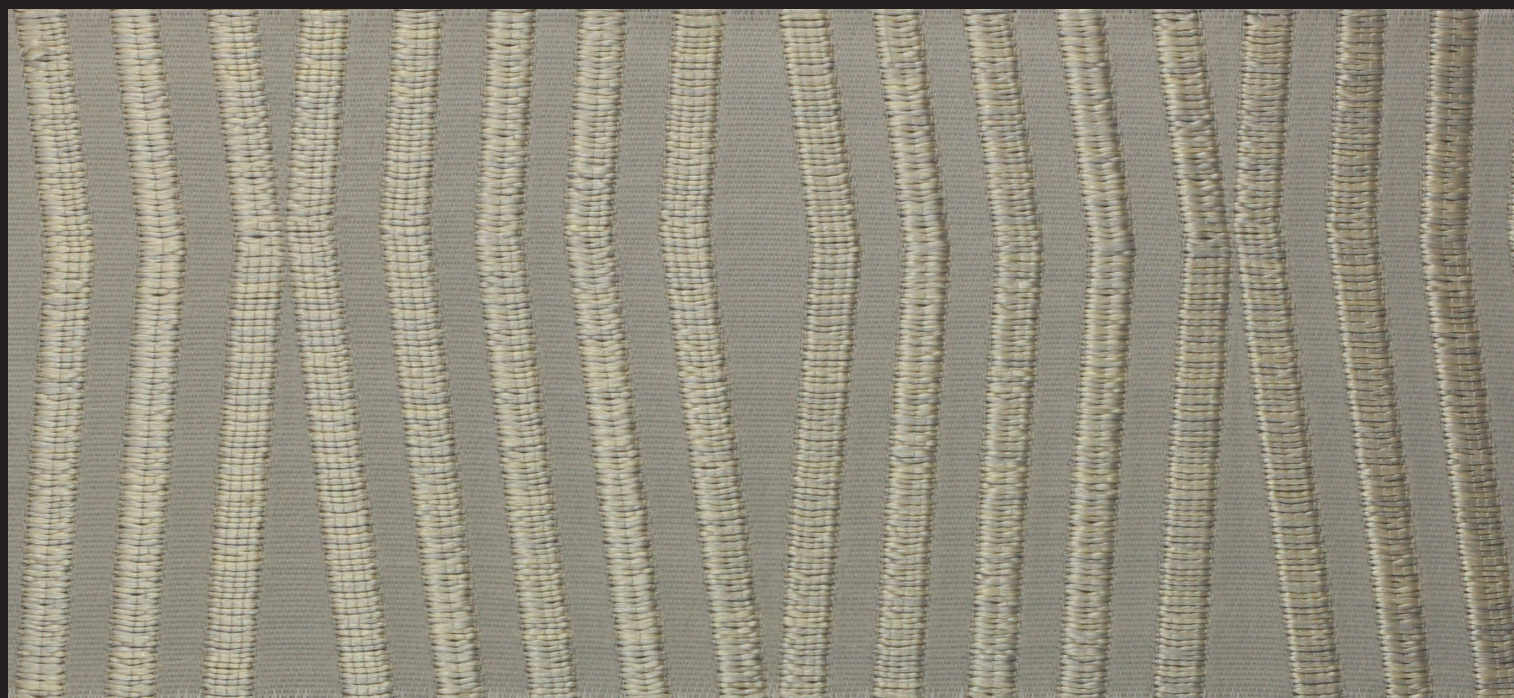
“SNAP”

FABRIC

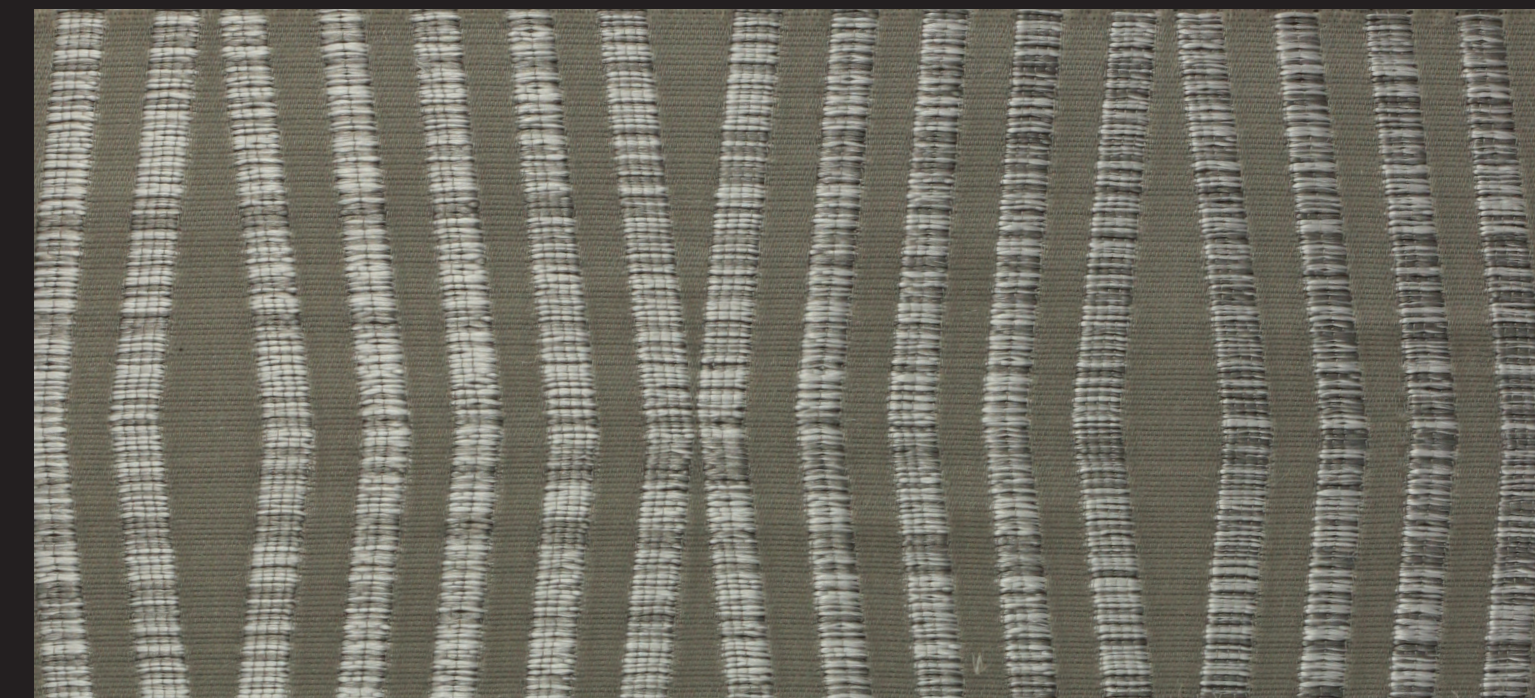


giorgio collection

LUXURY EXPERIENCE
MADE IN ITALY



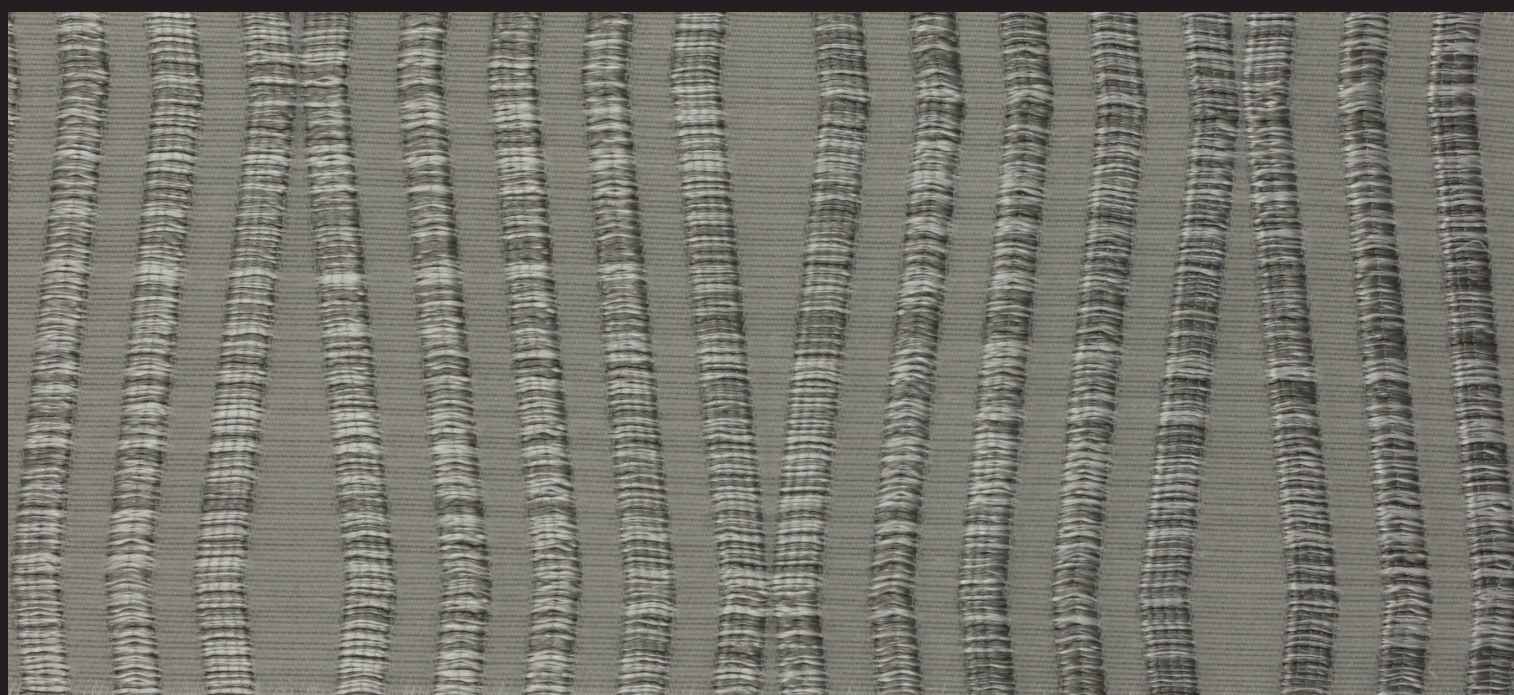
COLOUR # 01 MOONBEAM



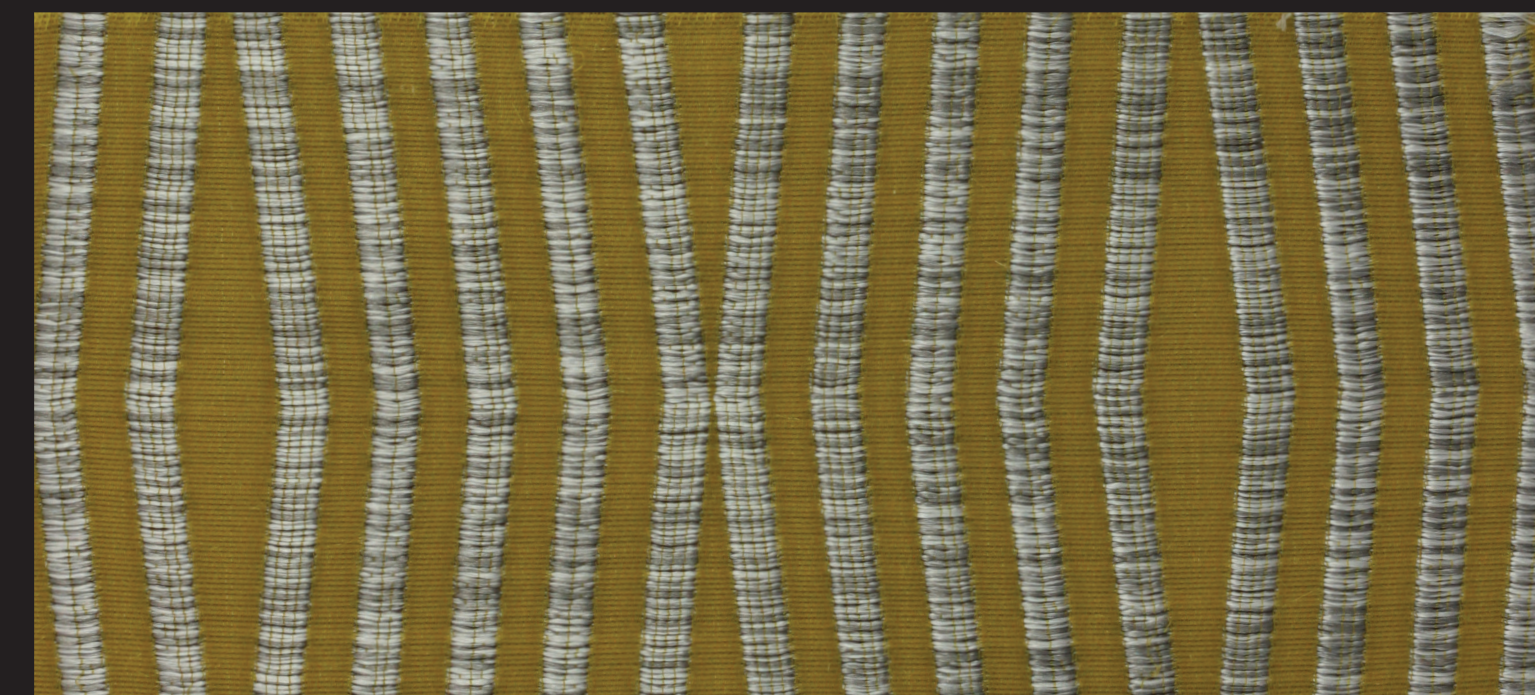
COLOUR # 03 MERCURY



COLOUR # 04 TRUFFLE

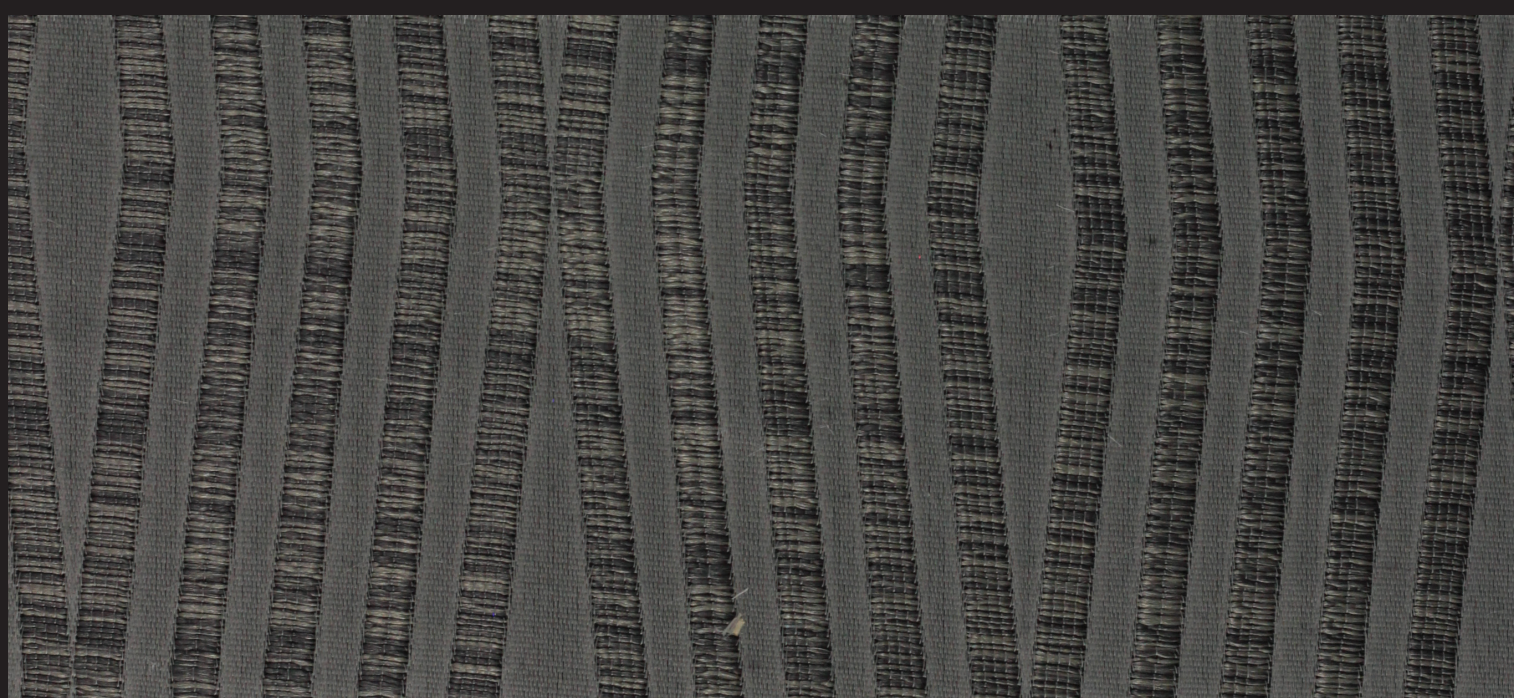


COLOUR # 02 SILVER GREY



COLOUR # 06 CHARTREUSE

COMPOSIZIONE	:	100% POLIESTERE - 20% NYLON - 5% ACRILICO
<i>composition</i>	:	<i>100% polyester - 20% nylon - 5% acrylic</i>
ALTEZZA MINIMA GARANTITA	:	cm 146
<i>minimum guaranteed width</i>	:	<i>cm 146</i>
RIPETIZIONE VERTICALE	:	13,0
<i>vertical repetition</i>	:	<i>13,0</i>
RIPETIZIONE ORIZZONTALE	:	12,0
<i>horizontal repetition</i>	:	<i>12,0</i>
PESO	:	505 ± 5% g/m
<i>weight</i>	:	<i>505 ± 5% g/m</i>
ORDITO	:	nylon dtex 78
<i>warp</i>	:	<i>nylon dtex 78</i>
TRAMA	:	pes 1900 dtex, co 24/2 ^{ne}
<i>weft</i>	:	<i>pes 1900 dtex, co 24/2^{ne}</i>
RES. ALL'ABRASIONE	:	20.000 (giri)
<i>abrasion resistance test EN ISO 12947-2 (Martindale)</i>	:	<i>20.000 (turns)</i>



COLOUR # 05 STORM

IMPORTANTE: Non usare detersivi che contengono ossidanti o candeggianti ottici
IMPORTANT: Do not use detergents containing oxidands or optical bleaches



TAPIRO NABUK LEATHER



giorgio collection

LUXURY EXPERIENCE
MADE IN ITALY



COLOUR # 21 GREY

Pelli vitellone fiore nabuccato provenienza Europa, conciate con cromo, tinte in botte all'anilina, grana naturale, asciugate all'aria, rifinite con resine acriliche, fissate con poliuretani in dispersione acquosa, resistente ai liquidi a base oleosa ed acquosa.
Misura media m² 5 - Spessore mm 1,3

Nabuk full-grain European ox or heifer calf, chrometanned, aniline-dyed in drums, natural-grain, air dried, finished with acrylic resins, fixed with poliurethane in wather dispersion.
Average size: 5 m² - Thickness: 1,3 mm

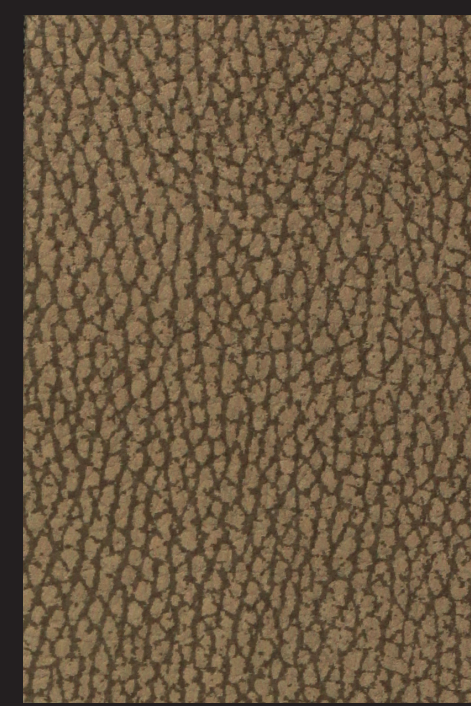
Nabuk peaux de veau fleur en provenance Europe, tannées au chrome, teintées en tonneau à l'aniline, grain naturel, séchées à l'air, finies avec de résines acryliques, fixées par polyuréthane en dispersion aqueuse.
Dimension moyenne: 5 m² - Épaisseur: 1,3 mm



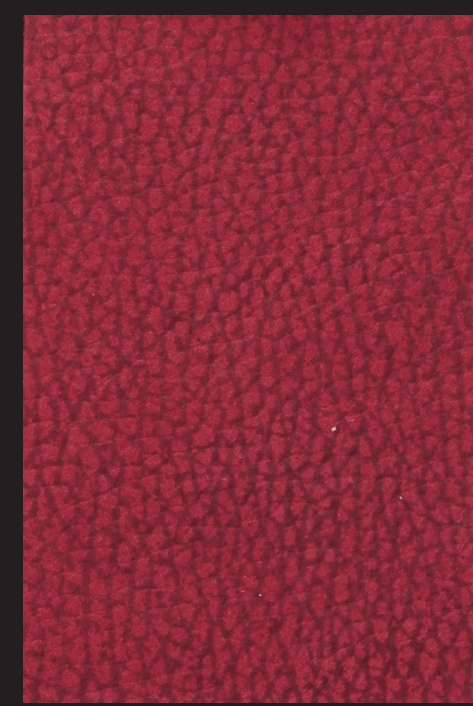
COLOUR # 20 BEIGE



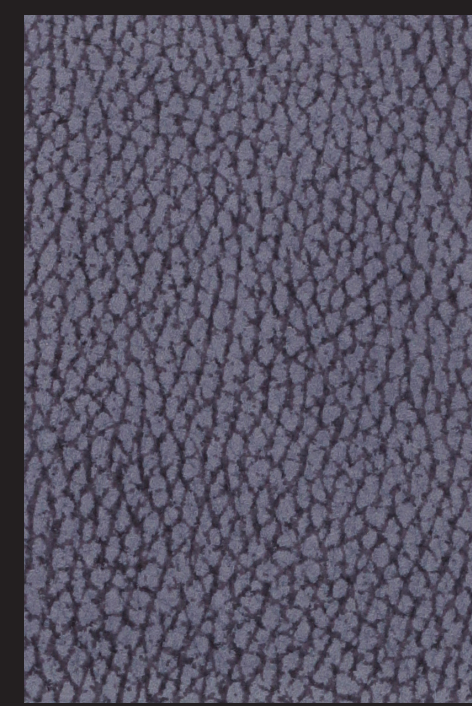
COLOUR # 27 IVORY



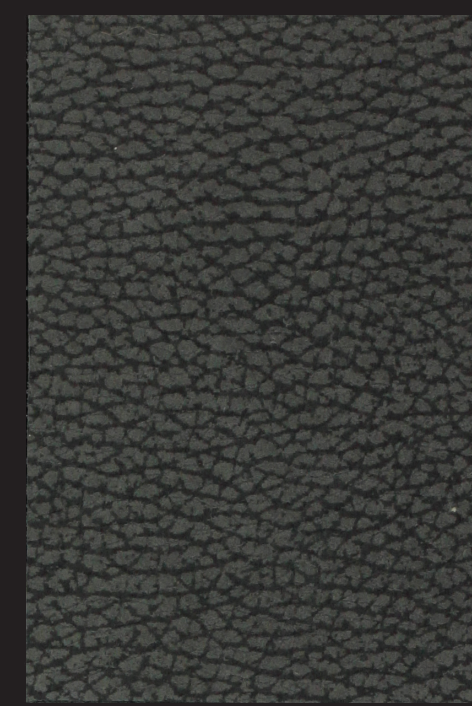
COLOUR # 10 LIGHT BROWN



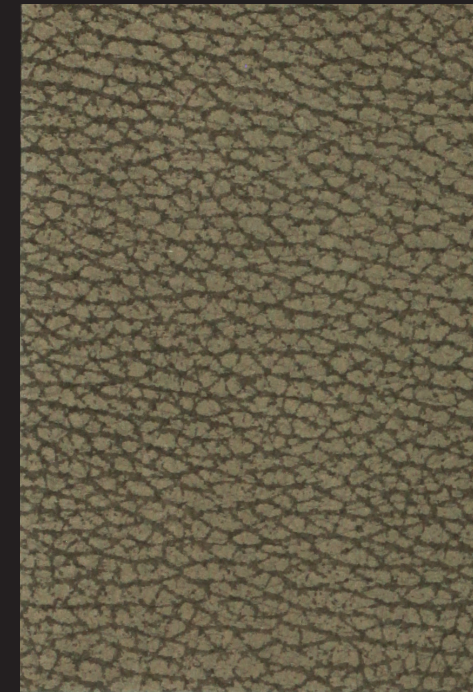
COLOUR # 32 RED



COLOUR # 23 LAVANDER



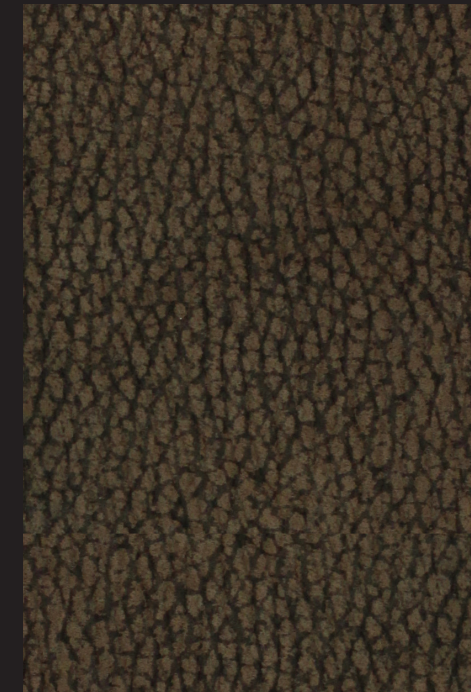
COLOUR # 24 SLATE GREY



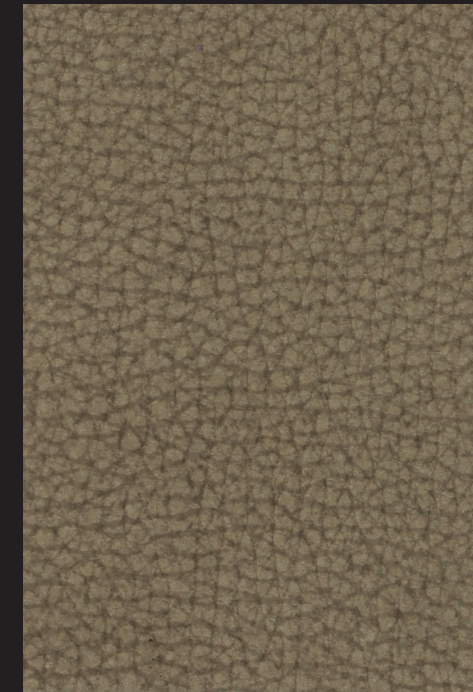
COLOUR # 28 ANTYLOP



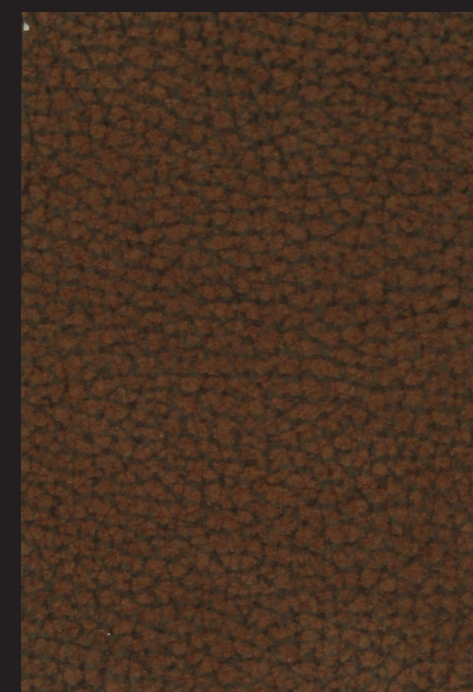
COLOUR # 25 BROWN



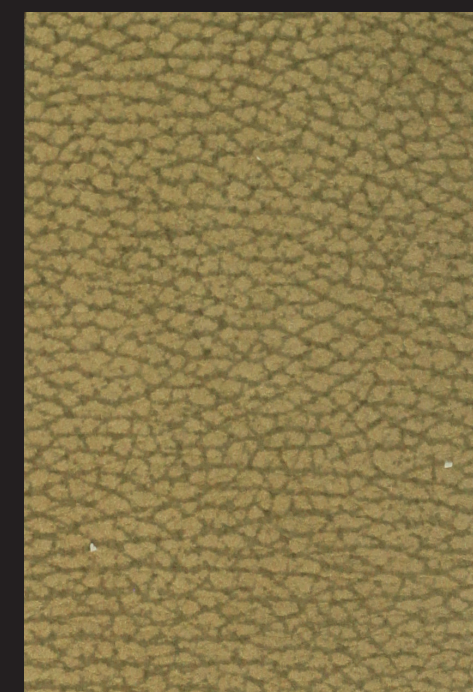
COLOUR # 35 CIOCCO



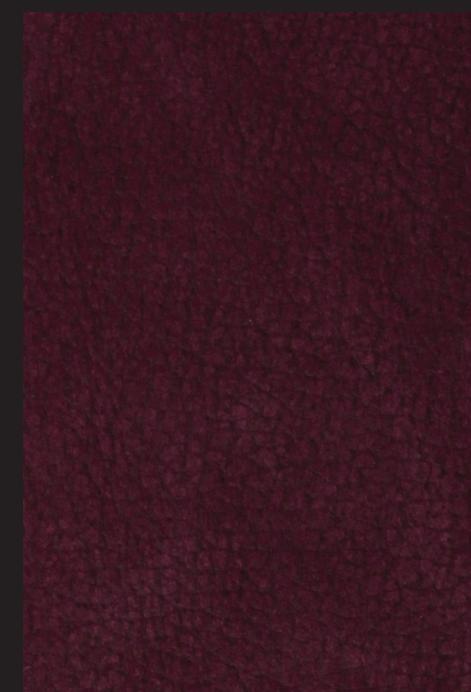
COLOUR # 33 AVANA



COLOUR # 34 AMBER



COLOUR # 22 APPLE GREEN



COLOUR # 29 VIOLET

CARATTERISTICHE DELLA PELLE

ORIGINE PELLE : TORI EUROPEI
ORIGIN : EUROPEAN BULLS
CONCIA : AL CROMO
TANNING : AT CHROME
TINTURA : COLORANTI ACIDI E PREMETALLIZZATI
DYE : PREMETALLIZED AND ACID DYES

SPECIFICHE DETAILED LIST	TEST INTERNI INTERNAL TEST	VALORE LIMITE MAXIMUM VALUE	METODO METHOD
Resistenza allo strappo Tear strenght	> 5 Kg/mm	> 4 Kg/mm	UNI 3377
Solidità alla luce Light resistance	> 3	> 3	UNI 3377

RESISTENTE AI LIQUIDI A BASE OLEOSA E ACQUOSA. TESTATO 3M SCOTCHGARD
RESISTANT TO OIL AND WATER SPILLS. TESTED FOR 3M SCOTCHGARD



Certificazioni: BS5852 source 0, 1

Le nostre pelli sono idrorepellenti e il nostro trattamento ne protegge il manto. Con una semplice spugna umida lo sporco viene rimosso facilmente. Abbiamo anche kit di pulizia ad hoc in caso di macchie più difficili da rimuovere.

Origine pelle: Tori europei
Concia: Al cromo
Tintura: Coloranti acidi e premetallizzati
Rifinitone: Resistente ai liquidi a base oleosa e acquosa

Specifiche	Valore	Metodo
Solidità del colore:	> 3	UNI 9427
Resistenza allo strappo:	> 5 kg/mm	UNI 3377

Certifications: BS5852 source 0, 1

Our leathers are water repellent and our treatment protects the hide. Dirt is easily removed with a wet sponge. We also have a cleaning kit in case of tough stains.

Origin: European bulls
Tanning: Chrome tanning
Dyeing: Premetallized and acid dyes
Finishing: Resistant to oil and water spills

Specifics:	Value	Method
Colour fastness to artificial light:	> 3	UNI 9427
Tear resistance:	> 5 kg/mm	UNI 3377

TYGER NABUK LEATHER



COLOUR # 18 CAPPUCCINO

Pelli vitellone fiore nabuccato provenienza Europa, conciate con cromo, tinte in botte all'anilina, grana naturale, asciugate all'aria, rifinite con resine acriliche, fissate con poliuretani in dispersione acquosa, resistente ai liquidi a base oleosa ed acquosa.
Misura media m² 5 - Spessore mm 1,3

Nabuk full-grain European ox or heifer calf, chrometanned, aniline-dyed in drums, natural-grain, air dried, finished with acrylic resins, fixed with poliurethane in wather dispersion.
Average size: 5 m² - Thickness: 1,3 mm

Nabuk peaux de veau fleur en provenance Europe, tannées au chrome, teintées en tonneau à l'aniline, grain naturel, séchées à l'air, finies avec de résines acryliques, fixées par polyuréthane en dispersion aqueuse.
Dimension moyenne: 5 m² - Épaisseur: 1,3 mm



COLOUR # 1 CIOCCO



COLOUR # 2 DARK BROWN



COLOUR # 16 LIGHT BROWN



COLOUR # 17 ANTYPLOP



COLOUR # 15 AVANA



COLOUR # 7 LIGHT GREEN



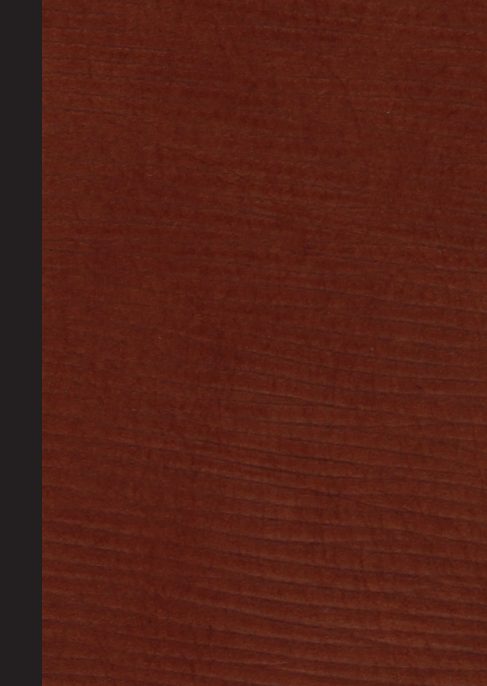
COLOUR # 23 BLUE



COLOUR # 22 YELLOW



COLOUR # 21 RED



COLOUR # 19 AMBER



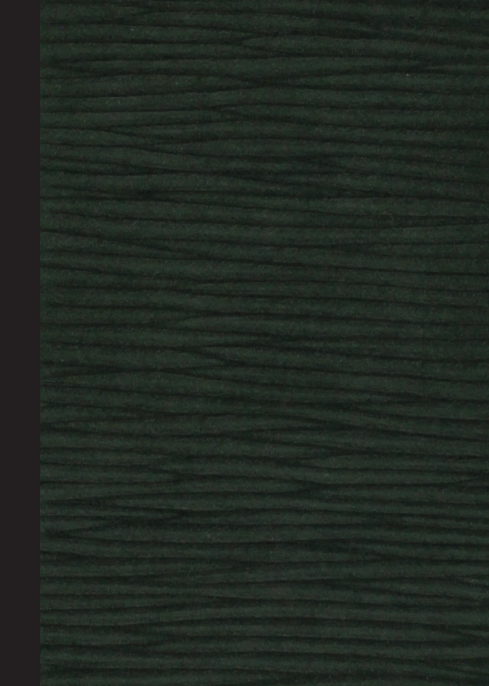
COLOUR # 6 STONE



COLOUR # 14 SMOKE



COLOUR # 8 MEDIUM GREEN



COLOUR # 24 DARK GREEN



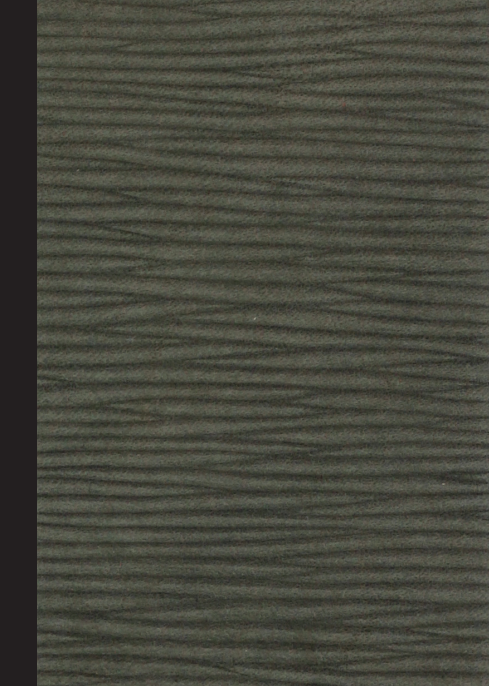
COLOUR # 20 APPLE GREEN



COLOUR # 12 GREY



COLOUR # 13 BLACK



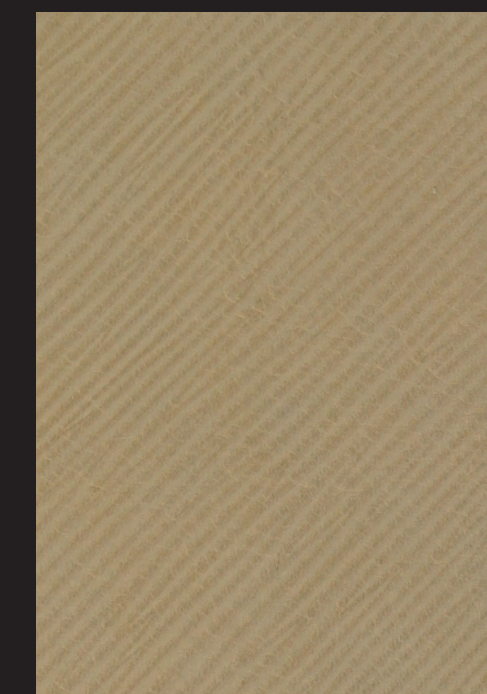
COLOUR # 37 FOREST GREEN



COLOUR # 5 BEIGE



COLOUR # 4 PEARL



COLOUR # 3 IVORY



COLOUR # 9 PINK



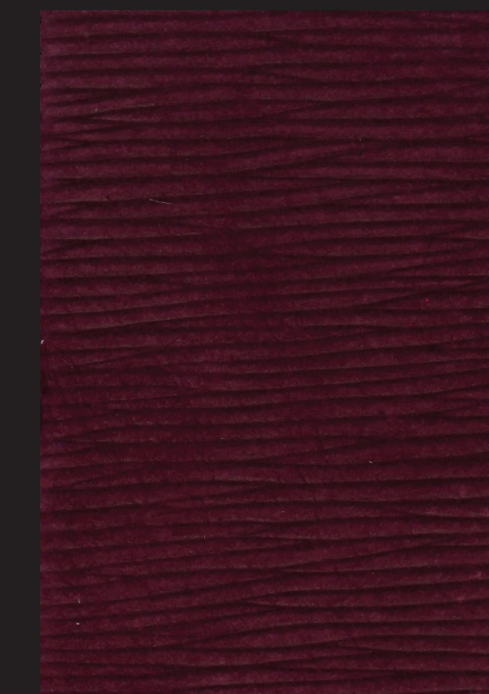
COLOUR # 10 VIOLET



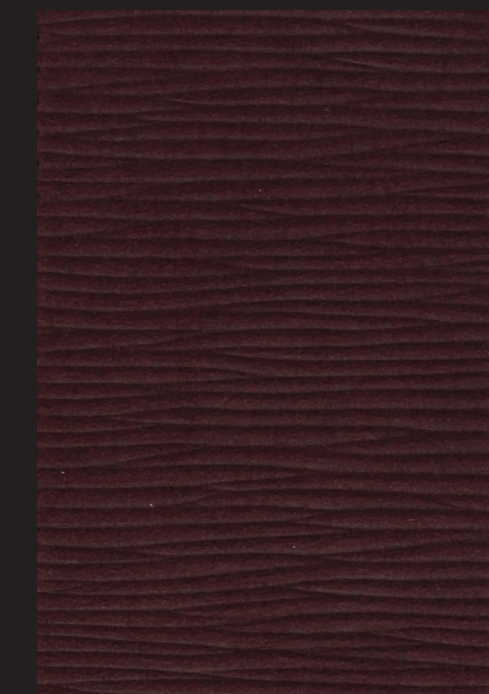
COLOUR # 11 LAVANDER



COLOUR # 34 CHERRY



COLOUR # 33 AMARANTH



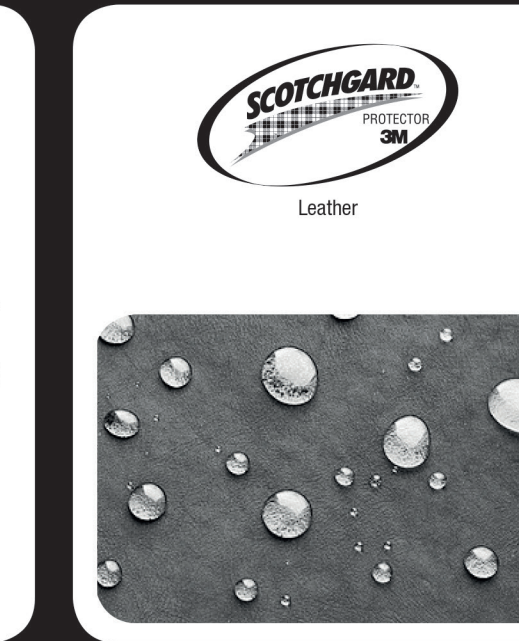
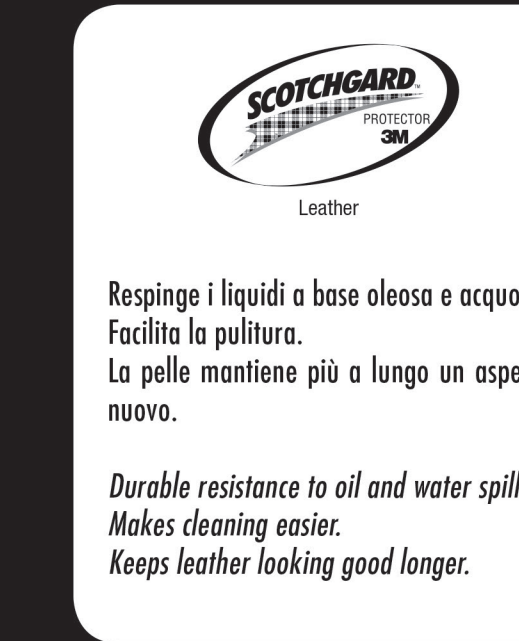
COLOUR # 35 PLUM

CARATTERISTICHE DELLA PELLE

ORIGINE PELLE : TORI EUROPEI
ORIGIN : EUROPEAN BULLS
CONCIA : AL CROMO
TANNING : AT CHROME
TINTURA : COLORANTI ACIDI E PREMETALLIZZATI
DYE : PREMETALLIZED AND ACID DYES

SPECIFICHE DETAILED LIST	TEST INTERNI INTERNAL TEST	VALORE LIMITE MAXIMUM VALUE	METODO METHOD
Resistenza allo strappo Tear strenght	> 5 Kg/mm	> 4 Kg/mm	UNI 3377
Solidità alla luce Light resistance	> 3	> 3	UNI 3377

RESISTENTE AI LIQUIDI A BASE OLEOSA E ACQUOSA. TESTATO 3M SCOTCHGARD
RESISTANT TO OIL AND WATER SPILLS. TESTED FOR 3M SCOTCHGARD



www.giorgiocollection.it

Certificazioni: BS5852 source 0, 1

Le nostre pelli sono idrorepellenti e il nostro trattamento ne protegge il manto. Con una semplice spugna umida lo sporco viene rimosso facilmente. Abbiamo anche kit di pulizia ad hoc in caso di macchie più difficili da rimuovere.

Origine pelle: Tori europei
Concia: Al cromo
Tintura: Coloranti acidi e premetallizzati
Rifinitone: Resistente ai liquidi a base oleosa e acquosa

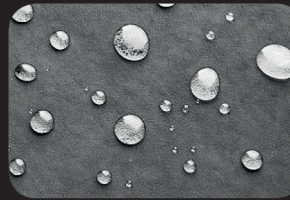
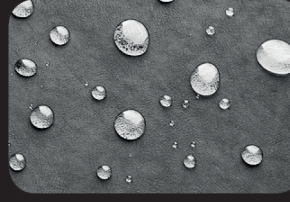
Specifiche	Valore	Metodo
Solidità del colore:	> 3	UNI 9427
Resistenza allo strappo:	> 5 kg/mm	UNI 3377

Certifications: BS5852 source 0, 1

Our leathers are water repellent and our treatment protects the hide. Dirt is easily removed with a wet sponge. We also have a cleaning kit in case of though stains.

Origin: European bulls
Tanning: Chrome tanning
Dyeing: Premetallized and acid dyes
Finishing: Resistant to oil and water spills

Specifics:	Value	Method
Colour fastness to artificial light:	> 3	UNI 9427
Tear resistance:	> 5 kg/mm	UNI 3377





COLOUR # 12 GREYSTONE

COMPOSIZIONE : 55% VI - 45% CO
composition : 55% VI - 45% CO
 ALTEZZA MINIMA GARANTITA : cm 140
minimum guaranteed width : cm 140
 PESO : 780 gr. ml.
weight : 780 gr. ml.
 VARIAZIONI DIMENSIONALI AI LAVAGGI :
dimensional stability :
 LAVAGGIO A MANO 30° : ISO 7771 O/T +/-1
hand wash 30° : ISO 7771 O/T +/-1
 LAVAGGIO A SECCO : ISO 3175 O +/-1
dry cleaning : ISO 3175 O +/-1
 SOLIDITÀ DEL COLORE :
color fastness :
 SOLIDITÀ COLORI ALLA LUCE (XENOTEST) : ISO 105 B02 5
color fastness : ISO 105 B02 5
 RESISTENZA ALLA FORMAZIONE DI PEELING : ISO 12945 PT 2 4
pilling test ISO 1245-2 (martindale) : ISO 12945 PT 2 4

IMPORTANTE: Non usare detersivi che contengono ossidanti o candeggianti ottici
 IMPORTANT: Do not use detergents containing oxidants or optical bleaches



COLOUR # 04
WHITE



COLOUR # 06
LIGHT GREY



COLOUR # 01
SAND



COLOUR # 03
RED



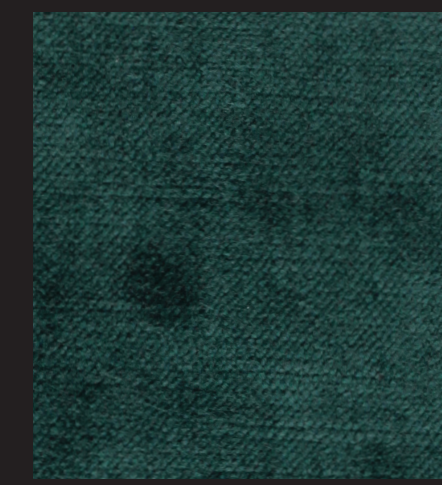
COLOUR # 36
DARK ORCHID



COLOUR # 37
PURPLE



COLOUR # 34
STEEL BLUE



COLOUR # 59
OTTANO



COLOUR # 14
INDACO



COLOUR # 10
IVORY



COLOUR # 11
BEIGE



COLOUR # 05
CIPRIA



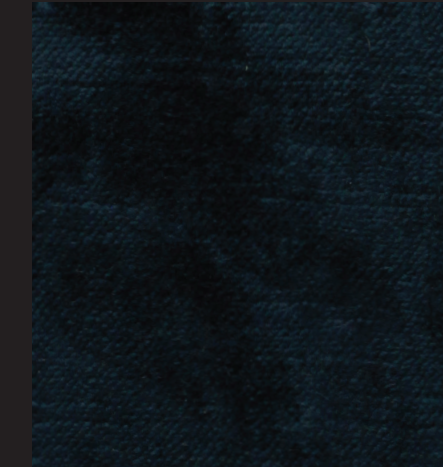
COLOUR # 02
GOLD



COLOUR # 46
ANTIQUÉ GOLD



COLOUR # 67
GREEN YELLOW



COLOUR # 51
BLUE



COLOUR # 44
SLATE GREY



COLOUR # 52
SALMON



COLOUR # 20
MISTY ROSE



COLOUR # 38
ANTIQUÉ ROSE



COLOUR # 16
STEEL



COLOUR # 68
DARK GREEN



COLOUR # 39
BROWN



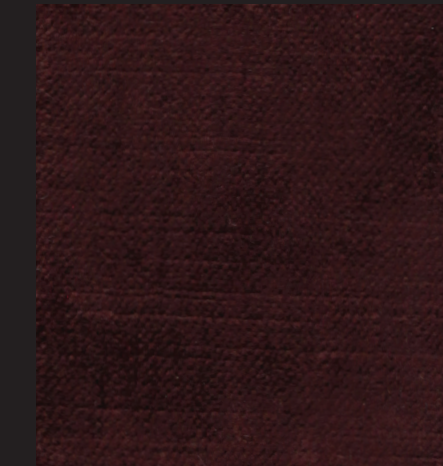
COLOUR # 45
BURLY WOOD



COLOUR # 54
PEACH



COLOUR # 58
PLUM



COLOUR # 55
WINE



COLOUR # 13
ACQUA



COLOUR # 15
PINK



COLOUR # 63
CORAL



COLOUR # 32
CRIMSON



COLOUR # 33
PALE GREEN



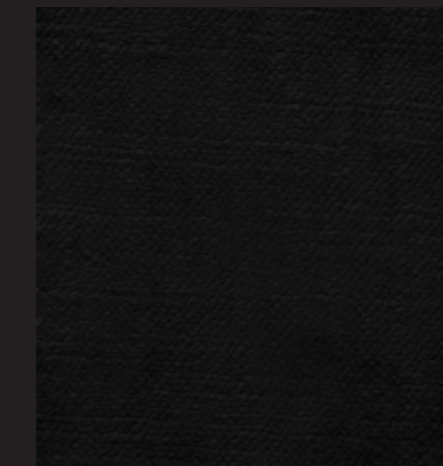
COLOUR # 35
TURQUOISE



COLOUR # 61
MINT



COLOUR # 50
SKY BLUE



COLOUR # 49
BLACK

VELVETS



giorgio collection

LUXURY EXPERIENCE
MADE IN ITALY



art. 631/01 col. bianco



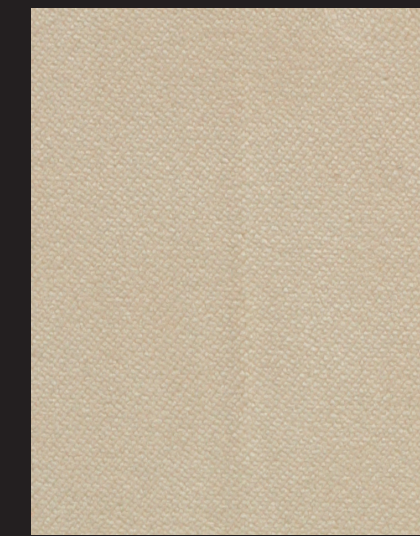
art. 631/02 col. panna



art. 631/33 col. corda



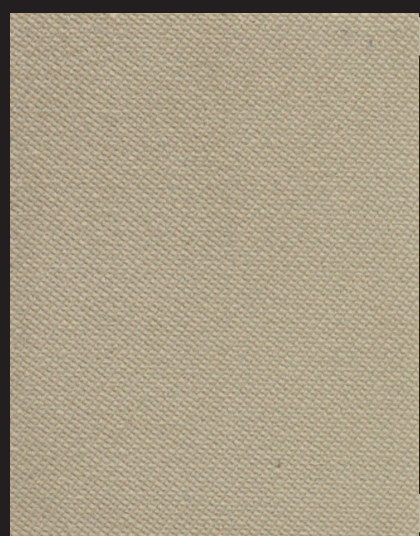
art. 631/09 col. arancio



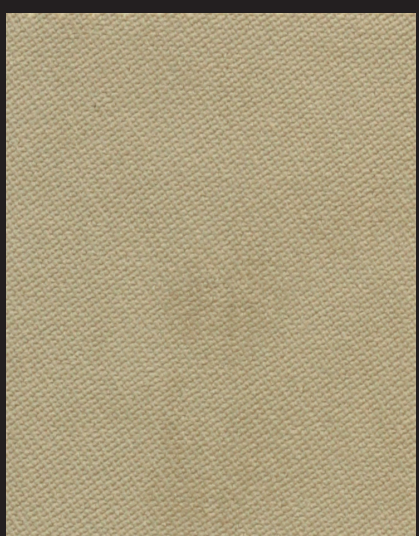
art. 631/10 col. ruggine



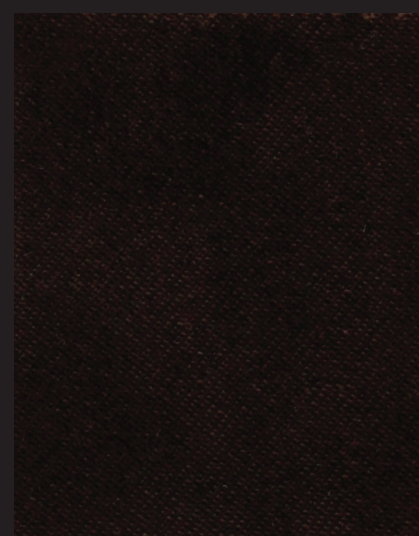
art. 631/27 col. bordeaux



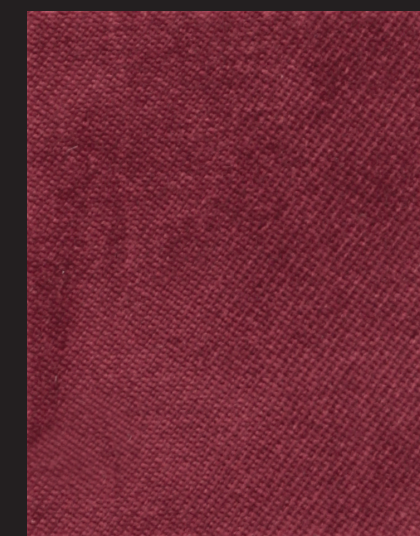
art. 631/04 col. sabbia



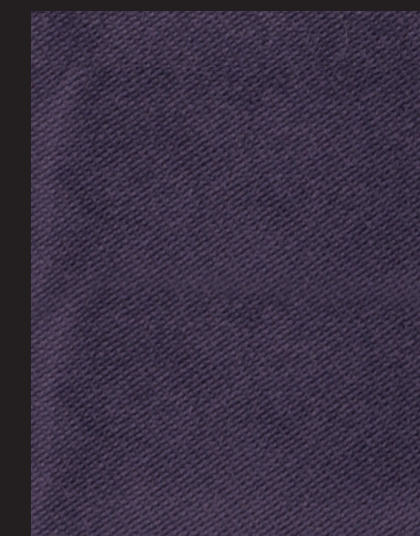
art. 631/03 col. nocciola



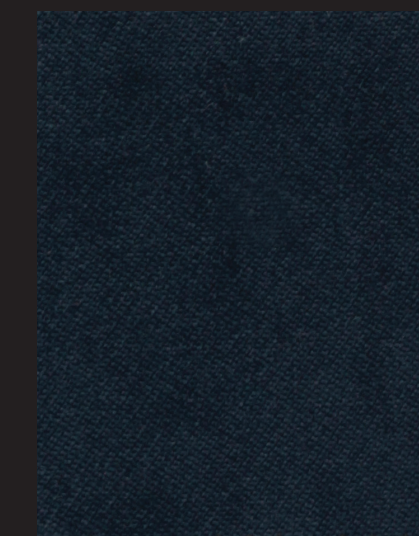
art. 631/06 col. marrone



art. 631/14 col. vinaccia



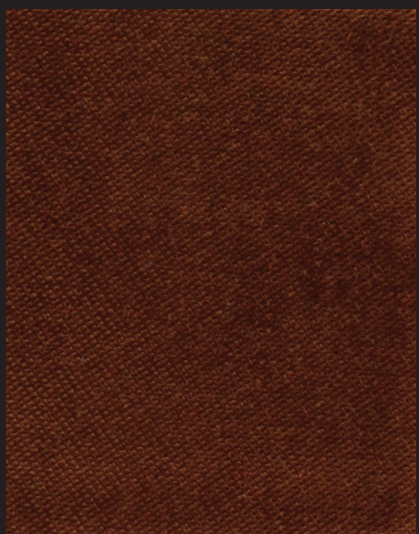
art. 631/16 col. viola



art. 631/24 col. navy



art. 631/31 col. bruciato



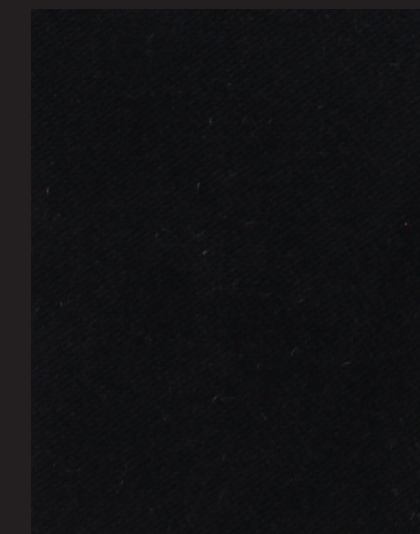
art. 631/07 col. cognac



art. 631/29 col. rosa antico



art. 631/28 col. visone



art. 631/26 col. nero

art. 631/25 col. fumo

COMP. 100% PL Peso 440 gr/ ml H. cm 140 Martindale > 30.000



IMPORTANTE - Non usare detersivi che contengono ossidanti o candeggianti ottici.
Stirare a rovescio con panno umido interposto.

COMPOSITION 100% PL Weight 440gr/ml Width cm 140 Martindale > 30.000



IMPORTANT - Do not use detergents containing oxidands or optical bleaches.

“VERSA”

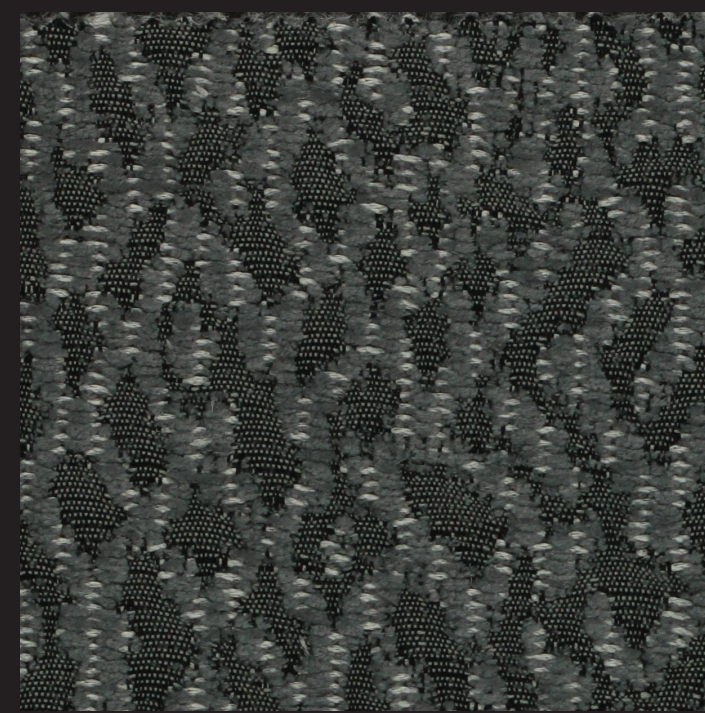


giorgio collection

LUXURY EXPERIENCE
MADE IN ITALY



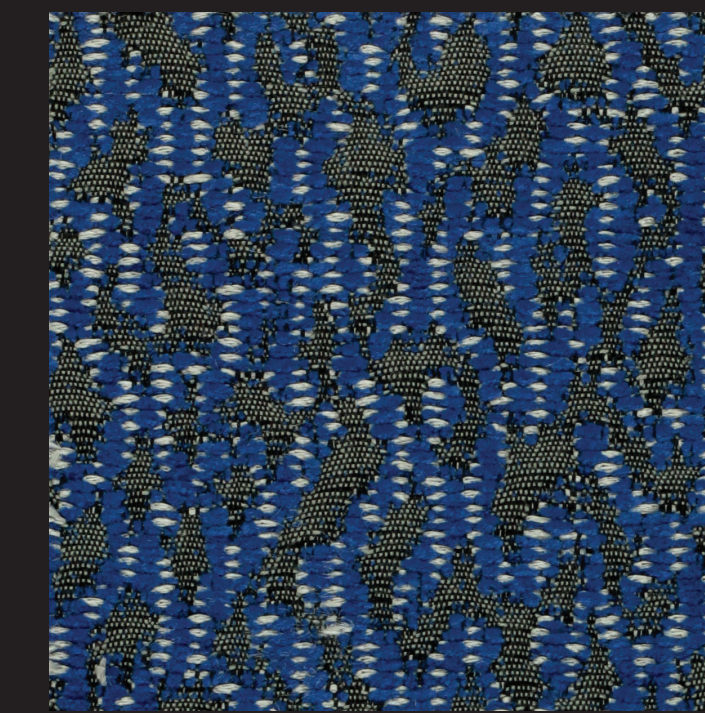
LINEN # 08



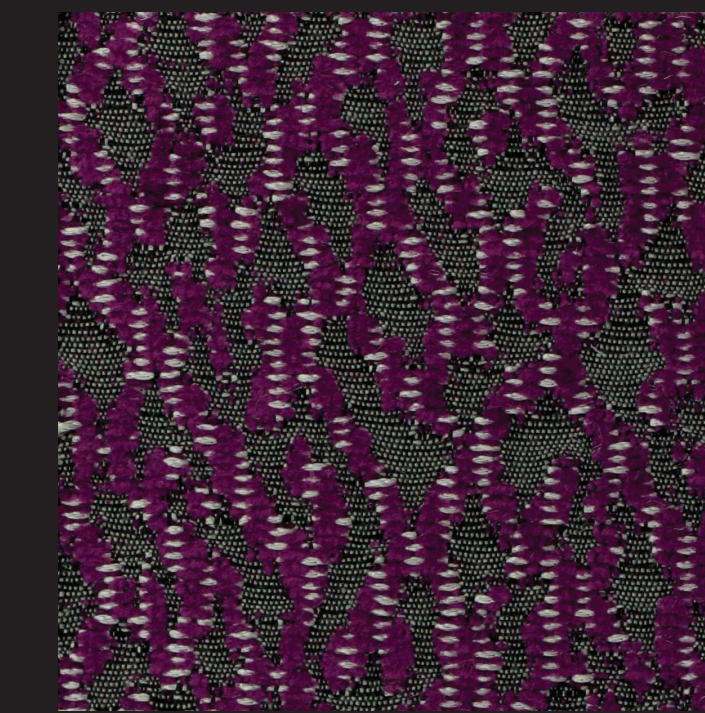
SLATE # 01



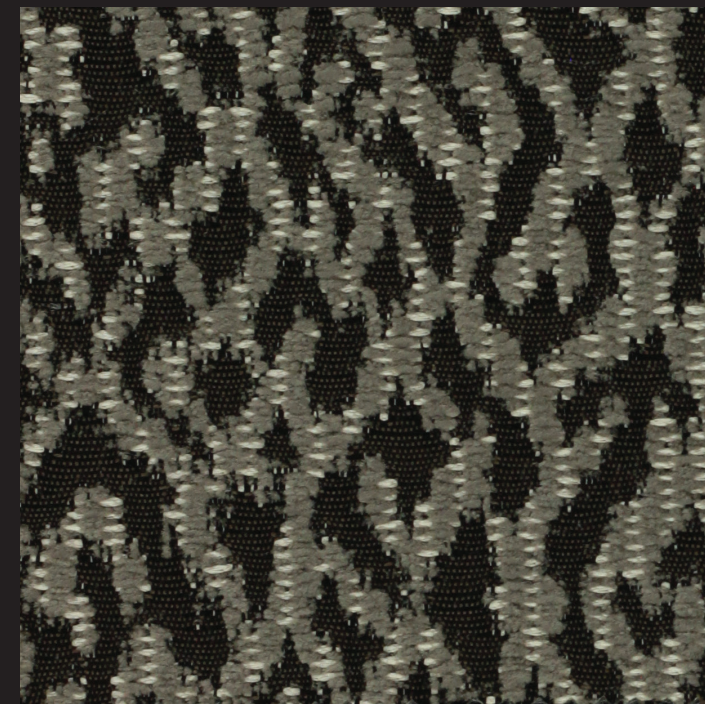
NOUGAT # 05



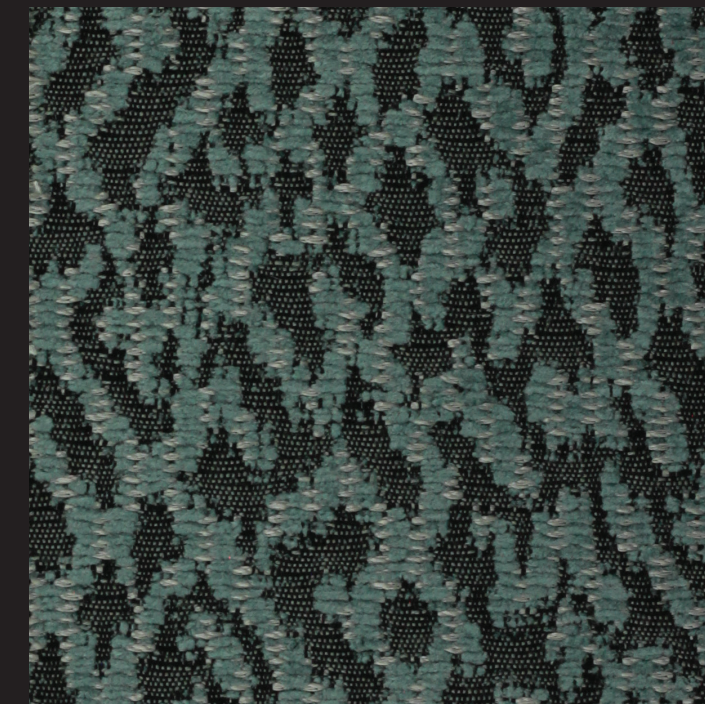
COBALT # 11



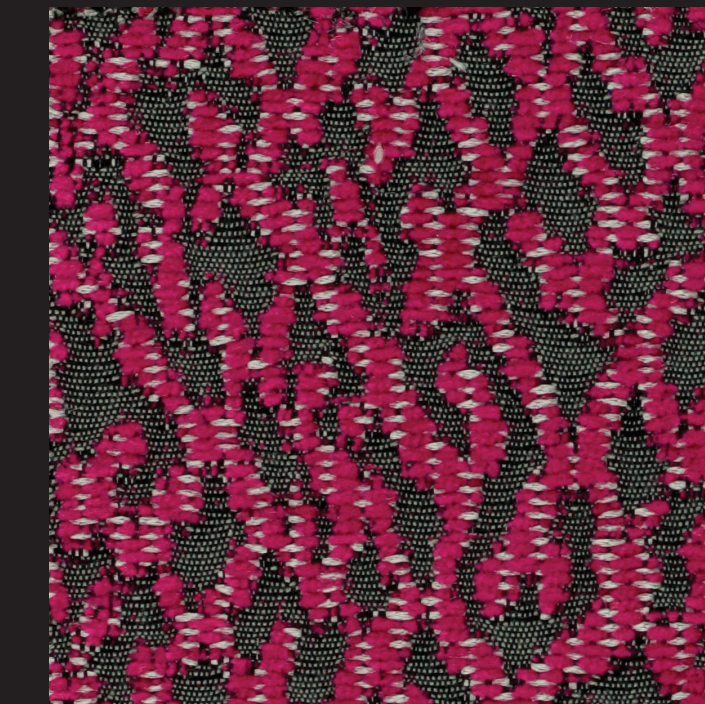
DAMSON # 14



PEBBLE # 06



CELADON # 09



FUCHSIA # 13

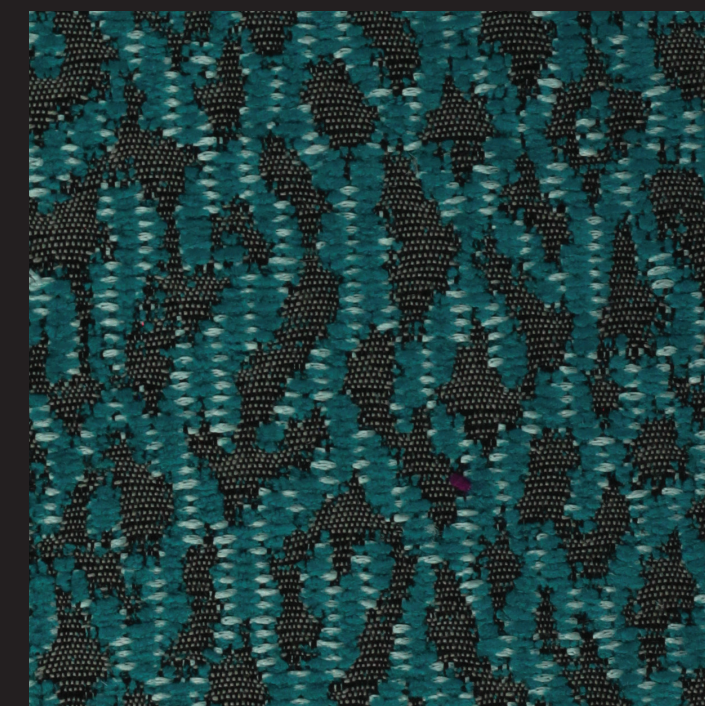


MARBLE # 04

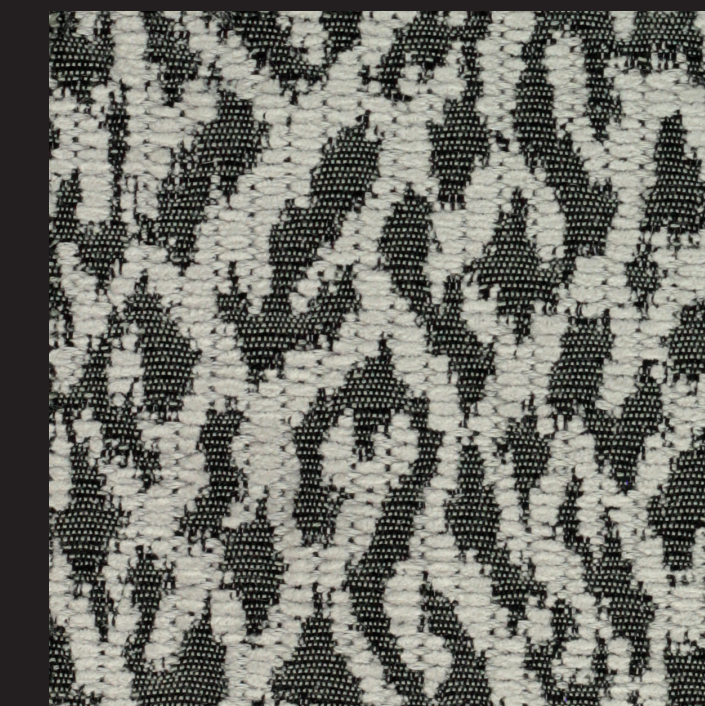
COMPOSITION	:	60% Polyester - 35% Viscose - 5% Cotton
WIDTH	:	139 cm
WEIGHT	:	621 gsm
HORIZONTAL PATTERN REPEAT	:	34 cm
VERTICAL PATTERN REPEAT	:	32 cm
PATTERN MATCH	:	Straight match
UK/EIRE Flamcode	:	(UK Flamcode K) Must FR treat upholstery in UK/Eir
MARTINDALE	:	30,000
TEST PASSED	:	EN 1021-1
PRODUCT AFTER CARE	:	
PRODUCT USAGE	:	



OYSTER # 07



TORQUOISE # 10



SILVER BIRCH # 03



NOIR # 02

IMPORTANTE: Non usare detersivi che contengono ossidanti o candeggianti ottici
IMPORTANT: Do not use detergents containing oxidands or optical bleaches

"SUNRISE Collection"
Bird's Eye Maple



"ALCHEMY Collection"
African Tyger Sycamore



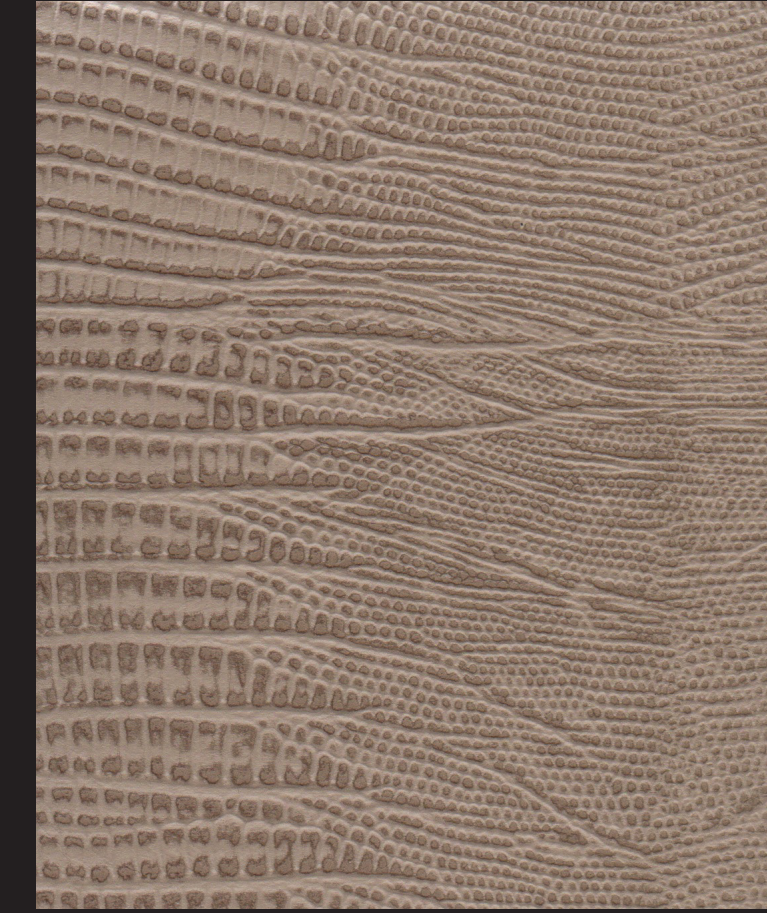
"COLISEUM Collection"
Brazilian Rosewood



"MONTECARLO Collection"
Moka Curly Sycamore



"Life time Collection"
Armadillo Printed Leather



"Charisma Collection"
Black Bubinga Burl



WOODS

"ABSOLUTE Collection"
Japanese Tamos Burl



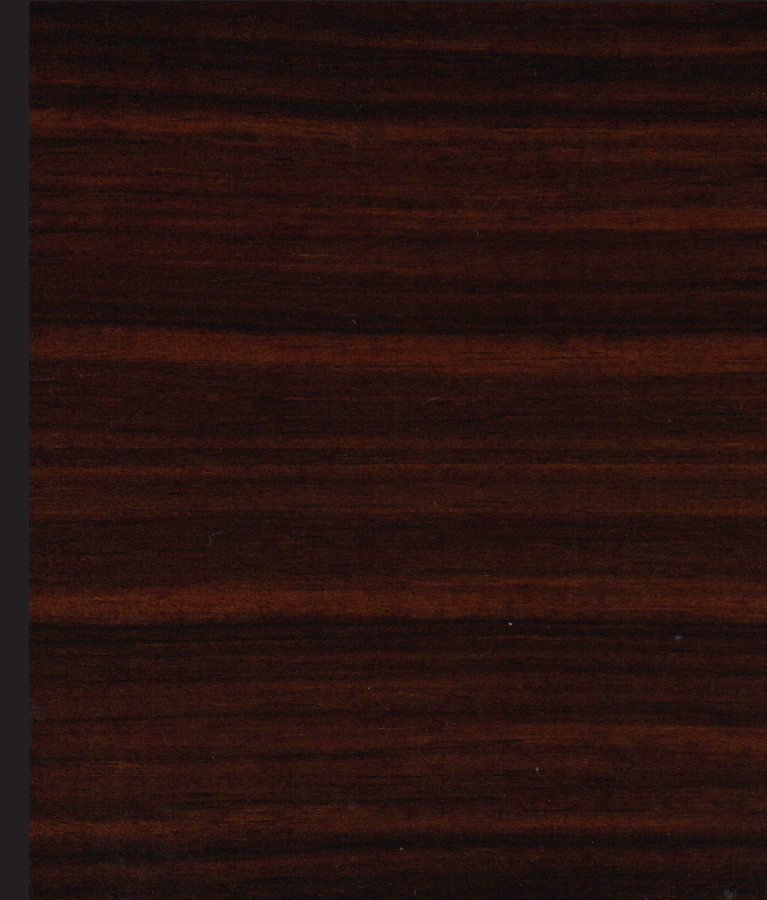
"VOGUE Collection"
Curly Eucaliptus



"DAY DREAM Collection"
Dark Makassar Ebony



"LUNA Collection"
Makassar Ebony



"INFINITY Collection"
Grey Makorè



"VISION Collection"
Polyestere Lacquer

