

LA FORMA  
DELLE COSE A  
VENIRE



THE SHAPE OF  
THINGS TO  
COME

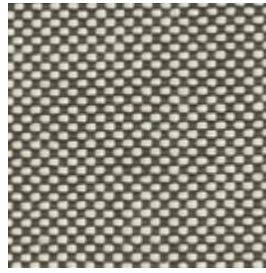
**BONTEMPI**<sup>®</sup>  
CASA

TESSUTO **kvadrat** FIELD

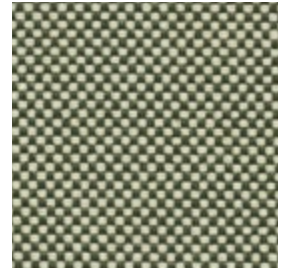
**kvadrat** FIELD FABRIC | TISSU **kvadrat** FIELD | STOFF **kvadrat** FIELD | TEJIDO **kvadrat** FIELD | ТКАНЬ **kvadrat** FIELD



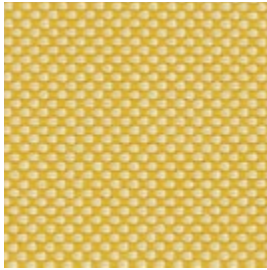
**TKF01** Sale & pepe | Salt & pepper | Sel & poivre | Salz & Pfeffer |  
Sal & pimienta | Соль и перец



**TKF02** Sabbia | Sand | Sable | Sand |  
Arena | Песочный



**TKF03** Verde | Green | Vert | Grün |  
Verde | Зеленый



**TKF04** Giallo | Yellow | Jaune | Gelb |  
Amarillo | Желтый



**TKF06** Blu indaco | Indigo blue |  
Bleu indigo | Blau | Azul indigo |  
Синий индиго



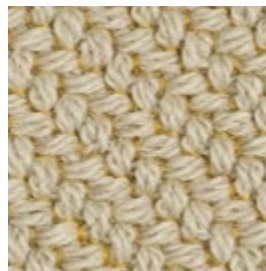
**TKF05** Bruciato | Burnt brown |  
Marron brûlé | Dunkelbraun |  
Quemado | Опаленный

TESSUTO **kvadrat** CODA

**kvadrat** CODA FABRIC | TISSU **kvadrat** CODA | STOFF **kvadrat** CODA | TEJIDO **kvadrat** CODA | ТКАНЬ **kvadrat** CODA



**TKC03** Celeste | Light blue | Bleu ciel | Hell blau | Celeste | Голубой



**TKC01** Mandorla | Almond | Amande |  
Mandel | Almendra | Миндаль



**TKC02** Giallo senape |  
Mustard yellow | Moutarde |  
Senf | Amarillo mostaza |  
Желтая горчица



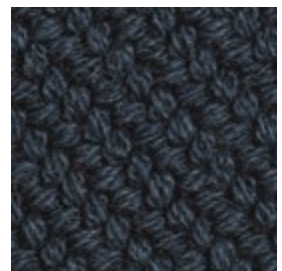
**TKC04** Salmone | Salmon | Saumon |  
Lachs | Salmón | Семга



**TKC05** Verde salvia | Sage green |  
Vert sauge | Salbei grün |  
Verde salvia | Зеленый  
шалфей



**TKC07** Talpa | Grey | Gris | Grau |  
Gris | Серовато-Коричневый



**TKC06** Denim | Denim | Bleu denim |  
Denim | Denim | Деним

## TESSUTO **kvadrat** FIELD

**kvadrat** FIELD FABRIC | TISSU **kvadrat** FIELD | STOFF **kvadrat** FIELD | TEJIDO **kvadrat** FIELD | ТКАНЬ **kvadrat** FIELD

**COMPOSIZIONE** | COMPOSITION  
100% Trevira® CS

**SIMBOLOGIA** | LIST OF SYMBOLS



**RITIRO STIMATO** | ESTIMATED SHRINKAGE  
2%

**ALTEZZA** | WIDTH  
140 cm | 55.1 inch

**SOLIDITÀ DEL COLORE ALLA LUCE** | COLOUR FASTNESS TO LIGHT  
5/7 ISO 105 B02

**RESISTENZA AL PILLING** | PILLING RESISTANCE  
4/5 EN ISO 12945

**RESISTENZA ALL'ABRASIONE** | ABRASION RESISTANCE  
100.000 cicli-rubs martindale EN ISO 12947

**IGNIFUGO** | FIRE RETARDANT  
T UNI 9177 Class 1 DE/EU DIN 4102 B1

GB BS 5852 Crib 5 EU EN 1021-1/2

FR NF P 92 507 M1

AT Önorm B1/Q1

U.S.A US Cal. Bull. 117-2013 IMO FTP Code 2010:Part 8



**METODO DI PULIZIA** | CLEANING INSTRUCTIONS

Per la pulizia, utilizzare un panno di cotone inumidito con acqua.

*For cleaning, use a cloth dampened with water.*



## TESSUTO **kvadrat** CODA

**kvadrat** CODA FABRIC | TISSU **kvadrat** CODA | STOFF **kvadrat** CODA | TEJIDO **kvadrat** CODA | ТКАНЬ **kvadrat** CODA

**COMPOSIZIONE** | COMPOSITION

90% lana vergine | virgin wool | laine vierge reine Schnurwolle | lana virgin | Натуральная шерсть  
10% nylon | nylon | nylon | nylon | nylon | Нейлон

**SIMBOLOGIA** | LIST OF SYMBOLS



**ALTEZZA** | WIDTH  
140 cm | 55.1 inch

**SOLIDITÀ DEL COLORE ALLA LUCE** | COLOUR FASTNESS TO LIGHT  
5/7 ISO 105 B02

**RESISTENZA AL PILLING** | PILLING RESISTANCE  
4 EN ISO 12945

**RESISTENZA ALL'ABRASIONE** | ABRASION RESISTANCE  
100.000 cicli-rubs martindale EN ISO 12947

**IGNIFUGO** | FIRE RETARDANT

IT UNI 9175 11M DE/EU DIN 4102 B2 GB BS 5852 part 1 EU EN 1021-1/2

FR NF D 60 013

AT Önorm B2/Q1

U.S.A US Cal. Bull. 117-2013

NFPA 260

IMO FTP Code 2010:Part 8



**METODO DI PULIZIA** | CLEANING INSTRUCTIONS

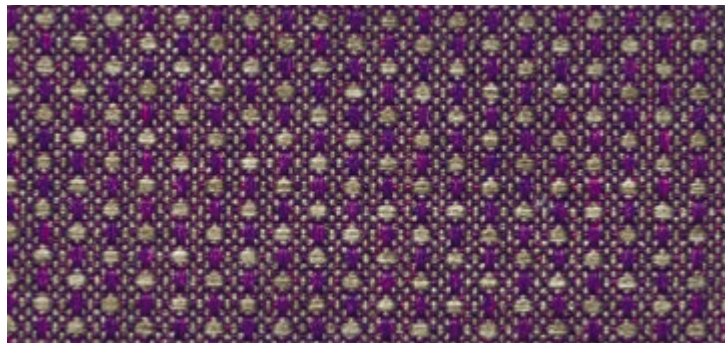
Rimuovere polvere e residui utilizzando un aspirapolvere a bassa intensità.

*Remove dust and dirt using a low-power vacuum.*



# TESSUTO MAMBO

MAMBO FABRIC | TISSU MAMBO | STOFF MAMBO | TEJIDO MAMBO | ТКАНЬ MAMBO



**TMA07** Viola oro | Violet gold | Violet or | Violett gold | Violeta oro | Фиолетово-золотой



**TMA01** Bianco | White | Blanc | Weiß | Blanco | Белый



**TMA02** Ghiaccio | Ice | Glace | Eis | Hielo | Лед



**TMA03** Grigio chiaro | Light grey | Gris clair | Hell grau | Gris claro | Светло-серый



**TMA04** Tortora | Dove grey | Tourterelle | Taubengrau | Gris ceniciento | Серо-бежевый



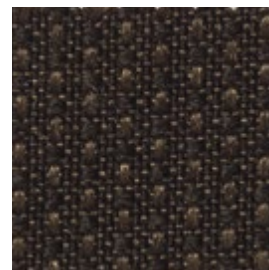
**TMA05** Senape | Mustard | Moutarde | Senffarbe | Mostaza | Горчица



**TMA06** Corallo oro | Coral gold | Corail or | Koralle gold | Coral oro | Кораллово-золотой



**TMA11** Nero oro | Black gold | Noir or | Schwarz gold | Negro oro | Черно-золотой



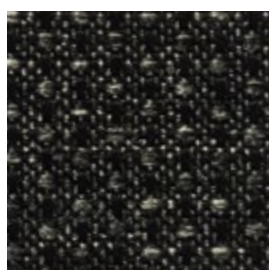
**TMA10** Testa di moro | Dark brown | Marron foncé | Dunkelbraun | Marrón oscuro | Темно-коричневый



**TMA08** Turchese | Turquoise | Turquoise | Türkis | Turquesa | Бирюза



**TMA09** Blu di Prussia | Prussian blue | Bleu de Prusse | Preußisch blau | Azul de Prusia | Прусский синий



**TMA12** Antracite | Anthracite | Anthracite | Anthrazit | Antracita | Антрацит

# TESSUTO MAMBO

MAMBO FABRIC | TISSU MAMBO | STOFF MAMBO | TEJIDO MAMBO | ТКАНЬ MAMBO

## COMPOSIZIONE | COMPOSITION

100% polipropilene | polypropylene | polypropylène | Polypropylen | polipropileno | полипропилен

## SIMBOLOGIA | LIST OF SYMBOLS



## RITIRO STIMATO | ESTIMATED SHRINKAGE

0%

## ALTEZZA | WIDTH

140 cm | 55.1 inch

## SOLIDITÀ DEL COLORE ALLA LUCE | COLOUR FASTNESS TO LIGHT

xeno ISO 105 B02

4/5

## SOLIDITÀ DEL COLORE ALLO SFREGAMENTO | COLOUR FASTNESS TO RUBBING

crockmeter ISO 105 X12

secco-dry 5

umido-wet 4/5

## RESISTENZA AL PILLING | PILLING RESISTANCE

ISO 12945-2

4/5

## RESISTENZA ALLO SCORRIMENO FILI | SEAM SLIPPAGE

ISO 13936-2

1,50 mm

## RESISTENZA ALL'ABRASIONE | ABRASION RESISTANCE

martindale ISO 12947-2

≥ 33.000 cicli-rubs



## FILATO IDROREPELENTE | WATERPROOF YARN

La collezione è impreziosita da un trattamento idrorepellente che ne garantisce la facile pulizia.

*Collection is enhanced by waterproof treatment in order to allow easy cleaning.*



## ANTISTATICO | ANTISTATIC



## ANALLERGICO/ANTIBATTERICO | HYPOALLERGENIC/ANTIBACTERIAL



## IRRESTRINGIBILE | NO-SHRINKAGE



## IGNIFUGO | FIRE RETARDANT

IT UNI 9175 Class 1IM

EU EN 1021-1:2006

EN 1021-2:2006

FR NF D 60-013:2006 (art. AM 18)

U.S.A CALIFORNIA TB 117:2013

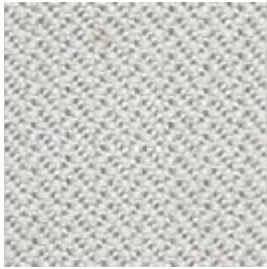
NAUTICO FTP code 307(88):10 annex 1 part 8

# TESSUTO LULÙ

LULÙ FABRIC | TISSU LULÙ | STOFF LULÙ | TEJIDO LULÙ | ТКАНЬ LULÙ



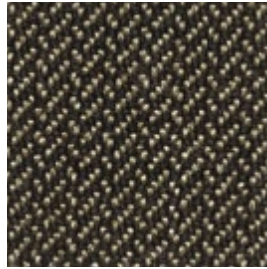
**TLU09** Petrolio | Petroleum | Pétrole | Ólfarbe | Petróleo | Нефть



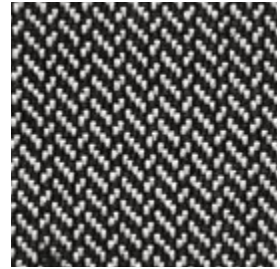
**TLU01** Ghiaccio | Ice | Glace | Eis | Hielo | Лед



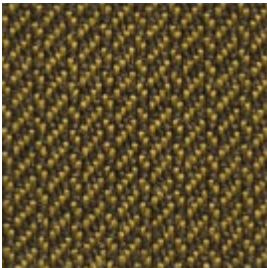
**TLU02** Tortora | Dove grey | Tourterelle | Taubengrau | Gris ceniciento | Серо-бежевый



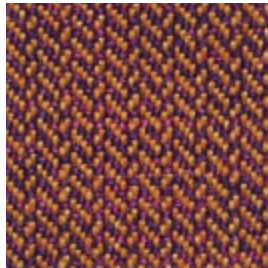
**TLU04** Testa di moro | Dark brown | Marron foncé | Dunkelbraun | Marrón oscuro | Темно-коричневый



**TLU03** Sale & pepe | Salt & pepper | Sel & poivre | Salz & Pfeffer | Sal & pimienta | Соль и перец



**TLU05** Senape | Mustard | Moutarde | Senffarbe | Mostaza | Горчица



**TLU06** Arancio viola | Orange violet | Orange pourpre | Orange violett | Naranja violeta | Оранжево-фиолетовый



**TLU07** Viola grigio | Violet grey | Gris violet | Violett grau | Violeta gris | Фиолетово-серый



**TLU08** Azzurro polvere | Powder blue | Bleu pastel | Puderblau | Azul polvo | Синий порошок

# TESSUTO LULÙ

LULÙ FABRIC | TISSU LULÙ | STOFF LULÙ | TEJIDO LULÙ | ТКАНЬ LULÙ

## COMPOSIZIONE | COMPOSITION

100% polipropilene | polypropylene | polypropylène | Polypropylen | polipropileno | полипропилен

## SIMBOLOGIA | LIST OF SYMBOLS



## RITIRO STIMATO | ESTIMATED SHRINKAGE

0%

## ALTEZZA | WIDTH

140 cm | 55.1 inch

## SOLIDITÀ DEL COLORE ALLA LUCE | COLOUR FASTNESS TO LIGHT

xeno ISO 105 B02

4/5

## SOLIDITÀ DEL COLORE ALLO SFREGAMENTO | COLOUR FASTNESS TO RUBBING

crockmeter ISO 105 X12

secco-dry 5

umido-wet 4/5

## RESISTENZA AL PILLING | PILLING RESISTANCE

ISO 12945-2

4/5

## RESISTENZA ALLA STRAMATURA | SEAM SLIPPAGE

ISO 12945-2

1,50 mm | 0.059 inch

## RESISTENZA ALL'ABRASIONE | ABRASION RESISTANCE

martindale ISO 12947-2

≥ 40.000 cicli-rubs



## FILATO IDROREPELENTE | WATERPROOF YARN

La collezione è impreziosita da un trattamento idrorepellente che ne garantisce la facile pulizia.

*Collection is enhanced by waterproof treatment in order to allow easy cleaning.*



## ANTISTATICO | ANTISTATIC



## ANALLERGICO/ANTIBATTERICO | HYPOALLERGENIC/ANTIBACTERIAL



## IRRESTRINGIBILE | NO-SHRINKAGE



## IGNIFUGO | FIRE RETARDANT

IT UNI 9175 Class 11M

EU EN 1021-1:2006

EN 1021-2:2006

FR NF D 60-013:2006 (art. AM 18)

U.S.A CALIFORNIA TB 117:2013

NAUTICO FTP code 307(88):10 annex 1 part 8

# TESSUTO OUTDOOR



OUTDOOR FABRIC | TISSU D'EXTERIEUR | OUTDOOR BEZÜGE | TEJIDO DE EXTERIOR | ТКАНЬ ДЛЯ ИСПОЛЬЗОВАНИЯ ВНЕ ПОМЕЩЕНИЙ

BONTEMPI  
CASA



**TOU04** Grigio melange | Mélange grey | Gris melange | Melange Grau | Gris jaspeado | Серый меланж



**TOU01** Vaniglia | Vanilla | Vanille | Vanilla Farbe | Vainilla | Ваниль



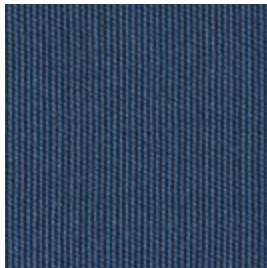
**TOU02** Sabbia | Sand | Sable | Sand | Arena | Песок



**TOU03** Castagna | Chestnut brown | Marron châtaigne | Kastanienbraun | Castaño | Каштан



**TOU05** Antracite | Anthracite | Anthracite | Anthrazit | Antracita | Антрацит



**TOU06** Azzurro polvere | Blue Grey | Gris Bleu | Grau Blau | Azul polvo | Синий порошок



**TOU07** Blu navy | Blue navy | Bleu marine | Ultramarinblau | Azul Navy | Темно-синий





# TESSUTO OUTDOOR

OUTDOOR FABRIC | TISSU D'EXTERIEUR | OUTDOOR BEZÜGE | TEJIDO DE EXTERIOR | ТКАНЬ ДЛЯ ИСПОЛЬЗОВАНИЯ ВНЕ ПОМЕЩЕНИЙ

## COMPOSIZIONE | COMPOSITION

100% fibra acrilica | acrylic fiber | fibre acrylique | Acrylfaser | fibra acrílica | акриловые волокна

## SIMBOLOGIA | LIST OF SYMBOLS



## RITIRO STIMATO | ESTIMATED SHRINKAGE

0%

## ALTEZZA | WIDTH

160 cm | 63 inch



## SOLIDITÀ DEL COLORE ALLE INTEMPERIE | COLOUR FASTNESS TO BAD WEATHER

UNI EN ISO 105 B 04

7/8



## SOLIDITÀ DELLE TINTE ALL'ACQUA CLORATA | COLOUR FASTNESS TO CHLORINATED WATER

UNI EN ISO 105 E 03

4/5



## SOLIDITÀ DELLE TINTE ALL'ACQUA DI MARE | COLOUR FASTNESS TO SEA WATER

UNI EN ISO 105 E 02

4/5 - 5



## ADATTO USO NAVALE | SUITABLE FOR NAVAL USE

ISO 12945-2

1,50 mm | 0.059 inch



## ADATTO USO MEDICO | SUITABLE FOR MEDICAL USE



## IGNIFUGO | FIRE RETARDANT

EU EN1021-1:2006

EN1021-2:2006

GB BS 5852-0:1979 (sigarette-cigarette)

BS 5852-1:1979 (fiammifero-match)

U.S.A CALIFORNIA TB 117:2013

NAUTICO IMO MSC. 370 (88)



## FINISSAGGIO | FINISHING

Trattamento Teflon anti-macchia e anti-muffa.

*Teflon with stain and mildew-resistant treatment.*



## METODO DI PULIZIA | CLEANING INSTRUCTIONS

Per la pulizia utilizzare un panno di cotone umido d'acqua.

*For cleaning, use a cotton cloth dampened with water.*

# PELLE ECOLOGICA

ECOLEATHER | CUIR ÉCOLOGIQUE | KUNSTLEDER | ECOPIEL | ЭКОЛОГИЧЕСКАЯ КОЖА



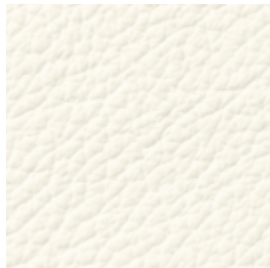
**TR521** Verde chiaro | Light green | Vert clair | Hell Grün | Verde claro | Светло-зелёный



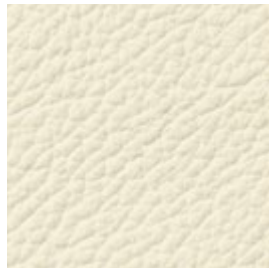
**TR518** Sabbia | Sand | Sable | Sand | Arena | Песочный



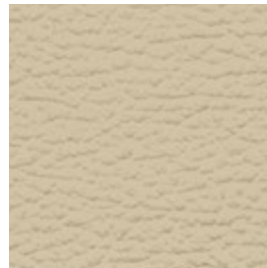
**TR523** Nocciola | Hazelnut | Noisette | Haselnuß | Avellana | Орех



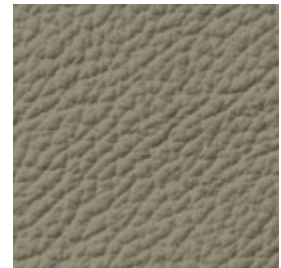
**TR505** Bianco | White | Blanc | Weiß | Blanco | Белый



**TR500** Avorio | Ivory | Ivoire | Elfenbeinfarbe | Marfil | Слоновая кость



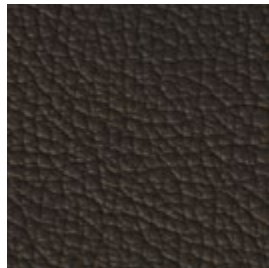
**TR501** Beige | Beige | Beige | Beige | Beige | беж



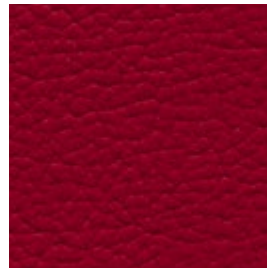
**TR519** Fango | Mud | Vase | Schlammfarbig | Barro | Серо-коричневый



**TR510** Marrone | Brown | Marron | Braun | Marrón | Коричневый



**TR503** Testa di moro | Dark brown | Marron foncé | Dunkelbraun | Marrón oscuro | Темно-коричневый



**TR502** Rosso | Red | Rouge | Rot | Rojo | Красный



**TR509** Bordeaux | Bordeaux | Bordeaux | Bordeaux | Bordeaux | Бордо



**TR525** Giallo | Yellow | Jaune | Gelb | Amarillo | Жёлтый



**TR522** Cipria | Old Rose | Vieux Rose | Alte Rose | Rojo Viejo | Пудра



**TR524** Verdone | Dark green | Vert foncé | Dunkelgrün | Verde oscuro | Тёмно-зелёный



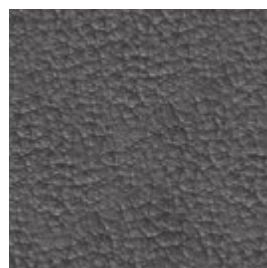
**TR514** Blu | Blue | Bleu | Blau | Azul | Синий



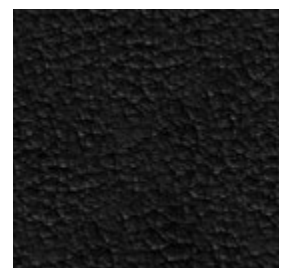
**TR515** Blu cobalto | Cobalt blue | Bleu cobalt | Kobaltblau | Azul cobalto | Синий кобальт



**TR516** Grigio chiaro | Light grey | Gris clair | Hell grau | Gris claro | Светло-серый



**TR517** Antracite | Anthracite | Anthracite | Anthrazit | Antracita | Антрацит



**TR504** Nero | Black | Noir | Schwarz | Negro | Черный

# PELLE ECOLOGICA

ECOLEATHER | CUIR ÉCOLOGIQUE | KUNSTLEDERI ECOPIEL | ЭКОЛОГИЧЕСКАЯ КОЖА

## COMPOSIZIONE | COMPOSITION

50% poliuretano | polyurethane | polyuréthane | Polyurethan | poliuretano | полиуретан  
33% cotone | cotton | coton | Baumwolle | algodón | хлопок  
17% poliestere | polyester | polyester | Polyester | poliéster | полиэстер

## SIMBOLOGIA | LIST OF SYMBOLS



## RITIRO STIMATO | ESTIMATED SHRINKAGE

0%

## ALTEZZA | WIDTH

140 cm | 55.1 inch

## SPESSORE | THICKNESS

1,0 mm | 0.04 inch

## SOLIDITÀ DEL COLORE ALLO SFREGAMENTO | COLOUR FASTNESS TO RUBBING

crockmeter ISO 105 X12

secco-dry 4/5

umido-wet 4/5

## SOLIDITÀ DEL COLORE ALLA LUCE ARTIFICIALE AD ALTE TEMPERATURE

COLOUR FASTNESS TO ARTIFICIAL LIGHT AT HIGH TEMPERATURE

4/5 EN ISO 12945

xeno ISO 105 B06

5

## SOLIDITÀ DEL COLORE ALLA LUCE ARTIFICIALE | COLOUR FASTNESS TO ARTIFICIAL LIGHT

xeno ISO 105 B02

4/5

## RESISTENZA ALL'ABRASIONE | ABRASION RESISTANCE

bally - UNI EN 13512

80.000 cicli-rubs

## RESISTENZA ALLE FLESSIONI DOPO JUNGLE TEST (H336)

RESISTANCE TO FLEXURES AFTER JUNGLE TEST (H336)

UNI 4818/92 P.29A + UNI EN 13512

50.000 cicli-rubs



## IGNIFUGO | FIRE RETARDANT

USA California Bull 117 sez.E



## METODO DI PULIZIA | CLEANING INSTRUCTIONS

Per la pulizia utilizzare un panno di cotone umido e detergente neutro diluito con acqua.

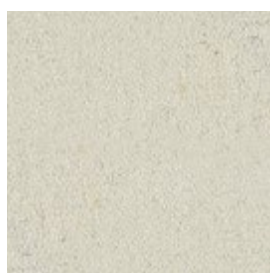
*For cleaning, use a soft damp cloth and gentle detergent diluted with water.*

# WATERPROOF NABUK

WATERPROOF NABUK | WATERPROOF NABUK | WASSERDICHT NABUK | WATERPROOF NABUK | ВОДОНЕПРОНИЦАЕМЫЙ НУБУК



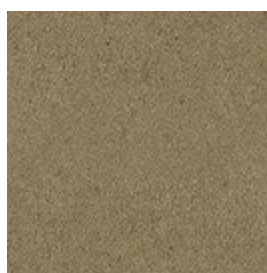
**TN006** Blu Bondi | Blue Bondi | Bondi Bleu | Blau Bondi | Azul Bondi | Темная ночь



**TN001** Bianco | White | Blanc | Weiß | Blanco | Белый



**TN002** Sabbia | Sand | Sable | Sand | Arena | Песочный



**TN010** Biscotto | Biscuit | Biscuit | Biskuit | Biscocho | Бисквитный



**TN003** Tortora | Dove grey | Gris tourterelle | Taubengrau | Gris ceniciento | Серо-бежевый



**TN004** Visone | Mink | Vison | Nerz | Vison | Норка



**TN009** Testa di moro | Dark brown | Marron foncé | Dunkelbraun | Marrón oscuro | Темно-коричневый



**TN008** Bordeaux | Bordeaux | Bordeaux | Bordeaux Rot | Burdeos | Бордо



**TN005** Cielo | Light blue | Bleu clair | Hell blau | Celeste | Небо



**TN007** Antracite | Anthracite | Anthracite | Anthrazit | Antracita | Антрацит

## WATERPROOF NABUK STAMPATO

WATERPROOF PRINTED NABUK | WATERPROOF NABUK IMPRIMÉ | WASSERDICHT NABUK BEDRUCKT | WATERPROOF NABUK IMPRESO | ВОДОНЕПРОНИЦАЕМЫЙ НУБУК, ПРИНТ



**TNS08** Pied de poule sale&pepe | Pied de poule salt&pepper | Pied de poule sel&poivre | Pied de poule Salz&Pfeffer | Pied de poule sal&pimienta | Гусиная лапка Перец с Солью



**TNS09** Anelli sale&pepe | Rings salt&pepper | Anneaux sel&poivre | Ringen Salz&Pfeffer | Anillos sal&pimienta | Кольца Перец с Солью

# WATERPROOF NABUK

WATERPROOF NABUK | WATERPROOF NABUK

## COMPOSIZIONE | COMPOSITION

55% poliestere | polyester | polyester | Polyester | poliéster | полиэстер  
35% poliuretano | polyurethane | polyuréthane | Polyurethan | poliuretano | полиуретан  
10% cotone | cotton | coton | Baumwolle | algodón | хлопок

## SIMBOLOGIA | LIST OF SYMBOLS



## RITIRO STIMATO | ESTIMATED SHRINKAGE

0,5%

## ALTEZZA | WIDTH

140 cm | 55.1 inch

## RESISTENZA ALL'ABRASIONE | ABRASION RESISTANCE

UNI EN ISO 12947-2:2000

≥ 30000 giri-cycles

## RESISTENZA AL PILLING | PILLING RESISTANCE

UNI EN ISO 12945-2:2002

5000 cycles

≥4/5

## SOLIDITÀ DEL COLORE ALLA LUCE ARTIFICIALE AD ALTE TEMPERATURE

COLOUR FASTNESS TO ARTIFICIAL LIGHT AT HIGH TEMPERATURE

4/5 EN ISO 12945

xeno ISO 105 B06

5

## SOLIDITÀ DEL COLORE ALLO SFREGAMENTO | COLOUR FASTNESS TO RUBBING

secco-dry UNI EN ISO 105-x12:2003

≥4



## IDROPELENTE | WATERPROOF

La collezione è impreziosita da un trattamento idrorepellente che ne garantisce la facile pulizia.

*Collection is enhanced by waterproof treatment in order to allow easy cleaning.*



## METODO DI PULIZIA

Per la rimozione completa della macchia, si suggerisce di effettuare le seguenti azioni prima che essa si asciughi.

A. usare detersivi a base acquosa, oppure diluire due cucchiaini di ammoniaca in 1 litro d'acqua. Tamponare delicatamente la macchia con un panno inumidito con questa soluzione, girandolo in modo che solo la parte pulita venga a contatto con la macchia.

B. usare solo solventi per la pulizia a secco, non aggressivi, puri e privi d'acqua. Inumidire un panno con la soluzione e seguire la procedura del metodo A.

C. Tamponare delicatamente la macchia con un panno inumidito con alcool, girandolo in modo che solo la parte pulita venga a contatto con la macchia.

FRUTTA: passare una spugna inumidita con acqua fredda.

CIOCCOLATA/CAFFE': tamponare con una spugna inumidita con acqua tiepida.

INCHIOSTRO: seguire il metodo C.

GRASSO/OLIO: seguire il metodo B.

CERA/CANDELA: asportare delicatamente la cera con un coltello smussato o una spatola.

Poi utilizzare il metodo B o coprire la macchia con diversi strati di carta assorbente ed appoggiare il ferro da stiro caldo.

FANGO: asportare delicatamente quanto più sporco possibile con spatola. Lasciare asciugare, quindi aspirare.

Se la macchia persiste, utilizzare la soluzione d'ammoniaca secondo il metodo A.

URINA: utilizzare il metodo A.

VOMITO: asportare cautamente, tamponare con una spugna inumidita con acqua fredda e seguire le istruzioni del metodo A.

## CLEANING INSTRUCTIONS

To get a complete removal of stains, please be advised that the following actions must be taken before stains dry.

A. use only water based cleaning agents. Alternative mix 2 tablespoons of ammonia with 1 litre of water.

Blot the stain gently with a cloth dampened with this solution, turning it so that only the clean part of the cloth is in contact with the stain.

B. use only mild, pure, water-free cleaning solvents. Dampen a cloth with the solution and follow the procedure described in method A.

C. Blot the stain gently with a cloth dampened with alcohol, turning it so that only the clean part of the cloth is in contact with the stain.

FRUIT: sponge with cold water.

CHOCOLATE/COFFEE: sponge with lukewarm water.

INK: as per method C.

GREASE/OIL: as per method B.

WAX/CANDLE: gently scrape wax by using a knife or palette knife. Follow method B or cover the spot with several layers of absorbent paper and warm by ironing it.

MUD: gently lift off as much as soil as possible with a palette knife. Let it dry, then vacuum. For persistent stains, use ammonia solution as per method A.

URINE: use method A, followed by a small amount of ammoniated liquid detergent.

VOMIT: gently lift off vomit, blot out by using a sponge and cold water, then follow method A.



## RICICLABILE | RECYCLABLE

# PURE VIRGIN WOOL

PURE VIRGIN WOOL | PURE VIRGIN WOOL | REINE SCHNURWOLLE | PURE VIRGIN WOOL | НАТУРАЛЬНАЯ ЧИСТАЯ ШЕРСТЬ



**TL010** Polvere | Powder | Poudre | Puder | Gris polvo | Пыль



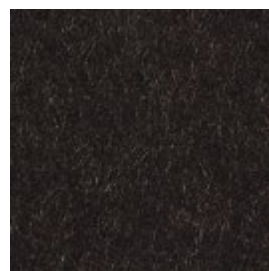
**TL001** Naturale | Natural | Natural | Natürlich | Natural | Натуральный



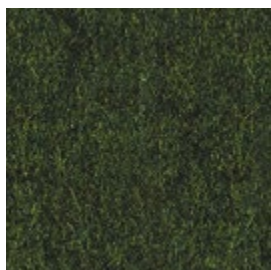
**TL002** Sabbia | Sand | Sable | Sand | Arena | Песочный



**TL011** Melone | Melon yellow | Jaune melon | Melonengelb | Amarillo melón | Дыня



**TL003** Testa di moro | Dark brown | Marron foncé | Dunkelbraun | Marrón oscuro | Темно-коричневый



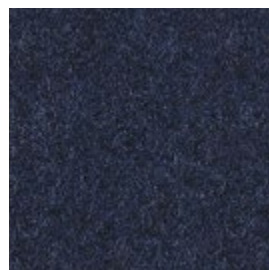
**TL004** Verde bosco | Forest green | Vert forêt | Laubgrün | Verde | Лесная зелень



**TL012** Acquamarina | Aquamarine | Aigue-marine | Aquamarin | Aguamarina | Аквамарин



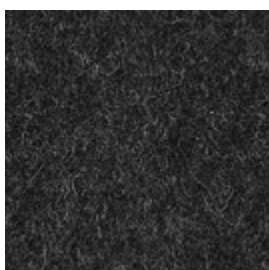
**TL006** Cielo | Light blue | Bleu clair | Hell blau | Celeste | Небо



**TL013** Blu navy | Navy blue | Bleu marine | Nachtblau | Azul navy | Темно-синий



**TL008** Grigio chiaro | Light grey | Gris clair | Hell grau | Gris claro | Светло-серый



**TL009** Antracite | Anthracite | Anthracite | Anthrazit | Antracita | Антрацит

# PURE VIRGIN WOOL

PURE VIRGIN WOOL | PURE VIRGIN WOOL | REINE SCHNURWOLLE | PURE VIRGIN WOOL | НАТУРАЛЬНАЯ ЧИСТАЯ ШЕРСТЬ

## COMPOSIZIONE | COMPOSITION

100% lana vergine | virgin wool | laine vierge | reine Schnurwolle | lana virgen | Натуральная шерсть

## SIMBOLOGIA | LIST OF SYMBOLS



## RITIRO STIMATO | ESTIMATED SHRINKAGE

0%

## ALTEZZA | WIDTH

150 cm | 59 inch

## SPESSORE | THICKNESS

1,3 mm - 0,1 mm | 0.05 inch - 0.004 inch

## SOLIDITÀ DEL COLORE ALLA LUCE | COLOUR FASTNESS TO LIGHT

xeno ISO 105 B12

4/5

## SOLIDITÀ DEL COLORE ALLO SFREGAMENTO | COLOUR FASTNESS TO RUBBING

crockmeter ISO 105 X12

secco-dry 4/5

umido-wet 4

## RESISTENZA AL PILLING | PILLING RESISTANCE

ISO 12945-2

3/4

## RESISTENZA ALL'ABRASIONE | ABRASION RESISTANCE

UNI EN ISO 12947-2:2000

≥ 30000 giri-cycles



## TRATTAMENTO SPECIFICO ANTI-PILLING | SPECIAL ANTI-PILLING TREATMENT

Questo tessuto è stato trattato in finissaggio con il Sistema Termofisico "KD" ed è inalterabile.

Nè la bagnatura, nè il ferro da stiro potranno modificare le caratteristiche della stoffa.

*This fabric has been treated in finishing with the Termophysical System "KD" and it is inalterable.*

*Neither wetting nor ironing modify the characteristic of the cloth.*



## IGNIFUGO | FIRE RETARDANT

IT Classe 1IM

EU EN 1021 1/2

GB BS 5852 1

Naval Industry IMO Resolution



## METODO DI PULIZIA | CLEANING INSTRUCTIONS

Per la pulizia utilizzare un panno di cotone umido d'acqua.

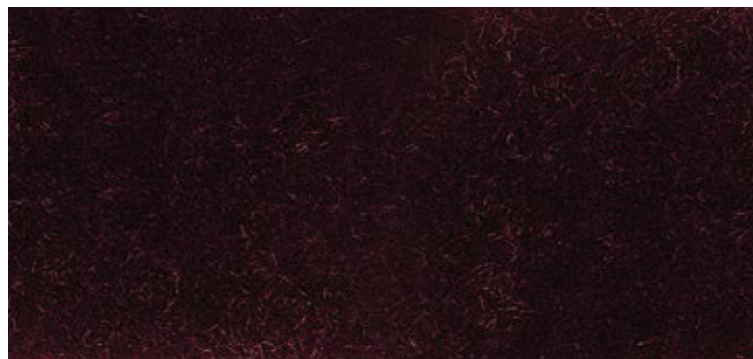
*For cleaning, use a soft damp cloth and gentle detergent diluted with water.*



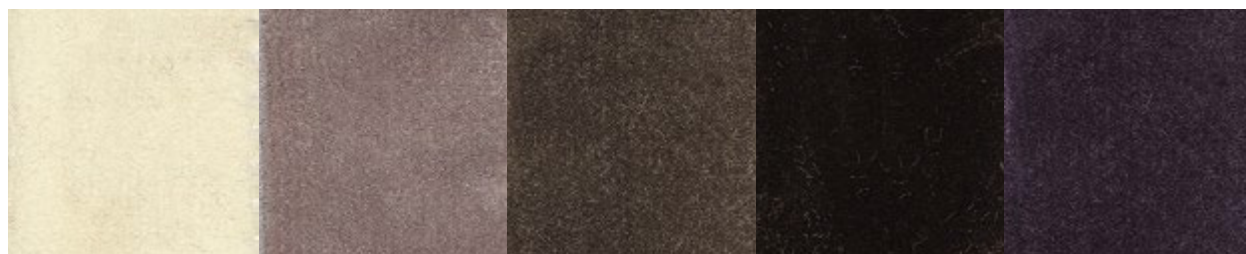
## RICICLABILE | RECYCLABLE

# VELLUTO

VELVET | VELOURS | SAMT | TERCIOPELO | БАРХАТ



**TVE04** Rosso vino | Wine red | Vin rouge | Weinrot | Rojo vino | Красное вино



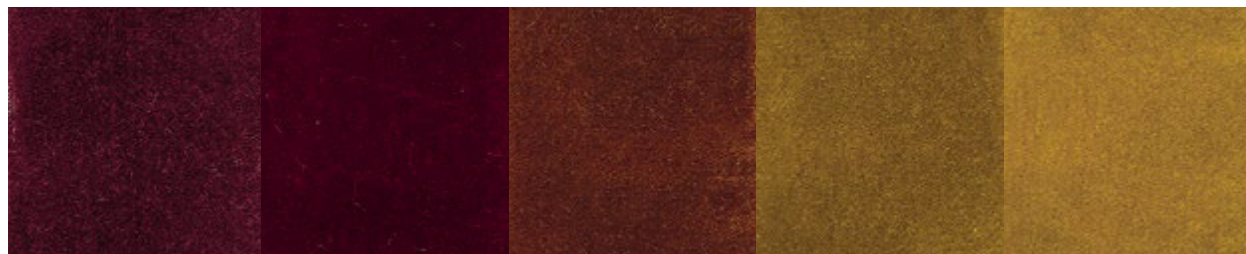
**TVE01** Latte | Milk | Lait | Milch | Leche | Молоко

**TVE13** Cipria | Old rose | Vieux rose | Alte rose | Rojo viejo | Пудра

**TVE02** Tortora | Dove grey | Tourterelle | Taubengrau | Gris ceniciento | Серо-бежевый

**TVE16** Testa di moro | Dark brown | Marron foncé | Dunkelbraun | Marrón oscuro | Темно-коричневый

**TVE03** Prugna | Prune | Prune | Pflaume | Ciruela | Слива



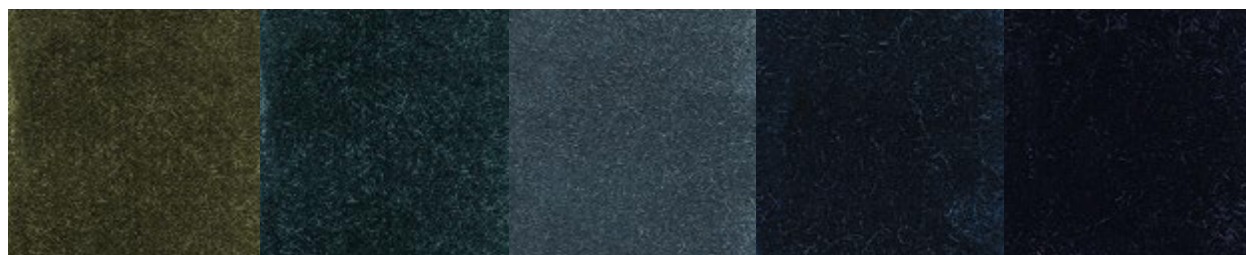
**TVE18** Rosso porpora | Purple red | Rouge pourpre | Purpurrot | Rojo púrpura | Пурпурно-красный

**TVE05** Rosso rubino | Ruby red | Rouge rubis | Rubinrot | Rojo rubí | Rubиново-красный

**TVE06** Terracotta | Terracotta | Terre cuite | Terrakotta | Terracota | Терракота

**TVE07** Senape | Mustard | Moutarde | Senffarbe | Mostaza | Горчица

**TVE08** Giallo | Yellow | Jaune | Gelb | Amarillo | Желтый



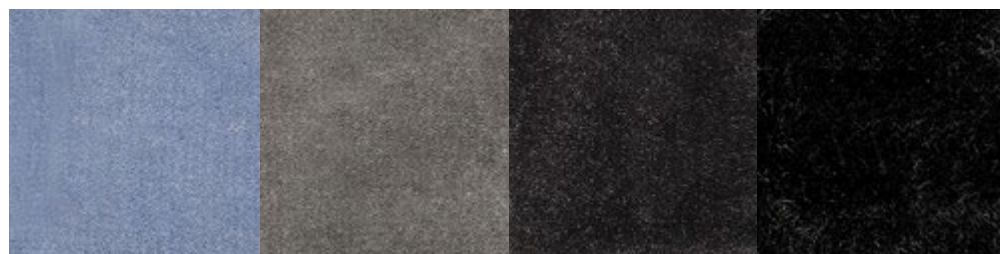
**TVE20** Verdone | Dark green | Vert foncé | Dunkelgrün | Verde oscuro | Темно-зеленый

**TVE09** Verde smeraldo | Emerald green | Vert émeraude | Smaragdgrün | Verde esmeralda | Зеленый изумруд

**TVE10** Petrolio | Petroleum | Pétrole | Ölfarbe | Petróleo | Нефть

**TVE11** Blu pavone | Peacock blue | Bleu paon | Pfau blau | Azul pavo real | Синий павлин

**TVE12** Blu notte | Night blue | Bleu nuit | Nachtblau | Azul noche | Темно-синий



**TVE19** Celeste | Light blue | Bleu ciel | Himmelblau | Celeste | Лазурный

**TVE14** Grigio chiaro | Light grey | Gris clair | Hell grau | Gris claro | Светло-серый

**TVE15** Antracite | Anthracite | Anthracite | Anthrazit | Antracita | Антрацит

**TVE17** Nero | Black | Noir | Schwarz | Negro | Черный



# VELLUTO

VELVET | VELOURS | SAMT | TERCIOPELO | БАРХАТ

## COMPOSIZIONE | COMPOSITION

100% cotone | cotton | coton | Baumwolle | algodón | хлопок

## SIMBOLOGIA | LIST OF SYMBOLS



## RITIRO STIMATO | ESTIMATED SHRINKAGE

0%

## ALTEZZA | WIDTH

140 cm | 55.1 inch

## SOLIDITÀ DEL COLORE ALLA LUCE | COLOUR FASTNESS TO LIGHT

xeno ISO 105 B02

6/8

## RESTRINGIMENTO IN ACQUA 30° | 30° WATER SHRINKAGE

ordito/warp N.A

trama/weft N.A

## RESTRINGIMENTO A SECCO | DRY SHRINKAGE

ordito/warp 1.0%

trama/weft 1.0%

## RESISTENZA AL PILLING | PILLING RESISTANCE

ISO 12945 - 2:2002

5/5

## RESISTENZA ALL'ABRASIONE | ABRASION RESISTANCE

ISO 12947

> 65.000 cicli-rubs



## IDROPELENTE | WATERPROOF

La collezione è impreziosita da un trattamento idrorepellente che ne garantisce la facile pulizia.

*Collection is enhanced by waterproof treatment in order to allow easy cleaning.*



## ANTI AMMACCAMENTO | ANTI-DENTING

Questo velluto di cotone è trattato con un particolare finissaggio al fine di attutire le ammaccature o l'abbassamento del pelo tipico dei velluti. Per ripristinare eventuali ammaccature vaporizzare con acqua da una distanza di 15-20 cm e far asciugare all'aria.

*This cotton velvet is treated with a particular finishing in order to soften dents or typical velvet coat lowering. To restore possible dents vaporize with water from a distance of 15-20 cm | 6 - 8 inches and let air dry.*



## METODO DI PULIZIA | CLEANING INSTRUCTIONS

Per la pulizia vaporizzare la macchia con acqua da una distanza di 15-20 cm e passare con un panno morbido.

Non sfregare. Per togliere la polvere utilizzare una spazzola per velluti a setole morbide.

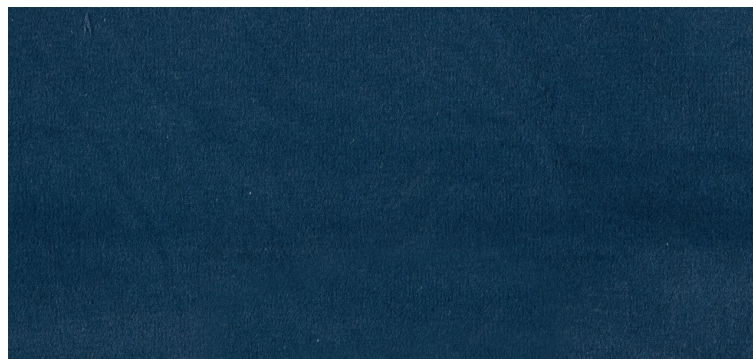
*To clean, spray the stain with water from a distance of 15-20 cm | 6-8 inches and wipe with a soft cloth.*

*Do not rub. To remove dust on velvet, use a soft bristle brush.*

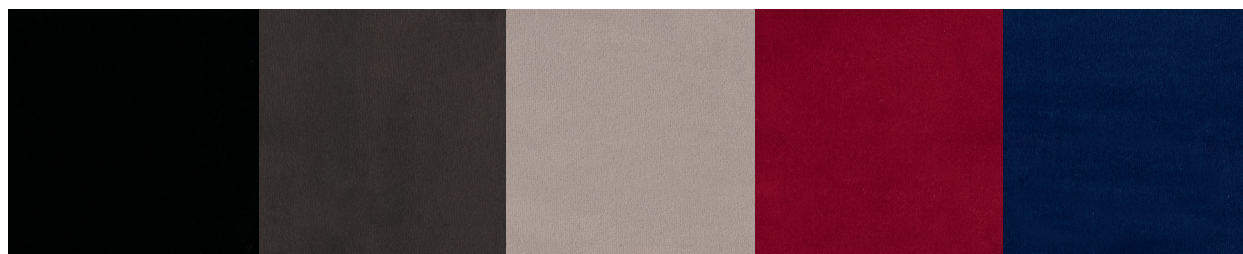
# VELLUTO TECNICO

TECHNICAL VELVET | VELOURS TECHNIQUE | TECHNISCHER SAMT | TERCIOPELO TÉCNICO | ТЕХНИЧЕСКИЙ БАРХАТ

BONTEMPI  
A.A.



**TVT10** Blu laguna | Blue lagoon | Bleu lagon | Lagune blau | Azul laguna | Синяя лагуна



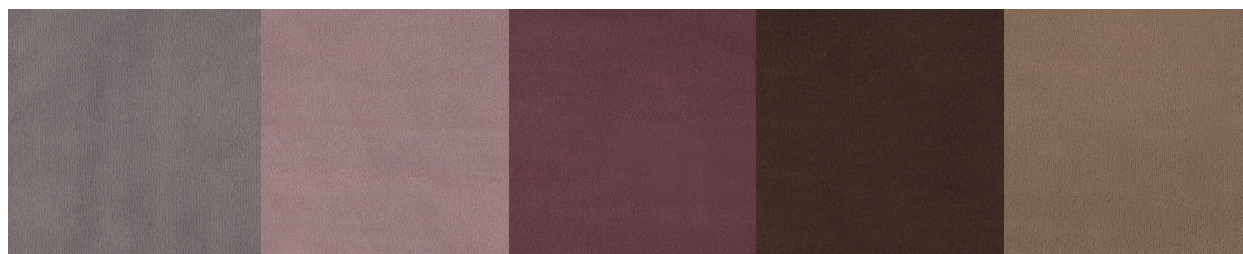
**TVT14** Nero | Black | Noir | Schwarz | Negro | Чёрный

**TVT13** Piombo | Lead-grey | Plomb | Blei | Plomo | Свинец

**TVT01** Grigio nuvola | Grey cloud | Gris platine | Wolke grau | Gris nube | Серое облако

**TVT08** Bitter | Vermillion red | Rouge vin | Bitter | Biter | Биттер

**TVT11** Blu profondo | Dark blue | Bleu foncé | Dunkelblau | Azul profundo | Тёмно-синий



**TVT12** Roccia | Stone | Gris rock | Felz | Roca | Скала

**TVT02** Peonia | Peony | Pivoine | Pfingstrose | Peonia | Пион

**TVT05** Malva scuro | Dark mauve | Mauve foncé | Dunkel Malve | Malva oscuro | Тёмная мальва

**TVT04** Caffè | Coffee | Cafè | Kaffee | Café | Кофе

**TVT03** Cappuccino | Cappuccino | Cappuccino | Cappuccino | Саручино | Капучино



**TVT09** Rosso uva | Red grape | Raisin rouge | Traube rot | Rojo uva | Красный виноград

**TVT07** Brandy | Brandy | Brandy | Brandy | Бренди

**TVT06** Miele | Honey | Miel | Honig | Miel | Мёд

VELLUTO TECNICO  
7A

# VELLUTO TECNICO

TECHNICAL VELVET | VELOURS TECHNIQUE | TECHNISCHER SAMT | TERCIOPELO TÉCNICO | ТЕХНИЧЕСКИЙ БАРХАТ

## COMPOSIZIONE | COMPOSITION

100% Poliestere | Polyester | Polyester | Polyester | Poliéster | Полиэфир

## SIMBOLOGIA | LIST OF SYMBOLS



## ALTEZZA | WIDTH

137 cm | 53.9 inch

## SOLIDITÀ DEL COLORE ALLA LUCE | COLOUR FASTNESS TO LIGHT

ISO 105 B02

4/5

## SOLIDITÀ DEL COLORE ALLO SFREGAMENTO A SECCO | COLOUR FASTNESS TO DRY RUBBING

ISO 105 - X12

4

## SOLIDITÀ DEL COLORE ALLO SFREGAMENTO AD UMIDO | COLOUR FASTNESS TO WET RUBBING

ISO 105 - X12

3/4

## RESISTENZA AL PILLING | PILLING RESISTANCE

ISO 12945 - 2

4/5

## RESISTENZA ALL'ABRASIONE | ABRASION RESISTANCE

ISO 12947 - 2

100.000 cicli-rubs



## IDROREPELENTE | WATERPROOF

La collezione è impreziosita da un trattamento idrorepellente che ne garantisce la facile pulizia.

*The collection is enhanced by waterproof treatment in order to allow easy cleaning.*



## ANTI AMMACCAMENTO | ANTI-DENTING

Questo velluto di cotone è trattato con un particolare finissaggio al fine di attutire le ammaccature o l'abbassamento del pelo tipico dei velluti.

*This cotton velvet is treated with a particular finishing in order to soften dents or typical velvet coat lowering.*



## METODO DI PULIZIA | CLEANING INSTRUCTIONS

Per la rimozione completa della macchia, si suggerisce di effettuare subito le seguenti azioni, prima che essa si asciughi.

Non usare prodotti per la pulizia a secco.

**INCHIOSTRO:** Tamponare delicatamente la macchia con un panno inumidito con alcool, girandolo in modo che solo la parte pulita venga a contatto con la macchia.

**OLIO/ACETO:** Tamponare subito e delicatamente con un panno asciutto o inumidito con acqua.

**CAFFÈ:** Tamponare delicatamente con una spugna inumidita con acqua.

*To get a complete removal of stains, please be advised that the following actions must be taken before stains dry. Do not use dry cleaning products.*

*INK: Blot the stain gently with a cloth dampened with alcohol, turning it so that only the clean part of the cloth is in contact with the stain.*

*OIL / VINEGAR: Immediately blot the stain gently with a dry cloth, or with a cloth dampened with water.*

*COFFEE: Blot the stain gently with a sponge dampened with water.*



## IGNIFUGO | FIRE RETARDANT

BS 5852-1 : 1979, punti 9.3 e 9.4

BS 5852-1 : 1979, punti 9.2 e 9.4

\* Il velluto tecnico nei colori TVT14 - TVT13 - TVT01 - TVT08 - TVT11 è disponibile in versione ignifuga

\* The technical velvet in colours TVT14 - TVT13 - TVT01 - TVT08 - TVT11 is available in fire retardant version

\* Le velours technique dans les couleurs TVT14 - TVT13 - TVT01 - TVT08 - TVT11 est disponible aussi en version ignifuge

\* Der Technischer Samt in den Farben TVT14 - TVT13 - TVT01 - TVT08 - TVT11 ist in feuerbeständiger Version verfügbar

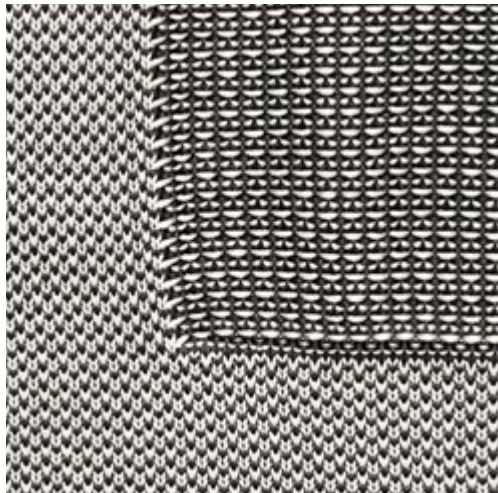
\* El Terciopelo Técnico en los códigos: TVT14 - TVT13 - TVT01 - TVT08 - TVT11 está disponible en versión ignifuga

\* Технический бархат в цветах TVT14 - TVT13 - TVT01 - TVT08 - TVT11 доступен в огнестойкой версии

# TESSUTO ELASTICO A RETE

ELASTIC FABRIC | TISSU EN FILET ÉLASTIQUE | ELASTISCHER NETZSTOFF | TEJIDO DE RED ELÁSTICA | СЕТЧАТАЯ ЭЛАСТИЧНАЯ ТКАНЬ

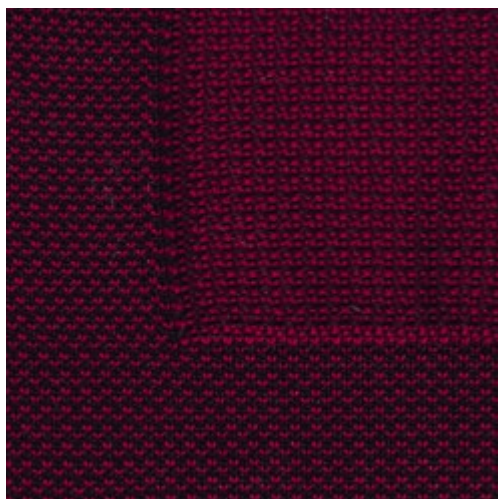
BONTEMPI  
CASA



**TEL02L/TEL02** Bianco nero | White black | Blanc noir |  
Weiß schwarz | Blanco negro | Белый-черный



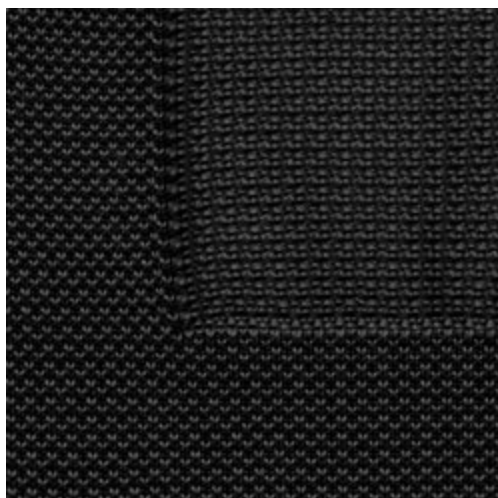
**TEL06L/TEL06** Beige | Beige | Beige | Beige | Beige | Беж



**TEL07L/TEL07** Amaranto | Reddish purple | Amarante | Amarant |  
Amaranto | Амарант



**TEL08L/TEL08** Jeans | Jeans | Jean | Jeans | Denim | Джинс



**TEL05L/TEL05** Nero | Black | Noir | Schwarz | Negro | Черный

TESSUTO ELASTICO A RETE

8A

# TESSUTO ELASTICO A RETE

ELASTIC FABRIC | TISSU EN FILET ÉLASTIQUE | ELASTISCHER NETZSTOFF | TEJIDO DE RED ELÁSTICA | СЕТЧАТАЯ ЭЛАСТИЧНАЯ ТКАНЬ

## COMPOSIZIONE | COMPOSITION

100% Trevira® CS

## RESISTENZA ALLA LACERAZIONE | BREAKING LOAD

DIN EN 2082 CN 2100

## RESISTENZA ALLA FLESSIONE | ELONGATION AT BREAK

DIN ISO 2062 %39



## METODO DI PULIZIA | CLEANING INSTRUCTIONS

Per la pulizia, utilizzare un panno di cotone inumidito con acqua.

*For cleaning, use a cloth dampened with water.*

# TEXPLAST

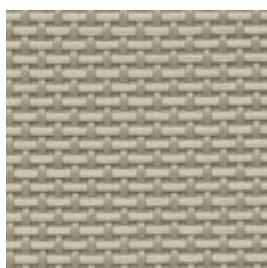
TEXPLAST | TEXPLAST | TEXPLAST | TEXPLAST | ТЕКСПЛАСТ



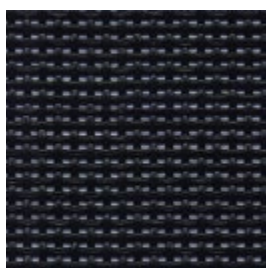
X036 Grigio | Grey | Gris | Grau | Gris | Серый



X039 Bianco | White | Blanc | Weiß | Blanco | белый



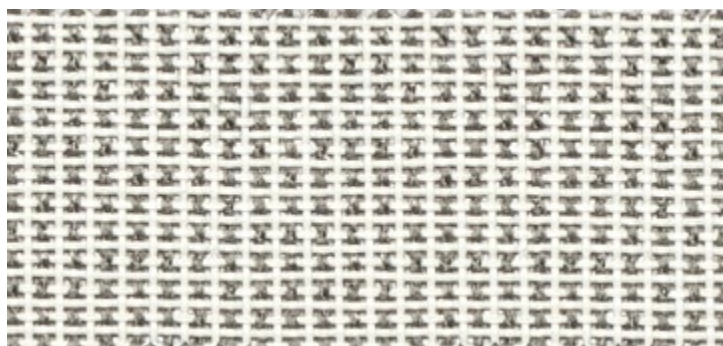
X040 Sabbia | Sand | Sable | Sand | Arena | Песочный



X035 Nero | Black | Noir | Schwarz | Negro | Черный

# SOFT TEXPLAST

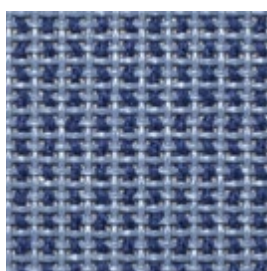
SOFT TEXPLAST | SOFT TEXPLAST | SOFT TEXPLAST | SOFT TEXPLAST | МЯГКИЙ ТЕКСПЛАСТ



X112 Moon Rock | Moon Rock | Moon Rock | Moon Rock | Moon Rock | Лунный камень



X111 Bianco | White | Blanc | Weiß | Blanco | белый



X113 Ceruleo | Cerulean blue | Bleu céruleen | Hell blau | Cerúleo | Лазурный



X114 Antracite | Anthracite | Anthracite | Anthrazit | Antracita | Антрацит

## TEXPLAST

TEXPLAST | TEXPLAST | TEXPLAST | TEXPLAST | ТЕКСПЛАСТ

### COMPOSIZIONE | COMPOSITION

75% PVC | PVC | PVC | PVC | PVC | ПВХ

25% poliestere | polyester | polyester | Polyester | poliéster | полиэстер

### SPESSORE | THICKNESS

1,15 mm | 0.045 inch

### CARICO DI ROTTURA | BREAKING LOAD

UNI EN ISO 1421

Ordito | Warp 275 Kg - 5 cm | 607 lbs - 1.97 inch

Trama | Weft 240 Kg - 5 cm | 530 lbs - 1.97 inch

### SOLIDITÀ DEL COLORE ALLO SFREGAMENTO | COLOUR FASTNESS TO RUBBING

EN ISO 105-x12:2003 - COL. 4165, 1101, 2102, 4154, 4014, 1195

5 - val. max

### RESISTENZA A FATICA | STRESS RESISTANT

EN 1728:2000 - EN 15373:2007 - livello 3° severo / 3°hard level

>200.000 cycles / 1.000 N

### RESISTENZA ALLA LUCE | LIGHT FASTNESS

EN 1728:2000 - EN 15373:2007 - livello 3° severo / 3°hard level

>200.000 cycles / 1.000 N

### RESISTENZA ALL'ABRASIONE | ABRASION RESISTANCE

Martindale EN ISO 12947-2:1998

>100.000 cycles



### METODO DI PULIZIA | CLEANING INSTRUCTIONS

Per la pulizia utilizzare un panno di cotone umido d'acqua.

*For cleaning, use a soft damp cloth and gentle detergent diluted with water.*

## SOFT TEXPLAST

SOFT TEXPLAST | SOFT TEXPLAST | SOFT TEXPLAST | SOFT TEXPLAST | МЯГКИЙ ТЕКСПЛАСТ

### COMPOSIZIONE | COMPOSITION

60% polivinile

40% poliestere | polyester | polyester | Polyester | poliéster | полиэстер

### SPESSORE | THICKNESS

1,3 mm | 0.51 inch

### CARICO DI ROTTURA | BREAKING LOAD

Ordito | Warp 220 Kg - 5 cm | 486 lbs - 1.97 inch

Trama | Weft 180 Kg - 5 cm | 398 lbs - 1.97 inch



### METODO DI PULIZIA | CLEANING INSTRUCTIONS

Per la pulizia utilizzare un panno di cotone umido d'acqua.

*For cleaning, use a soft damp cloth and gentle detergent diluted with water.*

## TESSUTO TECNICO

TECHNICAL FABRIC | TESSU TECHNIQUE | ENGINEERING STOFF | TEJIDO TÉCNICO | ТЕХНИЧЕСКАЯ ТКАНЬ



**TT004** Antracite | Anthracite | Anthracite | Anthrazit | Antracita | Антрацит



**TT001** Sabbia | Sand | Sable | Sand |  
Arena | Песочный



**TT002** Fango | Mud | Vase |  
Schlammfarbig | Barro |  
Серо-коричневый

## TESSUTO DECÒ

FABRIC DECÒ | TISSU DECÒ | STOFF DECÒ | TEJIDO DECÒ | ТКАНЬ DECÒ



**TED01** Chicco di Riso Perla Grigio | Grey Pearl Rice Grain | Riz Perle Gris |  
Reis Korn Perle Grau | Grano de Arroz Gris Perla | зерно риса Серый-жемуг



## TESSUTO TECNICO

TECHNICAL FABRIC | TESSU TECHNIQUE | ENGINEERING STOFF | TEJIDO TÉCNICO | ТЕХНИЧЕСКАЯ ТКАНЬ

### COMPOSIZIONE | COMPOSITION

60% PVC | PVC | PVC | PVC | PVC | ПВХ

40% poliestere | polyester | polyester | Polyester | poliéster | полиэстер



### METODO DI PULIZIA | CLEANING INSTRUCTIONS

Per la pulizia utilizzare un panno di cotone umido d'acqua.

*For cleaning, use a soft damp cloth and gentle detergent diluted with water.*

## TESSUTO DECÒ

FABRIC DECÒ | TISSU DECÒ | STOFF DECÒ | TEJIDO DECÒ | ТКАНЬ DECÒ

### COMPOSIZIONE | COMPOSITION

46% viscosa-viscose-viscose-Viskose-viscosa-вискоза

30% cotone-cotton-coton-Baumwolle-algodón-хлопок

24% poliestere-polyester-polyester-Polyester-poliéster-полиэфир

### SIMBOLOGIA - LYST OF SYMBOLS



### ALTEZZA / WIDTH

140 cm | 55.1 inches

### SOLIDITA' DEL COLORE ALLA LUCE | COLOUR FASTNESS TO LIGHT

UNI EN ISO 105 B02

5/8

### SOLIDITA' DEL COLORE ALLO SFREGAMENTO SECCO | COLOUR FASTNESS TO DRY RUBBING

UNI EN ISO 105 - X12

4/5

### SOLIDITA' DEL COLORE ALLO SFREGAMENTO UMIDO | COLOUR FASTNESS TO WET RUBBING

UNI EN ISO 105 - X12

3-4/5

### SOLIDITA' DEL COLORE ALL'ABRASIONE | COLOUR FASTNESS TO ABRASION

UNI EN ISO 12947-2

3-4/5

### SOLIDITA' DEL COLORE AL LAVAGGIO A SECCO | COLOUR FASTNESS TO DRY CLEANING

UNI EN ISO 105 D01

4/5

### RESTRINGIMENTO AL LAVAGGIO A SECCO | SHRINKAGE DRY

ordito/warp 1,0%

trama/weft 1.0%

### RESISTENZA AL PILLING | PILLING RESISTANCE

UNI EN ISO 12945-2

4/5

### RESISTENZA ALL'ABRASIONE | ABRASION RESISTANCE

UNI EN ISO 12947-2

30.000 cicli/rubs



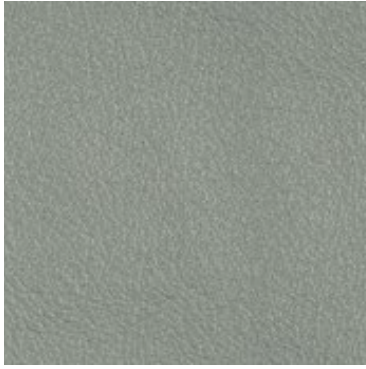
### METODO DI PULIZIA | CLEANING INSTRUCTIONS

Per la pulizia utilizzare un panno di cotone umido d'acqua.

*For cleaning, use a soft damp cloth and gentle detergent diluted with water.*

# PELLE PREMIUM

PREMIUM NAPPA LEATHER | PEAU PREMIUM | LEDER PREMIUM | PIEL PREMIUM | КОЖА ПРЕМИУМ



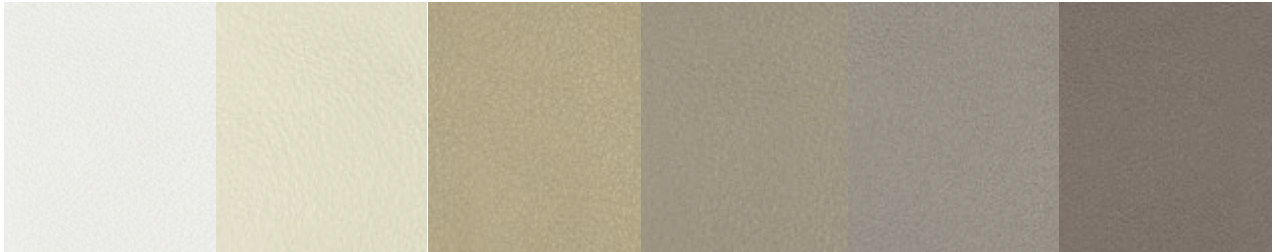
**PR06** Verde chiaro | Light green | Vert clair | Hell grün | Verde claro | Светло-Зеленый



**PR25** Mattone | Red Brick | Brique | Backstein | Ladrillo | Кирпичный



**PR26** Cotto | Burnt Clay | Orangé rouge | Terrakotta | Naranja quemado | Терракота



**PR01** Bianco | White | Blanc | Weiß | Blanco | Белый

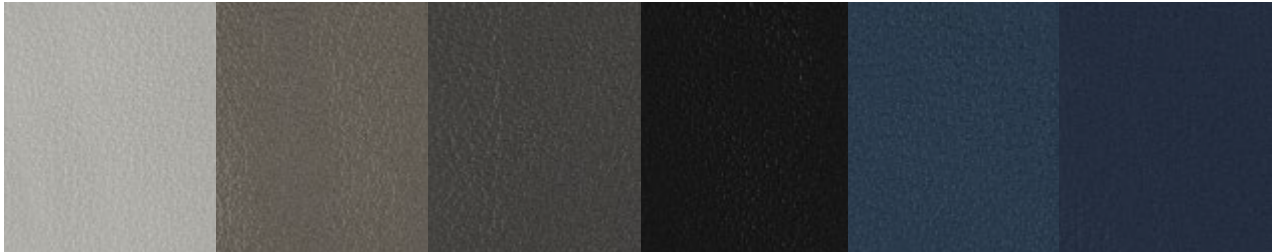
**PR02** Avorio | Ivory | Ivoire | Elfenbein | Marfil | Слоновая Кость

**PR03** Beige | Beige | Beige | Beige | Beige | Бежевый

**PR04** Sabbia | Sand | Sable | Sand | Arena | Песочный

**PR05** Grigio chiaro | Light grey | Gris clair | Hell grau | Gris claro | Светло-Серый

**PR07** Cipria | Old rose | Vieux rose | Alte rose | Rojo viejo | Пудра



**PR08** Ghiaccio | Ice | Glace | Eis | Hielo | Лед

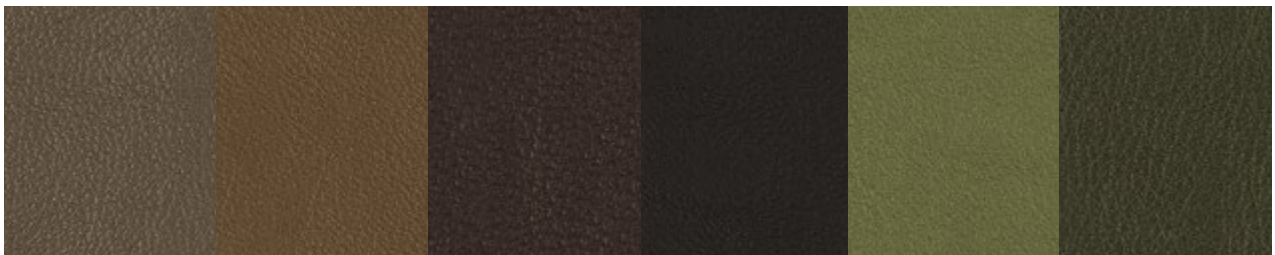
**PR09** Talpa | Grey | Gris | Grau | Gris | Серовато-Коричневый

**PR10** Antracite | Anthracite | Anthracite | Anthrazit | Antracita | Антрацит

**PR11** Nero | Black | Noir | Schwarz | Negro | Черный

**PR12** Avio | Air Force blue | Air Force bleu | Air Force blau | Azul RAF | Голубой авиационный

**PR13** Blu | Blue | Bleu | Blau | Azul | Синий



**PR14** Fango | Mud | Vase | Schlamm | Barro | Серо-Бежевый

**PR15** Nocciola | Hazelnut | Noisette | Haselnuß | Avellana | Орех

**PR16** Cioccolato | Chocolate | Chocolat | Schokolade | Chocolate | Шоколад

**PR17** Testa di moro | Dark brown | Marrón foncé | Dunkelbraun | Marrón oscuro | Темно-коричневый

**PR18** Verde oliva | Olive green | Vert olive | Olivgrün | Verde oliva | Зеленый оливковый

**PR19** Verdone | Dark green | Vert foncé | Dunkelgrün | Verde oscuro | Темно-зеленый



**PR20** Giallo | Yellow | Jaune | Gelb | Amarillo | Желтый

**PR21** Rosso | Red | Rouge | Rot | Rojo | Красный

**PR22** Rosso antico | Oxide Red | Rouge oxyde | Oxide Rot | Rojo óxido | Красный античный

**PR24** Amaranto | Amaranth | Amarante foncé | Amarant | Amaranto | Амарант

**PR23** Rosa antico | Dark pink | Rose foncé | Dunkelrose | Rosa antiguo | Состаренная роза

# PELLE PREMIUM

PREMIUM NAPPA LEATHER | PEAU PREMIUM | LEDER PREMIUM | PIEL PREMIUM | КОЖА ПРЕМИУМ

Pelle bovina mezzo fiore a grana naturale di spessore finito 0,9 - 1,1 mm.  
Tintura passante; rifinitura con resine e pigmenti. Pelle con mano morbida, tatto ceroso e aspetto semiopaco.

*Bovine of European origin, lightly buffed natural grain, finished thickness 0,9 - 1,1 mm. (0.03 - 0.04 inch.)  
Through dyed; finishing with resins and pigments. Leather with a pigmented and protective coat,  
with a soft, waxy feel and semi-matt appearance.*

## **SOLIDITÀ DEL COLORE ALLO STROFINIO A SECCO @500 CICLI**

COLOUR FASTNESS TO RUBBING, DRY @500 CYCLES

UNI EN ISO 11640

≥4

scala dei grigi ISO 105-A02:1993 - grey scale ISO 105-A02:1993

## **SOLIDITÀ DEL COLORE ALLO STROFINIO A UMIDO @250 CICLI**

COLOUR FASTNESS TO WET RUBBING @250 CYCLES

UNI EN ISO 11640

≥4

scala dei grigi ISO 105-A02:1993 - grey scale ISO 105-A02:1993

## **SOLIDITÀ DEL COLORE ALLO STROFINIO A SUDORE @80 CICLI**

COLOUR FASTNESS TO RUBBING, PERSPIRATION @80 CYCLES

UNI EN ISO 11460-11641 (pH8)

≥4

scala dei grigi ISO 105-A02:1993 - grey scale ISO 105-A02:1993

## **RESISTENZA ALLE FLESSIONI A SECCO @50.000 CICLI**

FLEX RESISTANCE, DRY @50.000 CYCLES

UNI EN ISO 5402

Nessun danno - No damage

## **ADESIONE A SECCO | ADHESION OF FINISH, DRY**

UNI EN ISO 11644

≥2

## **SOLIDITÀ DEL COLORE ALLA LUCE ARTIFICIALE. ENERGIA DI ESPOSIZIONE 16.000 kj/m.**

COLOUR FASTNESS TO ARTIFICIAL LIGHT. EXPOSITION ENERGY 16.000 kj/m.

UNI EN ISO 105B02 (MET.5)

≥5

scala dei blu ISO 105-B02:1994§4.1.1 - blue scale ISO 105-B02:1994§4.1.1



## **RESISTENZA ALLA SIGARETTA E ALLA PICCOLA FIAMMA**

(questa norma si riferisce esclusivamente alla combinazione pelle/imbottitura)

## **FIRE SAFETY - BURNING BEHAVIOUR CIGARETTES AND MATCH FLAME**

(this norm refers exclusively to the combination leather and padding)

BS 5852:1979 Superato - Pass

BS EN 1021 - 1 - 2:2006 Superato - Pass



## **METODO DI PULIZIA E MANUTENZIONE**

Spolverare regolarmente la pelle con un panno morbido ed asciutto.

Eventuali macchie si possono eliminare usando un panno inumidito con acqua e sapone neutro.

Asciugare immediatamente dopo il trattamento.

Non strofinare, ma tamponare delicatamente dai bordi al centro della macchia.

Evitare la luce diretta del sole.

Evitare l'esposizione a fonti di calore.

## **CLEANING AND MAINTENANCE INSTRUCTIONS**

*Dust regularly with a soft and dry cloth.*

*Spots can be washed off using a lightly damp cloth with mild soap.*

*Dry immediately after the treatment.*

*Do not rub. Use a circular motion working toward the centre of the stain.*

*Avoid placing leather near direct sun.*

*Keep the leather away from heat sources.*



## **RICICLABILE | RECYCLABLE**

# CUOIO

HIDE LEATHER | CUIR | KERNLEDER | CUERO | ЖЕСТКАЯ КОЖА



**Q429** Bianco | White | Blanc | Weiß | Blanco | белый



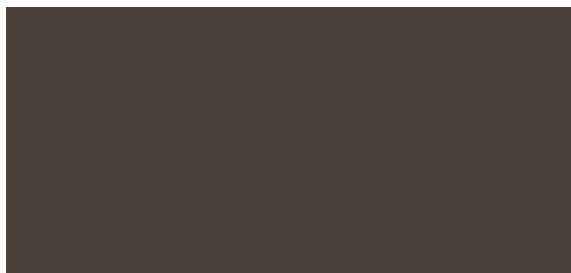
**Q239/Q406** Avorio | Ivory | Ivoire | Elfenbeinfarbe | Marfil | Слоновая кость



**Q408** Sabbia | Sand | Sable | Sand | Arena | Песочный



**Q257/Q437** Fango | Mud | Vase | Schlammfarbig | Barro | Серо-коричневый



**Q259/Q439** Cioccolato | Chocolate | Chocolat | Schokolade | Chocolate | Шоколад



**Q235/Q403** Testa di moro | Dark brown | Marron foncé | Dunkelbraun | Marrón oscuro | Темно-коричневый



**Q232/Q401** Bordeaux | Bordeaux | Bordeaux | Bordeaux rot | Burdeos | Бордо



**Q258/Q438** Granata | Brown red | Rouge brun | Braunrot | Rojo pardo | Красный гранат



**Q238/Q405** Rosso | Red | Rouge | Rot | Rojo | Красный



**Q032/Q504** Bulgaro | Russian | Russian | Russisch rot | Búlgaro | Красная юфта

# CUOIO

HIDE LEATHER | CUIR | KERNLEDER | CUERO | ЖЕСТКАЯ КОЖА

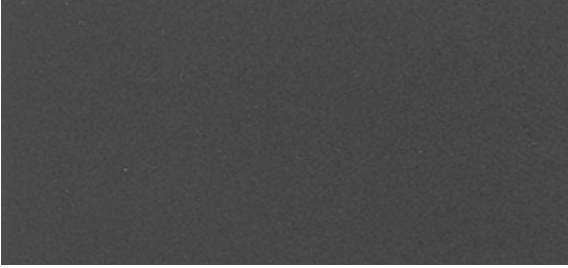
BONTEPI  
CASA



**Q256/Q436** Azzurro polvere | Blue grey | Gris bleu | Blau grau | Azul gris | Серо-голубой



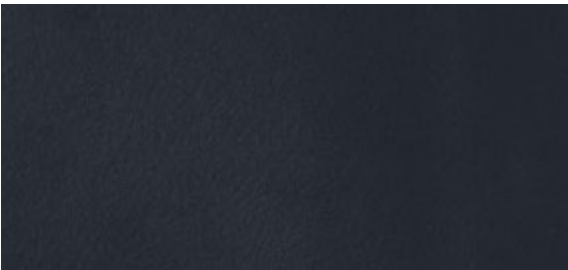
**Q255/Q435** Grigio chiaro | Light grey | Gris clair | Hell grau | Gris claro | Светло-Серый



**Q410** Antracite | Anthracite | Anthracite | Anthrazit | Antracita | Антрацит



**Q230/Q400** Nero | Black | Noir | Schwarz | Negro | Черный



**Q260/Q440** Blu Indaco | Blue | Bleu | Blau | Azul | Синий Индиго

CUOIO

11<sup>BIS</sup>

# CUOIO

HIDE LEATHER | CUIR | KERNLEDER | CUERO | ЖЕСТКАЯ КОЖА

## COMPOSIZIONE | COMPOSITION

100% pelli di origine bovina conciate al cromo | leather of bovine origins chrome tanned |  
peaux d'origine bovine tannées au chrome | Rindsleder Chrom gegerbt | pieles de origen bovino  
curtidas al cromo | кожа коровы, обработанная путем хромового дубления

## SPESSORE | THICKNESS

1,8 mm - 2 mm | 0.007 inch - 0.008 inch

## CARATTERISTICHE | CHARACTERISTIC

Grana liscia - Smooth grain



## METODO DI PULIZIA E MANUTENZIONE

Spolverare regolarmente la pelle con un panno morbido ed asciutto.  
Eventuali macchie si possono eliminare usando un panno inumidito con acqua e sapone neutro.  
Asciugare immediatamente dopo il trattamento.  
Non strofinare, ma tamponare delicatamente dai bordi al centro della macchia.  
Evitare la luce diretta del sole.  
Evitare l'esposizione a fonti di calore.

## CLEANING AND MAINTENANCE INSTRUCTIONS

*Dust regularly with a soft and dry cloth.*  
*Spots can be washed off using a lightly damp cloth with mild soap.*  
*Dry immediately after the treatment.*  
*Do not rub. Use a circular motion working toward the centre of the stain.*  
*Avoid placing leather near direct sun.*  
*Keep the leather away from heat sources.*



## RICICLABILE | RECYCLABLE

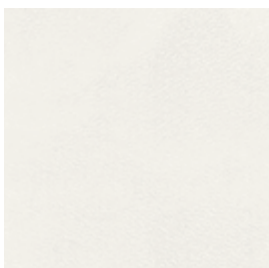
# FIBRA DI CUIOIO

LEATHER FIBRE | FIBRE DE CUIR | LEDERFASER | FIBRA DE CUERO | КОЖЕВЕННОЕ ВОЛОКНО

BONTEMPI  
CASA



**J056** Sabbia | Sand | Sable | Sand | Arena | Песочный



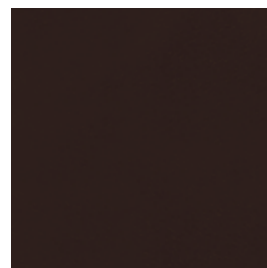
**J051** Bianco | White | Blanc | Weiß | Blanco | Белый



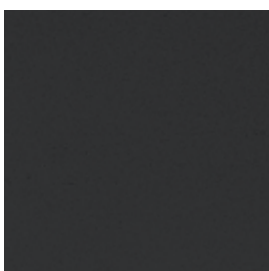
**J052** Avorio | Ivory | Ivoire | Elfenbeinfarbe | Marfil | Слоновая кость



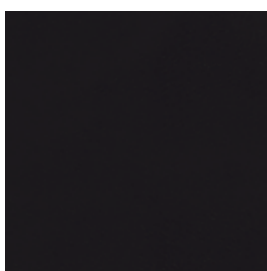
**J053** Rosso | Red | Rouge | Rot | Rojo | Красный



**J054/J050** Testa di moro | Dark brown | Marron foncé | Dunkelbraun | Marrón oscuro | Темно-коричневый



**J059** Antracite | Anthracite | Anthracite | Anthrazit | Antracita | Антрацит



**J055** Nero | Black | Noir | Schwarz | Negro | Черный

# FIBRA DI CUIOIO

LEATHER FIBRE | FIBRE DE CUIR | LEDERFASER | FIBRA DE CUERO | КОЖЕВЕННОЕ ВОЛОКНО

## COMPOSIZIONE | COMPOSITION

98% naturale | natural | natural | natural | natural | натуральная

2% agglomerato di ritagli di concia | agglomerated tanned cutting | ensemble de morceaux de tannage | Gerben Abschnitt gegepresst | aglomerado de virutas de curtido | агломерат обрезков дубления

## SPESSORE | THICKNESS

1,4 mm - 2 mm | 0.005 inch - 0.008 inch

## CARATTERISTICHE | CHARACTERISTIC

Stampa liscia effetto cuoietto. Il prodotto subisce nel tempo un naturale e graduale invecchiamento.

*Smooth printing with leather effect, the product is subject to natural and gradual ageing over the time.*



## METODO DI PULIZIA E MANUTENZIONE

Per la pulizia utilizzare un panno di cotone umido d'acqua.

Teme l'umidità. Evitare la luce diretta del sole.

## CLEANING AND MAINTENANCE INSTRUCTIONS

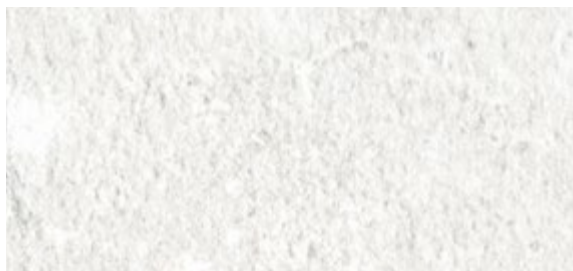
*For cleaning, use a soft damp cloth and gentle detergent diluted with water.*

*Avoid humidity. Avoid direct sunlight.*

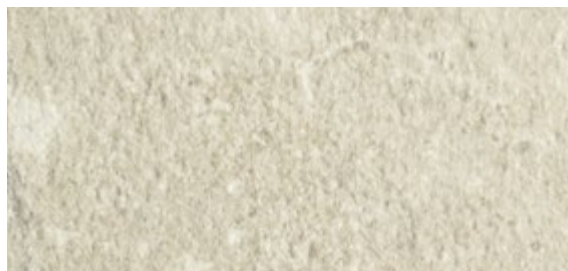


## UNICOLOR ANTIGRAFFIO

SCRATCH-RESISTANT UNICOLOR | UNICOLOR ANTI-RAYURES | KRATZFESTIG UNICOLOR | UNICOLOR ANTI ARAÑAZOS | UNICOLOR УСТОЙЧИВЫЙ К ЦАРАПИНАМ



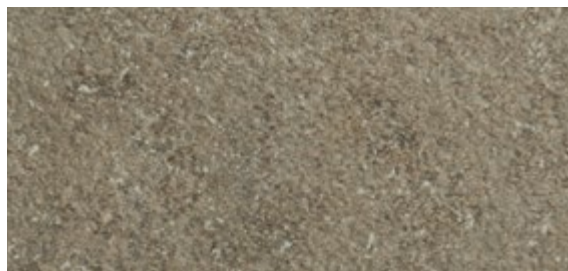
**D007** Bianco | White | Blanc | Weiß | Blanco | белый



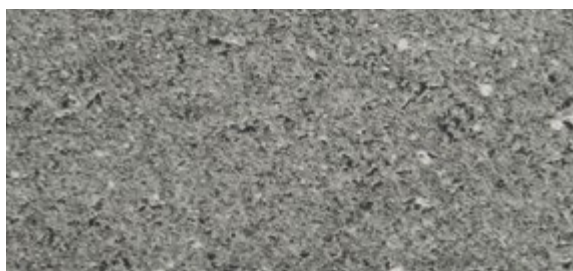
**D004** Pietra di Nanto | Nanto's stone | Pierre de Nanto | Nanto Stein | Piedra de Nanto | Камень nanto



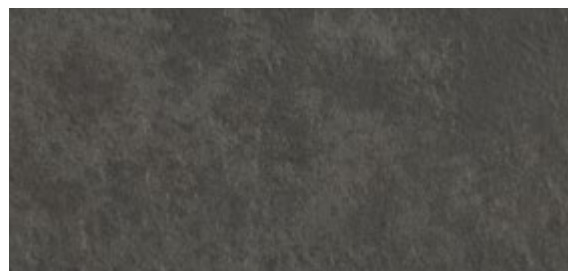
**D008** Botticino | Botticino's stone | Pierre de Botticino | Botticino Stein | Piedra Botticino | Камень Botticino



**D005** Porfido | Porphyru | Porphyre | Porphyr | Porfido | Порфир



**D006** Pietra lavica | Lava stone | Pierre de Lave | Lava Stein | Piedra Lavica | Лавовый камень



**D003** Brown stone | Brown stone | Brown stone | Brauner Stein | Piedra Marrón | Коричневый камень

## MELAMINICO

MELAMINE | MÉLAMINE | MELAMIN | MELAMINA | МЕЛАМИН



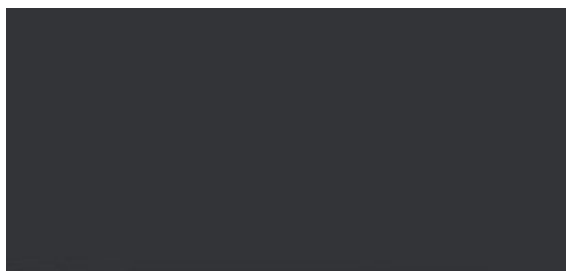
**L072** Alluminio | Aluminium | Aluminium | Aluminium | Aluminio | Алюминий



**L043** Bianco | White | Blanc | Weiß | Blanco | белый



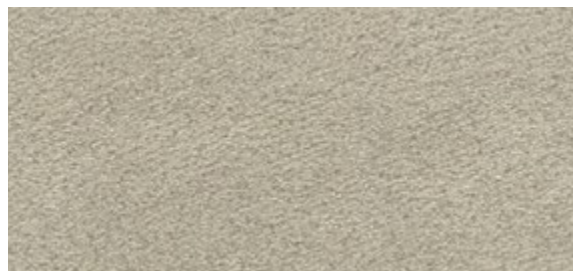
**L044** Sabbia | Sand | Sable | Sand | Arena | Песочный



**L045** Antracite | Anthracite | Anthracite | Anthrazit | Antracita | Антрацит

## MELAMINICO MATERICO

MELAMINE | MÉLAMINE | MELAMIN | MELAMINA | МЕЛАМИН



**L058** Cemento sabbia | Concrete sand | Béton sable | Zement sand | Cemento arena | цемент песок



**L059** Cemento talpa | Concrete grey | Béton taupe | Zement grau | Cemento gris topo | цемент крог



**L055** Canyon oak | Canyon oak | Chêne Canyon | Eiche Canyon | Roble canyon | Дуб каньон



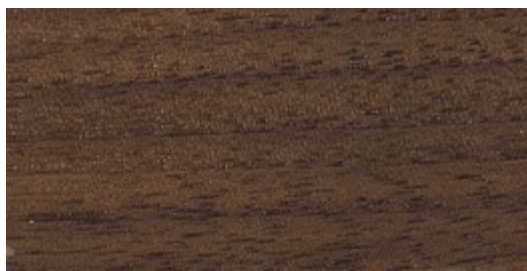
**L054** Cemento naturale | Natural concrete | Béton naturel | Zement natur | Cemento natural | Цемент натуральный

LEGNO: MASSELLO | MASSELLATO | IMPIALLACCIATO | LACCATO

WOODS: solid/veener with solid wood edge/veener/lacquered | BOIS: massif/plaqué avec bords en bois massif/plaqué/laqué | HOLZ: Massivholz/furniert mit massiv Holz Rand/furniert/lackiert | MADERA: maciza/chapada con cantos en madera maciza/chapada/lacada | ДЕРЕВО: массив/шпон с краями из массива/шпон/лакированное



**L109** Rovere naturale massello | Natural oak solid wood | Bois massif Chêne naturel | Massivholz Eiche natur | Roble natural macizo | Массив из натурального дуба

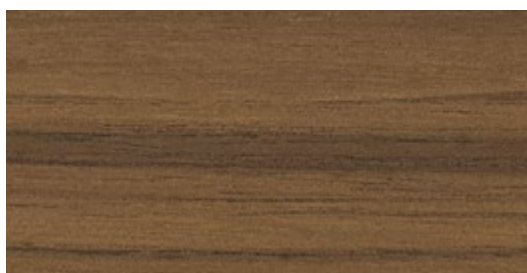


**L006** Noce massello | Walnut solid wood | Bois massif Noyer | Nogal macizo | Massiv Nussbaum | Массив из ореха



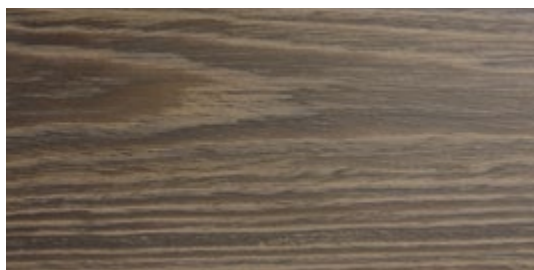
**L009** Rovere naturale impiallacciato | Natural oak veneer | Chêne naturel plaqué | Eiche Natur furniert | Roble natural chapado | Шпон из натурального дуба

**L209** Rovere naturale massellato | Natural oak veneer with solid wood edge | Chêne naturel plaqué avec bords en bois massif | Eiche Natur furniert mit massiv Rand | Roble natural chapado con cantos de madera maciza | Шпон из натурального дуба с краями из массива



**L036** Noce impiallacciato | Walnut veneer | Noyer plaqué | Nußbaum furniert | Nogal chapado | Шпон Орех

**L206** Noce Massellato | Walnut veneer with solid wood edge | Noyer plaqué avec bords en bois massif | Nussbaum furniert mit massiv Rand | Nogal chapado con cantos de madera maciza | Шпон Ореха с краями из массива



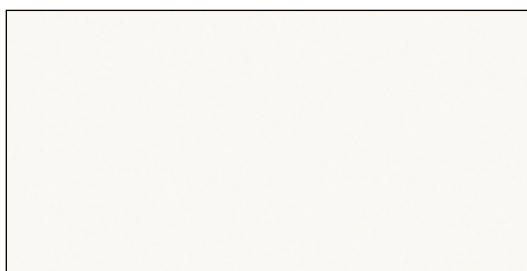
**L008** Olmo impiallacciato | Elm veneer | Orme plaqué | Ulme furniert | Olmo chapado | Шпон из вяза



**L002** Rovere Spessart impiallacciato | Spessart oak veneer | Chêne Spessart plaqué | Eiche Spessart furniert | Roble Spessart chapado | Шпон из дуба Spessart



**L038/L110** Rovere carbone impiallacciato | Charcoal oak veneer | Chêne fusain plaqué | Eiche Kohle furniert | Roble carbón chapado | Шпон дуба, уголь



**L079** Bianco | White | Blanc | Weiß | Blanco | Белый



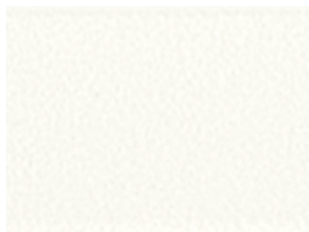
**L084** Sabbia | Sand | Sable | Sand | Arena | Песочный



**L087** Antracite | Anthracite | Anthracite | Anthrazit | Antracita | Антрацит

# METALLO

METAL | MÉTAUX | METALLE | METAL | МЕТАЛЛЫ



**M306** Bianco | White | Blanc | Weiß |  
Blanco | Белый



**M312** Sabbia | Sand | Sable | Sand | Arena |  
Песочный



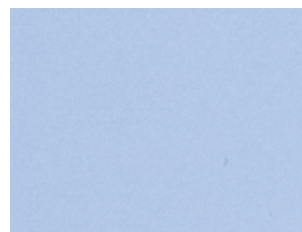
**M317** Cipria | Old Rose | Vieux Rose |  
Alte Rose | Rojo viejo | Пудра



**M314** Giallo | Yellow | Jaune | Gelb |  
Amarillo | Желтый



**M319** Verde chiaro | Light green | Vert clair |  
Hell grün | Verde claro |  
Светло-зеленый



**M318** Celeste | Light blue | Bleu clair |  
Hell blau | Celeste | Лазурный



**M316** Blu | Blue | Bleu | Blau | Azul |  
Синий



**M315** Rosso | Red | Rouge | Rot | Rojo |  
Красный



**M307** Testa di moro | Dark brown |  
Marron foncé | Dunkelbraun |  
Marrón | Темно-коричневый



**M097** Grigio chiaro | Light grey | Gris clair |  
Hell grau | Gris claro | Светло-серый



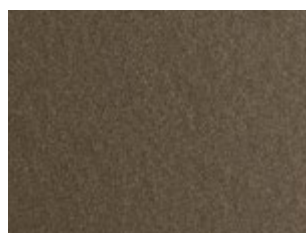
**M089** Alluminio | Aluminium | Aluminium |  
Aluminium | Aluminio | Алюминий



**M310** Antracite | Anthracite | Anthracite |  
Anthrazit | Antracita | Антрацит



**M055** Nero | Black | Noir | Schwarz |  
Negro | Черный



**M028** Ottone scuro | Dark brass |  
Laiton foncé | Dunkelmessing |  
Тёмная латунь

# METALLO

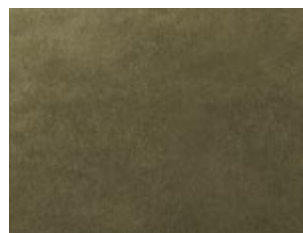
METAL | MÉTAUX | METALLE | METAL | МЕТАЛЛЫ



**M326** Argento naturale |  
Natural silver | Argent |  
Silber natur | Plata natural |  
Натуральное серебро



**M325** Oro | Gold | Or | Gold | Oro | Золото



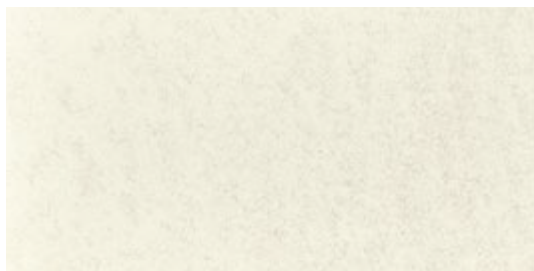
**M328** Ottone antico | Aged brass |  
Laiton vielli | Altmessing |  
Latón envejecido |  
Состаренная латунь



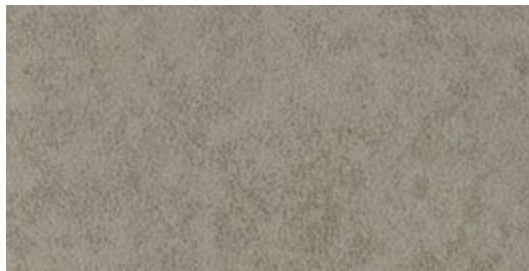
**M327** Nero profondo lucido | Glossy black |  
Noir brillant | Hochglänzend schwarz |  
Negro brillo | Глубокий черный  
глянцевый

# SUPERCERAMICA

SUPERCERAMIC | SUPERCERAMICA | SUPERKERAMIK | SUPERCERAMICA | СУПЕРКЕРАМИКА



**CR003/CR003A** Bianco | White | Blanc | Weiß | Blanco | белый



**CR001/CR001A** Sabbia | Sand | Sable | Sand | Arena | Песочный



**CR002/CR002A** Antracite | Anthracite | Anthracite | Anthrazit | Antracita |  
Антрацит

# SUPERCERAMICA

SUPERCERAMIC | SUPERCERAMICA | SUPERKERAMIK | SUPERCERAMICA | СУПЕРКЕРАМИКА



**INFINITO** | EVERLASTING



**IDRO/OLEO REPELENTE** | HYDRO OIL REPELLENT



**IGIENICO/ATOSSICO** | HYGIENIC/NON-TOXIC



**INALTERABILE AGLI ACIDI** | CHEMICAL RESISTANT



**ANTIGRAFFIO/ELEVATA DUREZZA**  
RESISTANT/BREAKAGE RESISTANT ANTI-RAYURES



**IGNIFUGO** | FIRE RETARDANT



**MINIMO SPESSORE MASSIMA RESISTENZA**  
MINIMUM THICKNESS MAXIMUM RESISTANCE



**ECO-COMPATIBILE** | ECO-FRIENDLY



**RICICLABILE** | RECYCLABLE

# SUPERMARMO

SUPERMARBLE | SUPERMARBRE | SUPERMARMOR | SUPERMÁRMOL | СУПЕРМАРОМ



**CM007/CM007A** Bianco Statuario Opaco | Matt White | Blanc Opaque |  
Matt Weiß | Blanco Opaco | Скульптурный белый  
матовый



**CM002/CM002A** Grigio Serena Opaco | Matt Grey | Gris Opaque |  
Matt Grau | Gris Opaco | Серый серена матовый



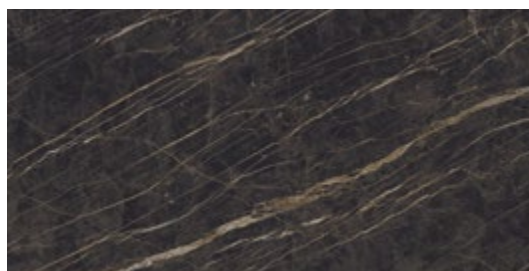
**CM004/CM004A** Onice Perla Lucido | Glossy Onice Perla |  
Onice Perla Brillant | Onyx Perle Hochglänzend |  
Onice Perla Brillo | Перламутровый Оникс  
глянцевый



**CM003/CM003A** Arabescato lucido | Glossy Arabescato |  
Arabescato brillant | Hochglänzend Arabescato |  
Arabescato brillo | Узорчатый глянцевый



**CM006/CM006A** Grigio Venato Bianco Lucido |  
Glossy Grey White Veined |  
Gris Veiné Blanc Brillant |  
Hochglänzend Grau, Weiß Geädert |  
Gris con Vetas Blancas Brillo |  
Супермармор Серый Глянцевый с Белыми  
прожилками



**CM005/CM005A** Noir Desir lucido | Glossy Noir Desir |  
Noir Desir brillo | Noir Desir hochglänzend |  
Cava Noir Desir brillo | Noir Desir глянцевый



Le seguenti immagini mostrano le possibili texture effetto marmo delle lastre intere utilizzate per la sezionatura dei piani dei tavoli e complementi della collezione Bontempi Casa, da intendersi a scopo puramente illustrativo. Bontempi Casa si riserva di utilizzare lastre con texture diverse per esigenze tecnico/produttive.

*The following images show the possible visual effect texture of the entire marble slabs used to section the Bontempi Casa table and coffee-table tops, intended for purely illustrative purposes. Bontempi Casa reserves the right to use slabs with different textures for technical/production needs.*

## SuperMarmo Bianco Statuario opaco

Matt White SuperMarble



CM007/CM007A



CM007/CM007A

## SuperMarmo Grigio Serena opaco

Matt Grey SuperMarble



CM002/CM002A

## SuperMarmo Onice Perla lucido

Glossy Onice Perla SuperMarble



CM004/CM004A



CM004/CM004A

**SuperMarmo Arabescato lucido**  
Glossy Arabescato SuperMarble

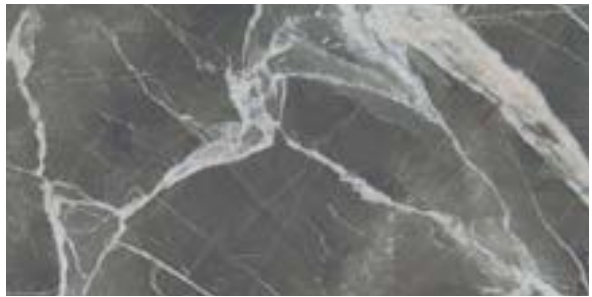


CM003/CM003A

**SuperMarmo Grigio Venato Bianco lucido**  
Glossy Grey White Veined SuperMarble



CM006/CM006A



CM006/CM006A

**SuperMarmo Noir Desir lucido**  
Glossy Noir Desir SuperMarble



CM005/CM005A



CM005/CM005A

# SUPERMARMO

SUPERMARBLE | SUPERMARBRE | SUPERMARMOR | SUPERMÁRMOL | СУПЕРМАРМО



**INFINITO**  
EVERLASTING



**IDRO/OLEO REPELENTE**  
HYDRO/OIL REPELLENT



**IGIENICO/ATOSSICO**  
HYGIENIC/NON-TOXIC



**INALTERABILE AGLI ACIDI**  
CHEMICAL RESISTANT



**ANTIGRAFFIO/ELEVATA DUREZZA**  
RESISTANT/BREAKAGE RESISTANT ANTI-RAYURES



**IGNIFUGO**  
FIRE RETARDANT



**MINIMO SPESSORE MASSIMA RESISTENZA**  
MINIMUM THICKNESS MAXIMUM RESISTANCE



**ECO-COMPATIBILE**  
ECO-FRIENDLY



**RICICLABILE**  
RECYCLABLE

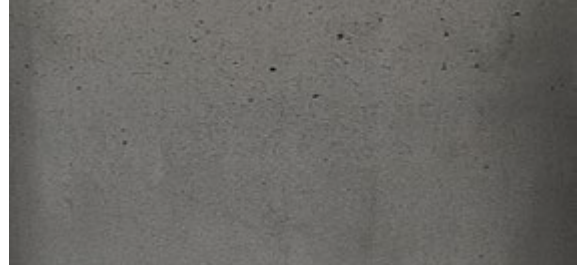
# CEMENTO

CONCRETE | BÉTON | ZEMENT | CEMENTO | ЦЕМЕНТ

BONTEMPI  
CASA



**PC001** Cemento bianco | White concrete | Béton blanc | Zement weiß |  
Cemento blanco | Цемент белый



**PC002** Cemento | Concrete | Béton | Zement | Cemento | Цемент



**PC003** Cemento antracite | Anthracite concrete | Béton anthracite |  
Zement anthrazit | Cemento antracita | Цемент антрацит



**PC004** Cemento ottone | Brass Concrete | Beton laiton | Zement messing |  
Cemento latón | Цемент латунь

La finitura Cemento è realizzata attraverso una lavorazione artigianale per garantirne valore ed unicità. Piani e basamenti realizzati in questa finitura possono pertanto presentare differenze nella tonalità del colore e nella matericità della superficie rispetto al campione mostrato in questa scheda.

*The Concrete finish is made through an artisan manufacturing in order to guarantee its value and uniqueness. Tops and bases in this finish may differ in the surface colour tone and material texture if compared to the sample shown in this sample sheet.*

# CEMENTO

CONCRETE | BÉTON | ZEMENT | CEMENTO | ЦЕМЕНТ

I piani in cemento Bontempi Casa sono realizzati con un materiale innovativo composto da resine cementizie speciali atossiche e inerti quarziferi. La composizione del materiale permette di ottenere il caratteristico effetto naturale ultra opaco, mentre l'applicazione di una finitura poliuretanica bicomponente trasparente ultra opaca ne garantisce l'impermeabilità alla penetrazione dei liquidi più aggressivi.  
*The Bontempi Casa concrete tops are created with an innovative material made of special non-toxic cementitious resins with quartz aggregates. The composition of the material allows to obtain the peculiar ultra-matt natural effect. The application of a transparent, matt, two-component polyurethane finish prevents liquids penetration.*



## METODO DI PULIZIA E MANUTENZIONE

Per la pulizia ordinaria, utilizzare un panno umido e detergente neutro e asciugare.

Nel caso in cui il piano venga a contatto con agenti macchianti quali olio, vino rosso e succo di limone e simili, è indispensabile rimuoverli immediatamente utilizzando un detergente neutro per evitare che penetrino nel materiale lasciando macchie o aloni.

Evitare assolutamente l'uso di alcool etilico o di detersivi contenenti anche in piccole quantità, acetone, trielina e solventi in generale per evitare di opacizzare la superficie.

Verificare che il detergente utilizzato non contenga olio o cera e non lasci patine lucide.

## CLEANING AND MAINTENANCE INSTRUCTIONS

*For regular cleaning, use a soft cloth soaked with warm water and neutral cleanser (PH 6/7).*

*Remove with a damp cloth and dry.*

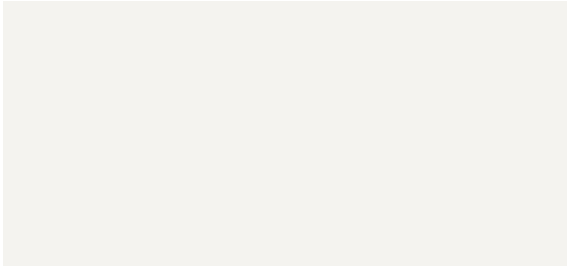
*If the top comes into contact with stained agents such as oil, red wine, coffee, lemon juice, vinegar, coca cola and similar, it is recommended to remove them immediately in order to prevent them from penetrating into the material leaving stains.*

*Make sure the detergent used does not contain oil or wax and does not leave a polish coat.*

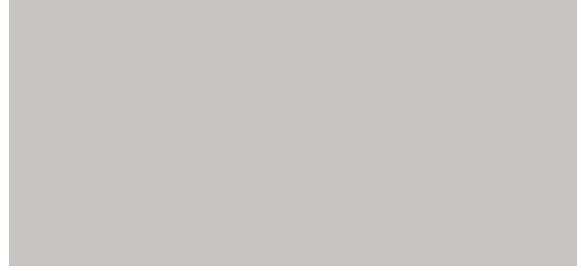
*Avoid using denatured alcohol or detergents containing bleach or solvents that may leave stains or make the surface opaque.*



ECOCOMPATIBILE | ECO-FRIENDLY



**Z031** Bianco | White | Blanc | Weiß | Blanco | Белый



**Z006** Grigio chiaro | Light grey | Gris clair | Hell grau | Gris claro | Светло-серый



**Z029** Sabbia | Sand | Sable | Sand | Arena | Песочный



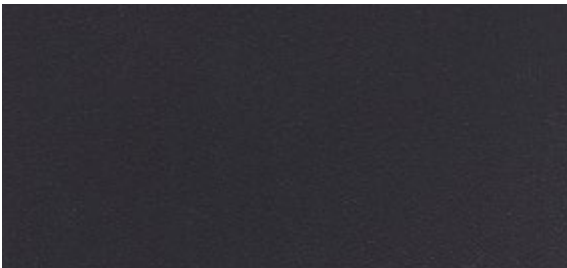
**Z009** Giallo senape | Mustard yellow | Moutarde | Senf | Amarillo mostaza | Желтая горчица



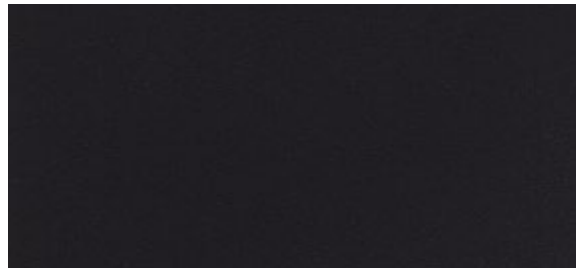
**Z008** Caramello | Caramel | Caramel | Karamell | Caramelo | Карамель



**Z007** Azzurro polvere | Dusty blue | Gris bleu | Puderblau | Azul polvo | Синий порошок



**Z039** Antracite | Anthracite | Anthracite | Anthrazit | Antracita | Антрацит



**Z038** Nero | Black | Noir | Schwarz | Negro | Черный  
**Z005** Nero laccato soft velvet | Soft touch black | Noir laqué soft touch | Schwarz soft velvet lackiert | Negro soft touch | Черный лакированный мягкий бархат

## LANA NATURALE PER PAD

NATURAL WOOL PAD FOR CHAIR | GALETTE POUR CHAISE  
EN LAINE NATURELLE | REINE SCHNURWOLLE FÜR PAD |  
LANA NATURAL PARA COJIN |  
НАТУРАЛЬНАЯ ШЕРСТЬ ДЛЯ ПОДУШКИ



**TPAD01** Rosso | Red | Rouge | Rot | Rojo | Красный



**TPAD02** Antracite | Anthracite | Anthracite | Anthrazit | Antracita | Антрацит



**TPAD03** Grigio chiaro | Light grey | Gris clair | Hell grau | Gris claro | Светло-серый

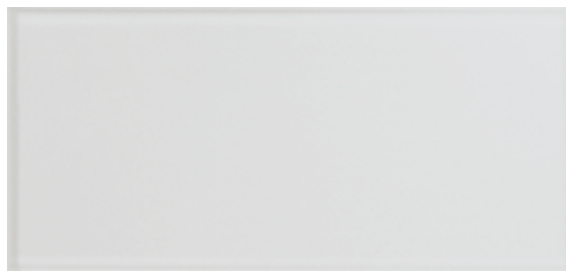
N.B.: I campioni colore sono da considerarsi indicativi per ciascun prodotto in quanto il colore può subire variazioni in funzione degli spessori e della composizione dei materiali utilizzati. | Use card as example, colours may change according to materials used.

# CRISTALLO

GLASS | VERRE | GLAS | CRISTAL | СТЕКЛО



**C150** Extrawhite lucido | Glossy Extrawhite | Extrawhite brillant | Extrawhite | Extrawhite | Экстра-белый глянцевый



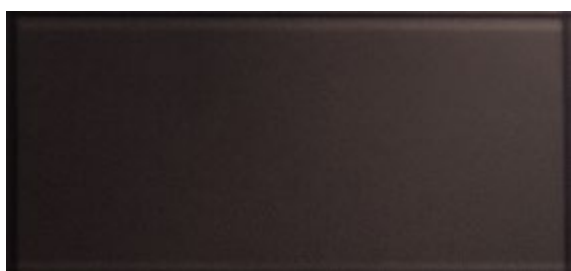
**C180S** Velvet antigraffio bianco opaco | Velvet matt anti-scratch white | Velvet anti-rayures blanc opaque | Kratzfestig velvet weiß matt | Velvet anti-arañazos blanco opaco | Вельвет, устойчивый к царапинам, матовый белый



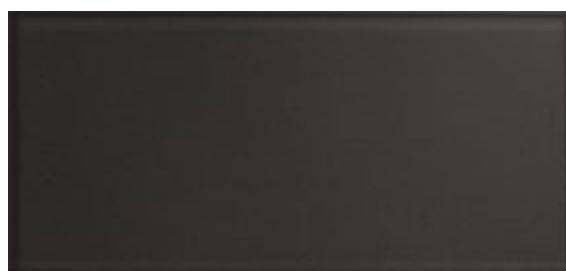
**C193** Laccato tortora lucido | Glossy dove grey lacquered | Laqué gris tourterelle brillant | Hochglänzend taubengrau lackiert | Lacado gris ceniciento brillo | Лакированный серо-бежевый глянцевый



**C181S** Velvet antigraffio tortora opaco | Velvet matt anti-scratch dove grey | Velvet anti-rayures gris tourterelle opaque | Kratzfestig velvet taubengrau matt | Velvet anti-arañazos gris ceniciento opaco | Вельвет, устойчивый к царапинам матовый серо-бежевый



**C192** Laccato testa di moro lucido | Glossy dark brown lacquered | Laqué marron foncé brillant | Hochglänzend dunkelbraun lackiert | Lacado marrón brillo | Лакированный темно-коричневый глянцевый



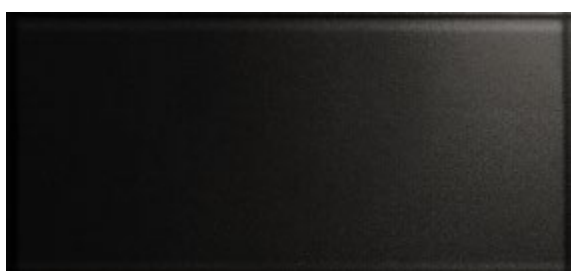
**C182S** Velvet antigraffio testa di moro opaco | Velvet matt anti-scratch dark brown | Velvet anti-rayures marron foncé opaque | Kratzfestig velvet dunkelbraun matt | Velvet anti-arañazos marrón oscuro opaco | Вельвет, устойчивый к царапинам, матовый темно-коричневый



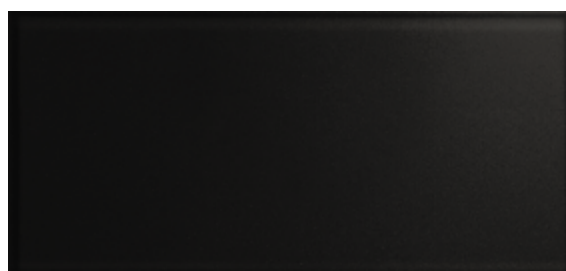
**C196** Laccato antracite lucido | Glossy anthracite lacquered | Laqué anthracite brillant | Hochglänzend anthrazit lackiert | Lacado antracita brillo | Лакированный антрацит глянцевый



**C183S** Velvet antigraffio antracite opaco | Velvet matt anti-scratch anthracite | Velvet anti-rayures anthracite opaque | Kratzfestig velvet anthrazit matt | Velvet anti-arañazos antracita opaco | Вельвет, устойчивый к царапинам, матовый антрацит



**C152** Laccato nero lucido | Glossy black lacquered | Laqué noir brillant | Hochglänzend schwarz lackiert | Lacado negro brillo | Лакированный черный глянцевый



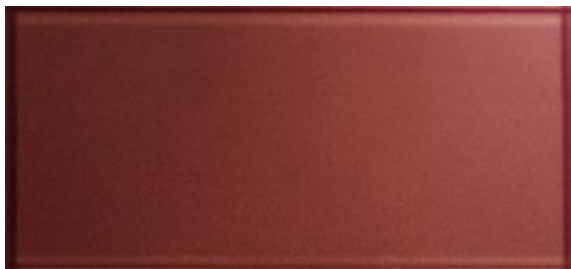
**C185S** Velvet antigraffio nero opaco | Velvet matt anti-scratch black | Velvet anti-rayures noir opaque | Kratzfestig velvet schwarz matt | Velvet anti-arañazos negro opaco | Вельвет, устойчивый к царапинам, матовый черный

N.B.: I campioni colore sono da considerarsi indicativi per ciascun prodotto in quanto il colore può subire variazioni in funzione degli spessori e della composizione dei materiali utilizzati. | Use card as example, colours may change according to materials used.

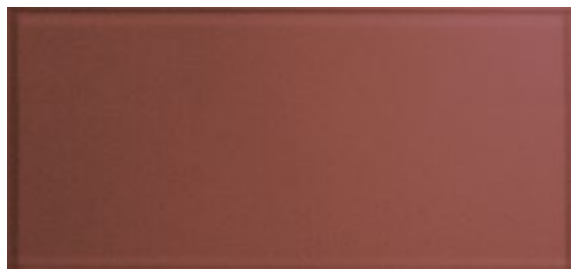
# CRISTALLO

GLASS | VERRE | GLAS | CRISTAL | СТЕКЛО

BONTEMPI  
CASA



**C160** Laccato ruggine lucido | Glossy rust lacquered | Oxyde brillant | Hochglänzend rost lackiert | Oxido brillo | Глянцевый лакированный ржавчина



**C160S** Velvet antigraffio ruggine opaco | Velvet matt anti-scratch rust lacquered | Velvet anti-rayures oxyde opaque | Velvet kratzfestig rost matt lackiert | Cristal velvet anti-arañazos óxido opaco | Вельвет, устойчивый к царапинам, матовый ржавчина



**C161** Laccato smeraldo lucido | Glossy emerald lacquered | Emeraude brillant | Hochglänzend smaragdgrün lackiert | Esmeralda brillo | Глянцевый лакированный изумруд



**C161S** Velvet antigraffio smeraldo opaco | Velvet matt anti-scratch emerald lacquered | Velvet anti-rayures émeraude opaque | Velvet kratzfestig smaragdgrün matt lackiert | Cristal velvet anti-arañazos esmeralda opaco | Вельвет, устойчивый к царапинам, матовый изумруд



**C166** Laccato grigio chiaro lucido | Glossy light grey lacquered | Gris clair brillant | Hochglänzend hell grau lackiert | Lacado gris claro brillo | Глянцевый лакированный светло-серый



**C186S** Velvet antigraffio grigio chiaro opaco | Velvet matt anti-scratch light grey lacquered | Velvet anti-rayures gris clair opaque | Velvet kratzfestig hell grau matt lackiert | Velvet anti-arañazos gris claro opaco | Вельвет, устойчивый к царапинам, матовый светло-серый



Il cristallo velvet antigraffio è caratterizzato dalla finitura opaca che lo rende caldo e piacevole al tatto generando un effetto seta, vellutato e morbido.

Il cristallo viene sottoposto ad uno speciale trattamento chimico fisico adoperato grazie ad una tecnologia di ultima generazione denominata 'corrosione dinamica' che rende più difficoltosa la formazione di possibili graffi solitamente più evidenti sulle superfici lisce.

*Anti scratch velvet glass is characterized from a matt finish that makes it warm and pleasant to touch, creating a "silk effect", soft and smooth.*

*The scratch-resistant glass surface is treated with a specific chemical treatment thanks to an ultimate technology called "dynamic corrosion" that allow smoothing of micro ridges generated by common etching. The smoothing of the ridges deters the appearance of scratches.*



#### **MORBIDEZZA AL TATTO | WARM AND PLEASANT TO TOUCH**



#### **ELEVATA RIPARABILITÀ DEI GRAFFI | SCRATCHES HIGH REPARABILITY**



#### **METODO DI PULIZIA E MANUTENZIONE**

Per la pulizia di questi piani si consiglia di intervenire con un panno morbido e schiuma attiva per vetri e cristalli.

Non spruzzare direttamente il prodotto sul piano ma sul panno.

Non usare prodotti oleosi, grassi e diluenti.

Nel caso in cui vengano versati sul piano liquidi particolarmente aggressivi o macchianti quali ad esempio: vino, coca-cola, succhi di frutta, aceto, limone etc... rimuovere immediatamente il liquido con un panno morbido e schiuma attiva per vetri e cristalli come precedentemente indicato.

L'azienda produttrice non sarà responsabile per danneggiamenti derivanti dall'utilizzo non corretto del prodotto o dalla pulizia effettuata con agenti smacchianti diversi da quelli indicati con le specifiche modalità.

#### **CLEANING AND MAINTENANCE INSTRUCTIONS**

*For daily cleaning, use a soft cloth dampened with an approved product for glass cleaning.*

*Do not spray the product directly on the glass top. Instead, spray the cloth and gently wipe the glass.*

*Do not use oily, greasy or thinner products.*

*In the event of an accidental spill of liquids such as wine, carbonated beverages, juices, vinegar, lemon and so on, clean the spill with the soft cloth dampened with the approved glass cleaner.*

*For a larger spill, absorb some of the liquid with a quality paper towel, then proceed with cleaning with the soft cloth.*

*Company will not be responsible for damages due to improper cleaning procedures.*

