

# lacquers



C1 total black



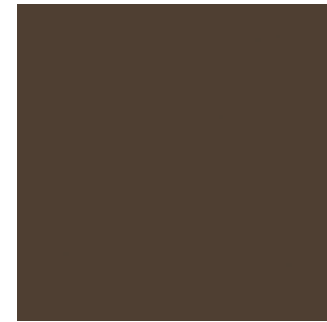
C20 midnight black



C6 dark olive gray



C21 olive gray



C27 earth brown



C15 gold yellow



C22 cherry red



C31 ruby red



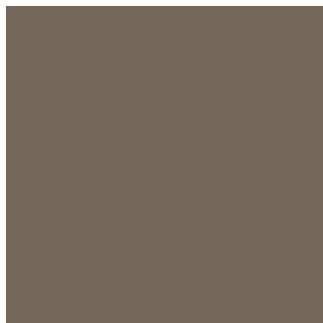
C32 purple



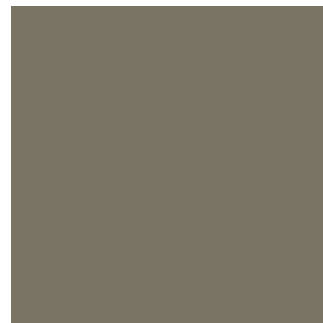
C29 light rosewood



C11 olive brown



C25 desert brown



C3 ash gray



C7 military green



C9 mint



C30 rosewood



C35 petrol green



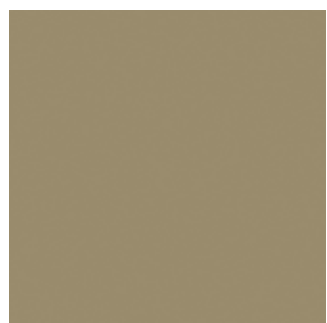
C36 tanned skin



C37 aubergine



C38 dark coral



C12 hazelnut



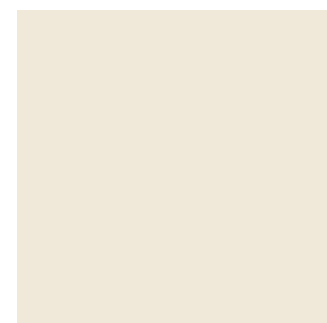
C26 nougat



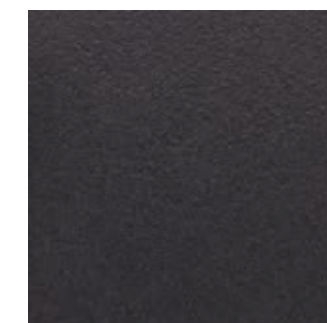
C13 light pistachio



C14 cream



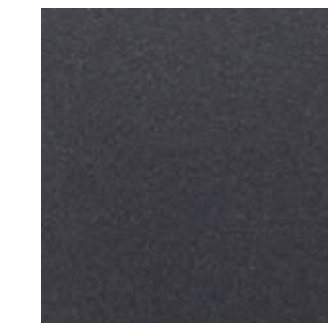
C5 powder



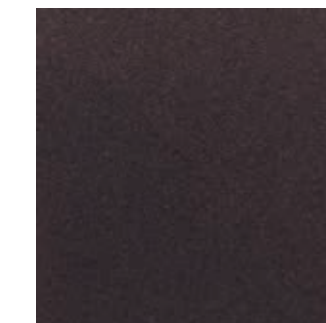
35825



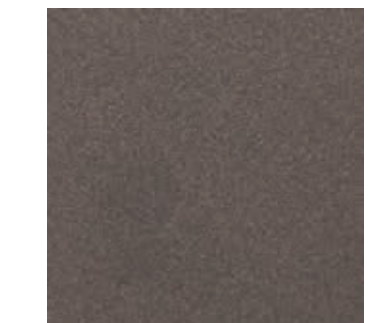
71946



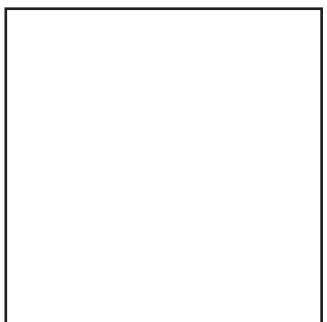
74546



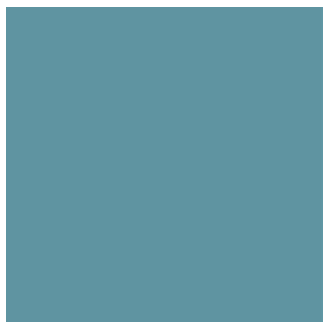
77566



88634



C24 white



C10 sea blue



C23 dark blue



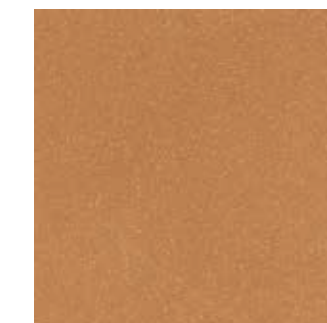
C19 orange



C33 mustard yellow



88674



47290

# metals

woods-cements-glasses

# woods



oak 11



oak 12



oak 13



oak 14



oak 15



american walnut 20



walnut canaletto



smoked eucalyptus



ethnic pattern

# cements



cement 1



cement 2



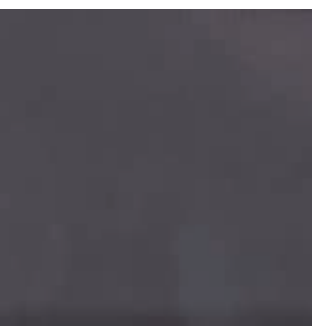
gl1: transparent



gl2: bronze



gl3: sanded



gl5: smoked

# glasses

marbles-maxfine marbles

# marbles



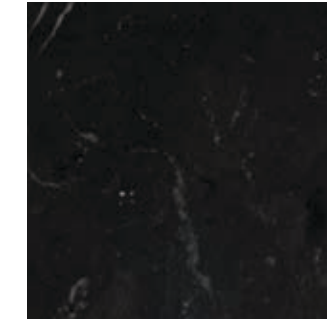
volakas



olympus grey



argus vein



nero marquina



bruno perla

# maxfine



arabescato



calacata



extra white



thasos



gaudi stone



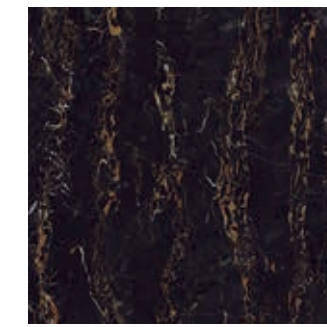
onice grigio



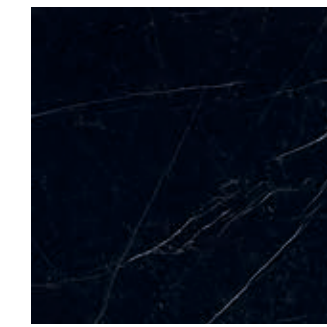
onice avorio



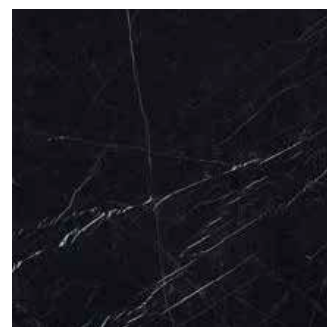
onice alabastrino



portoro



black marquina silky



black marquina  
glossy