

PELLIZZONI

CL

curried leather
cuoio ingrassato

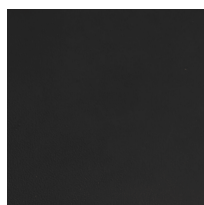
st
la
a
i
e
t
a
m

PELLIZZONI

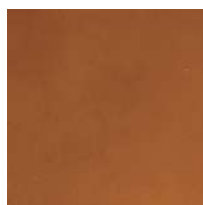
CL

curried leather

cuoio ingrassato



01 NERO



02 TAN

CL

curried leather

cuoio ingrassato

Curried leather is a material obtained by first quality bovine hides coming from UE member states and it's protected and promoted by the trademark "Pelle Conciata al Vegetale in Toscana". A leather tanned by working oils and greases that increase the flexibility. Leather is obtained by the butchering for feeding purposes; no bovine has been therefore killed only for furnishings consumerism.

average hide size: 1.6/2.0 mq

average thickness: 2.4/2.6 mm

weight: approx. 0.5 kg per mq

flammability: complies California Technical Bulletin 133

Il cuoio ingrassato è ottenuto dalle pelli bovine di prima qualità di provenienza da membri dell'UE, protetto e promosso dal consorzio "Pelle Conciata al Vegetale in Toscana". Una pelle conciata e lavorata con oli e grassi che ne aumentano la flessibilità. Il cuoio è ottenuto dalla macellazione avvenuta per scopi alimentari; non è stato abbattuto nessun bovino per il solo consumo di articoli di arredo.

dimensione media pelle: 1.6/ 2.0 mq

spessore medio: 2.4/ 2.6 mm

peso: circa 0.5 kg a mq

infiammabilità: rispetta il California Technical Bulletin 133

PELLIZZONI

CPF

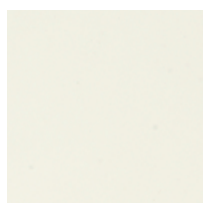
full grain leather
cuoio pieno fiore

PELLIZZONI

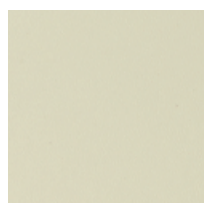
CPF

full grain leather

cuoio pieno fiore



20 BIANCO



80 LATTE



81 AVORIO



82 CREMA



73 CORDA



26 NATURALE



27 COLONIALE



72 COGNAC



87 BULGARO



51 GIRASOLE



55 LIMONE



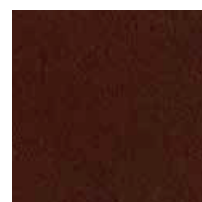
43 ARANCIO



21 ROSSO



32 BORDEAUX



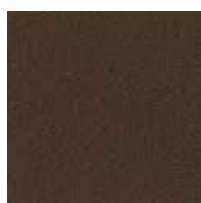
71 MOGANO



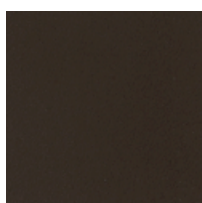
75 TORTORA



70 LIQUIRIZIA



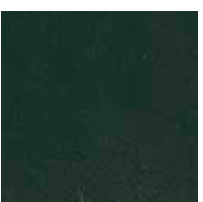
48 TERRA



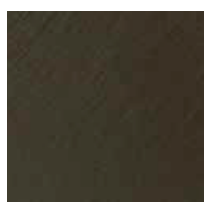
67 MORO



30 MOKA



85 BOTTIGLIA



84 OLIVA



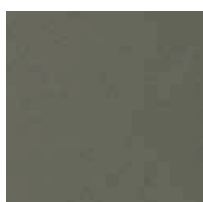
83 QUARZO



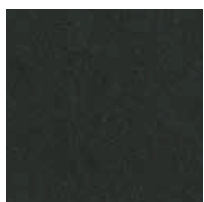
76 GRIGIO SETA



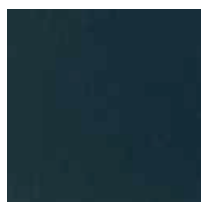
79 PAPIRO



77 ARDESIA



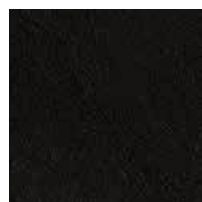
63 ANTRACITE



39 COBALTO



86 ZAFFIRO



25 NERO

CPF

full grain leather

cuoio pieno fiore

Full grain leather is a material obtained by first quality bovine hides protected and promoted by the trademark "Pelle Conciata al Vegetale in Toscana". During the tanning-phase only natural substances are used. Small veins and wrinkles on the surface prove its naturalness. Leather is obtained by the butchering for feeding purposes; no bovine has been therefore killed only for furnishings consumerism.

average hide size: 1.2/1.6 mq

average thickness: 2.5/2.8 mm

weight: approx. 0.5 kg per mq

flammability: complies California

Technical Bulletin 133

Il cuoio pieno fiore è ottenuto da pelli bovine di prima qualità, protetto e promosso dal consorzio "Pelle Conciata al Vegetale in Toscana". Nella fase di concia vengono utilizzate solo sostanze di origine vegetale. Piccole venature e grinze sulla superficie mostrano la naturalezza della pelle. Il cuoio è ottenuto dalla macellazione avvenuta per scopi alimentari; non è stato abbattuto nessun bovino per il solo consumo di articoli di arredo.

dimensione media pelle: 1.2/1.6 mq

spessore medio: 2.5/2.8 mm

peso: circa 0.5 kg a mq

infiammabilità: rispetta il

California Technical Bulletin 133

PELLIZZONI

CTT

contract leather

cuoio contract

st
la
a
i
e
t
a
m

PELLIZZONI

CTT

contract leather

cuoio contract



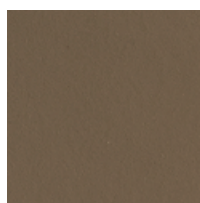
210 BIANCO



281 AVORIO



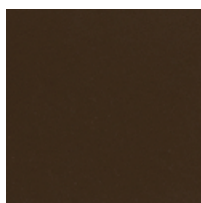
209 GHIACCIO



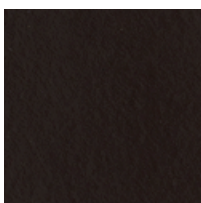
275 TORTORA



205 NOCCIOLA



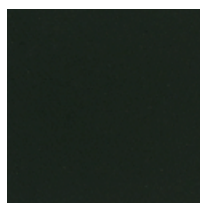
203 TERRA



201 MORO



263 ANTRACITE



285 BOTTIGLIA



202 BORDEAUX



287 BULGARO



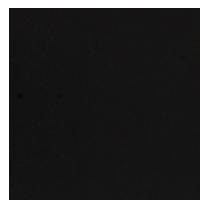
226 NATURALE



212 GIALLO



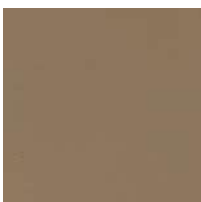
211 ROSSO



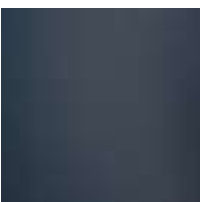
200 NERO



216 CARMELLO



217 SABBIA



213 BLU AVIO

CTT

contract leather

cuoio contract

Contract leather is a material obtained by the vegetable tanning of 100% bovine crust finished with water base polyurethane resins with nitro cellulose fixer. It's obtained by a chromium salts tanning and a pigment finishing. This material has a high resistance in the time. Leather is obtained by the butchering for feeding purposes. No bovine has been therefore killed only for furnishings consumerism.

average hide size: 1.6/2.0 mq
average thickness: 2.4/2.6 mm
weight: approx. 0.5 kg per mq
flammability: complies California Technical Bulletin 133

Il cuoio contract è un materiale ottenuto dalla concia mista al vegetale della crosta bovina rifinita con resine poliuretaniche a base acquosa con fissativo nitrocellulosico. È ottenuto da una concia di sali al cromo e rifinito a pigmento. Questo materiale ha un'ottima tenuta nel tempo. Il cuoio è ottenuto dalla macellazione avvenuta per scopi alimentari. Nessun bovino è stato abbattuto per il solo consumo di articoli di arredamento.

dimensione media pelle: 1.6/2.0 mq
spessore medio: 2.4/ 2.6 mm
peso: circa 0.5 kg a mq
infiammabilità: rispetta il California Technical Bulletin 133

PELLIZZONI

FE

felt

feltro

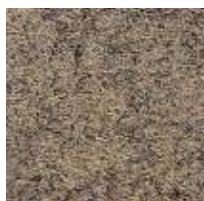
st
la
a
i
t
a
m

PELLIZZONI

FE felt feltro



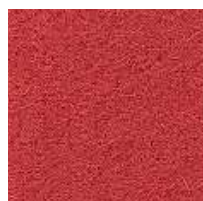
Z47 FAIRFIELD



Z86 ST ANDREWS



Z2R STANFORD



Z3D BARLBOROUGH



Z18 ORIEL



Z63 HANDCROSS



Z21 MAGDALENE



Z2T HOLYOKE



Z3E SCOTTSDALE



Z82 WESLEY



Z1F ULSTER



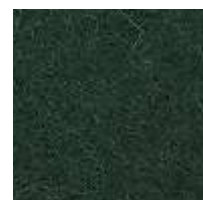
Z2W EYNESBURY



Z2X PENOLA



Z1L NEWPORT



Z1N CARDIFF



Z3A MONTCREST



Z2Y TYNDALE



Z2Z WOODCROFT



Z02 ASTON



Z3B ABERTAY



Z33 LATYMER



Z62 GLENALMOND



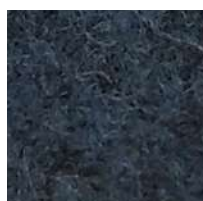
Z1V MANCHESTER



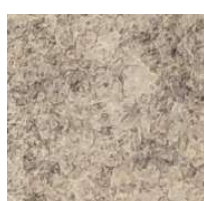
Z26 KNIGHTSBRIDGE



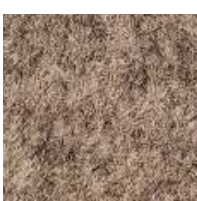
Z09 OXFORD



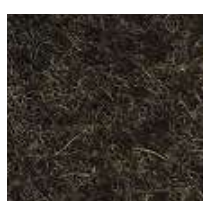
Z1W NEWCASTLE



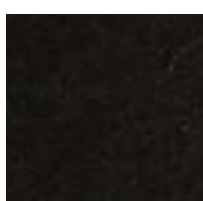
Z28 SILVERDALE



Z1E SURREY



Z35 BROMSGROVE



Z08 NAPIER

FE felt feltro

A classic pure new wool upholstery fabric. It is made from premium New Zealand lambswool, where responsible farming provides the highest quality raw material which is soft, clean and bright. The colour palette is an exciting mix of solids and mélanges, creating a versatile fabric.

Un classico tessuto in pura lana vergine. È realizzato in pregiata lana d'agnello della Nuova Zelanda che fornisce materia prima di alta qualità, morbida, pulita e luminosa. La tavolozza dei colori è un emozionante mix di tinte unite e melange, che creano un tessuto versatile.

Technical Information

Composition

100% Virgin Wool
Non metallic dyestuffs

Environmental

Rapidly renewable and compostable

Width

140 cm minimum

Weight

460g/m². ± 5% (645g/lin.m ±5%)

Abrasion Resistance*

Heavy duty / 10 year guarantee
independently certified to ≥ 50.000 Martindale cycles

Flammability

EN 1021 - 1 (cigarette)

EN 1021 - 2 (match)

BS 7176 Low Hazard

NF D 60-103, AM 18

UNI 9175 Classe 1 M

en 13501-1 Adhered Class D, s1, d0

ÖNORM B 3825 & a 3800-1

Light Fastness

5 (ISO 105 - B02)

Fastness to Rubbing

Wet: 4, Dry: 4 (ISO 105 -X12)

Cleaning

Vacuum regularly. Professionally dry clean or wipe clean with a damp cloth.

* abrasion testing produces a wide variability of results even from the same test sample. The independent certificate of ≥ 50.000 cycles is available on our website or from our customer service team. Internally we specify this product at > 20.000 cycles which we believe is realistic for repeatability of testing.

Informazioni Tecniche

Composizione

100% Pura Lana Vergine
Coloranti non metallici

Ambiente

Riutilizzabile e smaltibile

Altezza

140 cm minimo

Peso

460g/m². ± 5% (645g/lin.m ±5%)

Resistenza all'abrasione*

Robusto / garantito 10 anni
Rapporto di prova con risultato ≥ 50.000 Cicli Martindale

Resistenza al fuoco

EN 1021 - 1 (sigaretta)

EN 1021 - 2 (cerino)

BS 7176 Low Hazard

NF D 60-103, AM 18

UNI 9175 Classe 1 M

en 13501-1 Adhered Class D, s1, d0

ONORM B 3825 & a 3800-1

Resistenza alla luce

5 (ISO 105 - B02)

Resistenza allo sfregamento

Wet: 4, Dry: 4 (ISO 105 -X12)

Pulizia

Passare regolarmente con l'aspirapolvere. Pulire professionalmente a secco o pulire con un panno umido.

* il test di abrasione produce un'ampia variabilità dei risultati anche dal medesimo campione di prova.

Il rapporto di prova ≥ 50.000 cicli è disponibile sul sito www.camirafabrics.com.

Internamente specificiamo questo prodotto a > 20.000 cicli che riteniamo realistici per la reperibilità del test.

PELLIZZONI

FX

faux leather
ecopelle

St
1
B
i
e
t
a
m

PELLIZZONI

FX faux leather ecopelle



X01 WHITE



X03 MAGNOLIA



X04 SAND



X06 PEBBLE



X07 HONEY



X08 CANARY



X11 SUNFLOWER



X13 GERANIUM



X15 AMARANTH



X16 FUXIA



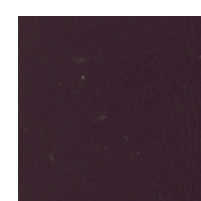
X17 ANTIQUE



X18 HORTENSIA



X21 PRIMROSE



X22 CIUC



X23 FAWN



X25 TAUPE



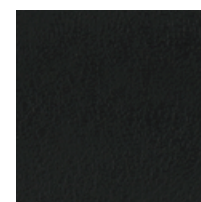
X26 CEMENT



X27 COFFEE



X29 WENGÈ



X45 BLACK



X32 SAGE



X33 APPLE



X34 WATER



X36 SKY



X38 DENIM



X39 FOG



X40 STEEL



X41 STONE



X43 NAVY



X44 NIGHT

FX faux leather ecopelle



Resistente al fuoco
Fire retardant



Resistente al graffio
Scratch resistant



Adatto ad uso medico
Medical use suitable



IMO MED resistente al fuoco per uso navale
IMO MED fire retardant suitable for nautical use



Traspirante
Breathable

Fire retardant vinyl, phthalate free and certified for contract. A product with hundreds of qualities: excellent cleanability, antimicrobial and antibacterial, stretchy, non-toxic, excellent scratch and tear-resistance, made in Italy.

Finta pelle ignifuga, esente da ftalati e certificata per il contract. Un prodotto dalle mille qualità: ottima pulibilità, antimicrobico e antibatterico, elasticizzato, atossico, ottima resistenza al graffio e alla lacerazione, made in Italy.

Composition

88% PVC - 7% PL - 4% CO - 1% PU (polycarbonate)

Width 140 cm \pm 2%

Weight 715 gr/m² \pm 10%

Thickness 1,1 mm \pm 0,2 mm

Tensile resistance UNI EN ISO 1421

long \geq 25 daN/5cm

across \geq 15 daN/5cm

Extension at break UNI EN ISO 1421

long \geq 23%

across \geq 140%

Tear resistance

long \geq 9 daN

across \geq 7 da N UNI 4818 P9

Adhesion

UNI EN ISO 2411

\geq 3 daN/5 cm

Color fastness to artificial light

Xeno - UNI EN ISO 105 B02

\geq 7 (blu scale)

Color fastness to rubbing

Crock meter - UNI EN ISO 105 X12

dry \geq 5 (grey scale)

wet \geq 5 (grey scale)

Resistance to flexures after 4 weeks jungle test

Bally - UNI 4818 92-13

\geq 200.000 rubs

7 years guarantee

Abrasion resistance

Martindale - UNI EN ISO 5470 - 2

\geq 200.000 rubs

Color resistant to alcohol

Veslic

\geq 100 rubs

Easy to clean

Veslic

\geq 50 rubs

Antimicrobial - Antimycotic

fresh - hygienic - odor free

super-stretchy - soft - R.E.A.C.H.

Fire retardant Italy UNI 9175 Class 11M

Europe EN 1021-2:2006

England BS 5852 IS 1 (match)

U.S.A. California TB 117:2013

Nautical FTP Code 307(88):10 Annex 1 Part 8

Fire retardant

minimum quantity - 300 mtl in 4 weeks

France NF-P 503 Class M1

Germany DIN 4102-1 Class B1

England BS 5852 IS CRIB 5

Composizione

88% PVC - 7% PL - 4% CO - 1% PU (polycarbonate)

Altezza 140 cm \pm 2%

Peso 715 gr/m² \pm 10%

Spessore 1,1 mm \pm 0,2 mm

Carico a rottura UNI EN ISO 1421

lunghezza \geq 25 daN/5cm

altezza \geq 15 daN/5cm

Allungamento a rottura UNI EN ISO 1421

lunghezza \geq 23%

altezza \geq 140%

Resistenza alla lacerazione UNI 4818 P9

lunghezza \geq 9 daN

altezza \geq 7 daN

Delaminazione

UNI EN ISO 2411

\geq 3 daN/5 cm

Solidità delle tinte alla luce artificiale

Xeno - UNI EN ISO 105 B02

\geq 7 (blu scale)

Solidità delle tinte allo sfregamento

Crock meter - UNI EN ISO 105 X12

secco \geq 5 (grey scale)

umido \geq 5 (grey scale)

Resistenza flessioni dopo 4 settimane di jungle test

Bally - UNI 4818 92-13

\geq 200.000 cicli

garantito 7 anni

Resistenza all'abrasione

Martindale - UNI EN ISO 5470 - 2

\geq 200.000 cicli

Solidità del colore all'alcool

Veslic

\geq 100 cicli

Buona pulibilità

Veslic

\geq 50 cicli

Antimicrobico - Antimycotic

fresco - igienico e senza odori

elasticizzato - morbido - R.E.A.C.H.

Resistenza al fuoco Italia UNI 9175 Class 11M

Europa EN 1021-1:2006

Inghilterra BS 5852 IS 0 (cigarette)

Sati Uniti California TB 117:2013

Navale FTP Code 307(88):10 Annex 1 Part 8

Resistenza al fuoco

quantità minima - 300 mtl in 4 settimane

Francia NF-P 503 Class M1

Germania DIN 4102-1 Class B1

Inghilterra BS 5852 IS CRIB 5

PELLIZZONI

Marble

marble finishes

finiture marmo

Marble finishes

PELLIZZONI

MARMO

marble finishes

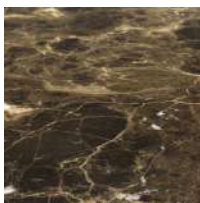
finiture marmo



BC BIANCO CARRARA



ST STARDUST



EM EMPERADOR



NM NERO MARQUINIA

PELLIZZONI

Metal

metal finishes

finiture metallo

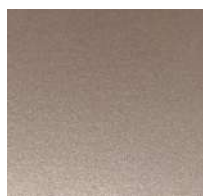
metal finishes
finiture metallo

PELLIZZONI

METAL FINISHES

painted finishes

finiture verniciate



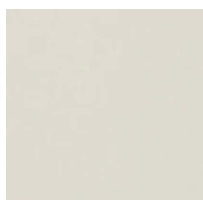
CH CHAMPAGNE
CHAMPAGNE



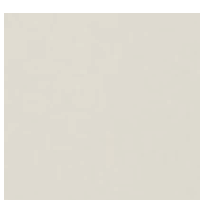
OR GOLD PAINTED
LACCATO ORO



PG PEARL GREY
GRIGIO PERLA



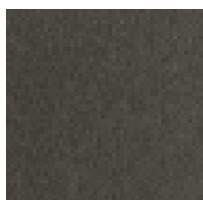
BO MATT WHITE
BIANCO OPACO



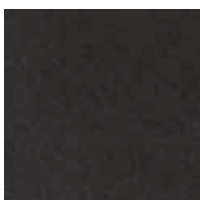
BI GLOSSY WHITE
BIANCO LUCIDO



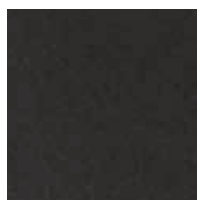
BR BRONZE PAINTED
LACCATO BRONZO



GF GRAPHITE PAINTED
LACCATO GRAFITE



NO MATT BLACK
NERO OPACO



NS SEMIBRIGHT BLACK
NERO SEMILUCIDO

brass finishes

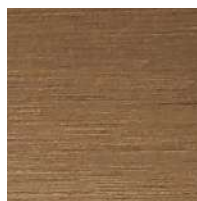
finiture ottone



OL BRIGHT BRASS
OTTONE LUCIDO



OS SATIN BRASS
OTTONE SATINATO



OB BRONZED BRASS
OTTONE BRONZATO

METAL

metal finishes finiture metallo

Powder coating

A thin layer of powder paint is applied on the surface and then thermally fixed.

Satin and bright brass finishes

Obtained through abrasions and transparent protective painting.

Bronze brass finish

Obtained by oxidation and surface brushing. Transparent protective painting.

Verniciatura a polvere

Ottenuta mediante l'applicazione di vernici in polvere poste in cottura a forno.

Satinatura e lucidatura ottone

Ottenute tramite abrasioni e verniciatura trasparente di protezione.

Bronzatura ottone

Ottenuta tramite ossidazione e spazzolatura della superficie. Verniciatura trasparente di protezione.

PELLIZZONI

PPF

soft leather

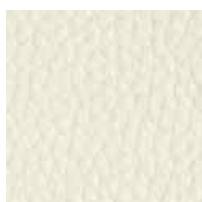
pelle pieno fiore

st
la
a
i
e
t
a
m

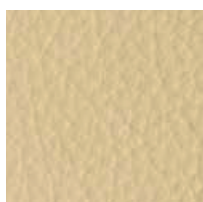
PELLIZZONI

PPF

soft leather
pelle pieno fiore



P01 DASH



P02 IVORY



P04 DESERT STORM



P06 CLAY



P07 LEMONGRASS



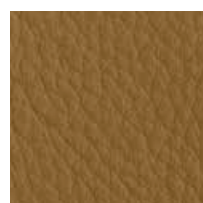
P08 CARIOCA



P10 LION



P11 CINNEMON



P13 AVANA



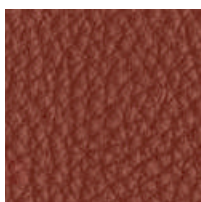
P14 ANTILOP



P15 VOLCANO



P16 SWAMP



P18 POT-PURRY



P19 REDORANGE



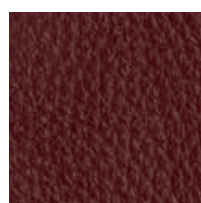
P20 ENERGY



P22 SIAM



P23 PHONEBOX



P24 WINE



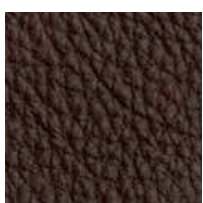
P26 CARRUBO



P27 EBONY



P29 CHESTNUT



P30 BRAUN



P31 PEATMOOS



P32 ACAJOU

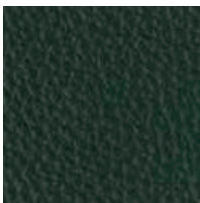


P33 HEZELNUT

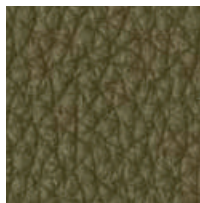
PELLIZZONI

PPF

soft leather
pelle pieno fiore



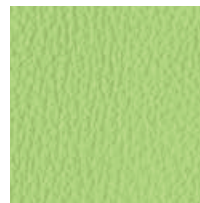
P35 BOTTLE



P37 CAMOUFLAGE



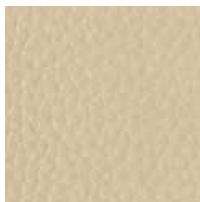
P39 LIME



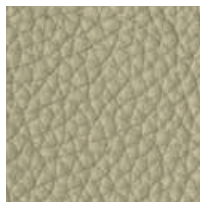
P40 S. BREEZE



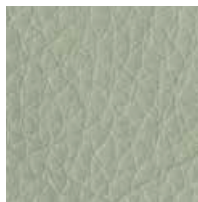
P41 PEARL



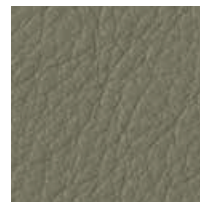
P42 PAPYRUS



P43 TURTLEDOVE



P44 CIMENT



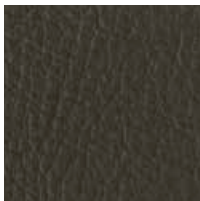
P45 SMOKE



P46 GREY



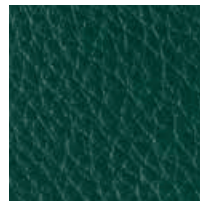
P47 IRON



P48 GREY SHADOW



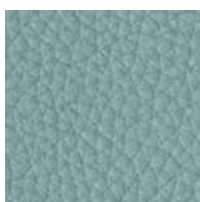
P49 PACIFIC



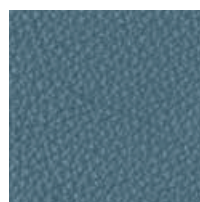
P50 BLU PETROL



P53 LICHENE



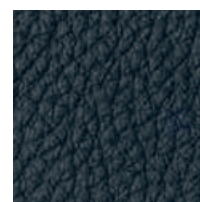
P54 NORTH POLE



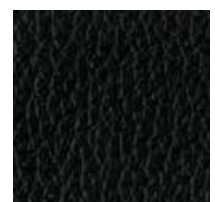
P56 SANTORINI



P57 MATISSE



P58 OCEANIA



P60 BLACK INK

PPF

soft leather pelle

Product Information

Bovine of Extra European origin, lightly buffed natural grain. Thickness 1,2 - 1,4 mm. Chrome tannage. The average size of each hide is around 4,8 - 5,0 sqm. Through dyed; finishing with resins and pigments. Article with a pigmented and protective coat, with a soft, waxy feel and semi-matt appearance.

Informazioni sul Prodotto

Pelle bovina mezzo fiore a grana naturale di spessore finito 1,2 - 1,4 mm. Superficie media 4,8 - 5,0 m². Concia al cromo. Tintura passante; rifinitura con pigmenti e resine. Articolo con mano morbida, tatto ceroso e aspetto semiopaco.

Test

Colour fastness to and from rubbing

dry 500c

wet 250c

test method: UNI EN ISO 11640

guaranteed: ISO 105 A03

Sweat Alkaline Solution

ISO 11641 ph8

sweat 80c

guaranteed: > = 4

Colour fastness to artificial light Xenon arc

test method: UNI EN ISO 105 B02

measurement unit: blue scale

guaranteed: > = 5

Finish Adhesion

test method: UNI EN ISO 105 B02

measurement unit: N/Cm

guaranteed: > = 2,5

Flexing endurance

test method: ISO 5402

measurement unit: cycles

guaranteed: > = 50.000

Determination of pH

test method: ISO 4045

measurement unit: pH

guaranteed: > = 3,5

Difference figure (Only per pH < 4)

guaranteed: < = 0,7

Tear strenght - Single edge tear

test method: ISO 3377-1

measurement: N

guaranteed: > = 20

Analisi

Resistenza allo sfregamento tipo Veslic

secco 500c

umido 250c

metodo di prova: UNI EN ISO 11640

unità di misura: ISO 105 A03

Sudore Alcalino

ISO 11641 ph8

sudore 80c

garantito: > = 4

Resistenza alla luce, lampada ad arco di Xeno

metodo di prova: UNI EN ISO 105 B02

unità di misura: scala dei blu

garantito: > = 5

Adesione della rifinitura

metodo di prova: UNI EN ISO 105 B02

unità di misura: N/Cm

garantito: > = 2,5

Resistenza alla flessione

metodo di prova: ISO 5402

unità di misura: cicli

garantito: > = 50.000

Determinazione del pH

metodo di prova: ISO 4045

unità di misura: pH

garantito: > = 3,5

Indice di differenza (Solo per pH < 4)

garantito: < = 0,7

Resistenza allo Strappo Pantalone

metodo di prova: ISO 3377-1

unità di misura: N

garantito: > = 20



PELLIZZONI

PPFV

vintage leather
pelle vintage

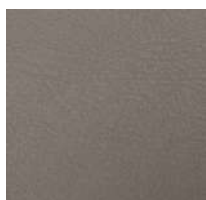
st
la
a
i
t
a
m

PELLIZZONI

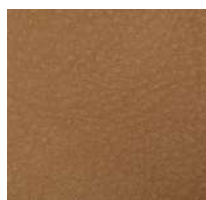
PPFV

vintage leather

pelle vintage



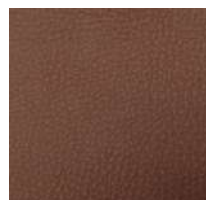
09 ARGILLA



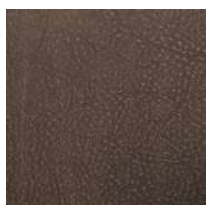
07 NATURALE



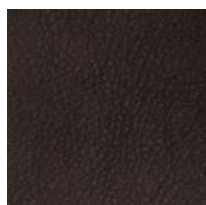
10 TAUPE



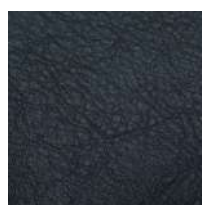
01 BULGARO



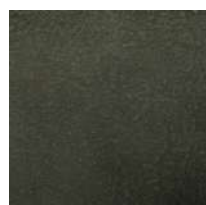
02 TERRA



03 CHOCO



12 NOTTE



08 OLIVA

PPFV

vintage leather pelle vintage

Top-grain leather, aniline dyed. The final wax finishing is partly abraded to grant color nuances with a "vintage" effect.

Thickness: 1,3-1,5 mm

Medium size: ≤ 4,70 mq

Tannage: chrome tanning

Dyeing: aniline dyed

Finish: waxes

Pelle fiore corretto, tinta all'anilina, la rifinitura a base di cera viene abrasa per conferire sfumature di colore ad effetto usurato.

Spessore: 1,3-1,5 mm

Misura media: ≤ 4,70 mq

Concia: al cromo

Tintura: all'anilina

Rifinitura: prodotti cerosi

PELLIZZONI

Wood

wood finishes

finiture legno

St
La
a
i
e
t
a
m

PELLIZZONI

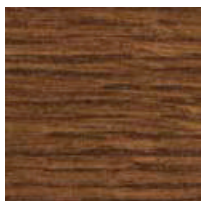
WOOD

wood finishes

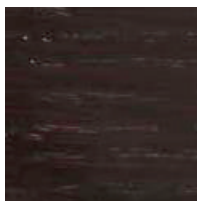
finiture legno



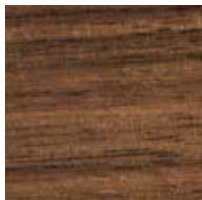
RS BLEACHED OAK
ROVERE SBIANCATO



RN OAK DYED WALNUT
ROVERE TINTO NOCE



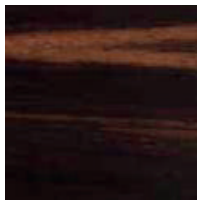
RW OAK DYED WENGÈ
ROVERE TINTO WENGÈ



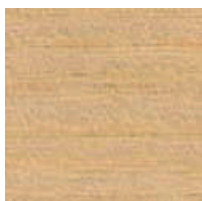
NC WALNUT CANALETTO
NOCE CANALETTO



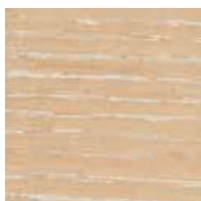
LAC GLOSSY LACQUERED
LACCATO LUCIDO



EB EBONY
EBANO



FR NATURAL ASH
FRASSINO NATURALE



FS BLEACHED ASH
FRASSINO SBIANCATO



FG GREY ASH
FRASSINO GRIGIO



FN BLACK ASH
FRASSINO NERO

WOOD

wood finishes

finiture legno

Wood is naturally characterized by veins and variable shades, which make the product in solid wood more natural and valuable. It's our job to minimize variations, especially within the same supply. Direct exposure to light can alter color shades over time. Wooden bases or legs of chairs and tables are in solid wood, while table or desk tops are made of wood veneered with real wooden slabs.

Il legno è per la sua natura caratterizzato da venature e tonalità variabili, che rendono il prodotto in massello ancora più naturale e di pregio. È nostra cura minimizzare le variazioni di tonalità, soprattutto nell'ambito della stessa fornitura. L'esposizione diretta alla luce può alterare le tonalità dei colori con il passare del tempo. Le gambe o strutture di sedie e tavoli sono in massello, mentre i piani dei tavoli o parti di scrivanie sono in legno impiallacciato con lastra di vero legno.

PELLIZZONI

YD

yoredale fabric
tessuto yoredale

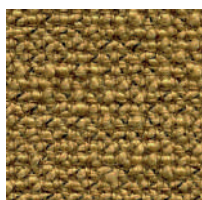
St
la
a
i
e
t
a
m

PELLIZZONI

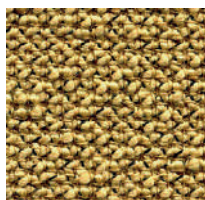
YD

yoredale fabric

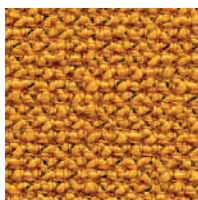
tessuto yoredale



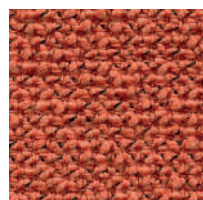
UDA18 WHARFE



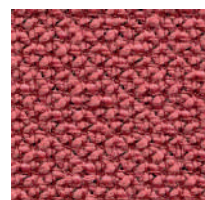
UDA05 SIMONSTONE



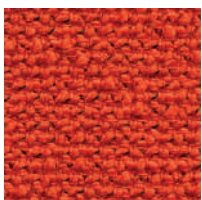
UDA 16 NIDD



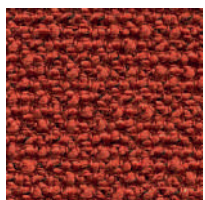
UDA03 ASKRIGG



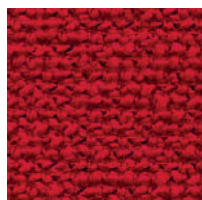
UDA24 WODEN



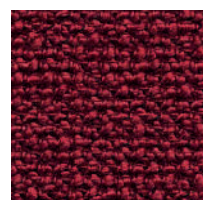
UDA 12 WOODALE



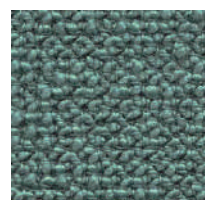
UDA 13 WALDEN



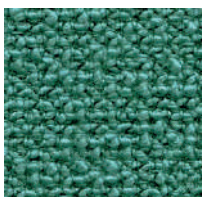
UDA 19 RIPLEY



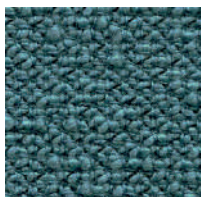
UDA 14 SEDBUSK



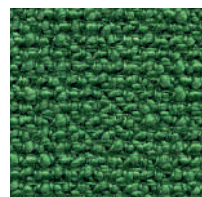
UDA22 BURNSALL



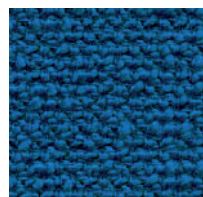
UDA 23 CRACOE



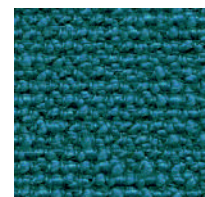
UDA 21 DACRE



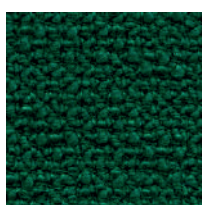
UDA 10 CRAY



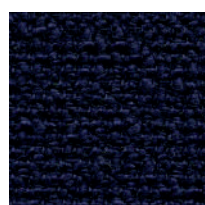
UDA 15 LITTON



UDA 20 DARLEY



UDA09 THORNTON



UDA11 FOSSDALE



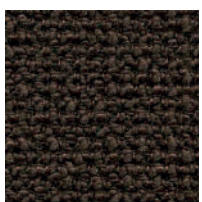
UDA17 RIBBLE



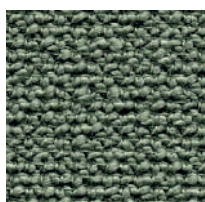
UDA02 KIDSTONE



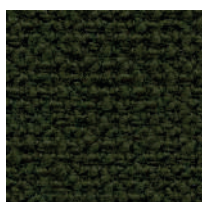
UDA07 CARPERBY



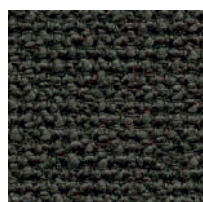
UDA06 THORALBY



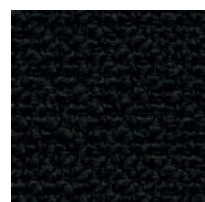
UDA04 HARDRAW



UDA08 GAYLE



UDA25 LEYBURN



UDA01 BUCKDEN

YD

yoredale fabric tessuto yoredale



Task seating



Soft seating



Cigarette
& Match



Year guarantee

Taking its name from the ancient title of Wensleydale in the UK, Yoredale is a fabric steeped in heritage. A highly textured textile with undulations reflective of its Yorkshire roots, its fascinating bouclé style yarn includes a contrasting black binder, creating subtle details within the weave that brings added depth to its saturated tones. Woven from British wool, Yoredale is truly timeless, blending its rich history with a contemporary appeal.

Yoredale è un tessuto intriso di eredità, con una trama altamente strutturata che trova le sue radici nello Yorkshire. Il suo affascinante filato in stile bouclé include un elegante nero a contrasto che crea sottili dettagli donando profondità ai toni saturi. Tessuto dalla lana britannica, Yoredale è davvero un materiale senza tempo e fonde la sua ricca storia con un fascino contemporaneo.

Composition

95% Wool, 3% Polyester, 2% Nylon

Environment

Certified to Indoor Advantage™ Gold

Non metallic dyestuffs

Width

54 inches minimum

Weight

203/4 oz/sq yd ±5% (31 oz/running yd ±5%)

Abrasion Resistance

D4966 Martindale method.

Heavy Duty Upholstery independently certified to

≥50,000 cycles

Covered by a full and comprehensive 10 year guarantee

(full details available)

Flammability

California Technical Bulletin 117 - 2013

NFPA 260 + UFAC Class 1

BS 7176 Low Hazard

IMO FTP Code (Part 8)

Cleaning

Water-based cleaning agent or solvent: Depending on the stain, you can use a dry-cleaning solvent, the foam of a mild detergent, or upholstery shampoo.