

Ditre Italia Products

2022

**Tessuti outdoor**  
***outdoor Fabrics***

**DITRE**  
**italia**



VICTORIA 587



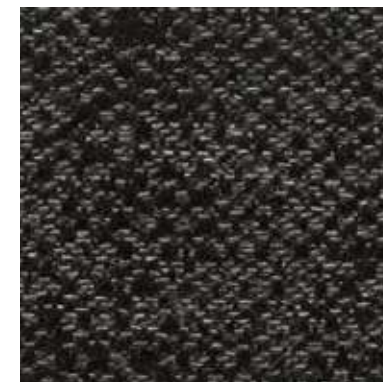
VICTORIA 588



VICTORIA 589



VICTORIA 590




VICTORIA 591



VICTORIA 592

**INFORMAZIONI TECNICHE / TECHNICAL INFORMATION**

Composizione / composition	100% PC
Martindale / martindale	20.000 cicli/cycles
Pilling / Pilling	4/5

 **idrorepellente**  
water repellent

**MANUTENZIONE / MAINTENANCE**



CAT. V

## Versailles



VERSAILLES 058



VERSAILLES 061



VERSAILLES 063

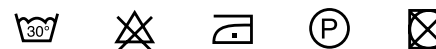


VERSAILLES 092

### INFORMAZIONI TECNICHE / TECHNICAL INFORMATION

Composizione / composition	100% PP
Martindale / martindale	40.000 cicli/cycles
Pilling / Pilling	5

### MANUTENZIONE / MAINTENANCE



CAT. V

## Valley



VALLEY 019



VALLEY 042



VALLEY 053



VALLEY 093

### INFORMAZIONI TECNICHE / TECHNICAL INFORMATION

Composizione / composition	100% PP
Martindale / martindale	40.000 cicli/cycles
Pilling / Pilling	5

### MANUTENZIONE / MAINTENANCE







UPDATE 001



UPDATE 002



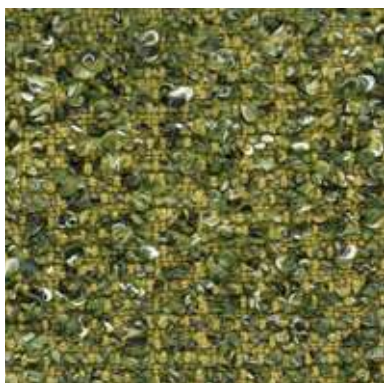
UPDATE 003



UPDATE 004



UPDATE 009



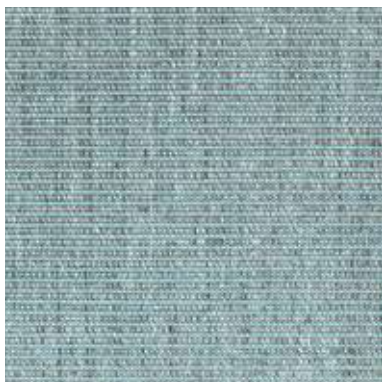
UPDATE 010

**INFORMAZIONI TECNICHE / TECHNICAL INFORMATION**

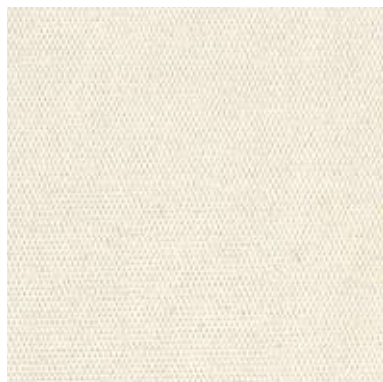
Composizione / composition	93% RPP - 7% PL
Martindale / martindale	35.000 cicli/cycles
Pilling / Pilling	4/5

 Eco-friendly

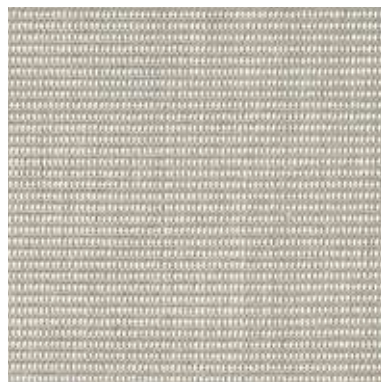
**MANUTENZIONE / MAINTENANCE**



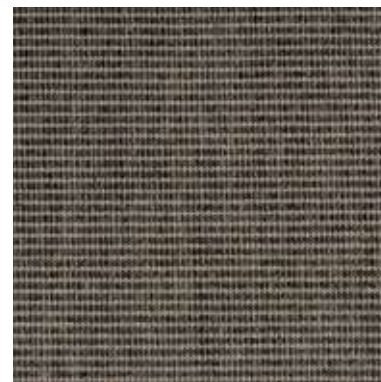
TROPIC 502



TROPIC 503



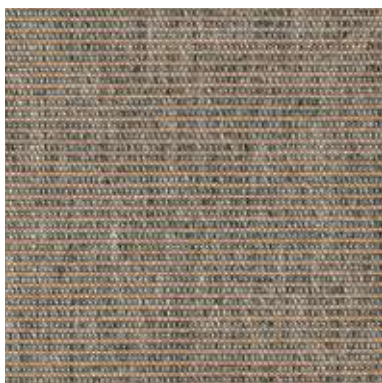
TROPIC 511



TROPIC 532




TROPIC 534



TROPIC 535

### INFORMAZIONI TECNICHE / TECHNICAL INFORMATION

Composizione / composition	100% PC
Martindale / martindale	20.000 cicli/cycles
Pilling / Pilling	5


**idrorepellente**  
 water repellent

### MANUTENZIONE / MAINTENANCE



CAT. T

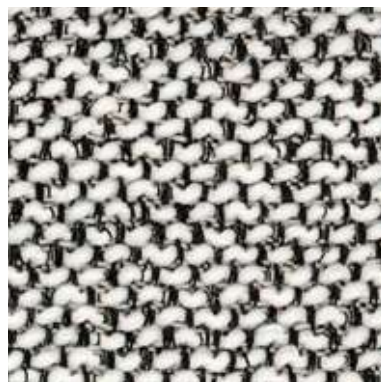
## Tivoli



TIVOLI 007



TIVOLI 008



TIVOLI 018



TIVOLI 084

### INFORMAZIONI TECNICHE / TECHNICAL INFORMATION

Composizione / composition	100% PP
Martindale / martindale	30.000 cicli/cycles
Pilling / Pilling	4

### MANUTENZIONE / MAINTENANCE



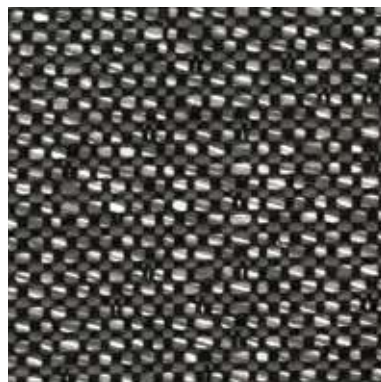




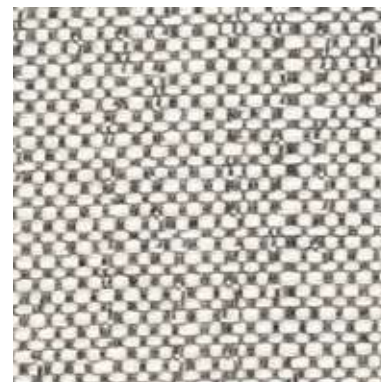
THAI 570



THAI 573



THAI 575



THAI 576



THAI 577



THAI 580

**INFORMAZIONI TECNICHE / TECHNICAL INFORMATION**

Composizione / composition	100% PC
Martindale / martindale	20.000 cicli/cycles
Pilling / Pilling	5

 **idrorepellente**  
water repellent

**MANUTENZIONE / MAINTENANCE**





PERTH 001



PERTH 002



PERTH 003



PERTH 004



PERTH 009



PERTH 010

**INFORMAZIONI TECNICHE / TECHNICAL INFORMATION**

Composizione / composition	100% REC. PP
Martindale / martindale	50.000 cicli/cycles
Pilling / Pilling	4/5

 **Eco-friendly**

**MANUTENZIONE / MAINTENANCE**

Ditre Italia Products

2022

—

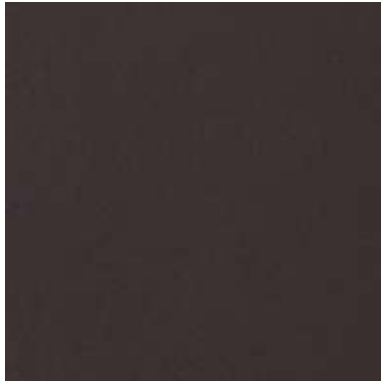
# **Finiture** ***Finishing***

**DITRE**  
**italia**

## *Finiture metalliche*



ME01 ANTRACITE



ME03 TESTA DI MORO



ME04 CROMO LUCIDO



ME05 CROMO NERO



ME07 BRONZATO



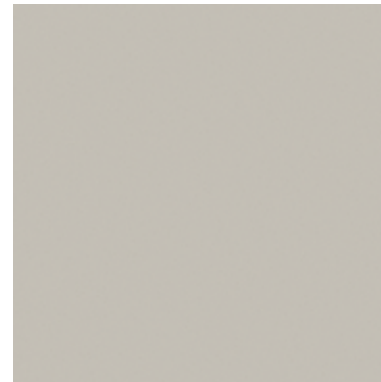
ME09 NERO



ME10 GOLD



ME11 LIGHT BROWN



ME12 GRIGIO SETA



LACQUERED FINISHES

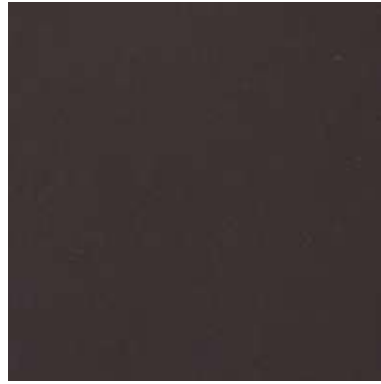
## ***Finiture laccate***



LE01 ANTRACITE



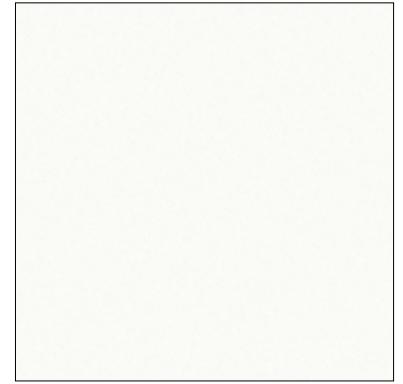
LE02 GESSO



LE03 TESTA DI MORO



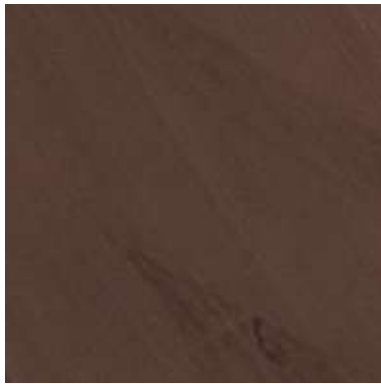
LE10 GRIGIO SETA



LE14 BIANCO OPACO



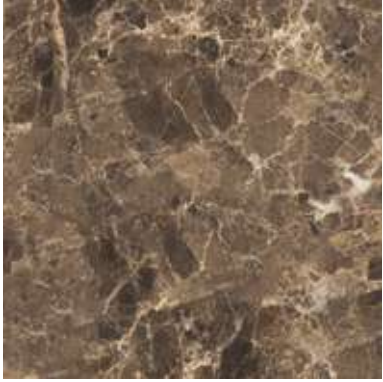
LE15 ROSSO OPACO



LE19 BRUSH OXIDE

MARBLES

*Marmi*



MA01 DARK EMPERADOR



MA02 CARRARA BIANCO



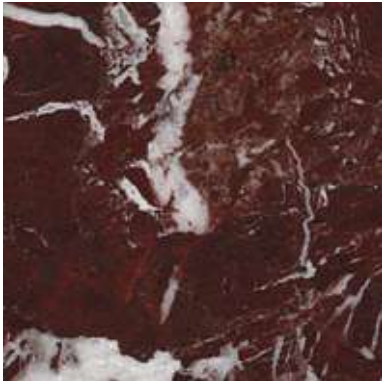
MA06 NERO MARQUINA



MA08 GRIGIO CARNICO



MA09 SPIDERMAN



MA10 ROSSO LEVANTO



MA11 SEQUOIA BROWN

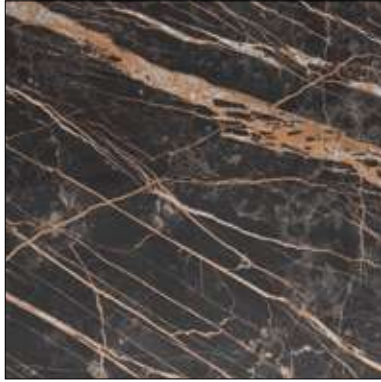
STONEWARE

## Gres

---



MA03 CALACATTA



MA07 NOIR DESIRE



MA12 INVISIBLE WHITE



MA13 PORFIDO MARRONE

---



BONDED LEATHER

## *Cuoio rigenerato*



CR01 NATURALE



CR02 MARRONE



CR03 TORTORA



CR05 GRIGIO



CR07 GESSO



CR08 TESTA DI MORO



CR10 CANAPA

CEMENT

## **Cemento**

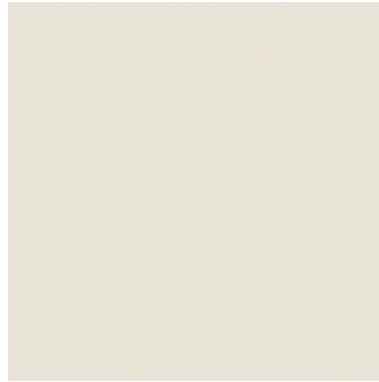
---



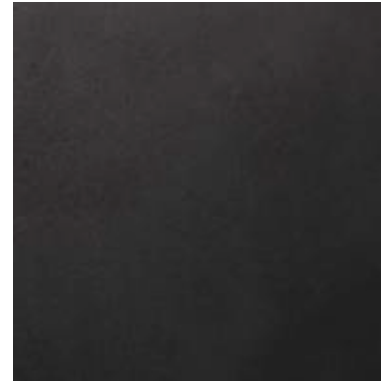
CM01 CEMENTO NATURALE



CM02 CEMENTO ANTRACITE



CM03 BIANCO GESSO



CM04 NERO GRAFITE

---

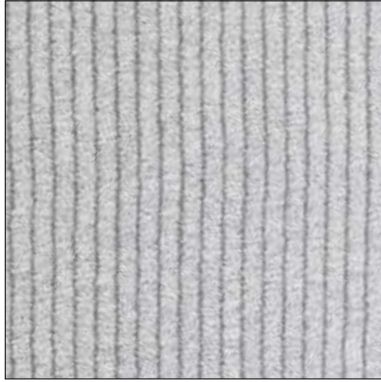
WOODS

## *Legni*

---



LE05 EUCALIPTO



LE11 SMOKY VELVET



LE12 GREY WOOD



LE16 NOCE CHOCOLATE



LE17 NOCE INTARSIO



LE18 NOCE CANALETTO

---



GLASSES

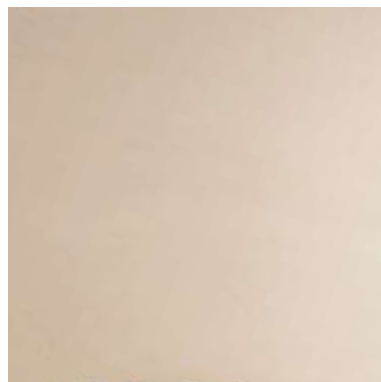
## *Vetri*



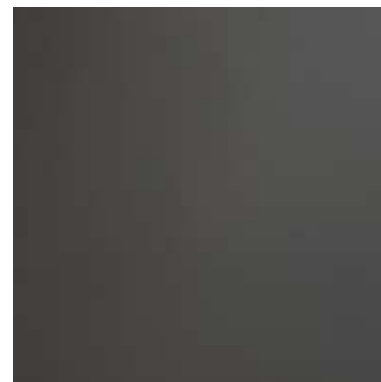
VE01 TRASPARENTE



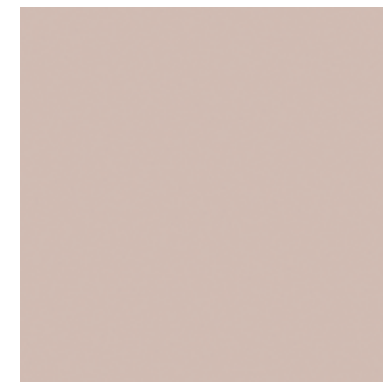
VE02 BRONZATO



VE04 SATINATO



VE05 FUMÈ



VE06 ROSA CIPRIA\*



VE07 ARANCIO\*



VE08 VIOLA\*



VE09 AZZURRO\*



VE10 VERDE OLIVA\*



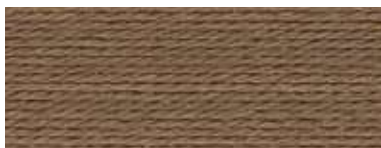
VE11 VETRO MILLERIGHE FUMÈ

\* VETRO STRATIFICATO TRASPARENTE - TRANSPARENT LAMINATED GLASS

## *Fili - cuciture e cerniere*



FI01



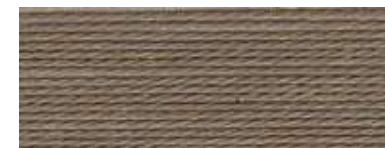
FI14



FI602



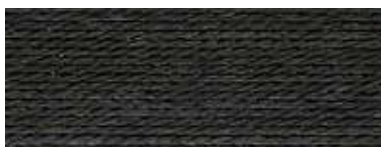
FI550



FI5400



FI210



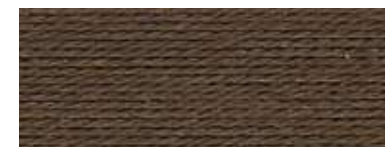
FI604



FI4002



FI6006



FI307



FI7100



FI1129



FI905



FI5010



CE01 BEIGE



CE03 GRIGIO



CARTER 101 BEIGE



CARTER 102 TESTA DI MORO



CARTER 103 CENERE



EIKON 701 GRAY



EIKON 702 BEIGE



EIKON 703 MULTICOLOR

---



MELLOW 870 BEIGE



MELLOW 892 TORTORA



MELLOW 875 CENERE



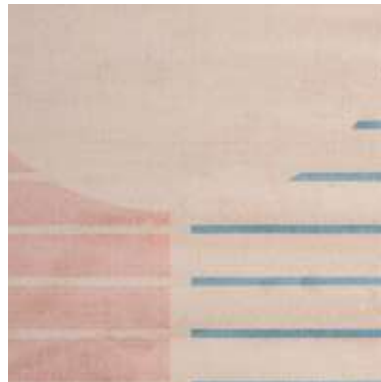
MELLOW 878 NERO



NIPPON ROCK 260 DARK



NIPPON ROCK 270 LIGHT



NIPPON ROCK 250 COLOR



NOLAN 378 PERLA



NOLAN 387 TORTORA



NOLAN 385 CARBONE



OVERLAP 092 NUDE



OVERLAP 091 BLUSH



OVERLAP 093 ACQUA

---





SCRATCH 653 LIGHT



SCRATCH 652 GREY



WAVES 601 LIGHT



WAVES 602 GREY



WEST 201 BEIGE



WEST 202 TESTA DI MORO



WEST 203 CENERE

---

Ditre Italia Products

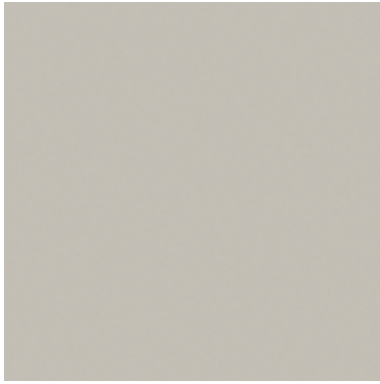
2022

**Finiture outdoor**  
***Outdoor finishing***

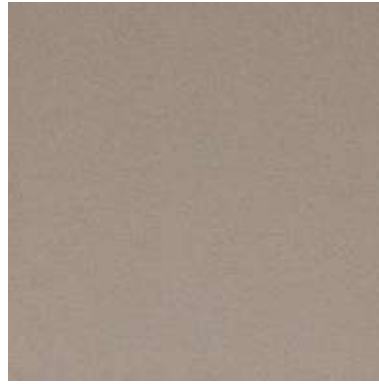
**DITRE**  
**italia**



ME01 ANTRACITE



ME12 GRIGIO SETA



ME11 LIGHT BROWN

LACQUERED FINISHES

## ***Finiture laccate***

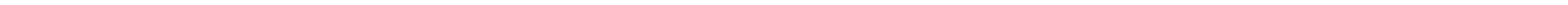
---



LE01 ANTRACITE



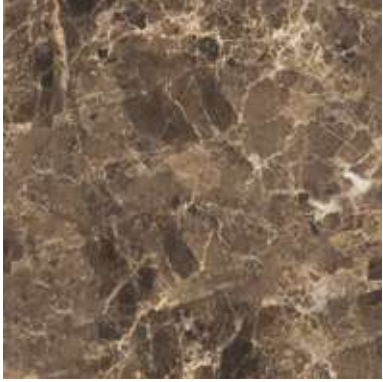
LE10 GRIGIO SETA





MARBLES

*Marmi*



MA01 DARK EMPERADOR



MA02 CARRARA BIANCO



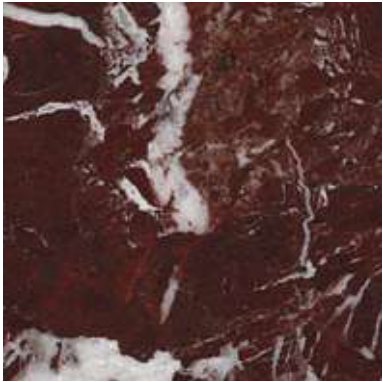
MA06 NERO MARQUINA



MA08 GRIGIO CARNICO



MA09 SPIDERMAN



MA10 ROSSO LEVANTO



MA11 SEQUOIA BROWN

STONEWARE

## *Gres*

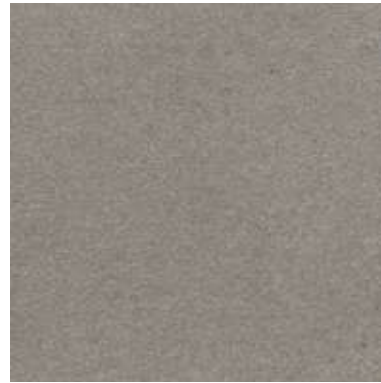
---



MA14 CALCE BIANCO



MA15 TERRA



MA16 CALCE TORTORA



MA17 OSSIDO BRUNO

---

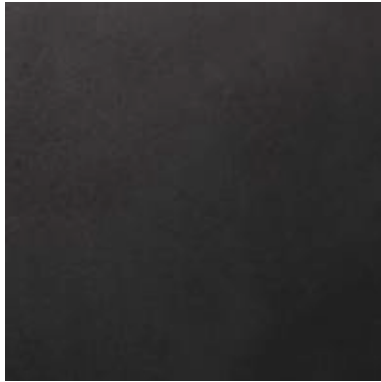
CEMENT

## ***Cemento***

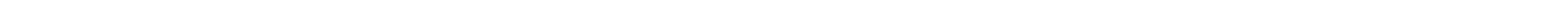
---



CM03 BIANCO GESSO



CM04 NERO GRAFITE



WOODS

## *Legni*

---



LE20 IROKO

---

GLASSES

---

***Vetri***



VE02 BRONZATO

---





HP01 PEBBLE GREY



HP02 PRADO ALU GREY

ROPE

## ***Corda***

---



CO01 PEBBLE GREY



CO02 CORDINO BEIGE

---

Ditre Italia Products

—

# Fabrics *Tessuti*

UK - EIRE 2022

**DITRE**  
**italia**

CAT. M

# Map



MAP 900



MAP 904



MAP 107



MAP 400



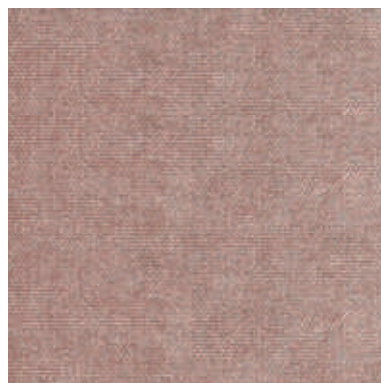
MAP 100



MAP 506



MAP 610



MAP 700



MAP 806



MAP 805

## TECHNICAL INFORMATION / INFORMAZIONI TECNICHE

Composition / composizione	100% PL FR
Martindale / martindale	>80.000 cycles/cicli
Pilling / Pilling	≥4

## MAINTENANCE / MANUTENZIONE





MAP 301

---

**TECHNICAL INFORMATION / INFORMAZIONI TECNICHE**

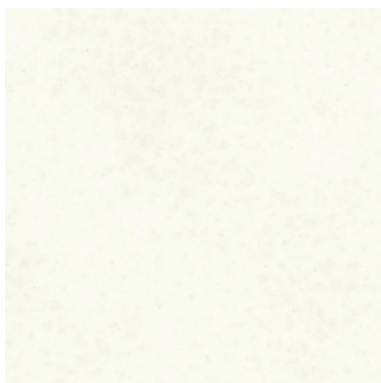
Composition / composizione	100% PL FR
Martindale / martindale	>80.000 cycles/cicli
Pilling / Pilling	≥4

**MAINTENANCE / MANUTENZIONE**

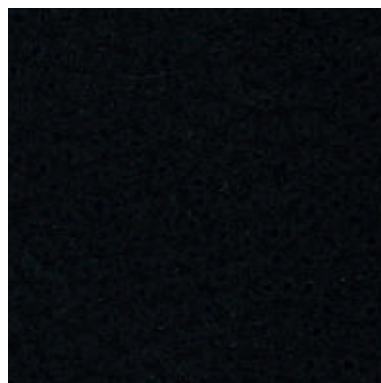




MAYA 000



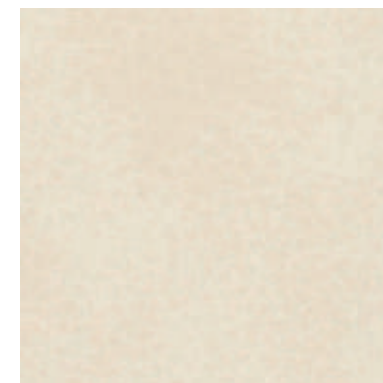
MAYA 001



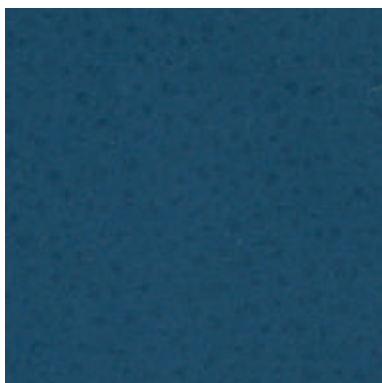
MAYA 016



MAYA 020



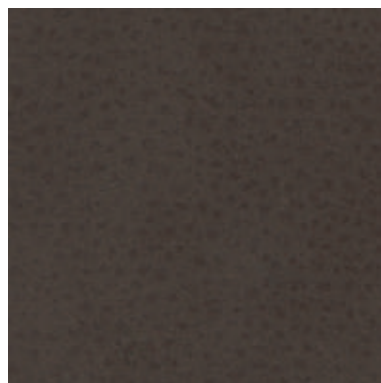
MAYA 100



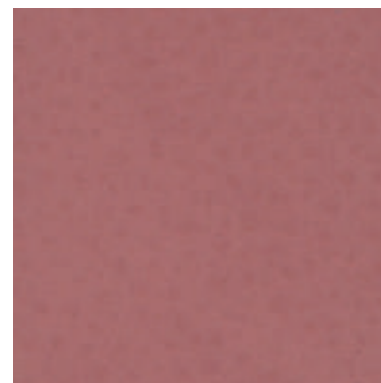
MAYA 120



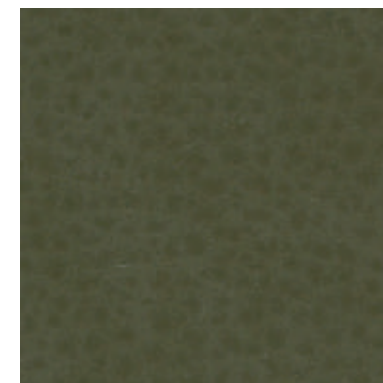
MAYA 175



MAYA 240



MAYA 275

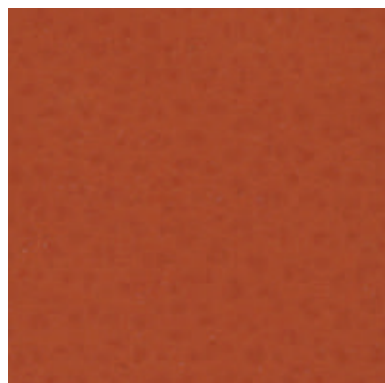


MAYA 280

**TECHNICAL INFORMATION / INFORMAZIONI TECNICHE**

Composition / composizione	30% CO - 2% PU - 68% PVC
Martindale / martindale	>50.000 cycles/cicli
Pilling / Pilling	-

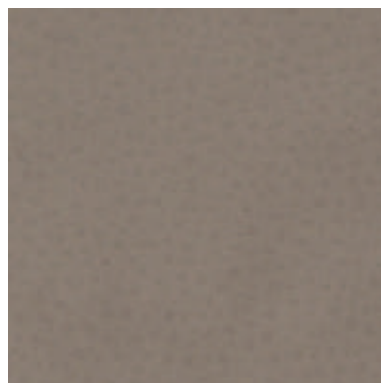
**MAINTENANCE / MANUTENZIONE**



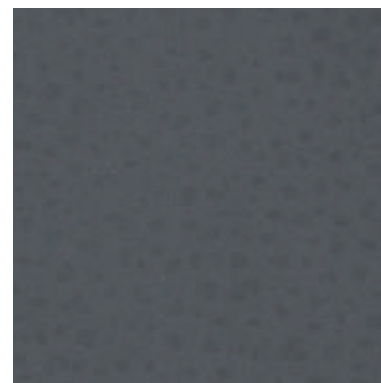
MAYA 410



MAYA 450



MAYA 750



MAYA 791



MAYA 950

**TECHNICAL INFORMATION / INFORMAZIONI TECNICHE**

Composition / composizione	30% CO - 2% PU - 68% PVC
Martindale / martindale	>50.000cycles/cicli
Pilling / Pilling	-

**MAINTENANCE / MANUTENZIONE**

CAT. M

## Matilda



MATILDA 01



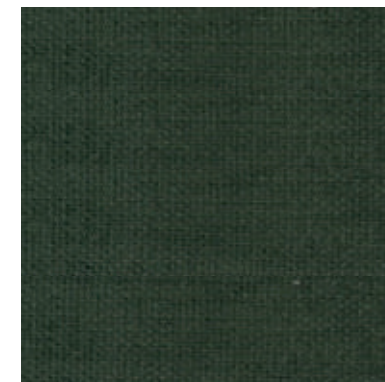
MATILDA 03



MATILDA 04



MATILDA 12



MATILDA 14



MATILDA 17



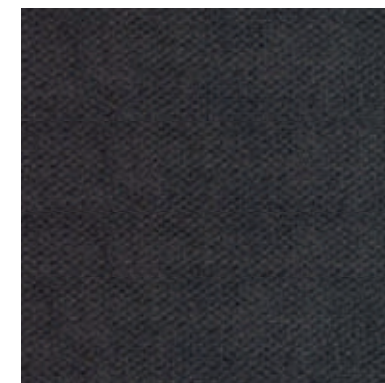
MATILDA 18



MATILDA 21



MATILDA 22



MATILDA 25

### TECHNICAL INFORMATION / INFORMAZIONI TECNICHE

Composition / composizione	100% PL
Martindale / martindale	>100.000 cycles/cicli
Pilling / Pilling	4-5

### MAINTENANCE / MANUTENZIONE



CAT. M

# Matilda



MATILDA 11

## TECHNICAL INFORMATION / INFORMAZIONI TECNICHE

Composition / composizione	100% PL
Martindale / martindale	>100.000 cycles/cicli
Pilling / Pilling	4-5

## MAINTENANCE / MANUTENZIONE





CAT. M

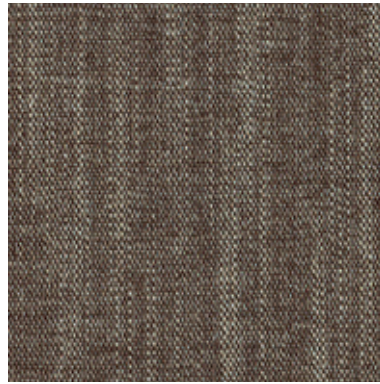
## Media



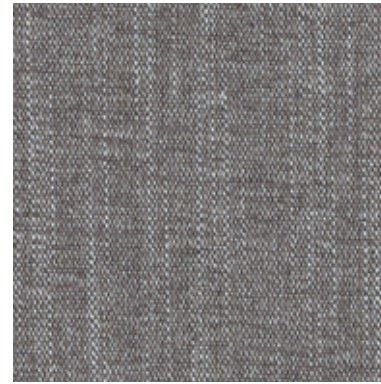
MEDIA 1



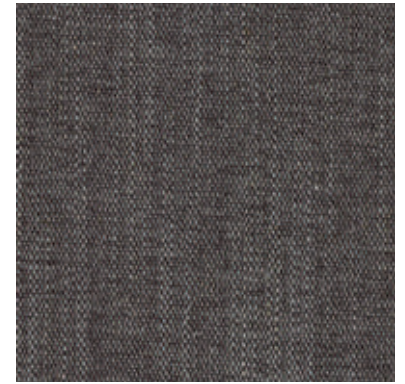
MEDIA 2



MEDIA 3



MEDIA 15



MEDIA 16



MEDIA 12

### TECHNICAL INFORMATION / INFORMAZIONI TECNICHE

Composition / composizione	70% PL -30% LI
Martindale / martindale	>50.000 cycles/cicli
Pilling / Pilling	4-5

### MAINTENANCE / MANUTENZIONE



CAT. M

## Mistral



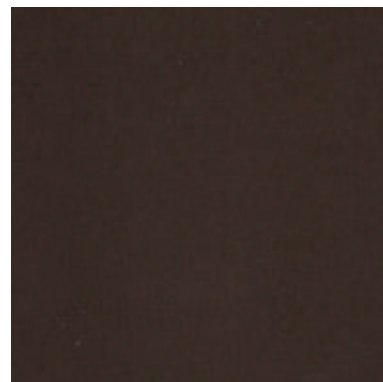
MISTRAL 4



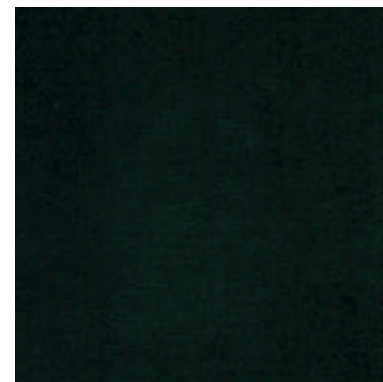
MISTRAL 5



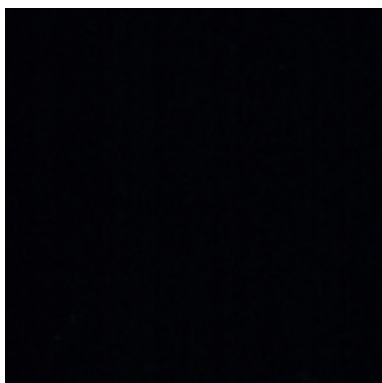
MISTRAL 23



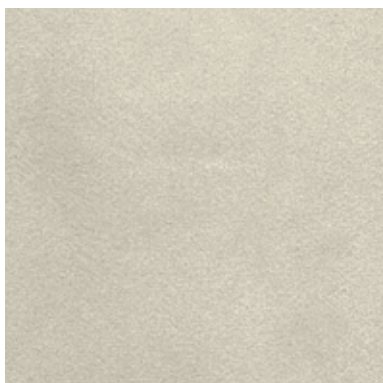
MISTRAL 10



MISTRAL 12



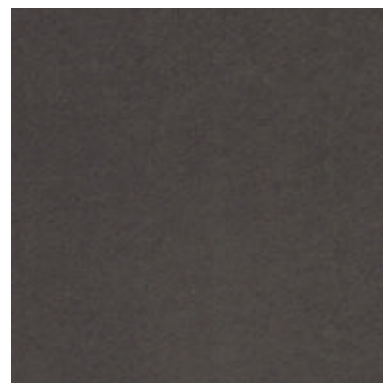
MISTRAL 35



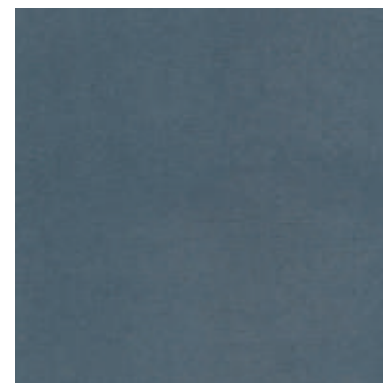
MISTRAL 2



MISTRAL 9



MISTRAL 33



MISTRAL 27

### TECHNICAL INFORMATION / INFORMAZIONI TECNICHE

Composition / composizione	100% PL
Martindale / martindale	>100.000 cycles/cicli
Pilling / Pilling	4-5

### MAINTENANCE / MANUTENZIONE



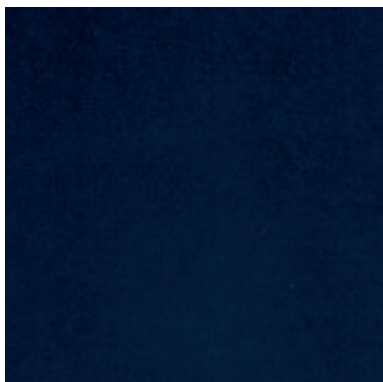


CAT. M

# Mistral



MISTRAL 25



MISTRAL 30

## TECHNICAL INFORMATION / INFORMAZIONI TECNICHE

Composition / composizione	100% PL
Martindale / martindale	>100.000 cycles/cicli
Pilling / Pilling	4-5

## MAINTENANCE / MANUTENZIONE

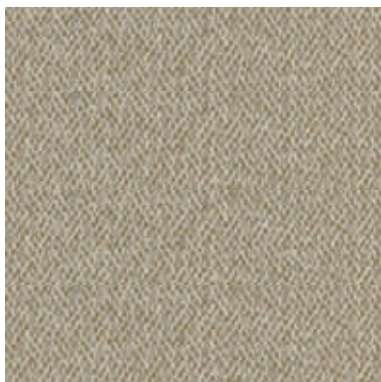


CAT. M

## Moon



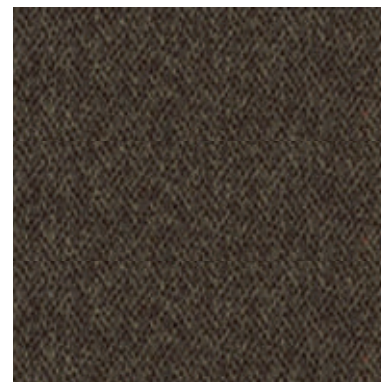
MOON 01



MOON 03



MOON 04



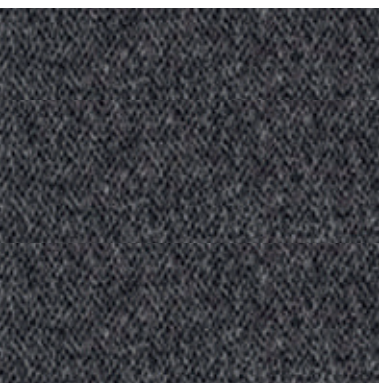
MOON 05



MOON 09



MOON 21



MOON 22



MOON 13



MOON 19



MOON 20

### TECHNICAL INFORMATION / INFORMAZIONI TECNICHE

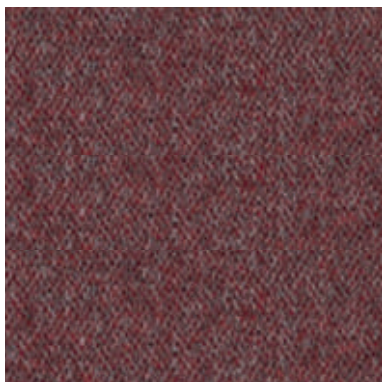
Composition / composizione	100% PL FR
Martindale / martindale	70.000 cycles/cicli
Pilling / Pilling	3-4

### MAINTENANCE / MANUTENZIONE



CAT. M

***Moon***



MOON 06

**TECHNICAL INFORMATION / INFORMAZIONI TECNICHE**

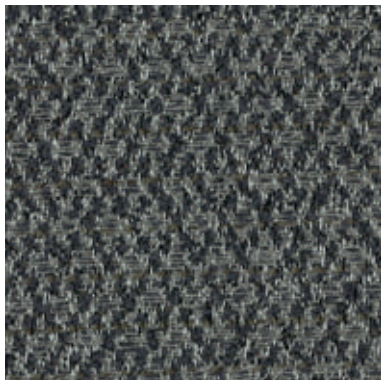
Composition / composizione	100% PL FR
Martindale / martindale	70.000 cycles/cicli
Pilling / Pilling	3-4

**MAINTENANCE / MANUTENZIONE**





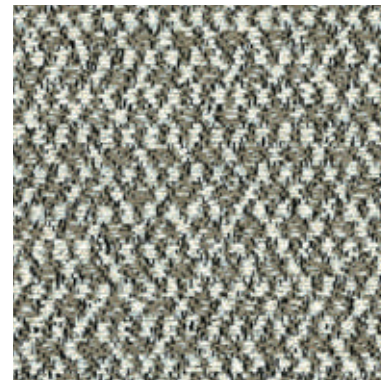
PERRY 303



PERRY 305



PERRY 301



PERRY 309

**TECHNICAL INFORMATION / INFORMAZIONI TECNICHE**

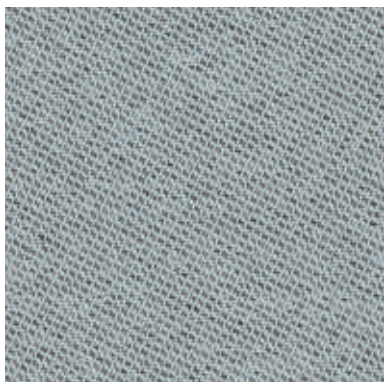
Composition / composizione	49% CO - 33% PL - 12% PC - 6% AF
Martindale / martindale	35.000 cycles/cicli
Pilling / Pilling	3-4

**MAINTENANCE / MANUTENZIONE**



CAT. P

# Phoenix



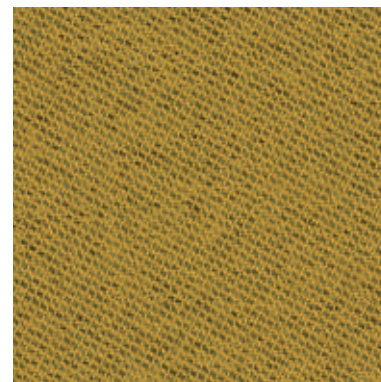
PHOENIX 114



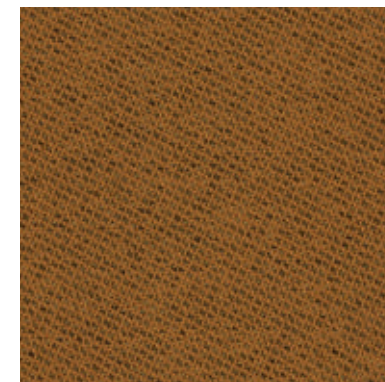
PHOENIX 83



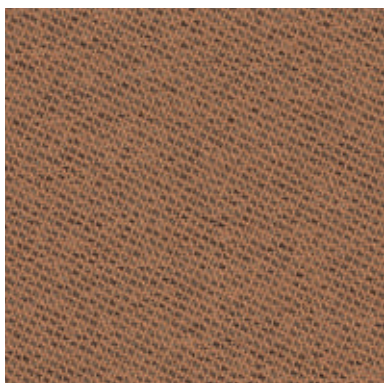
PHOENIX 175



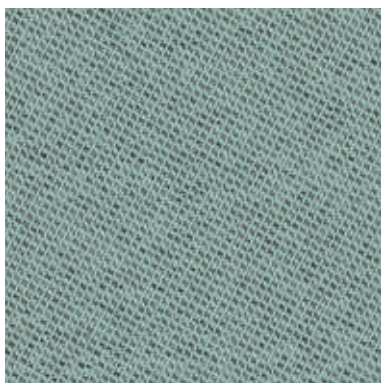
PHOENIX 86



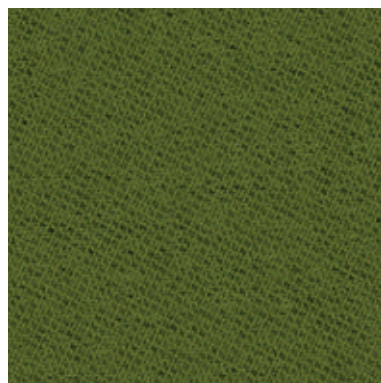
PHOENIX 173



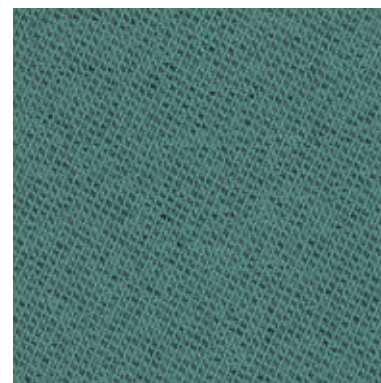
PHOENIX 92



PHOENIX 191



PHOENIX 197



PHOENIX 189

## TECHNICAL INFORMATION / INFORMAZIONI TECNICHE

Composition / composizione	75% PL Recycled - 25% PL
Martindale / martindale	60.000 cycles/cicli
Pilling / Pilling	4-5

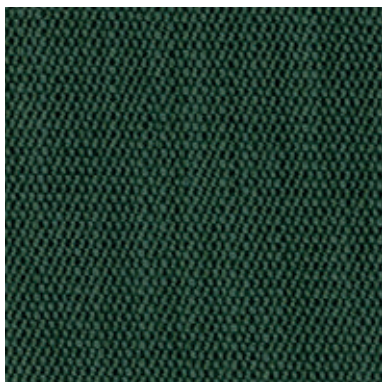
## MAINTENANCE / MANUTENZIONE



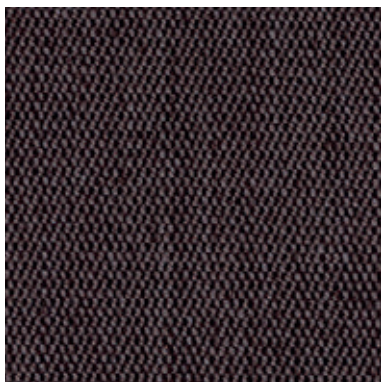


CAT. P

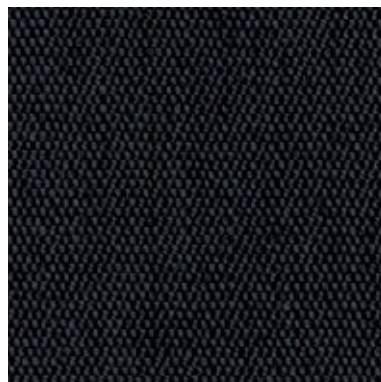
## Piper



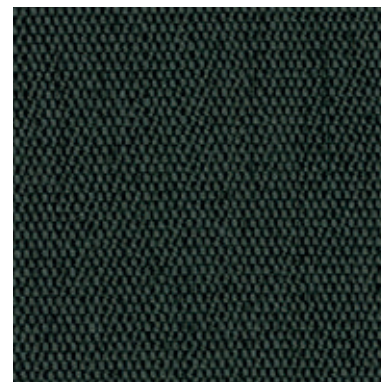
PIPER 500



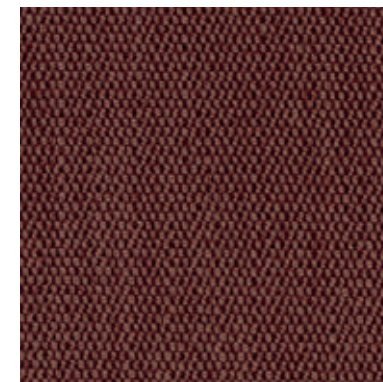
PIPER 703



PIPER 806



PIPER 513



PIPER 206



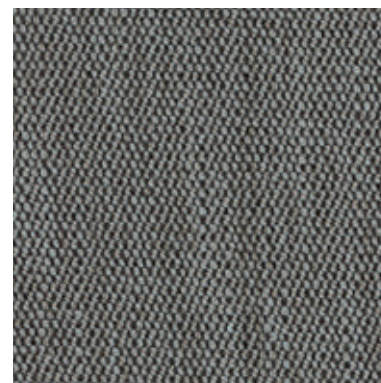
PIPER 805



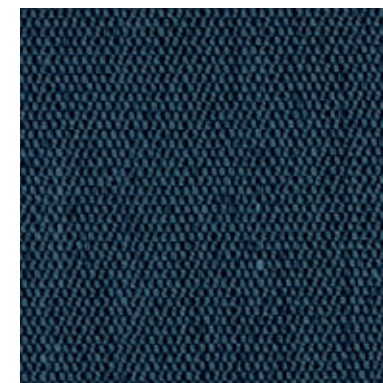
PIPER 510



PIPER 706



PIPER 802



PIPER 606

### TECHNICAL INFORMATION / INFORMAZIONI TECNICHE

Composition / composizione	90% PL - 10% VI
Martindale / martindale	50.000 cycles/cicli
Pilling / Pilling	≥4

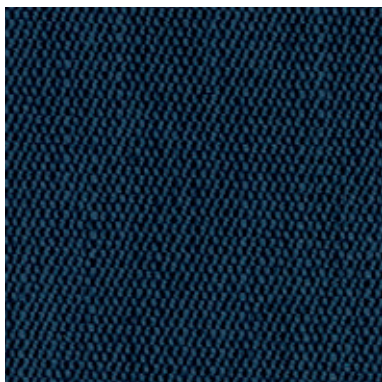
### MAINTENANCE / MANUTENZIONE



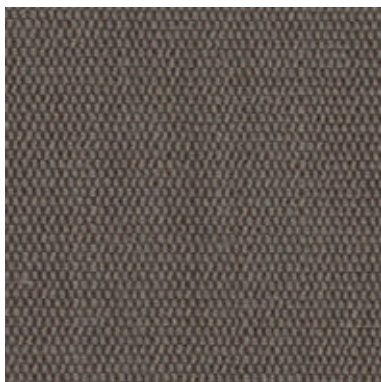


CAT. P

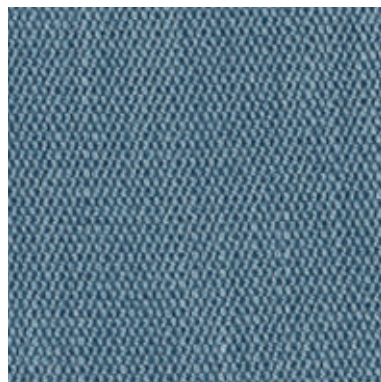
# Piper



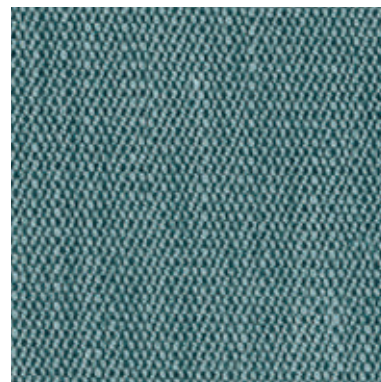
PIPER 605



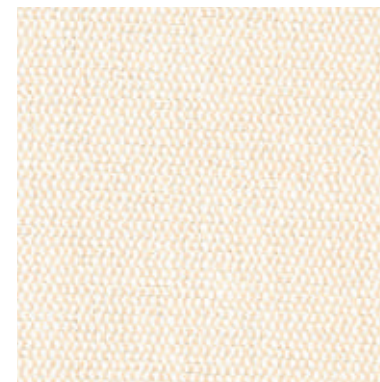
PIPER 101



PIPER 608



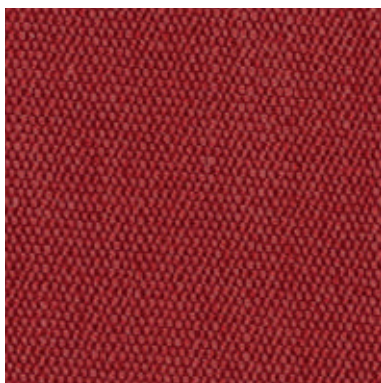
PIPER 602



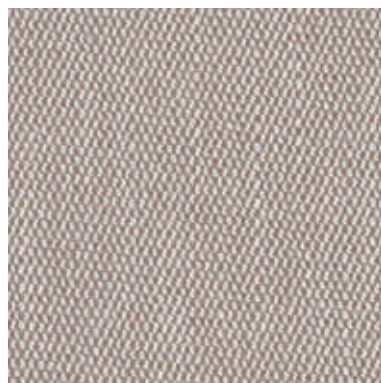
PIPER 900



PIPER 903



PIPER 203



PIPER 901



PIPER 904



PIPER 208

## TECHNICAL INFORMATION / INFORMAZIONI TECNICHE

Composition / composizione	90% PL - 10% VI
Martindale / martindale	50.000 cycles/cicli
Pilling / Pilling	≥4

## MAINTENANCE / MANUTENZIONE





CAT. P

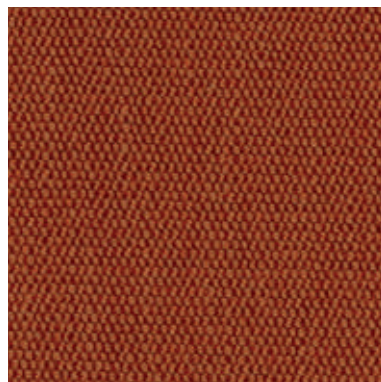
## Piper



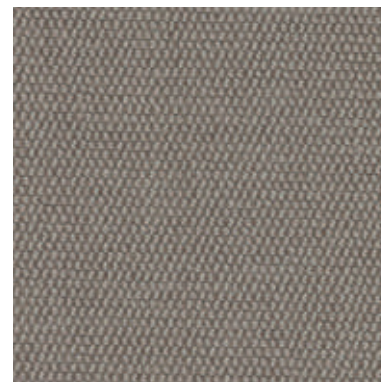
PIPER 902



PIPER 102



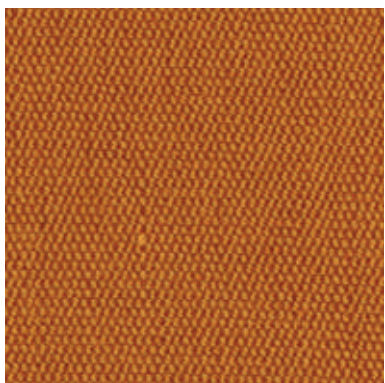
PIPER 301



PIPER 100



PIPER 408



PIPER 404

### TECHNICAL INFORMATION / INFORMAZIONI TECNICHE

Composition / composizione	90% PL - 10% VI
Martindale / martindale	50.000 cycles/cicli
Pilling / Pilling	≥4

### MAINTENANCE / MANUTENZIONE







POTTER 503



POTTER 539



POTTER 524



POTTER 540



POTTER 522



POTTER 501



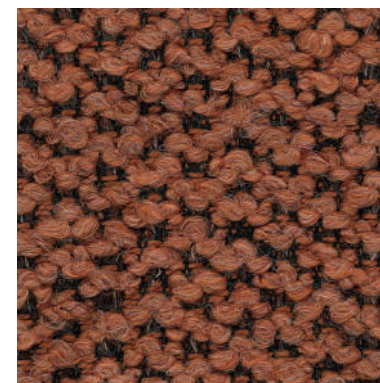
POTTER 510



POTTER 509



POTTER 512



POTTER 529

**TECHNICAL INFORMATION / INFORMAZIONI TECNICHE**

Composition / composizione	34% PC - 24% CO - 14% WO - 12% VI - 12% PL - 4% LI
Martindale / martindale	30.000 cycles/cicli
Pilling / Pilling	4

**MAINTENANCE / MANUTENZIONE**



CAT. P

## Potter



POTTER 530



POTTER 543

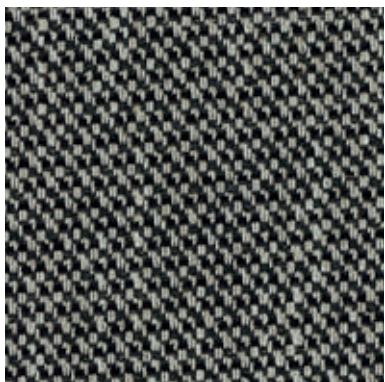
### TECHNICAL INFORMATION / INFORMAZIONI TECNICHE

Composition / composizione	34% PC - 24% CO - 14% WO - 12% VI - 12% PL - 4% LI
Martindale / martindale	30.000 cycles/cicli
Pilling / Pilling	4

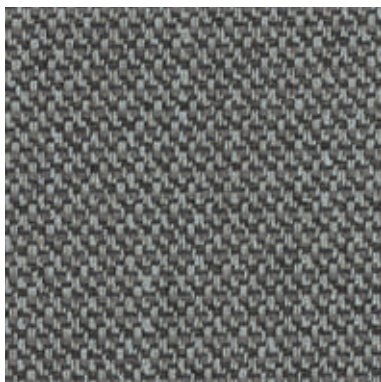
### MAINTENANCE / MANUTENZIONE



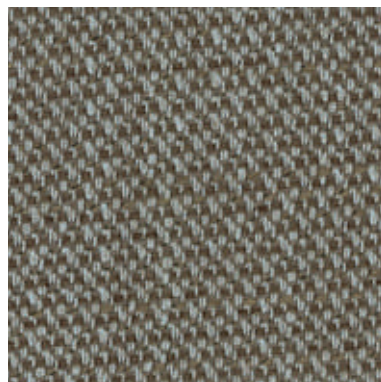




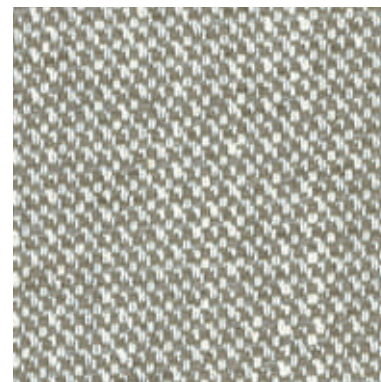
PRESTON 1



PRESTON 3



PRESTON 13



PRESTON 6

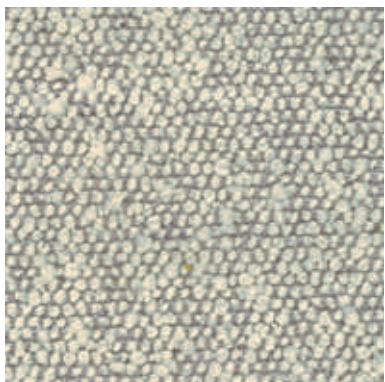
**TECHNICAL INFORMATION / INFORMAZIONI TECNICHE**

Composition / composizione	30% CO - 20% PL - 20% PC - 15% VI - 10% LI - 5% AF
Martindale / martindale	25.000 cycles/cicli
Pilling / Pilling	4

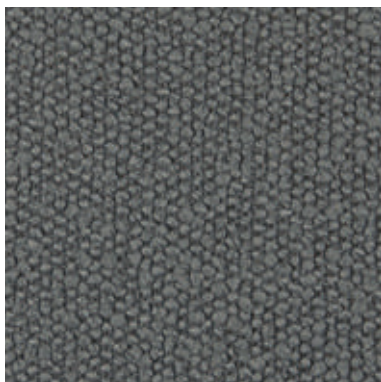
**MAINTENANCE / MANUTENZIONE**

CAT. P

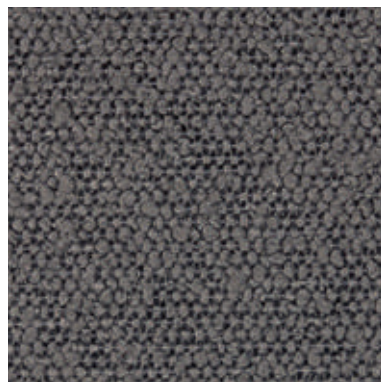
## Princess



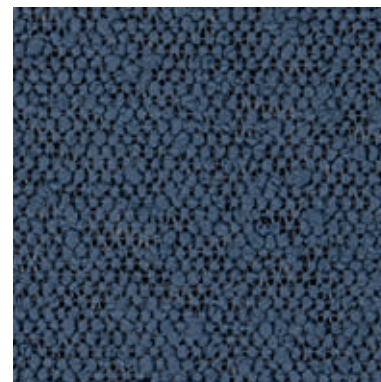
PRINCESS 901



PRINCESS 802



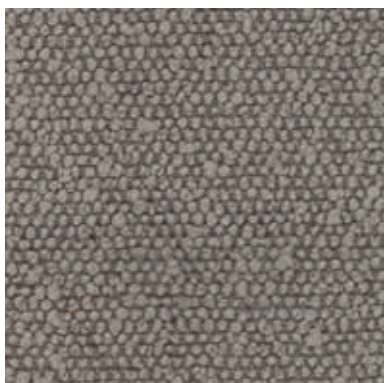
PRINCESS 101



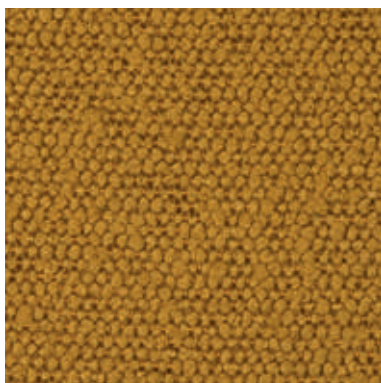
PRINCESS 604



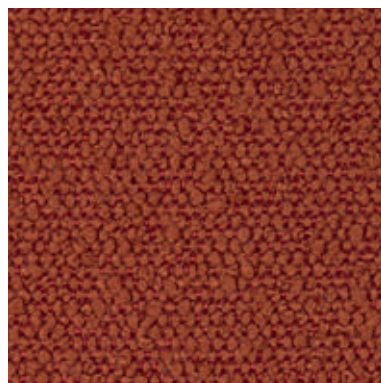
PRINCESS 600



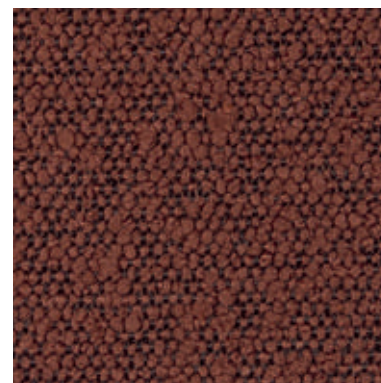
PRINCESS 803



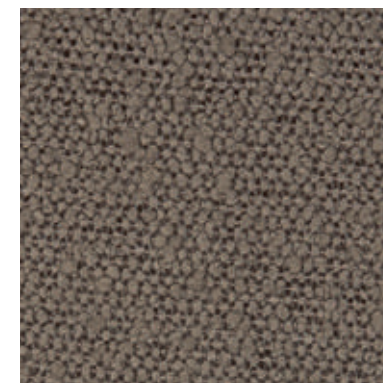
PRINCESS 400



PRINCESS 304



PRINCESS 300



PRINCESS 903

### TECHNICAL INFORMATION / INFORMAZIONI TECNICHE

Composition / composizione	100% PL FR
Martindale / martindale	80.000 cycles/cicli
Pilling / Pilling	5

### MAINTENANCE / MANUTENZIONE

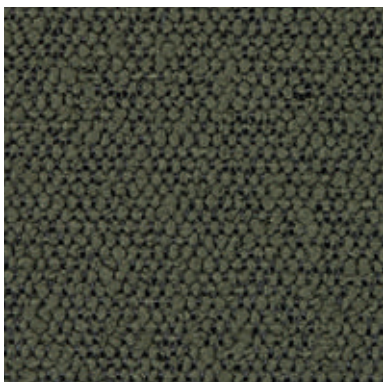




CAT. P

**Princess**

---



PRINCESS 502

---

**TECHNICAL INFORMATION / INFORMAZIONI TECNICHE**

Composition / composizione	100% PL FR
Martindale / martindale	80.000 cycles/cicli
Pilling / Pilling	5

**MAINTENANCE / MANUTENZIONE**

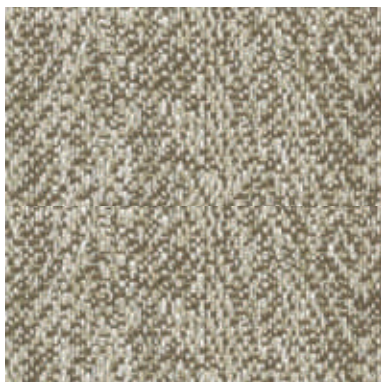


CAT. T

# Taylor



TAYLOR 01



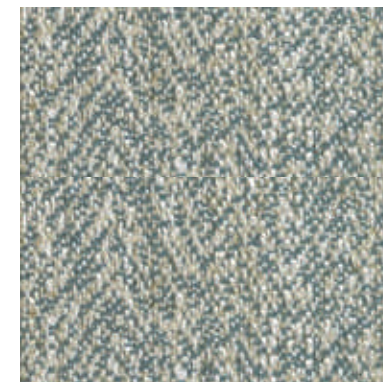
TAYLOR 06



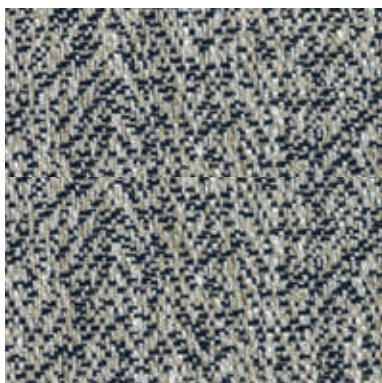
TAYLOR 26



TAYLOR 22



TAYLOR 21



TAYLOR 19



TAYLOR 08

## TECHNICAL INFORMATION / INFORMAZIONI TECNICHE

Composition / composizione	100% PL FR
Martindale / martindale	80.000 cycles/cicli
Pilling / Pilling	5

## MAINTENANCE / MANUTENZIONE



Ditre Italia Products

—

**Pelle**  
***Leathers***

UK - EIRE 2022

**DITRE**  
**italia**



LISBONA 202



LISBONA 203



LISBONA 204



LISBONA 209



LISBONA 210



LISBONA 213



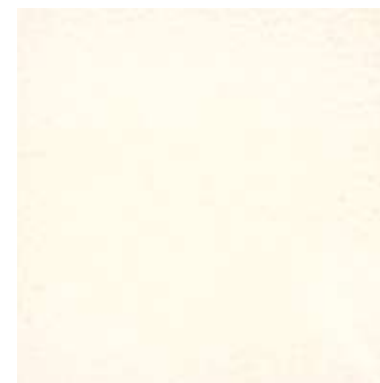
LISBONA 216



LISBONA 218



LISBONA 220



LISBONA 225

**TECHNICAL INFORMATION / INFORMAZIONI TECNICHE**

Type / tipologia	full grain / fiore corretto
Origin / origine	cowhide / pelli bovine
Provenance / provenienza	european / europea
Tanning / concia	chrome salt / sali di cromo
Dye / tintura	aniline dyed / all'anilina
Thickness / spessore	0,9/1 mm

**PHYSICAL TESTS / TEST FISICI**

colour light fastness : > 7	solidità del colore alla luce: > 7
colour fastness to the dry-rubbing 500 cycles: >4/5	solidità del colore allo strofinio a secco 500 cicli: >4/5
colour fastness to the wet-rubbing 250 cycles: >4/5	solidità del colore allo strofinio a umido 250 cicli: >4/5
fastness to the bending >50.000 cycles	solidità alla flessione >50.000 cicli



LISBONA 229



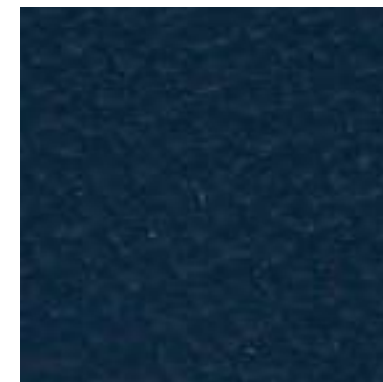
LISBONA 232



LISBONA 233



LISBONA 238



LISBONA 239



LISBONA 240



LISBONA 241



LISBONA 242



LISBONA 249



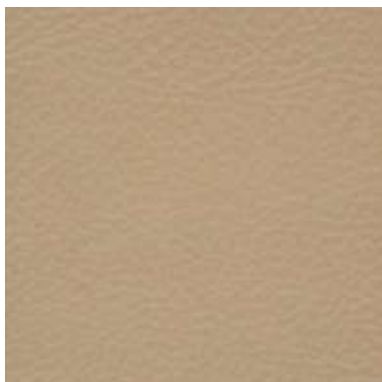
LISBONA 259

**TECHNICAL INFORMATION / INFORMAZIONI TECNICHE**

Type / tipologia	full grain / fiore corretto
Origin / origine	cowhide / pelli bovine
Provenance / provenienza	european / europea
Tanning / concia	chrome salt / sali di cromo
Dye / tintura	aniline dyed / all'anilina
Thickness / spessore	0,9/1 mm

**PHYSICAL TESTS / TEST FISICI**

colour light fastness : > 7	solidità del colore alla luce: > 7
colour fastness to the dry-rubbing 500 cycles: >4/5	solidità del colore allo strofinio a secco 500 cicli: >4/5
colour fastness to the wet-rubbing 250 cycles: >4/5	solidità del colore allo strofinio a umido 250 cicli: >4/5
fastness to the bending >50.000 cycles	solidità alla flessione >50.000 cicli



LISBONA 266



LISBONA 267



LISBONA 268



LISBONA 278

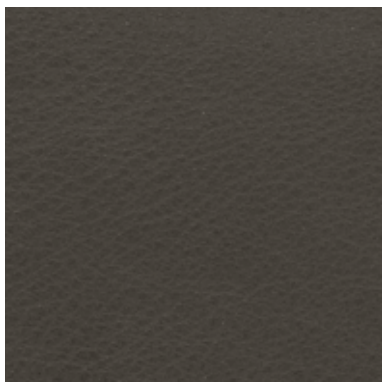
**TECHNICAL INFORMATION / INFORMAZIONI TECNICHE**

Type / tipologia	full grain / fiore corretto
Origin / origine	cowhide / pelli bovine
Provenance / provenienza	european / europea
Tanning / concia	chrome salt / sali di cromo
Dye / tintura	aniline dyed / all'anilina
Thickness / spessore	0,9/1 mm

**PHYSICAL TESTS / TEST FISICI**

colour light fastness : > 7	solidità del colore alla luce: > 7
colour fastness to the dry-rubbing 500 cycles: >4/5	solidità del colore allo strofinio a secco 500 cicli: >4/5
colour fastness to the wet-rubbing 250 cycles: >4/5	solidità del colore allo strofinio a umido 250 cicli: >4/5
fastness to the bending >50.000 cycles	solidità alla flessione >50.000 cicli





PISA 001



PISA 002



PISA 003



PISA 004

**TECHNICAL INFORMATION / INFORMAZIONI TECNICHE**

Type / tipologia	full grain / fiore corretto
Origin / origine	cowhide / pelli bovine
Provenance / provenienza	european / europea
Tanning / concia	chrome salt / sali di cromo
Dye / tintura	in barrels / in botte con anilina
Thinckness / spessore	1,0/1,2 mm

**PHYSICAL TESTS / TEST FISICI**

colour light fastness : 3	solidità del colore alla luce: 3
colour fastness to the dry-rubbing: 50 cycles	solidità del colore allo strofinio a secco: 50 cicli
colour fastness to the wet-rubbing: 20 cycles	solidità del colore allo strofinio a umido: 20 cicli



POLAR 204



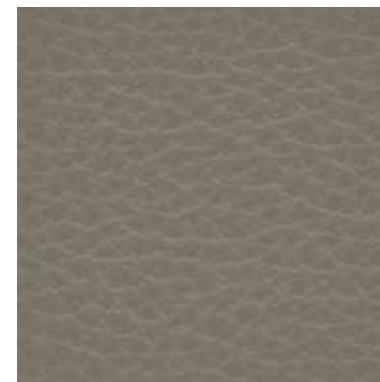
POLAR 207



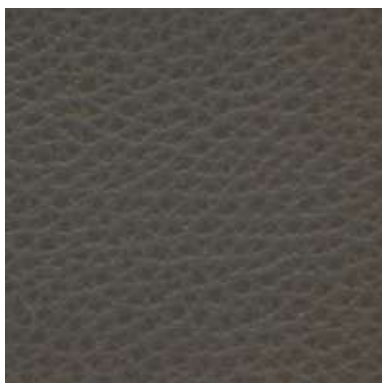
POLAR 208



POLAR 209



POLAR 210



POLAR 211



POLAR 212



POLAR 214



POLAR 216



POLAR 217

**TECHNICAL INFORMATION / INFORMAZIONI TECNICHE**

Type / tipologia	full grain / fiore corretto
Origin / origine	cowhide / pelli bovine
Provenance / provenienza	worldwide / mondiale
Tanning / concia	chrome salt / sali di cromo
Dye / tintura	in barrels / in botte passante
Thickness / spessore	1,2/1,4 mm

**PHYSICAL TESTS / TEST FISICI**

colour light fastness : 5	solidità del colore alla luce: 5
colour fastness to the dry-rubbing 500 cycles: >4	solidità del colore allo strofinio a secco 500 cicli: >4
colour fastness to the wet-rubbing 250 cycles: >4	solidità del colore allo strofinio a umido 250 cicli: >4
fastness to the bending 50.000: cycles no damage	solidità alla flessione 50.000 cicli: nessun danno



POLAR 218



POLAR 223



POLAR 246



POLAR 251



POLAR 257



POLAR 264



POLAR 266



POLAR 270



POLAR 271



POLAR 275

**TECHNICAL INFORMATION / INFORMAZIONI TECNICHE**

Type / tipologia	full grain / fiore corretto
Origin / origine	cowhide / pelli bovine
Provenance / provenienza	worldwide / mondiale
Tanning / concia	chrome salt / sali di cromo
Dye / tintura	in barrels / in botte passante
Thickness / spessore	1,2/1,4 mm

**PHYSICAL TESTS / TEST FISICI**

colour light fastness : 5	solidità del colore alla luce: 5
colour fastness to the dry-rubbing 500 cycles: >4	solidità del colore allo strofinio a secco 500 cicli: >4
colour fastness to the wet-rubbing 250 cycles: >4	solidità del colore allo strofinio a umido 250 cicli: >4
fastness to the bending 50.000: cycles no damage	solidità alla flessione 50.000 cicli: nessun danno



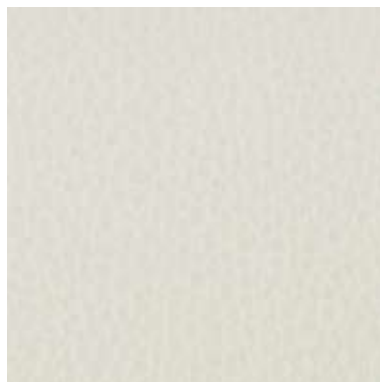
POLAR 277



POLAR 281



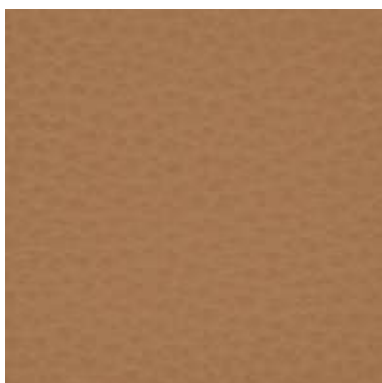
POLAR 284



POLAR 286



POLAR 288



POLAR 295



POLAR 298



POLAR 304



POLAR 398



POLAR 399

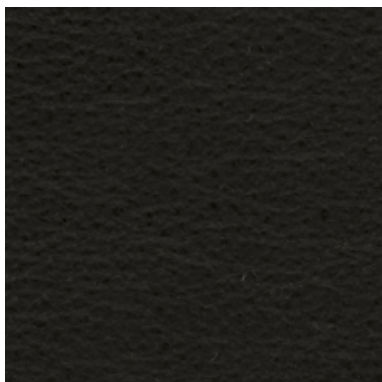
**TECHNICAL INFORMATION / INFORMAZIONI TECNICHE**

Type / tipologia	full grain / fiore corretto
Origin / origine	cowhide / pelli bovine
Provenance / provenienza	worldwide / mondiale
Tanning / concia	chrome salt / sali di cromo
Dye / tintura	in barrels / in botte passante
Thickness / spessore	1,2/1,4 mm

**PHYSICAL TESTS / TEST FISICI**

colour light fastness : 5	solidità del colore alla luce: 5
colour fastness to the dry-rubbing 500 cycles: >4	solidità del colore allo strofinio a secco 500 cicli: >4
colour fastness to the wet-rubbing 250 cycles: >4	solidità del colore allo strofinio a umido 250 cicli: >4
fastness to the bending 50.000: cycles no damage	solidità alla flessione 50.000 cicli: nessun danno

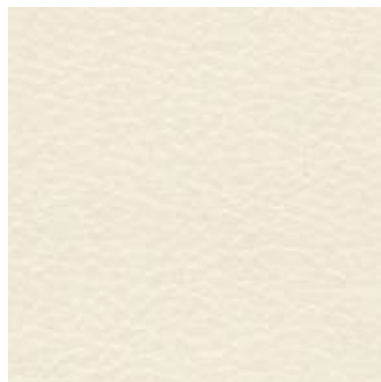




SIDNEY 80



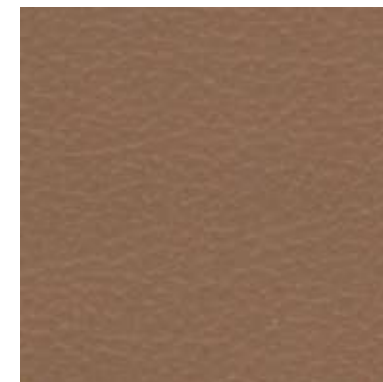
SIDNEY 201



SIDNEY 415



SIDNEY 696



SIDNEY 700



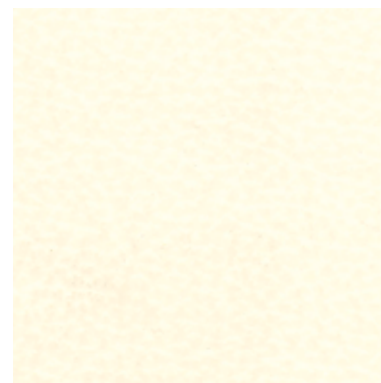
SIDNEY 701



SIDNEY 702



SIDNEY 817



SIDNEY 2000

**TECHNICAL INFORMATION / INFORMAZIONI TECNICHE**

Type / tipologia	half grain / mezzo fiore
Origin / origine	cowhide / pelli bovine
Provenance / provenienza	worldwide / mondiale
Tanning / concia	chrome salt / sali di cromo
Dye / tintura	in barrels / in botte passante
Thickness / spessore	0,9/1,1 mm

**PHYSICAL TESTS / TEST FISICI**

colour light fastness : 4/5 out of 5	solidità del colore alla luce: 4/5 su 5
colour fastness to the dry-rubbing: 500 cycles	solidità del colore allo strofinio a secco: 500 cicli
colour fastness to the wet-rubbing: 250 cycles	solidità del colore allo strofinio a umido: 250 cicli
fastness to the bending: 50.000	solidità alla flessione: 50.000 cicli



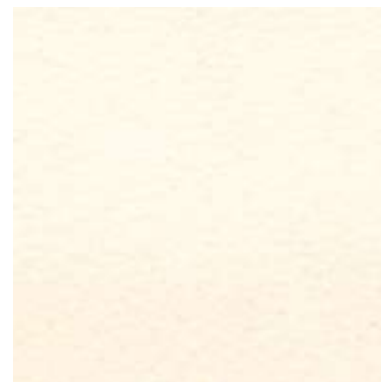
TOKIO 401



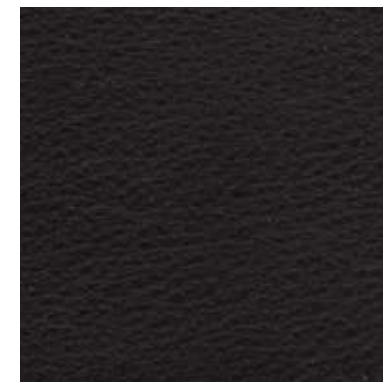
TOKIO 404



TOKIO 406



TOKIO 409



TOKIO 451



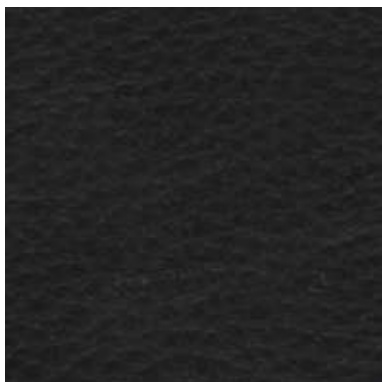
TOKIO 500

**TECHNICAL INFORMATION / INFORMAZIONI TECNICHE**

Type / tipologia	full grain / fiore corretto
Origin / origine	cowhide / pelli bovine
Provenance / provenienza	worldwide / mondiale
Tanning / concia	chrome salt / sali di cromo
Dye / tintura	in barrels / in botte passante
Thickness / spessore	1,2/1,3 mm

**PHYSICAL TESTS / TEST FISICI**

colour light fastness : 5	solidità del colore alla luce: 5
colour fastness to the dry-rubbing: 500 cycles	solidità del colore allo strofinio a secco: 500 cicli
colour fastness to the wet-rubbing: 250 cycles	solidità del colore allo strofinio a umido: 250 cicli



TORONTO 101



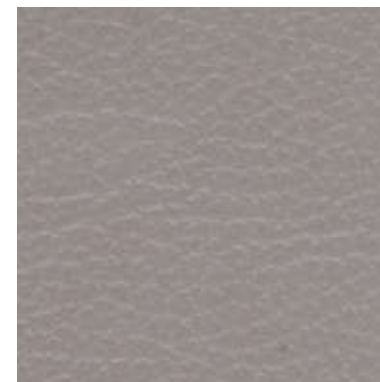
TORONTO 102



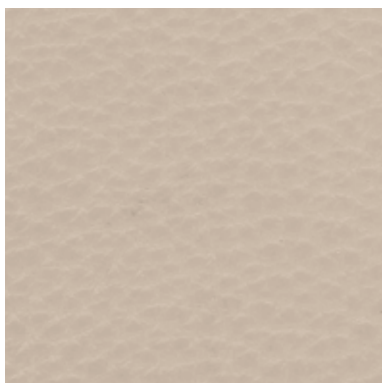
TORONTO 103



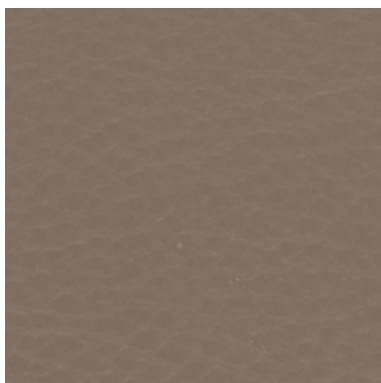
TORONTO 105



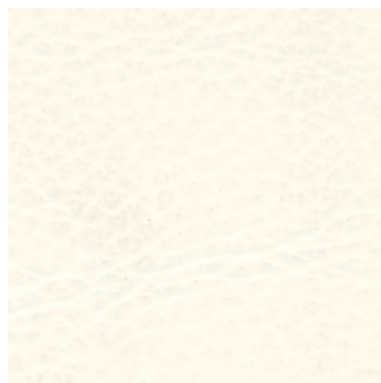
TORONTO 108



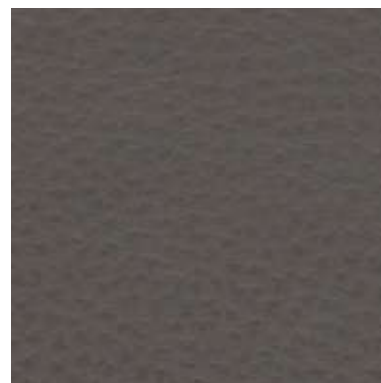
TORONTO 109



TORONTO 112



TORONTO 113



TORONTO 200

**TECHNICAL INFORMATION / INFORMAZIONI TECNICHE**

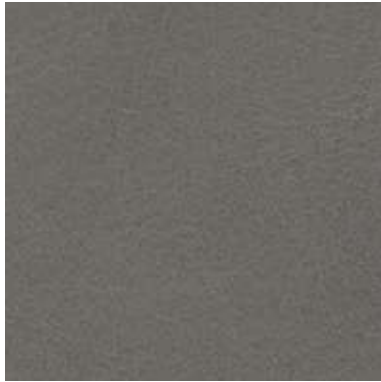
Type / tipologia	full grain / pieno fiore
Origin / origine	cowhide / pelli bovine
Provenance / provenienza	worldwide / mondiale
Tanning / concia	chrome salt / sali di cromo
Dye / tintura	in barrels / in botte passante
Thickness / spessore	1,3/1,5 mm

**PHYSICAL TESTS / TEST FISICI**

colour light fastness : 4/5 out of 5	solidità del colore alla luce: 4/5 su 5
colour fastness to the dry-rubbing 500 cycles	solidità del colore allo strofinio a secco 500 cicli
colour fastness to the wet-rubbing 250 cycles	solidità del colore allo strofinio a umido 250 cicli
fastness to the bending 50.000 cycles	solidità alla flessione 50.000 cicli



VENICE 001



VENICE 002



VENICE 003



VENICE 004

**TECHNICAL INFORMATION / INFORMAZIONI TECNICHE**

Type / tipologia	full grain / pieno fiore
Origin / origine	cowhide /pelli bovine
Provenance / provenienza	european / europa
Tanning / concia	chrome salt / sali di cromo
Dye / tintura	aniline through / all'anilina passante in botte sotto vuoto
Thinckness / spessore	0,9/1,1 mm

**PHYSICAL TESTS / TEST FISICI**

colour light fastness : 4/5	solidità del colore alla luce: 4/5
colour fastness to the dry-rubbing: 500 cycles	solidità del colore allo strofinio a secco: 500 cicli
colour fastness to the wet-rubbing: 80 cycles	solidità del colore allo strofinio a umido: 80 cicli





VOGUE 401



VOGUE 402



VOGUE 403



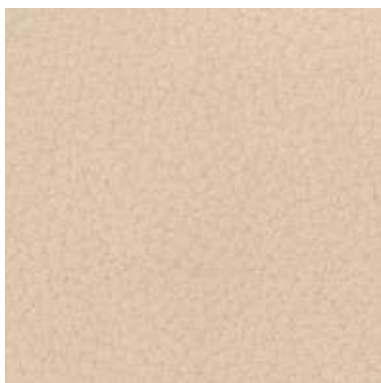
VOGUE 404



VOGUE 407



VOGUE 409



VOGUE 410



VOGUE 412



VOGUE 418



VOGUE 421

**TECHNICAL INFORMATION / INFORMAZIONI TECNICHE**

Type / tipologia	full grain / pieno fiore
Origin / origine	cowhide / pelli bovine
Provenance / provenienza	european / europa
Tanning / concia	chrome salt / sali di cromo
Dye / tintura	aniline drum dyeing / anilina passante in botte sottovuoto
Thickness / spessore	1,3/1,5 mm

**PHYSICAL TESTS / TEST FISICI**

colour light fastness : 4/5 out of 5	solidità del colore alla luce: >2/3 scala blusolidità del colore
colour fastness to the 50 dry-rubbing: 2/3 grey scale	allo strofinio a secco 50 cicli: >3 scala grigi
colour fastness to the 20 wet-rubbing: >2/3 grey scale	solidità del colore allo strofinio a umido 20 cicli:
	>2/3 scala grigi



VOGUE 422



VOGUE 423



VOGUE 424



VOGUE 425



VOGUE 426

#### TECHNICAL INFORMATION / INFORMAZIONI TECNICHE

Type / tipologia	full grain / pieno fiore
Origin / origine	cowhide /pelli bovine
Provenance / provenienza	european / europa
Tanning / concia	chrome salt / sali di cromo
Dye / tintura	aniline drum dyeing / anilina passante in botte sottovuoto
Thinckness / spessore	1,3/1,5 mm

#### PHYSICAL TESTS / TEST FISICI

colour light fastness : 4/5 out of 5	solidità del colore alla luce: >2/3 scala blusolidità del colore
colour fastness to the 50 dry-rubbing: 2/3 grey scale	allo strofinio a secco 50 cicli: >3 scala grigi
colour fastness to the 20 wet-rubbing: >2/3 grey scale	solidità del colore allo strofinio a umido 20 cicli:
	>2/3 scala grigi