

# materials and technical characteristics

- **solid walnut :**

american walnut - quality prime

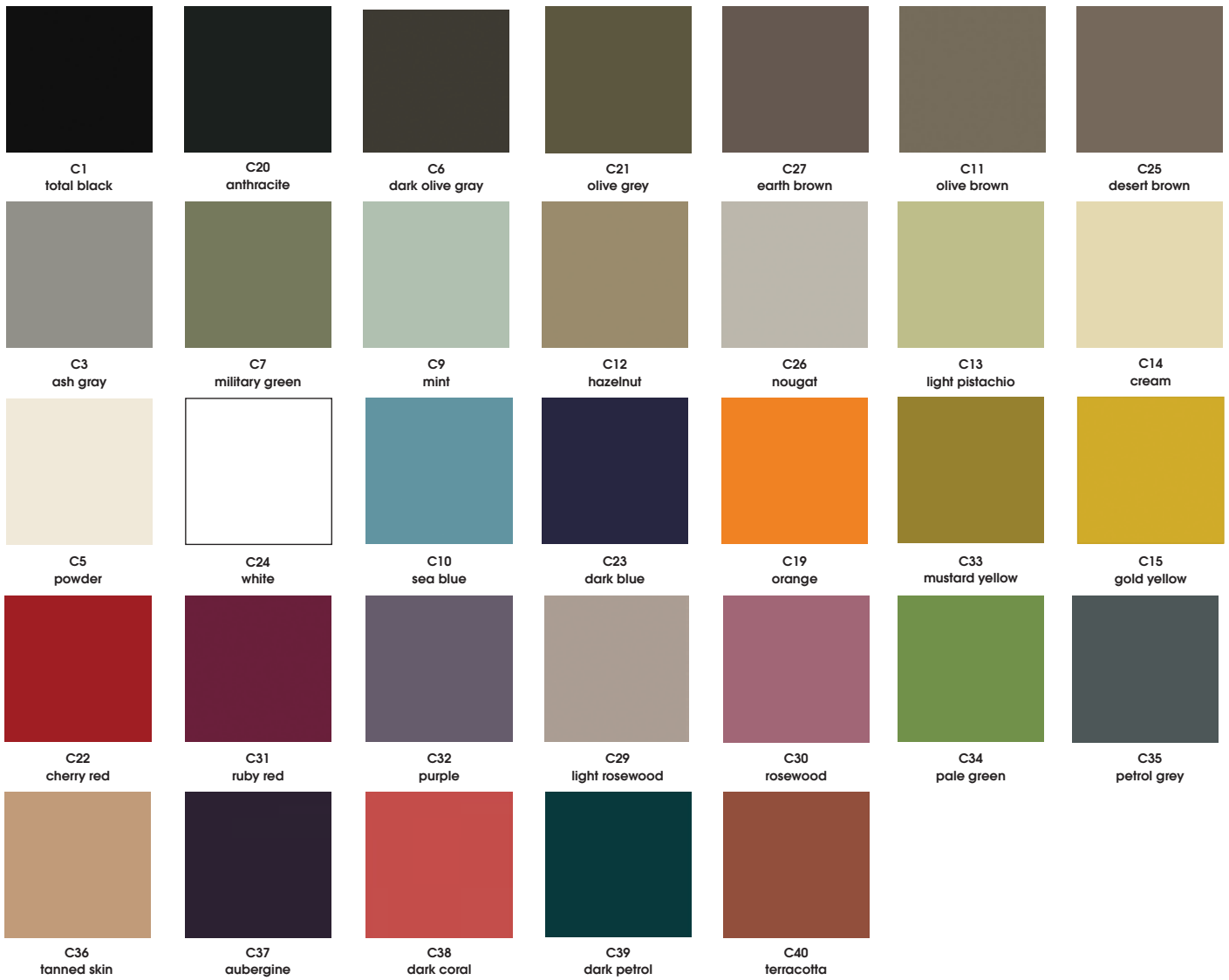
- **solid oak :**

for tables **vintme** & **mobius**: american oak -- quality prime

for tables **alhambra**, **mos-i-ko**, **bo-em**, **acro-bat**, **ka-bera**, **o-rizon**: european oak -- quality prime

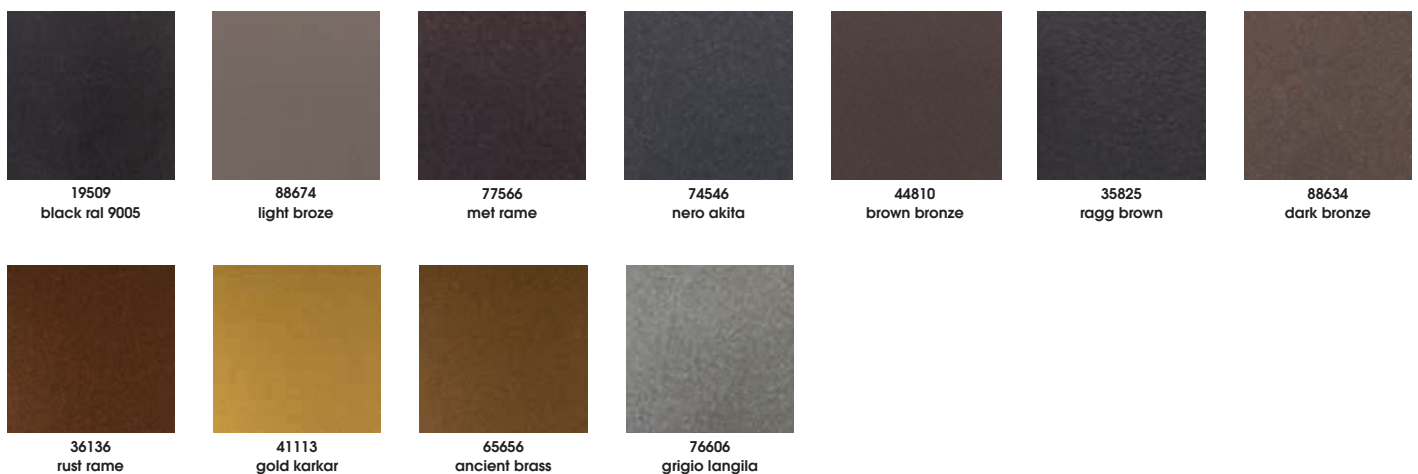
- **ecological material**
- **low thickness 6mm**
- **weight 12kg per square meter**
- **durability in 570kg per centimeter**
- **durability in 1300° C temperature**
- **zero absorbency**
- **resistant to acids**
- **resistant to scratches**
- **completely polished without any care**

# lacquers



# epoxy powder

only for metal parts



# woods



oak 11  
natural oak



oak 12  
light oak



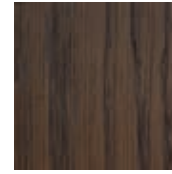
oak 13  
black oak



oak 14  
light chocolate oak



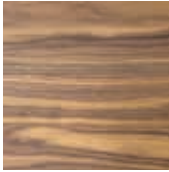
oak 15  
dark olive grey oak



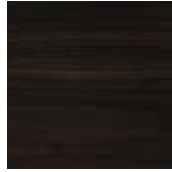
oak 16  
brown oak



american walnut

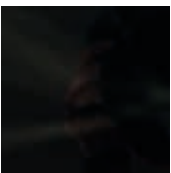


walnut canaletto



veneer  
smoked eucalyptus

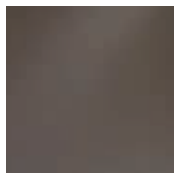
# glasses



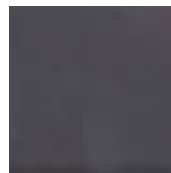
lacobel black



gl1: transparent

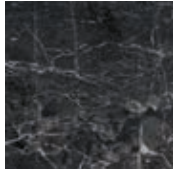


gl2: bronze

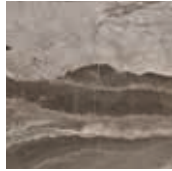


gl5: fume

# marbles



argus vein



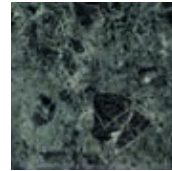
olympus grey



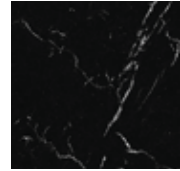
volakas



mycenae

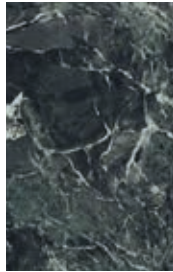


tinos marble

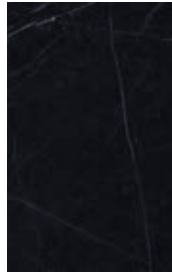


nero marquina

# ceramic maxfine a



aosta green marble



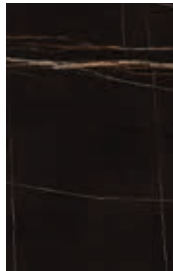
black marquina



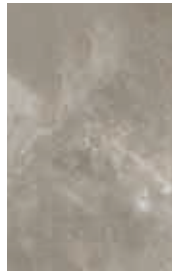
calacatta grey



calacatta white



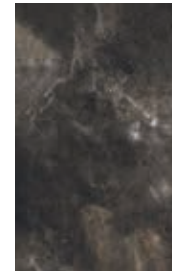
sahara noir



abyss grey

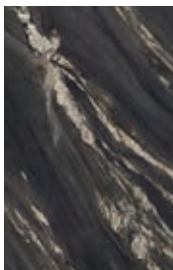


intensive white



mystic black

# ceramic maxfine b



kuroca silky



arabescato



gem pearl



onice avorio



calacatta oro



breccia medicea

colors may vary from reality